

Figure 1
Project Location Map
 Conserv FS-Kansasville
 Kansasville, Racine County, Wisconsin

Source(s):
 Municipalities (WI DOT, 2012)
 Waterbody (WI DNR, May, 2007)
 Counties (WIDOT, 2007)
 Roads (WI DOT, 2014)





Wednesday, May 8, 2024

Project Number: 22-28114

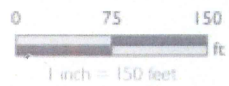


Figure 2
 Aerial Photograph and Parcel Map
 Conserv FS-Kansville
 Kansasville, Racine County, Wisconsin

Source(s):
 Orthophoto (ESRI, 2022)
 Parcels (Racine Co., 2023)





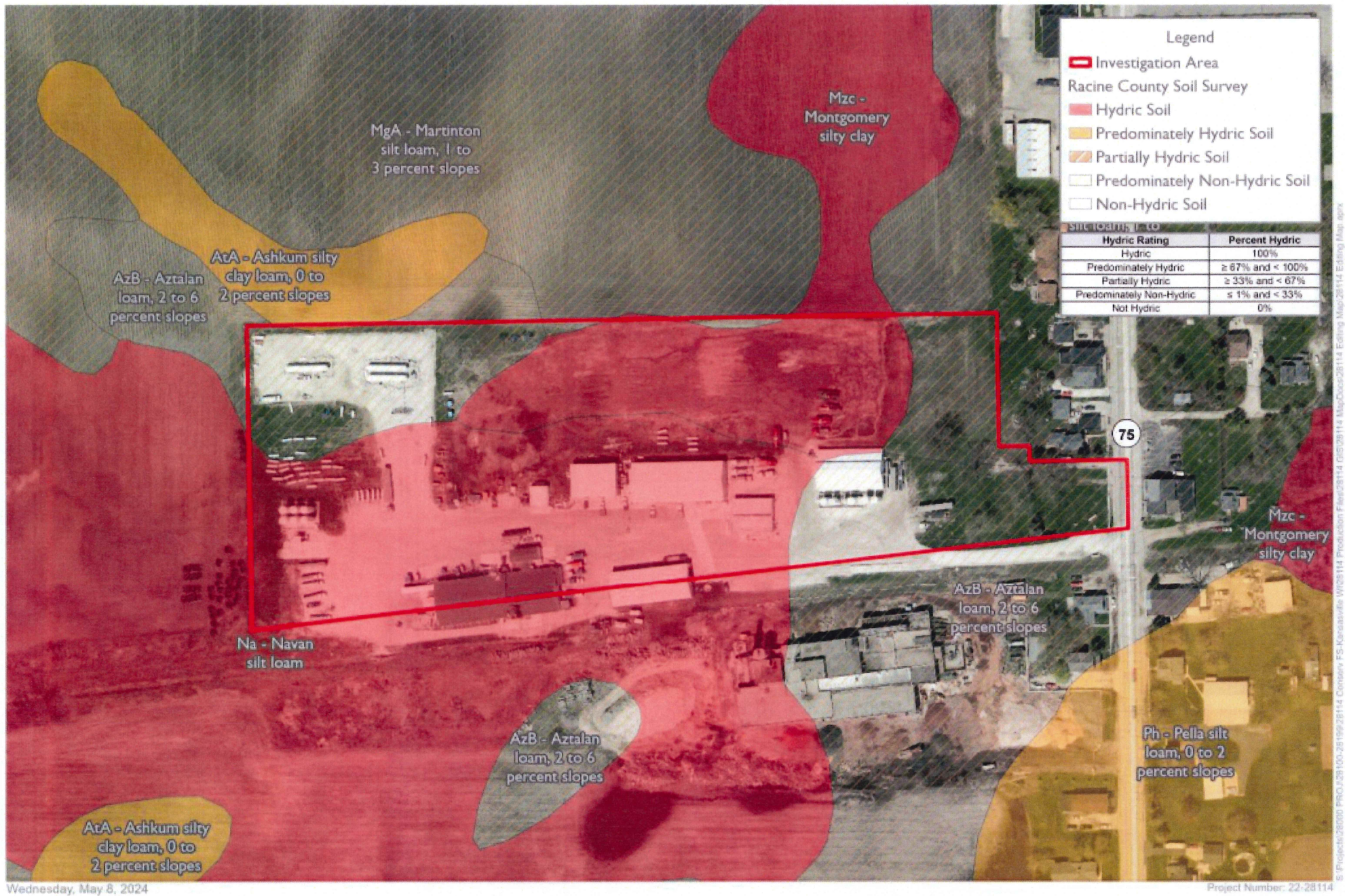
Figure 3
 Wisconsin Wetlands Inventory and
 National Hydrography Dataset Map
 Conserv FS-Kansasville
 Kansasville, Racine County, Wisconsin

0 100 200
 ft
 1 inch = 200 feet



Source(s):
 Orthophoto (ESRI, 2022)
 WVI (WI DNR, 2019)
 NHD (USGS, 2020)





Wednesday, May 8, 2024

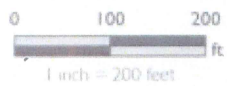
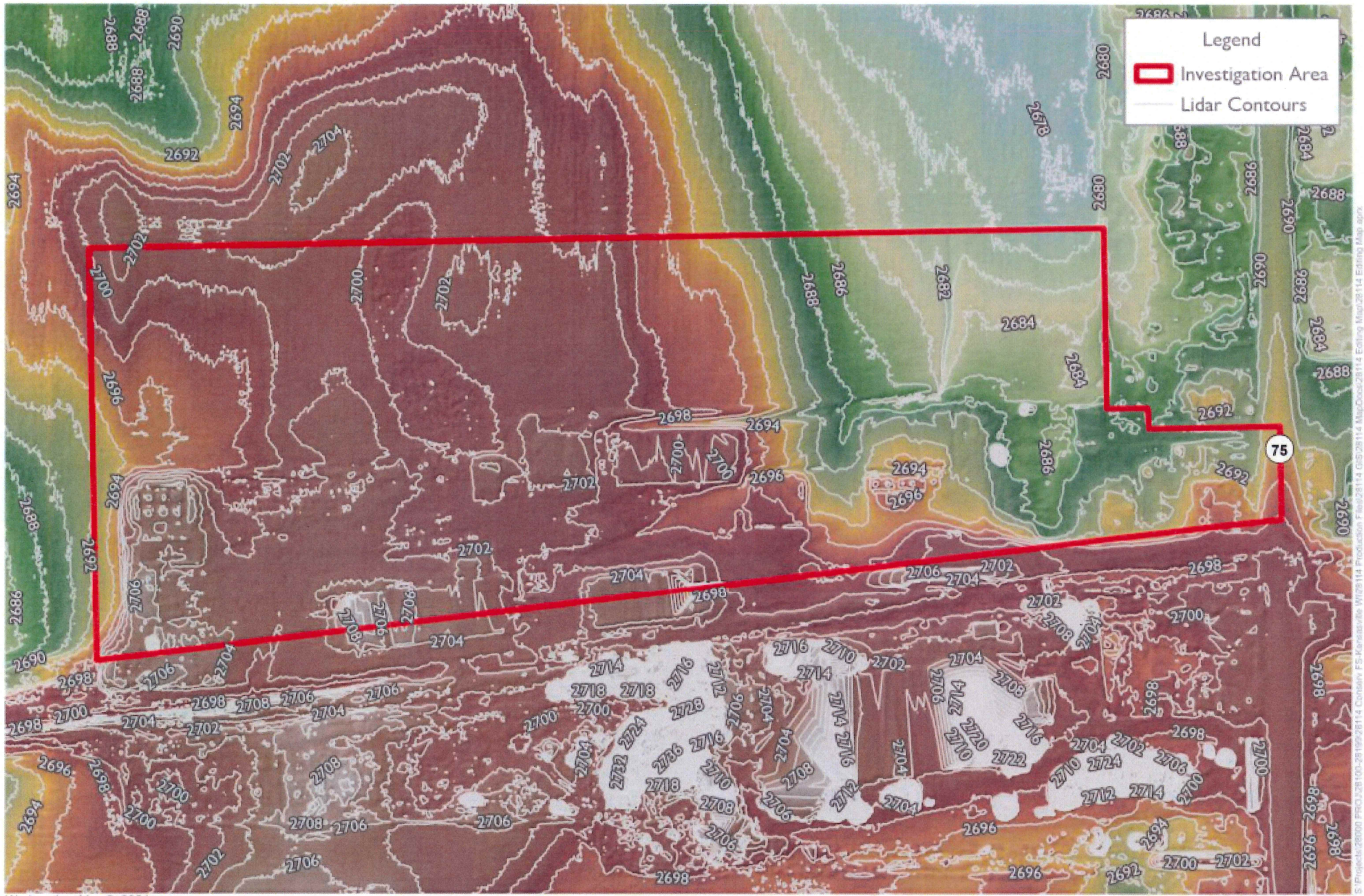


Figure 4
 Racine County Soil Survey Map
 Conserv FS-Kansasville
 Kansasville, Racine County, Wisconsin

Source(s):
 Orthophoto (ESRI, 2022)
 Soil Survey (USDA NRCS, 2023)



S:\Projects\28000 PROJ\28114\25199\28114 Conserv FS-Kansasville\2023114 Production\Fig28114 MapDoc28114.mxd; 2023114; Editing Map.aprx



Wednesday, May 8, 2024

Project Number: 22-28114

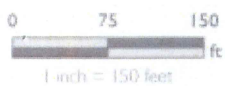


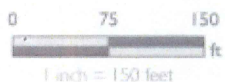
Figure 5
LIDAR Elevations and Hillshade Map
 Conserv FS-Kansville
 Kansasville, Racine County, Wisconsin

Source(s):
 Contours (Racine Co, 2017)
 Hillshade (Racine Co, 2017)





Figure 6
 Wetland Delineation Map
 Conserv FS-Kansville
 Kansasville, Racine County, Wisconsin



Source(s):
 Orthophoto (ESRI, 2022)
 Orthophoto (ESRI, 2023)
 Wetland Delineation (ISG, 2024)
 Contours (Racine Co, 2017)



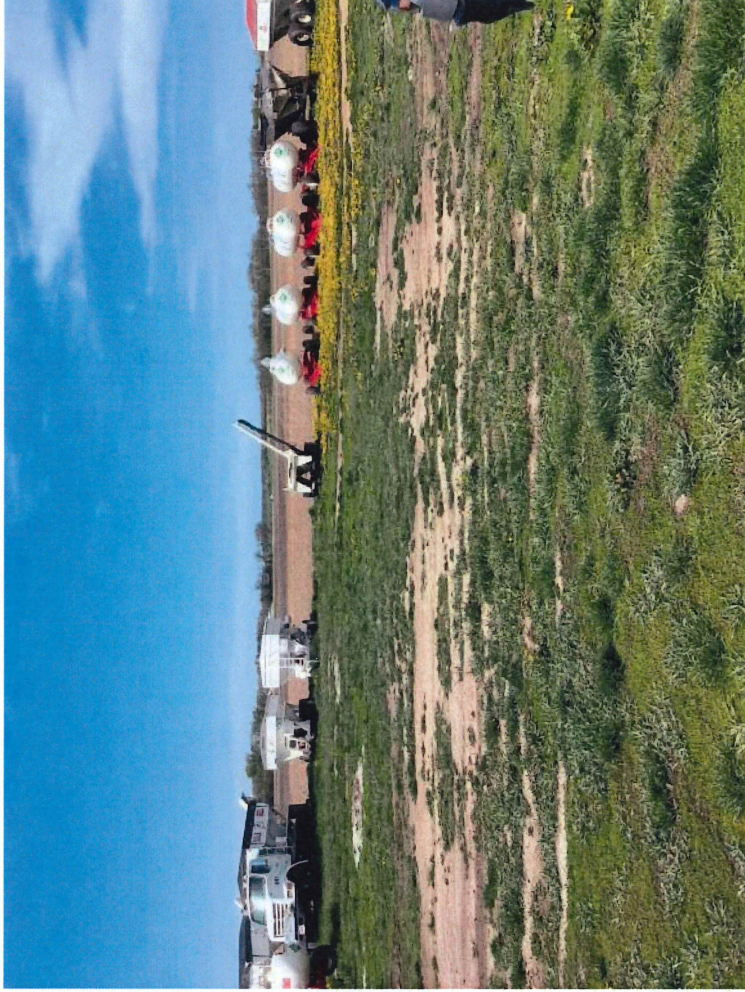


Photo 1 – View across the investigation area, facing north.



Photo 2 – View of across the investigation area, facing south.

Photo Log
April 30, 2024



Photo 3 – View across the investigation area, facing west.