

2
3 RESOLUTION BY THE PUBLIC WORKS, PARKS AND FACILITIES COMMITTEE
4 AUTHORIZING THE CONVEYANCE OF COUNTY-OWNED LAND BY PERMANENT
5 EASEMENT TO WISCONSIN ELECTRIC POWER COMPANY (DBA WE ENERGIES)
6 TO INSTALL ELECTRIC FACILITIES IN PRITCHARD PARK

7
8 To the Honorable members of the Racine County Board of Supervisors:

9
10 BE IT RESOLVED by the Racine County Board of Supervisors that Racine
11 County is authorized to transfer certain county-owned lands to Wisconsin Electric Power
12 Company (We Energies) for utility purposes; and

13
14 BE IT FURTHER RESOLVED by the Racine County Board of Supervisors that
15 Racine County is authorized to grant easements on certain county-owned lands to
16 Wisconsin Electric Power Company for utility purposes; and

17
18 BE IT FURTHER RESOLVED by the Racine County Board of Supervisors that
19 the easements are, as set forth in Exhibit "A", attached hereto; and

20
21 BE IT FURTHER RESOLVED by the Racine County Board of Supervisors that
22 Corporation Counsel is authorized to prepare or review any agreement or other
23 document, with the necessary and appropriate terms and conditions to facilitate this
24 transaction; and

25
26 BE IT FURTHER RESOLVED by the Racine County Board of Supervisors that
27 additional terms and conditions may be applicable as the Corporation Counsel and the
28 Director of the Public Works and Development Services Department deem necessary
29 and appropriate; and

30
31 BE IT FURTHER RESOLVED by the Racine County Board of Supervisors that
32 any two of the County Executive, the County Clerk and/or the County Board Chairman
33 are authorized to execute any contracts, agreements, amendments, or other documents
34 necessary to carry out the intent of this resolution.

35 Respectfully submitted,

36
37 1st Reading _____

**PUBLIC WORKS, PARKS, AND FACILITIES
COMMITTEE**

38
39 2nd Reading _____

40
41 BOARD ACTION

Tom Kramer, Chairman

42 Adopted _____

43 For _____

44 Against _____

45 Absent _____

Robert D. Grove, Vice-Chairman

3
4
5
6 VOTE REQUIRED: Majority

Eric Hopkins, Secretary

7
8 Prepared by:
9 Public Works and Development
10 Services Department

Jessica Malacara

11
12 _____
Marlo Harmon

13
14 _____
Greg Horeth

15
16
17 _____
18 (Vacant)

19
20
21 **The foregoing legislation adopted by the County Board of Supervisors of
22 Racine County, Wisconsin, is hereby:**

23 **Approved: _____**

24 **Vetoed: _____**

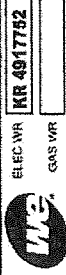
25
26 **Date: _____,**

27
28 _____
29 **Jonathan Delagrave, County Executive**

30
31
32 **INFORMATION ONLY**

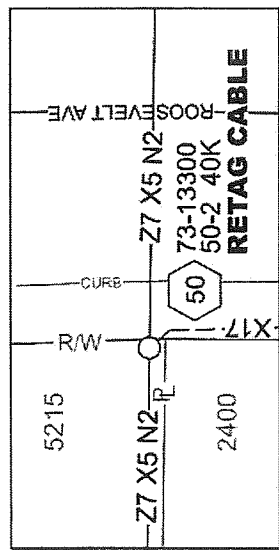
33
34 **WHEREAS, We Energies proposes to install underground utilities in Pritchard
35 Park in the City of Racine, Racine County, Wisconsin; and**

36
37 **WHEREAS, the purpose of this easement would allow We Energies to construct,
38 install, operate, maintain, repair, replace, and extend utility facilities, conduit and cables,
39 electric pad-mounted transformers, electric pad-mounted switch-fuse units, electric pad-
40 mounted vacuum fault interrupter, concrete slabs, power pedestals, riser equipment,
41 terminals and markers, together with all necessary and appurtenant equipment under
42 and above ground, for transmission of electric energy, signals, television and
43 telecommunications services, including the customary growth and replacement thereof.
44 Trees, bushes, branches, and roots may be trimmed or removed so as not to interfere
45 with Grantee's use of the easement area.**
46



ELEC. WR. KR 4917752
GAS WR.

Temporary Exhibit "A"



ENV
8, 27

SPLICES 10

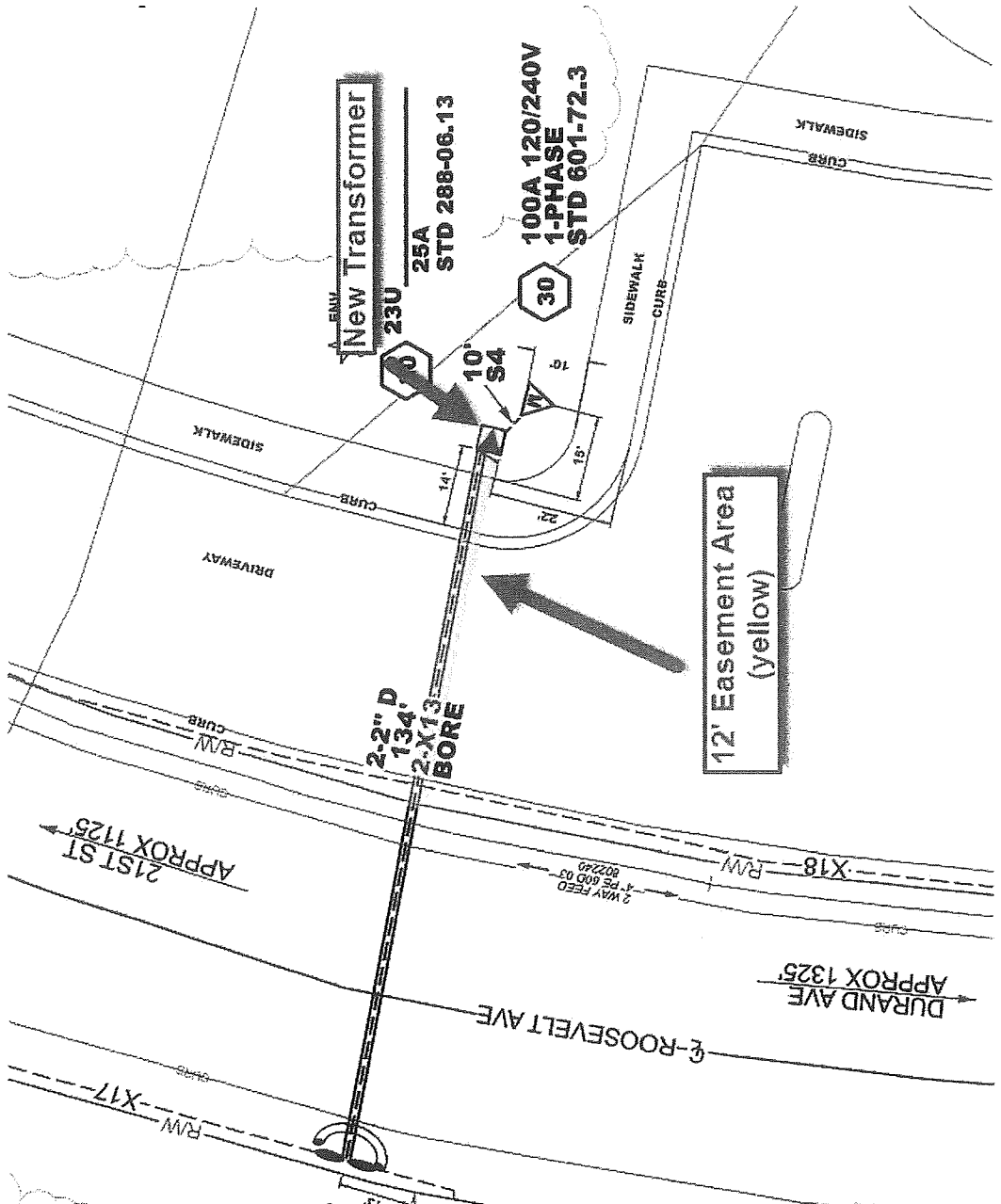
2400

APPROX 485'

87U9172
75-3
120/208
RETAG CABLE

5230

MANUFACTURER:	25
KVA:	120/240
VOLTAGE:	23U
LOCATION ID:	10
PHASE:	DESIGN 1Z
FLUID TYPE:	
SERIAL:	
MATERIAL #:	227-1301
ASSET ID #:	
3 PHASE TRANSFORMER LOAD BREAK SWITCHES? <input type="checkbox"/> Y <input type="checkbox"/> N	
5 WE ENERGIES EQUIPMENT ENERGIZED <input type="checkbox"/> Y <input type="checkbox"/> N	
6 CUSTOMER EQUIPMENT ENERGIZED <input type="checkbox"/> Y <input type="checkbox"/> N EDC:	
SWITCHED BY:	DATE/TIME:



12' Easement Area (yellow)