

FOUNDATION WALL SCHEDULE			
MARK	WIDTH	REINFORCEMENT	COMMENTS
FDN1	0' - 8"	#5 BARS @ 12" OCEW	
FDN2	0' - 8"	#5 BARS @ 18" OCEW	

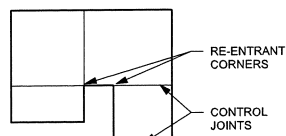
FOOTING SCHEDULE					
MARK	LENGTH	WIDTH	THICKNESS	REINFORCEMENT	COMMENTS
F1		2' - 0"	1' - 0"	(2) #5 BARS LONGITUDINAL	
F2	5' - 0"	5' - 0"	1' - 0"	#5 BARS @ 12" OCEW TOP AND BOTTOM	
F3	6' - 0"	6' - 0"	1' - 0"	#5 BARS @ 12" OCEW TOP AND BOTTOM	
F4		10' - 0"	1' - 0"	#6 BARS @ 12" OC LONGITUDINAL AND #6 BARS @ 6" OC TRANSVERSE	
F5		VARIES	1' - 0"	(2) #5 BARS TOP AND BOTTOM OCEW	

SLAB SCHEDULE			
MARK	THICKNESS	REINFORCEMENT	COMMENTS
SL1	18"	#6 BARS @ 6" OCEW BOTTOM & #6 BARS @ 12" OCEW TOP	
SL2	6"	#6 BARS @ 10" OCEW	
SL3	6"	#5 BARS @ 12" OCEW	

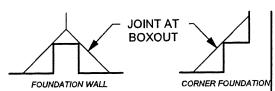
PIER AND PILASTER SCHEDULE				
MARK	LENGTH	WIDTH	REINFORCEMENT	COMMENTS
P1	2' - 2"	2' - 2"	(8) #6 BARS VERTICAL W/ #4 TIES @ 12" OC AND (3) IN THE TOP 12"	

CONTROL JOINT PLACEMENT GUIDELINES

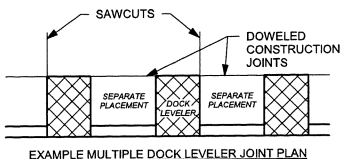
- SPACE JOINTS (IN FEET) NO MORE THAN 2-3 TIMES THE SLAB THICKNESS (IN INCHES). FOR EXAMPLE, A 4" SLAB SHOULD HAVE JOINTS 8' TO 12' APART.
- CUT JOINTS 25% OF THE DEPTH OF SLAB, MIN.
- CUT JOINTS USING GROOVING TOOLS IN FRESH CONCRETE OR SAW CUTTING JOINTS AS SOON AS THE CONCRETE IS HARD ENOUGH THAT THE EDGES ABUTTING THE CUT DONT CHIP FROM THE SAW BLADE.
- IN HOT WEATHER, CONCRETE MIGHT CRACK IF JOINTS ARE NOT CUT WITHIN 6-12 HOURS AFTER FINISHING CONCRETE. PLAN ALTERNATE JOINT CUTTING EQUIPMENT ACCORDINGLY.
- WHERE POSSIBLE, PLACE JOINTS UNDER PROPOSED NON-LOAD-BEARING WALL LOCATIONS OR UNDER CARPET AREAS.
- MINIMIZE RE-ENTRANT CORNERS AND AVOID WHERE POSSIBLE.



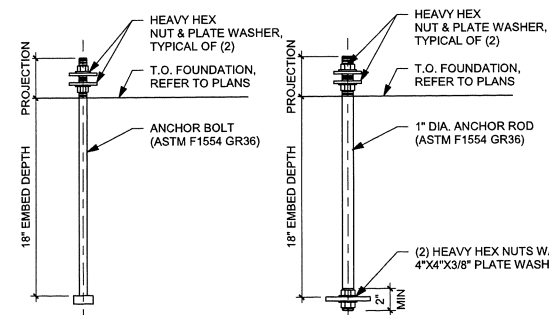
EXAMPLE CONTROL JOINT PLAN



EXAMPLE PILASTER JOINT PLAN



EXAMPLE MULTIPLE DOCK LEVELER JOINT PLAN



HEADED ANCHOR BOLT

ANCHOR ROD W/ PLATE WASHER

2 ANCHOR BOLT DETAIL
1 1/2" = 1'-0"

BASE PLATE LEGEND

BP1

- 1" STEEL BASE PLATE
- (4) 3/4" DIA ASTM F1554 ANCHOR BOLTS WITH NUT
- 12" EMBED
- 5" PROJECTION
- SET BASEPLATE ON 1 1/2" NON-SHRINK GROUT
- PL1/4x2x2 PLATE WASHERS

BP2

- 1" STEEL BASE PLATE
- (4) 3/4" DIA ASTM F1554 ANCHOR BOLTS WITH NUT
- 12" EMBED
- 5" PROJECTION
- SET BASEPLATE ON 1 1/2" NON-SHRINK GROUT
- PL1/4x2x2 PLATE WASHERS

NOTE:
1. BASE PLATES ARE SHOWN FOR REFERENCE ONLY. VERIFY WITH PEMB SUPPLIER.

THIS DOCUMENT IS THE PROPERTY OF I & S GROUP, INC. AND MAY NOT BE USED, COPIED OR DUPLICATED WITHOUT PRIOR WRITTEN CONSENT.

PROJECT

CONSERV FS KANSASVILLE

KANSASVILLE WISCONSIN

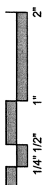
REVISION SCHEDULE		
DATE	DESCRIPTION	BY

PROJECT NO. 23-28114
 FILE NAME 28114 Arch R24.rvt
 DRAWN BY KNM
 DESIGNED BY OA
 REVIEWED BY DCM
 ORIGINAL ISSUE DATE 09/22/23
 CLIENT PROJECT NO.

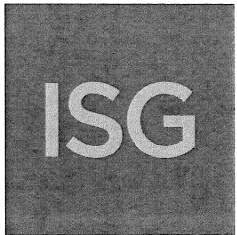
STRUCTURAL SCHEDULES

SHEET

S1-05



KEYNOTE LEGEND	
1	HP1: #5 HAIRPIN W/ 4" - 0" LEGS



THIS DOCUMENT IS THE PROPERTY OF I & S GROUP, INC. AND MAY NOT BE USED, COPIED OR DUPLICATED WITHOUT PRIOR WRITTEN CONSENT.

PROJECT

**CONSERV FS
KANSASVILLE**

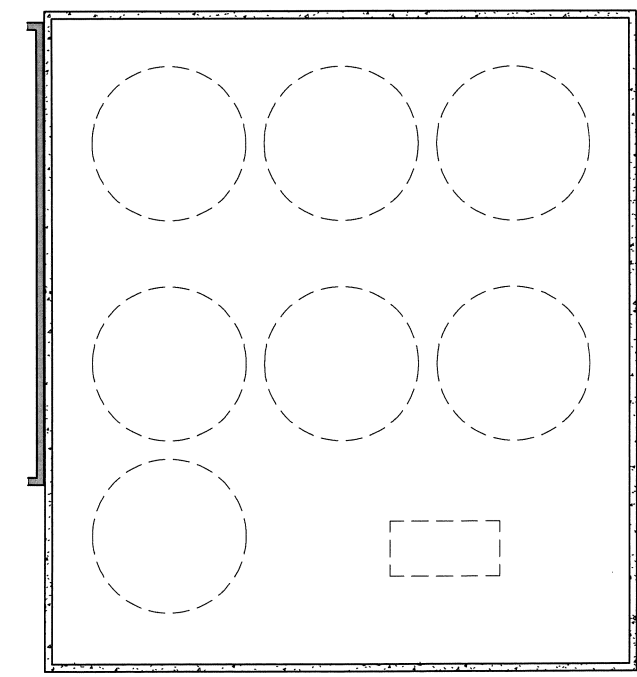
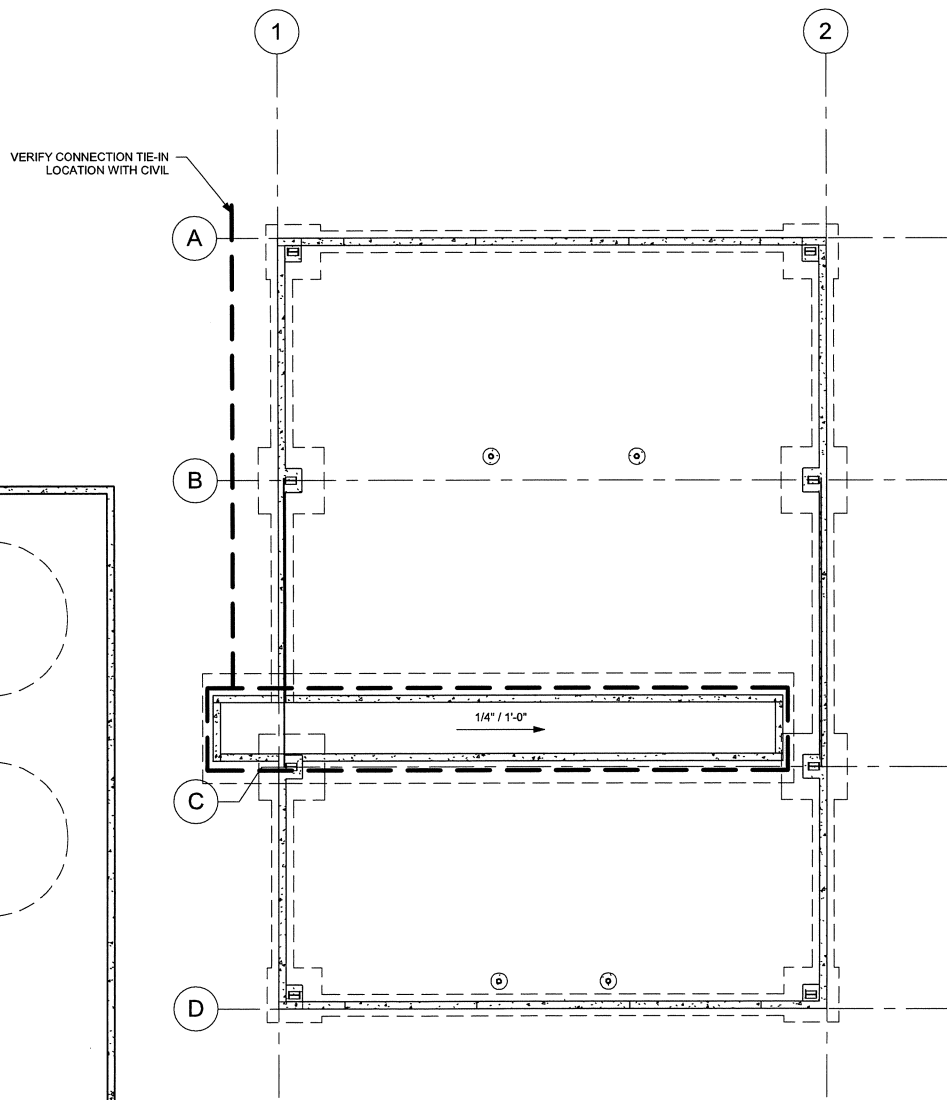
KANSASVILLE WISCONSIN

REVISION SCHEDULE		
DATE	DESCRIPTION	BY

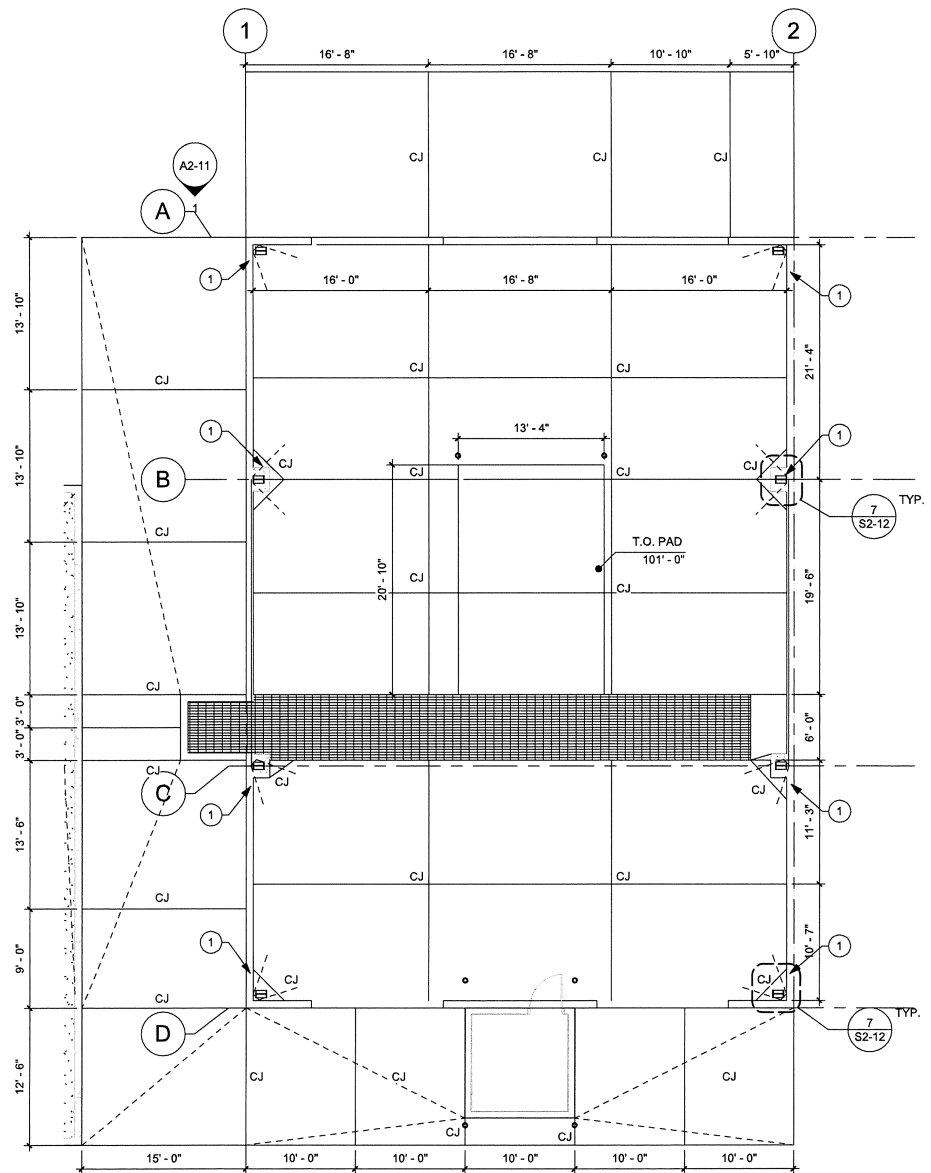
PROJECT NO.	23-28114
FILE NAME	28114 Arch R24.rvt
DRAWN BY	KNM
DESIGNED BY	OA
REVIEWED BY	DCM
ORIGINAL ISSUE DATE	09/22/23
CLIENT PROJECT NO.	

TITLE
**DRAIN TILE &
CONTROL JOINT
PLAN**

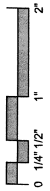
SHEET
S1-21



1 DRAIN TILE PLAN
1/8" = 1'-0"



2 FIRST FLOOR CONTROL JOINT PLAN
1/8" = 1'-0"



SHEET NOTES

- A. REFER TO FOUNDATION DETAILS FOR TYPICAL CONSTRUCTION JOINT AND CONTROL JOINT DETAILS.
- B. REFER TO CIVIL FOR GRADING

KEYNOTE LEGEND

3	CONFIRM HOUSEKEEPING PAD HEIGHT AND EXTENTS WITH EOR PRIOR TO INSTALLATION
4	12" THICKENED EDGE AROUND EXTERIOR BUILDING SLAB FOOTPRINT



THIS DOCUMENT IS THE PROPERTY OF I & S GROUP, INC. AND MAY NOT BE USED, COPIED OR DUPLICATED WITHOUT PRIOR WRITTEN CONSENT.

PROJECT

**CONSERV FS
KANSASVILLE**

KANSASVILLE WISCONSIN

REVISION SCHEDULE		
DATE	DESCRIPTION	BY

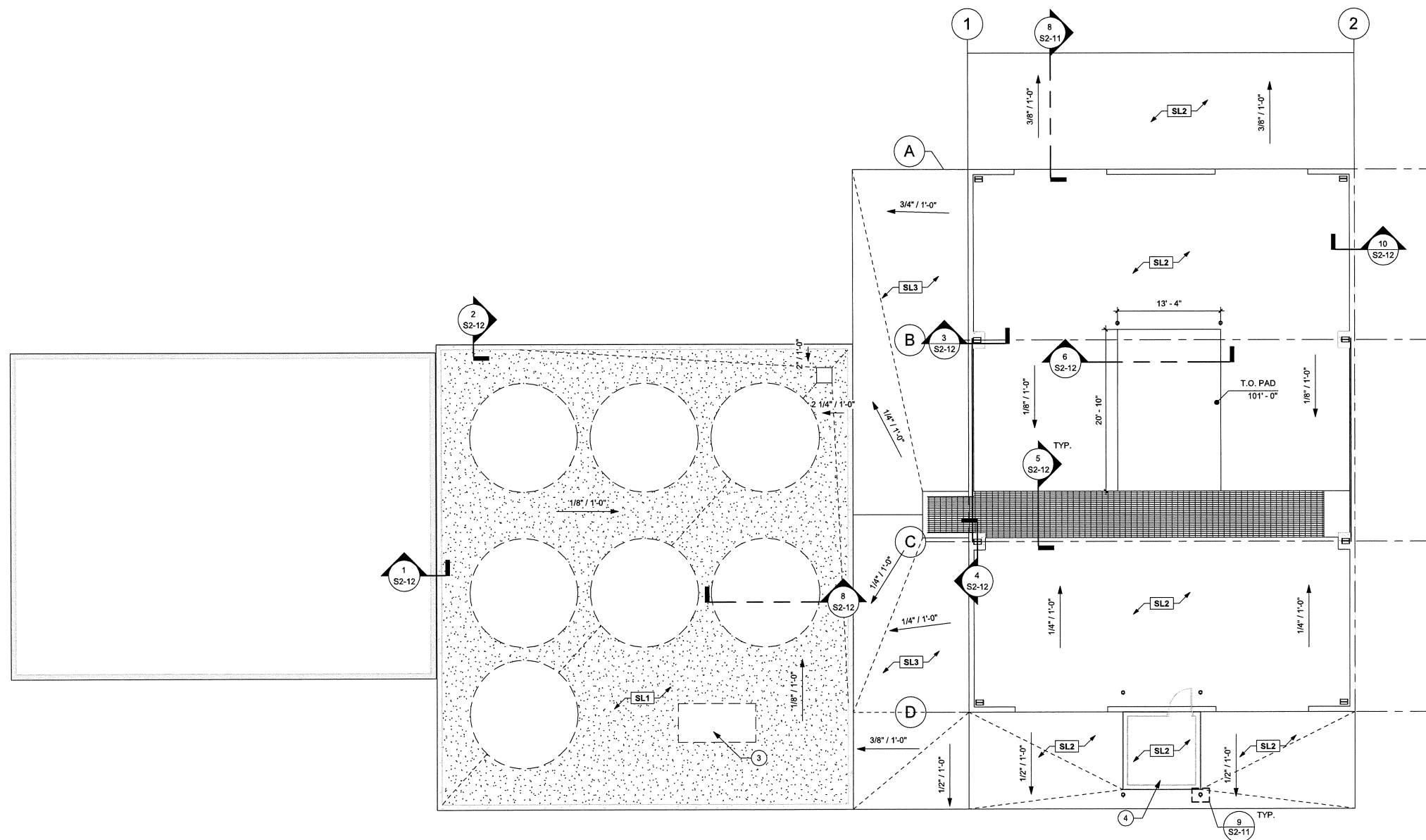
PROJECT NO.	23-28114
FILE NAME	28114 Arch R24.rvt
DRAWN BY	KNM
DESIGNED BY	QA
REVIEWED BY	DCM
ORIGINAL ISSUE DATE	09/22/23
CLIENT PROJECT NO.	

TITLE

SLAB PLAN

SHEET

S1-31



1 FIRST FLOOR SLAB PLAN
1/8" = 1'-0"

