

**Racine County  
Youth Development and Care Center**

**Exhibit I – RCYDCC – ECONOMIC INCLUSION PLAN**

To demonstrate good faith efforts to place Racine County residents as priority toward building significant capacity in both workforce and businesses, Racine County will conduct outreach and foster engagement with trade contractors, suppliers, vendors and professional services firms to endeavor to achieve the following economic inclusion plan.

**Business Contracting and Inclusion Goals**

Priority for direct and indirect contracts to qualified Racine County based businesses. The business must provide meaningful operational delivery of services with local employees and management at its location for a minimum of six months prior to proposal or bid submission. Functions can include, but not be limited to, operations, sales, supportive departments, equipment storage, and the like. The business must also be registered with and have paid sales and other taxes to the Wisconsin Department of Revenue. Documentation to substantiate the location is required and must be verifiable through Wisconsin state agencies and other sources. The business must not have any active exclusions in the System for Award Management (SAM) database (www.SAM.gov)

**Business Inclusion Goals**

	Professional Services	Construction
<b>Racine County-based Businesses</b>	<b>5%</b>	<b>25%</b>
<b>Racine County-based Businesses</b>	<b>5% Combined</b>	<b>5% Combined</b>
<b>Minority-Owned (MBE) Business Enterprises</b>		
<b>Woman-Owned (WBE) Enterprises</b>		
<b>Small Business (SBE) Enterprises</b>		
<b>Veteran-Owned Business Enterprises</b>		

**Registration and Certification Requirements**

Business Category	Registration/Certification Type
Racine County-based Business	<a href="#">Wisconsin Department of Financial Institutions</a>
Minority-Owned Business Enterprise	<a href="#">Wisconsin Department of Administration (MBE)</a>
Women-Owned Business Enterprise	<a href="#">Women’s Business Enterprise National Council (WBENC) (WBE)</a> <a href="#">National Minority Supplier Development Council (NMSDC) (MBE)</a> <a href="#">Wisconsin Department of Transportation (DBE)</a>
Small Business Enterprise	<a href="#">City of Milwaukee Office of Small Business Development (SBE)</a>
Veteran-Owned Business Enterprise	<a href="#">Wisconsin Department of Veterans Affairs</a>

**Business Inclusion Compliance**

Professional Services Partners and Trade Contractors will be required to substantiate economic business inclusion through monthly reporting, using project established electronic methods.

**Racine County  
Youth Development and Care Center**

**Exhibit I – RCYDCC – ECONOMIC INCLUSION PLAN**

**Workforce Inclusion and Diversity Goals**

Priority to hire qualified Racine County residents, minorities or people of color, women and veterans.

**Workforce Inclusion Goals**

	Professional Services	Construction
Racine County Residents	10% Combined	30%
Racine County Residents from Approved Training Programs		See Workforce Inclusion – Workforce Mentoring Program Below
Minorities or People of Color*	25% Combined	25% Combined
Women		
Veterans		

\*

*Minorities or People of Color as defined: American Indian or Alaska Native – Asian – Black or African American – Hispanic or Latino – Native Hawaiian or Other Pacific Islander. Federal Register / Vol. 62, No. 10*

**Workforce Inclusion – Workforce Mentoring Program**

	Construction
Racine County Residents from Workforce Mentoring Program	Minimum of 5 Trades Mentee Workers

**Workforce Inclusion Compliance**

Professional Services Partners and Trade Contractors will be required to substantiate workforce inclusion through certified payrolls. Certified payroll must include information regarding a worker’s address, city, state, zip code, county, gender, race/ethnicity and veteran status. Workforce hours are calculated based on the employee’s recorded address.

Racine County  
Youth Development and Care Center

Exhibit I – RCYDCC – ECONOMIC INCLUSION PLAN

Definitions

- **Racine County-Based Businesses** means Racine County (below noted areas that fall within the Racine County Limits).
  - Cities of Burlington and Racine, Villages of Caledonia, Elmwood Park, Mount Pleasant, North Bay, Raymond, Rochester, Sturtevant, Union Grove, Waterford, Wind Point, and Yorkville, Towns of Burlington, Dover, Norway, and Waterford, and Unincorporated communities of Buena Park, Caldwell, Cedar Park, Eagle Lake Manor, Eagle Lake Terrace, Franksville, Honey Creek, Honey Lake, Husher, Ives Grove, Kansasville, North Cape, Raymond, Tichigan, Union Church, and Yorkville; and any future municipalities created within the boundaries of Racine County.
  - The business must provide meaningful operational delivery of services with local employees and management at this location for a minimum of six months prior to proposal or bid submission. Functions can include but not be limited to operations, sales, supportive departments, equipment storage and the like. The business must also be registered with and have paid sales and other taxes to the Wisconsin Department of Revenue. Documentation to substantiate the location is required and must be verifiable through Wisconsin state agencies and other sources. The business must not have any active exclusions in the System for Award Management (SAM) database ([www.SAM.gov](http://www.SAM.gov))
  - Supply Chain businesses are recognized as firms that provide materials and supplies, lease equipment, manufacture or fabricate products from raw materials or substantially alter the material or supplies obtained by the contractor/vendor, are Regular Dealers, and provide transportation services.
- **Professional Services** means services requiring specialized knowledge and skill, usually of a mental or intellectual nature and usually requiring a license, certification, or registration. Services include but are not limited to architectural, engineering, Surveying, Environmental Testing and Investigation, Commissioning, Exterior Enclosure Consultants and Economic Inclusion Compliance Tracking Agent.
- **Construction Services** means all aspects of constructing, fabricating, installing, erecting, and maintaining utilities and facilities of all types
- **Qualified Firm** means a firm that meets the requirements as defined for Racine County-based Business and/or Minority-Owned, Woman-Owned, Small, and Veteran-Owned Business Enterprises.
- **Racine County Resident** means workforce with main residence located within the Racine County limits (below noted areas that fall within the Racine County Limits). For Construction Services, the resident must be performing work on the project site.
  - Cities of Burlington and Racine, Villages of Caledonia, Elmwood Park, Mount Pleasant, North Bay, Raymond, Rochester, Sturtevant, Union Grove, Waterford, Wind Point, and Yorkville, Towns of Burlington, Dover, Norway, and Waterford, and Unincorporated communities of Buena Park, Caldwell, Cedar Park, Eagle Lake Manor, Eagle Lake Terrace, Franksville, Honey Creek, Honey Lake, Husher, Ives Grove, Kansasville, North Cape, Raymond, Tichigan, Union Church, and Yorkville; and any future municipalities created within the boundaries of Racine County.
- **Trades Mentee Worker** means selected Trade Mentoring Program candidate who is an identified unemployed or underemployed Racine County resident that is paired with a Racine County Success Coach, trained by a Racine County approved training program, and hired by a Prime trade partner. Unemployed / Underemployed means as defined by Racine County as households that fall in the current federal fiscal year Income Limit Categories of Extremely Low, Very Low and Low as compared to the current federal fiscal year Median Family Income Limit established for the Racine County Area. Reference link for current fiscal year information: <https://www.huduser.gov/portal/datasets/il.html>
- **Approved Training Program** means Gateway Technical College, WRTP | Big Step, First Choice Pre-Apprenticeship program, or other Racine County approved program.
- **Racine County Success Coach** means Racine County Workforce Development approved and trained volunteer paired with

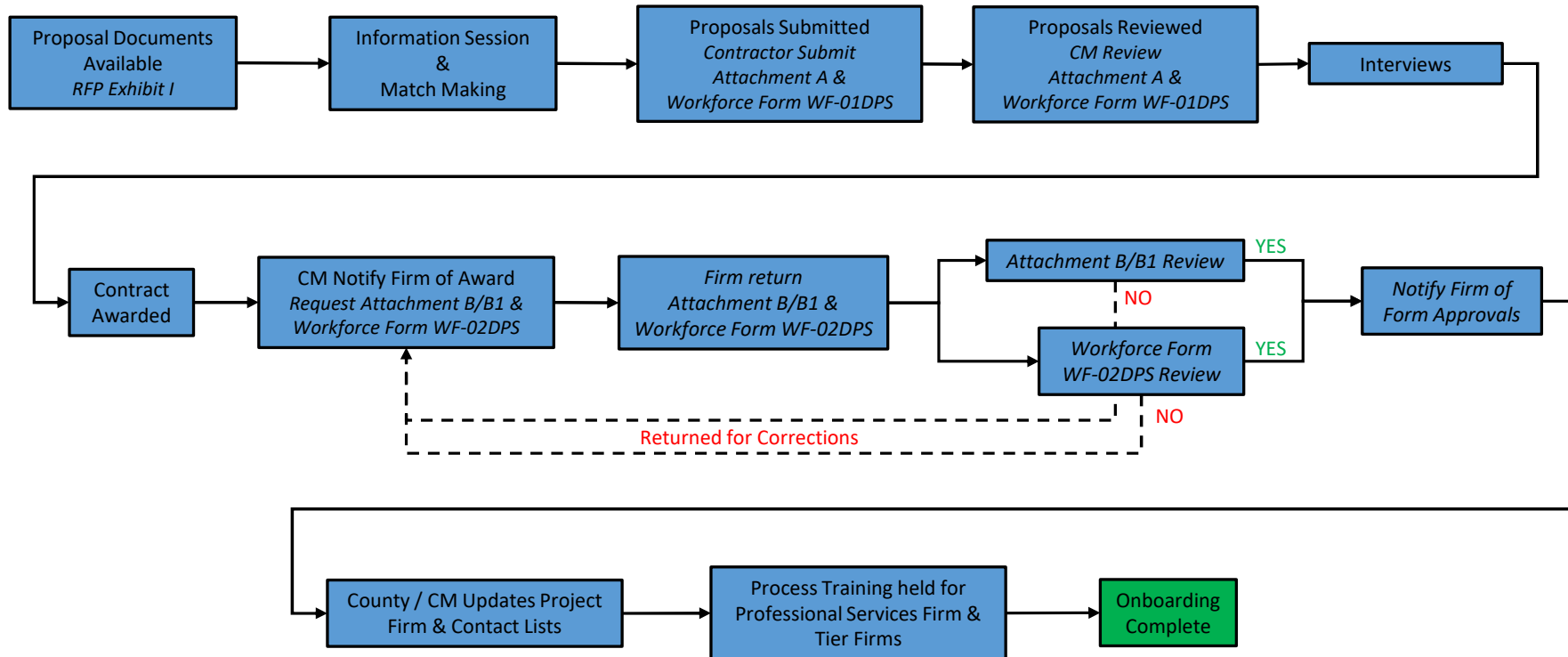
**Racine County  
Youth Development and Care Center**

**Exhibit I – RCYDCC – ECONOMIC INCLUSION PLAN**

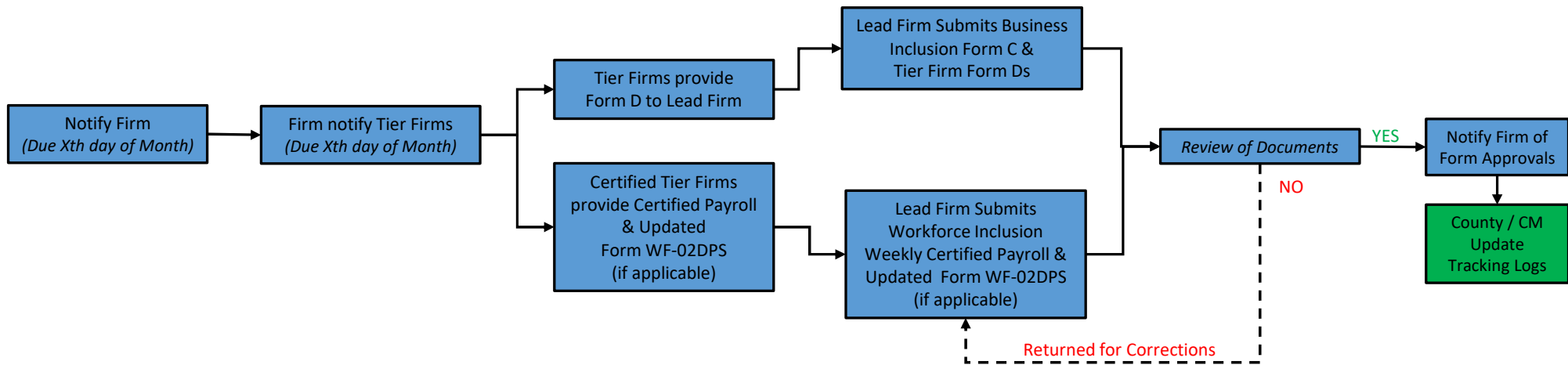
---

the Trades Mentee Worker to help identify and resolve the issues that are affecting employment success, utilizing county provided resources.

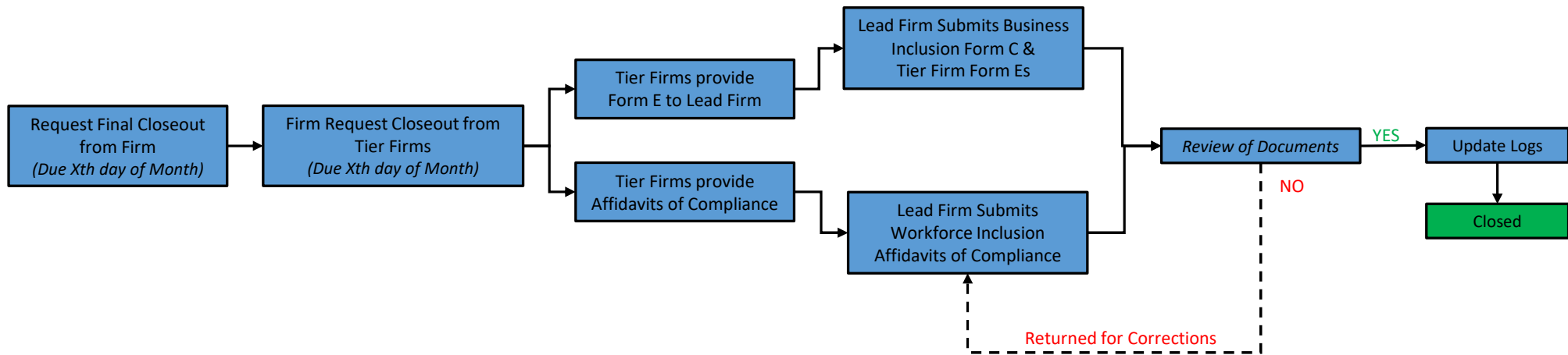
DRAFT



## Commitment & Validation Process – Professional Services



## Monthly Reporting Process – Professional Services



## EIP Closeout Process – Professional Services

**Racine County  
Secure Residential Care Center for Children and Youth**

**ECONOMIC INCLUSION PLAN**

**STATEMENT OF INTENT**

**(“ATTACHMENT A”)**

**Letter of Intent from Business to Perform as Trade Contractor or Professional Services Firm**

**RFP/BID RELEASE #:** \_\_\_\_\_

---

Name of Project: Racine County Secure Residential Care Center for Children and Youth (Racine County SRCCCY)

Project Number: \_\_\_\_\_

---

(Legal Business Name)

---

(Full Business Address)

The undersigned intends to perform work in connection with the above-referenced project as (check one):

\_\_\_\_\_ a Sole Proprietor      \_\_\_\_\_ a Corporation

\_\_\_\_\_ a Partnership      \_\_\_\_\_ a Joint Venture

The business status of the undersigned is confirmed by the attached Letter of Certification, effective \_\_\_\_\_. In addition, in the case where the undersigned is a Joint Venture, provide a copy of Joint Venture Agreement.

The undersigned is prepared to provide the following described services or supply the following described goods in connection with the above-named project:

The above described services or goods are offered for the following price, with terms of payment as stipulated in the Contract Documents: \$

**PARTIAL PAY ITEMS**

For any of the above items which are partial pay items, specifically describe the work and subcontract dollar amount:

If more space is needed to fully describe the business firm’s proposed scope of work and/or payment schedule, attach additional sheet(s).





Racine County
Secure Residential Care Center for Children and Youth

ECONOMIC INCLUSION PLAN

STATEMENT OF INTENT

(“ATTACHMENT A”)

Letter of Intent from Business to Perform as Trade Contractor or Professional Services Firm

RFP/BID RELEASE #: \_\_\_\_\_

SUB-SUBCONTRACTING LEVEL COMMITMENTS

% of the dollar value of the business trade contracts or professional services agreements that will be awarded by contract and/or purchase order to Racine County-based business contractors or professional services firms.

% of the dollar value of the business trade contracts or professional services agreements that will be awarded by contract and/or purchase order to Targeted Business contractors or professional services firms.

% of the dollar value of the business trade contracts or professional services agreements that will be awarded by contract and/or purchase order to non-Racine County based business contractors.

If business subcontractor will not be sub-subcontracting any of the work described in this Letter of Intent, a zero (0) must be filled in each blank above. If more than 10% percent of the value of the business subcontractor’s scope of work will be sublet, a brief explanation and description of the work to be sublet must be provided.

I declare and affirm that to the best of my knowledge, information, and belief, the facts and representations set forth in this document are true and correct and no material facts have been omitted.

By:

Business Name

Authorized Representative’s Signature

Date

Authorized Representative’s Name

Phone

Authorized Representative’s Title

Check all that apply:

Racine County based

MBE

WBE

SBE

Veteran Owned

Non-Racine County based

IF APPLICABLE

By:

JV Partner Company Name

Authorized Representative’s Signature

Date

Authorized Representative’s Name

Phone

Authorized Representative’s Title



**Racine County  
Secure Residential Care Center for Children and Youth**

**ECONOMIC INCLUSION PLAN  
Workforce Inclusion Commitment  
(Form WF-01DPS)**

**DESIGN & PROFESSIONAL SERVICES**

**This form must be submitted at time of proposal or bid submission**

**Table A. Minimum commitment of Prime Professional Services Provider**

	Minimum participation requirements of SRCCY contract holder	
COMMITMENT	RACINE COUNTY (%)	MINORITIES or PEOPLE OF COLOR WOMEN VETERANS (%)
	10%	25% Combined

**Table B. Firm Name: \_\_\_\_\_**

	Minimum workforce inclusion commitment if awarded a contract	
Estimated Total Workforce Hours: _____	RACINE COUNTY (%)	MINORITIES or PEOPLE OF COLOR WOMEN VETERANS (%)
_____ % Hours	_____ %	_____ %

Submitted by:

\_\_\_\_\_  
COMPANY NAME

\_\_\_\_\_  
NAME (PRINT)

\_\_\_\_\_  
TITLE

\_\_\_\_\_  
EMAIL ADDRESS

\_\_\_\_\_  
PHONE

\_\_\_\_\_  
SIGNATURE

\_\_\_\_\_  
DATE