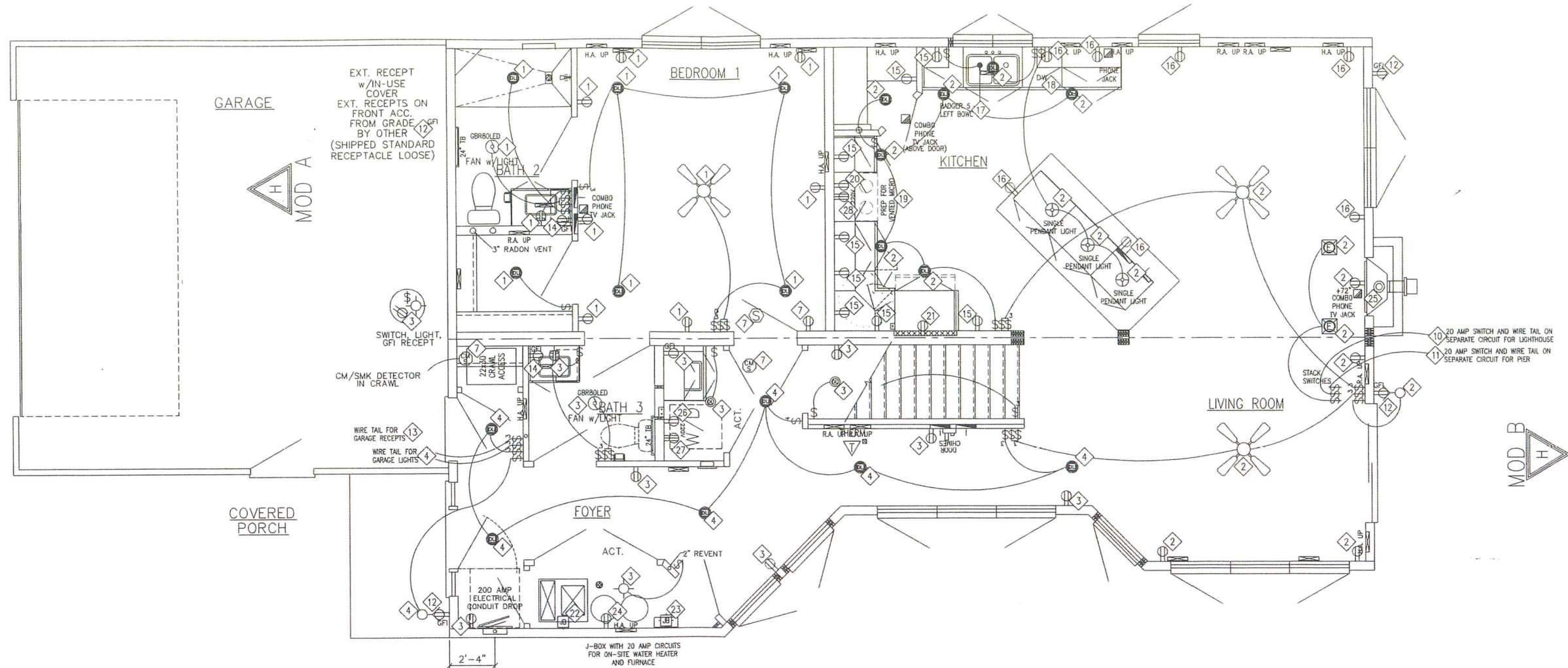


FRONT ELEVATION



APPROVED BY
NIA 3/22/2022
Approval of this document does not authorize or approve any deviation or deviations from the requirements of applicable State Law.

Stratford Homes
 LIMITED PARTNERSHIP
custom modular designs
 www.stratfordhomes.com

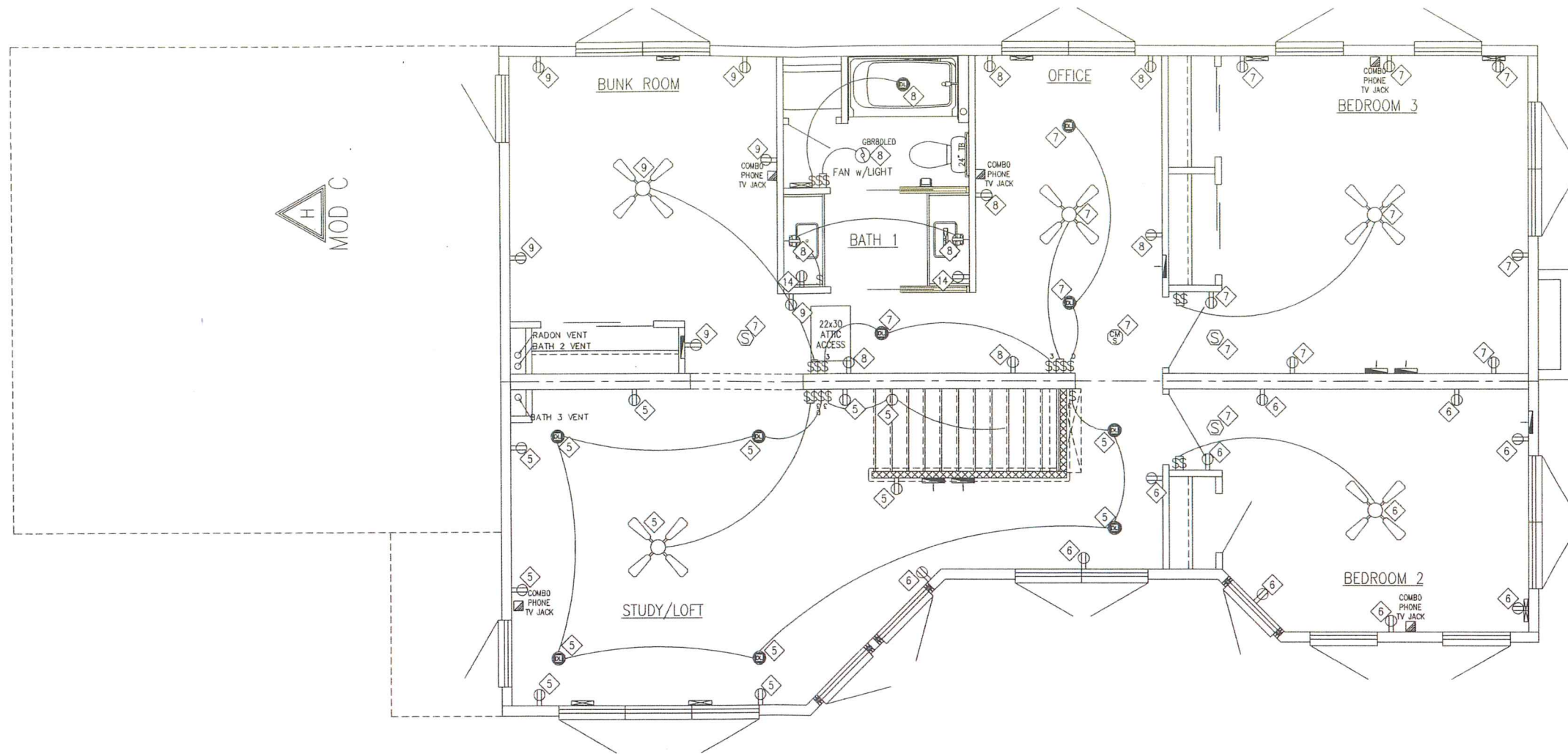
QUOTE:
 Q21-352
 SN:10763

BUILDER: TURN KEY HOMES
 CUSTOMER: CROWE/TROMP TICHIGAN, VI
 TSM: BW
 MODEL: 30'-4"x41' "C" 2 STORY

| REVISIONS | | | | | | | | | | | |
|-----------|---------------|-----|------|-------------|----|------|-------------|----|------|-------------|----|
| DATE | DESCRIPTION | BY | DATE | DESCRIPTION | BY | DATE | DESCRIPTION | BY | DATE | DESCRIPTION | BY |
| 11/5/21 | FPI/ELEV | SK | | | | | | | | | |
| 1-11-22 | ORDER READING | NHP | | | | | | | | | |
| 1-24-22 | PURCHASING | NHP | | | | | | | | | |
| 1-24-22 | FBIALS | NHP | | | | | | | | | |

TITLE: 1ST FLOOR ELECTRICAL
 SCALE: 1/4"=1'
 PAGE: E100

FRONT ELEVATION



MOD C

MOD D

APPROVED BY
NIA
 3/22/2022
Approval of this document does not authorize or approve any deviation or deviations from the requirements of applicable State Laws

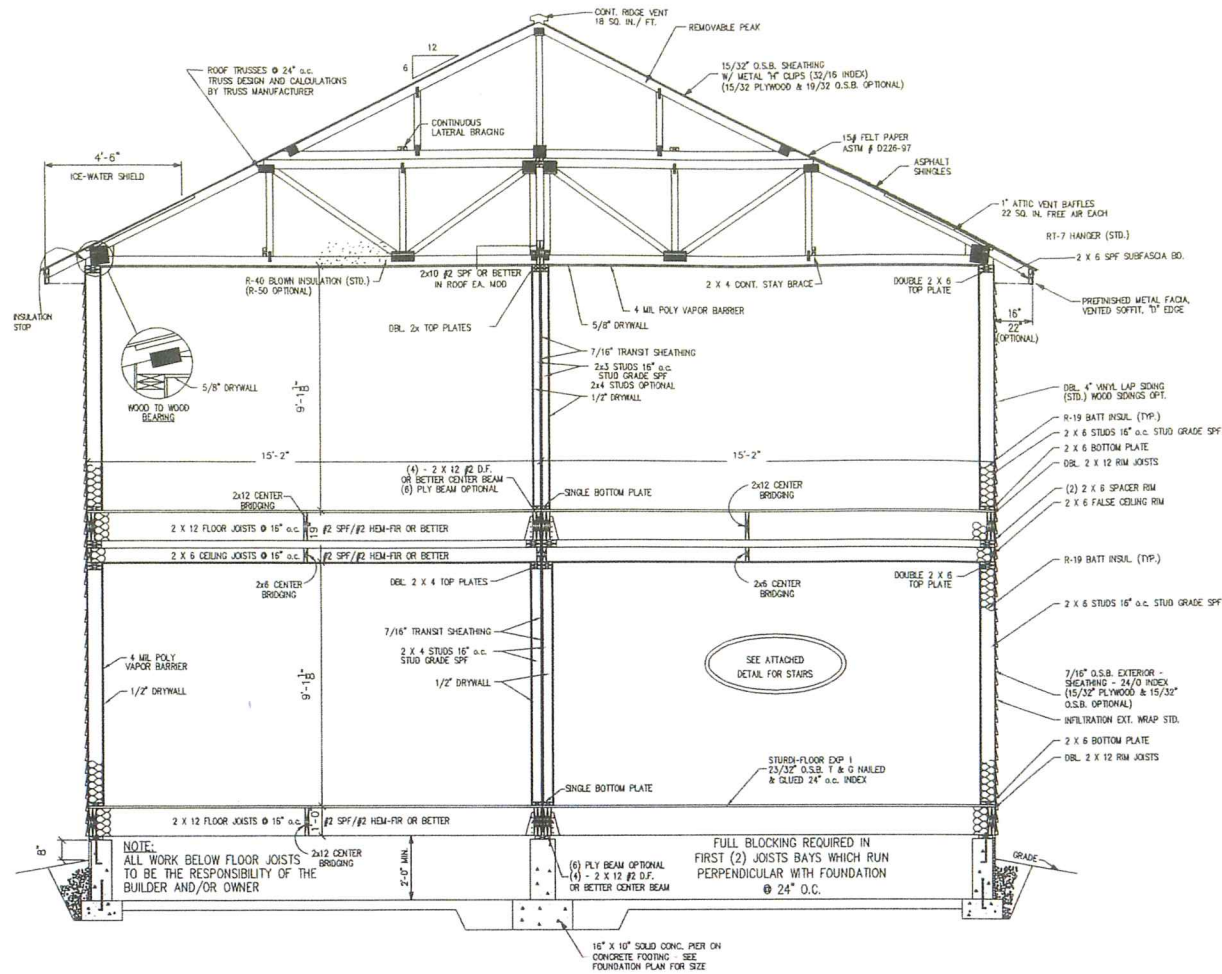
Stratford Homes
 LIMITED PARTNERSHIP
custom modular designs
 WWW.STRATFORDHOMES.COM

QUOTE:
 Q21-352
 SN:10763

BUILDER: TURN KEY HOMES
 CUSTOMER: CROWE/TROMP ICHIGAN, WI
 TSM: BWY
 MODEL: 30'-4"x44' "C" 2 STORY

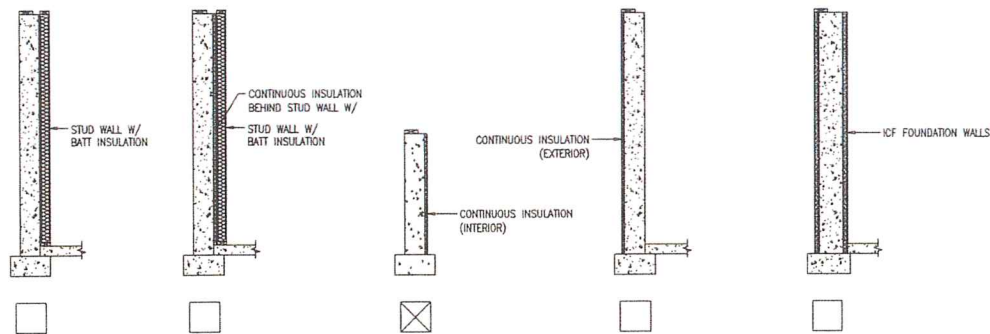
| REVISIONS | | | | | | | | | | | |
|-----------|---------------|-----|------|-------------|----|------|-------------|----|------|-------------|----|
| DATE | DESCRIPTION | BY | DATE | DESCRIPTION | BY | DATE | DESCRIPTION | BY | DATE | DESCRIPTION | BY |
| 11/9/21 | FPI/ELEV | SK | | | | | | | | | |
| 1-11-22 | ORDER READING | NHP | | | | | | | | | |
| 1-24-22 | PURCHASING | NHP | | | | | | | | | |
| 1-24-22 | FINALS | NHP | | | | | | | | | |

TITLE: 2ND FLOOR ELECTRICAL
 SCALE: 1/4"=1'
 PAGE: E101

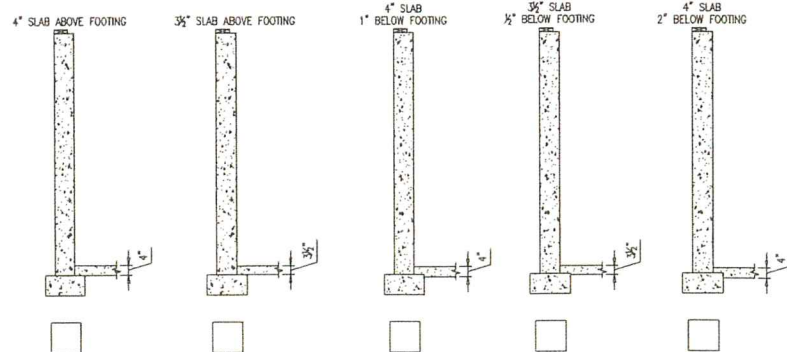


CUT SECTION

OPTIONAL INSULATION METHODS (ON-SITE BY BUILDER)

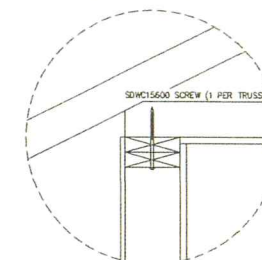


OPTIONAL SLABS (ON-SITE BY BUILDER)



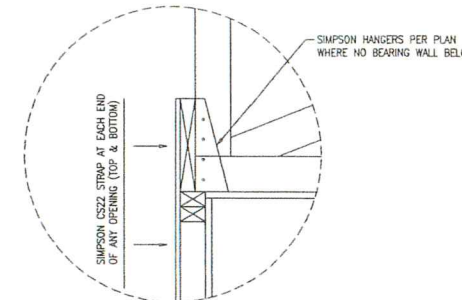
FASTENING DETAILS

DETAIL 1



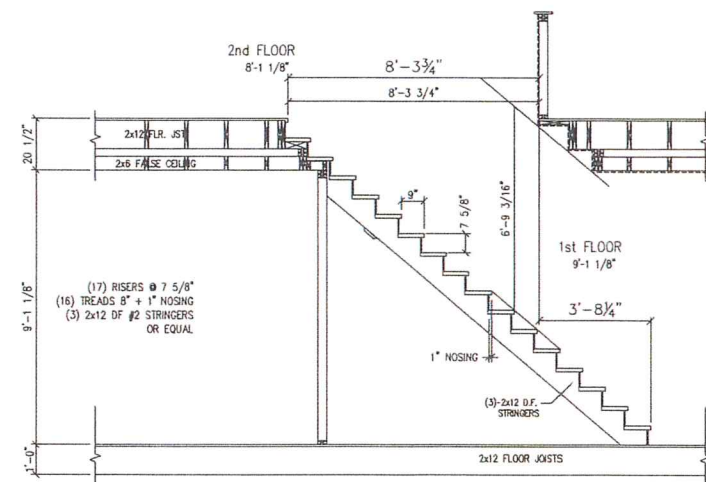
WOOD - WOOD

DETAIL 2



NOTE: (2) .131 X 3\"/>

APPROVED BY
NIA 3/22/2022
 Approval of this document does not authorize or approve any deviation or deviations from the requirements of applicable State Laws.



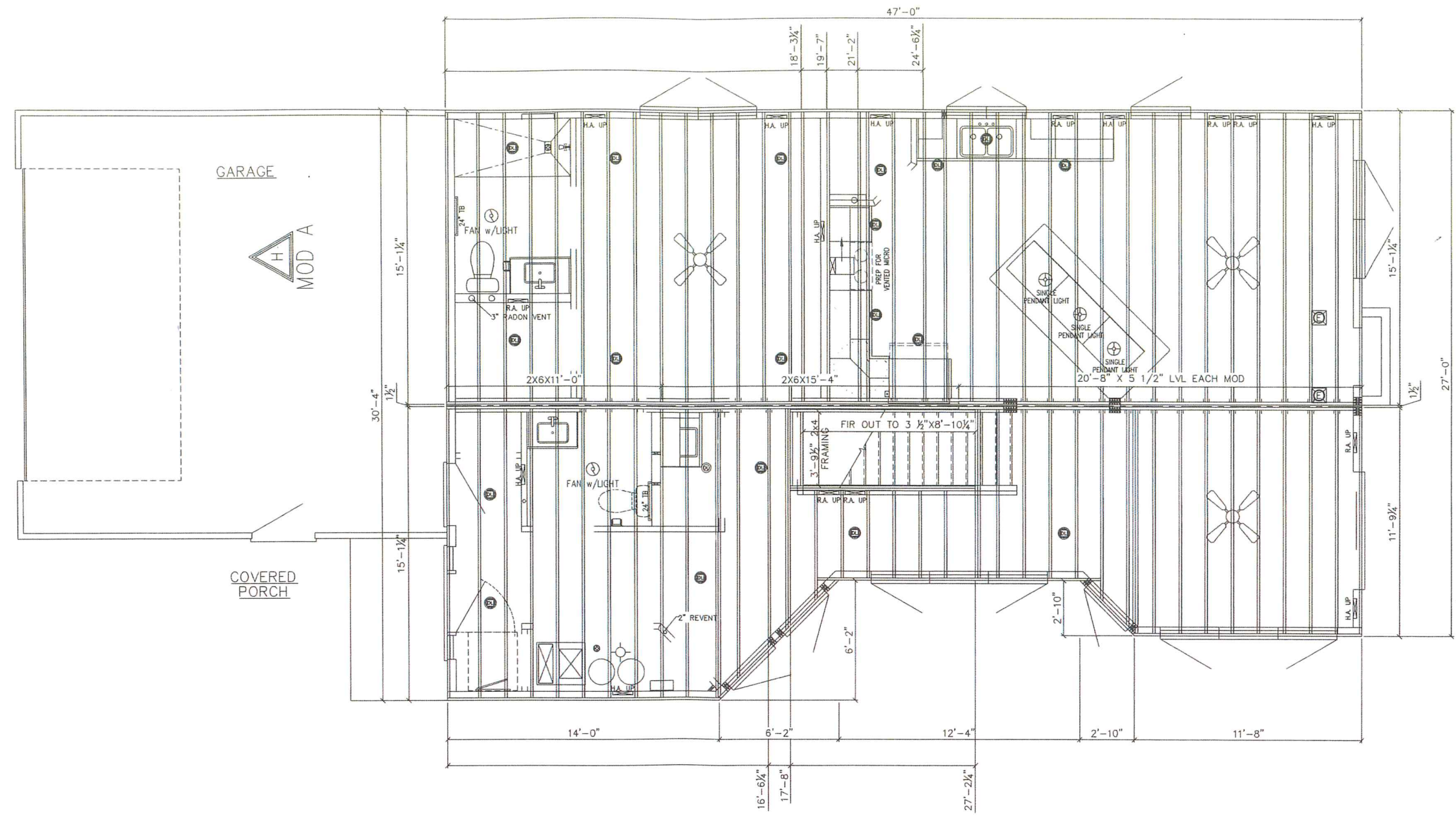
Stratford Homes
 LIMITED PARTNERSHIP
 custom modular designs
 WWW.STRATFORDHOMES.COM

QUOTE:
 Q21-352
 SN:10763

| BUILDER: | CUSTOMER: | REVISIONS | | | | | | | | | | | |
|----------------|--------------------------|-----------|---------------|-----|------|-------------|----|------|-------------|----|--|--|--|
| | | DATE | DESCRIPTION | BY | DATE | DESCRIPTION | BY | DATE | DESCRIPTION | BY | | | |
| TURN KEY HOMES | CROWE/TROMP TICHIGAN, WI | 1-15-21 | FP/LEV | SK | | | | | | | | | |
| | | 1-11-22 | ORDER READING | NHP | | | | | | | | | |
| | | 1-24-22 | PURCHASING | NHP | | | | | | | | | |
| | | 1-24-22 | FNALS | NHP | | | | | | | | | |

TITLE: CROSS SECTION 1
 SCALE: 1/4"=1'
 PAGE: S100

FRONT ELEVATION



APPROVED BY
NIA
 3/22/2022
Approval of this document does not authorize or approve any deviation or deviations from the requirements of Applicable State Laws

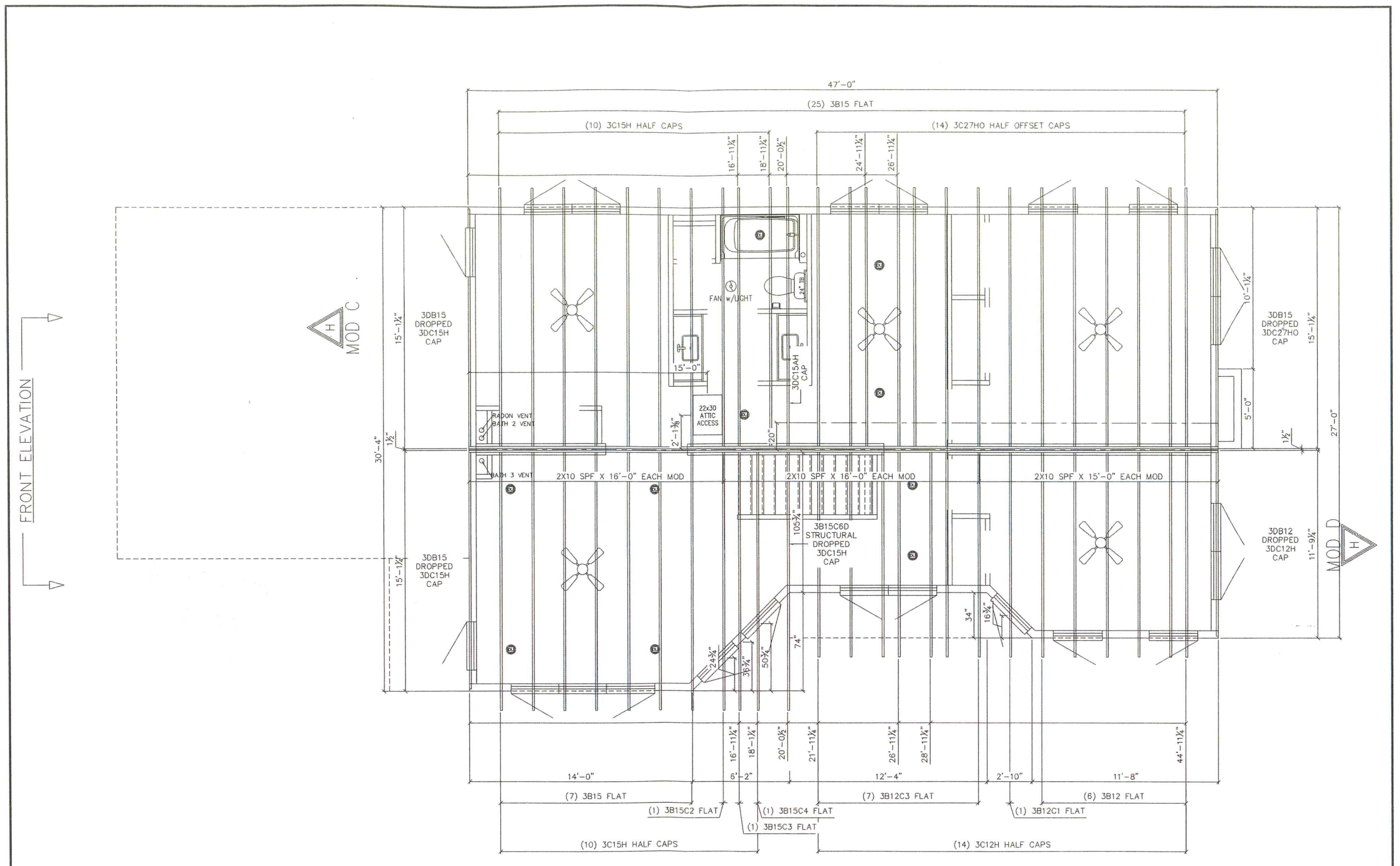
Stratford Homes
 LIMITED PARTNERSHIP
custom modular designs
 WWW.STRATFORDHOMES.COM

QUOTE:
 Q21-352
 SN:10763

BUILDER:
 TURN KEY HOMES
 CUSTOMER:
 CROWETROMP
 TICHIGAN, WI
 TSM:
 BW
 MODEL:
 39'-4"x47'-10" 2 STORY

| REVISIONS | | | | | |
|-----------|---------------|-----|------|-------------|----|
| DATE | DESCRIPTION | BY | DATE | DESCRIPTION | BY |
| 11/5/21 | FP/ELEV | SK | | | |
| 1-11-22 | ORDER READING | NHP | | | |
| 1-24-22 | PURCHASING | NHP | | | |
| 1-24-22 | FINALS | NHP | | | |

TITLE:
**FIRST FLOOR
 ROOF LAYOUT**
 SCALE:
 1/4"=1'
 PAGE:
RF1



APPROVED BY
NIA 3/22/2022
 Approval of this document does not authorize or approve any deviation or deviations from the requirements of applicable State Laws

Stratford Homes
 LIMITED PARTNERSHIP
custom modular designs
 WWW.STRATFORDHOMES.COM

QUOTE:
 Q21-352
 SN:10763

| BUILDER | CUSTOMER | TSM | MODEL |
|----------------|--------------------------|-----|-----------------------|
| TURN KEY HOMES | CROWE/TROMP TICHIGAN, MI | BW | 30'4"x47' "C" 2 STORY |

| REVISIONS | | | | | | | | | | | |
|-----------|---------------|-----|------|-------------|----|------|-------------|----|------|-------------|----|
| DATE | DESCRIPTION | BY | DATE | DESCRIPTION | BY | DATE | DESCRIPTION | BY | DATE | DESCRIPTION | BY |
| 11/5/21 | FP/ELEV | SK | | | | | | | | | |
| 11-11-22 | ORDER READING | NHP | | | | | | | | | |
| 1-24-22 | PURCHASING | NHP | | | | | | | | | |
| 1-24-22 | FINALS | NHP | | | | | | | | | |

TITLE: SECOND FLOOR ROOF LAYOUT
 SCALE: 1/4"=1'
 PAGE: RF2