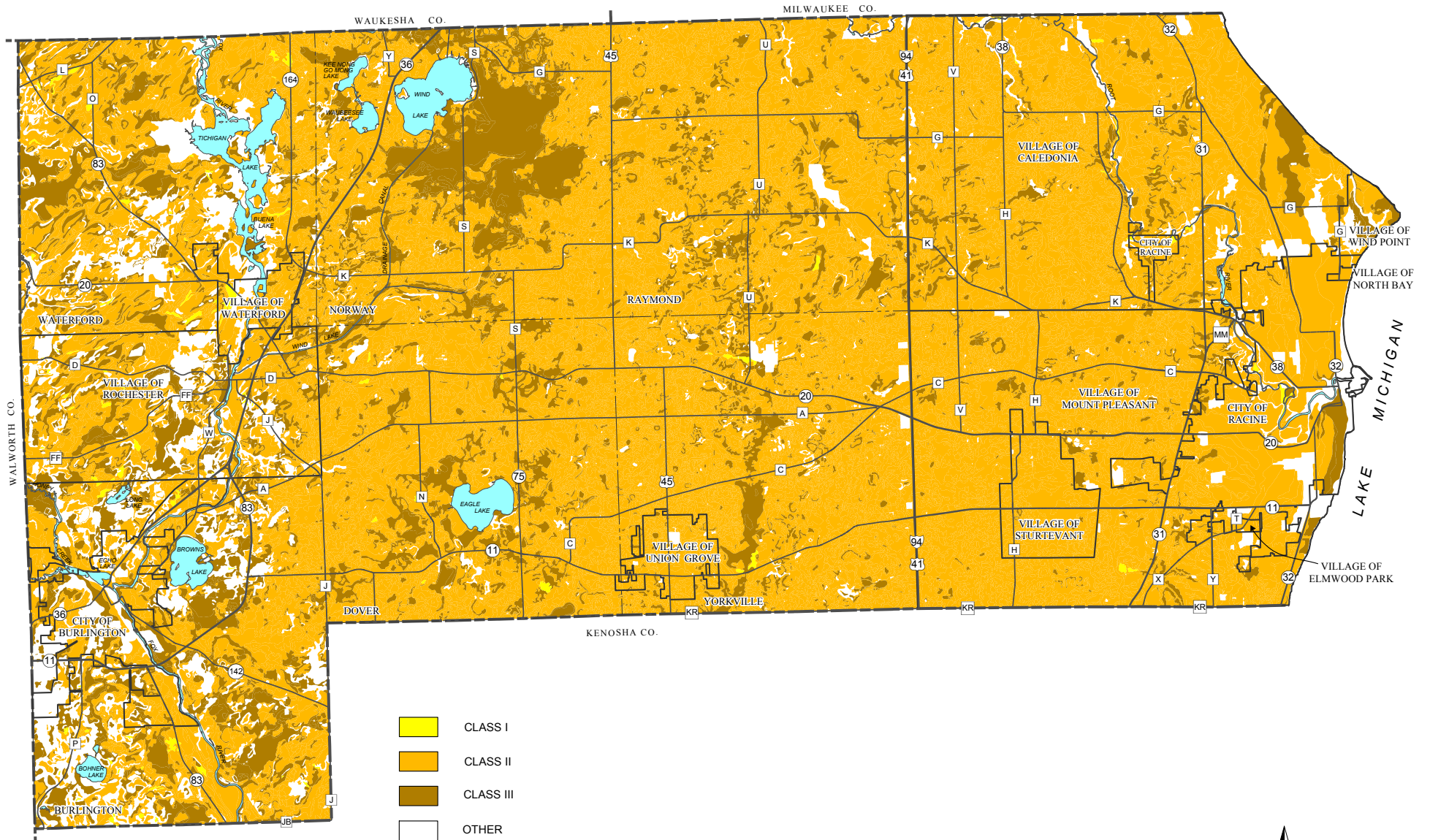
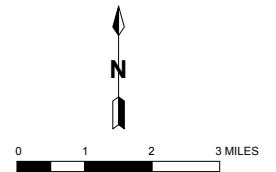


Map 1

AGRICULTURAL SOIL CAPABILITY IN RACINE COUNTY

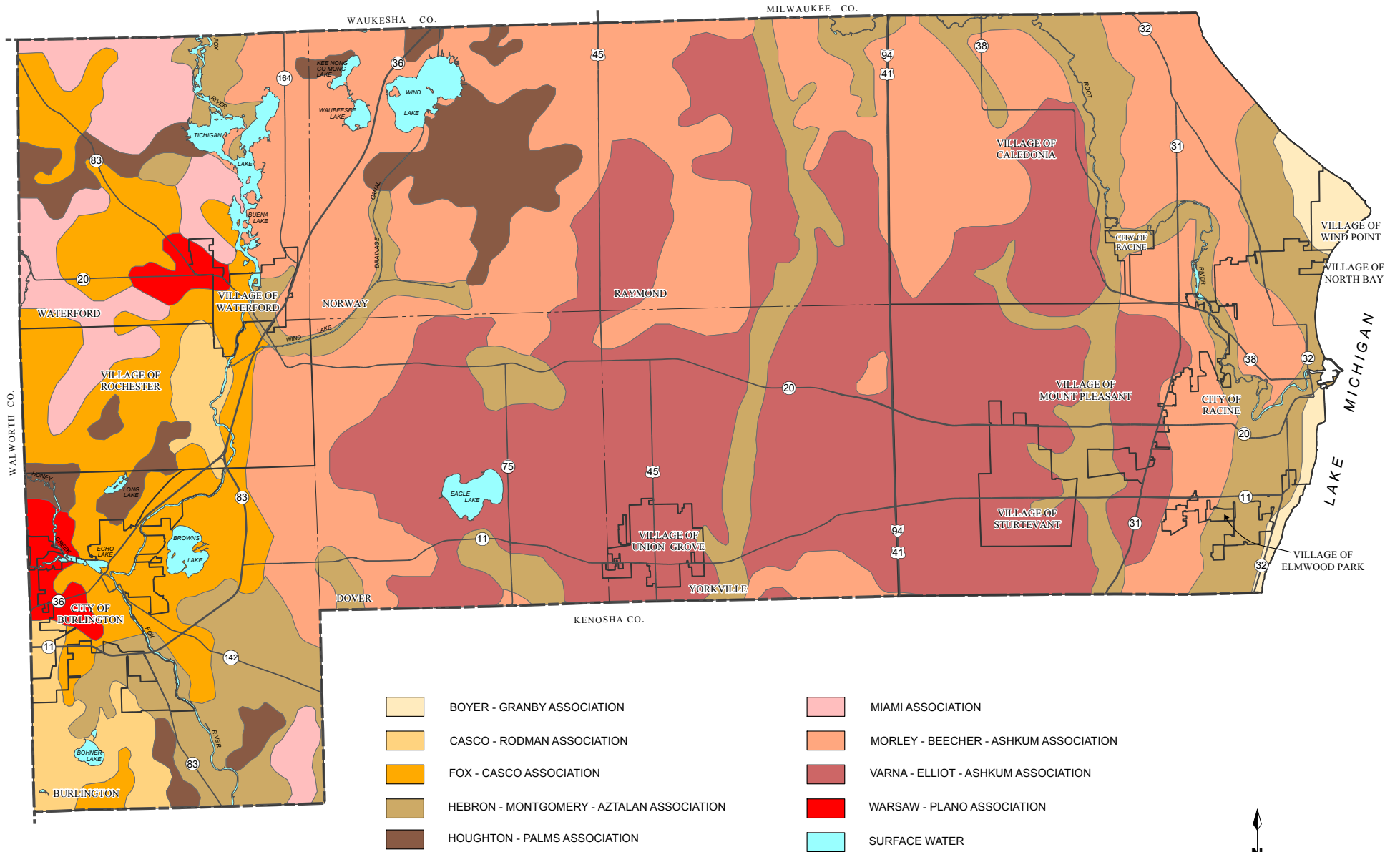


Source: USDA - Natural Resources Conservation Service and SEWRPC.

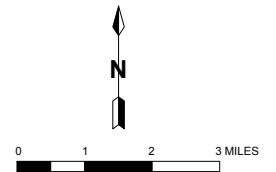


Map 2

GENERAL SOIL ASSOCIATIONS IN RACINE COUNTY

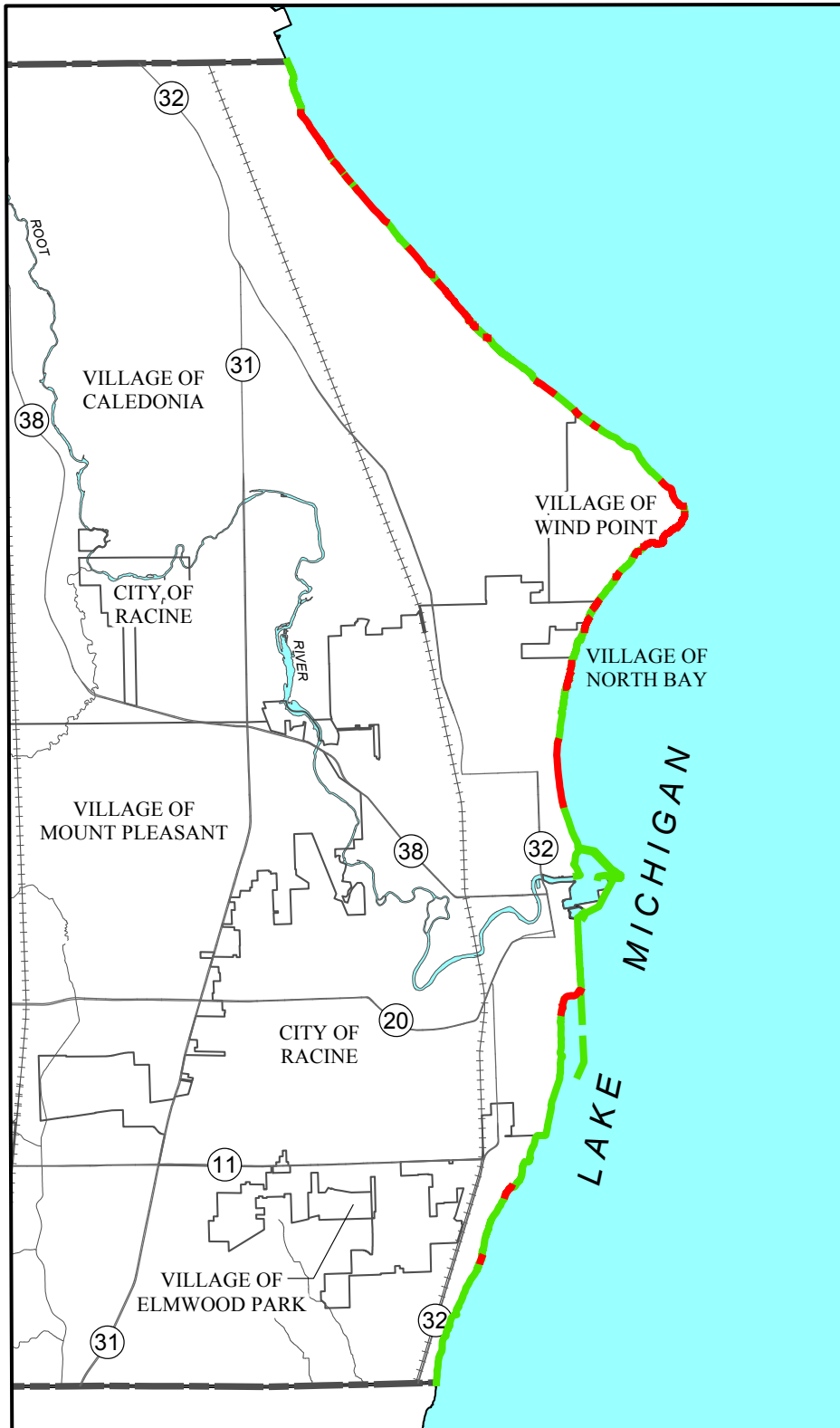




Source: USDA - Natural Resources Conservation Service and SEWRPC.



Map 3

LAKE MICHIGAN SHORELINE / EROSION PROTECTION IN RACINE COUNTY: 2015



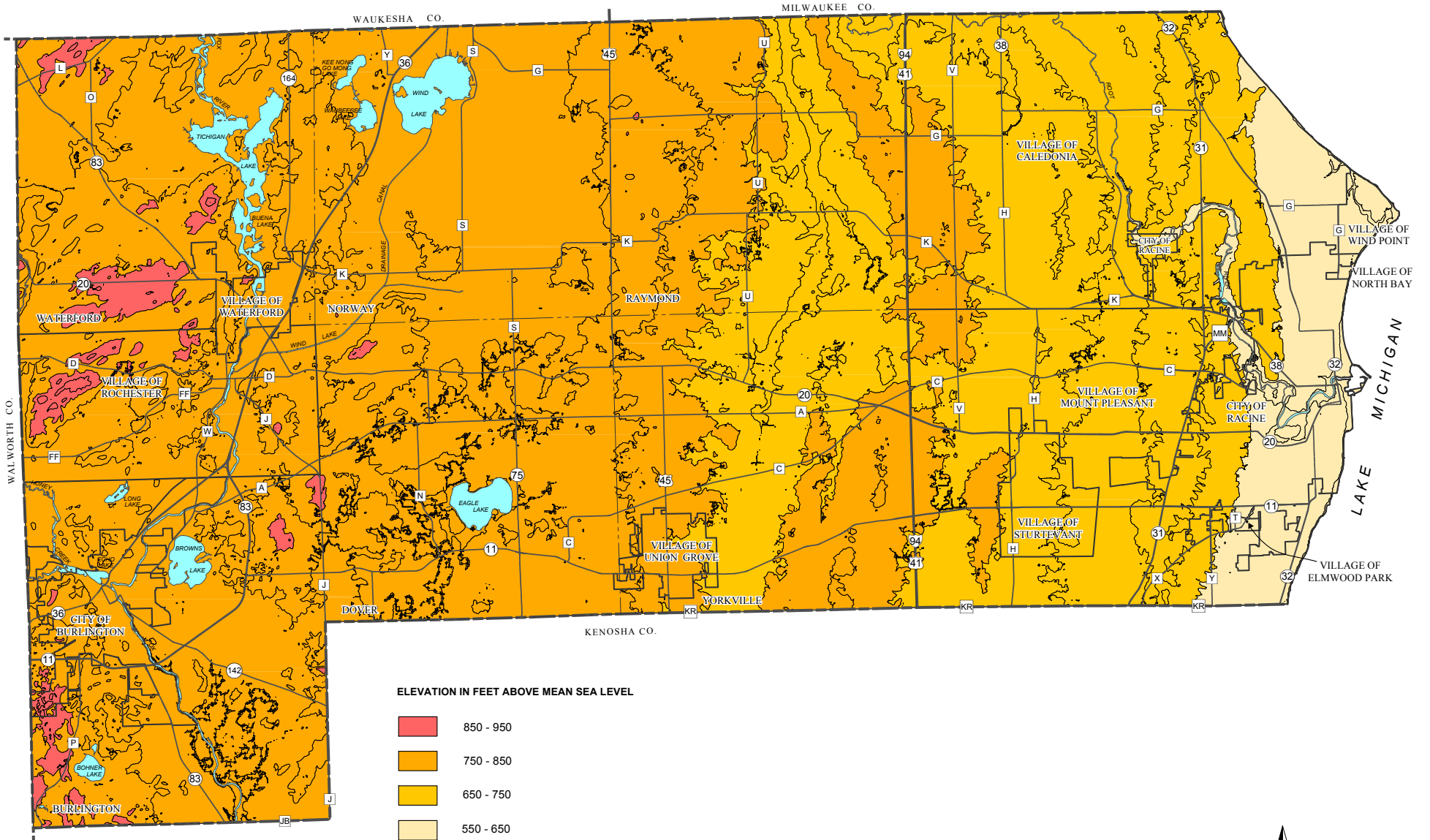
-  PROTECTED SHORELINE
-  UNPROTECTED SHORELINE

Source: S.D. Mackey, Habitat Solutions, and SEWRPC.

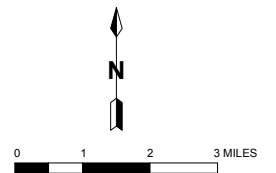


Map 4

GENERALIZED TOPOGRAPHIC CHARACTERISTICS IN RACINE COUNTY

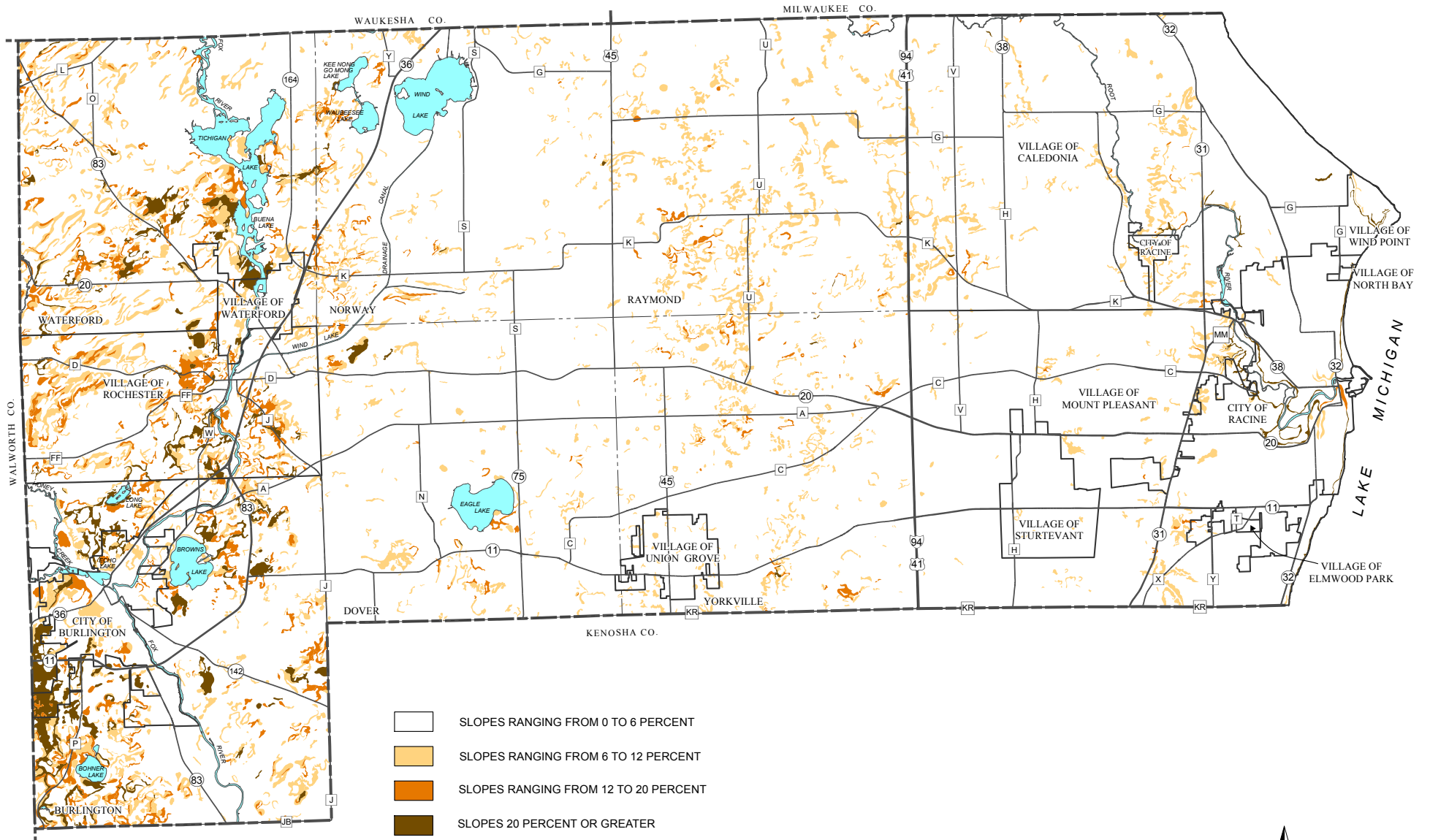


Source: U.S. Geological Survey and SEWRPC.

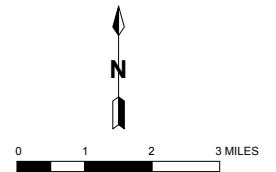


Map 5

SLOPE ANALYSIS FOR RACINE COUNTY

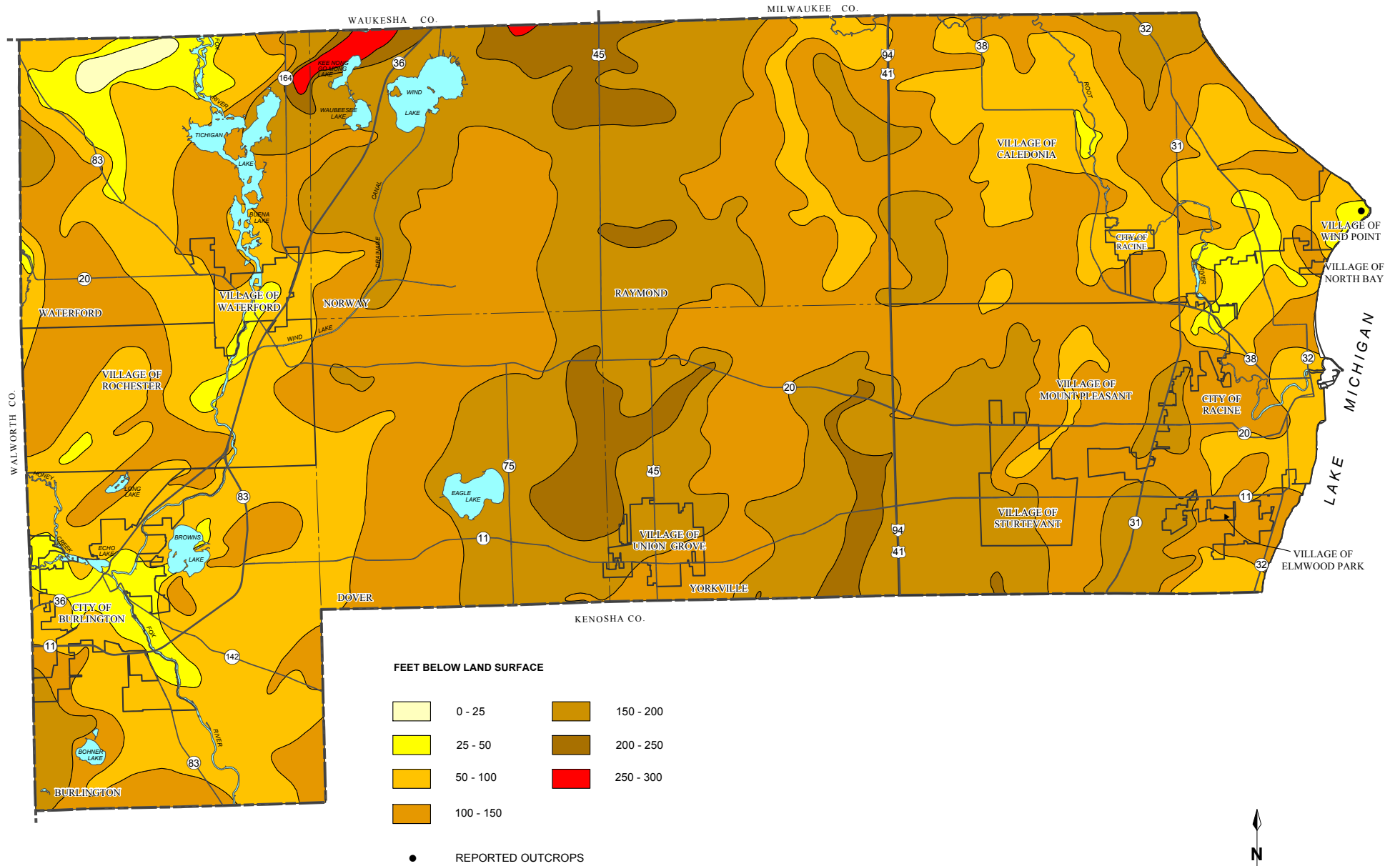


Source: USDA - Natural Resources Conservation Service and SEWRPC.

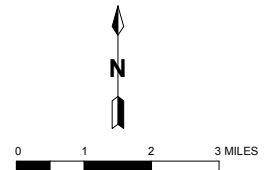


Map 6

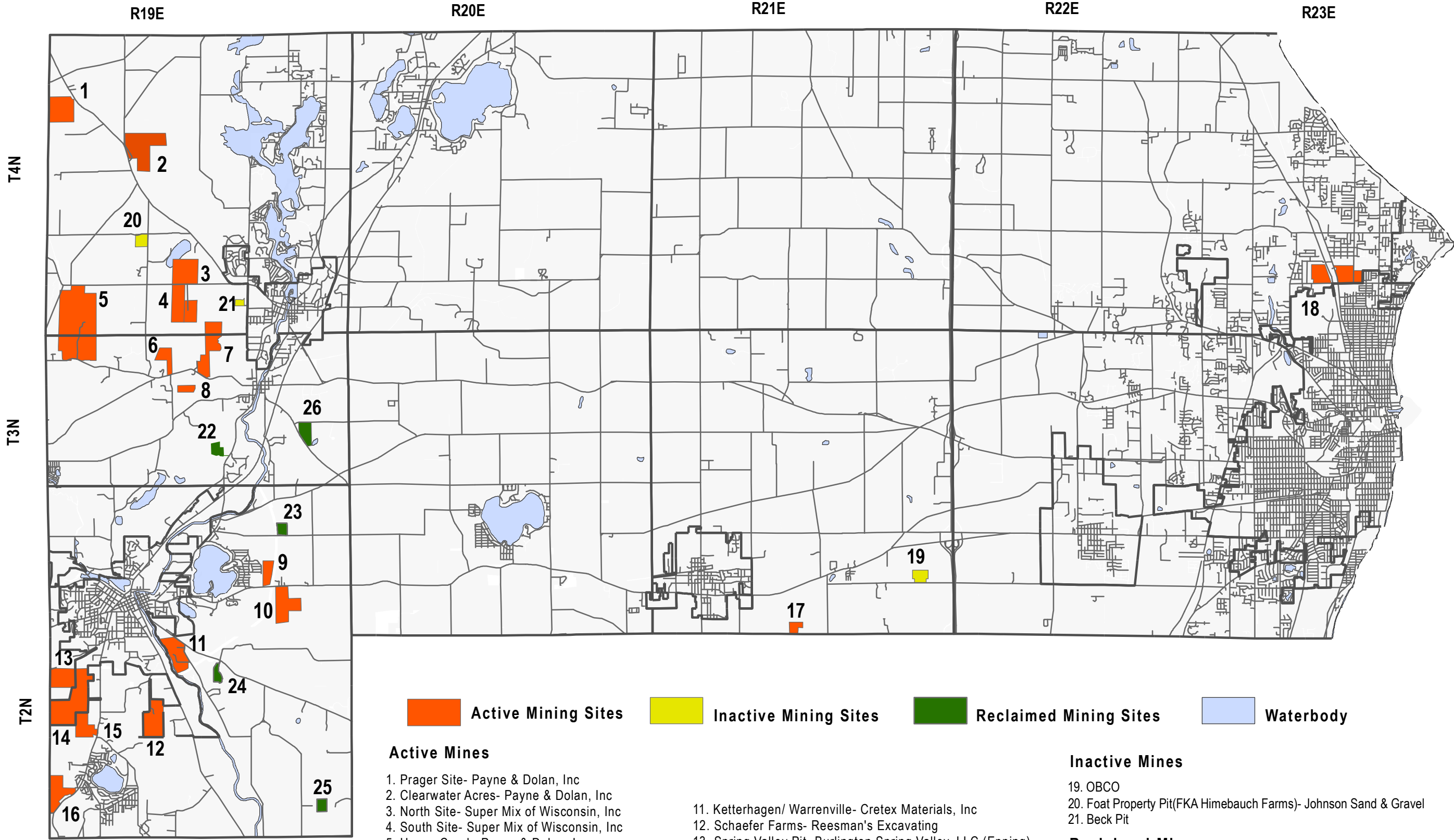
GENERALIZED DEPTH TO BEDROCK IN RACINE COUNTY



Source: University of Wisconsin - Extension, Wisconsin Geological and Natural History Survey, and SEWRPC.



Non-Metallic Mining Sites



Active Mining Sites
 Inactive Mining Sites
 Reclaimed Mining Sites
 Waterbody

Active Mines

1. Prager Site- Payne & Dolan, Inc
2. Clearwater Acres- Payne & Dolan, Inc
3. North Site- Super Mix of Wisconsin, Inc
4. South Site- Super Mix of Wisconsin, Inc
5. Honey Creek- Payne & Dolan, Inc
6. Oakes & Jung, LLC
7. Park View Sand & Gravel, LLC (Epping; Operator)
8. Frost Pit- Racine County
9. Wanasek Corporation
10. Pine Lake Materials-Trenton Ventures (Epping)

11. Ketterhagen/ Warrenville- Cretex Materials, Inc
12. Schaefer Farms- Reesman's Excavating
13. Spring Valley Pit- Burlington Spring Valley, LLC (Epping)
14. Cerami/Nine-T- Cretex materials, Inc
15. Hillside Aggregates- TTT Real Estate, LLC (Epping)
16. Baumeister Pit- Reesman's Excavating
17. Willkomm- Nick Willkomm
18. Racine Quarry- Payne & Dolan, Inc

Inactive Mines

19. OBCO
20. Foat Property Pit(FKA Himebauch Farms)- Johnson Sand & Gravel
21. Beck Pit

Reclaimed Mines

22. Buss & Kramer- Payne & Dolan, Inc
23. Coleman Pit- Thomas E. Coleman
24. Stipe Pit- JW Peters & Sons
25. Cramer Pit- B.R. Amon
26. Kruger Pit- Reesman' Excavating

N

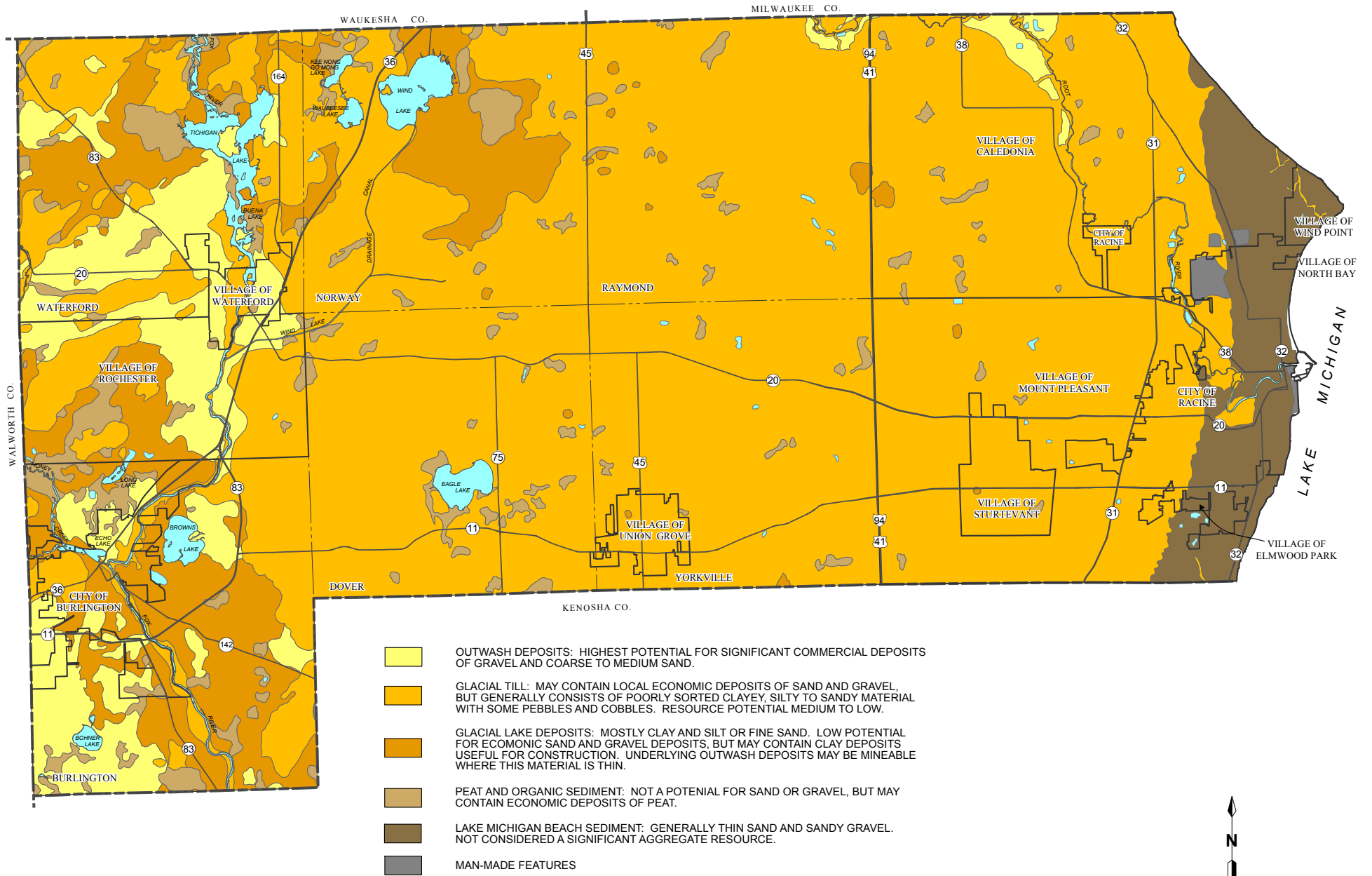


1 inch = 2 miles

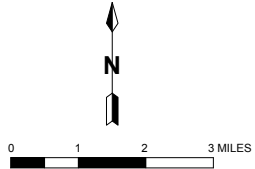
Map by SMR
Revised July 29, 2019
Racine County Development Services

Map 8

POTENTIAL SOURCES OF SAND, GRAVEL, CLAY, AND PEAT IN RACINE COUNTY

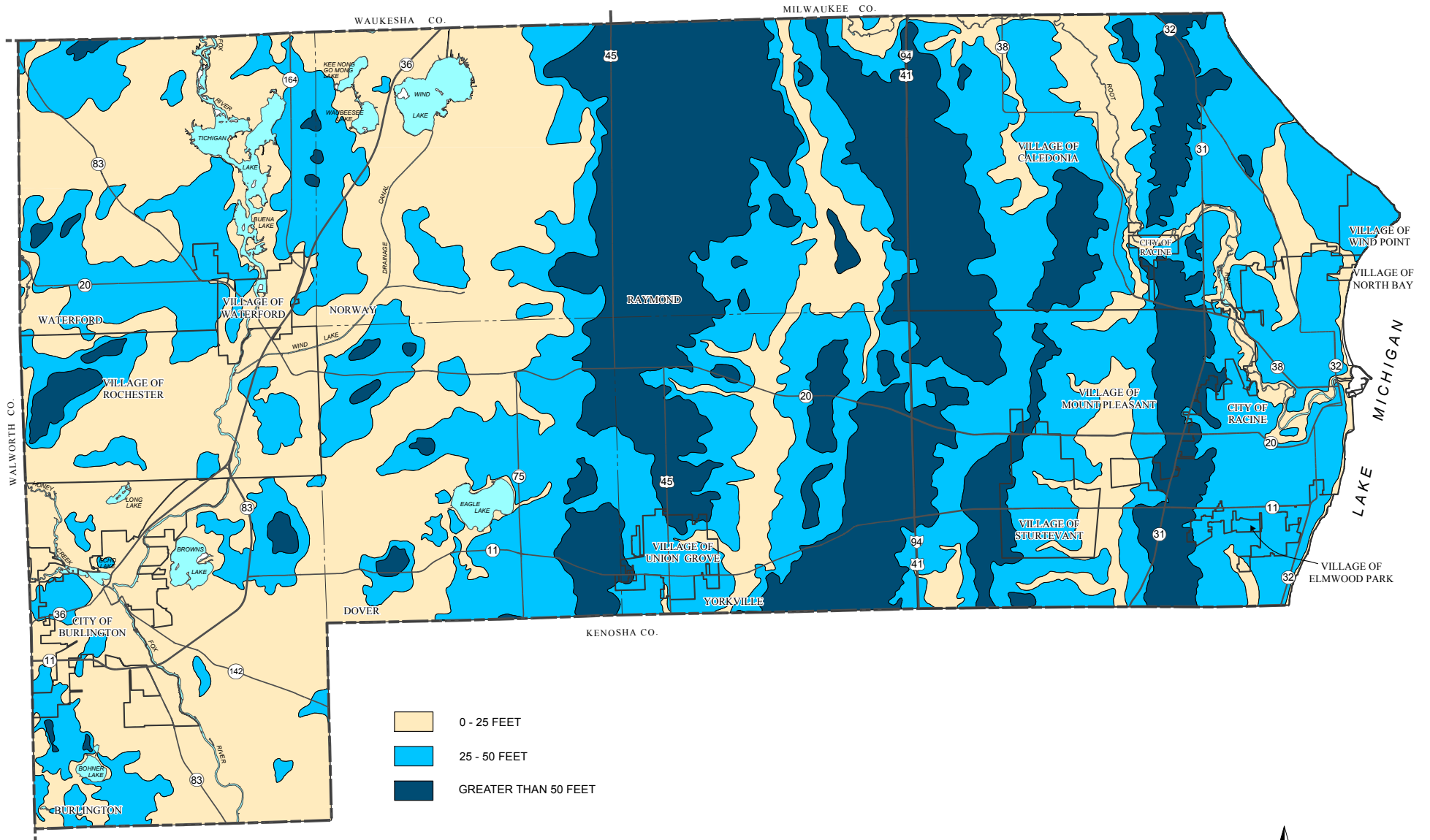


Source: Wisconsin Geological and Natural History Survey and SEWRPC.

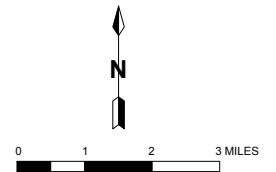


Map 9

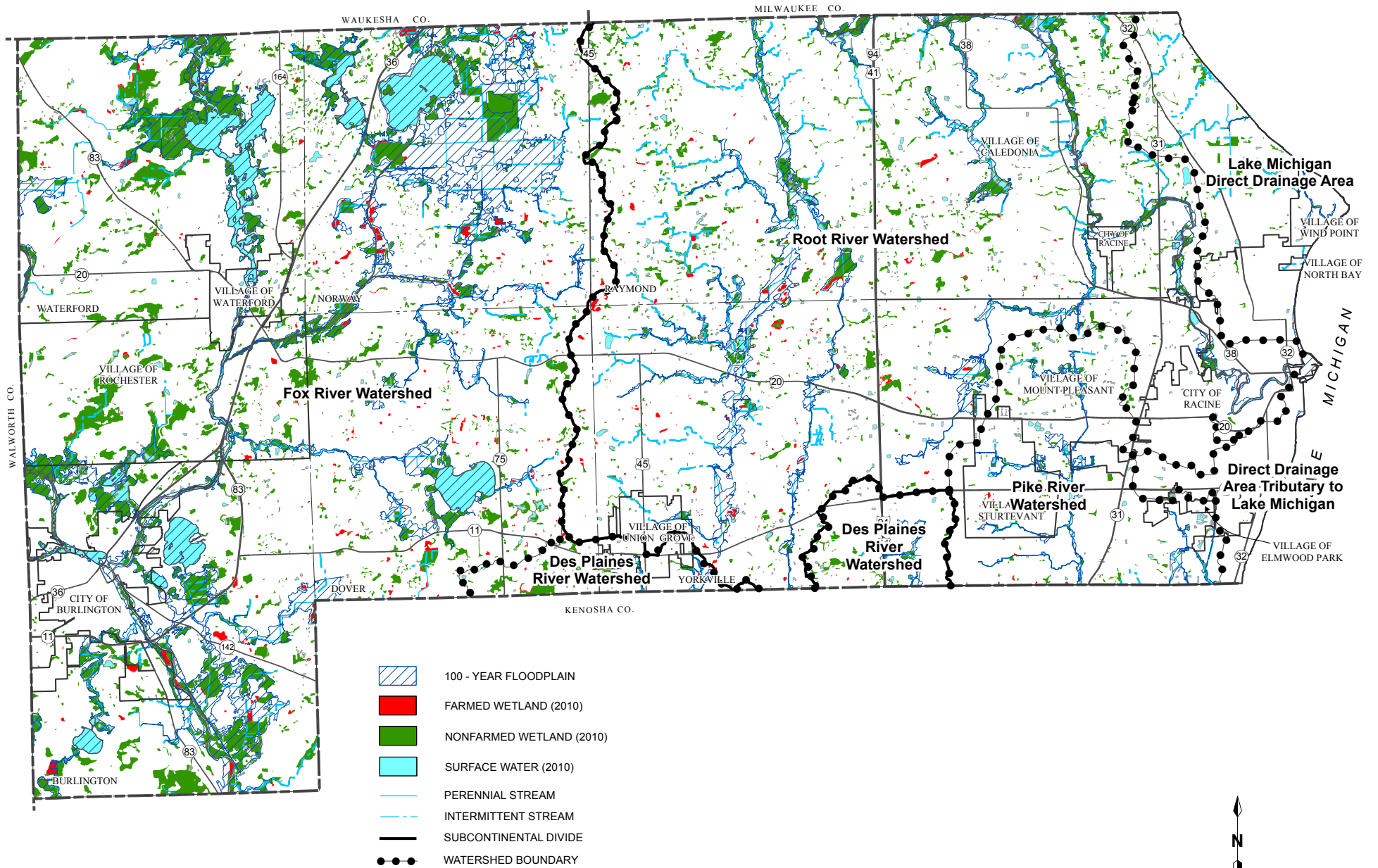
DEPTH TO SEASONAL HIGH GROUNDWATER TABLE IN RACINE COUNTY



Source: Wisconsin Geological and Natural History Survey and SEWRPC.



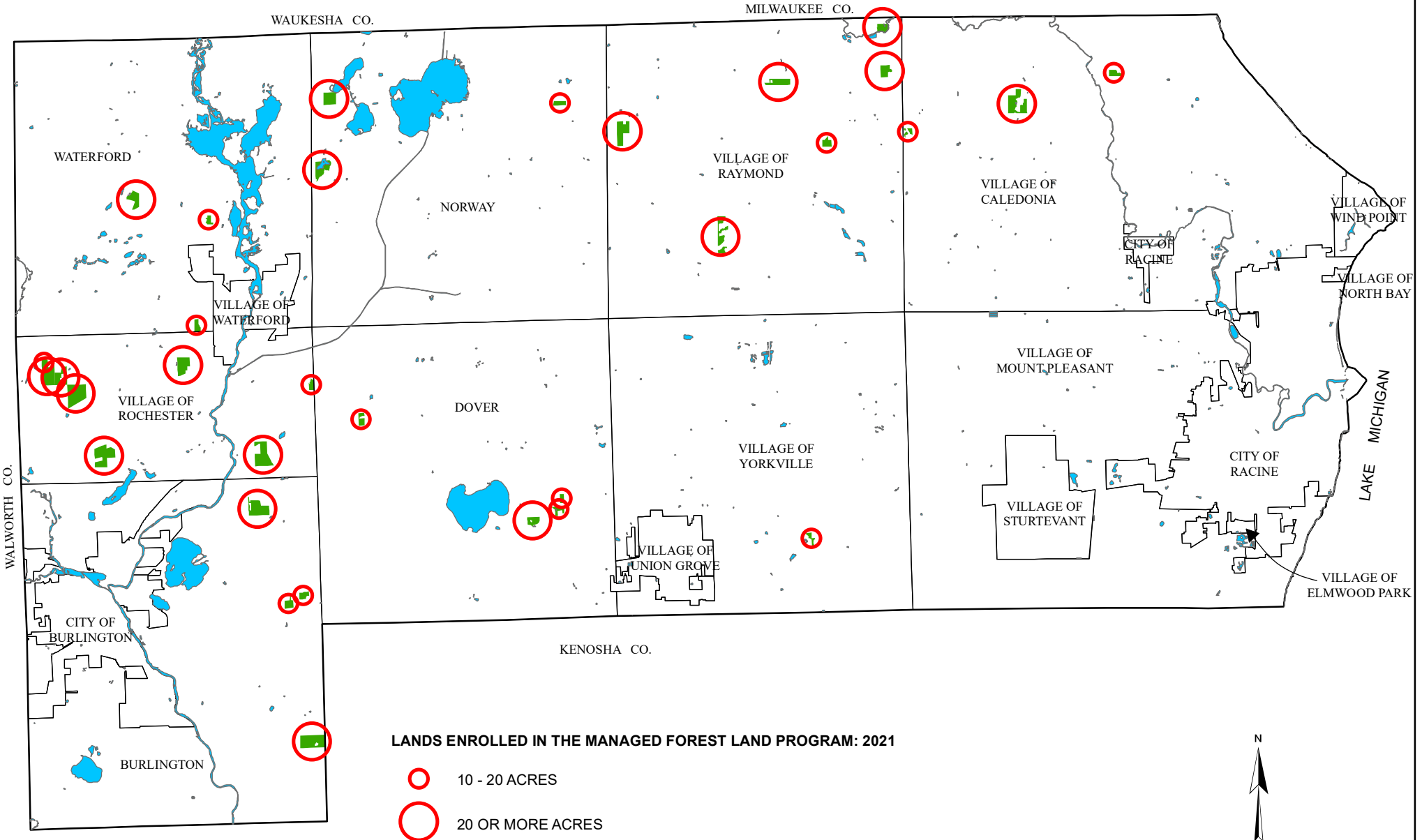
SURFACE WATERS, WETLANDS, AND FLOODPLAINS IN RACINE COUNTY





Source: Wisconsin Department of Natural Resources and SEWRPC.

Map 11

MANAGED FOREST LANDS IN RACINE COUNTY



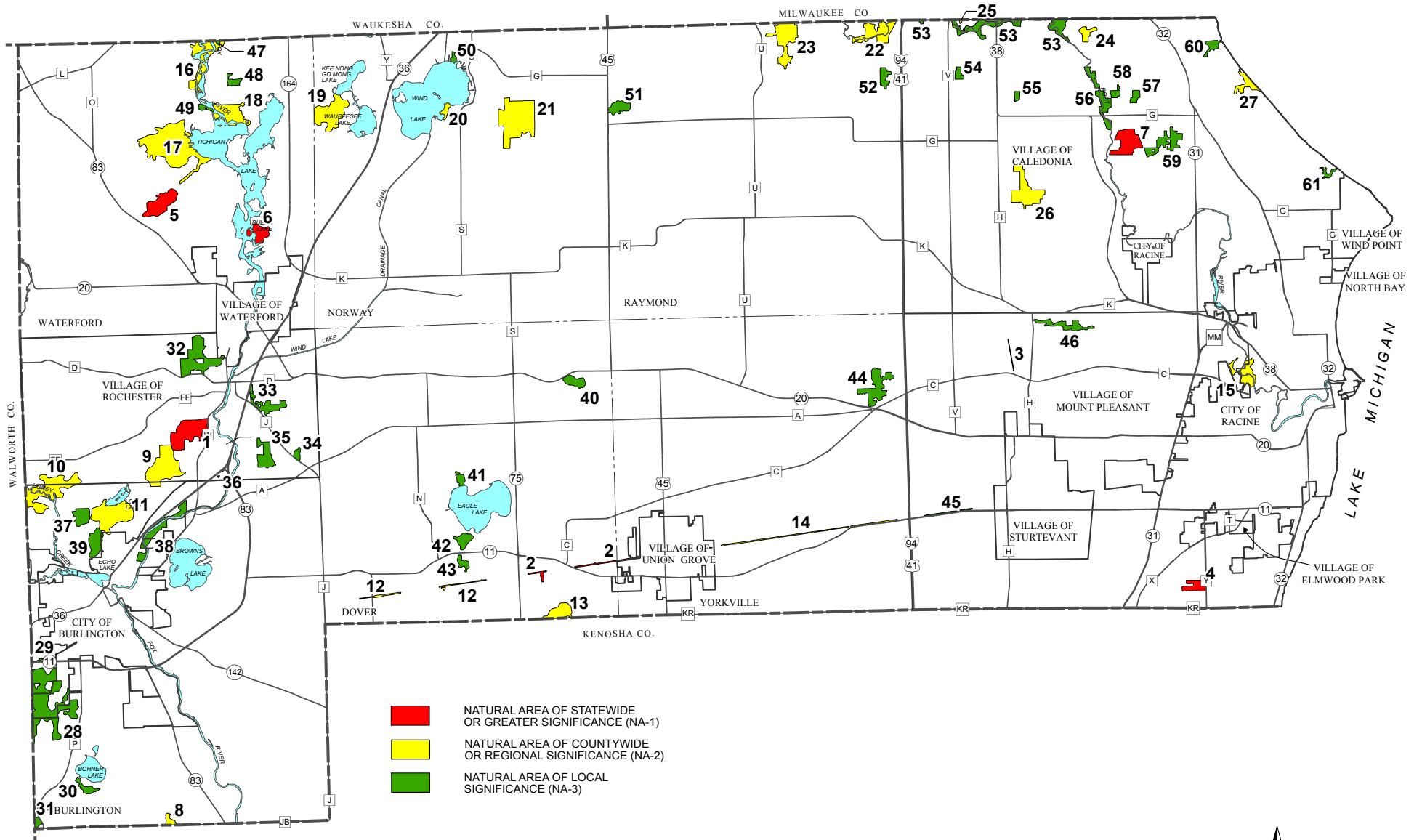
LANDS ENROLLED IN THE MANAGED FOREST LAND PROGRAM: 2021

-  10 - 20 ACRES
-  20 OR MORE ACRES

SOURCE: WISCONSIN DEPARTMENT OF NATURAL RESOURCES

Map 12

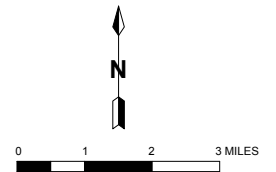
NATURAL AREAS IN RACINE COUNTY: 2009



- NATURAL AREA OF STATEWIDE OR GREATER SIGNIFICANCE (NA-1)
- NATURAL AREA OF COUNTYWIDE OR REGIONAL SIGNIFICANCE (NA-2)
- NATURAL AREA OF LOCAL SIGNIFICANCE (NA-3)

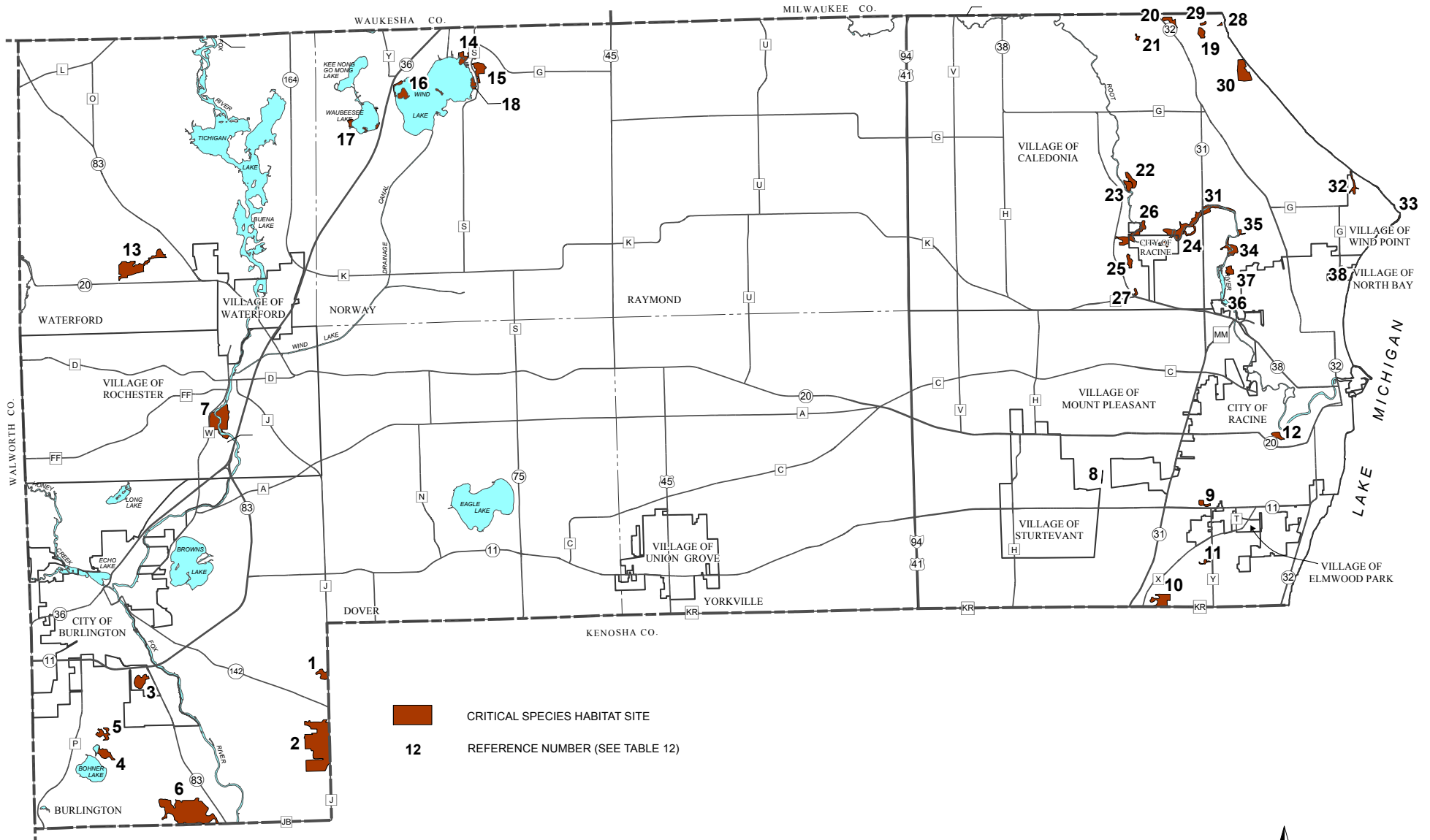
33 REFERENCE NUMBER (SEE TABLE 11)

Source: SEWRPC.



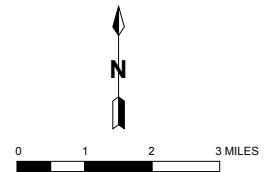
Map 13

CRITICAL SPECIES HABITAT SITES IN RACINE COUNTY: 2009



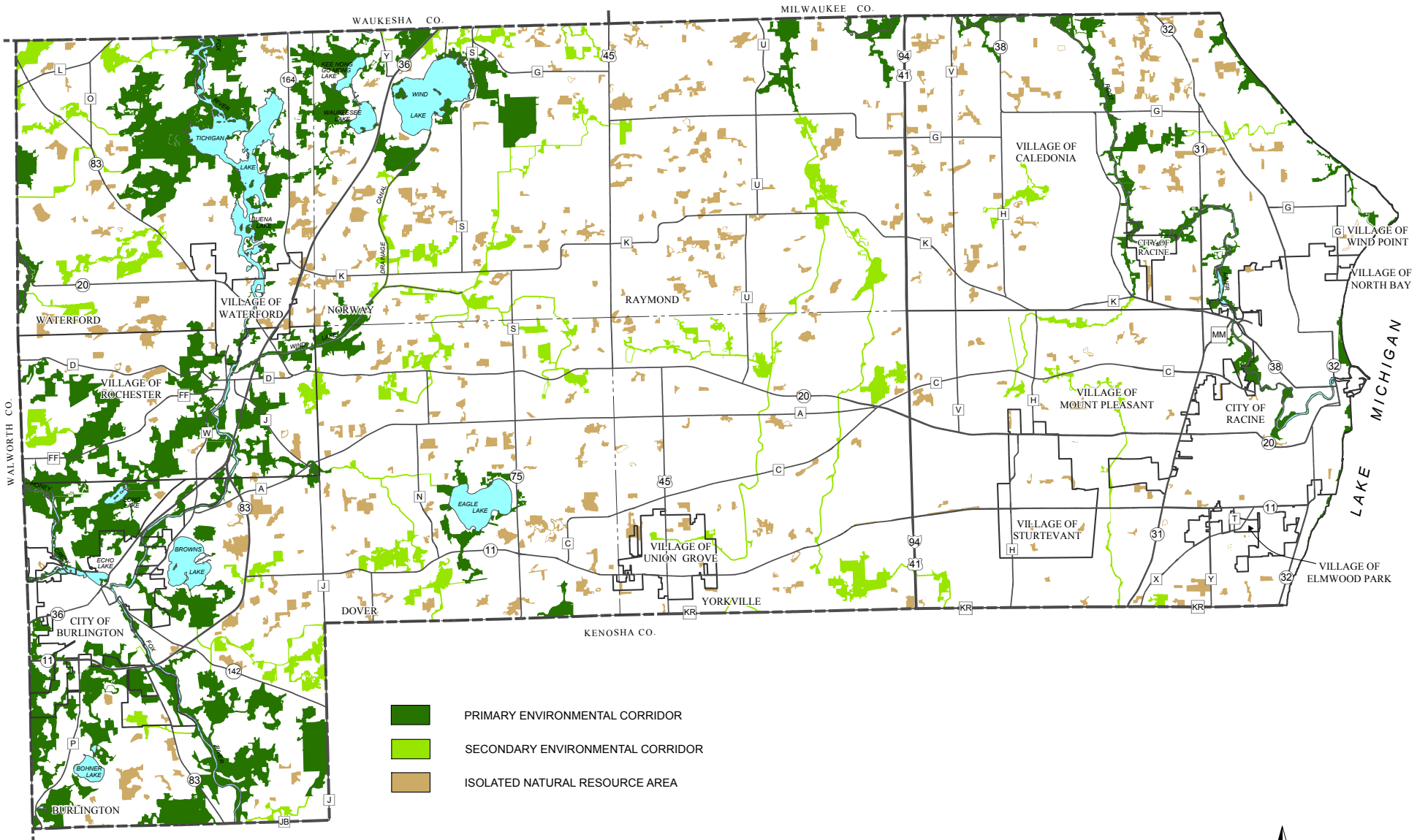
- CRITICAL SPECIES HABITAT SITE
- 12** REFERENCE NUMBER (SEE TABLE 12)

Source: SEWRPC.

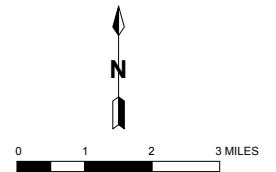


Map 14

ENVIRONMENTAL CORRIDORS AND ISOLATED NATURAL RESOURCE AREAS IN RACINE COUNTY: 2010

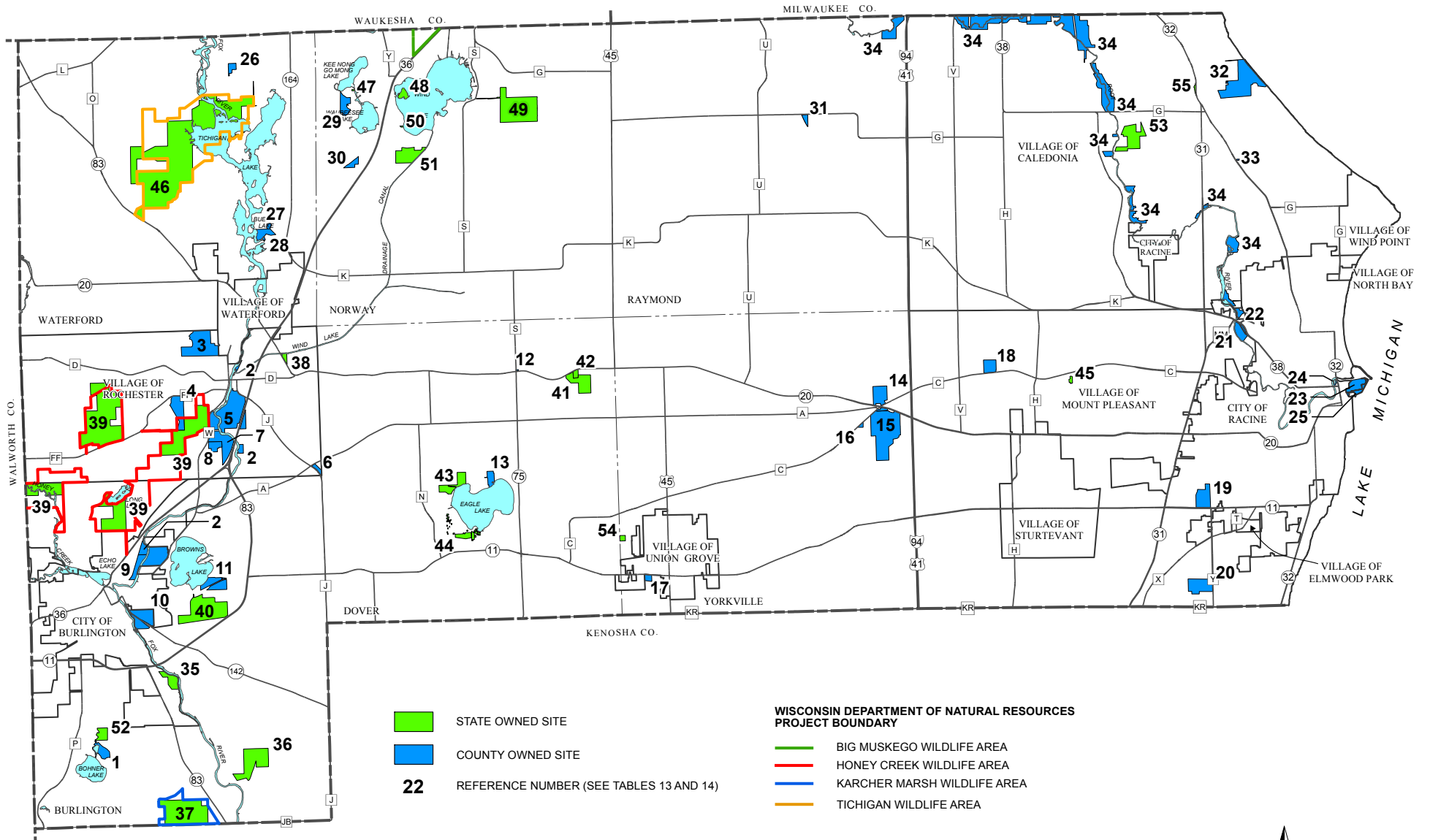


Source: SEWRPC.

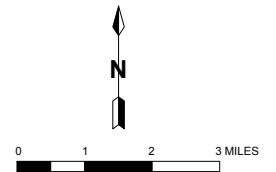


Map 15

RACINE COUNTY AND STATE OF WISCONSIN PARK AND OPEN SPACE SITES: 2010



Source: Wisconsin Department of Natural Resources, Racine County, and SEWRPC.





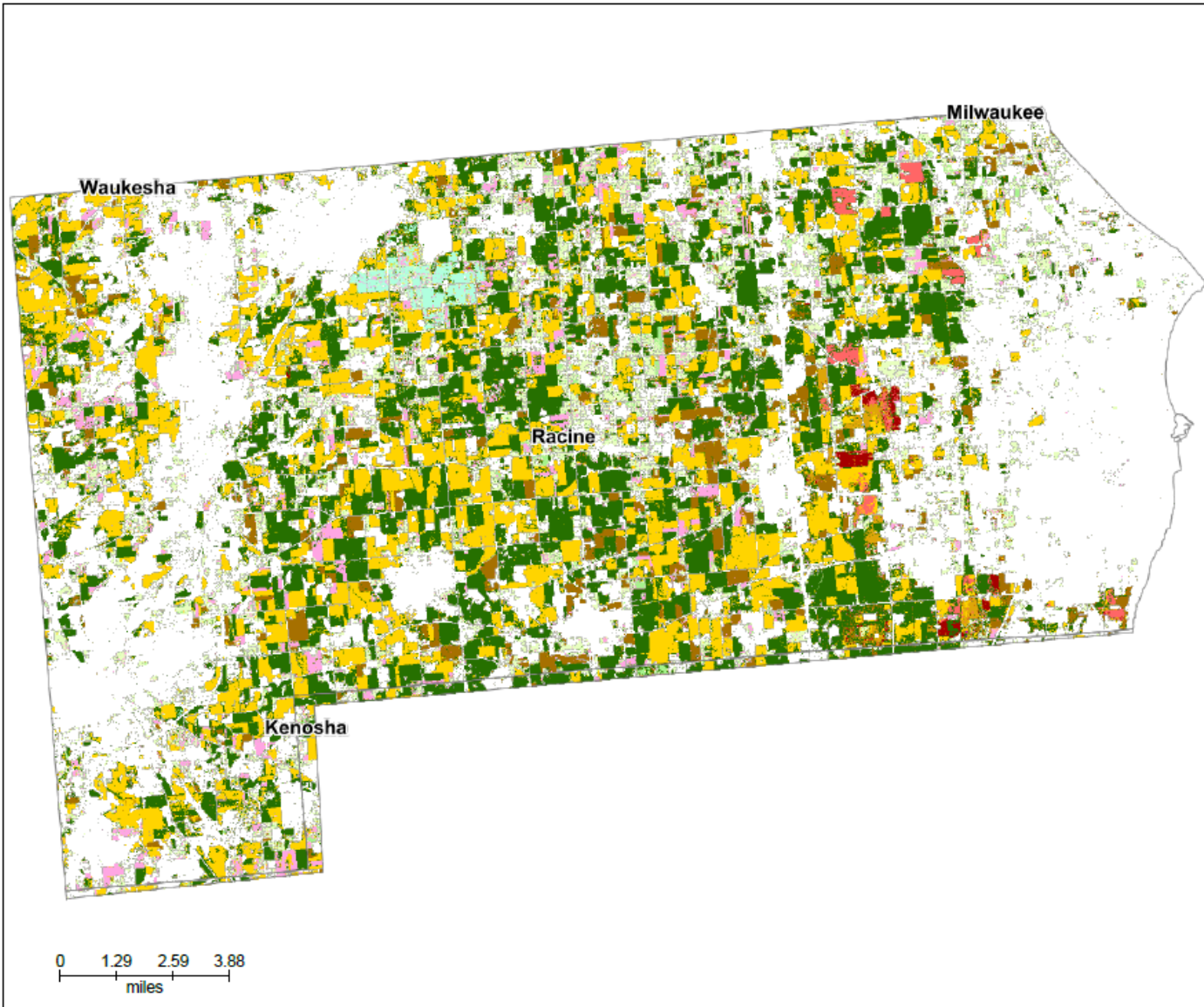
Map 16 CDL2021 CDL, Racine County, Wisconsin



Land Cover Categories
(by decreasing acreage)

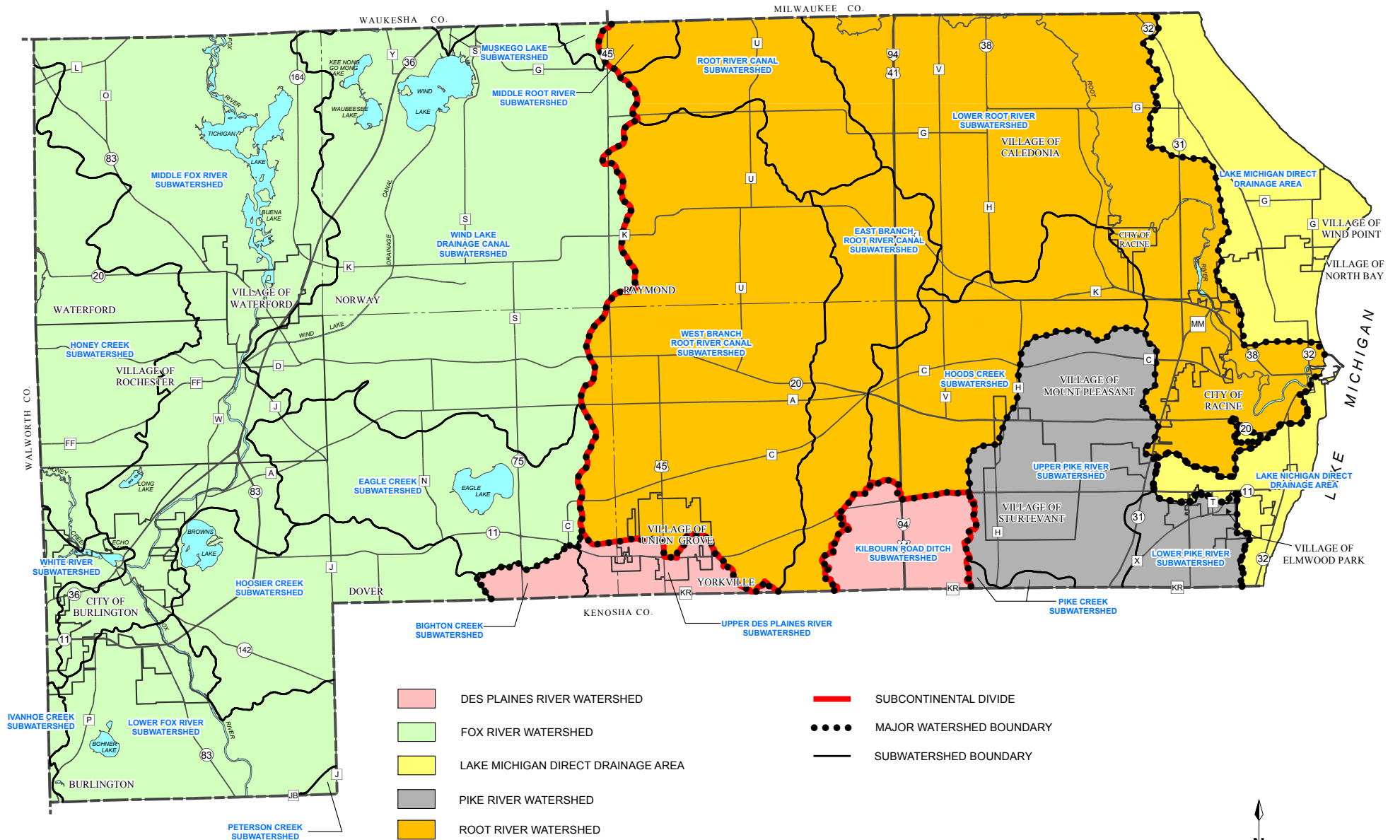
AGRICULTURE*

-  Soybeans
-  Corn
-  Grass/Pasture
-  Winter Wheat
-  Alfalfa
-  Other Hay/Non Alfalfa
-  Sod/Grass Seed
-  Cabbage
-  Sweet Corn
-  Dry Beans
-  Greens
-  Pumpkins
-  Oats
-  Fallow/Idle Cropland
-  Rye
-  Dbl Crop WinWht/Soybeans

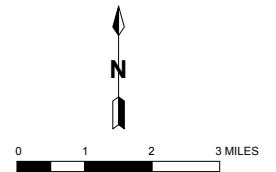


Map 17

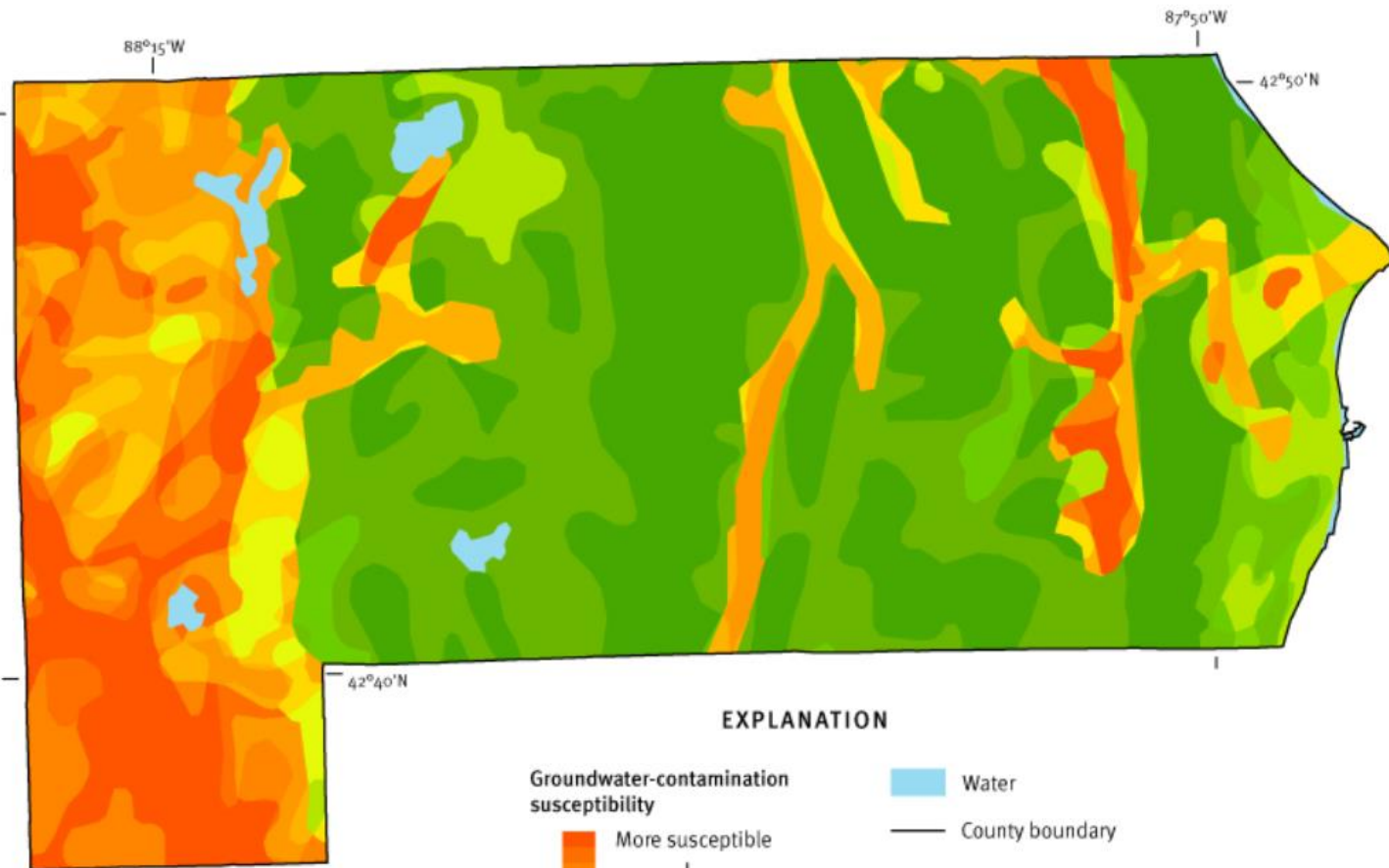
WATERSHED FEATURES IN RACINE COUNTY



Source: SEWRPC.

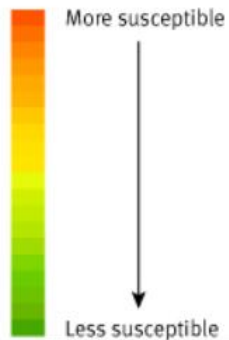


Map 18
Racine County – Groundwater-Contamination
Susceptibility Analysis



EXPLANATION

Groundwater-contamination
susceptibility



Water

County boundary

