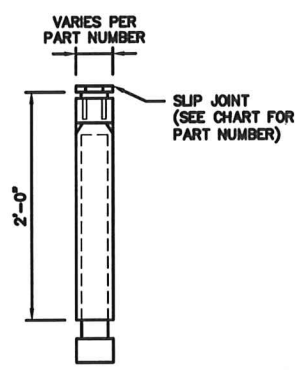
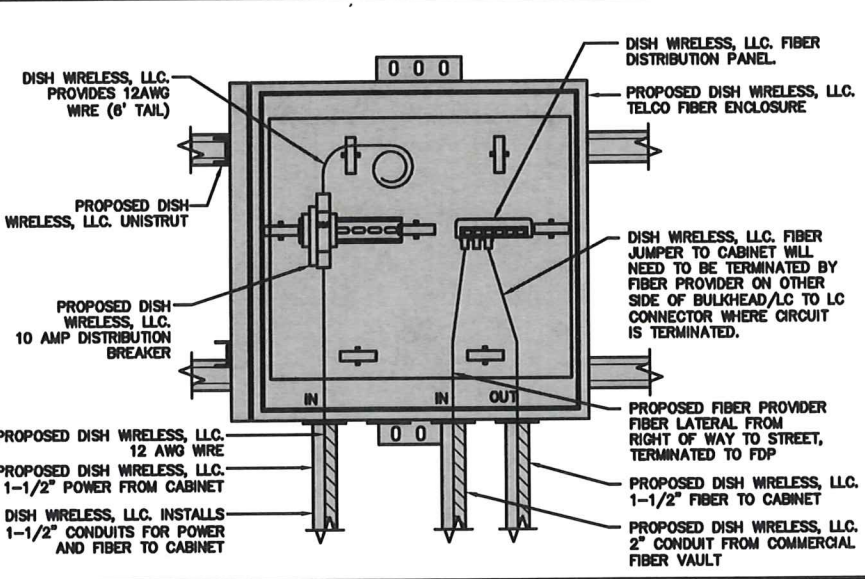
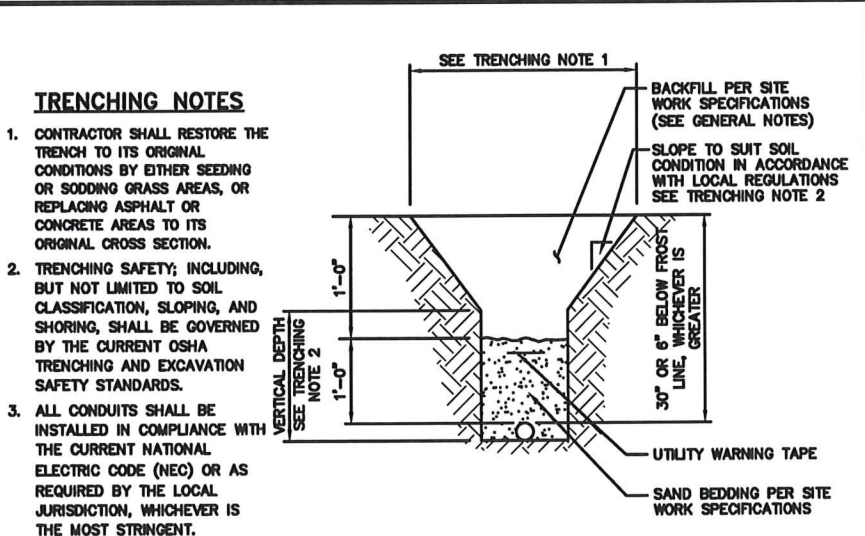


**CARLON EXPANSION FITTINGS**

COUPLING END PART#	MALE TERMINAL ADAPTER END PART#	SIZE	STD CTN. QTY.	TRAVEL LENGTH
E945D	E945DX	1/2"	20	4"
E945E	E945EX	3/4"	15	4"
E945F	E945FX	1"	10	4"
E945G	E945GX	1 1/4"	5	4"
E945H	E945HX	1 1/2"	5	4"
E945J	E945JX	2"	15	8"
E945K	E945KX	2 1/2"	10	8"
E945L	E945LX	3"	10	8"
E945M	E945MX	3 1/2"	5	8"
E945N	E945NX	4"	5	8"
E945P	E945PX	5"	1	8"
E945R	E945RX	6"	1	8"



NOTE: CONTRACTOR TO INSTALL EXPANSION FITTING SLIP JOINT AT METER CENTER CONDUIT TERMINATION, AS PER LOCAL UTILITY POLICY, ORDINANCE AND/OR SPECIFIED REQUIREMENT.



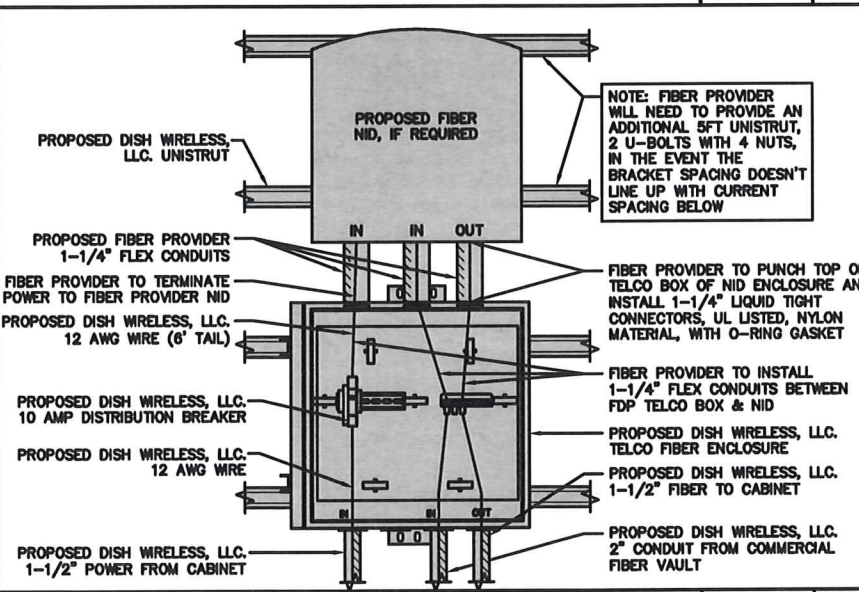
**dish wireless.**

5701 SOUTH SANTA FE DRIVE  
LITTLETON, CO 80120

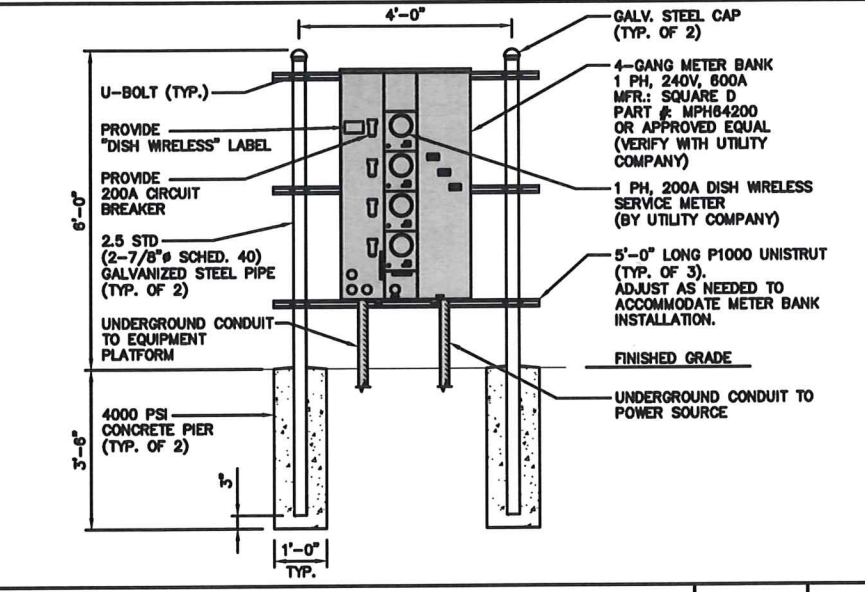
**FULLERTON**

1100 E. WOODFIELD ROAD, SUITE 500  
SCHAUMBURG, ILLINOIS 60173  
TEL: 847-908-8400  
COA# 3620-11  
www.FullertonEngineering.com

**EXPANSION JOINT DETAIL** NO SCALE 1



**TYPICAL UNDERGROUND TRENCH DETAIL** NO SCALE 2



**DARK TELCO BOX - INTERIOR WIRING LAYOUT** NO SCALE 3

WISCONSIN PROFESSIONAL ENGINEER

DANIEL W. SMITH  
44096-6  
SCHAUMBURG, IL

IT IS A VIOLATION OF LAW FOR ANY PERSON, UNLESS THEY ARE ACTING UNDER THE DIRECTION OF A LICENSED PROFESSIONAL ENGINEER, TO ALTER THIS DOCUMENT.

DRAWN BY: MS CHECKED BY: DZ APPROVED BY: DS

RFDS REV #: 2

**PERMITTING DOCUMENTS**

SUBMITTALS

REV	DATE	DESCRIPTION
A	08/20/2021	ISSUED FOR REVIEW
B	09/18/2021	REVISION
C	03/10/2022	MOUNT REVISION
O	03/14/2022	ISSUED FOR PERMITTING

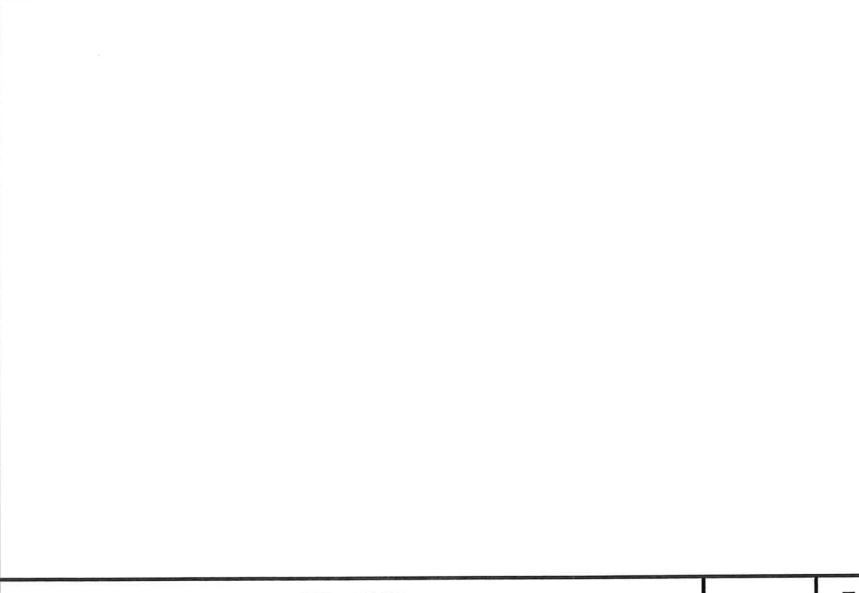
A&E PROJECT NUMBER  
2021.0030.0075

DISH WIRELESS, LLC.  
PROJECT INFORMATION  
MWMKE00224A  
8330 N RAYNOR AVE  
FRANKSVILLE, WI 53126

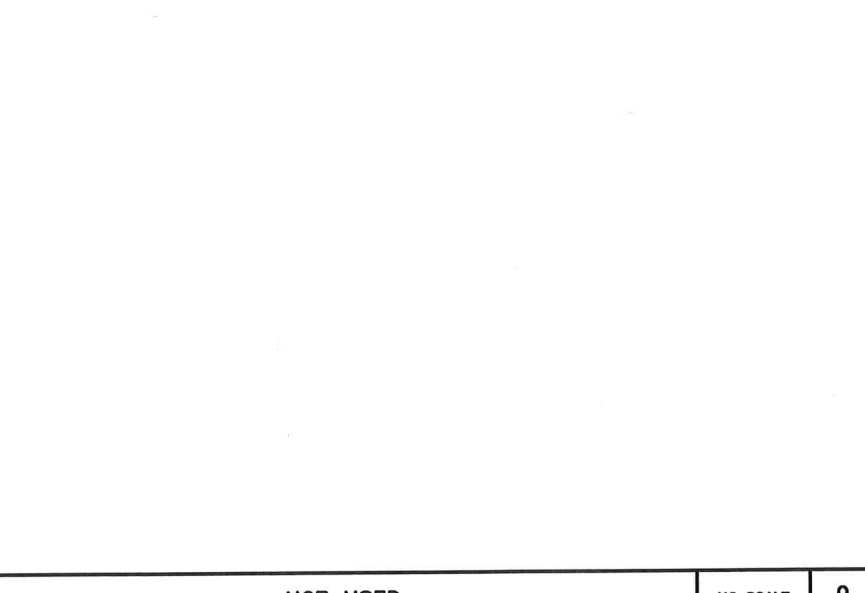
SHEET TITLE  
ELECTRICAL  
DETAILS

SHEET NUMBER  
**E-2**

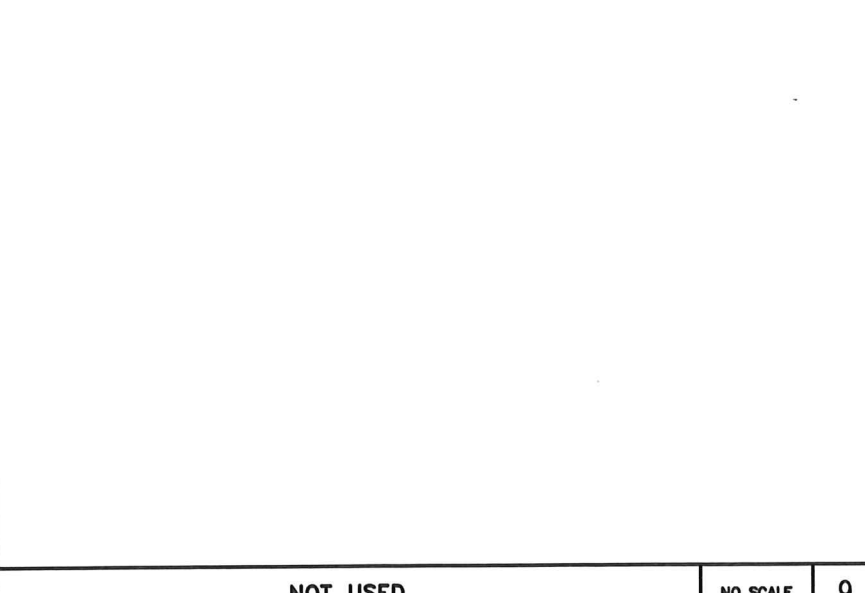
**LIT TELCO BOX - INTERIOR WIRING LAYOUT (OPTIONAL)** NO SCALE 4



**UTILITY H-FRAME DETAIL** NO SCALE 5



**NOT USED** NO SCALE 6



**NOT USED** NO SCALE 7

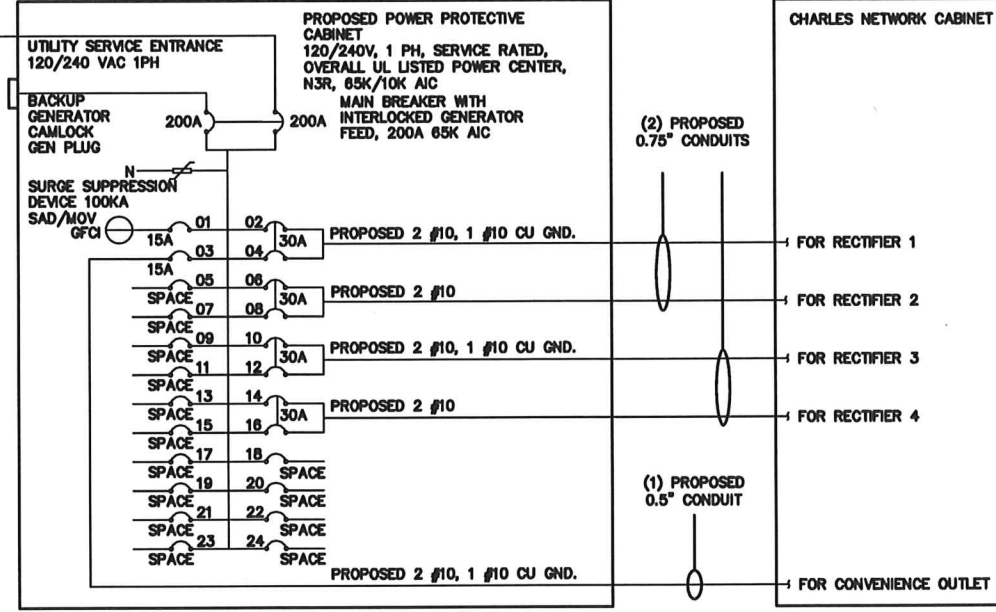
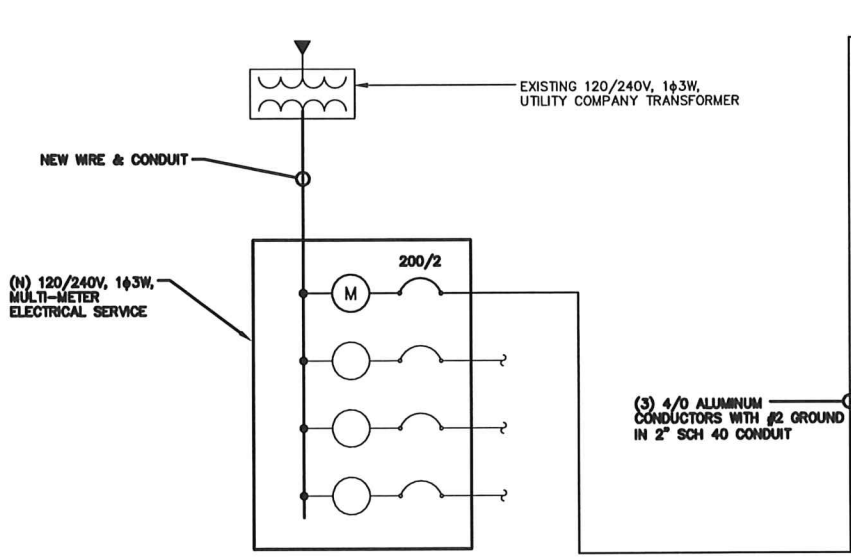


**NOT USED** NO SCALE 8



**NOT USED** NO SCALE 9





**NOTE:**  
BRANCH CIRCUIT WIRING SUPPLYING RECTIFIERS ARE TO BE RATED UL1015, 105°C, 600V, AND PVC INSULATED, IN THE SIZES SHOWN IN THE ONE-LINE DIAGRAM. CONTRACTOR MAY SUBSTITUTE UL1015 WIRE FOR THWN-2 FOR CONVENIENCE OUTLET BRANCH CIRCUIT.

**BREAKERS REQUIRED:**  
(4) 30A, 2P BREAKER - SQUARE D P/N: Q0230  
(1) 15A, 1P BREAKER - SQUARE D P/N: Q0115

**NOTE**  
EXACT LOCATION OF POWER SOURCE AND CONDUIT ROUTE AND SPECIFICATIONS TO BE DETERMINED UPON POWER COORDINATION COMPLETION.

**NOTES**

THE ENGINEER OF RECORD HAS PERFORMED ALL REQUIRED SHORT CIRCUIT CALCULATIONS AND THE AIC RATINGS FOR EACH DEVICE IS ADEQUATE TO PROTECT THE EQUIPMENT AND THE ELECTRICAL SYSTEM.

THE ENGINEER OF RECORD HAS PERFORMED ALL REQUIRED VOLTAGE DROP CALCULATIONS AND ALL BRANCH CIRCUIT AND FEEDERS COMPLY WITH THE NEC (LISTED ON T-1) ARTICLE 210.19(A)(1) FPN NO. 4.

THE (2) CONDUITS WITH (4) CURRENT CARRYING CONDUCTORS EACH, SHALL APPLY THE ADJUSTMENT FACTOR OF 80% PER 2014/17 NEC TABLE 310.15(B)(3)(a) OR 2020 NEC TABLE 310.15(C)(1) FOR UL1015 WIRE.

#12 FOR 15A-20A/1P BREAKER: 0.8 x 30A = 24.0A  
#10 FOR 25A-30A/2P BREAKER: 0.8 x 40A = 32.0A  
#8 FOR 35A-40A/2P BREAKER: 0.8 x 55A = 44.0A  
#6 FOR 45A-60A/2P BREAKER: 0.8 x 75A = 60.0A

CONDUIT SIZING: AT 40% FILL PER NEC CHAPTER 9, TABLE 4, ARTICLE 358.  
0.5" CONDUIT - 0.122 SQ. IN AREA  
0.75" CONDUIT - 0.213 SQ. IN AREA  
2.0" CONDUIT - 1.316 SQ. IN AREA  
3.0" CONDUIT - 2.907 SQ. IN AREA

CABINET CONVENIENCE OUTLET CONDUCTORS (1 CONDUIT): USING THWN-2, CU.

#10 - 0.0211 SQ. IN X 2 = 0.0422 SQ. IN  
#10 - 0.0211 SQ. IN X 1 = 0.0211 SQ. IN <GROUND  
TOTAL = 0.0633 SQ. IN

0.5" CONDUIT IS ADEQUATE TO HANDLE THE TOTAL OF (3) WIRES, INCLUDING GROUND WIRE, AS INDICATED ABOVE.

RECTIFIER CONDUCTORS (2 CONDUITS): USING UL1015, CU.

#10 - 0.0266 SQ. IN X 4 = 0.1064 SQ. IN  
#10 - 0.0082 SQ. IN X 1 = 0.0082 SQ. IN <BARE GROUND  
TOTAL = 0.1146 SQ. IN

0.75" CONDUIT IS ADEQUATE TO HANDLE THE TOTAL OF (5) WIRES, INCLUDING GROUND WIRE, AS INDICATED ABOVE.

PPC FEED CONDUCTORS (1 CONDUIT): USING THWN-2, AL.

4/0 - 0.3237 SQ. IN X 3 = 0.9711 SQ. IN  
#2 - 0.1158 SQ. IN X 1 = 0.1158 SQ. IN <GROUND  
TOTAL = 1.0869 SQ. IN

2.0" SCH 40 PVC CONDUIT IS ADEQUATE TO HANDLE THE TOTAL OF (4) WIRES, INCLUDING GROUND WIRE, AS INDICATED ABOVE.

PPC ONE-LINE DIAGRAM

NO SCALE 1

**PROPOSED CHARLES PANEL SCHEDULE**

LOAD SERVED	VOLT AMPS (WATTS)		TRIP	CKT #	PHASE	CKT #	TRIP	VOLT AMPS (WATTS)		LOAD SERVED
	L1	L2						L1	L2	
PPC GFCI OUTLET	180	180	15A	1	A	2	30A	2880	2880	ABB/GE INFINITY RECTIFIER 1
CHARLES GFCI OUTLET	180	180	15A	3	B	4	30A	2880	2880	ABB/GE INFINITY RECTIFIER 2
-SPACE-				5	A	6	30A	2880	2880	ABB/GE INFINITY RECTIFIER 3
-SPACE-				7	B	8	30A	2880	2880	ABB/GE INFINITY RECTIFIER 4
-SPACE-				9	A	10	30A	2880	2880	-SPACE-
-SPACE-				11	B	12	30A	2880	2880	-SPACE-
-SPACE-				13	A	14	30A	2880	2880	-SPACE-
-SPACE-				15	B	16	30A	2880	2880	-SPACE-
-SPACE-				17	A	18				-SPACE-
-SPACE-				19	B	20				-SPACE-
-SPACE-				21	A	22				-SPACE-
-SPACE-				23	B	24				-SPACE-
<b>VOLTAGE AMPS</b>	180	180						11520	11520	
200A MCB, 1ϕ, 24 SPACE, 120/240V				L1	L2			11700	11700	
MB RATING: 65,000 AIC				98	98					
				98	98					
				123	123					

PANEL SCHEDULE

NO SCALE 2

NOT USED

NO SCALE 3



5701 SOUTH SANTA FE DRIVE  
LITTLETON, CO 80120



1100 E. WOODFIELD ROAD, SUITE 500  
SCHAUMBURG, ILLINOIS 60173  
TEL: 847-908-8400  
COA# 3620-11  
www.FullertonEngineering.com



IT IS A VIOLATION OF LAW FOR ANY PERSON, UNLESS THEY ARE ACTING UNDER THE DIRECTION OF A LICENSED PROFESSIONAL ENGINEER, TO ALTER THIS DOCUMENT.

DRAWN BY: MS  
CHECKED BY: DZ  
APPROVED BY: DS

RFDS REV #: 2

**PERMITTING DOCUMENTS**

SUBMITTALS

REV	DATE	DESCRIPTION
A	08/20/2021	ISSUED FOR REVIEW
B	08/18/2021	REVISION
C	03/10/2022	MOUNT REVISION
D	03/14/2022	ISSUED FOR PERMITTING

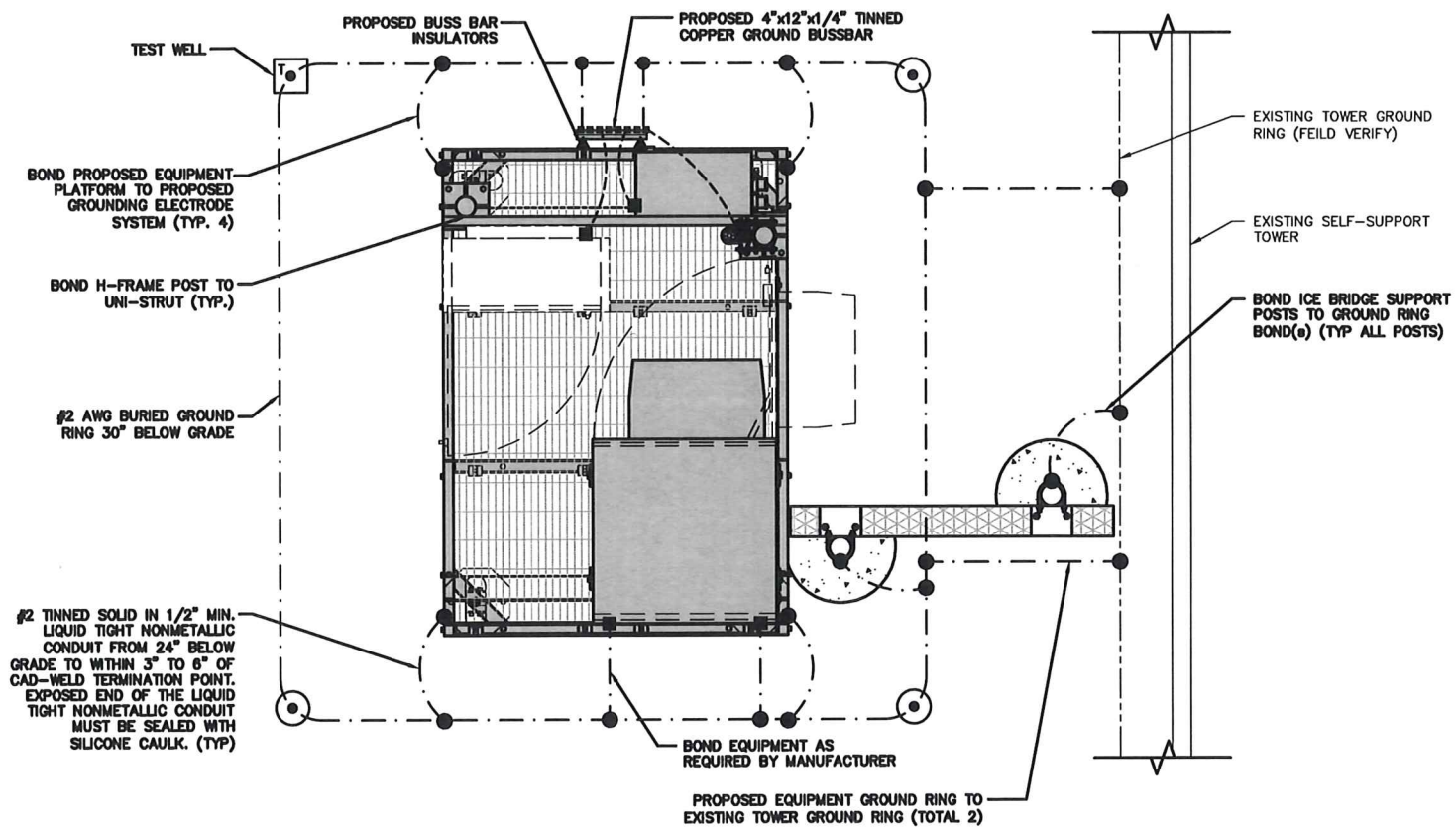
A&E PROJECT NUMBER  
2021.0030.0075

DISH WIRELESS, LLC.  
PROJECT INFORMATION  
MWMKE00224A  
8330 N RAYNOR AVE  
FRANKSVILLE, WI 53126

SHEET TITLE  
ELECTRICAL ONE-LINE  
& PANEL SCHEDULE

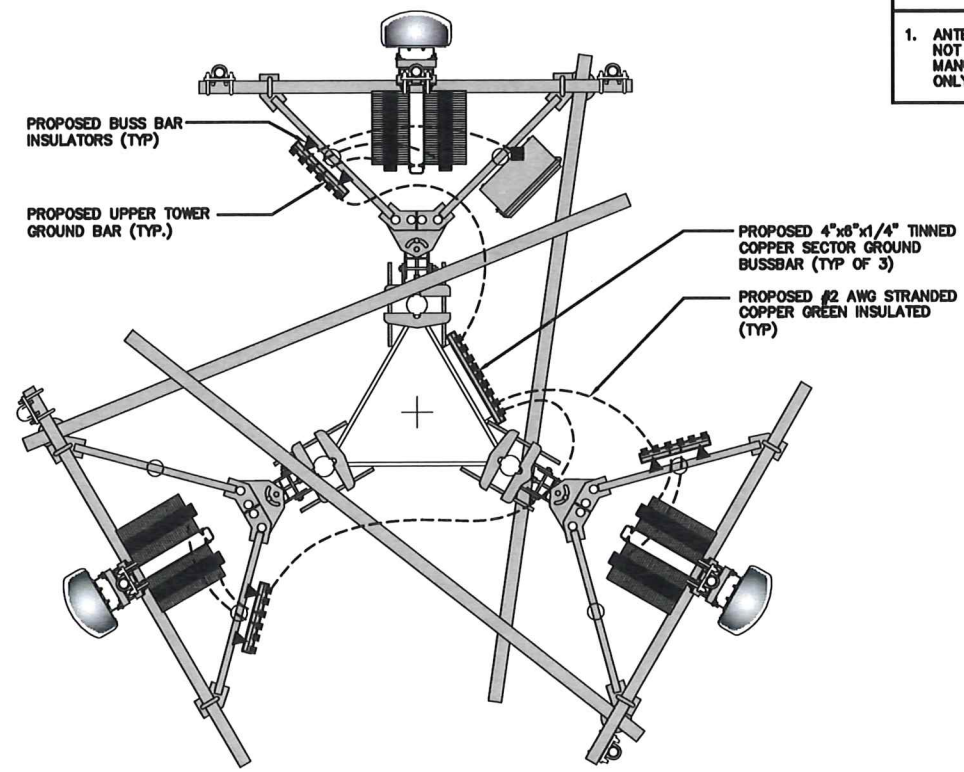
SHEET NUMBER

E-3



TYPICAL EQUIPMENT GROUNDING PLAN

NO SCALE 1

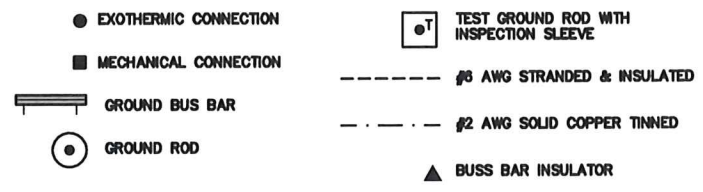


TYPICAL ANTENNA GROUNDING PLAN

NO SCALE 2

NOTES

1. ANTENNAS AND OVP SHOWN ARE GENERIC AND NOT REFERENCING TO A SPECIFIC MANUFACTURER. THIS LAYOUT IS FOR REFERENCE ONLY



GROUNDING LEGEND

- GROUNDING IS SHOWN DIAGRAMMATICALLY ONLY.
- CONTRACTOR SHALL GROUND ALL EQUIPMENT AS A COMPLETE SYSTEM. GROUNDING SHALL BE IN COMPLIANCE WITH NEC SECTION 250 AND DISH WIRELESS, LLC. GROUNDING AND BONDING REQUIREMENTS AND MANUFACTURER'S SPECIFICATIONS.
- ALL GROUND CONDUCTORS SHALL BE COPPER; NO ALUMINUM CONDUCTORS SHALL BE USED.

GROUNDING KEY NOTES

- (A) EXTERIOR GROUND RING: #2 AWG SOLID COPPER, BURIED AT A DEPTH OF AT LEAST 30 INCHES BELOW GRADE, OR 6 INCHES BELOW THE FROST LINE AND APPROXIMATELY 24 INCHES FROM THE EXTERIOR WALL OR FOOTING.
- (B) TOWER GROUND RING: THE GROUND RING SYSTEM SHALL BE INSTALLED AROUND AN ANTENNA TOWER'S LEGS, AND/OR GUY ANCHORS. WHERE SEPARATE SYSTEMS HAVE BEEN PROVIDED FOR THE TOWER AND THE BUILDING, AT LEAST TWO BONDS SHALL BE MADE BETWEEN THE TOWER RING GROUND SYSTEM AND THE BUILDING RING GROUND SYSTEM USING MINIMUM #2 AWG SOLID COPPER CONDUCTORS.
- (C) INTERIOR GROUND RING: #2 AWG STRANDED GREEN INSULATED COPPER CONDUCTOR EXTENDED AROUND THE PERIMETER OF THE EQUIPMENT AREA. ALL NON-TELECOMMUNICATIONS RELATED METALLIC OBJECTS FOUND WITHIN A SITE SHALL BE GROUNDED TO THE INTERIOR GROUND RING WITH #6 AWG STRANDED GREEN INSULATED CONDUCTOR.
- (D) BOND TO INTERIOR GROUND RING: #2 AWG SOLID TINNED COPPER WIRE PRIMARY BONDS SHALL BE PROVIDED AT LEAST AT FOUR POINTS ON THE INTERIOR GROUND RING, LOCATED AT THE CORNERS OF THE BUILDING.
- (E) GROUND ROD: UL LISTED COPPER CLAD STEEL. MINIMUM 1/2" DIAMETER BY EIGHT FEET LONG. GROUND RODS SHALL BE INSTALLED WITH INSPECTION SLEEVES. GROUND RODS SHALL BE DRIVEN TO THE DEPTH OF GROUND RING CONDUCTOR.
- (F) CELL REFERENCE GROUND BAR: POINT OF GROUND REFERENCE FOR ALL COMMUNICATIONS EQUIPMENT FRAMES. ALL BONDS ARE MADE WITH #2 AWG UNLESS NOTED OTHERWISE STRANDED GREEN INSULATED COPPER CONDUCTORS. BOND TO GROUND RING WITH (2) #2 SOLID TINNED COPPER CONDUCTORS.
- (G) HATCH PLATE GROUND BAR: BOND TO THE INTERIOR GROUND RING WITH TWO #2 AWG STRANDED GREEN INSULATED COPPER CONDUCTORS. WHEN A HATCH-PLATE AND A CELL REFERENCE GROUND BAR ARE BOTH PRESENT, THE CRGB MUST BE CONNECTED TO THE HATCH-PLATE AND TO THE INTERIOR GROUND RING USING (2) TWO #2 AWG STRANDED GREEN INSULATED COPPER CONDUCTORS EACH.
- (H) EXTERIOR CABLE ENTRY PORT GROUND BARS: LOCATED AT THE ENTRANCE TO THE CELL SITE BUILDING. BOND TO GROUND RING WITH A #2 AWG SOLID TINNED COPPER CONDUCTORS WITH AN EXOTHERMIC WELD AND INSPECTION SLEEVE.
- (I) TELCO GROUND BAR: BOND TO BOTH CELL REFERENCE GROUND BAR OR EXTERIOR GROUND RING.
- (J) FRAME BONDING: THE BONDING POINT FOR TELECOM EQUIPMENT FRAMES SHALL BE THE GROUND BUS THAT IS NOT ISOLATED FROM THE EQUIPMENTS METAL FRAMEWORK.
- (K) INTERIOR UNIT BONDS: METAL FRAMES, CABINETS AND INDIVIDUAL METALLIC UNITS LOCATED WITH THE AREA OF THE INTERIOR GROUND RING REQUIRE A #6 AWG STRANDED GREEN INSULATED COPPER BOND TO THE INTERIOR GROUND RING.
- (L) FENCE AND GATE GROUNDING: METAL FENCES WITHIN 7 FEET OF THE EXTERIOR GROUND RING OR OBJECTS BONDED TO THE EXTERIOR GROUND RING SHALL BE BONDED TO THE GROUND RING WITH A #2 AWG SOLID TINNED COPPER CONDUCTOR AT AN INTERVAL NOT EXCEEDING 25 FEET. BONDS SHALL BE MADE AT EACH GATE POST AND ACROSS GATE OPENINGS.
- (M) EXTERIOR UNIT BONDS: METALLIC OBJECTS, EXTERNAL TO OR MOUNTED TO THE BUILDING, SHALL BE BONDED TO THE EXTERIOR GROUND RING. USING #2 TINNED SOLID COPPER WIRE
- (N) ICE BRIDGE SUPPORTS: EACH ICE BRIDGE LEG SHALL BE BONDED TO THE GROUND RING WITH #2 AWG BARE TINNED COPPER CONDUCTOR. PROVIDE EXOTHERMIC WELDS AT BOTH THE ICE BRIDGE LEG AND BURIED GROUND RING.
- (O) DURING ALL DC POWER SYSTEM CHANGES INCLUDING DC SYSTEM CHANGE OUTS, RECTIFIER REPLACEMENTS OR ADDITIONS, BREAKER DISTRIBUTION CHANGES, BATTERY ADDITIONS, BATTERY REPLACEMENTS AND INSTALLATIONS OR CHANGES TO DC CONVERTER SYSTEMS IT SHALL BE REQUIRED THAT SERVICE CONTRACTORS VERIFY ALL DC POWER SYSTEMS ARE EQUIPPED WITH A MASTER DC SYSTEM RETURN GROUND CONDUCTOR FROM THE DC POWER SYSTEM COMMON RETURN BUS DIRECTLY CONNECTED TO THE CELL SITE REFERENCE GROUND BAR
- (P) TOWER TOP COLLECTOR BUSS BAR IS TO BE MECHANICALLY BONDED TO PROPOSED ANTENNA MOUNT COLLAR.
- (Q) REFER TO DISH WIRELESS, LLC. GROUNDING NOTES.

GROUNDING KEY NOTES

NO SCALE 3



5701 SOUTH SANTA FE DRIVE  
LITTLETON, CO 80120



1100 E. WOODFIELD ROAD, SUITE 500  
SCHAUMBURG, ILLINOIS 60173  
TEL: 847-908-8400  
COA# 3620-11  
www.FullertonEngineering.com



IT IS A VIOLATION OF LAW FOR ANY PERSON, UNLESS THEY ARE ACTING UNDER THE DIRECTION OF A LICENSED PROFESSIONAL ENGINEER, TO ALTER THIS DOCUMENT.

DRAWN BY:	CHECKED BY:	APPROVED BY:
MS	DZ	DS

RFDS REV #: 2

PERMITTING DOCUMENTS

SUBMITTALS		
REV	DATE	DESCRIPTION
A	08/20/2021	ISSUED FOR REVIEW
B	08/18/2021	REVISION
C	03/10/2022	MOUNT REVISION
D	03/14/2022	ISSUED FOR PERMITTING

A&E PROJECT NUMBER  
2021.0030.0075

DISH WIRELESS, LLC.  
PROJECT INFORMATION

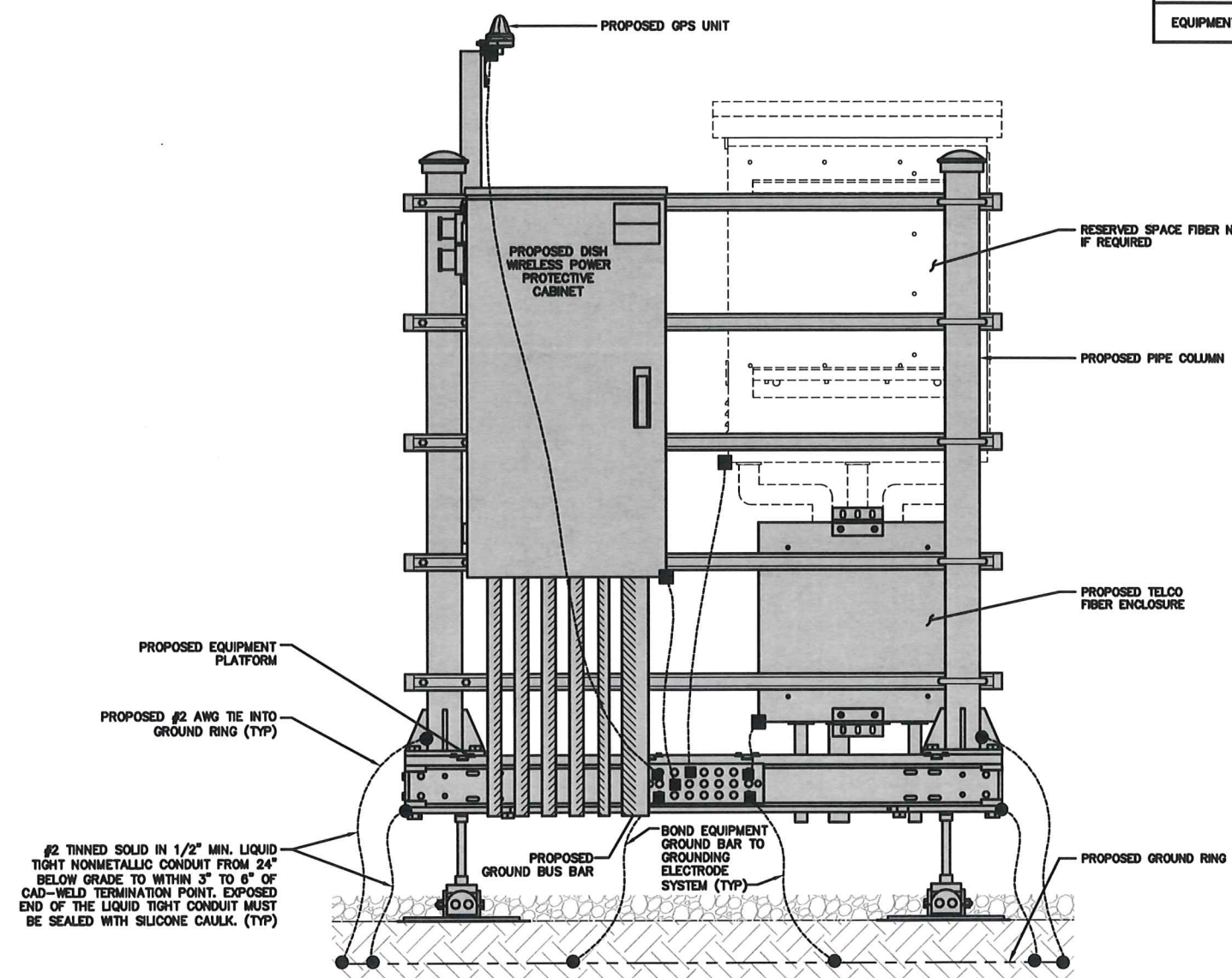
MWMKE00224A  
8330 N RAYNOR AVE  
FRANKSVILLE, WI 53126

SHEET TITLE  
GROUNDING PLANS  
AND NOTES

SHEET NUMBER

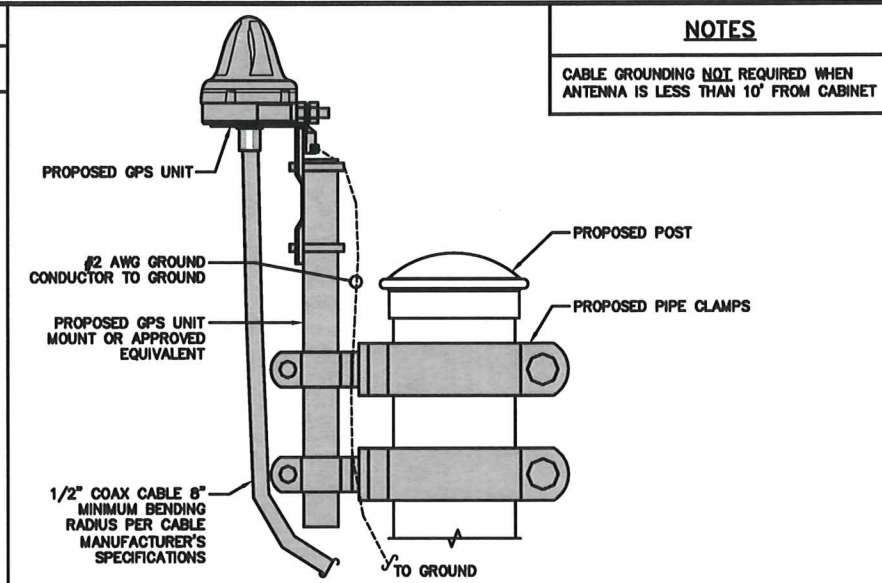
G-1

**NOTES**  
EQUIPMENT CABINET OMITTED FOR CLARITY

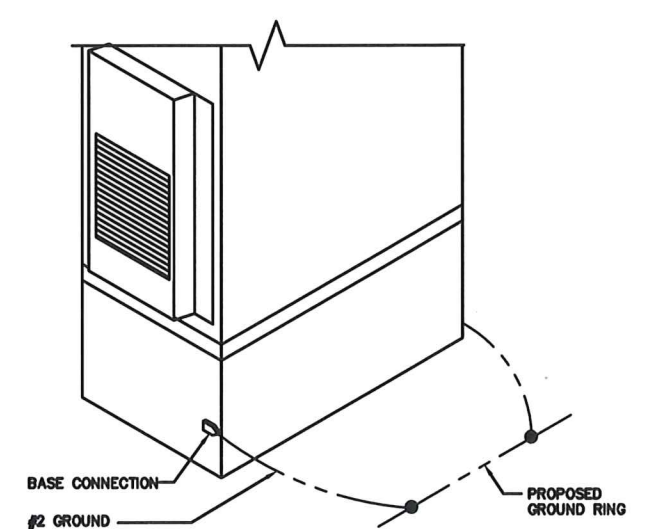


**H-FRAME GROUNDING DETAIL** NO SCALE 1

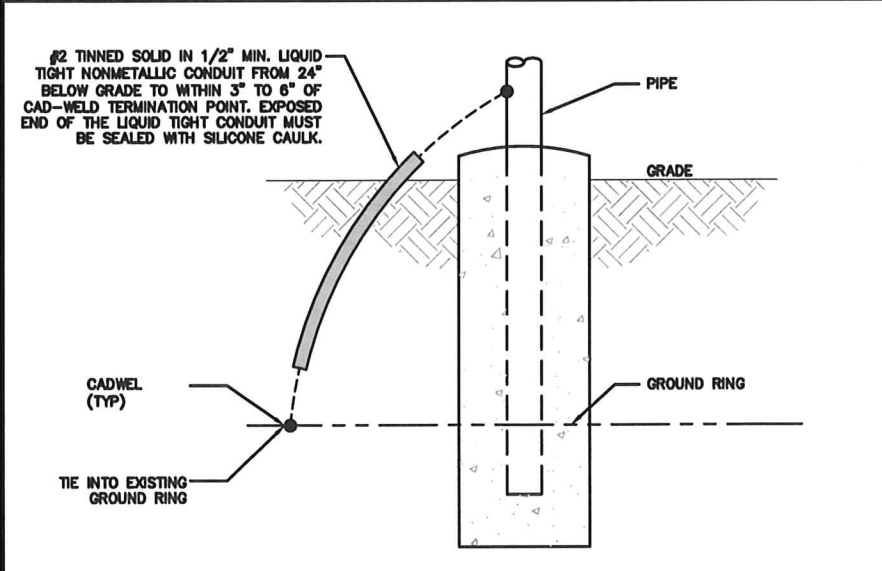
**NOTES**  
CABLE GROUNDING NOT REQUIRED WHEN ANTENNA IS LESS THAN 10' FROM CABINET



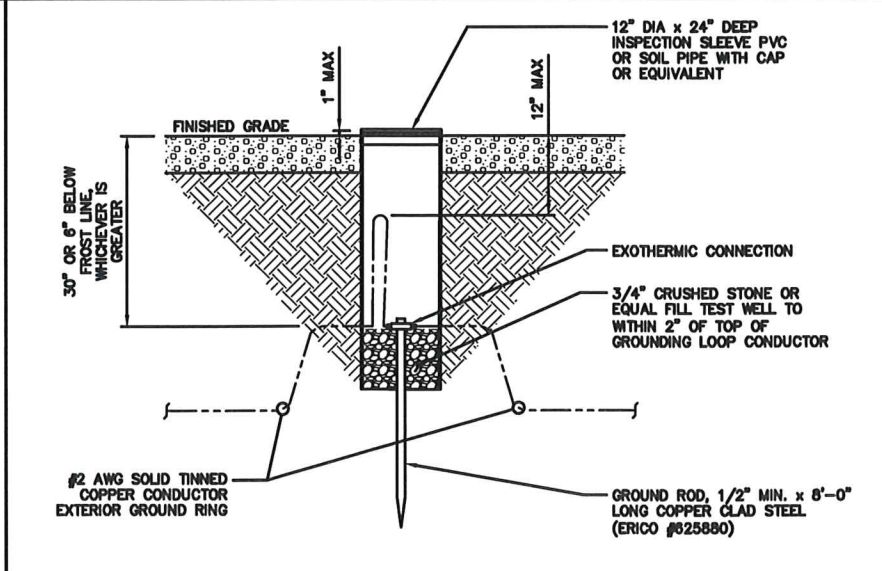
**TYPICAL GPS UNIT GROUNDING** NO SCALE 2



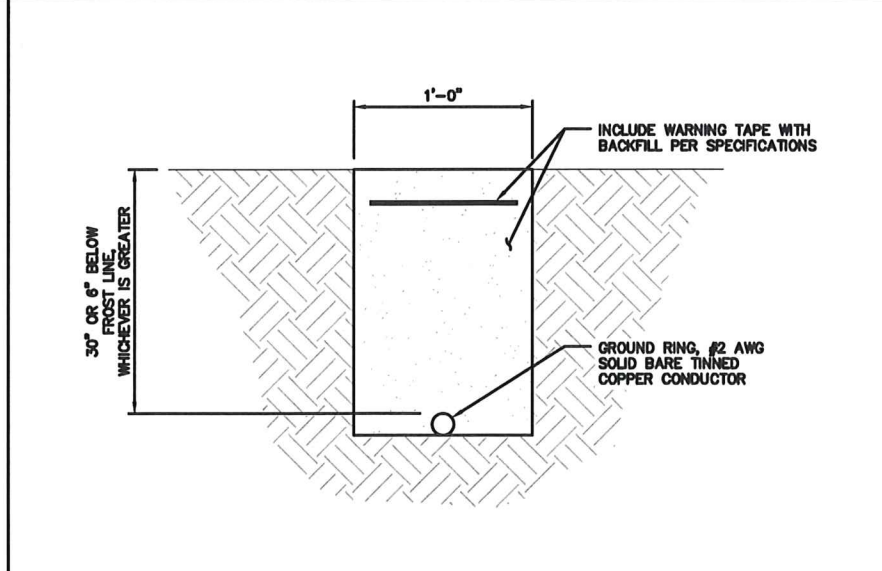
**OUTDOOR CABINET GROUNDING** NO SCALE 3



**TRANSITIONING GROUND DETAIL** NO SCALE 4



**TYPICAL TEST GROUND ROD WITH INSPECTION SLEEVE** NO SCALE 5



**TYPICAL GROUND RING TRENCH** NO SCALE 6



5701 SOUTH SANTA FE DRIVE  
LITTLETON, CO 80120



1100 E. WOODFIELD ROAD, SUITE 500  
SCHAUMBURG, ILLINOIS 60173  
TEL: 847-908-8400  
COA# 3620-11  
www.FullertonEngineering.com



IT IS A VIOLATION OF LAW FOR ANY PERSON, UNLESS THEY ARE ACTING UNDER THE DIRECTION OF A LICENSED PROFESSIONAL ENGINEER, TO ALTER THIS DOCUMENT.

DRAWN BY: MS CHECKED BY: DZ APPROVED BY: DS  
RFDS REV #: 2

**PERMITTING DOCUMENTS**

REV	DATE	DESCRIPTION
A	08/20/2021	ISSUED FOR REVIEW
B	08/19/2021	REVISION
C	03/10/2022	MOUNT REVISION
D	03/14/2022	ISSUED FOR PERMITTING

A&E PROJECT NUMBER  
2021.0030.0075

DISH WIRELESS, LLC.  
PROJECT INFORMATION  
MWMKE00224A  
8330 N RAYNOR AVE  
FRANKSVILLE, WI 53126

SHEET TITLE  
GROUNDING DETAILS

SHEET NUMBER  
**G-2**