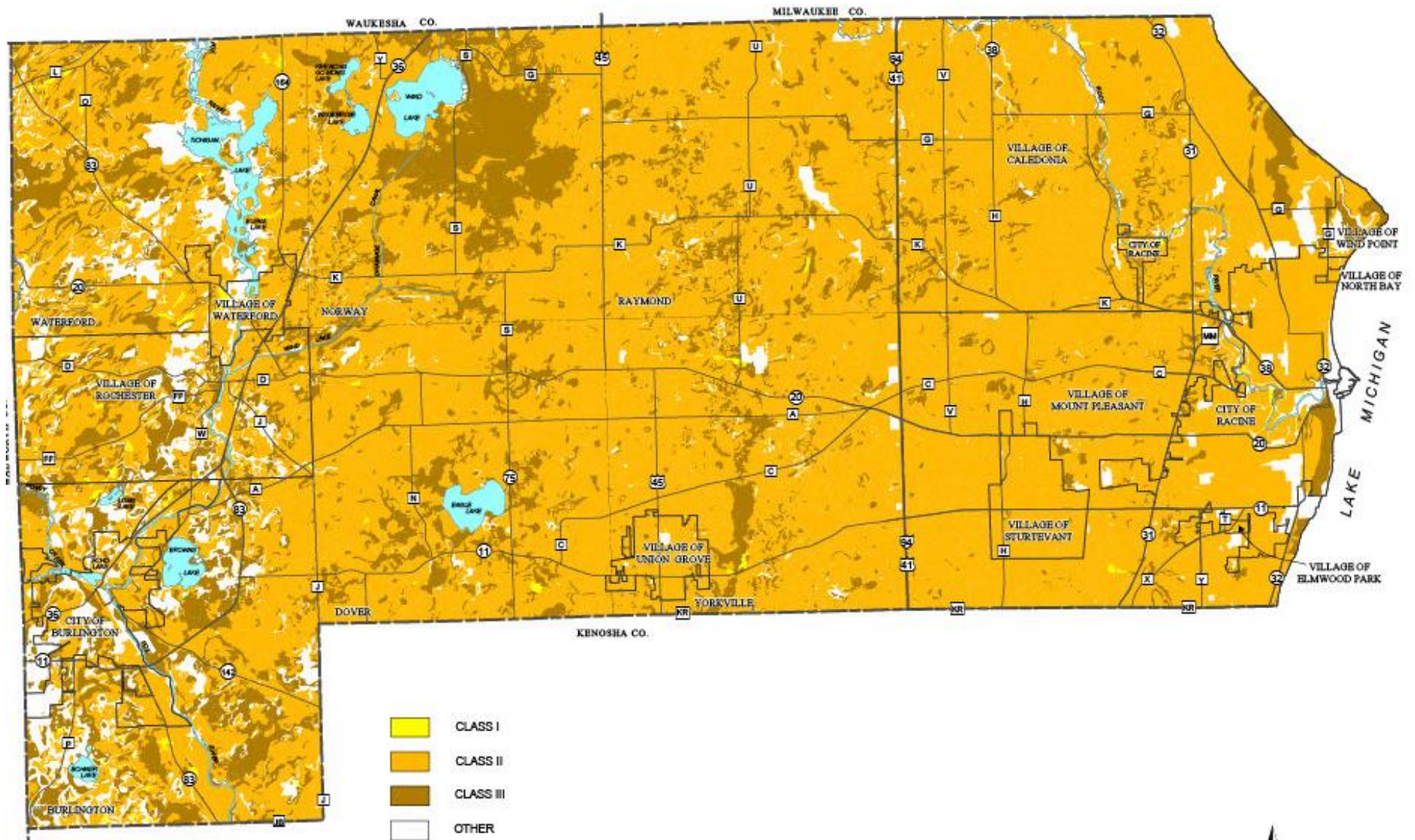


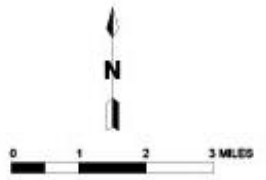
Map 1

AGRICULTURAL SOIL CAPABILITY IN RACINE COUNTY



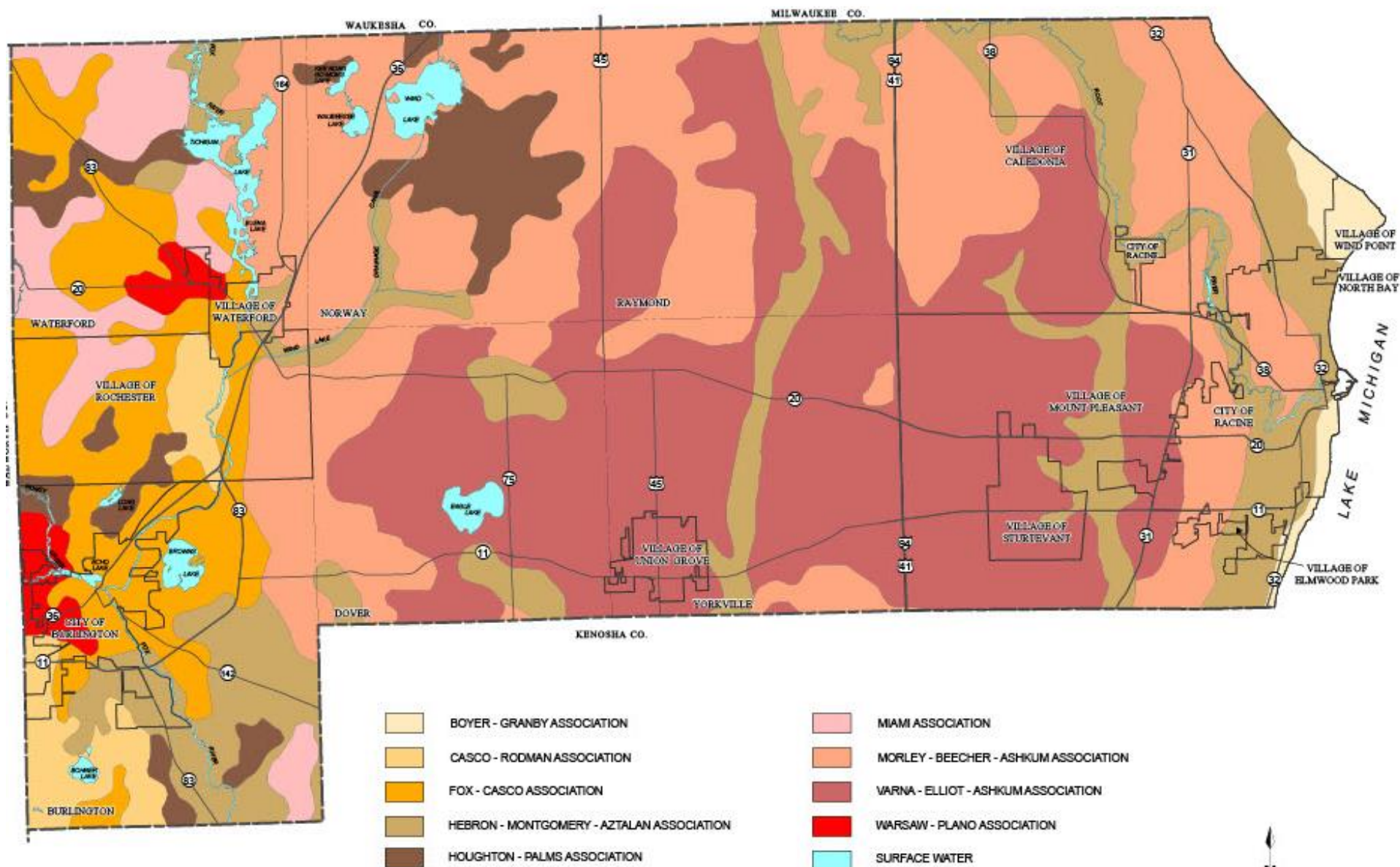
- CLASS I
- CLASS II
- CLASS III
- OTHER

Source: USDA - Natural Resources Conservation Service and SEWRPC.



Map 2

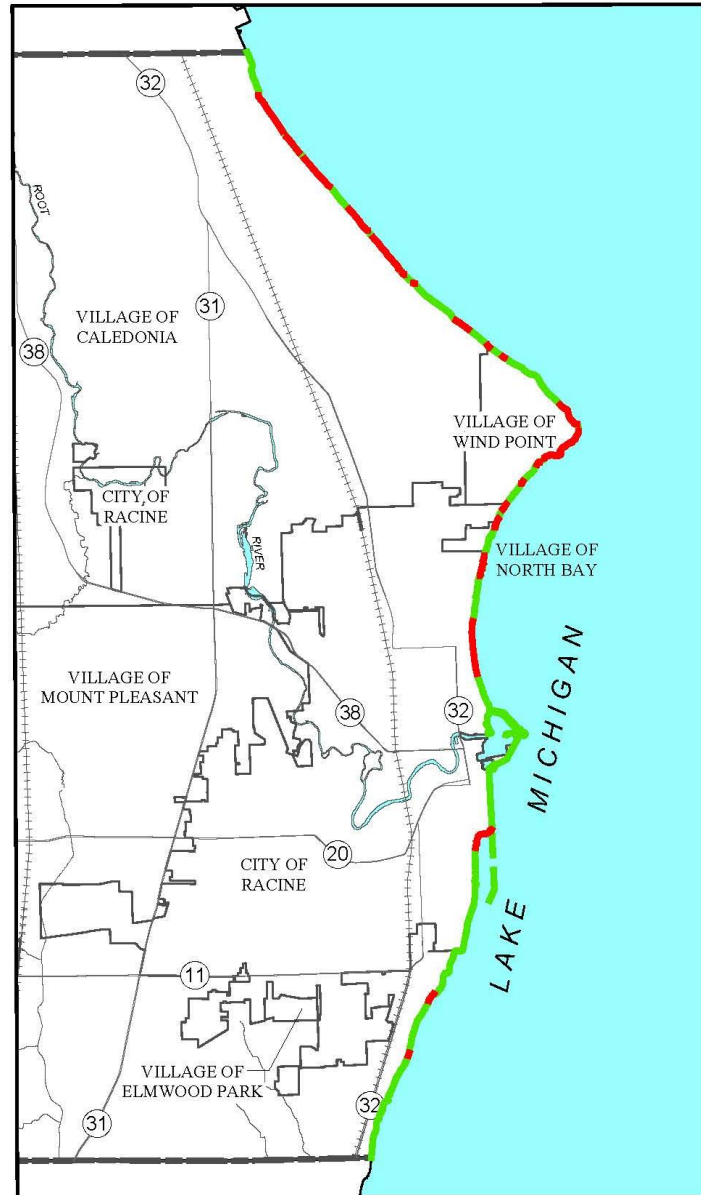
GENERAL SOIL ASSOCIATIONS IN RACINE COUNTY



Source: USDA - Natural Resources Conservation Service and SEWRPC.

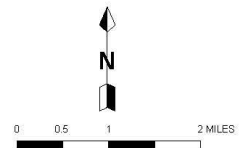


LAKE MICHIGAN SHORELINE / EROSION PROTECTION IN RACINE COUNTY: 2015



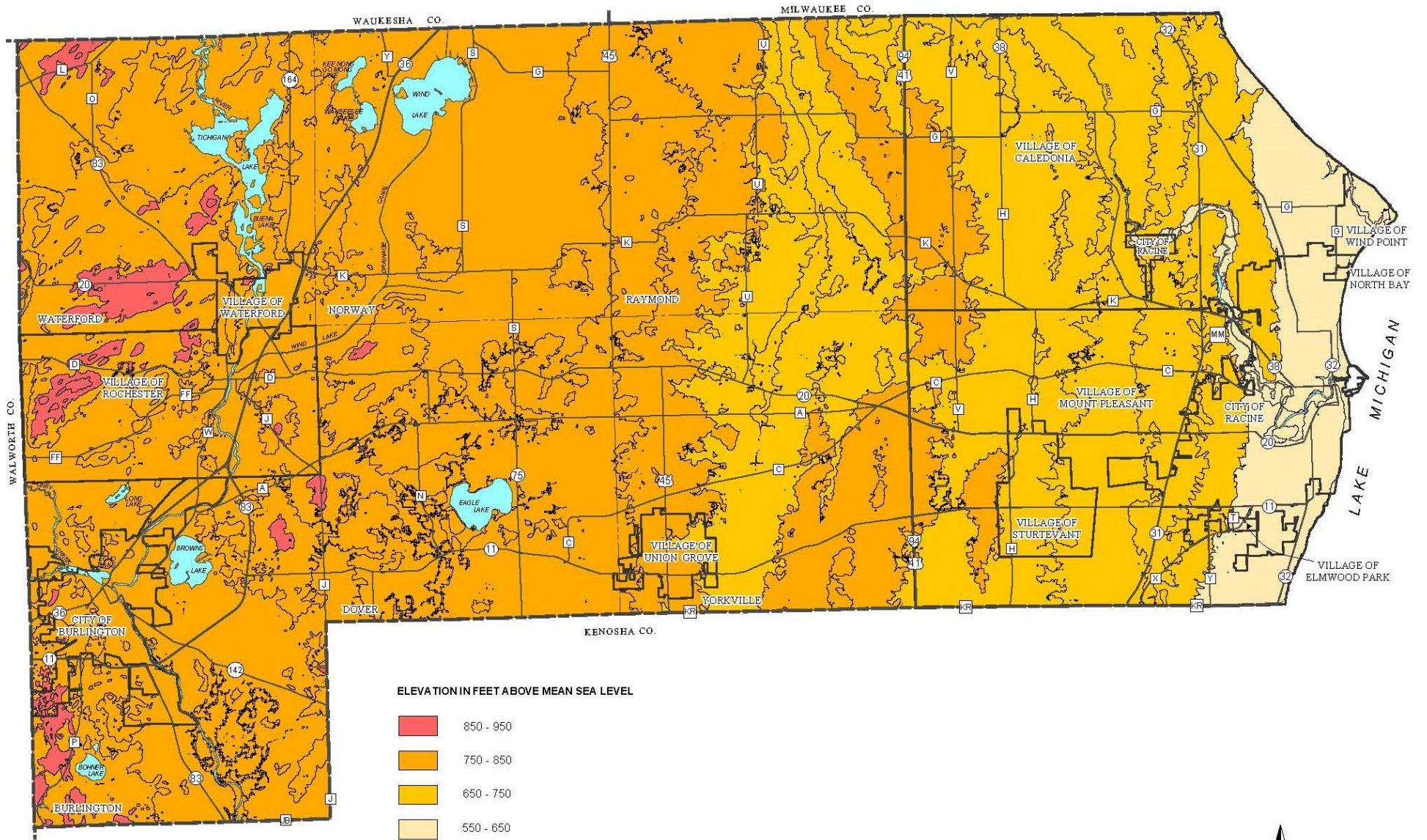
- PROTECTED SHORELINE
- UNPROTECTED SHORELINE

Source: S.D. Mackey, Habitat Solutions, and SEWRPC.

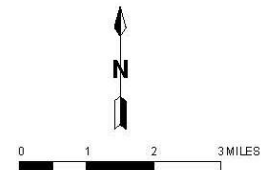


Map 4

GENERALIZED TOPOGRAPHIC CHARACTERISTICS IN RACINE COUNTY

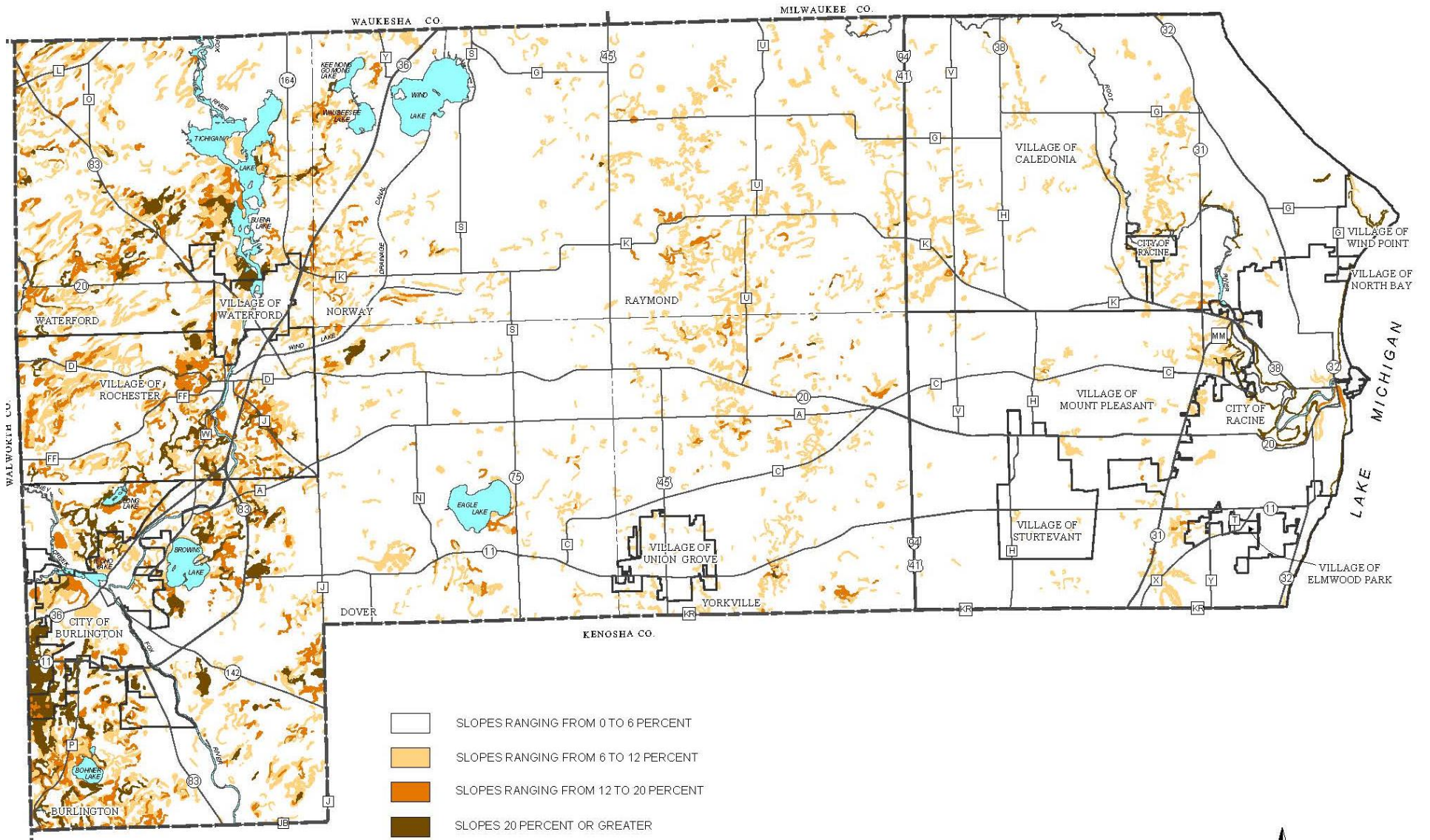


Source: U.S. Geological Survey and SEWRPC.

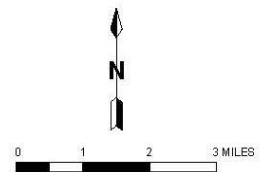


Map 5

SLOPE ANALYSIS FOR RACINE COUNTY

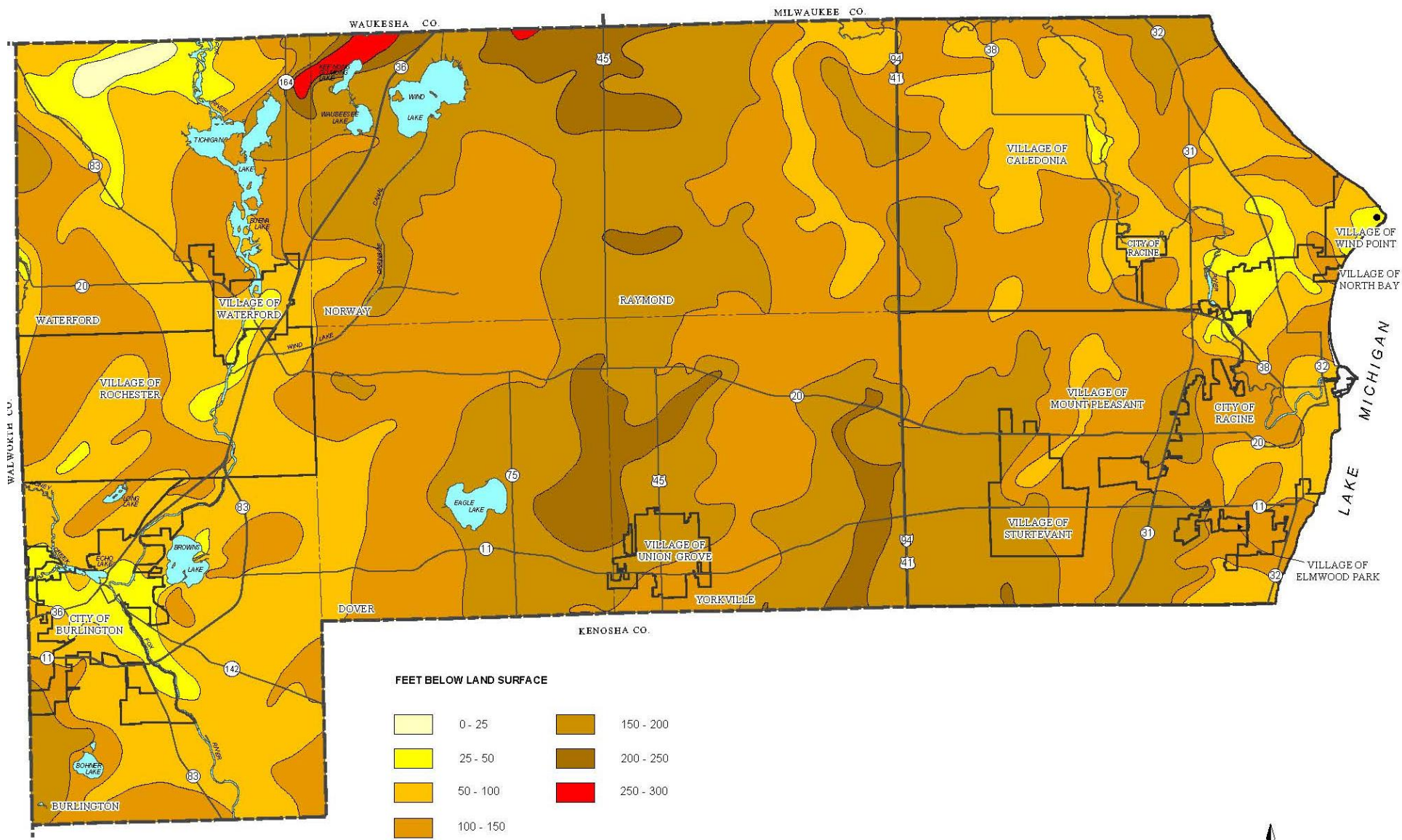


Source: USDA - Natural Resources Conservation Service and SEWRPC.

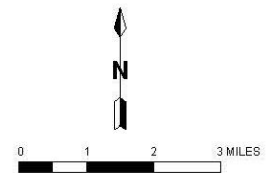


Map 6

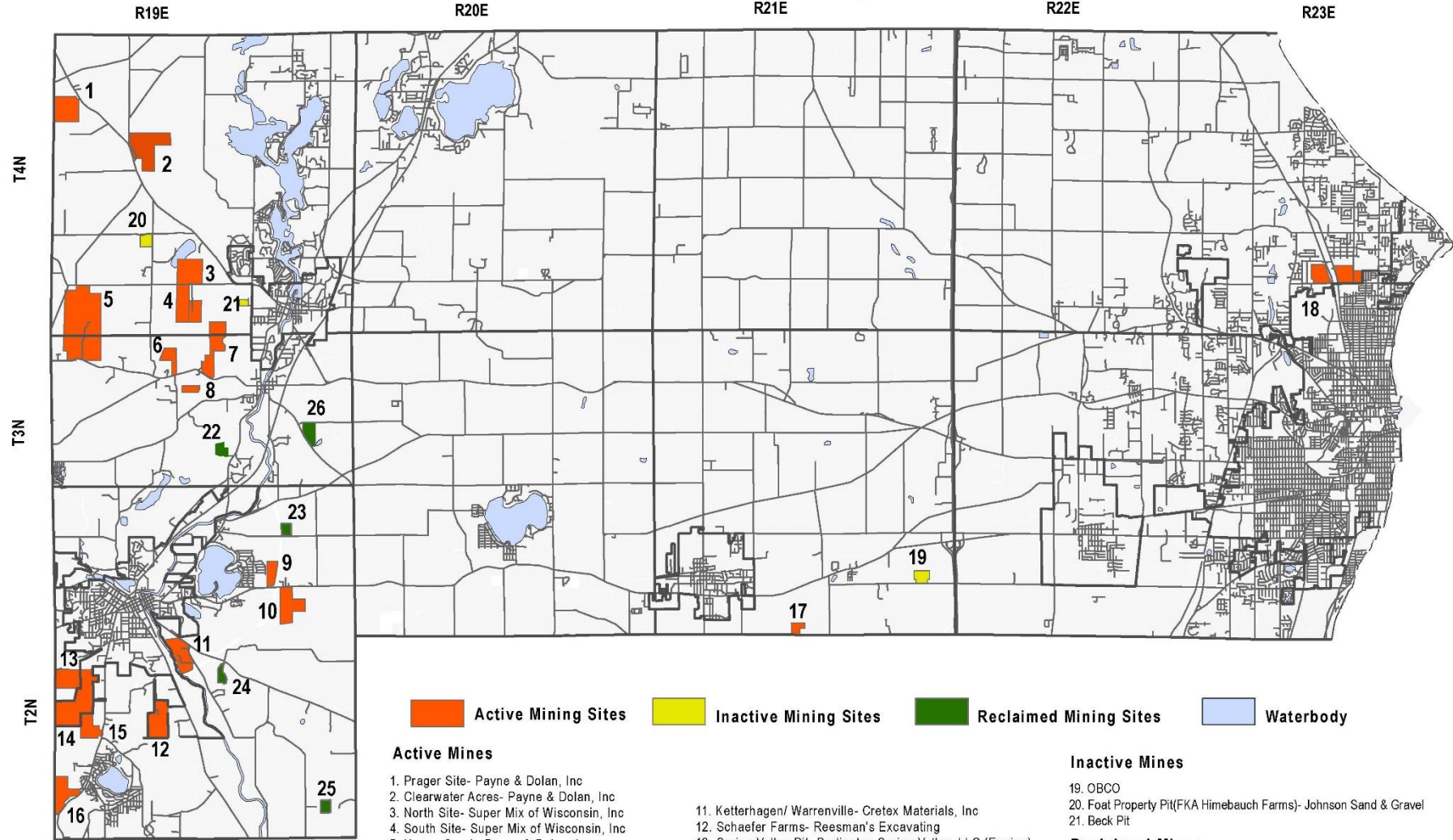
GENERALIZED DEPTH TO BEDROCK IN RACINE COUNTY



Source: University of Wisconsin - Extension, Wisconsin Geological and Natural History Survey, and SEWRPC.



Non-Metallic Mining Sites



Active Mining Sites
 Inactive Mining Sites
 Reclaimed Mining Sites
 Waterbody

Active Mines

- 1. Prager Site- Payne & Dolan, Inc
- 2. Clearwater Acres- Payne & Dolan, Inc
- 3. North Site- Super Mix of Wisconsin, Inc
- 4. South Site- Super Mix of Wisconsin, Inc
- 5. Honey Creek- Payne & Dolan, Inc
- 6. Oakes & Jung, LLC
- 7. Park View Sand & Gravel, LLC (Epping; Operator)
- 8. Frost Pit- Racine County
- 9. Wanasek Corporation
- 10. Pine Lake Materials- Trenton Ventures (Epping)

- 11. Ketterhagen/ Warrentville- Cretex Materials, Inc
- 12. Schaefer Farms- Reesman's Excavating
- 13. Spring Valley Pit- Burlington Spring Valley, LLC (Epping)
- 14. Cerami/Nine-T- Cretex materials, Inc
- 15. Hillside Aggregates- TTT Real Estate, LLC (Epping)
- 16. Baumeister Pit- Reesman's Excavating
- 17. Wilkomm- Nick Wilkomm
- 18. Racine Quarry- Payne & Dolan, Inc

Inactive Mines

- 19. OBCO
- 20. Foat Property Pit (FKA Himebauch Farms)- Johnson Sand & Gravel
- 21. Beck Pit

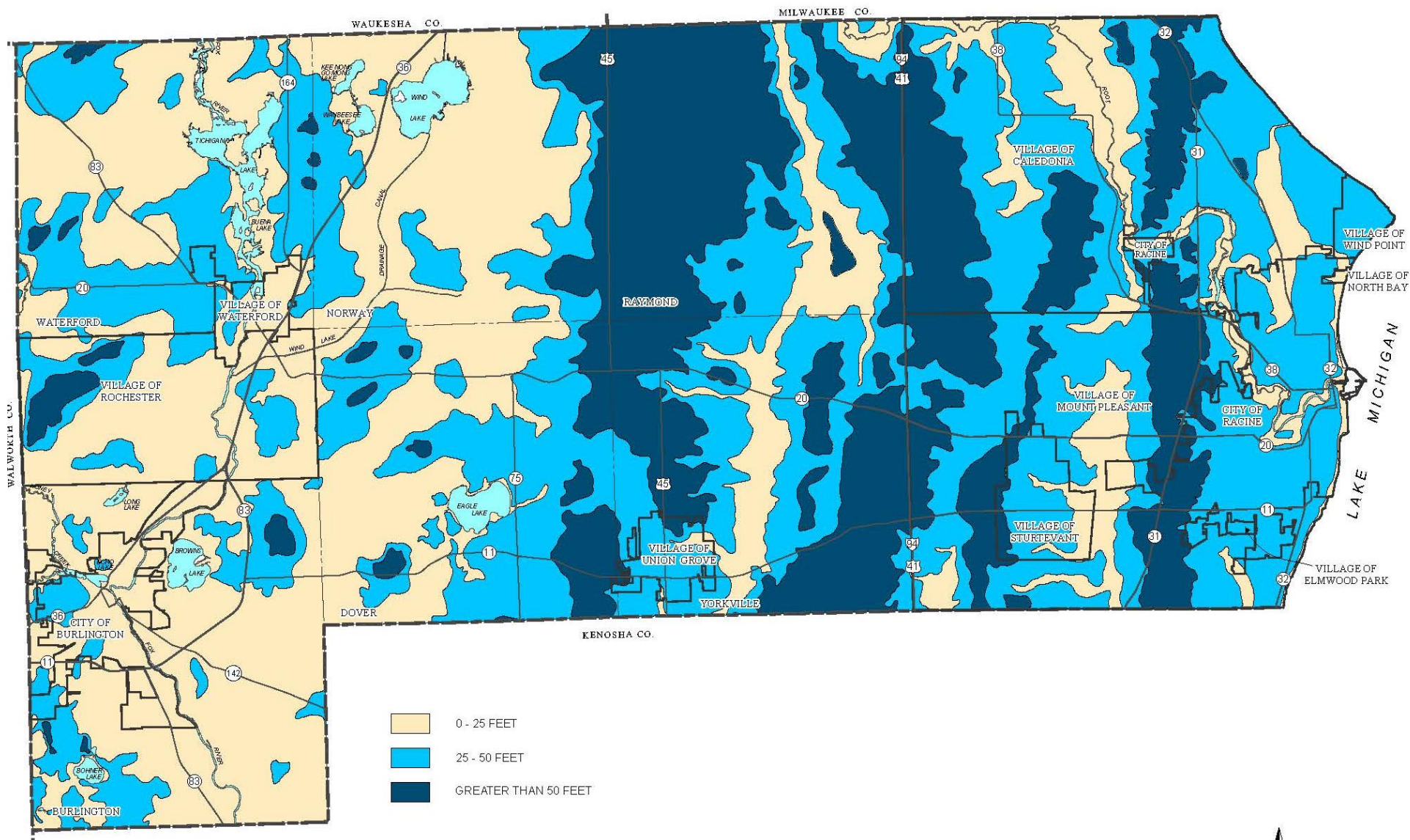
Reclaimed Mines

- 22. Buss & Kramer- Payne & Dolan, Inc
- 23. Coleman Pit- Thomas E. Coleman
- 24. Stipe Pit- JW Peters & Sons
- 25. Cramer Pit- B.R. Amon
- 26. Kruger Pit- Reesman's Excavating

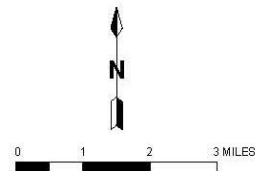

 1 inch = 2 miles
 Map by SMR
 Revised July 29, 2019
 Racine County Development Services

Map 9

DEPTH TO SEASONAL HIGH GROUNDWATER TABLE IN RACINE COUNTY

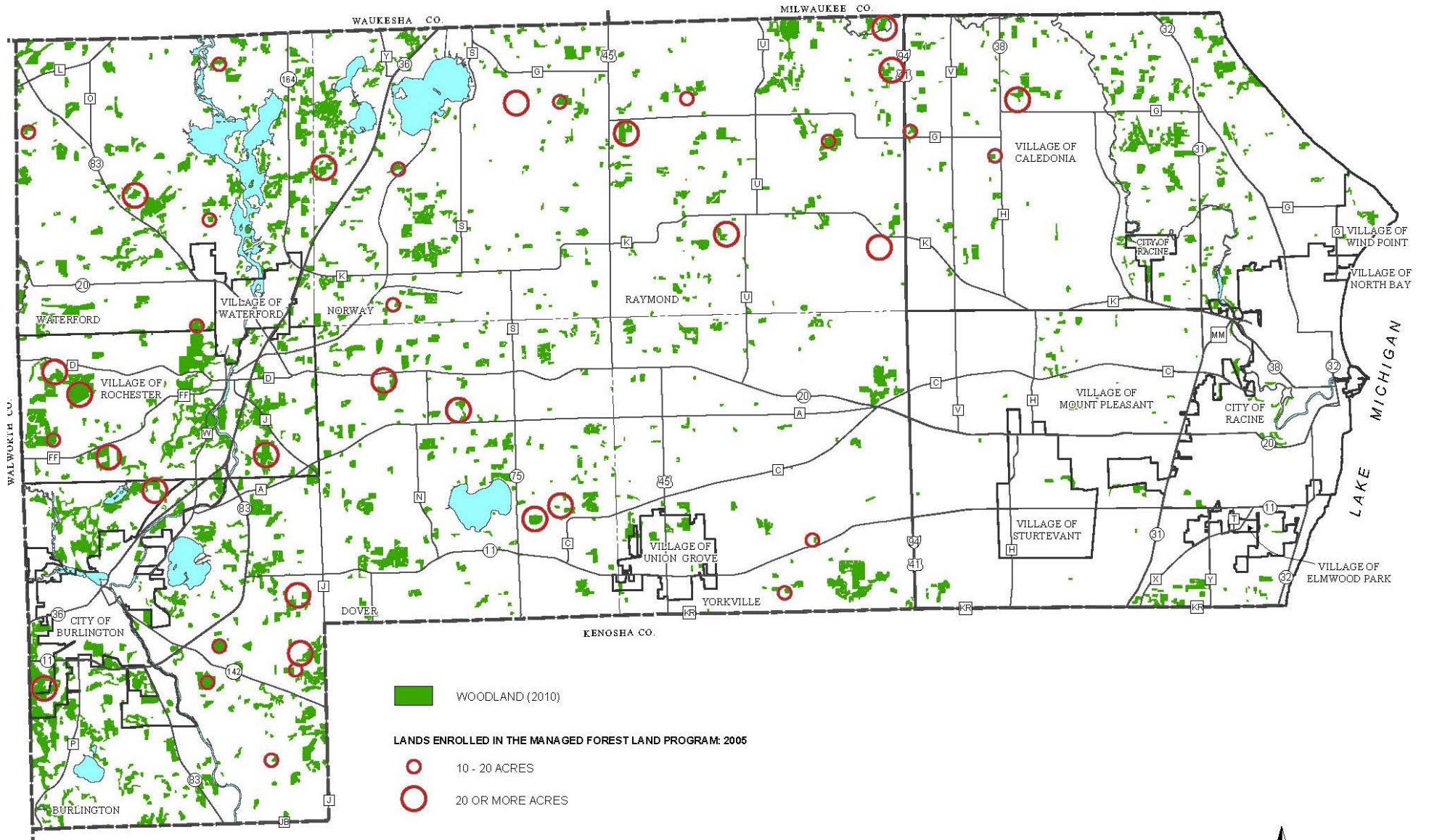


Source: Wisconsin Geological and Natural History Survey and SEWRPC.

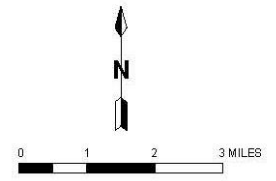


Map 11

WOODLANDS AND MANAGED FOREST LANDS IN RACINE COUNTY

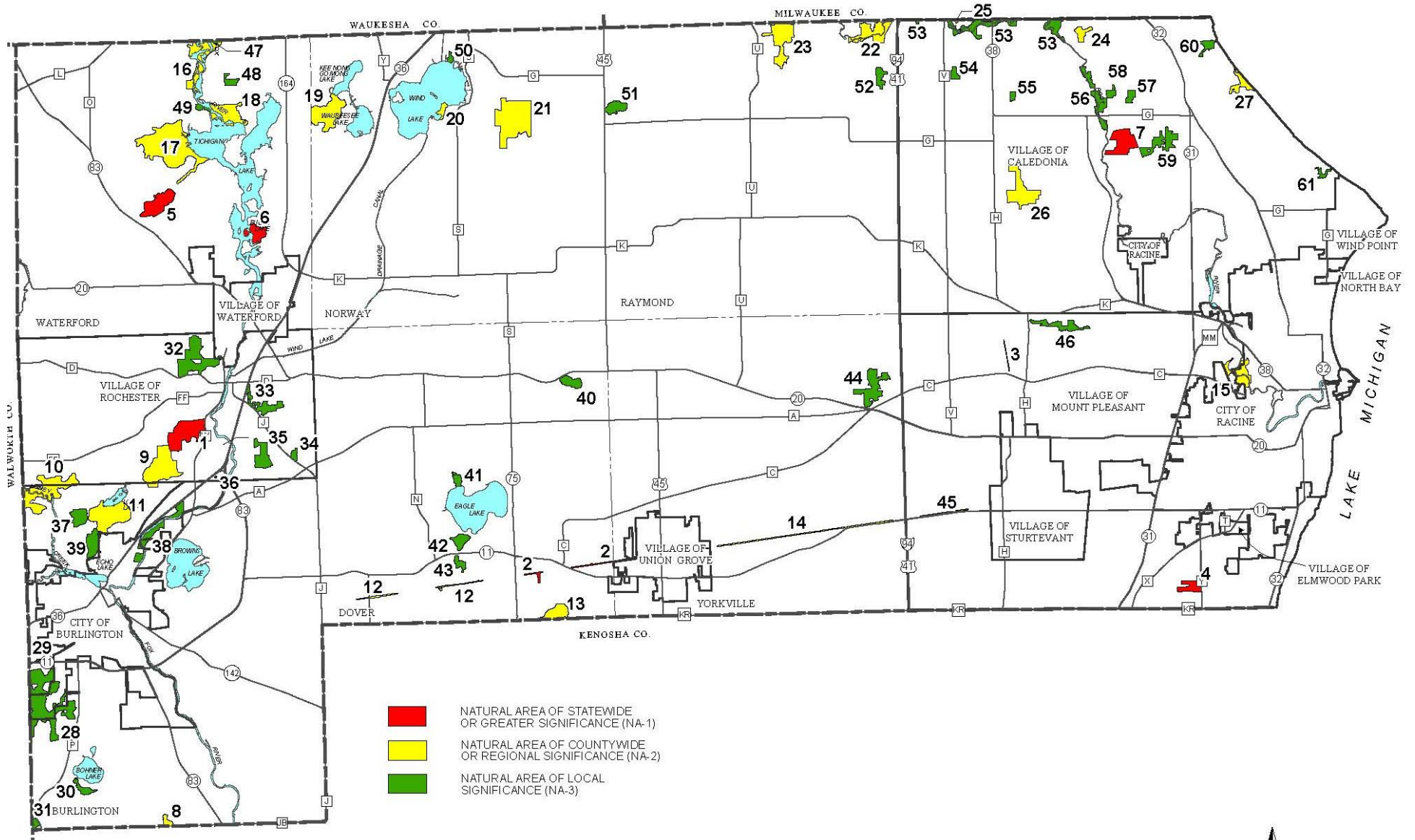


Source: Wisconsin Department of Natural Resources and SEWRPC.



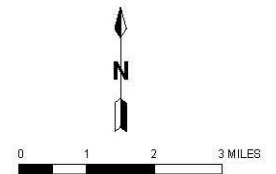
Map 12

NATURAL AREAS IN RACINE COUNTY: 2009



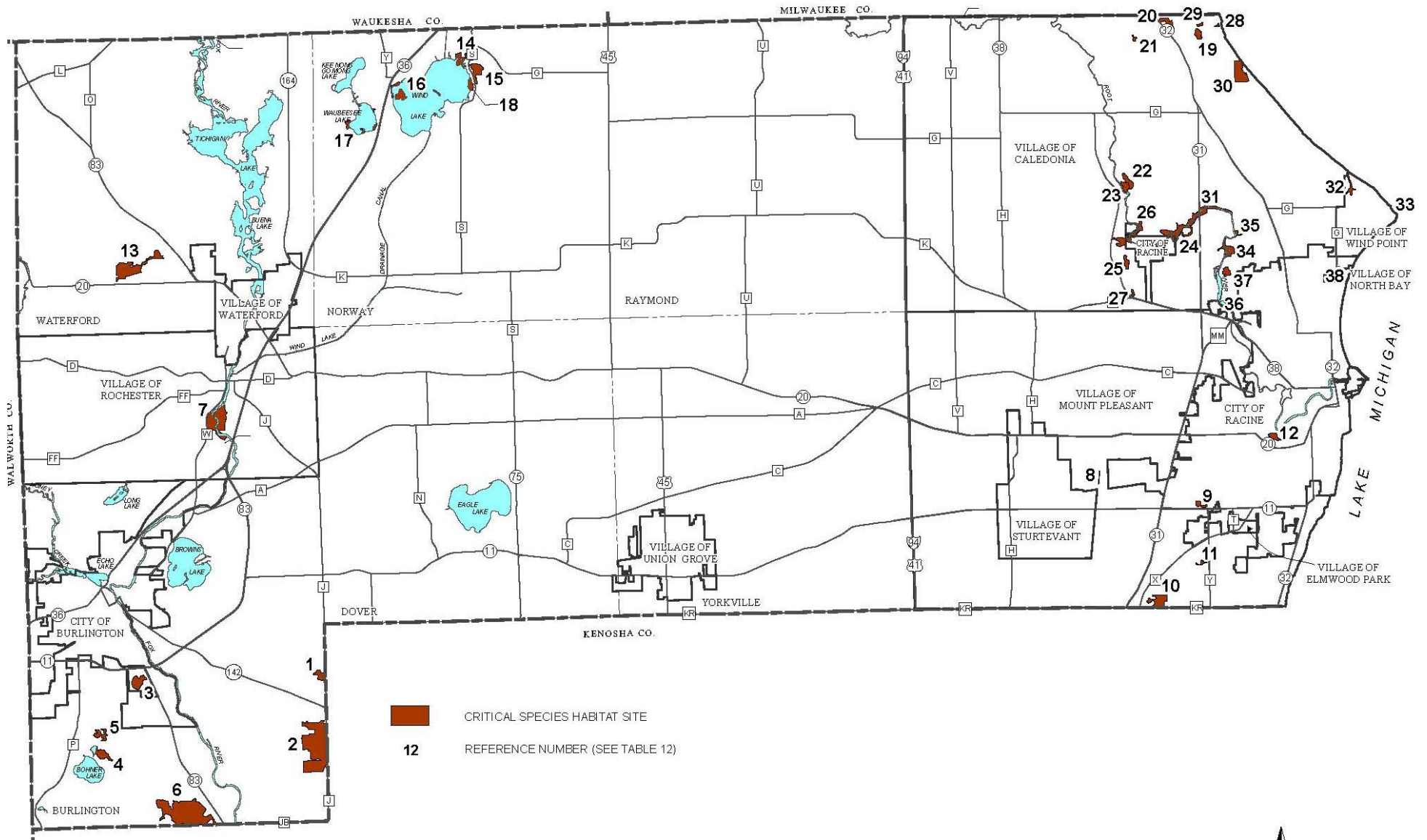
33 REFERENCE NUMBER (SEE TABLE 11)

Source: SEWRPC.



Map 13

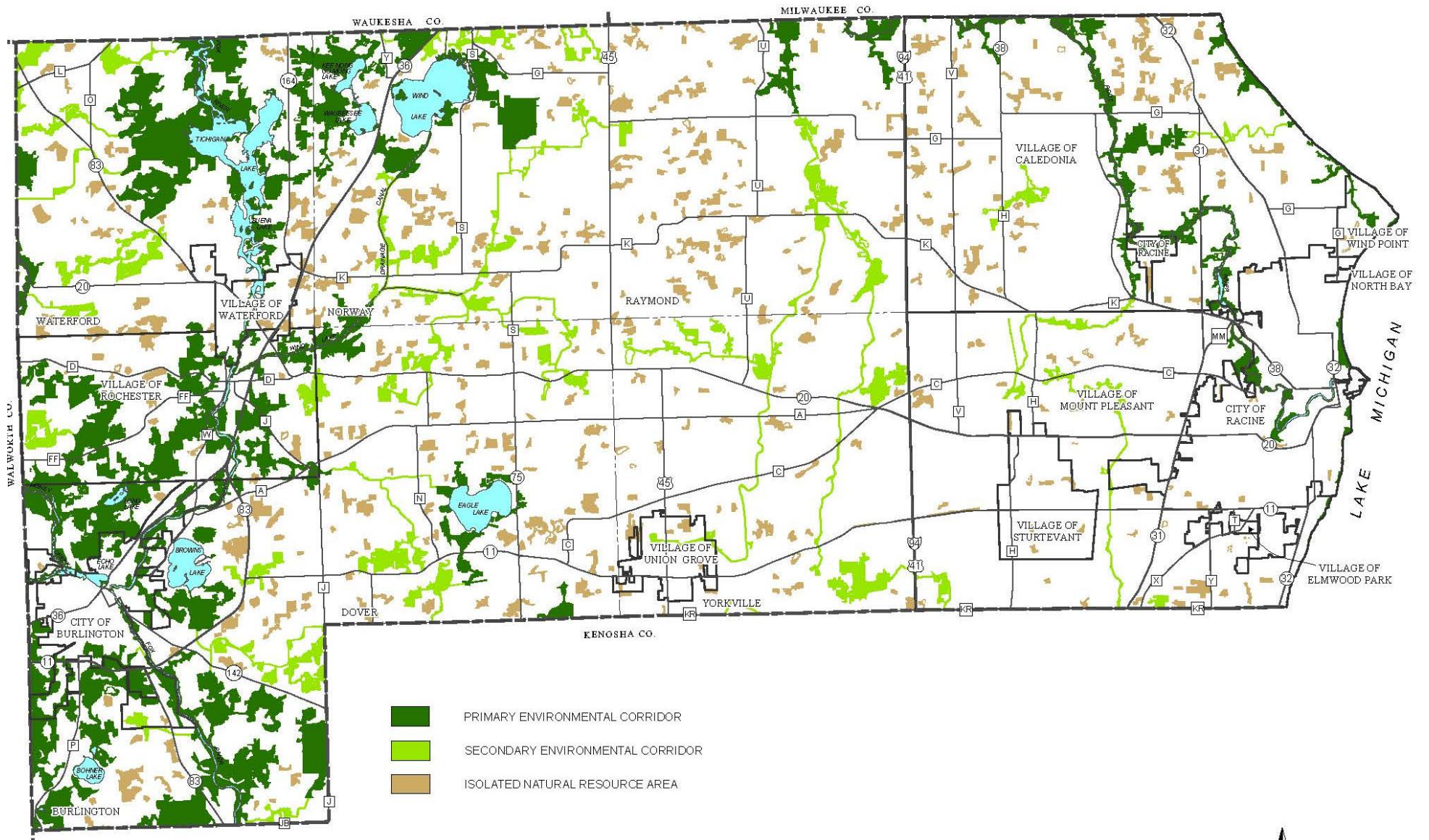
CRITICAL SPECIES HABITAT SITES IN RACINE COUNTY: 2009



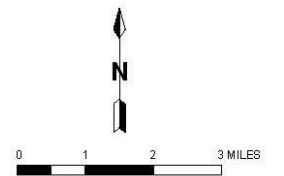
Source: SEWRPC.

Map 14

ENVIRONMENTAL CORRIDORS AND ISOLATED NATURAL RESOURCE AREAS IN RACINE COUNTY: 2010

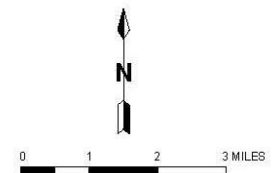
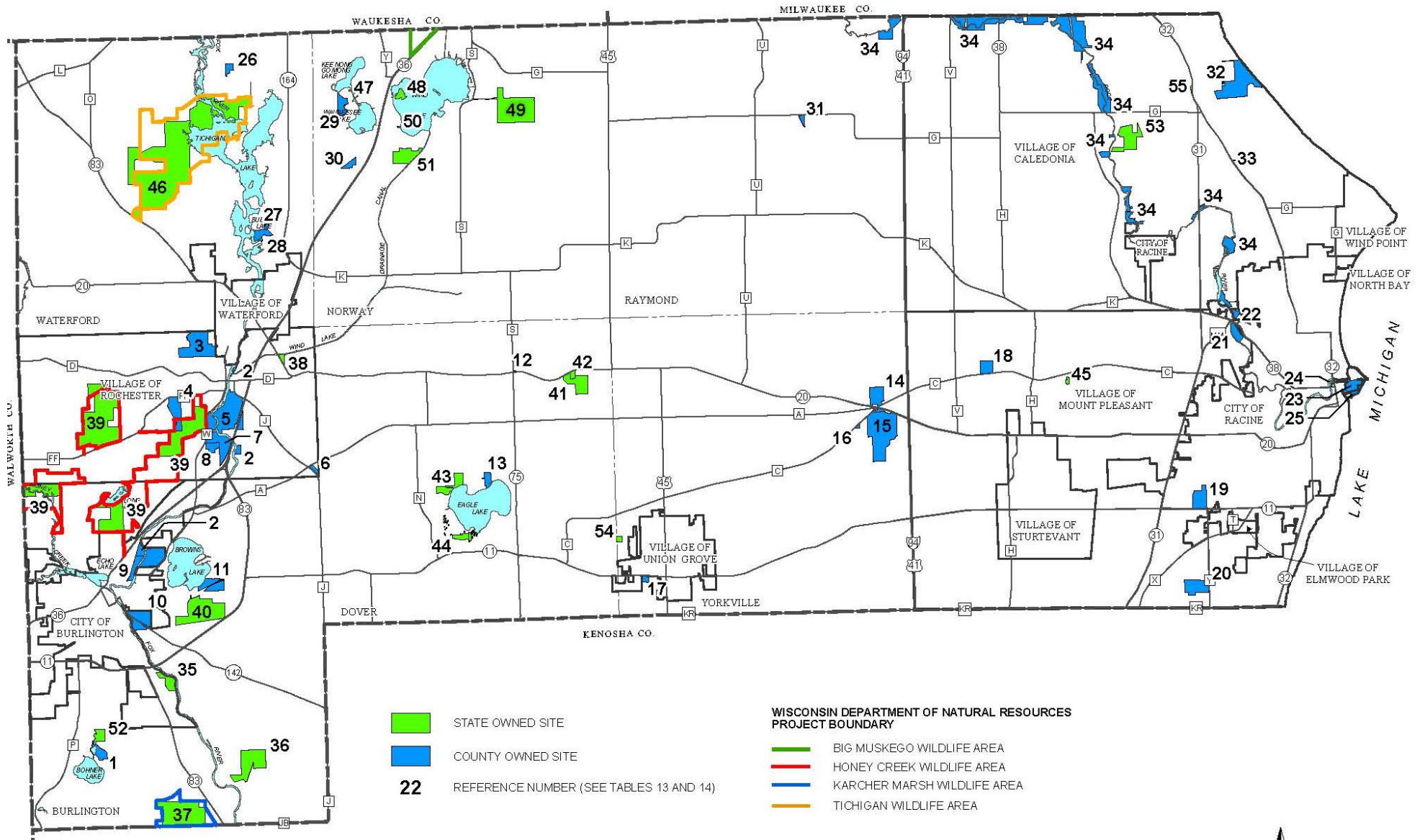


Source: SEWRPC.



Map 15

RACINE COUNTY AND STATE OF WISCONSIN PARK AND OPEN SPACE SITES: 2010



Source: Wisconsin Department of Natural Resources, Racine County, and SEWRPC.