



DISH WIRELESS, LLC. SITE ID:

MWMKE00183A

DISH WIRELESS, LLC. SITE ADDRESS:

**4727 HONEY CREEK ROAD
EAST TROY, WI 53120**

RECEIVED
FEB 01 2022
RACINE COUNTY

SCOPE OF WORK

THIS IS NOT AN ALL INCLUSIVE LIST. CONTRACTOR SHALL UTILIZE SPECIFIED EQUIPMENT PART OR ENGINEER APPROVED EQUIVALENT. CONTRACTOR SHALL VERIFY ALL NEEDED EQUIPMENT TO PROVIDE A FUNCTIONAL SITE. THE PROJECT GENERALLY CONSISTS OF THE FOLLOWING:
TOWER SCOPE OF WORK:

- INSTALL ANTENNA MOUNT(S)
- INSTALL (3) PROPOSED PANEL ANTENNAS (1 PER SECTOR)
- INSTALL (3) PROPOSED ANTENNA MOUNTS (1 PER SECTOR)
- INSTALL PROPOSED JUMPERS
- INSTALL (6) PROPOSED RRU_s (2 PER SECTOR)
- INSTALL (1) PROPOSED OVER VOLTAGE PROTECTION DEVICE (OVP)
- INSTALL (1) PROPOSED HYBRID CABLE (LENGTH: 200'-0")

GROUND SCOPE OF WORK:

- INSTALL (1) PROPOSED METAL PLATFORM
- INSTALL (1) PROPOSED ICE BRIDGE
- INSTALL (1) PROPOSED PPC CABINET
- INSTALL (1) PROPOSED EQUIPMENT CABINET
- INSTALL (1) PROPOSED POWER CONDUIT
- INSTALL (1) PROPOSED TELCO CONDUIT
- INSTALL (1) PROPOSED TELCO-FIBER BOX
- INSTALL (1) PROPOSED GPS UNIT
- INSTALL (1) PROPOSED SAFETY SWITCH (IF REQUIRED)
- INSTALL (1) PROPOSED CIENA BOX (IF REQUIRED)

SITE INFORMATION		PROJECT DIRECTORY	
PROPERTY OWNER:	ARNOLD & JULIE ANN HIMEBAUCH REVOCABLE TRUST	APPLICANT:	DISH WIRELESS, LLC.
ADDRESS:	34217 HILL VALLEY DR EAST TROY, WI 53120		5701 SOUTH SANTA FE DRIVE LITTLETON, CO 80120
TOWER TYPE:	SELF SUPPORT TOWER	TOWER OWNER:	UNITI TOWERS
TOWER CO SITE ID:	WMIL2027		
TOWER APP NUMBER:	TBD		
COUNTY:	RACINE	SITE DESIGNER:	FULLERTON ENGINEERING 1100 E WOODFIELD RD., STE 500 SCHAUMBURG, IL 60173 (847) 908-8400
LATITUDE (NAD 83):	42° 46' 42.9" N 42.778589° N	SITE ACQUISITION:	MEGHAN LANIGAN
LONGITUDE (NAD 83):	88° 17' 34.7" W -88.292984° W	CONSTRUCTION MANAGER:	ANDREW HILGERSON
ZONING JURISDICTION:	VILLAGE OF EAST TROY	RF ENGINEER:	NAVEED SHERWANI
ZONING DISTRICT:	A-1		
PARCEL NUMBER:	016041930002000		
OCCUPANCY GROUP:	U		
CONSTRUCTION TYPE:	II-B		
POWER COMPANY:	WE ENERGIES		
TELEPHONE COMPANY:	TBD		



5701 SOUTH SANTA FE DRIVE
LITTLETON, CO 80120



1100 E. WOODFIELD ROAD, SUITE 500
SCHAUMBURG, ILLINOIS 60173
TEL: 847-908-8400
COA# 3620-11
www.FullertonEngineering.com



IT IS A VIOLATION OF LAW FOR ANY PERSON, UNLESS THEY ARE ACTING UNDER THE DIRECTION OF A LICENSED PROFESSIONAL ENGINEER, TO ALTER THIS DOCUMENT.

DRAWN BY:	CHECKED BY:	APPROVED BY:
ASE	DZ	DS
RFDS REV #:	3	

PERMITTING DOCUMENTS

SUBMITTALS		
REV	DATE	DESCRIPTION
A	12/30/2021	ISSUED FOR REVIEW
0	01/13/2022	ISSUED FOR PERMITTING

A&E PROJECT NUMBER
2021.0030.0100

DISH WIRELESS, LLC.
PROJECT INFORMATION
MWMKE00183A
**4727 HONEY CREEK ROAD
EAST TROY, WI 53120**

SHEET TITLE
TITLE SHEET

SHEET NUMBER
T-1

WISCONSIN CODE COMPLIANCE

ALL WORK SHALL BE PERFORMED AND MATERIALS INSTALLED IN ACCORDANCE WITH THE CURRENT EDITIONS OF THE FOLLOWING CODES AS ADOPTED BY THE LOCAL GOVERNING AUTHORITIES. NOTHING IN THESE PLANS IS TO BE CONSTRUED TO PERMIT WORK NOT CONFORMING TO THESE CODES:

CODE TYPE	CODE
BUILDING	WISCONSIN CBC/2015 IBC W/ WI AMENDMENTS
MECHANICAL	WISCONSIN CBC/2015 IMC W/ WI AMENDMENTS
ELECTRICAL	WISCONSIN ELECTRICAL CODE/2017 NEC W/ WI AMENDMENTS

SHEET INDEX

SHEET NO.	SHEET TITLE
T-1	TITLE SHEET
A-1	OVERALL AND ENLARGED SITE PLAN
A-2	ELEVATION, ANTENNA LAYOUT AND SCHEDULE
A-3	EQUIPMENT PLATFORM AND H-FRAME DETAILS
A-4	EQUIPMENT DETAILS
A-5	EQUIPMENT DETAILS
A-6	EQUIPMENT DETAILS
E-1	ELECTRICAL/FIBER ROUTE PLAN AND NOTES
E-2	ELECTRICAL DETAILS
E-3	ELECTRICAL ONE-LINE, FAULT CALCS, & PANEL SCHEDULE
G-1	GROUNDING PLANS AND NOTES
G-2	GROUNDING DETAILS
G-3	GROUNDING DETAILS
RF-1	RF CABLE COLOR CODE
GN-1	LEGEND AND ABBREVIATIONS
GN-2	RF SIGNAGE
GN-3	GENERAL NOTES
GN-4	GENERAL NOTES
GN-5	GENERAL NOTES

SITE PHOTO



DIRECTIONS

DIRECTIONS FROM GALT AIRPORT:
CONTINUE TO GREENWOOD RD, CONTINUE ON GREENWOOD RD. TAKE US-12 W, WI-120 N AND CO HWY D/CO RD D TO HONEY CREEK RD IN WATERFORD, TURN LEFT ONTO HONEY CREEK RD.

VICINITY MAP



UNDERGROUND SERVICE ALERT - DIGGERS HOTLINE
UTILITY NOTIFICATION CENTER OF WISCONSIN
(800) 242-8511
WWW.DIGGERSHOTLINE.COM
CALL 3 WORKING DAYS UTILITY NOTIFICATION PRIOR TO CONSTRUCTION



GENERAL NOTES

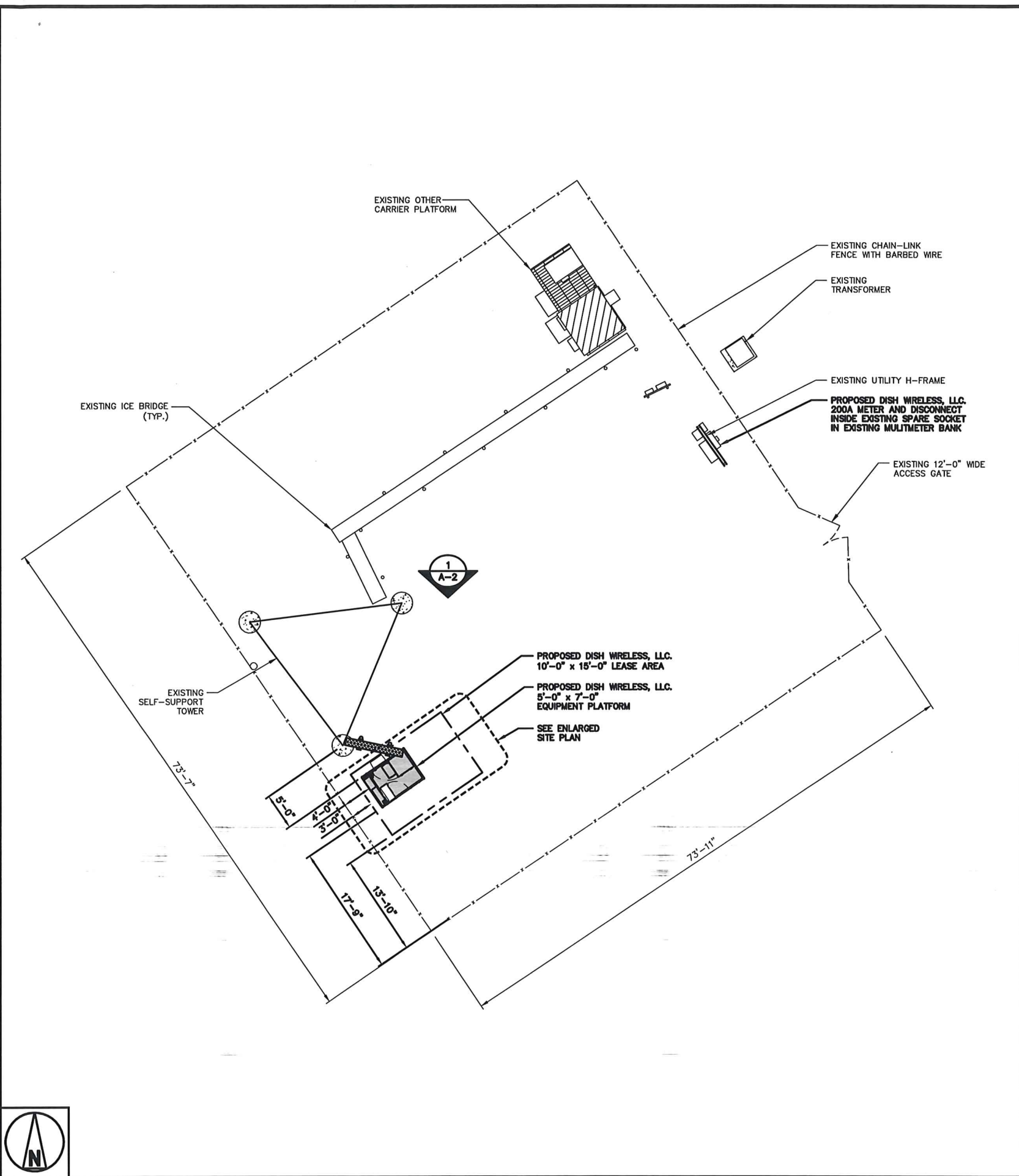
THE FACILITY IS UNMANNED AND NOT FOR HUMAN HABITATION. A TECHNICIAN WILL VISIT THE SITE AS REQUIRED FOR ROUTINE MAINTENANCE. THE PROJECT WILL NOT RESULT IN ANY SIGNIFICANT DISTURBANCE OR EFFECT ON DRAINAGE. NO SANITARY SEWER SERVICE, POTABLE WATER, OR TRASH DISPOSAL IS REQUIRED AND NO COMMERCIAL SIGNAGE IS PROPOSED.

11"x17" PLOT WILL BE HALF SCALE UNLESS OTHERWISE NOTED

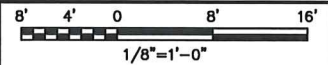
CONTRACTOR SHALL VERIFY ALL PLANS, EXISTING DIMENSIONS, AND CONDITIONS ON THE JOB SITE, AND SHALL IMMEDIATELY NOTIFY THE ENGINEER IN WRITING OF ANY DISCREPANCIES BEFORE PROCEEDING WITH THE WORK.



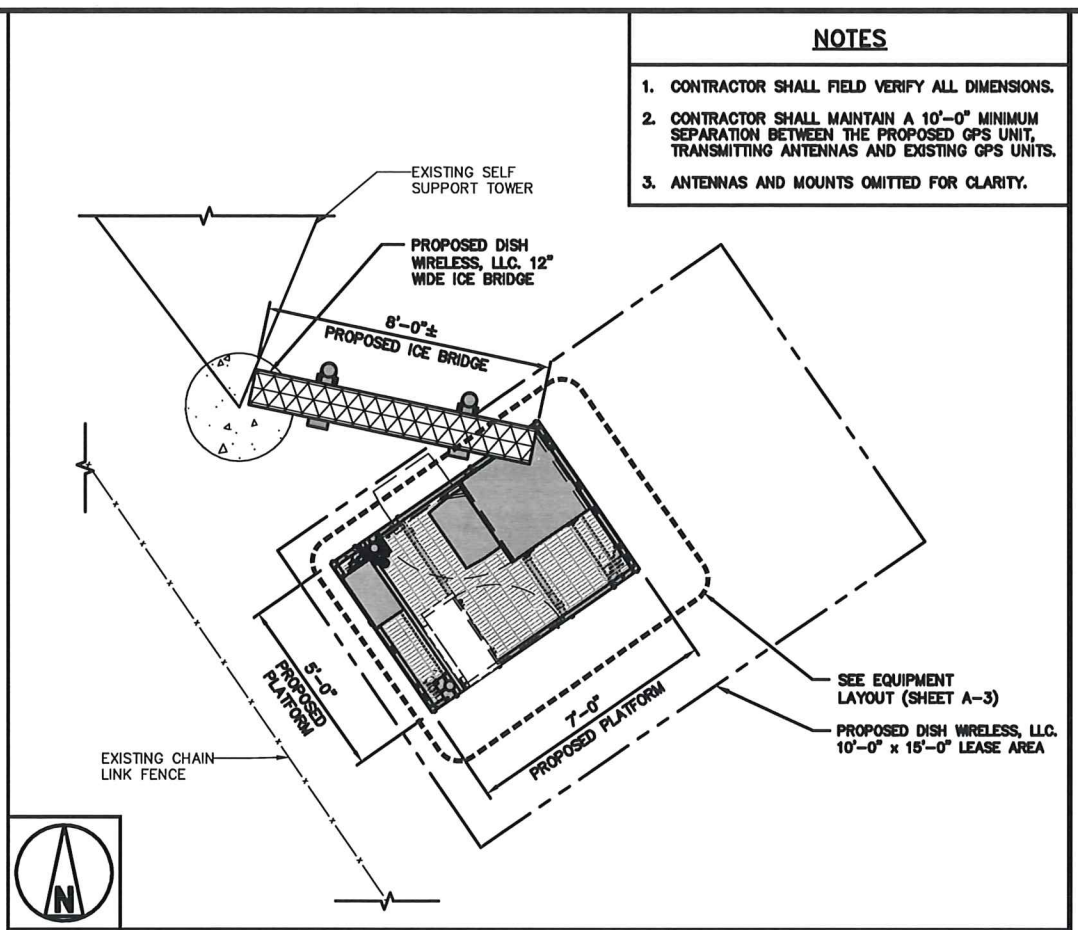
NO SCALE



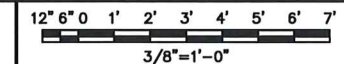
SITE PLAN



1



ENLARGED SITE PLAN



2

- NOTES**
1. CONTRACTOR SHALL FIELD VERIFY ALL DIMENSIONS.
 2. CONTRACTOR SHALL MAINTAIN A 10'-0" MINIMUM SEPARATION BETWEEN THE PROPOSED GPS UNIT, TRANSMITTING ANTENNAS AND EXISTING GPS UNITS.
 3. ANTENNAS AND MOUNTS OMITTED FOR CLARITY.

IT IS A VIOLATION OF LAW FOR ANY PERSON, UNLESS THEY ARE ACTING UNDER THE DIRECTION OF A LICENSED PROFESSIONAL ENGINEER, TO ALTER THIS DOCUMENT.		
DRAWN BY:	CHECKED BY:	APPROVED BY:
ASE	DZ	DS
RFDS REV #:	3	
PERMITTING DOCUMENTS		
SUBMITTALS		
REV	DATE	DESCRIPTION
A	12/30/2021	ISSUED FOR REVIEW
0	01/13/2022	ISSUED FOR PERMITTING
A&E PROJECT NUMBER 2021.0030.0100		
DISH WIRELESS, LLC. PROJECT INFORMATION MWMKE00183A 4727 HONEY CREEK ROAD EAST TROY, WI 53120		
SHEET TITLE OVERALL AND ENLARGED SITE PLAN		
SHEET NUMBER A-1		

NOT USED

NO SCALE

3



5701 SOUTH SANTA FE DRIVE
LITTLETON, CO 80120



1100 E. WOODFIELD ROAD, SUITE 500
SCHAUMBURG, ILLINOIS 60173
TEL: 847-908-8400
COA# 3620-11
www.FullertonEngineering.com



IT IS A VIOLATION OF LAW FOR ANY PERSON, UNLESS THEY ARE ACTING UNDER THE DIRECTION OF A LICENSED PROFESSIONAL ENGINEER, TO ALTER THIS DOCUMENT.

DRAWN BY: CHECKED BY: APPROVED BY:
ASE DZ DS

RFDS REV #: 3

PERMITTING DOCUMENTS

SUBMITTALS		
REV	DATE	DESCRIPTION
A	12/30/2021	ISSUED FOR REVIEW
0	01/13/2022	ISSUED FOR PERMITTING

A&E PROJECT NUMBER
2021.0030.0100

DISH WIRELESS, LLC.
PROJECT INFORMATION

MWMKE00183A
4727 HONEY CREEK ROAD
EAST TROY, WI 53120

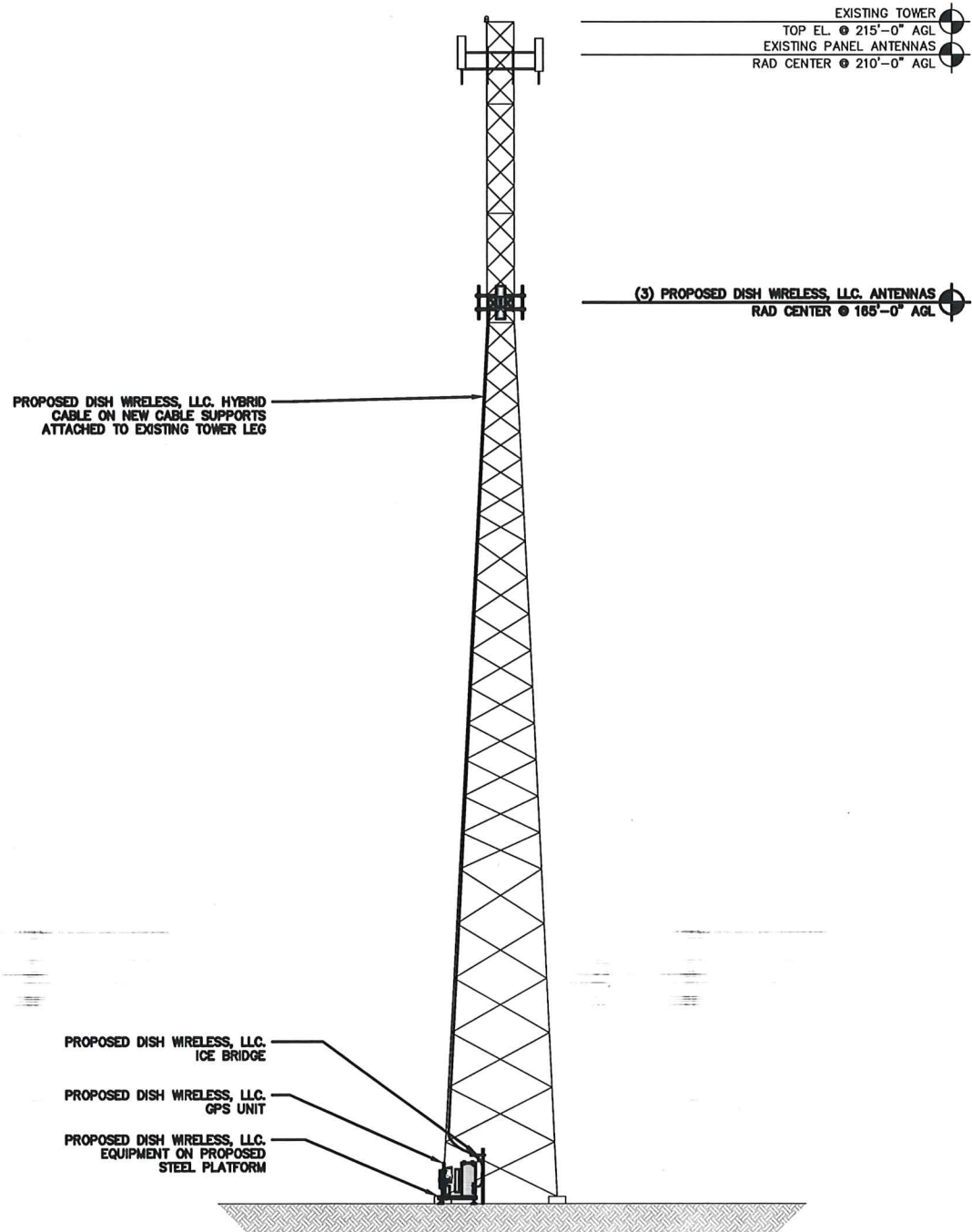
SHEET TITLE
OVERALL AND ENLARGED
SITE PLAN

SHEET NUMBER

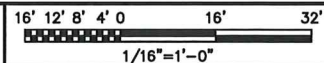
A-1

NOTES

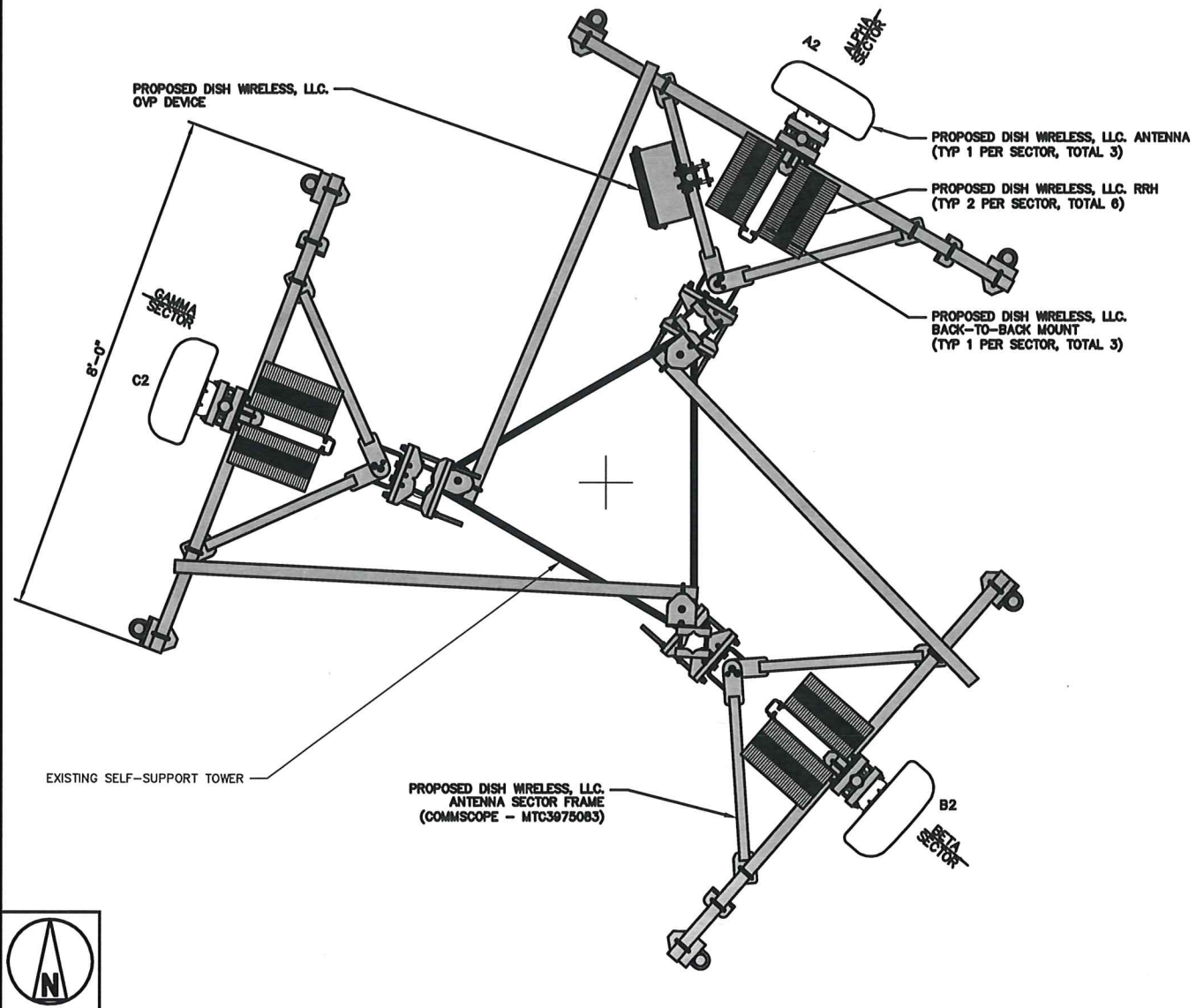
1. CONTRACTOR SHALL FIELD VERIFY ALL DIMENSIONS.
2. ANTENNA AND MW DISH SPECIFICATIONS REFER TO ANTENNA SCHEDULE AND TO FINAL CONSTRUCTION RFDS FOR ALL RF DETAILS
3. EXISTING EQUIPMENT AND FENCE OMITTED FOR CLARITY.



PROPOSED SOUTH ELEVATION



1



ANTENNA LAYOUT

2

SECTOR	POSITION	ANTENNA						TRANSMISSION CABLE
		EXISTING OR PROPOSED	MANUFACTURER - MODEL NUMBER	TECHNOLOGY	SIZE (HxW)	AZIMUTH	RAD CENTER	
ALPHA	A2	PROPOSED	JMA - MX08FRO665-21	5G	72.0" x 20.0"	30	165°-0"	(1) HIGH-CAPACITY HYBRID CABLE (200' LONG)
BETA	B2	PROPOSED	JMA - MX08FRO665-21	5G	72.0" x 20.0"	130	165°-0"	
GAMMA	C2	PROPOSED	JMA - MX08FRO665-21	5G	72.0" x 20.0"	290	165°-0"	
SECTOR	POSITION	RRH		NOTES				
		MANUFACTURER - MODEL NUMBER	TECHNOLOGY					
ALPHA	A2	FUJITSU - TA08025-B804	5G	1. CONTRACTOR TO REFER TO FINAL CONSTRUCTION RFDS FOR ALL RF DETAILS. 2. ANTENNA AND RRH MODELS MAY CHANGE DUE TO EQUIPMENT AVAILABILITY. ALL EQUIPMENT CHANGES MUST BE APPROVED AND REMAIN IN COMPLIANCE WITH THE PROPOSED DESIGN AND STRUCTURAL ANALYSES. 3. VERIFY AZIMUTHS WITH LATEST DISH RFDS PRIOR TO INSTALLATION.				
	A2	FUJITSU - TA08025-B805	5G					
BETA	B2	FUJITSU - TA08025-B804	5G					
	B2	FUJITSU - TA08025-B805	5G					
GAMMA	C2	FUJITSU - TA08025-B804	5G					
	C2	FUJITSU - TA08025-B805	5G					

ANTENNA SCHEDULE

NO SCALE

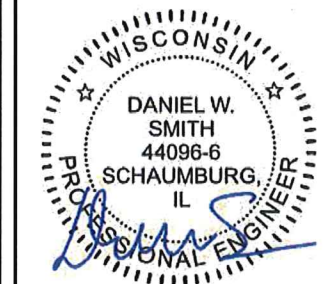
3



5701 SOUTH SANTA FE DRIVE
LITTLETON, CO 80120



1100 E. WOODFIELD ROAD, SUITE 500
SCHAUMBURG, ILLINOIS 60173
TEL: 847-908-8400
COA# 3620-11
www.FullertonEngineering.com



IT IS A VIOLATION OF LAW FOR ANY PERSON, UNLESS THEY ARE ACTING UNDER THE DIRECTION OF A LICENSED PROFESSIONAL ENGINEER, TO ALTER THIS DOCUMENT.

DRAWN BY: CHECKED BY: APPROVED BY:
ASE DZ DS

RFDS REV #: 3

PERMITTING DOCUMENTS

SUBMITTALS		
REV	DATE	DESCRIPTION
A	12/30/2021	ISSUED FOR REVIEW
0	01/13/2022	ISSUED FOR PERMITTING

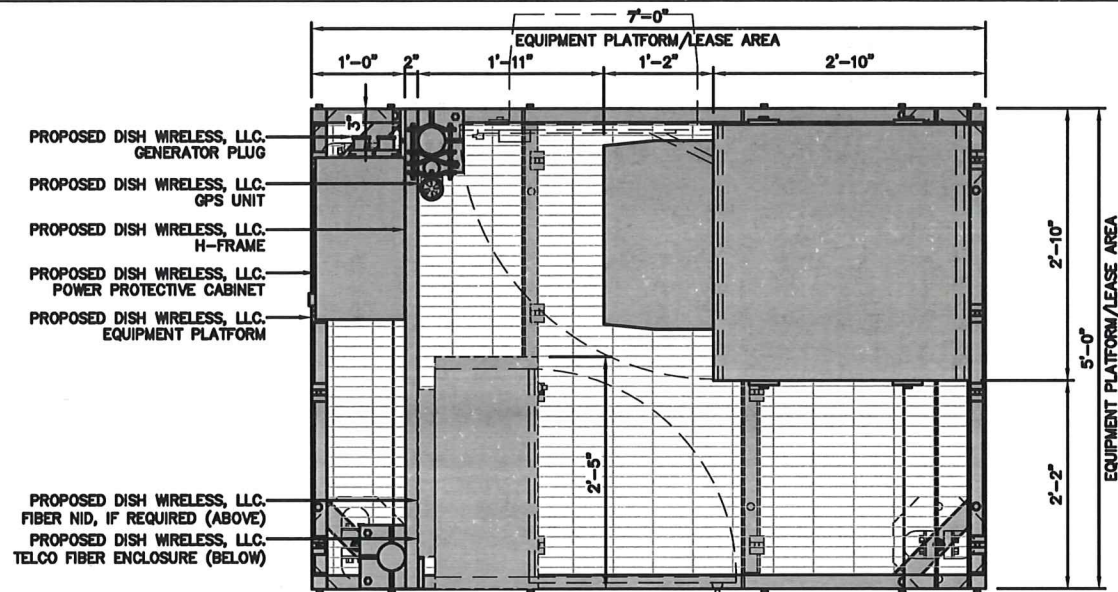
A&E PROJECT NUMBER
2021.0030.0100

DISH WIRELESS, LLC.
PROJECT INFORMATION
MWMKE00183A
4727 HONEY CREEK ROAD
EAST TROY, WI 53120

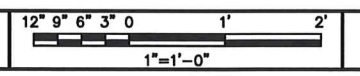
SHEET TITLE
ELEVATION, ANTENNA
LAYOUT AND SCHEDULE

SHEET NUMBER

A-2

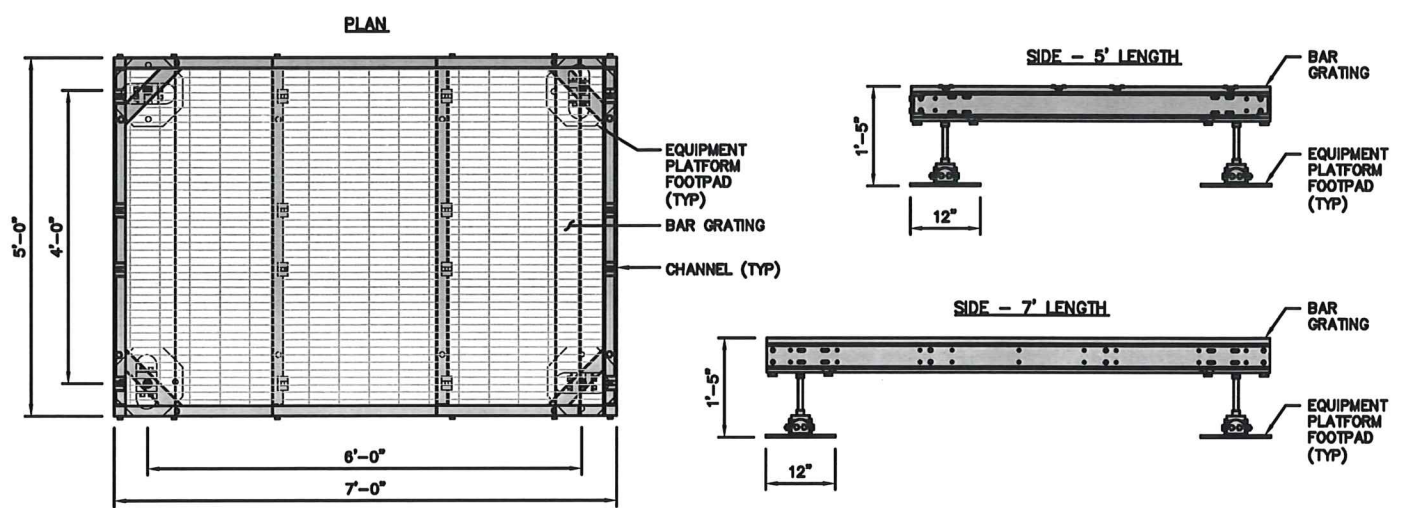


PLATFORM EQUIPMENT PLAN



1

COMMSCOPE MTC4045LP 5X7 PLATFORM	
DIMENSIONS (HxWxD)	16"x84"x60"
TOTAL WEIGHT	423 LBS

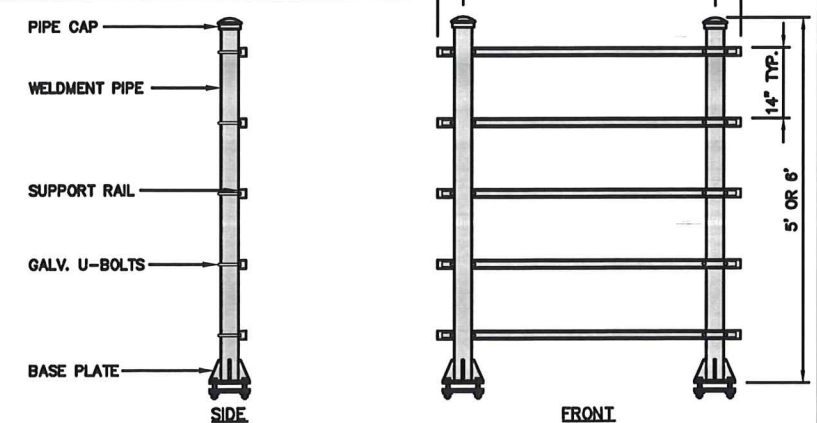


PLATFORM DETAIL

NO SCALE 2

COMMSCOPE MTC4045HFLD H-FRAME	
UNISTRUT/SUPPORT RAILS QTY	5
WEIGHT	59.74 lbs

NOTE:
OR DISH Wireless L.L.C.
APPROVED EQUIVALENT



H-FRAME DETAIL

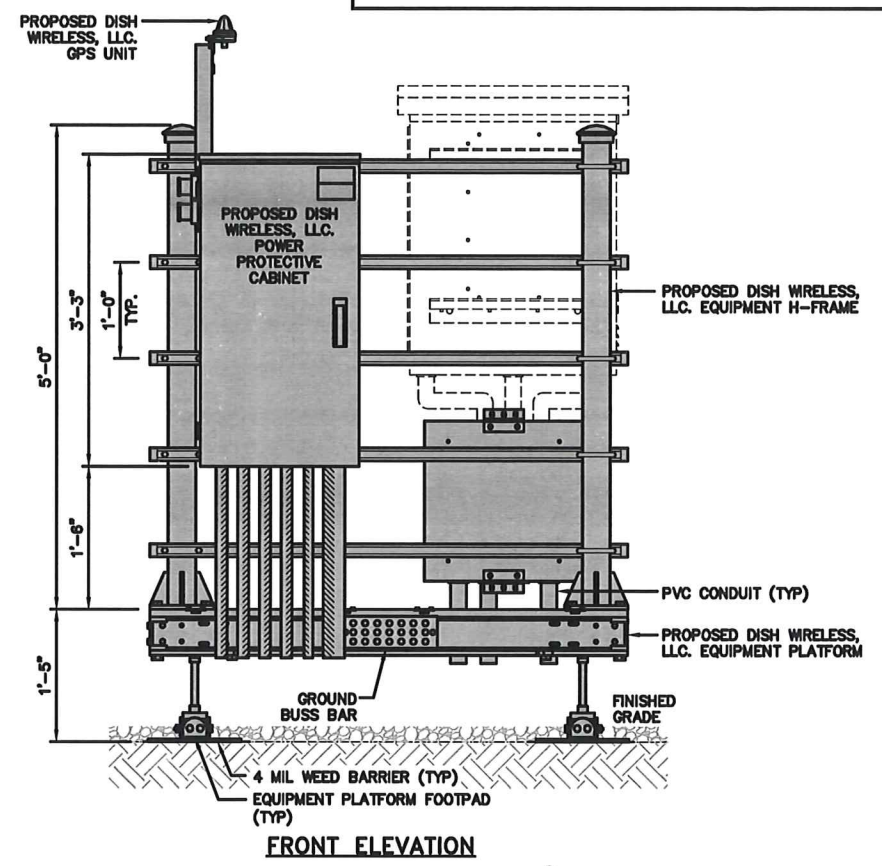
NO SCALE 3

NOT USED

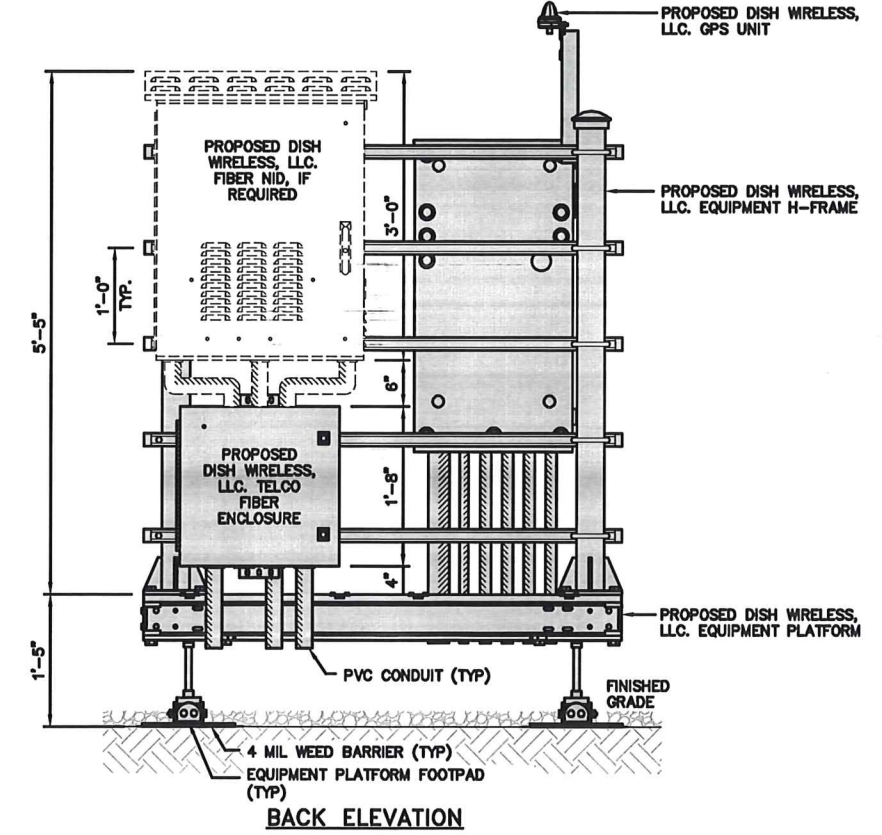
NO SCALE 4

NOTES

- CONTRACTOR TO BURY PLATFORM FEET WITH A MINIMUM OF 2" OF FILL PER EXISTING SITE SURFACE.
- WEED BARRIER FABRIC TO BE ADDED AT DISCRETION OF DISH WIRELESS, LLC. CONSTRUCTION MANAGER AT TIME OF CONSTRUCTION. ONE SHEET 8'x8' INSTALLED UNDER ALL FOUR FEET OF THE PLATFORM (4 MIL BLACK PLASTIC).
- EQUIPMENT CABINET OMITTED FOR CLARITY.

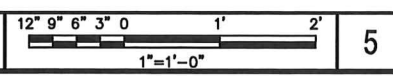


FRONT ELEVATION



BACK ELEVATION

H-FRAME EQUIPMENT ELEVATION



5



5701 SOUTH SANTA FE DRIVE
LITTLETON, CO 80120



1100 E. WOODFIELD ROAD, SUITE 500
SCHAUMBURG, ILLINOIS 60173
TEL: 847-908-8400
COA# 3620-11
www.FullertonEngineering.com



IT IS A VIOLATION OF LAW FOR ANY PERSON, UNLESS THEY ARE ACTING UNDER THE DIRECTION OF A LICENSED PROFESSIONAL ENGINEER, TO ALTER THIS DOCUMENT.

DRAWN BY:	CHECKED BY:	APPROVED BY:
ASE	DZ	DS

RFDS REV #: 3

PERMITTING DOCUMENTS

SUBMITTALS		
REV	DATE	DESCRIPTION
A	12/30/2021	ISSUED FOR REVIEW
0	01/13/2022	ISSUED FOR PERMITTING

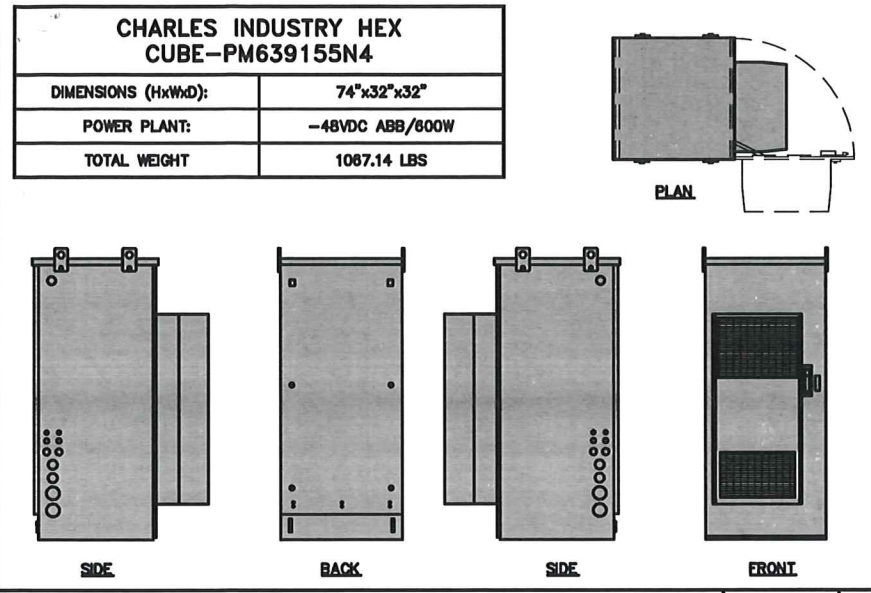
A&E PROJECT NUMBER
2021.0030.0100

DISH WIRELESS, LLC.
PROJECT INFORMATION
MWMKE00183A
4727 HONEY CREEK ROAD
EAST TROY, WI 53120

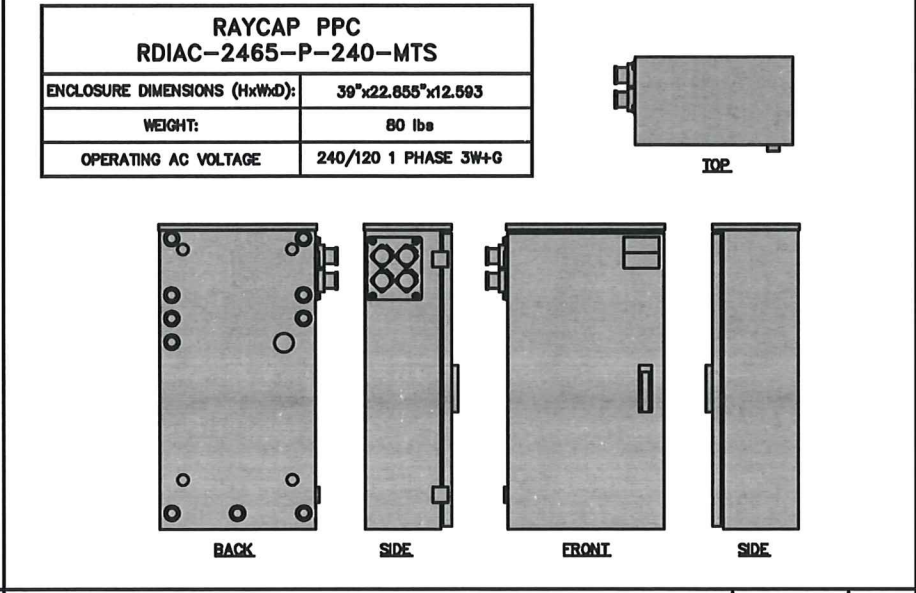
SHEET TITLE
EQUIPMENT PLATFORM AND
H-FRAME DETAILS

SHEET NUMBER

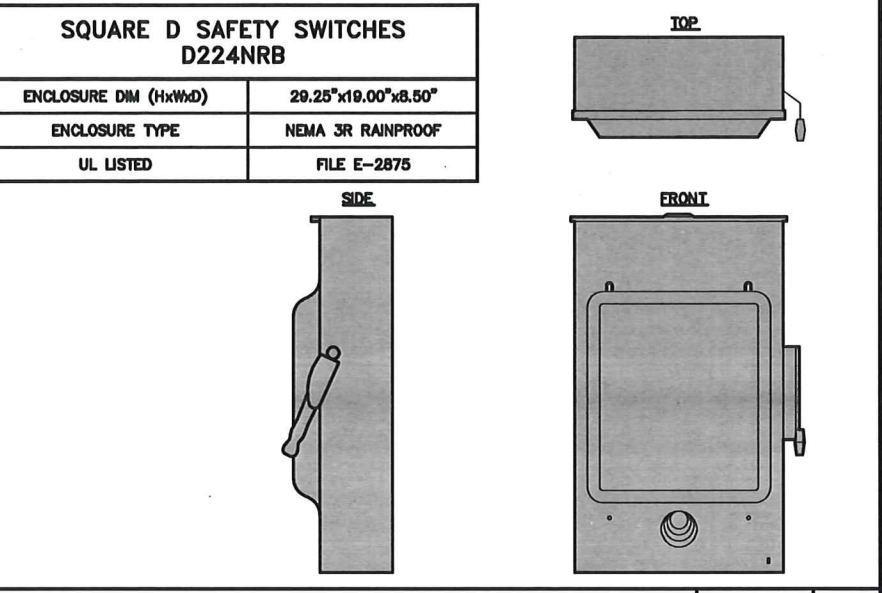
A-3



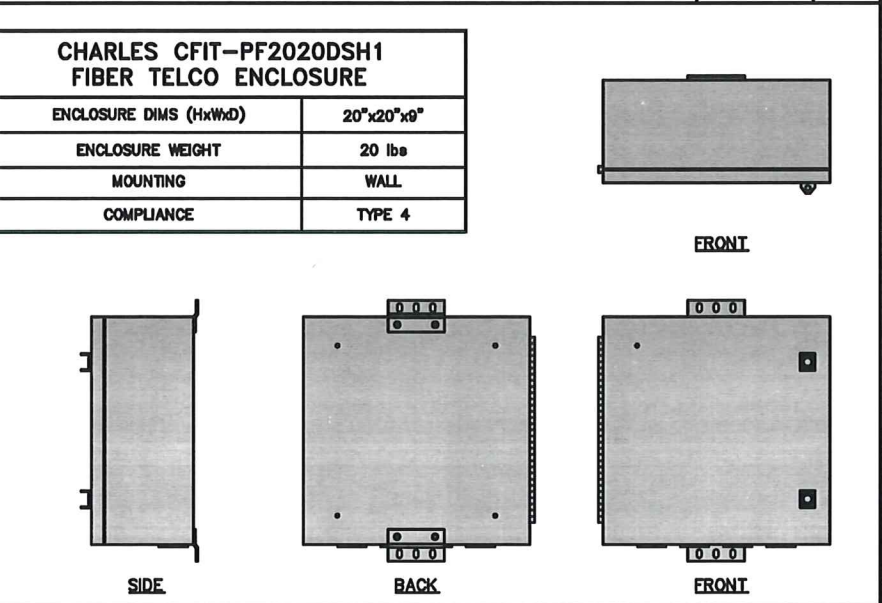
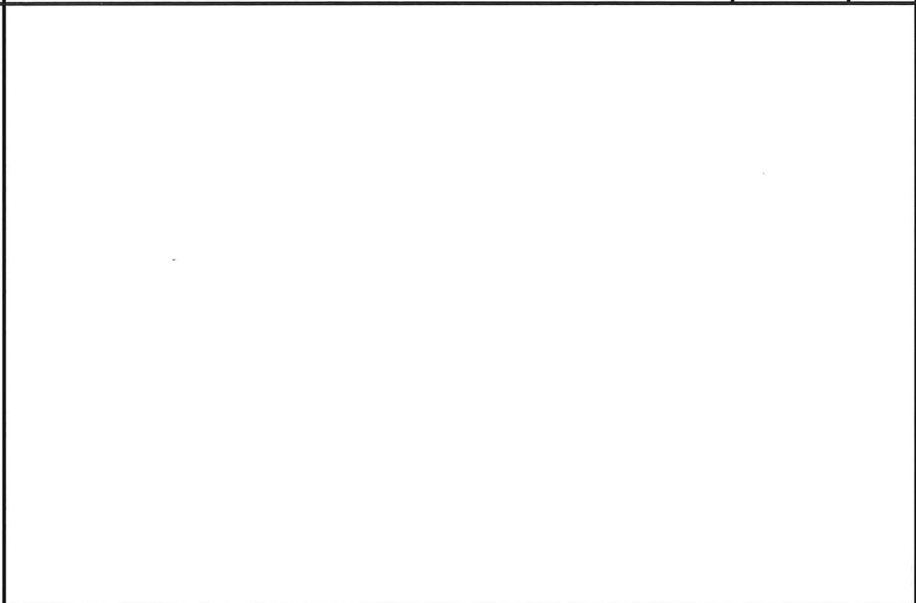
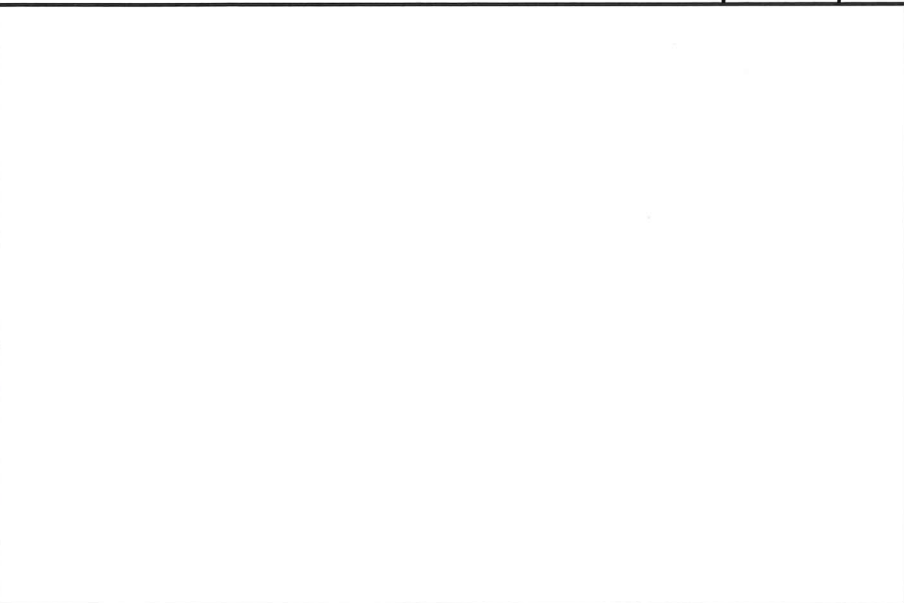
CABINET DETAIL NO SCALE 1



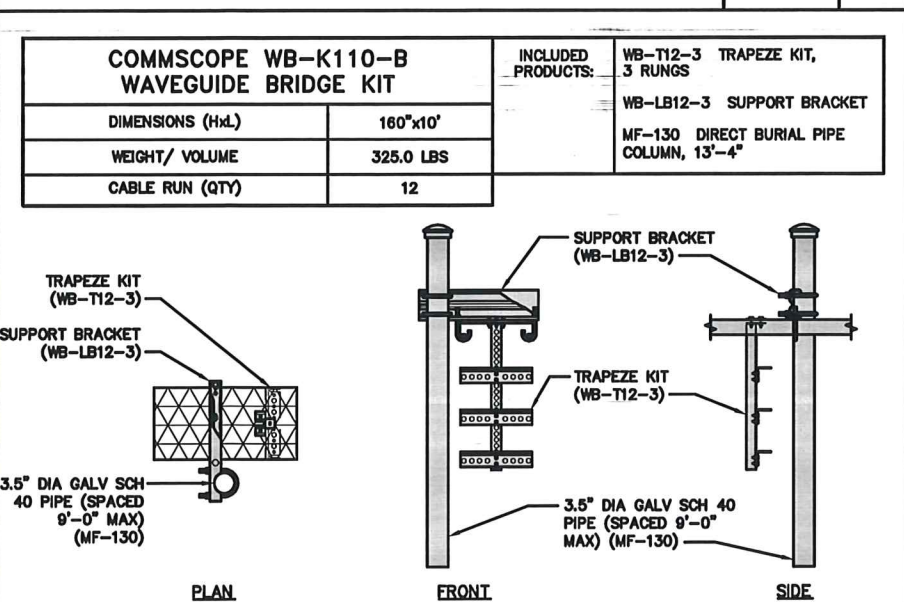
POWER PROTECTION CABINET (PPC) DETAIL NO SCALE 2



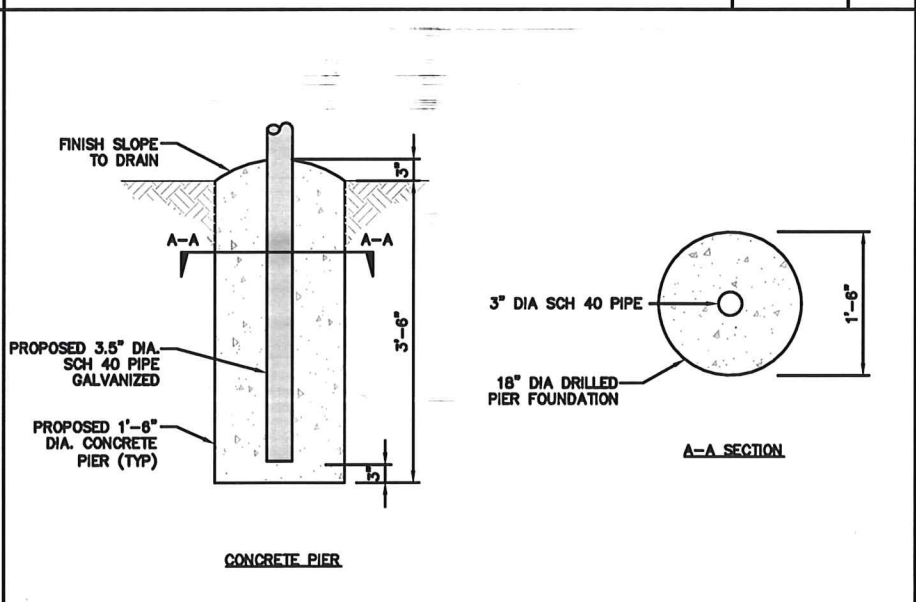
SAFETY SWITCH DETAIL (IF REQUIRED) NO SCALE 3



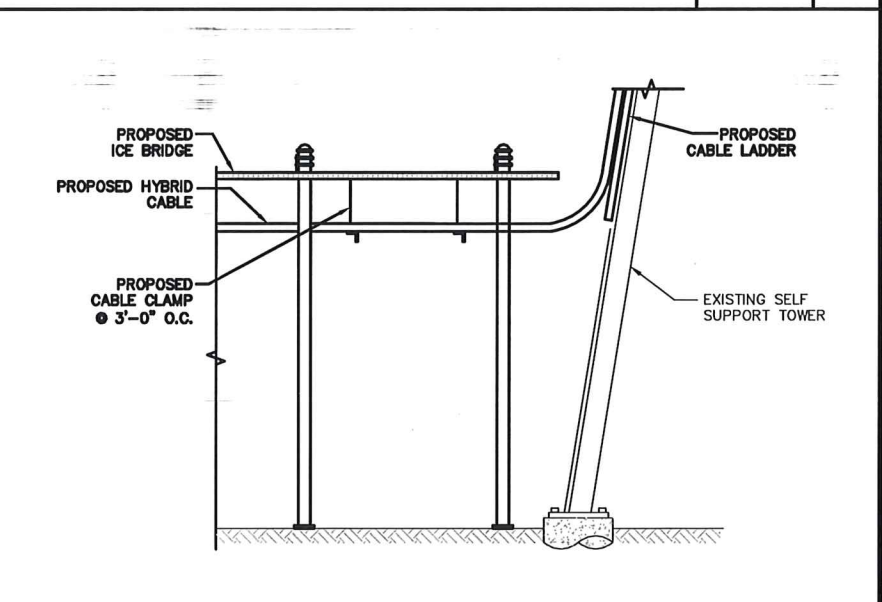
FIBER TELCO ENCLOSURE DETAIL NO SCALE 6



ICE BRIDGE DETAIL NO SCALE 7



TYPICAL ICE BRIDGE CONCRETE PIER DETAIL NO SCALE 8



HYBRID CABLE RUN NO SCALE 9



5701 SOUTH SANTA FE DRIVE
LITTLETON, CO 80120



1100 E. WOODFIELD ROAD, SUITE 500
SCHAUMBURG, ILLINOIS 60173
TEL: 847-908-8400
COA# 3620-11
www.FullertonEngineering.com



IT IS A VIOLATION OF LAW FOR ANY PERSON, UNLESS THEY ARE ACTING UNDER THE DIRECTION OF A LICENSED PROFESSIONAL ENGINEER, TO ALTER THIS DOCUMENT.

DRAWN BY: ASE CHECKED BY: DZ APPROVED BY: DS

RFDS REV #: 3

PERMITTING DOCUMENTS

SUBMITTALS		
REV	DATE	DESCRIPTION
A	12/30/2021	ISSUED FOR REVIEW
0	01/13/2022	ISSUED FOR PERMITTING

A&E PROJECT NUMBER
2021.0030.0100

DISH WIRELESS, LLC.
PROJECT INFORMATION

MWMKE00183A
4727 HONEY CREEK ROAD
EAST TROY, WI 53120

SHEET TITLE
EQUIPMENT DETAILS

SHEET NUMBER
A-4