

Fii Projects Status Update

High Performance Computing Data Center (HPCDC)

March 2021





HPCDC CONSTRUCTION STATUS UPDATE

- ▶ Complete drywall installation and paint on all levels
- ▶ Continue start-up and testing of mechanical equipment
- ▶ Complete installation of moss wall
- ▶ Complete installation of polished concrete in Lower Level and Level 3
- ▶ Begin painting center core and monument stairs
- ▶ Begin installation of glass roof at front vestibule
- ▶ Complete installation of hard tile in kitchen and lobby areas
- ▶ Complete installation of interior building signage



▶▶ HPCDC SITE PHOTOS



Complete drywall, painting and flooring installation on Level 3



Complete drywall, painting and flooring installation in Network Operation Center (NOC) on Level 2

▶▶ HPCDC SITE PHOTOS



Complete installation of interior signage throughout the building



Complete installation of toilet partitions and accessories in restrooms throughout the building

▶▶ HPCDC SITE PHOTOS

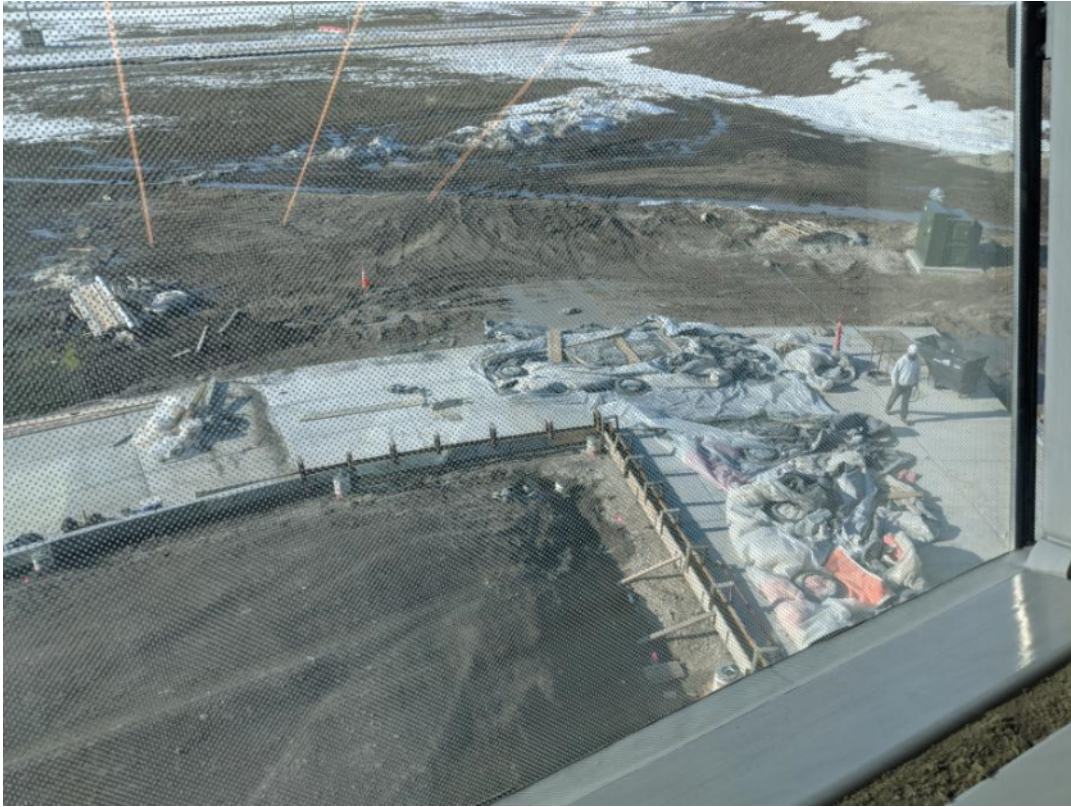


Complete tile and countertop installation in pantry and lobby areas throughout building



Complete tile and countertop installation in pantry and lobby areas throughout building

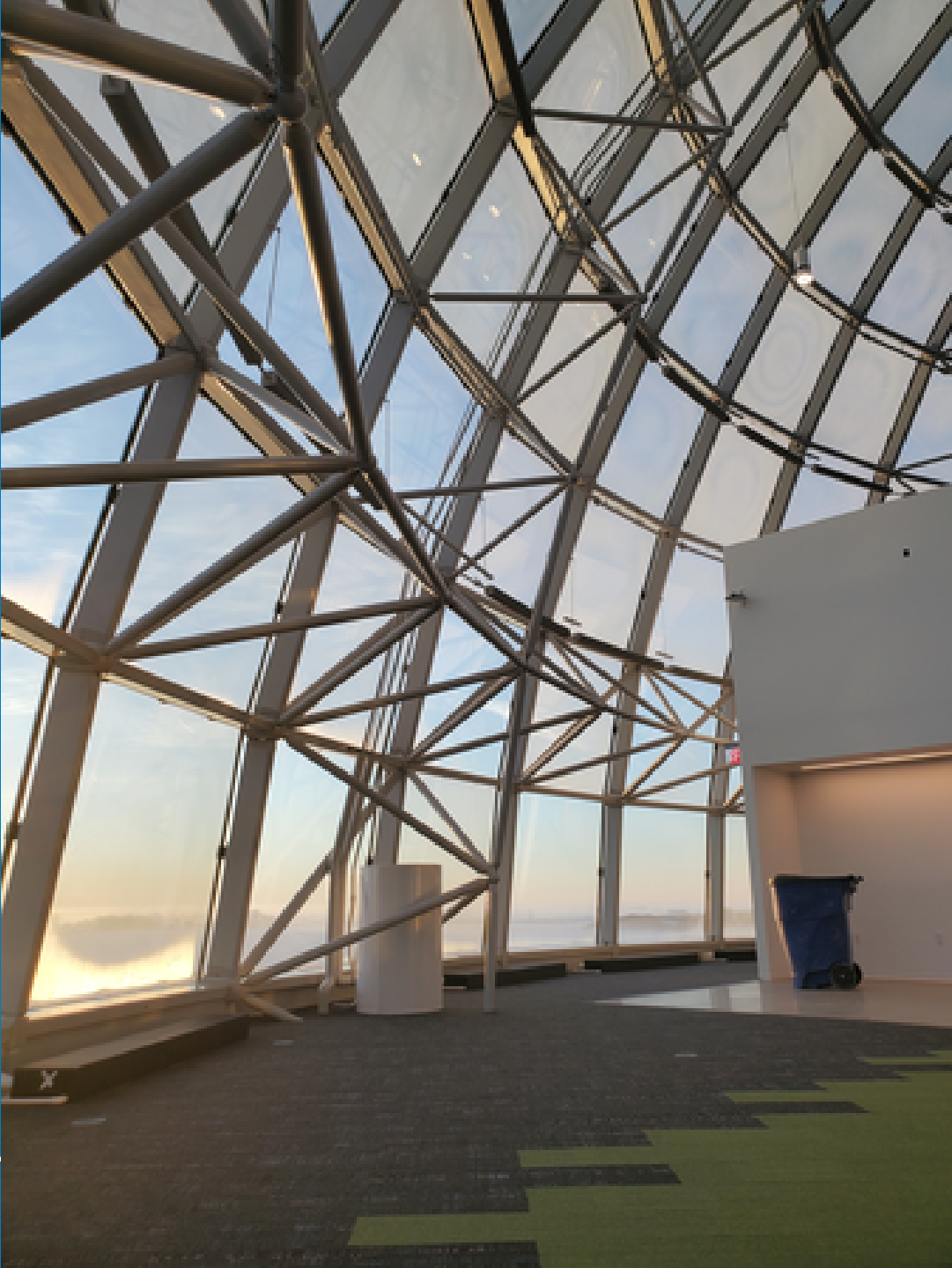
▶▶ HPCDC SITE PHOTOS



Begin paving of external egress pathway around the building



Completion of Level 3 concrete floor polishing



WHAT TO EXPECT IN MARCH



Substantial Completion: March 12, 2021



Complete egress path around building



Complete mechanical start-up and testing



Complete polished concrete on Level 1



Owner to begin furniture and TV installation



WISCONSIN FIRST AND RACINE COUNTY ECONOMIC INCLUSION & DIVERSITY RESULTS

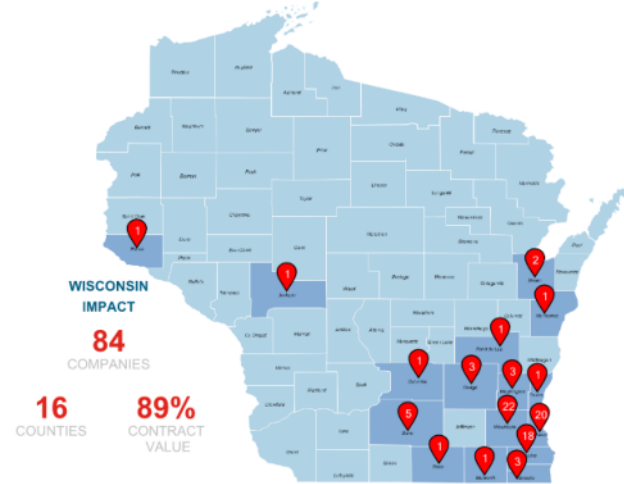
Business Contracting and Inclusion Goals

Wisconsin based Businesses	60%
Racine County based Businesses	10%
Minority-Owned (MBE) Business Enterprises	10% Combined
Woman-Owned (WBE) Enterprises	
Veteran-Owned Business Enterprises	

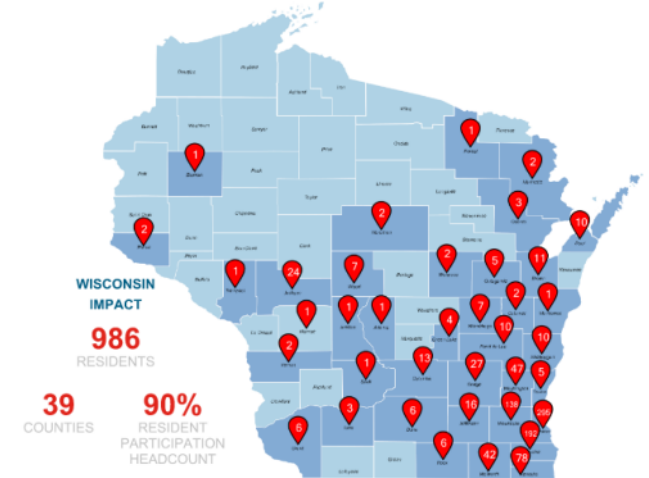
Workforce Inclusion and Diversity Goals

Wisconsin Resident Work Hours with an emphasis on Racine County Residents	70%
Minorities or People of Color*	10% Combined
Women	
Veterans	

WISCONSIN FIRST **Business Inclusion** (as of 02/28/2021*)
Participating Fii Projects - SMC & HPCDC



WISCONSIN FIRST **Resident Inclusion** (as of 02/28/2021*)
Participating Fii Projects - SMC & HPCDC



An aerial photograph of a large industrial building under construction. The building has a flat roof with several HVAC units and is surrounded by a parking lot and landscaped areas. In the background, there are fields, trees, and a few wind turbines. A white rectangular box is overlaid on the center of the image, containing the text "LET'S REDEFINE POSSIBLE" in a bold, green, sans-serif font.

LET'S REDEFINE POSSIBLE