

# Fii Projects Status Update

High Performance Computing Data Center (HPCDC)

February 2021



FOXCONN®





# HPCDC CONSTRUCTION STATUS UPDATE

- ▶ Completed drywall installation on Levels 1 and 3
- ▶ Completed paint throughout Level 2
- ▶ Continue installation of ceiling grid and baffled ceilings throughout the building
- ▶ Finish and complete storefront systems installation on Level 2
- ▶ Begin start-up of mechanical equipment
- ▶ Complete installation of the curtain wall at the front vestibule
- ▶ Completed restroom tiling in the second-floor restrooms

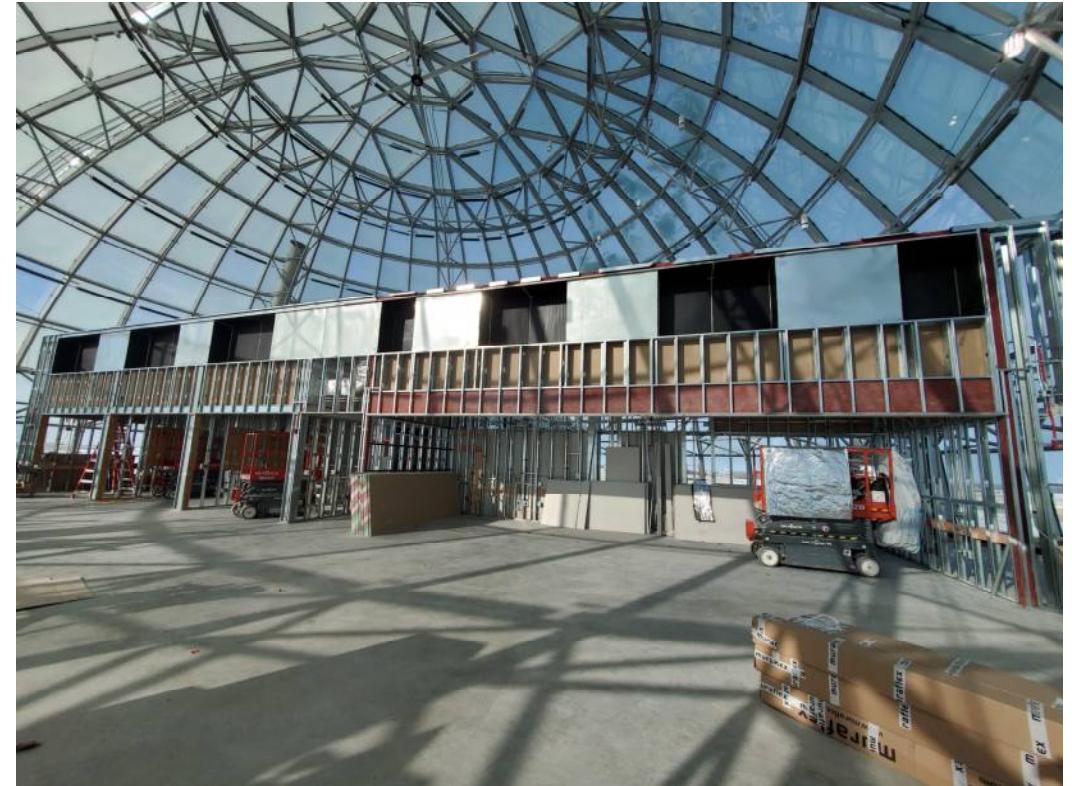




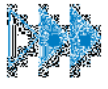
# HPCDC SITE PHOTOS



Begin painting and glazing installation of monument stair enclosure on Level 3



Continue framing and drywall installation of offices on Level 3



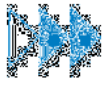
# HPCDC SITE PHOTOS



Continue painting and baffled ceiling installation  
in Level 2 Board Room



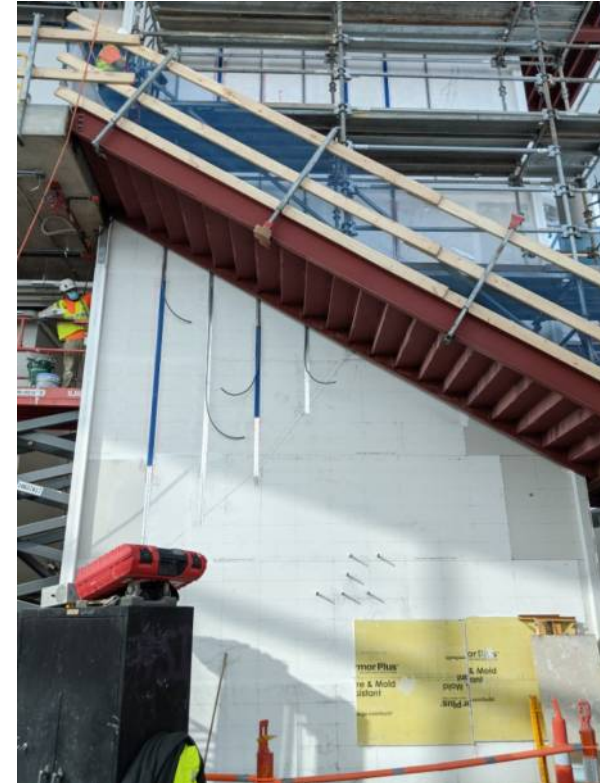
Complete paint and glass  
installation in Network Operation  
Center (NOC) on Level 2



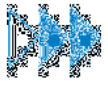
# HPCDC SITE PHOTOS



Complete tile installation and begin installation of toilet specialties in Level 2 restrooms



Begin installation of light fixtures at monument stairs and green wall



# HPCDC SITE PHOTOS



Begin painting and complete lighting installation in Lobby in Lower Level



Begin painting in 5G R&D Room in Lower Level



# WHAT TO EXPECT IN FEBRUARY



Remove Level 3 landing platform



Complete remaining glass infill



Remove temporary power



Begin green wall installation



Continue mechanical system start-up



Begin installation of carpet tiles and polished concrete



Continue painting on Level 3

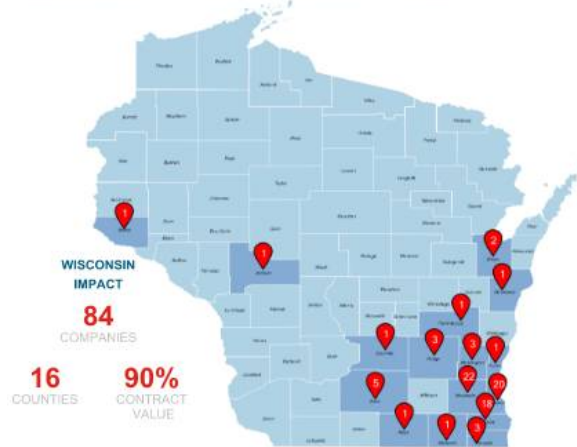


# WISCONSIN FIRST AND RACINE COUNTY ECONOMIC INCLUSION & DIVERSITY RESULTS

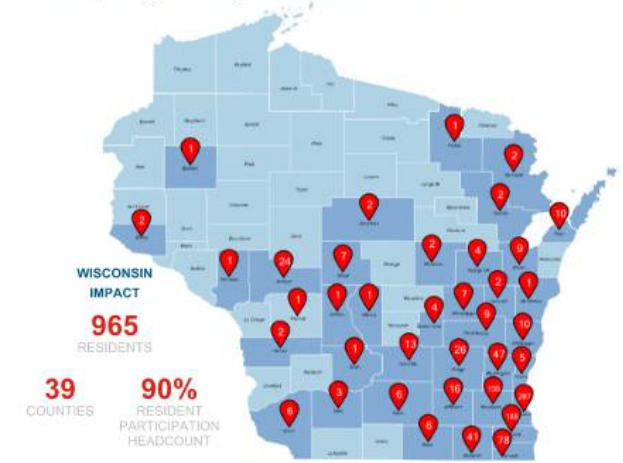
Business Contracting and Inclusion Goals	
Wisconsin based Businesses	60%
Racine County based Businesses	10%
Minority-Owned (MBE) Business Enterprises	10% Combined
Woman-Owned (WBE) Enterprises	
Veteran-Owned Business Enterprises	

Workforce Inclusion and Diversity Goals	
Wisconsin Resident Work Hours with an emphasis on Racine County Residents	70%
Minorities or People of Color*	10% Combined
Women	
Veterans	

WISCONSIN FIRST **Business Inclusion** (as of 01/31/2021\*)  
Participating Fii Projects - SMC & HPCDC



WISCONSIN FIRST **Resident Inclusion** (as of 01/31/2021\*)  
Participating Fii Projects - SMC & HPCDC







**LET'S REDEFINE POSSIBLE**

# Construction Status Update

- All SIO contracted construction is complete
- All areas that had been under G|E's control have been turned over to SIO and are under Foxconn management:
  - All Area 1 land including all grounds, basins, gates, roadways & utilities
  - All buildings - MPB, PSS & Fab
- G|E and all G|E subcontractors are demobilized from the Area 1 site.



# Wisconsin First and Racine County Economic Inclusion & Diversity Results — All SIO Projects Combined

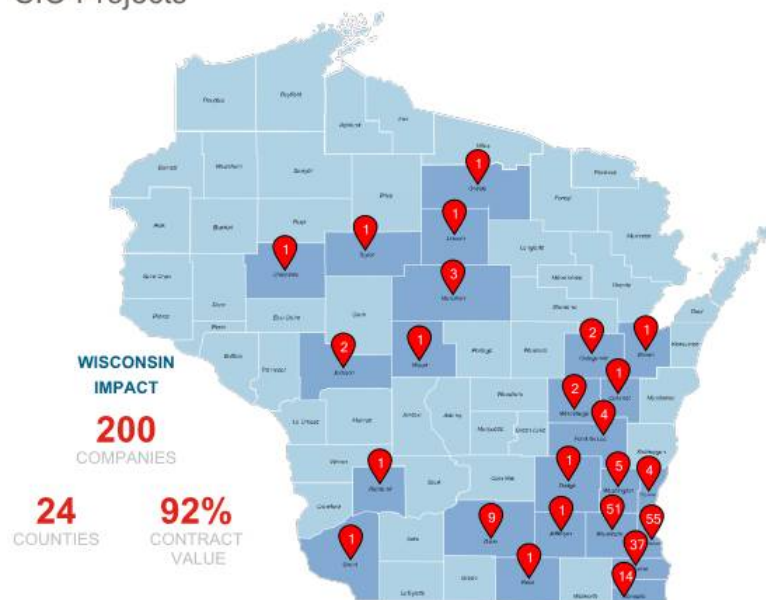
## Business Contracting and Inclusion Goals

Wisconsin based Businesses	60%
Racine County based Businesses	10%
Minority-Owned (MBE) Business Enterprises	10% Combined
Woman-Owned (WBE) Enterprises	
Veteran-Owned Business Enterprises	

## Workforce Inclusion and Diversity Goals

Wisconsin Resident Work Hours with an emphasis on Racine County Residents	70%
Minorities or People of Color*	10% Combined
Women	
Veterans	

WISCONSIN FIRST Business Inclusion (as of 12/31/2020\*)  
SIO Projects



WISCONSIN FIRST Resident Inclusion (as of 12/31/2020\*)  
SIO Projects



Gilbane|Exyte will deploy best efforts through robust outreach, procurement and construction practices to achieve the goals for the construction projects awarded for their work in the Science and Technology Park.

# FOXCONN

## SIO Area 1 Projects



# FOXCONN



# FOXCONN<sup>®</sup>

SMART MANUFACTURING IN WISCONSIN

2020





Pictured: Advanced Manufacturing Facility

---

# TABLE OF CONTENTS

---

## INTRODUCTION

Message from [Chairman & Vice Chairman](#)

## BUSINESS DEVELOPMENT & SERVICES

Stakeholders and Partners  
Business [Industrial AI](#)  
Business [5G Networks](#)  
Business [Data Infrastructure](#)

## WISCONSIN INVESTMENT

Park [Development](#)  
Park [Fact Sheet](#)

## FACILITIES IN THE PARK, AREA 1

MPB [Overview](#)  
868 [Development](#)  
SMC [Development](#)  
HPCDC [Development](#)

## COVID RESPONSE: PROCEDURAL MASKS

## EMPLOYEE APPRECIATION

Happy [2021!](#)

FOXCONN TECHNOLOGY GROUP

## A MESSAGE FROM FOXCONN CHAIRMAN & VICE CHAIRMAN

Over the span of another year, Foxconn has achieved several milestones thanks to the dedication and resolve of our workforce. We are proud that amid global uncertainty and an economic downturn, Foxconn has demonstrated a commitment to making business work in Wisconsin.

Despite challenging circumstances, Foxconn's Wisconsin operation may soon become a top manufacturer of data infrastructure in the United States. As a contract manufacturer, Foxconn has found business opportunities with companies interested in purchasing products made in the United States with supply chain security peace of mind. As this business continues to grow, so too will Wisconsin's reputation for being a manufacturer of data infrastructure. This will stand along-side our state's reputation for being the country's leading industry supplier of paper, cheese, motorcycles, beer, fabricated metal products, machinery and of course, championship winning football.

Our business pursuits are not limited to just data infrastructure. Foxconn's 3+3 corporate vision, will give us the ability to explore new industries such as electric vehicle, digital health, and robotics using AI, semiconductor and 5G technologies. Like any business, we will be subject to market demand.



*Young Liu,  
Chairman*



*Dr. Jay Lee,  
Vice Chairman*

But our advantage lies in our Wisconsin workforce and the company's smart manufacturing capabilities that make business possible here within the United States.

Our challenges have been real. Our successes and contributions at times overlooked. But the future remains bright for our company in Wisconsin and as we look to the new year, exciting times are to come. Our presence in Wisconsin has already caught the attention of other businesses and investors who share our vision for a Park that is sustainable for business and community growth. This will make our Park, the region, and our state a new hub for next-generation technological product design, smart manufacturing, and services.

This document is dedicated to the men and women at Foxconn and within the community who have worked endlessly throughout the year to drive business and bring to reality the overall vision of this generational project.

To a New Year!

*Young Liu, Chairman  
Dr. Jay Lee, Vice Chairman*



Dr. Lee with Village of Mt. Pleasant President



## PARTNERS & STAKEHOLDERS

In 2020, Foxconn opened its doors at the Park to more of our partners and stakeholders. These partners have been with Foxconn since the beginning, and we remain grateful to all partners and stakeholders who appreciate Foxconn's identity as a contract manufacturer and our ability to deploy smart manufacturing techniques that will revolutionize how other manufacturers across Wisconsin and the United States compete.

Foxconn was honored to welcome many members of the community to walk the grounds of the Park and our manufacturing operations throughout 2020. As we enter into 2021, Foxconn looks forward to hosting more Park visits and giving members of the business community a closer look at what Foxconn manufactures and how we do it through smart manufacturing.

Foxconn values those who support the material contributions we have made in Wisconsin and is grateful to those who understand that in order to make a business sustainable, companies must adjust to market

demands. Lastly, Foxconn thanks those who support our vision for smart manufacturing. With smart manufacturing, continued investment and high-tech jobs for all skill levels will be needed in Wisconsin – regardless of what we produce pursuant to market demands. We thank those partners who see that therein lies the exciting and endless opportunities.

**After all, 2021 could be the year the next game-changing technological product is introduced to the world. When that day comes, such a product could very well be manufactured here in Wisconsin.**



Racine County Executive



Racine County Board Chair



Metropolitan Milwaukee Association of Commerce (MMAC)



Racine County Economic Development Corporation

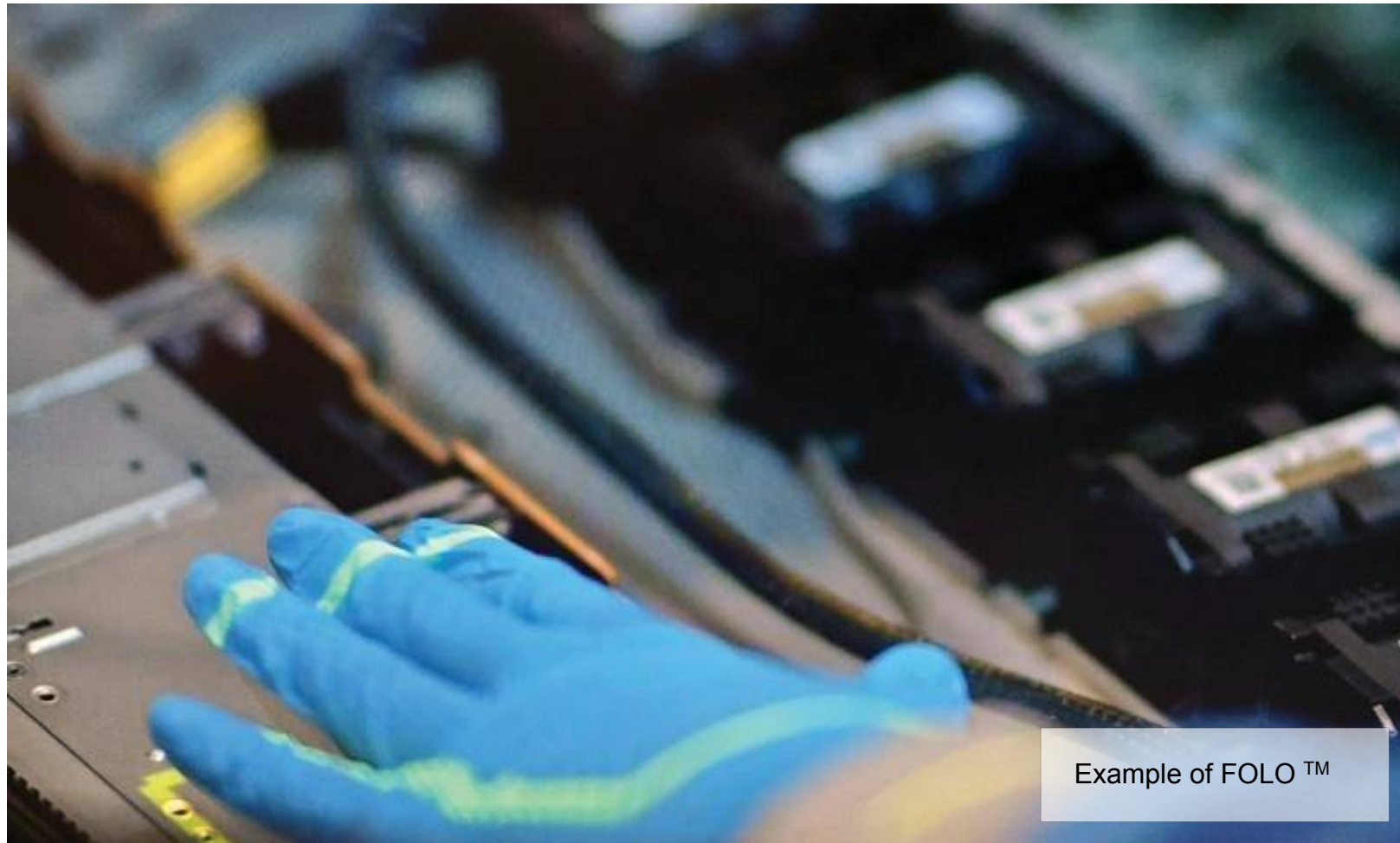


Dr. Jay Lee



Wisconsin Manufacturers & Commerce (WMC)





Example of FOLO™



## INDUSTRIAL AI INDUSTRY 4.0

Foxconn's smart manufacturing techniques will usher in a new age of manufacturing in Wisconsin and the United States. These technologies include industrial Artificial Intelligence (iAI), among others. For many, the use of these technologies in a manufacturing setting is known as "Industry 4.0."

**In 2020, human operators began to use iAI to make data-driven decisions throughout the manufacturing process and in the performance of their work. Take for example a Foxconn manufacturing line. Each line produces massive amounts of data per minute, measuring both machine performance and machine health. Human operators use iAI algorithms to make data-driven and cost saving decisions.**

Foxconn operators also work alongside an iAI guided program called FOLO™. This hologram-like program shows a human operator where a certain component or piece needs to be installed. This blend of human decision making, with the consistency and accuracy of iAI guided instruction, quickly trains or cross-trains new or existing employees. Smart manufacturing, supported by iAI, is going to revolutionize how manufacturers compete in the global economy, upgrade skills, create jobs, and onshore business to the United States. Throughout 2020, dozens of businesses walked through Foxconn's

Multipurpose Building at the Park to see for themselves how iAI and smart manufacturing can optimize their manufacturing operations.

It's all the more reason why Foxconn created the iAI Institute in 2020, a way by which companies can partner with Foxconn to discover how they can use iAI to optimize their operations. As we begin to look ahead to 2021, companies interested in unlocking the advantages of smart manufacturing concepts can work with Foxconn by visiting [iaiinstitute.com](http://iaiinstitute.com) or scanning the QR code (see below).

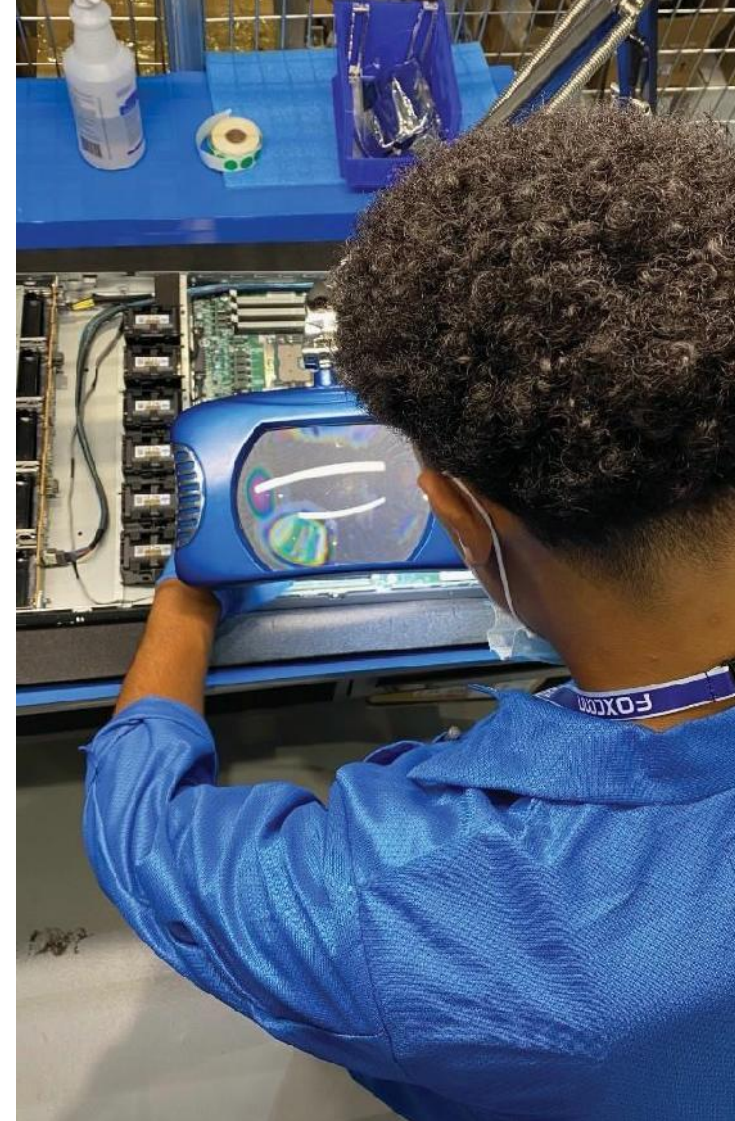


*Scan the QR above by opening the camera app on your smart phone. There you can learn more about the iAI Institute.*





Automated Guided Vehicles (AGV's)



## DATA INFRASTRUCTURE HIGH PERFORMANCE COMPUTING & MORE...

Everyday millions of people around the world, businesses, and government entities use devices and systems that are supported by data infrastructure. Take 2020 for example. More and more people conducted business and communicated with one another through video and file sharing platforms. In addition to these platforms, data infrastructure supports life-saving medical devices, personal vehicle GPS, video streaming at home, and cell phone use, just to name a few.

As the United States begins to evaluate our supply chain sources in a world driven by the need for reliable and secure data transmission, Foxconn in Wisconsin is positioned to capture a substantial percentage of the data infrastructure market in the United States.

**Combined with Foxconn's expertise for smart manufacturing, which keeps costs competitive, Foxconn is one of the only companies in the United States with the scalability to meet Tier 1 Customer demand for surface-mount technology.**

As a contract manufacturer, Foxconn is positioned to grow our existing business and acquire new customers who simply want to see where their product is being manufactured and see the men and women who work along the lines.

After all, considering everything that data infrastructure is used for, (communication protocols, data storage, network security,) wouldn't you want to be able to see how your server is made?

## 5G NETWORKS SECURE, RELIABLE, LOW LATENCY

### 5G networks - what is it and what is the relationship to smart manufacturing?

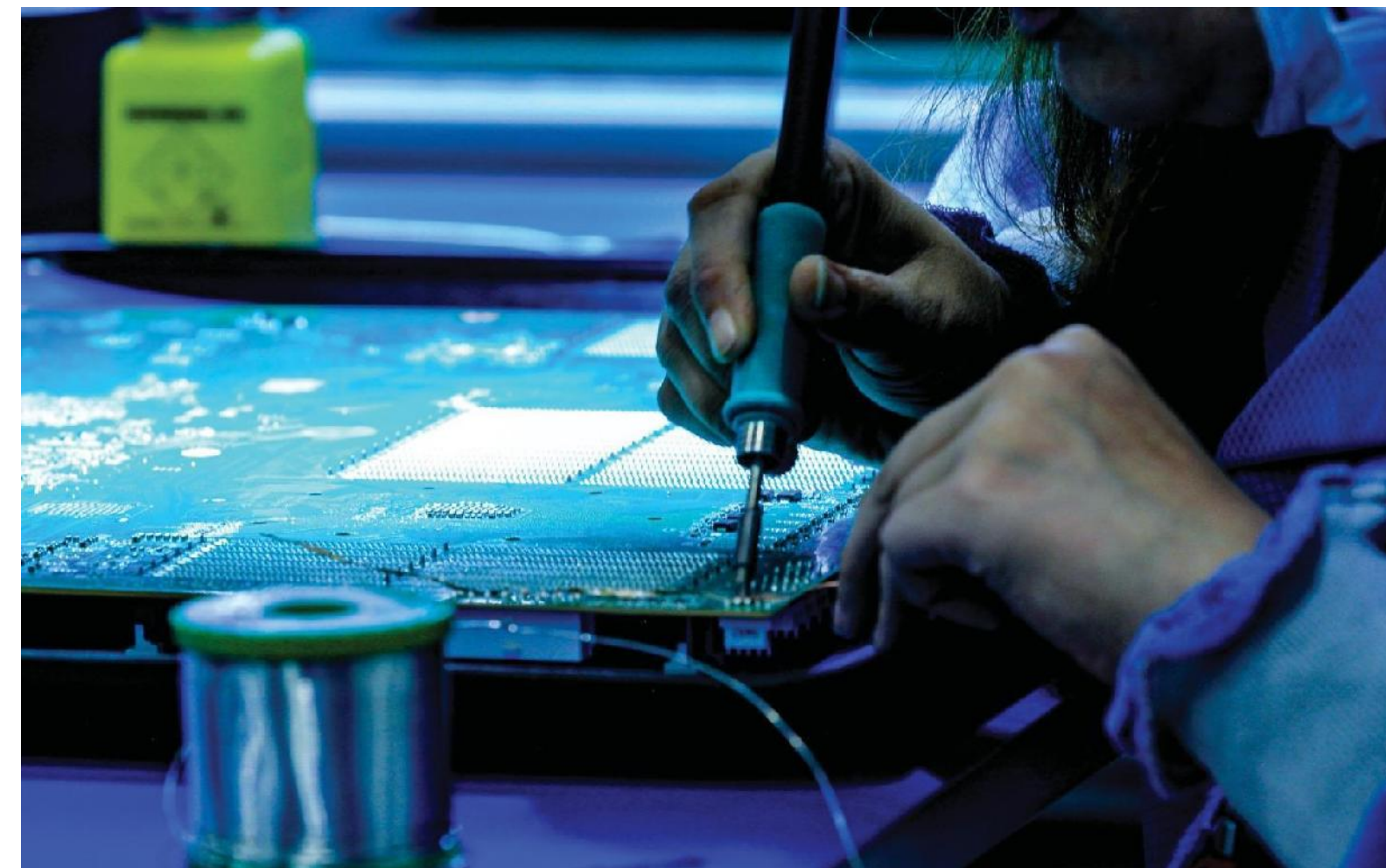
Like so many other developments in 2020, Foxconn deployed its very own 5G Networks. 5G, in an industrial setting, can provide a wide array of data coverage across a manufacturing floor that is secure and reliable.

5G gives Foxconn the ability to pass tremendous amounts of data with low latency. Machines along a manufacturing line are connected to the 5g network, constantly passing performance data from machine to machine, and machine to high performance computers. Thanks to high performance computers, iAI processed data is shared with human operators along the line.

Manufacturing pain points such as efficient energy use, inventory backlogs, machine health, machine downtime, product defects (Stream of Quality), can be avoided when line operators and engineers have the data to make cost saving adjustments and decisions.

With 5G, data can travel along an enclosed, and secure superhighway with very little or no speed limit.

5G, along with iAI, both empowered by High Performance Computing, represents elements of Foxconn's technological ecosystem that makes smart manufacturing possible at the Park.



## 2020 PARK DEVELOPMENT

Major construction milestones within the Park took place over the course of the last year. In 2020, Foxconn added two additional facilities to our Park – the nearly 300,000 square-foot Smart Manufacturing Center and the High Performance Computing Data Center Globe – both of which are nearing completion in early 2021.

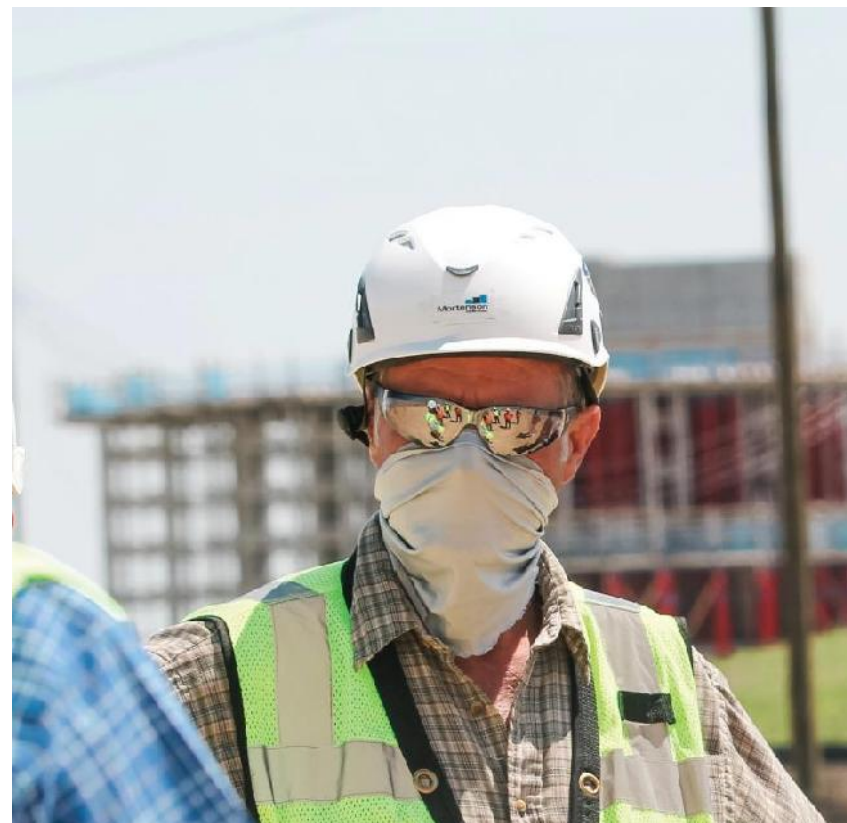
In addition, we completed interior buildout of the Phase 0 space within the 1 million square-foot Advanced Manufacturing Facility.

**Thanks to our construction partners, Gilbane | Exyte and Mortenson, our Park continues to take shape in a manner that has already attracted the interests of companies seeking to be part of Foxconn’s Park development and call Wisconsin home.**

Throughout 2020, and since Park construction began in 2018, over 3,200 men and women have worked a construction job at the Park.

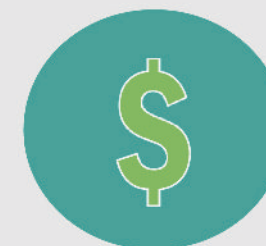
Through the hot summer days, and the cold winter months, people from all over the State of Wisconsin have worked on this project thus far. These Wisconsinites have come from every corner of the state, from Door County to Ashland County to Grant County to Racine County – all together, representing over 61 of Wisconsin’s 72 counties. In addition, over 90 percent of contract value for Park development has gone to hundreds of Wisconsin businesses.

Year over year, Foxconn has materially improved the landscape within Area 1 / Phase 1 of the Park – a process that continues to meet and exceed construction goals for inclusion and Wisconsin First Initiatives.



### FAQ's

*To date, how much has Foxconn invested in Wisconsin inclusive of capital expenditures, salaries and other expenses since operations began?*



### Answers

**\$850+**  
MILLION DOLLARS

*How many businesses have been awarded contracts, and what percentage of contract value has gone to Wisconsin businesses?*



**200+ BUSINESSES**  
& **90%** CONTRACT VALUE  
TO WI BUSINESSES

*How many jobs related to the park have been filled and how many jobs represent Wisconsin participation?*



**3200+ JOBS**  
90% REPRESENTING WI COUNTIES

*Where within Wisconsin do contracted businesses and workers come from?*



**61 OF WISCONSIN'S**  
72 COUNTIES ARE HOME TO EITHER  
A BUSINESS OR CONTRACTOR

*How many facilities have been constructed or are under construction at the Wisconsin Valley Science & Technology Park?*



**4 FACILITIES**  
1.45 MIL SQUARE FEET TOTAL

*How do I learn more about the future bid opportunities that are released by Foxconn?*



**FOR MORE  
DETAILS VISIT**  
WISCONNVALLEY.WI.GOV



Follow this QR code to access Foxconn News Releases. Share the good news!



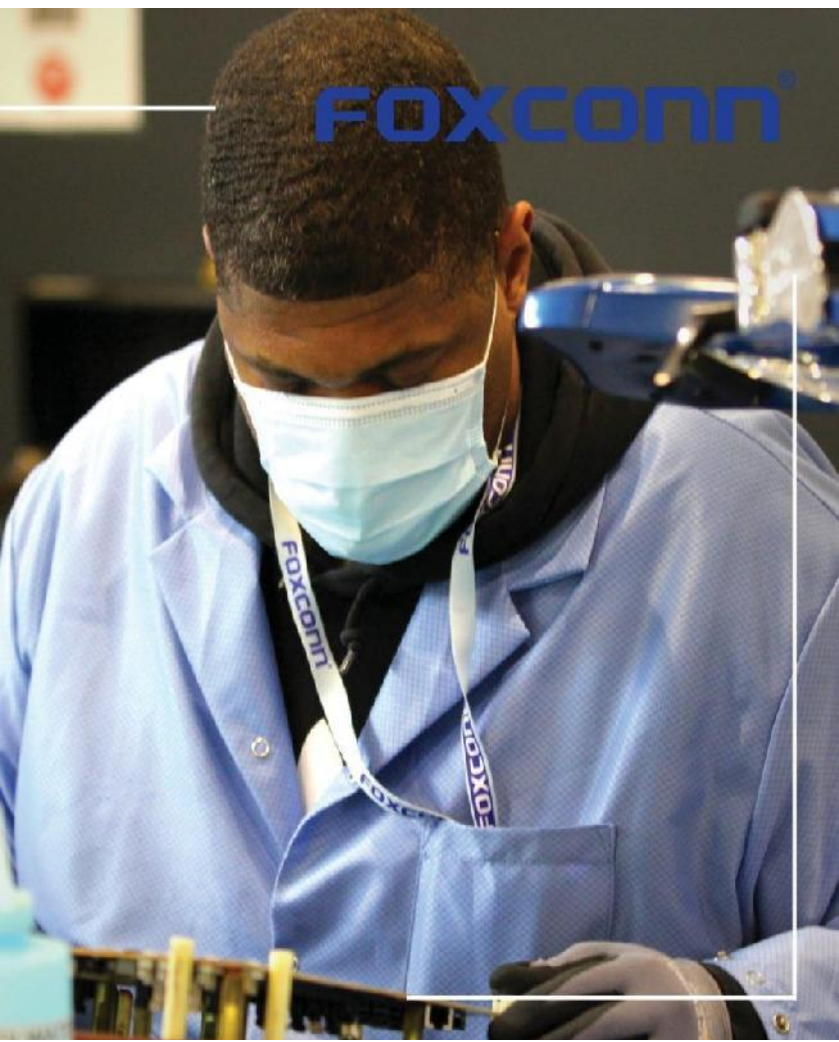
\*All Facts and Stats Last Updated **01.13.2021**



Follow this QR code to access Foxconn's YouTube page. Subscribe & Share!

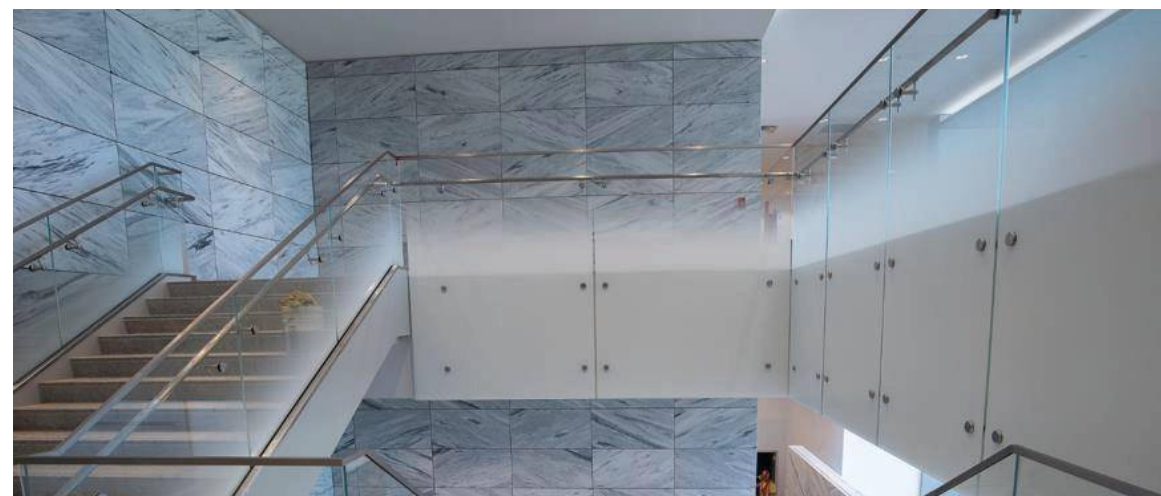


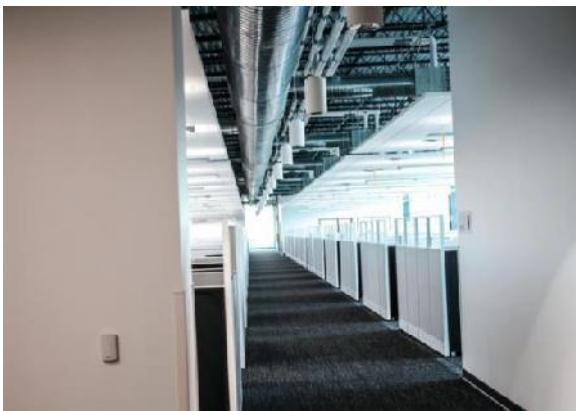
Foxconn Founder, Terry Gou



**FOXCONN®**  
**120,000 sq.ft.**  
*Multipurpose Building*

**FOXCONN®**  
**993,460 sq. ft.**  
*Advanced Manufacturing Facility*





New cafeteria space before employee move in



**FOXCONN®**  
**296,000 sq. ft.**  
*Smart Manufacturing Center*



## HPCDC GLOBE

Already a new landmark in the region, standing at nearly 100 feet tall, is Foxconn's High Performance Computing Data Center (HPCDC) Globe – a project that began construction in early 2020. Now visible from I-94, the HPCDC Globe will be home to future generations of Foxconn employees and a Network Operation Center (NOC).



Scan the QR (above) by opening the camera app on your smart phone to learn more.

Within the NOC, Foxconn engineers, IT professionals and computer scientists will be able to manage, control and direct the awesome amount of high performance computing power stored in nearby modular clusters known as FoxMOD – or in other words, containers that can house 16 racks of server and storage systems. FoxMOD (seen below) is the first deployment of modular data center clusters at the Park. FoxMOD can give a company scalability to meet computing power demands as needed.

As a center of gravity around the Park continues to grow, other like-minded companies will have the option to locate to the Park and utilize Foxconn's high performance computing for their own manufacturing operations. Beyond the borders of the Park, other companies will be able to partner with Foxconn for high performance computing services through Colocation and Software as a Service (SaaS).

Without data center capabilities, it would be difficult to deploy the ecosystem of Foxconn enabled technologies such as 5G Networks and iAI. Both of these technologies, (5G and iAI) allow contract manufacturing in the United States to remain competitive in a global marketplace where cents on the dollar matter.

The HPCDC Globe has been constructed with environmentally friendly features such as a geothermal well system. Comprised of 64 wells that extend 500 feet into the earth, this system can distribute cool air throughout the facility. Heat generated from servers are recycled during cold Wisconsin winters. Foxconn is looking forward to taking occupancy of the Globe in 2021!



Topping Off Ceremony with partners Eppstein Uhen Architects, Mortenson, RCEDC, MMAC, M7, and local elected officials



FoxMOD

# FOXCONN'S COVID-19 PANDEMIC RELIEF

To say that people, organizations & businesses have been impacted by the COVID-19 pandemic is an understatement.

COVID-19 has redefined how we socially interact, has required businesses to reconsider their methods of operations, has filled hospital wards beyond capacity, and most tragically, has taken the lives of many loved ones.

In response to COVID-19, Foxconn mobilized its manufacturing expertise and supply chain resources to help combat this pandemic. In April 2020, Foxconn began manufacturing procedural face masks in Mount Pleasant, WI. Dozens of Foxconn employees worked through nights and weekends in a race against time to get product to market. Thanks to their work, Foxconn was able to donate 100,000 masks to Governor Tony Evers and the State of Wisconsin. To date, Foxconn has assembled over



Scan QR code (left) to watch a short video on the pandemic response with mask assembly in Wisconsin.

13 million procedural masks in Wisconsin. As a contract manufacturer, Foxconn worked with Medtronic to produce their PB560 ventilator. Foxconn's employees, within 100 days, went from having no ventilator manufacturing capabilities to a fully certified manufacturing cell.

Both procedural masks and ventilators are examples of Foxconn's ability to react quickly to market demands.

# 13 MILLION

PROCEDURAL MASKS WERE ASSEMBLED IN MT. PLEASANT, WI. 100,000 MASKS WERE DONATED TO THE STATE OF WISCONSIN IN APRIL 2020



Foxconn donated 100,000 masks to the State of Wisconsin



Medical College of Wisconsin (MCW)



Wisconsin Hospital Association (WHA)





## THANK YOU, FOXCONN WI EMPLOYEES

Hundreds of you work for Foxconn Technology Group in Wisconsin. Throughout 2020, all of you, with professionalism and fortitude, have continued to work through the company's challenges. Some of our challenges are unique, some of our challenges are no different than those at any other company.

We have worked through our challenges, which at times, include cultural assimilation, changing business demands, tariffs, a pandemic, and a Presidential election year. Despite these challenges, you have found ways to contribute to the organization. Each of you are game-changers, working every day in your capacity to usher an era of smart manufacturing in the United States. This transformation will allow Foxconn, and other manufacturers across the United States, to remain globally competitive.

As you all know, to compete means to keep business and jobs in the United States. It also means the United States will be able to diversify her supply chain security across industries from medical to defense. Remain excited about our endless opportunities to manufacture products and services for ourselves and customers that are on the cutting edge of technological discoveries.

Many of you are Wisconsinites and know that this state, with its rich history of manufacturing, is poised to remain a manufacturing powerhouse that will forever supply the world with the adaptation of smart manufacturing concepts. Some of you are from beyond Wisconsin's borders and have chosen to make this state home while some of you also call Wisconsin home under H1B1 status. Regardless of the shoes you've walked in, you are and will always be welcomed because of your entrepreneurial spirit and drive to be game-changers.

While others have highlighted our challenges, we know as a team where our successes lie. Despite the pandemic of 2020, we have all found ways to pivot with the market. With speed and urgency, our company quietly made over 13 million masks for those in need. In a matter of 100 days, Foxconn created a certified and operational manufacturing cell for PB560 ventilators with flexibility and agility. In 2020, we started and continue to produce products for data infrastructure. In 2021, we will soon add more production lines within our Smart Manufacturing Center in response to customer demand.

What was just a hole in January 2020 is now our nearly completed High Performance Computing Data Center Globe. At 100 feet tall, the building will be a landmark for the region, and attract companies to the Park because of its computing power that businesses need in order to implement smart manufacturing. Lastly, some of us will soon move into the Advanced Manufacturing Facility.

**Take pride in what we have accomplished this year. Remain agile and celebrate your involvement in a unique business initiative whereby the future could bring endless opportunities. Celebrate with your family, friends and professional networks the work you do to usher a new era of smart manufacturing within Wisconsin.**

In the 1970's, Foxconn Founder Terry Gou started our company by manufacturing plastic dials for television sets. If Foxconn had remained rigid, refusing only to manufacture these plastic television dials, would Foxconn still be in business today?

Likewise, in 1943, Thomas Watson, President of IBM, thought there would be a world market for "maybe five computers." If we continue the spirit of our Founder and look to Watson's quote for perspective, exciting days are ahead of us.

# Happy 2021!

## FOXCONN®



Foxconn Founder, Terry Gou



