

Map V-1

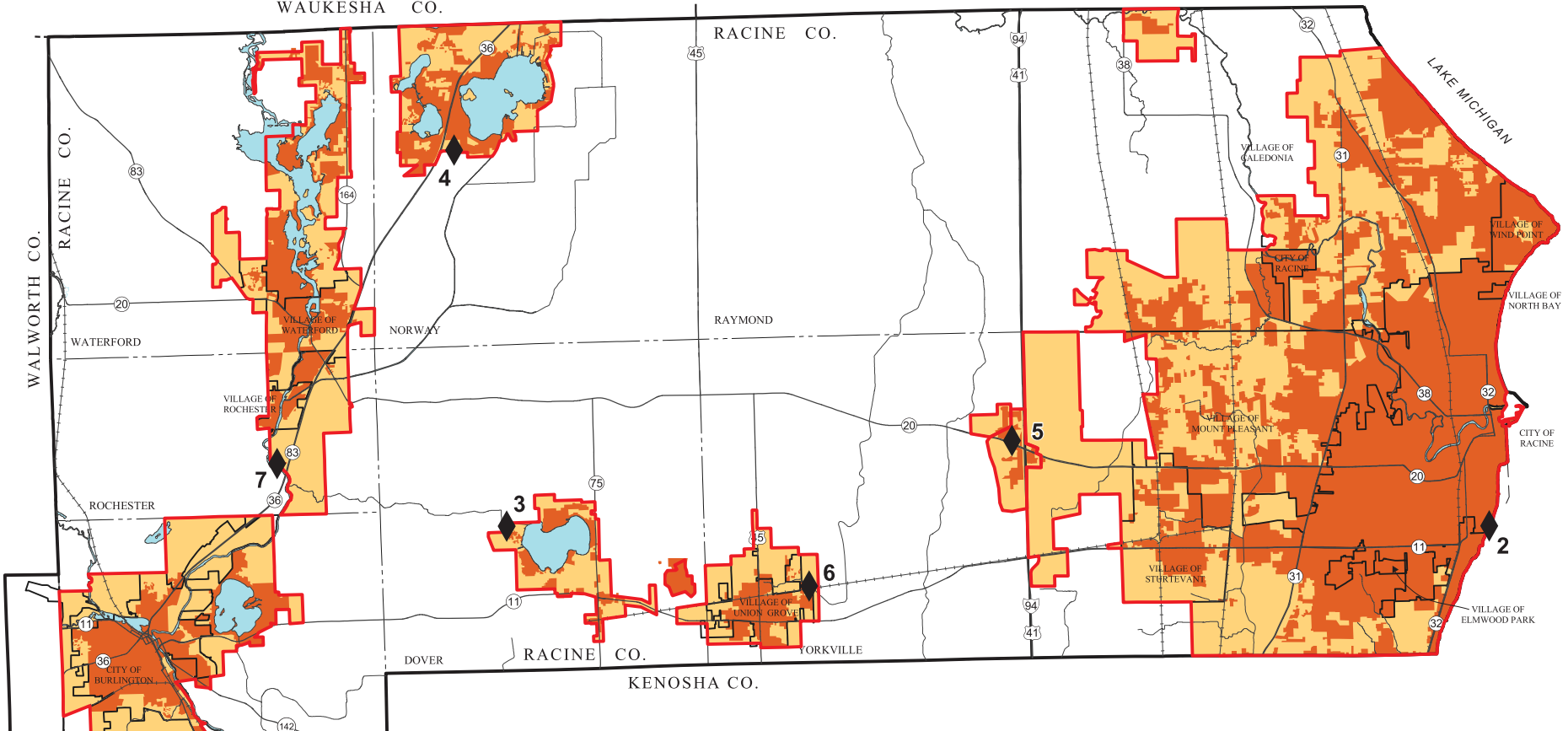
PLANNED SANITARY SEWER SERVICE AREAS AND AREAS SERVED BY SEWER IN THE RACINE COUNTY PLANNING AREA

MILWAUKEE CO.

WAUKESHA CO.

RACINE CO.

MILWAUKEE CO.



NOTE: THE TOWN AND VILLAGE OF ROCHESTER WERE CONSOLIDATED AS THE VILLAGE OF ROCHESTER IN DECEMBER 2008.

- AREA SERVED BY SANITARY SEWER: 2000
- PLANNED SANITARY SEWER SERVICE AREAS
- PLANNED SANITARY SEWER SERVICE AREA BOUNDARIES
- SEWAGE TREATMENT PLANT
- 4** REFERENCE NUMBER (SEE TABLE V-1)
- SURFACE WATER

Source: Wisconsin Department of Natural Resources and SEWRPC.

