

# Ties to the Land Newsletter

July 2016 – September 2016



USDA is an equal opportunity provider and employer. To file a complaint of discrimination, write to USDA, Assistant Secretary for Civil Rights, Office of the Assistant Secretary for Civil Rights, 1400 Independence Avenue, S.W., Stop 9410, Washington, DC 20250-9410, or call toll-free at (866) 632-9992 (English) or (800) 877-8339 (TDD) or (866) 377-8642 (English Federal-relay) or (800) 845-6136 (Spanish Federal-relay).

Resources for landowners and operators of Racine, Kenosha, and Milwaukee County

## TABLE OF CONTENTS

**CLICK ON EACH HEADLINE TO BE DIRECTED TO THE ARTICLE**

### Farm Service Agency

[NEW LOANS FOR PORTABLE FARM STORAGE AND HANDLING EQUIPMENT](#)

[FSA COUNTY COMMITTEE PERIOD OPEN UNTIL AUGUST 1ST](#)

[FSAfarm+ PROGRAM ALLOWS PRODUCER ACCESS TO THEIR FSA FARM DATA](#)

[2016 PRAIRIE WALK SEPTEMBER 28TH](#)

### Kenosha County Land Conservation

[KENOSHA COUNTY JOINS THE SOUTHEASTERN WISCONSIN FOX RIVER COMMISSION](#)

### Natural Resources Conservation Service

[PROGRAM SIGNUPS](#)

[WEB SOIL SURVEY PROVIDES BASIC INFORMATION FOR LAND MANAGEMENT DECISIONS](#)

### Racine County Land Conservation

[EARN \\$3000/ACRE WITH GRASSED BUFFER PROGRAM](#)

[\\$28 PER ACRE FOR DEVELOPING A NUTRIENT MANAGEMENT PLAN](#)

### UW Cooperative Extension

[AGRICULTURE GRANTS AND FINANCING WORKSHOP](#)

[WEBINAR SERIES ON AG LAND LEASING, ESTATE PLANNING & FARM SUCCESSION](#)

[RACINE & KENOSHA COUNTY FAIRS](#)

[UW-EXTENSION DAY AT THE STATE FAIR](#)



## **USDA OFFERS NEW LOANS FOR PORTABLE FARM STORAGE AND HANDLING EQUIPMENT**

*Portable Equipment Can Help Producers, including Small-Scale and Local Farmers, Get Products to Market Quickly*

USDA's Farm Service Agency (FSA) will provide a new financing option to help farmers purchase portable storage and handling equipment. The loans, which now include a smaller microloan option with lower down payments, are designed to help producers, including new, small and mid-sized producers, grow their businesses and markets.

The program also offers a new "microloan" option, which allows applicants seeking less than \$50,000 to qualify for a reduced down payment of five percent and no requirement to provide three years of production history. Farms and ranches of all sizes are eligible. The microloan option is expected to be of particular benefit to smaller farms and ranches, and specialty crop producers who may not have access to commercial storage or on-farm storage after harvest. These producers can invest in equipment like conveyers, scales or refrigeration units and trucks that can store commodities before delivering them to markets. Producers do not need to demonstrate the lack of commercial credit availability to apply.

Earlier this year, FSA significantly expanded the list of commodities eligible for Farm Storage Facility Loan. Eligible commodities now include aquaculture, floriculture, fruits (including nuts) and vegetables, corn, grain sorghum, rice, oilseeds, oats, wheat, triticale, spelt, buckwheat, lentils, chickpeas, dry peas sugar, peanuts, barley, rye, hay, honey, hops, maple sap, unprocessed meat and poultry, eggs, milk, cheese, butter, yogurt and renewable biomass. FSFL microloans can also be used to finance wash and pack equipment used post-harvest, before a commodity is placed in cold storage.

To learn more about Farm Storage Facility Loans, visit [www.fsa.usda.gov/pricesupport](http://www.fsa.usda.gov/pricesupport) or contact the Racine/Kenosha/Milwaukee FSA county office at 262-878-3353m extension 2.

## **FSA COUNTY COMMITTEE NOMINATION PERIOD IN RACINE/KENOSHA/MILWAUKEE COUNTY NOW OPEN**

The nomination period for the Racine/Kenosha/Milwaukee FSA county committee began on June 15, 2016. Nomination forms must be postmarked or received in the Racine/Kenosha/Milwaukee County FSA Office by close of business on Aug. 1, 2016.

County Committees are unique to FSA and allow producers to have a voice on federal farm program implementation at the local level. To be eligible to serve on the Racine/Kenosha/Milwaukee FSA county committee, a person must participate or cooperate in an agency administered program, be eligible to vote in a county committee election and reside in the Local Administrative Area (LAA) where they are nominated. All producers, including women, minority and beginning farmers and ranchers are encouraged to participate in the nomination and election process.

This year, nominations and elections will be held in LAA 2, LAA 3, and LAA 5. LAA 2 consists of Caledonia, Mt. Pleasant, Raymond, and Yorkville townships in Racine County. LAA 3 consists of Brighton, Randall, Salem, and Wheatland townships in Kenosha County, and LAA 5 which consists of all of Milwaukee County.

Producers may nominate themselves or others as candidates. Organizations representing minority and women farmers and ranchers may also nominate candidates. To become a nominee, eligible individuals must sign form FSA-669A. The form and more information about county committee elections is available online at: [www.fsa.usda.gov/elections](http://www.fsa.usda.gov/elections).

Elected county committee members serve a three-year term and are responsible for making decisions on FSA disaster, conservation, commodity and price support programs, as well as other important federal farm program issues. County committees consist of three to 11 members.

FSA will mail election ballots to eligible voters beginning Nov. 7. Ballots are due back in the Racine/Kenosha/Milwaukee County FSA Office by mail or in person no later than Dec. 5, 2016. All newly elected county committee members and alternates will take office January 1, 2017.

For more information about county committees, please contact the Racine/Kenosha/Milwaukee County FSA office at 262-878-3353, extension 2 or visit [www.fsa.usda.gov/elections](http://www.fsa.usda.gov/elections)

## **WHAT IS THE FSAfarm+?**

With **FSAfarm+**, producers will have web access to view their FSA data such as the common land unit data, related farm data, and other producer information. This data will be available in real time and at no cost to the producer. This functionality allows operators and owners to view, export and print farm records data, including maps, from their own home through a public facing web portal. Direct access will permit the operators and owners to electronically share their data, which could include maps, with a crop insurance agent, from their own personal computer.

The initial launch of **FSAfarm+** will allow farm operators and owners to access their farm and contact information. Operators and owners that are business entities can be accessed by entity members. A future release will allow access to agents or representatives of farm operators and owners, in addition to allowing other farm tenants access to information related to the land they lease.

**FSAfarm+** can be accessed by clicking the following link: [FSAfarm+](#)

To learn more about **FSAfarm+**, you may review the [FSAfarm+ Fact Sheet](#)

To learn more about how to access **FSAfarm+**, you may review the [FSAfarm+ "How to" Brochure](#)

To learn more about what **FSAfarm+** can do for you, you may review the [FSAfarm+ "What can it do for you" Poster](#)

### **About the FSAfarm+**

- **Electronic Reporting and Sharing** was authorized by the 2014 Farm Bill and mandated that USDA, upon request of the producer, electronically share with the producer (or agent) in real time and without cost to the producer (or agent) the common land unit data, related farm level data, and other information of the producer as listed below.
- The **FSAfarm+ Customer Self-Service Portal** allows farmers access:
  - farmland and cropland information
  - ACR/PLC bases and yield information
  - CRP and other conservation program acreage
  - HELC and WC status information
  - field boundaries (common land unit)
  - farm imagery
  - name and address details
  - membership interest and share information
  - contact information.
- **FSAfarm+** allows producers to search for and print their farm and tract maps that can be used for reporting acreage to FSA and crop insurance agents.
- **FSAfarm+** allows producers to print farm details, similar to the FSA-156EZ, such as cropland, base acres, yields, FAV status, land ownership details, CRP acres, legal description, other related farms, plus more.
- **FSAfarm+** allows producers to view maps of their Common Land Unit (field boundaries) and imagery for all of their farms for the current year.
- **FSAfarm+** allows producers to export their farm and/or tract Common Land Unit shapefiles for sharing with crop insurance agents and other interested companies.
- To ensure Personally Identifiable Information (PII) is protected, producers must obtain Level 2 eAuthentication before accessing the **FSAfarm+ Customer Self-Service Portal**.
- **FSAfarm+** allows producers to export their farm and/or tract details in a spreadsheet format for easily summarizing and sharing.
- A link to **FSAfarm+** can be found on the FSA Online Services Page.

For more information about **FSAfarm+** and/or how to obtain Level 2 eAuthentication, please contact the Racine/Kenosha/Milwaukee County FSA office at 262-878-3353, extension 2.

## **2016 PRAIRIE WALK**

Save the date! The 16<sup>th</sup> annual Walworth County Prairie Walk will be held on Wednesday, September 28<sup>th</sup> on the Ray and Sharon Rippel property near Burlington. The importance of pollinator habitats will be the topic of this year's prairie walk. While networking with other participants and conservation experts, you will glean many recommendation on how to establish the desired forbs and grasses and maintenance options other have used that have proven to be successful. If you are interested in attending this event, please contact the Racine/Kenosha/Milwaukee County FSA office at 262-878-3353, extension 2, or the Walworth County FSA Office at 262-723-3216, extension 2 and we will send you the registration form to you around the end of August.



**Kenosha Land & Water Conservation**  
 Dan Treloar - County Conservationist  
 19600 - 75th St., Suite 185-3, Bristol, WI 53104  
 (262) 857-1900 FAX (262) 857-1920  
 Website: <http://www.kenoshacounty.org/index.aspx?nid=676>

## KENOSHA COUNTY JOINS THE SOUTHEASTERN WISCONSIN FOX RIVER COMMISSION



The Southeastern Wisconsin Fox River Commission (SEWFRC) was created in 1997 by Wisconsin Act 27 in response to citizen and community concerns over flooding, drainage, and other water resources concerns along the Illinois Fox River. The Illinois Fox River is an important recreational and ecological asset for the quality of life of the citizens of Kenosha and the Southeastern Region. During 2011, the SEWFRC worked with the Southeastern Wisconsin Regional Planning Commission to rewrite and update their Implementation Plan. Through this process, the decision was made to expand the area of responsibility through Kenosha County down to the Illinois border. SEWFRC received Memorandums of Understanding from the counties and municipalities of the expanded area, indicating their desire to become members of the SEWFRC. This expansion enables the SEWFRC to be more competitive for larger federal grants while applying for them in conjunction with their partner the Fox Waterway Agency of Illinois. It was recognized that this effort would promote cooperation across county and state boundaries to further promote clean and navigable waters. The cooperation agreement between the SEWFRC and Kenosha County extends the activities of the Southeastern Wisconsin Fox River Commission from the northern boundary of the City of Waukesha in Waukesha County southward to the State of Illinois so as to be coterminous with the northern boundary of the Fox Waterway Agency of Illinois. This formal partnership between Kenosha County and the SEWFRC will improve and maintain the Illinois Fox River watershed for the common good in Waukesha, Racine and Kenosha Counties.

### WHAT DOES THE SEWFRC DO?

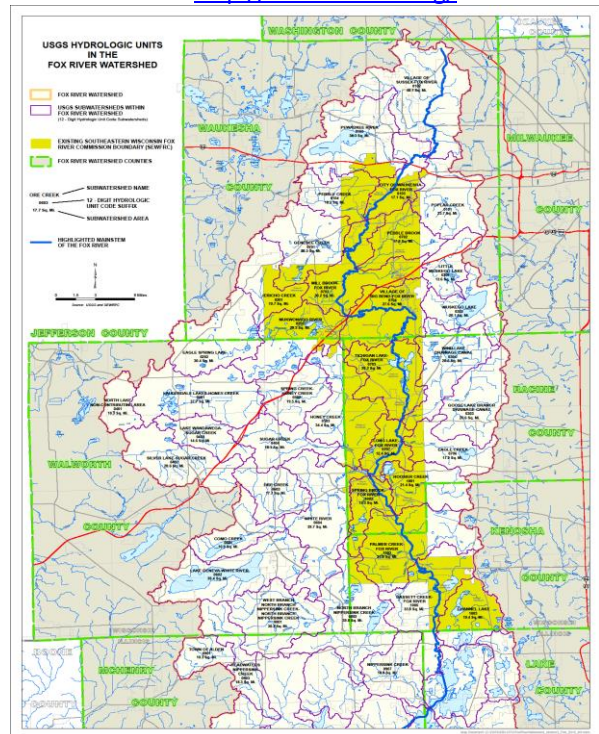
The Commission has supported numerous projects within the planning area and has contributed approximately \$1.5 million to projects that help improve the Illinois Fox River basin. The Southeastern Wisconsin Fox River Commission has coordinated and integrated the following programs and projects:

- Initiated and coordinated surveys and research projects to gather data relating to the surface waters and groundwater of the Illinois Fox River basin
- Maintained a liaison with Federal, State, and local agencies and other organizations involved in protecting, rehabilitating, and managing water resources

- Developed a public informational and educational outreach program on issues related to the surface waters and groundwater of the Illinois Fox River basin
- Improved water quality and the scenic, economic and environmental value of the surface waters and groundwater of the Illinois Fox River basin
- Protected or enhanced the recreational use of the navigable waters of the Illinois Fox River basin
- Coordinated and integrated county programs or projects for the Illinois Fox River basin surface waters and groundwater within its jurisdictional boundaries
- Developed and proposed programs or projects to make improvements to the navigable waters of the Illinois Fox River basin
- Created advisory committees as it considers necessary and promulgate rules necessary to implement the duties and powers granted to the Board of Commissioners

### SEWFRC GRANT / PROJECT ELIGIBILITY

Eligible projects may include: feasibility studies, construction projects, rehabilitation, navigation aids, channel dredging. The SEWFRC requires that each project funded, at a minimum, provide a 10% matching contribution. This match can be through monetary or in-kind volunteer time. For more information visit <http://www.sewfr.org/>



## **PROGRAM SIGNUPS**

Producers will want to plan ahead and sign up early this year for USDA conservation funding for 2017. If you are interested in the Environmental Quality Incentives Program (EQIP), applications must be received by September 2, 2016. NRCS is also taking application for the Conservation Stewardship program on a continuous basis until a 2017 batching deadline is announced.

By getting applications in early, we have time for staff to go out to the farm to plan all the needed practices for the particular field. It's easier to do an accurate plan before the snow flies, when you can see the actual landscape.

Producers who are interested in practices that may require permits, such as manure storage, streambank restoration, or grassed waterways, should begin planning and seeking permits as soon as possible. Applicants with shovel-ready projects (with designs completed and permits obtained) will receive higher priority.

## **WEB SOIL SURVEY**

The first soil map of Wisconsin was published in 1882. During the 1960s through the 1990s, soil survey work in Wisconsin moved around the state on a county-by-county basis as cost-sharing became available. In 2000, the state of Wisconsin weighed in to support soil surveys. The Wisconsin Department of Administration signed an agreement with NRCS to complete the initial soil survey of the state. In 2006, Wisconsin became the 10th state to have science-based soil survey information for the entire state on the [Official Web Soil Survey \(WSS\)](#).

WSS can be used for farm, local, and wider area conservation planning. It allows customers to prepare reports for their particular area of interest, save a digital copy, and/or print a copy. WSS is the sole source for official soil survey data. Every year on October 1, refreshed soil survey data from ongoing work and research is released to the public. Users can subscribe to receive notifications when soils data is refreshed. Older soil surveys are now being updated to modern standards for mapping and soil science as more detailed soil maps and data are developed using the latest GIS technologies.

Soil survey information is important for planning specific land uses and practices needed to obtain positive results on your farm. For example, a soil survey can indicate the limitations and potentials of the soil for development of recreational areas. A landscape architect can use a soil survey when designing for a specific area. A contractor can use the survey in planning, grading, and implementing an erosion control project during construction. A horticulturist can use it in selecting suitable vegetation. WSS provides the basic information needed to make decisions about land management, including those operations that must be combined for satisfactory soil performance. Soil surveys are also helpful for locating possible sources of sand, gravel, or topsoil.

Soil survey data seldom contain detailed, site-specific information. WSS is not intended for use as a primary regulatory tool in site-specific permitting decisions and cannot replace site-specific details, which require onsite investigation. It is, however, useful for broad regulatory planning and application. Understanding the capability and limitations of the different types of soil data is essential for making the best conservation planning decisions.

For more information about WSS, soil health, or financial and technical assistance offered by NRCS, visit [www.wi.nrcs.usda.gov](http://www.wi.nrcs.usda.gov).



## Racine County Land Conservation



14200 Washington Avenue  
Sturtevant, WI 53177  
262-886-8440

[www.racinecounty.com/government/public-works-and-development-services/land-conservation](http://www.racinecounty.com/government/public-works-and-development-services/land-conservation)

### Land Conservation Division Staff:

Chad Sampson, County Conservationist  
Jonathan Grove, Conservation Specialist  
Max Perrault, Conservation Planner

### EARN \$3,000/ACRE WITH:

Thanks to a generous grant from the Fund for Lake Michigan, we're pleased to announce the return of the grassed buffer program! Grassed buffers form barriers along waterways to reduce erosion and filter runoff. If you've got a stream, creek, or river running alongside your field, you may be eligible to earn money while protecting your land and water for 15 years--that's \$3,000 per acre of guaranteed profit off your land, paid up-front. We'll survey your land and work with you to design a grassed buffer that meets your preferences. If you have any questions or think you may be eligible, please contact us at:

262-886-8440

14200 Washington Ave.  
Sturtevant, WI 53177

<http://racinecounty.com/government/public-works-and-development-services/land-conservation>



**BEFORE GRASSED BUFFER**



**AFTER**

### \$28/ACRE FOR DEVELOPING A NUTRIENT MANAGEMENT PLAN

Nutrient management is a way for Wisconsin farmers to ensure that their crops receive nutrients at the right rate, time, and place to match crop needs and minimize nutrient losses from fields. Nutrient management planning is one of the best practices farmers can use to reduce excess nutrient applications to their cropland and the water quality problems that result from nutrient runoff to lakes, streams and groundwater. The Wisconsin Department of Agriculture, Trade and Consumer Protection (DATCP) tracks farms that develop and update their NM plans when NM Plan Checklist forms are submitted to DATCP by farmers, agronomists, and public agency staff.

Farmers can receive \$28 per acre towards establishing a nutrient management plan for eligible cropland. If you are interested in establishing a nutrient management plan for the cropland you rent or own or to find out if your land is eligible to take advantage of the current available funding, contact Racine County Land Conservation at (262) 886-8440. Farmers may work with a crop consultant or advisor to write nutrient management plans or they may also qualify to write their own plans by successfully completing a training course every four years. Free software (SnapPlus) is also available for download.

Farmland Preservation Program (FPP) participants will need to start complying with the new performance standards in 2017 and having an NM plan is part of the new requirement. At which time, Racine County Land Conservation staff will work with farmers and landowners to add these practices to those they are currently implementing. More information can be found online about establishing a nutrient management plan at: [http://datcp.wi.gov/Farms/Nutrient\\_Management/index.aspx](http://datcp.wi.gov/Farms/Nutrient_Management/index.aspx).

## **SAVE THE DATE – AGRICULTURE GRANTS & FINANCING WORKSHOP**

Are you looking for ways to develop your innovative agricultural business? Join us for an ag grants & financing workshop on Thursday, October 6<sup>th</sup> at the Michael Fields Agricultural Institute in East Troy. This workshop is designed to help you identify which grants or other financial options might be right for you. This workshop will discuss ways to plan your project and strengthen your application. Registration information will be posted on the Kenosha and Racine County UW-Extension websites when available. For more information or to be notified of registration opening, contact Leigh Presley at 262-857-1948 or 262-767-2905.



## **WEBINAR SERIES ON AG LEASING, ESTATE PLANNING & FARM SUCCESSION**

The UW-Extension Farm and Risk Management Team and the Center for Dairy Profitability are hosting a series of webinars starting in August and running through March of 2017. The series will focus on farm succession and estate planning issues. These will be available as live webinars, viewable at county host-sites, held generally the fourth Thursday of the month (except November) in the afternoons.

The first webinar will be on agricultural leasing contracts on Thursday, August 25<sup>th</sup>, 1:00 – 3:00 pm and again from 6:30 – 8:30 pm. The speaker will be Phil Harris, Farm Law Specialist with UW-Extension. If you are interested in attending this webinar, please contact Leigh Presley, UW-Extension Agriculture Educator in Racine and Kenosha Counties at 262-857-1948 or 262-767-2905.

## **RACINE & KENOSHA COUNTY FAIRS**

It's fair season! Don't miss the Racine County Fair July 27-31 in Union Grove. UW-Extension staff and Master Gardeners will have a booth in the Expo building to answer questions about our programming and home gardening. Download the new Racine County Fair mobile app to access the daily fair schedule, a map of the fairgrounds, and exhibit-specific content; search for "Racine County Fair" in Apple's App Store or Google Play. The Kenosha County Fair will be held August 17 – 21 at the fairgrounds in Wilmot. Check out the fun and educational Discovery Barnyard!

## **UW-EXTENSION DAY AT THE STATE FAIR AUGUST 9**

Attend the Wisconsin State Fair on August 9<sup>th</sup> and learn more about the many educational programs for you, your family, community and business offered through UW-Extension. Visit a variety of more than 40 hands-on interactive educational displays offered by Cooperative Extension county educators and state specialists. Learn more about your grass, farm tractor safety, backyard wildlife, woodland management, family finances, dazzling Wisconsin rocks, human ecology, container gardening, parenting, 4-H, Wisconsin's population, plant diseases, youth opportunities at Upham Woods and much more. View live bugs, a human brain, live bees and wildlife taxidermy mounts. Come see performances from statewide cultural groups and learn how to make your own sausage.

