

# Pritchard Park

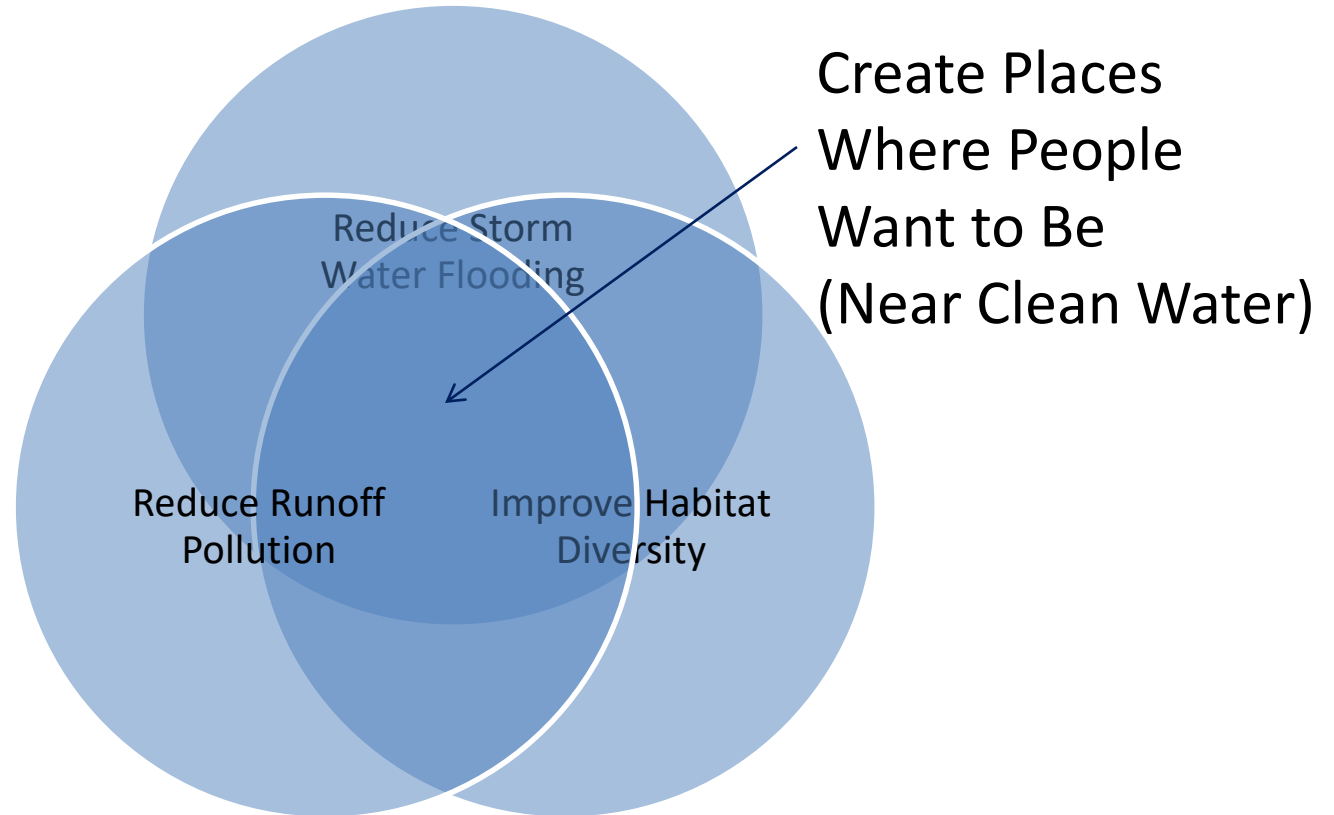
## Northeast Pond Improvements

Presented by Root-Pike Watershed Initiative Network  
November 12, 2020



*Restoring, Protecting and Sustaining the Root-Pike Basin Watersheds*

# The Vision



# Five Issues & Big Ideas



1) Pond Attracts  
Geese /  
Pollutants



2) Restore  
Southeast  
Wetland



3) Improve  
Southwest  
Forest



4) Turf Grass  
Creates Excess  
Nutrients



5) Nutrients  
Create Poor  
Water Quality

# Key Points

- Pond has significant algae and e.Coli issues
- Geese and mowed turf are the sources
- Urban fishing pond, but in poor quality
- Tallgrasses inhibit geese and filter pollutants
- New fishing piers to provide better access
- New rain gardens to limit runoff to the pond
- Reduce geese poop in the pavilion & beyond



# 1) Naturalize North Pond



+



=



\*very few people either

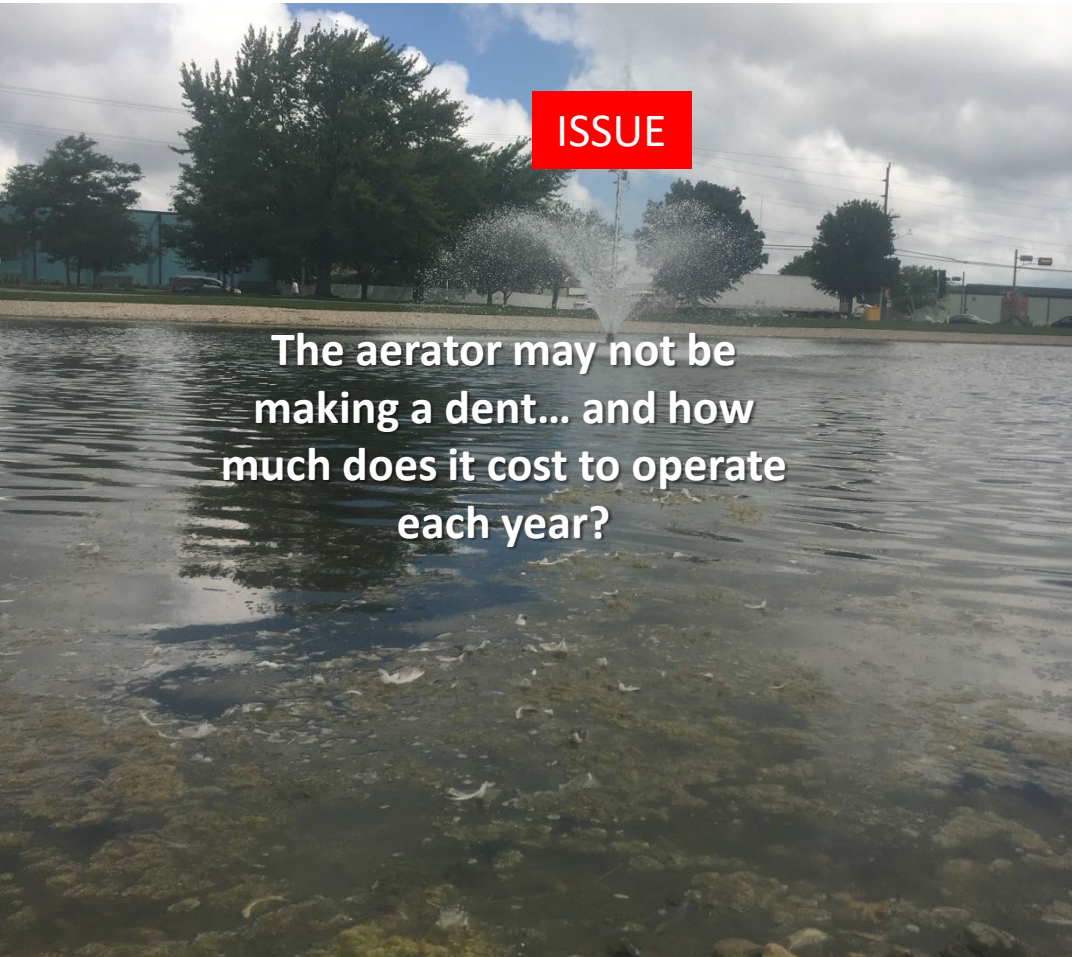
The pond needs to go on a diet. Let's treat the illness, not the symptoms.

# 1) Naturalize the North Pond





# 1) Naturalize the North Pond





# 1) Naturalize the North Pond

ISSUE



Geese Love It. Fish Hate It.

- 1) Turf adds more phosphorus/nitrogen
- 2) Rocks do not process polluted runoff
- 3) Rocks and turf are geese magnets

SOLUTION



Geese Hate It. Fish Love It.

- 1) Less turf will reduce pollutant loading
- 2) Native plants will process pollutants
- 3) Tall shoreline grasses deter geese



## 4) Reduce Runoff Pollution



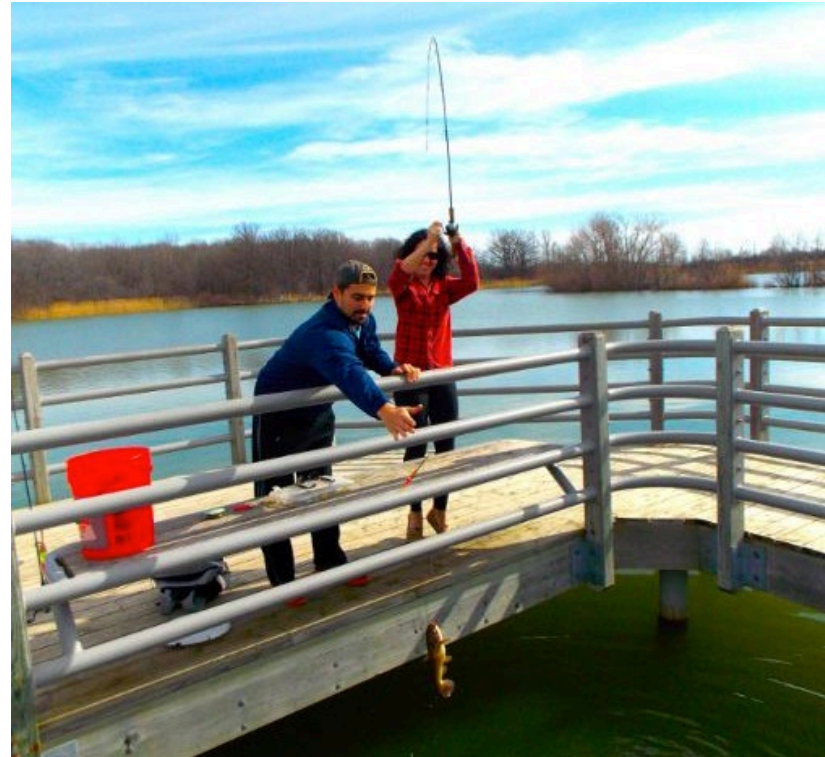
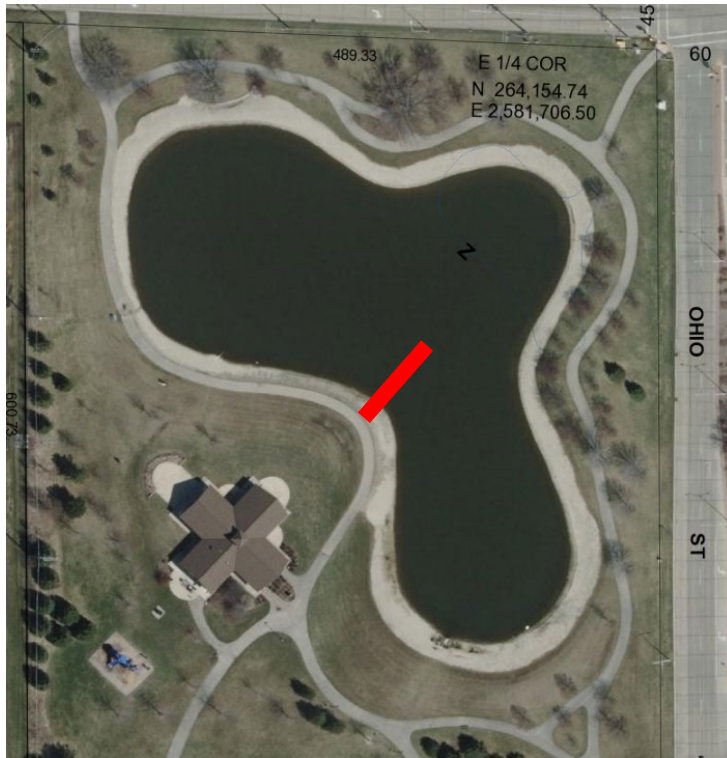


## 4) Reduce Runoff Pollution



- According to the Northeast Wisconsin Stormwater Coalition, one bushel of fresh grass clippings can contain 0.1 pounds of phosphorus which if it ends up in lakes or ponds is enough to produce 30 to 50 pounds of algae.

## 5) Creating Places Where People Want to Be

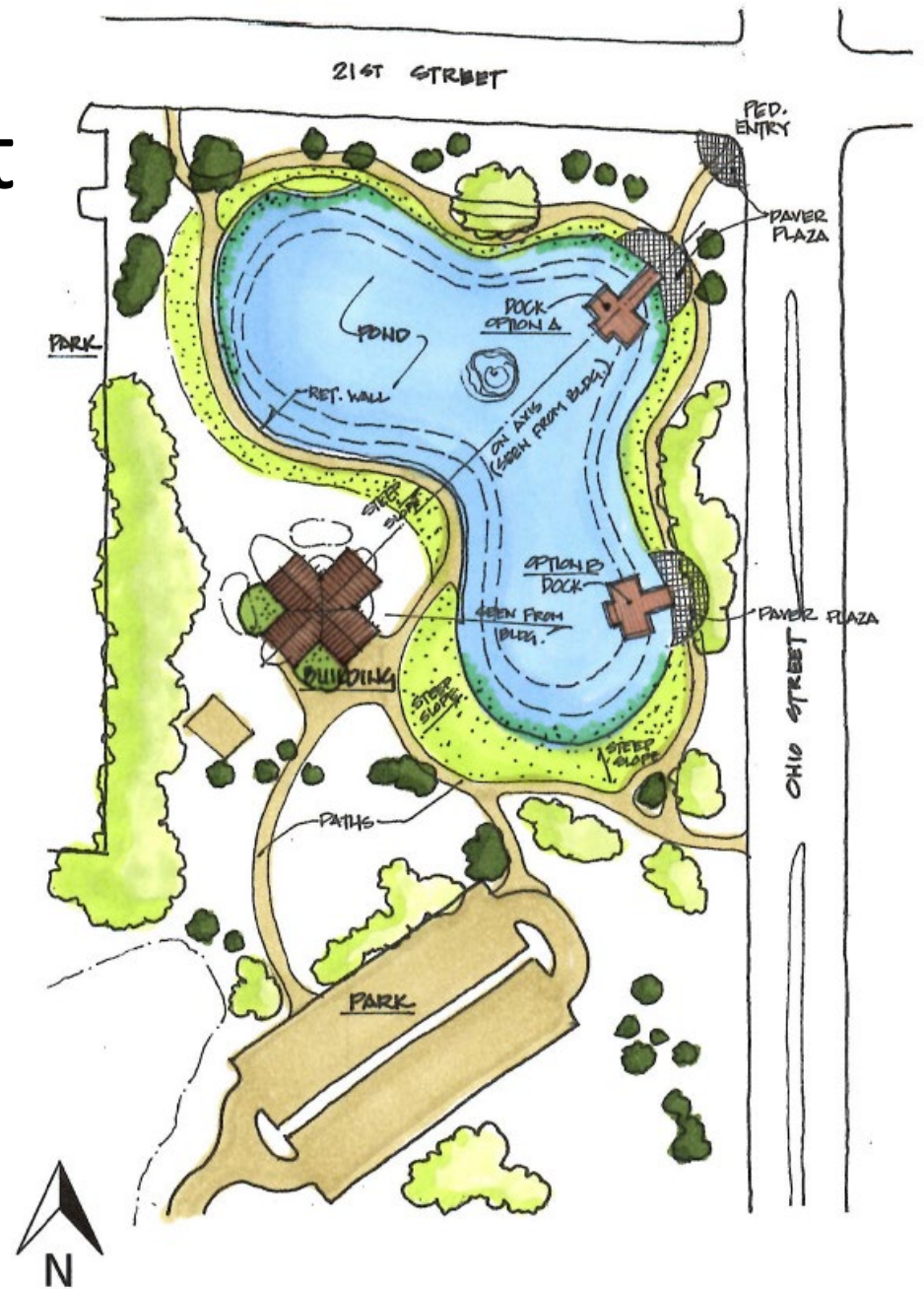


- Removing the stone and replanting it with tall grasses will deter geese, but make it harder to fish
- Adding some sort of fishing pier will create a fantastic way to show off the pond's clean water

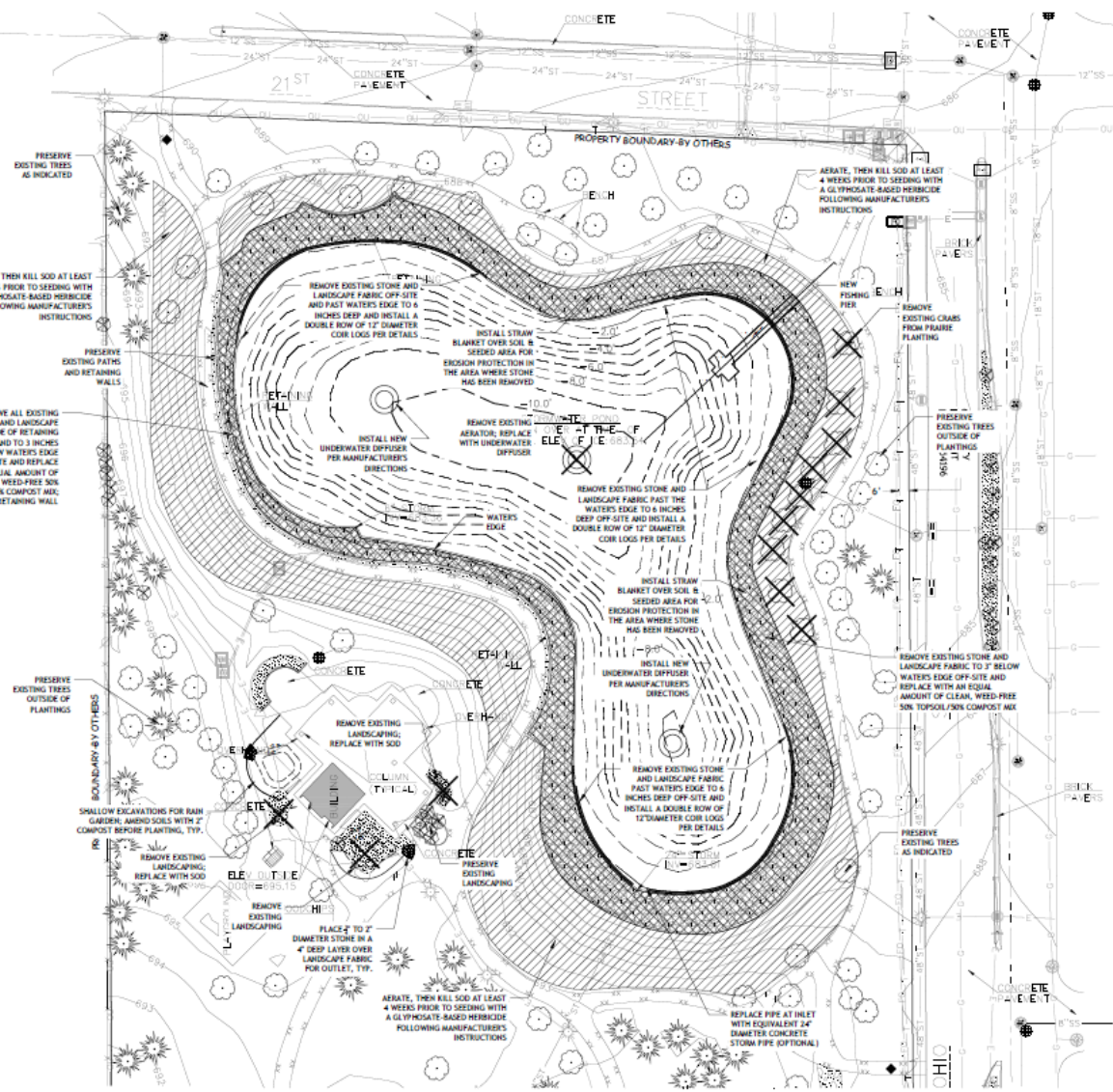


# New Pond Concept

- Remove Stone Rim
- Native Plantings
- New Fishing Piers
- Two Rain Gardens
- Attract Pollinators
- Better Fishing
- Less Mowing

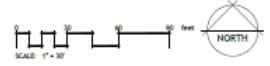


# New Pond Design



**LEGEND**

- COIR LOGS, 12" DIAMETER
- NEW UNDERWATER DIFFUSERS
- REMOVE EXISTING LANDSCAPE STONE AND FABRIC
- KILL SOD PRIOR TO SEEDING
- REMOVE EXISTING PLANTING
- PROPOSED CONTOURS



**DEMO & GRADING**

No.	Revision/Issue	Date
1		11-10-2020

Drawn by: KAS  
 Digital Date: 07-17-2020  
 Sheet Title: **DEMO & GRADING PLAN**

Sheet Number: **L 1.1**  
 Digital Number: 19-107

# Next Steps

- 1. County approval of pond improvement design**
2. RPW to write and secure construction grants
3. RPW to work with County to secure permits
4. RPW to bid construction work through the County
5. RPW to oversee construction and 3-year maint.
6. County to perform long-term maintenance