

Racine County
Secure Residential Care Center for Children and Youth

ECONOMIC INCLUSION PLAN

TABLE OF CONTENTS

INTRODUCTION	1
BUSINESS CONTRACTING AND INCLUSION GOALS	2
WORKFORCE INCLUSION AND DIVERSITY GOALS	3
DEFINITIONS	4-5
PROCESS FLOW CHARTS	6-8
BUSINESS INCLUSION COMMITMENT – LETTER OF INTENT – ‘ATTACHMENT A’	9-10
WORKFORCE INCLUSION COMMITMENT – ‘FORM WF-01DPS’	11

DRAFT

**Racine County
Secure Residential Care Center for Children and Youth**

ECONOMIC INCLUSION PLAN

Racine County SRCCCY Project

Racine County was awarded a grant for design and construction from the State of Wisconsin. The proposed design is a 48-bed facility, approximately 70,000 square feet, co-locating an SRCCCY and Detention Center. Both male and female youth from Racine and surrounding southeastern Wisconsin counties including Kenosha, Walworth, Washington, Ozaukee, Waukesha, Rock, and Jefferson will be served. Given that 85% of Wisconsin's juvenile correctional placements originate from the Southeastern region of the state, Racine County Human Services Department (RCHSD) is strategically placed to serve the needs of the community. The state-of-the art facility will incorporate a trauma informed approach, offering rehabilitative programs including mental health and substance abuse treatment.

Commitment to Business & Workforce Inclusion

Racine County is committed to demonstrating good faith efforts to place Racine County residents as priority toward building significant capacity in both workforce and businesses. Racine County will utilize good faith efforts to conduct outreach and foster engagement with trade contractors, suppliers, vendors and professional services firms to endeavor to achieve the following economic inclusion plan.

**Racine County
Secure Residential Care Center for Children and Youth**

ECONOMIC INCLUSION PLAN

To demonstrate good faith efforts to place Racine County residents as priority toward building significant capacity in both workforce and businesses, Racine County will conduct outreach and foster engagement with trade contractors, suppliers, vendors and professional services firms to endeavor to achieve the following economic inclusion plan.

Business Contracting and Inclusion Goals

Priority for direct and indirect contracts to qualified Racine County based businesses. The business must provide meaningful operational delivery of services with local employees and management at its location for a minimum of six months prior to proposal or bid submission. Functions can include, but not be limited to, operations, sales, supportive departments, equipment storage, and the like. The business must also be registered with and have paid sales and other taxes to the Wisconsin Department of Revenue. Documentation to substantiate the location is required and must be verifiable through Wisconsin state agencies and other sources. The business must not have any active exclusions in the System for Award Management (SAM) database (www.SAM.gov)

Business Inclusion Goals

	Professional Services	Construction
Racine County-based Businesses	5%	25%
Racine County-based Businesses	5% Combined	5% Combined
Minority-Owned (MBE) Business Enterprises		
Woman-Owned (WBE) Enterprises		
Small Business (SBE) Enterprises		
Veteran-Owned Business Enterprises		

Registration and Certification Requirements

Business Category	Registration/Certification Type
Racine County-based Business	Wisconsin Department of Financial Institutions
Minority-Owned Business Enterprise	Wisconsin Department of Administration (MBE)
Women-Owned Business Enterprise	Women's Business Enterprise National Council (WBENC) (WBE) National Minority Supplier Development Council (NMSDC) (MBE) Wisconsin Department of Transportation (DBE)
Small Business Enterprise	City of Milwaukee Office of Small Business Development (SBE)
Veteran-Owned Business Enterprise	Wisconsin Department of Veterans Affairs

Business Inclusion Compliance

Trade Contractors will be required to substantiate economic business inclusion through monthly reporting.

** Plan as of August 30, 2020 and subject to further revisions*

**Racine County
Secure Residential Care Center for Children and Youth**

ECONOMIC INCLUSION PLAN

Workforce Inclusion and Diversity Goals

Priority to hire qualified Racine County residents, minorities or people of color, women and veterans.

Workforce Inclusion Goals

	Professional Services	Construction
Racine County Residents	10% Combined	30%
Racine County Residents from Approved Training Programs		15%
Minorities or People of Color*	25% Combined	25% Combined
Women		
Veterans		

** Minorities or People of Color as defined: American Indian or Alaska Native – Asian – Black or African American – Hispanic or Latino – Native Hawaiian or Other Pacific Islander. Federal Register / Vol. 62, No. 10*

Workforce Inclusion Compliance

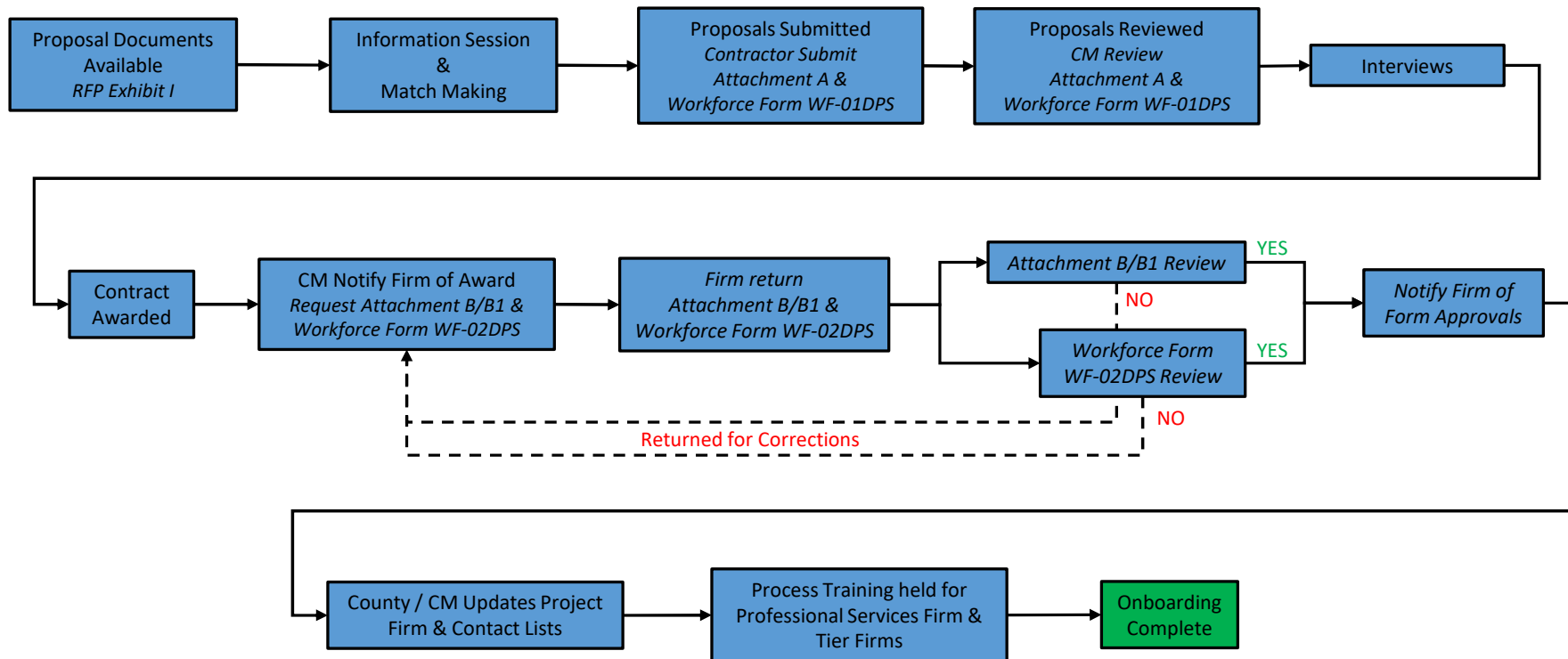
Trade Contractor will be required to substantiate workforce inclusion through certified payrolls. Certified payroll must include information regarding a worker's address, city, state, zip code, county, gender, race/ethnicity and veteran status.

Racine County
Secure Residential Care Center for Children and Youth

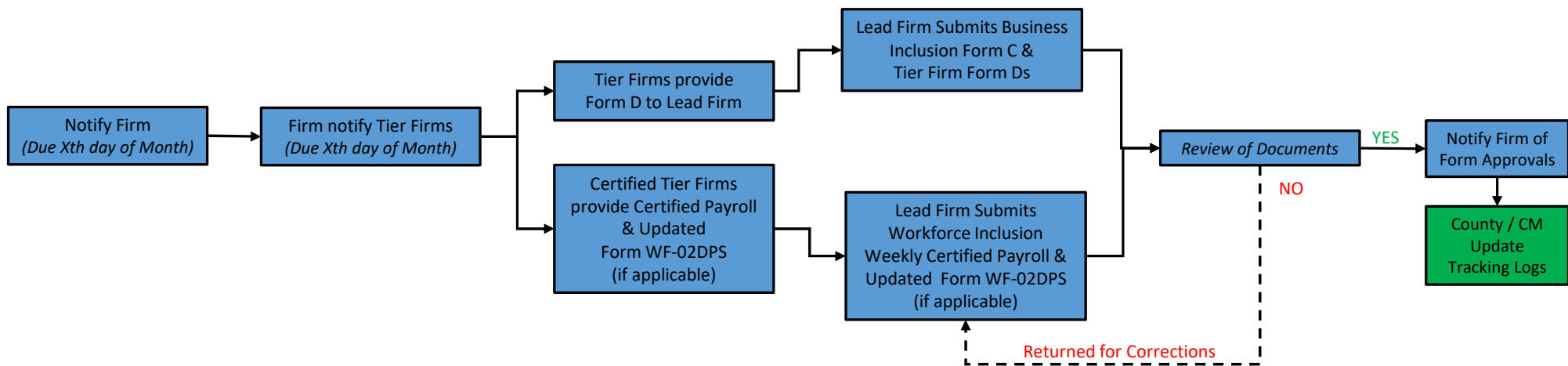
ECONOMIC INCLUSION PLAN

Definitions

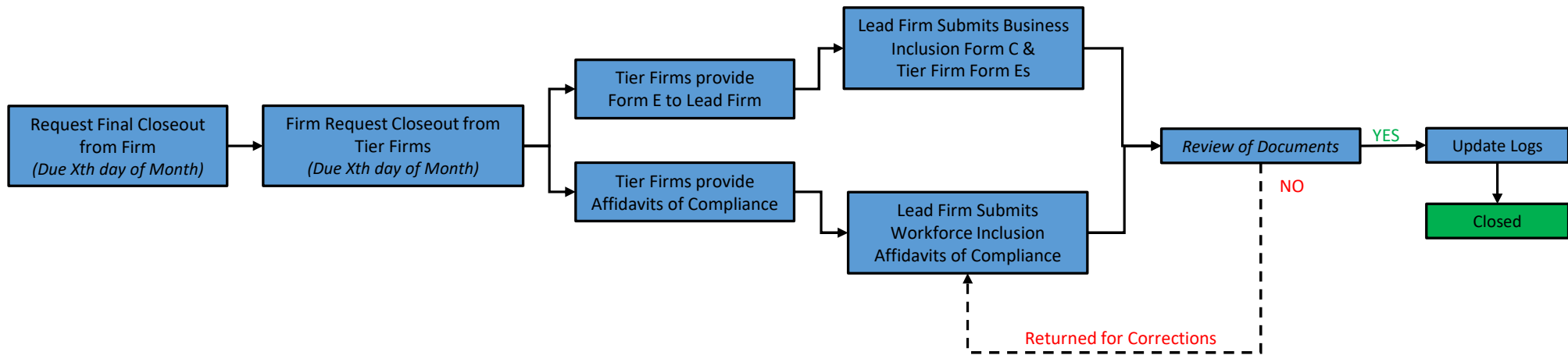
- **Racine County-Based Businesses** means Racine County (below noted areas that fall within the Racine County Limits).
 - Cities of Burlington and Racine, Villages of Caledonia, Elmwood Park, Mount Pleasant, North Bay, Raymond, Rochester, Sturtevant, Union Grove, Waterford, Wind Point, and Yorkville, Towns of Burlington, Dover, Norway, and Waterford, and Unincorporated communities of Buena Park, Caldwell, Cedar Park, Eagle Lake Manor, Eagle Lake Terrace, Franksville, Honey Creek, Honey Lake, Husher, Ives Grove, Kansasville, North Cape, Raymond, Tichigan, Union Church, and Yorkville; and any future municipalities created within the boundaries of Racine County.
 - The business must provide meaningful operational delivery of services with local employees and management at this location for a minimum of six months prior to proposal or bid submission. Functions can include but not be limited to operations, sales, supportive departments, equipment storage and the like. The business must also be registered with and have paid sales and other taxes to the Wisconsin Department of Revenue. Documentation to substantiate the location is required and must be verifiable through Wisconsin state agencies and other sources. The business must not have any active exclusions in the System for Award Management (SAM) database (www.SAM.gov)
 - Supply Chain businesses are recognized as firms that provide materials and supplies, lease equipment, manufacture or fabricate products from raw materials or substantially alter the material or supplies obtained by the contractor/vendor, are Regular Dealers, and provide transportation services.
- **Professional Services** means services requiring specialized knowledge and skill, usually of a mental or intellectual nature and usually requiring a license, certification, or registration. Services include but are not limited to architectural, engineering, Surveying, Environmental Testing and Investigation, Commissioning, Exterior Enclosure Consultants and Economic Inclusion Compliance Tracking Agent.
- **Construction Services** means all aspects of constructing, fabricating, installing, erecting, and maintaining utilities and facilities of all types
- **Qualified Firm** means a firm that meets the requirements as defined for Racine County-based Business and/or Minority-Owned, Woman-Owned, Small, and Veteran-Owned Business Enterprises.
- **Racine County Residents from Approved Training Programs** means identified unemployed or underemployed candidates from First Choice Pre-Apprenticeship, Gateway Technical College, WRTP/Big Step, or other pre-approved training program. Unemployed / Underemployed means as defined by Racine County as households that fall in the current federal fiscal year Income Limit Categories of Extremely Low, Very Low and Low as compared to the current federal fiscal year Median Family Income Limit established for the Racine County Area.
Reference link for current fiscal year information: <https://www.huduser.gov/portal/datasets/il.html>



Commitment & Validation Process – Professional Services



Monthly Reporting Process – Professional Services



EIP Closeout Process – Professional Services

**Racine County
Secure Residential Care Center for Children and Youth**

ECONOMIC INCLUSION PLAN

STATEMENT OF INTENT

(“ATTACHMENT A”)

Letter of Intent from Business to Perform as Trade Contractor or Professional Services Firm

RFP/BID RELEASE #: _____

Name of Project: Racine County Secure Residential Care Center for Children and Youth (Racine County SRCCCY)

Project Number: _____

(Legal Business Name)

(Full Business Address)

The undersigned intends to perform work in connection with the above-referenced project as (check one):

_____ a Sole Proprietor _____ a Corporation

_____ a Partnership _____ a Joint Venture

The business status of the undersigned is confirmed by the attached Letter of Certification, effective _____. In addition, in the case where the undersigned is a Joint Venture, provide a copy of Joint Venture Agreement.

The undersigned is prepared to provide the following described services or supply the following described goods in connection with the above-named project:

The above described services or goods are offered for the following price, with terms of payment as stipulated in the Contract Documents: \$

PARTIAL PAY ITEMS

For any of the above items which are partial pay items, specifically describe the work and subcontract dollar amount:

If more space is needed to fully describe the business firm’s proposed scope of work and/or payment schedule, attach additional sheet(s).

**Racine County
Secure Residential Care Center for Children and Youth**

**ECONOMIC INCLUSION PLAN
Workforce Inclusion Commitment
(Form WF-01DPS)**

DESIGN & PROFESSIONAL SERVICES

This form must be submitted at time of proposal or bid submission

Table A. Minimum commitment of Prime Professional Services Provider

	Minimum participation requirements of SRCCY contract holder	
COMMITMENT	RACINE COUNTY (%)	MINORITIES or PEOPLE OF COLOR WOMEN VETERANS (%)
	10%	25% Combined

Table B. Firm Name: _____

	Minimum workforce inclusion commitment if awarded a contract	
Estimated Total Workforce Hours: _____	RACINE COUNTY (%)	MINORITIES or PEOPLE OF COLOR WOMEN VETERANS (%)
_____ % Hours	_____ %	_____ %

Submitted by:

COMPANY NAME

NAME (PRINT)

TITLE

EMAIL ADDRESS

PHONE

SIGNATURE

DATE