

Structures to Remain
 1. House
 2. Barn
 3. Hall
 4. Pool Area
 5. Cottage

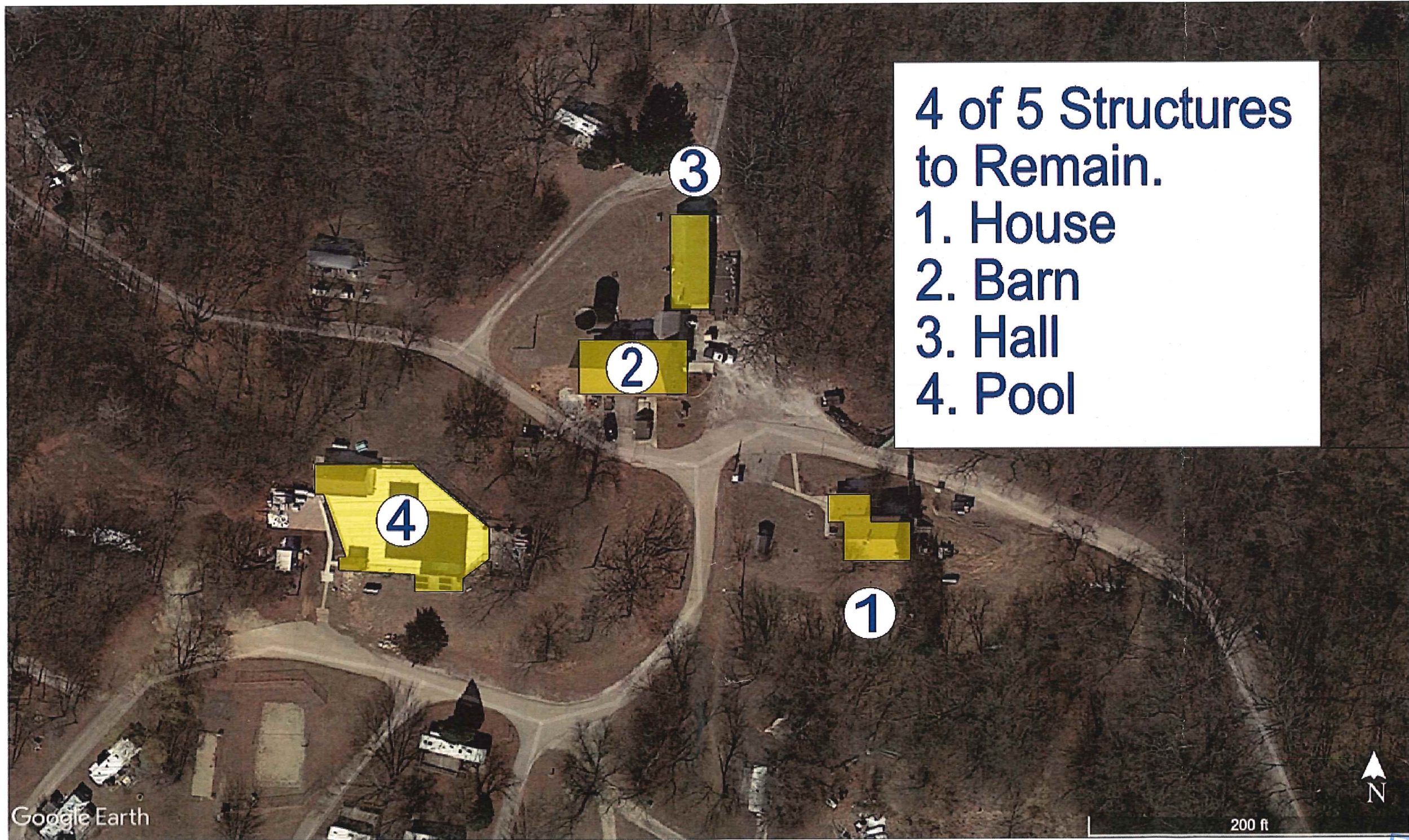


1000 ft

RECEIVED

OCT 13 2020

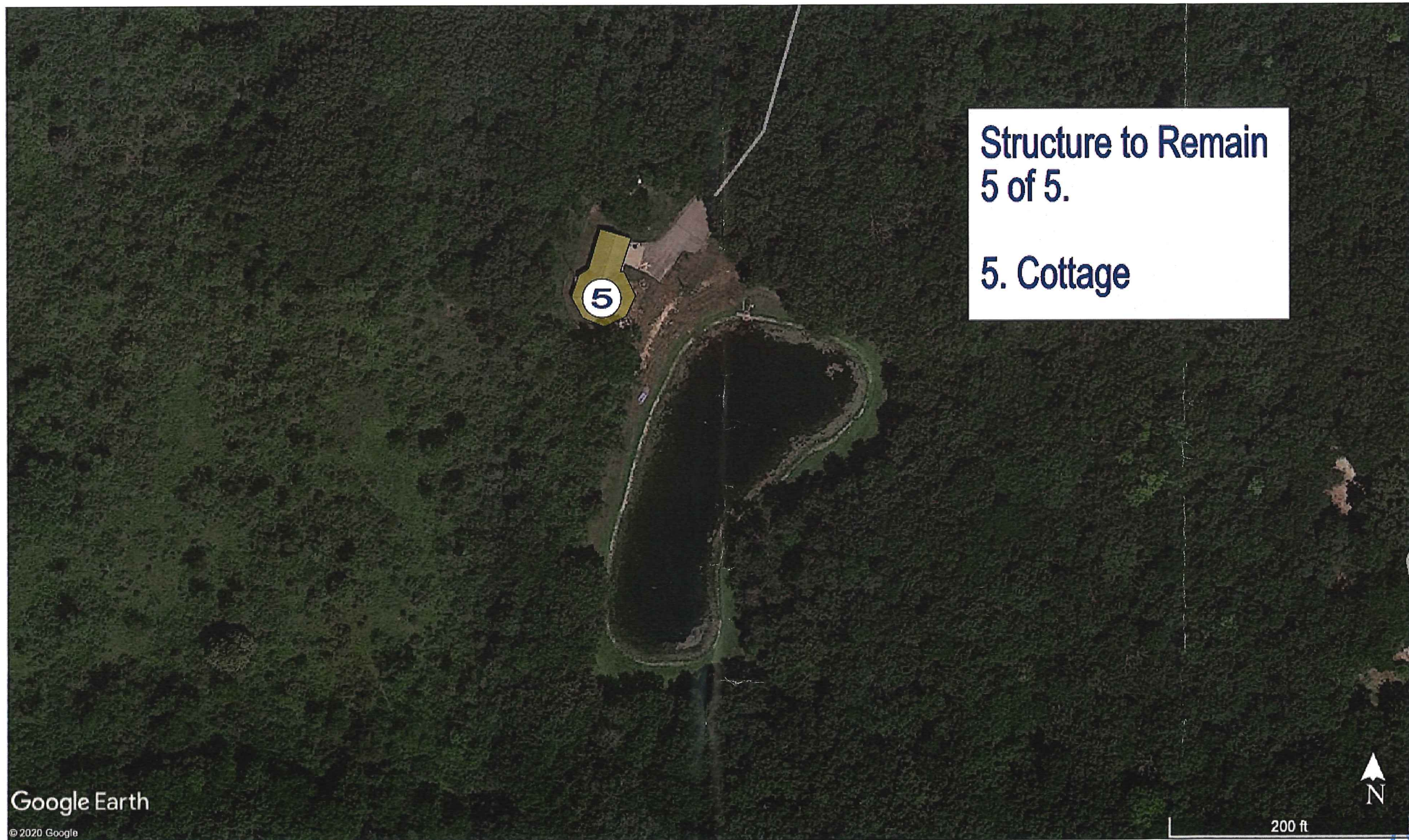
RACINE COUNTY



**4 of 5 Structures
to Remain.**

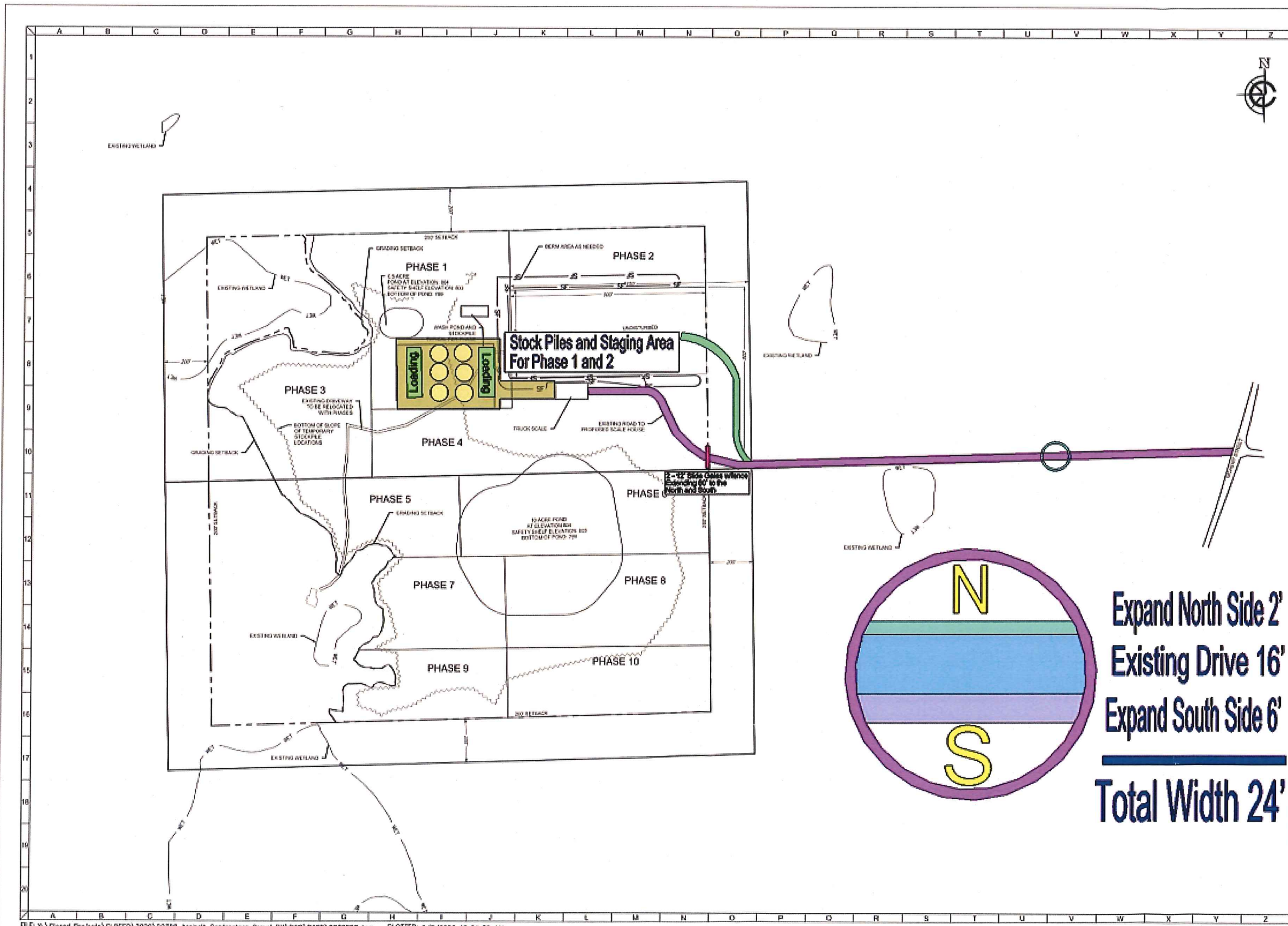
- 1. House**
- 2. Barn**
- 3. Hall**
- 4. Pool**

RECEIVED
OCT 13 2020
RANKINE COUNTY



Structure to Remain
5 of 5.
5. Cottage

RECEIVED
OCT 13 2020
RACINE COUNTY



CLIENT

ASPHALT CONTRACTORS GRAVEL PIT
TOWN OF BURLINGTON, RACINE COUNTY, WI

PHASING PLAN

EXHIBIT



CARDINAL ENGINEERING LLC
DESIGNING IN TRUE DIRECTIONS

1300 LA SALLE STREET,
LAW CENTER, WISCONSIN
262-781-8478
CARDINALENGINEERING.COM

Expand North Side 2'
Existing Drive 16'
Expand South Side 6'
Total Width 24'

NO	REVISION DESCRIPTION	REV DATE

SCALE: 1" = 200'
PROJECT NUMBER: 20358
DATE: 06/10/2020
PROJECT MANAGER: IVAN CARDINAL, PE
DRAWN BY: ECF
CHECKED BY: ECF
SHEET NUMBER: 7 OF 13

RECEIVED

OCT 13 2020

RACINE COUNTY

FILE: Y:\Closed Projects\CLOSED\2020\20358 Asphalt Contractors Gravel Pit\DWG\BASE\20358050.dwg PLOTTED: 9/9/2020 10:04:30 AM