

Racine County  
Secure Residential Care Center for Children and Youth

## ECONOMIC INCLUSION PLAN

---

### TABLE OF CONTENTS

INTRODUCTION .....	1
BUSINESS CONTRACTING AND INCLUSION GOALS .....	2
WORKFORCE INCLUSION AND DIVERSITY GOALS .....	3
DEFINITIONS .....	4-5
FLOW CHART .....	6-8
LETTER OF INTENT – ‘ATTACHMENT A’ .....	9-10
WORKFORCE INCLUSION COMMITMENT – ‘FORM WF-01DPS’ .....	11

**Racine County  
Secure Residential Care Center for Children and Youth**

**ECONOMIC INCLUSION PLAN**

---

Racine County SRCCCY Project

Racine County was awarded a grant for design and construction from the State of Wisconsin. The proposed design is a 48-bed facility, approximately 70,000 square feet, co-locating an SRCCCY and Detention Center. Both male and female youth from Racine and surrounding southeastern Wisconsin counties including Kenosha, Walworth, Washington, Ozaukee, Waukesha, Rock, and Jefferson will be served. Given that 85% of Wisconsin's juvenile correctional placements originate from the Southeastern region of the state, Racine County Human Services Department (RCHSD) is strategically placed to serve the needs of the community. The state-of-the art facility will incorporate a trauma informed approach, offering rehabilitative programs including mental health and substance abuse treatment.

Commitment to Business & Workforce Inclusion

Racine County is committed to demonstrating good faith efforts to place Racine County residents as priority toward building significant capacity in both workforce and businesses. Racine County will utilize good faith efforts to conduct outreach and foster engagement with trade contractors, suppliers, vendors and professional services firms to endeavor to achieve the following economic inclusion plan.

**Racine County  
Secure Residential Care Center for Children and Youth**

**ECONOMIC INCLUSION PLAN**

To demonstrate good faith efforts to place Racine County residents as priority toward building significant capacity in both workforce and businesses, Racine County will conduct outreach and foster engagement with trade contractors, suppliers, vendors and professional services firms to endeavor to achieve the following economic inclusion plan.

**Business Contracting and Inclusion Goals**

Priority for direct and indirect contracts to qualified Racine County based businesses. The business must provide meaningful operational delivery of services with local employees and management at this location for a minimum of six months prior to proposal or bid submission. Functions can include but not be limited to operations, sales, supportive departments, equipment storage and the like. The business must also be registered with and have paid sales and other taxes to the Wisconsin Department of Revenue. Documentation to substantiate the location is required and must be verifiable through Wisconsin state agencies and other sources.

**Business Inclusion Goals**

	<b>Professional Services</b>	<b>Construction</b>
<b>Racine County-based Businesses</b>	<b>5%</b>	<b>25%</b>
<b>Racine County-based Businesses</b>	<b>5% Combined</b>	<b>5% Combined</b>
<b>Minority-Owned (MBE) Business Enterprises</b>		
<b>Woman-Owned (WBE) Enterprises</b>		
<b>Small Business (SBE) Enterprises</b>		
<b>Veteran-Owned Business Enterprises</b>		

**Registration and Certification Requirements**

<b>Business Category</b>	<b>Registration/Certification Type</b>
Racine County-based Business	<a href="#">Wisconsin Department of Financial Institutions</a>
Minority-Owned Business Enterprise Women-Owned Business Enterprise	<a href="#">Wisconsin Department of Administration (MBE)</a> <a href="#">Women's Business Enterprise National Council (WBENC) (WBE)</a> <a href="#">National Minority Supplier Development Council (NMSDC) (MBE)</a> <a href="#">Wisconsin Department of Transportation (DBE)</a>
Small Business Enterprise	<a href="#">City of Milwaukee Office of Small Business Development (SBE)</a>
Veteran-Owned Business Enterprise	<a href="#">Wisconsin Department of Veterans Affairs</a>

**Business Inclusion Compliance**

Trade Contractors will be required to substantiate economic business inclusion through monthly reporting.

**Racine County  
Secure Residential Care Center for Children and Youth**

**ECONOMIC INCLUSION PLAN**

**Workforce Inclusion and Diversity Goals**

Priority to hire qualified Racine County residents, minorities or people of color, women and veterans.

**Workforce Inclusion Goals**

	<b>Professional Services</b>	<b>Construction</b>
<b>Racine County Residents</b>	<b>10% Combined</b>	<b>30%</b>
<b>Racine County Residents from Approved Training Programs</b>		<b>15%</b>
<b>Minorities or People of Color*</b>	<b>25% Combined</b>	<b>25% Combined</b>
<b>Women</b>		
<b>Veterans</b>		

*\* Minorities or People of Color as defined: American Indian or Alaska Native – Asian – Black or African American – Hispanic or Latino – Native Hawaiian or Other Pacific Islander. Federal Register / Vol. 62, No. 10*

**Workforce Inclusion Compliance**

Trade Contractor will be required to substantiate workforce inclusion through certified payrolls. Certified payroll must include information regarding a worker’s address, city, state, zip code, county, gender, race/ethnicity and veteran status.

Racine County  
Secure Residential Care Center for Children and Youth

**ECONOMIC INCLUSION PLAN**

**Definitions**

- **Racine County-Based Businesses** means Racine County (below noted areas that fall within the Racine County Limits).
  - Cities of Burlington and Racine, Villages of Caledonia, Elmwood Park, Mount Pleasant, North Bay, Raymond, Rochester, Sturtevant, Union Grove, Waterford, Wind Point, and Yorkville, Towns of Burlington, Dover, Norway, and Waterford, and Unincorporated communities of Buena Park, Caldwell, Cedar Park, Eagle Lake Manor, Eagle Lake Terrace, Franksville, Honey Creek, Honey Lake, Husher, Ives Grove, Kansasville, North Cape, Raymond, Tichigan, Union Church, and Yorkville
  - The business must provide meaningful operational delivery of services with local employees and management at this location for a minimum of six months prior to proposal or bid submission. Functions can include but not be limited to operations, sales, supportive departments, equipment storage and the like. The business must also be registered with and have paid sales and other taxes to the Wisconsin Department of Revenue. Documentation to substantiate the location is required and must be verifiable through Wisconsin state agencies and other sources.
  - Supply Chain businesses are recognized as firms that provide materials and supplies, lease equipment, manufacture or fabricate products from raw materials or substantially alter the material or supplies obtained by the contractor/vendor, are Regular Dealers, and provide transportation services.
- **Professional Services** means services requiring specialized knowledge and skill, usually of a mental or intellectual nature and usually requiring a license, certification, or registration. Services include but are not limited to architectural, engineering, Surveying, Environmental Testing and Investigation, Commissioning, Exterior Enclosure Consultants and Economic Inclusion Compliance Tracking Agent.
- **Construction Services** means all aspects of constructing, fabricating, installing, erecting, and maintaining utilities and facilities of all types
- **Qualified Firm** means a firm that meets the requirements as defined for Racine County-based Business and/or Minority-Owned, Woman-Owned, Small, and Veteran-Owned Business Enterprises.
- **Racine County Residents from Approved Training Programs** means unemployed or underemployed graduates from First Choice Pre-Apprenticeship, Gateway Technical College, and WRTP/Big Step. Unemployed / Underemployed means as defined by Racine County as households that fall in the FY2020 Income Limit Categories of Extremely Low, Very Low and Low as compared to the FY2020 Median Family Income Limit established for the Racine County Area (reference Table A).

**Racine County  
Secure Residential Care Center for Children and Youth**

**ECONOMIC INCLUSION PLAN**

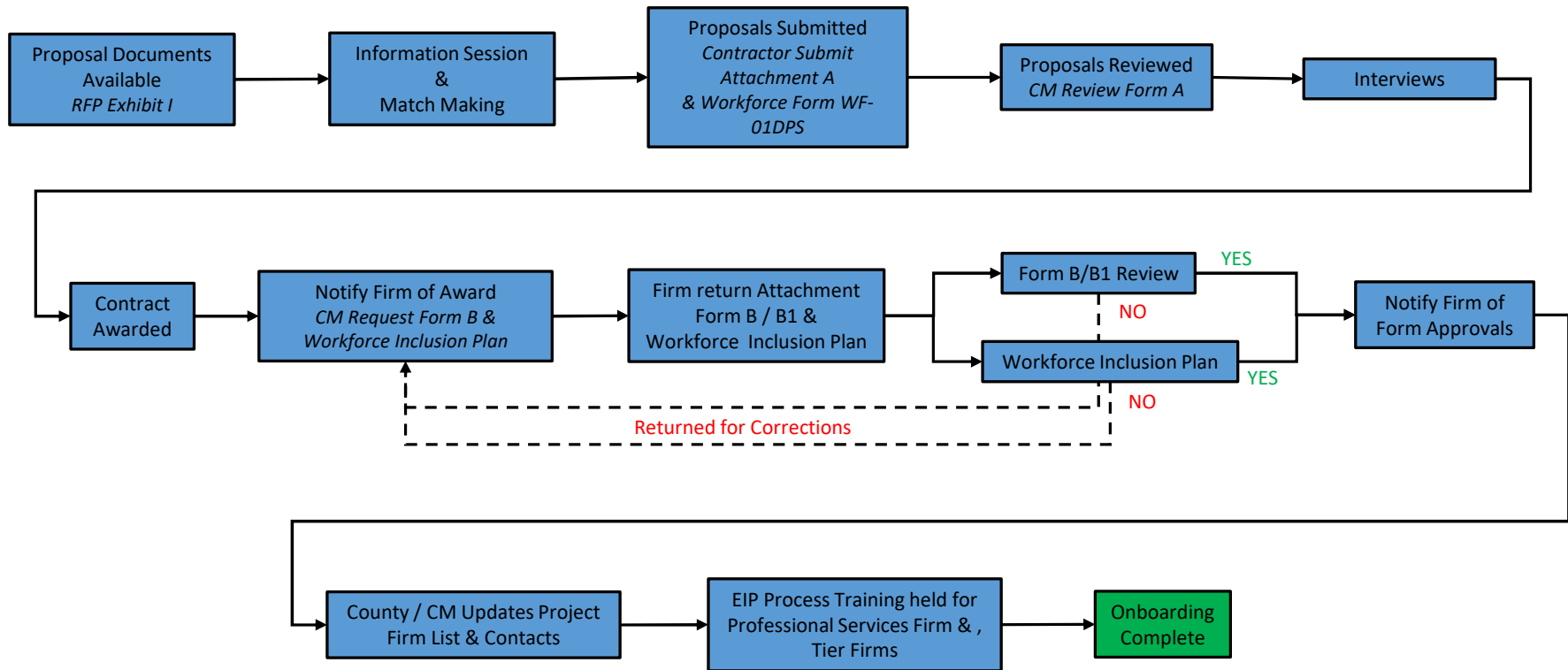
Table A

FY 2020 Income Limit Area	Median Family Income		FY 2020 Income Limit Category	Persons in Family							
	Top of Form	Bottom of Form		1	2	3	4	5	6	7	8
Racine, WI MSA	\$84,600	<b>Very Low (50%) Income Limits (\$)</b>									
		Top of Form	26,950	30,800	34,650	<b>38,450</b>	41,550	44,650	47,700	50,800	
		Bottom of Form									
		<b>Extremely Low Income Limits (\$)*</b>									
		Top of Form	16,150	18,450	21,720	<b>26,200</b>	30,680	35,160	39,640	44,120	
		Bottom of Form									
		<b>Low (80%) Income Limits (\$)</b>									
		Top of Form	43,050	49,200	55,350	<b>61,500</b>	66,450	71,350	76,300	81,200	
		Bottom of Form									

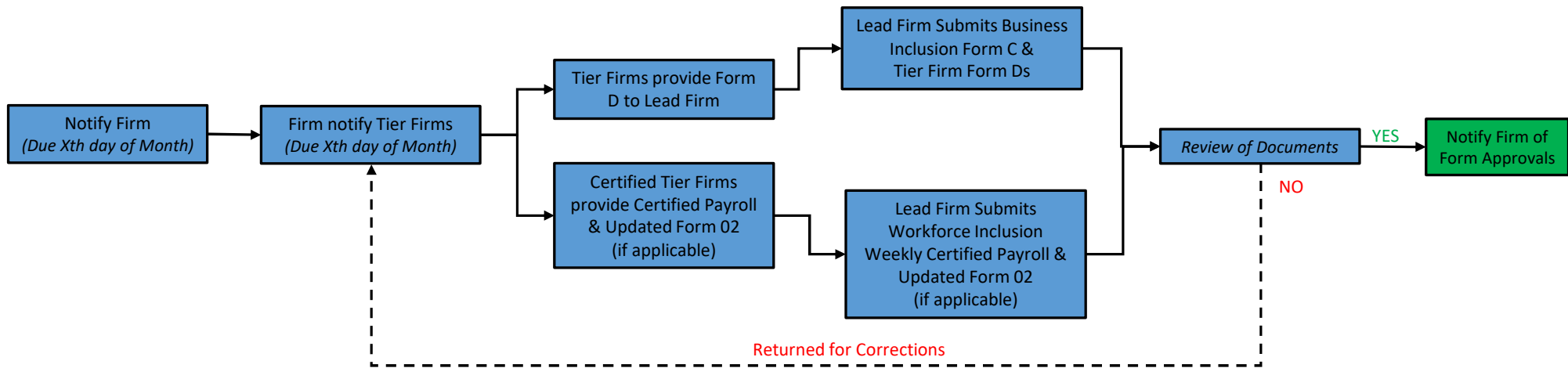
The **Racine, WI MSA** contains the following areas: Racine County, WI;

\* The FY 2014 Consolidated Appropriations Act changed the definition of extremely low-income to be the greater of 30/50ths (60 percent) of the Section 8 very low-income limit or the poverty guideline as [established by the Department of Health and Human Services \(HHS\)](#), provided that this amount is not greater than the Section 8 50% very low-income limit. Consequently, the extremely low-income limits may equal the very low (50%) income limits.

Income Limit areas are based on FY 2020 Fair Market Rent (FMR) areas. For information on FMRs, please see our associated FY 2020 [Fair Market Rent documentation system](#).

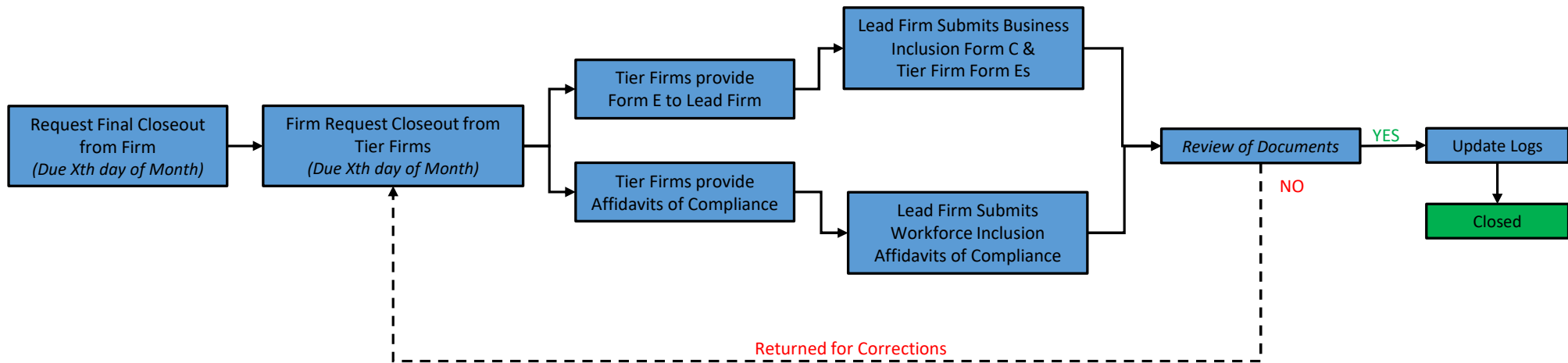


## Commitment & Validation Process – Professional Services



## Monthly Reporting Process – Professional Services





## EIP Closeout Process – Professional Services

Racine County  
Secure Residential Care Center for Children and Youth

**ECONOMIC INCLUSION PLAN**

**STATEMENT OF INTENT**

**("ATTACHMENT A")**

**Letter of Intent from Business to Perform as Trade Contractor or Professional Services Firm**

**RFP/BID RELEASE #:** \_\_\_\_\_

---

Name of Project: Racine County Secure Residential Care Center for Children and Youth (Racine County SRCCCY)

Project Number: \_\_\_\_\_

---

(Legal Business Name)

---

(Full Business Address)

The undersigned intends to perform work in connection with the above-referenced project as (check one):

\_\_\_\_\_ a Sole Proprietor      \_\_\_\_\_ a Corporation

\_\_\_\_\_ a Partnership      \_\_\_\_\_ a Joint Venture

The business status of the undersigned is confirmed by the attached Letter of Certification, effective \_\_\_\_\_. In addition, in the case where the undersigned is a Joint Venture, provide a copy of Joint Venture Agreement.

The undersigned is prepared to provide the following described services or supply the following described goods in connection with the above-named project:

\_\_\_\_\_  
\_\_\_\_\_  
\_\_\_\_\_

The above described services or goods are offered for the following price, with terms of payment as stipulated in the Contract Documents: \$ \_\_\_\_\_

**PARTIAL PAY ITEMS**

For any of the above items which are partial pay items, specifically describe the work and subcontract dollar amount:

\_\_\_\_\_  
\_\_\_\_\_  
\_\_\_\_\_

If more space is needed to fully describe the business firm's proposed scope of work and/or payment schedule, attach additional sheet(s).

**Racine County  
Secure Residential Care Center for Children and Youth**

**ECONOMIC INCLUSION PLAN  
STATEMENT OF INTENT  
("ATTACHMENT A")**

**Letter of Intent from Business to Perform as Trade Contractor or Professional Services Firm**

**RFP/BID RELEASE #:** \_\_\_\_\_

**SUB-SUBCONTRACTING LEVEL COMMITMENTS**

\_\_\_\_\_ % of the dollar value of the business trade contracts or professional services agreements that will be awarded by contract and/or purchase order to **Racine County-based** business contractors or professional services firms.

\_\_\_\_\_ % of the dollar value of the business trade contracts or professional services agreements that will be awarded by contract and/or purchase order to **Targeted Business** contractors or professional services firms.

\_\_\_\_\_ % of the dollar value of the business trade contracts or professional services agreements that will be awarded by contract and/or purchase order to **non-Racine County based** business contractors.

If business subcontractor will not be sub-subcontracting any of the work described in this Letter of Intent, a zero (0) must be filled in each blank above. If more than 10% percent of the value of the business subcontractor's scope of work will be sublet, a brief explanation and description of the work to be sublet must be provided.

I declare and affirm that to the best of my knowledge, information, and belief, the facts and representations set forth in this document are true and correct and no material facts have been omitted.

By:

\_\_\_\_\_  
Business Name (Print)

\_\_\_\_\_  
Authorized Representative's Signature

\_\_\_\_\_  
Date

\_\_\_\_\_  
Authorized Representative's Name (Print)

\_\_\_\_\_  
Phone

\_\_\_\_\_  
Authorized Representative's Title (Print)

Check all that apply:     Racine County based     MBE     WBE     SBE  
                                   Veteran Owned                                    Non-Racine County based

**IF APPLICABLE**

By:

\_\_\_\_\_  
JV Partner Company Name (Print)

\_\_\_\_\_  
Authorized Representative's Signature

\_\_\_\_\_  
Date

\_\_\_\_\_  
Authorized Representative's Name (Print)

\_\_\_\_\_  
Phone

\_\_\_\_\_  
Authorized Representative's Title (Print)

**Racine County  
Secure Residential Care Center for Children and Youth**

**ECONOMIC INCLUSION PLAN  
Workforce Inclusion Commitment  
(Form WF-01DPS)**

**DESIGN & PROFESSIONAL SERVICES**

**This form must be submitted at time of proposal or bid submission**

**Table A. Minimum commitment of Prime Professional Services Provider**

	Minimum participation requirements of SRCCY contract holder	
COMMITMENT	RACINE COUNTY (%)	MINORITIES or PEOPLE OF COLOR WOMEN VETERANS (%)
	10%	25% Combined

**Table B. Firm Name: \_\_\_\_\_**

	Minimum workforce inclusion commitment if awarded a contract	
Estimated Total Workforce Hours: _____	RACINE COUNTY (%)	MINORITIES or PEOPLE OF COLOR WOMEN VETERANS (%)
_____ % Hours	_____ %	_____ %

Submitted by:

\_\_\_\_\_  
COMPANY NAME

\_\_\_\_\_  
NAME (PRINT)

\_\_\_\_\_  
TITLE

\_\_\_\_\_  
EMAIL ADDRESS

\_\_\_\_\_  
PHONE

\_\_\_\_\_  
SIGNATURE

\_\_\_\_\_  
DATE