



## Racine County Resource Network (RCRN)

*- working together to strengthen families and individuals*



### Invitation to Participate in [Resilient Wisconsin Partnership Assessment](#)



The Wisconsin Department of Health Services Division of Public Health (DPH) and Association of State and Territorial Health Officials (ASTHO) invites you to participate in the Resilient Wisconsin Partnership Assessment. Your participation in the survey will help DPH identify current partnerships and partnership needs, which will inform Resilient Wisconsin's prevention strategies and statewide coordination efforts around preventing and addressing adverse childhood experiences (ACEs). Because our work has become more virtual, now seems like a great time to learn more about how to strengthen partnerships given our current landscape.

[Please click here](#) to read the entire letter and to participate.

### Virtual VITA!

In order to still provide tax assistance to Racine County taxpayers, we are offering virtual VITA through October 9th!

In partnership with [getyourrefund.org](http://getyourrefund.org), the VITA program through United Way of Racine County is offering a safe and secure way for taxpayers to virtually submit their tax documents and work with certified VITA volunteers.

Visit [www.unitedwayracine.org/vita](http://www.unitedwayracine.org/vita) for more information and to start the process.

### [Governor Evers - State Mask Mandate](#)

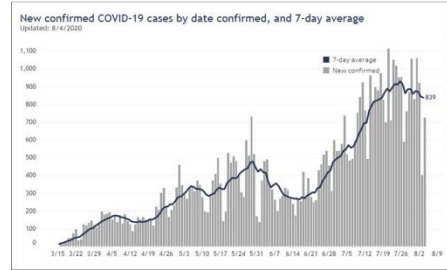
Gov. Tony Evers has declared a Public Health Emergency and issued an Emergency Order requiring individuals to wear face coverings when indoors and not in a private residence. The order took effect on Saturday, August 1, 2020, and will expire on September 28, 2020 or by a subsequent superseding order. Executive Order #82 declaring a public health

emergency is available [here](#) and Emergency Order #1 requiring face coverings statewide is available [here](#).

To read the full press release, click on the title above, or [click here](#).

To see additional press releases and other communications from the Governor's office, go to: <https://evers.wi.gov/Pages/Newsroom/Press-Releases.aspx>.

Gov. Tony Evers has declared a Public Health Emergency and issued an Emergency Order requiring individuals to wear face coverings when indoors and not in a private residence, with some exceptions as clarified and defined in the order. The order took effect at 12:01 a.m. on Saturday, August 1, 2020, and will expire on September 30, 2020 or by subsequent superseding order. Read [Wisconsin Order 88](#) declaring a public health emergency and [Emergency Order #1](#) requiring face coverings statewide for full details.



## [2020 Census – Final Contest!](#)

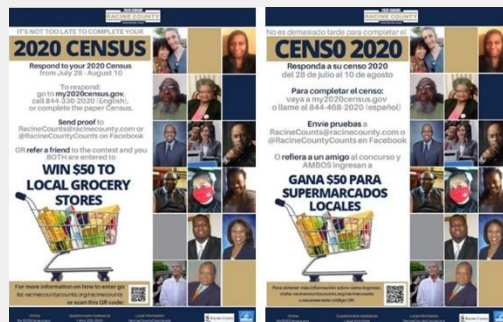
It's not too late! Complete your 2020 Census survey online between July 28th and August 10th and you will be entered into the contest to win \$50 to local grocery stores!

To enter, go to: [my2020census.gov](http://my2020census.gov)

Or call: (844) 330-2020 - for English  
(844) 468-2020 - for Spanish

Or, complete the paper survey received in the mail.

You must provide proof that you have completed the survey upon completion. For more details on how to enter, go to [www.racinecountycounts.org/racinecounts](http://www.racinecountycounts.org/racinecounts), or scan the QR code from the flyer.



## [The ARC of Racine County – Seeking a Part Time Program Coordinator](#)

The ARC of Racine County is looking for a part time Program Coordinator to manage, coordinate, and provide direct services to people with intellectual and/or developmental disabilities and their families as it relates to special education, advocacy and support; and to develop and lead community transition and educational workshops focused on self-advocacy for teens and adults.



The ARC is seeking a part time Program Manager. Click the logo to see the job description now.

Please click on the link in the title to see the attached job description. If interested, apply by sending a resume to [pforeman@thearcofracine.org](mailto:pforeman@thearcofracine.org).

## [SEL Webinars to Support Teachers](#)



For all those in education, there are some upcoming SEL (social & emotional learning) webinars to support you for the upcoming school year. Feel free to check them out and attend those that would be helpful. If you are not able to attend, please register anyway. You will receive an email with a link to view the archived webinar online.

## [NAMI Webinar Series](#)

*NAMI Racine County would like to announce the beginning of its monthly Virtual Speaker Series. The series kicked off on Wednesday, July 29, at 6:00 pm with the topic, LGBTQ Mental Health, with panelists from the LGBT Center of SE Wisconsin.*

*The Virtual Series will run the 3rd Wednesday of each month. Topics will cover varied elements of mental health, self-care during COVID, and Suicide Prevention, among others.*

*To register for the virtual event, please email NAMI at [nsmart@namiracine.org](mailto:nsmart@namiracine.org) or [mgehring@namiracine.org](mailto:mgehring@namiracine.org) for a Zoom link. We look forward to offering this support resource and ending the stigma surrounding mental illness.*



**Announcing NAMI's Virtual Speaker Series**  
3rd Wednesday of each month  
6:00 pm  
Topics will cover varied elements of mental health, self-care during COVID, Suicide Prevention and more.  
To register for a virtual event, email NAMI at [nsmart@namiracine.org](mailto:nsmart@namiracine.org) or [mgehring@namiracine.org](mailto:mgehring@namiracine.org)  
A Zoom link will be sent to you prior to the event.  
We look forward to offering this support resource and ending the stigma surrounding mental illness.

## **New!** [COVID-19 Testing Sites:](#)

Additional Community COVID-19 Drive-thru Clinic conducted by the Wisconsin National Guard will be held at **Festival Hall, 5 Fifth St., Racine** on the following dates:

**Tues. – Thurs., Aug. 4-6, 10 am - 6 pm**  
**and**  
**Tues. – Thurs., Aug. 18-20, 10 am – 6 pm**



Click picture for a listing of current COVID Testing sites.

More details about these and additional community clinics will be released as information becomes available.

\* \* \* \* \*

### **Please Note:**

Beginning Monday, Aug. 3, the Wisconsin Department of Health Services is launching a COVID-19 Test Result Hotline for individuals tested at National Guard testing sites in Wisconsin. If you've been waiting more than five days for your results, or if you need a copy of your results, call the Wisconsin COVID-19 Results Line at (866) 419-6988. The COVID-19 Results Line is open Monday-Friday from 8 AM – 6 PM. The Results Line only provides test results for COVID-19 testing performed at National Guard testing sites in Wisconsin. Upon calling, you will need to provide the date of your test, the National Guard testing site you visited, your name, and your date of birth. Residents are asked to wait to call the results line until 5 days after your test. Results can also be mailed.

## **Remember – Links:**

[Mobile Market – August 2020](#)

[Wisconsin Home Energy Assistance Program Flyer](#) - Assistance Extended to Sept. 30th

[Additional Q & A About Cloth Face Covering](#) – An abundance of information!

[YWCA – Southeast Wisconsin Support Line](#) - Call for a little extra support

[Leadership Racine](#) – A RAMAC Program, Begins in Fall, 2020

[2020 Census - Be Counted!](#) – **Be Counted - It's not too late!**

---

## RCRN Quarterly Meeting - You're Invited!

RECONNECT Via Zoom on **Tuesday, September 15th, 8:30 am** with "those in the know!"

It's been a while since we all saw each other last February, so please use this opportunity to learn the newest, latest info affecting Wisconsin families.

Presenters will feature DCF - Department of Children & Families, Racine County's Child Care Certification Unit, and the Foster Care Program of Racine County.

The names of our presenters are Stephen Kalmar, Dan Garcia and Jessica Scheeler.

Our clients, customers, patients, guests, care-receivers, etc. need us now more than ever and this networking event is designed to help us share info quickly & efficiently in meaningful ways.

And via Zoom, we will be able to greet colleagues we haven't seen recently.

Please Register by clicking the link below.

[REGISTER](#)

---

\* \* \* \* \*

**Racine County Resource Network (RCRN)** promotes collaboration between service providers working to strengthen families and individuals. Join us for quarterly meetings that provide resource information, networking opportunities, and discussions.

For more information visit [www.racinecounty.com/outreach/](http://www.racinecounty.com/outreach/).  
Past RCRN Newsletters are posted on our webpage.

---

Not a subscriber?  
[Click here to join the Racine County Resource Network](#) to stay abreast of resources throughout our area.

Racine County | 1717 Taylor Avenue, Racine, WI 53403

[About our service provider](#)

Sent by [christine.henning@racinecounty.com](mailto:christine.henning@racinecounty.com) powered by



[Try email marketing for free today!](#)