

## Anderson, Julie

---

**From:** Tom Halter <thalter@wi.net>  
**Sent:** Tuesday, June 30, 2020 1:38 PM  
**To:** Anderson, Julie  
**Subject:** School zone signs

PLEASE NOTE: This email originated from outside of the organization. Do not click links or open attachments unless you recognize the sender and know the content is safe.

Julie,  
I am hoping you can help with a situation at North Cape School on Hwy K near 45. As a school board member of 30 years there, we have seen several accidents in front of school including a severe one last year with a teacher being rear ended. I think the signage in the area needs to be upgraded and much more visible in order to get people to slow down and drive cautiously near the school. I think we will also have much more car traffic this fall when school resumes since I think many parents will drive children rather than being on a school bus during this pandemic.

I hope this could get a priority review and possibly upgraded prior to September.

I would be happy to meet someone there anytime.

Also on another location, I think the Rochester Dam needs new danger signage across the Dam for canoes and kayaks facing north of the Dam.

Thank you  
Tom Halter  
414-491-4951

Sent from my iPad

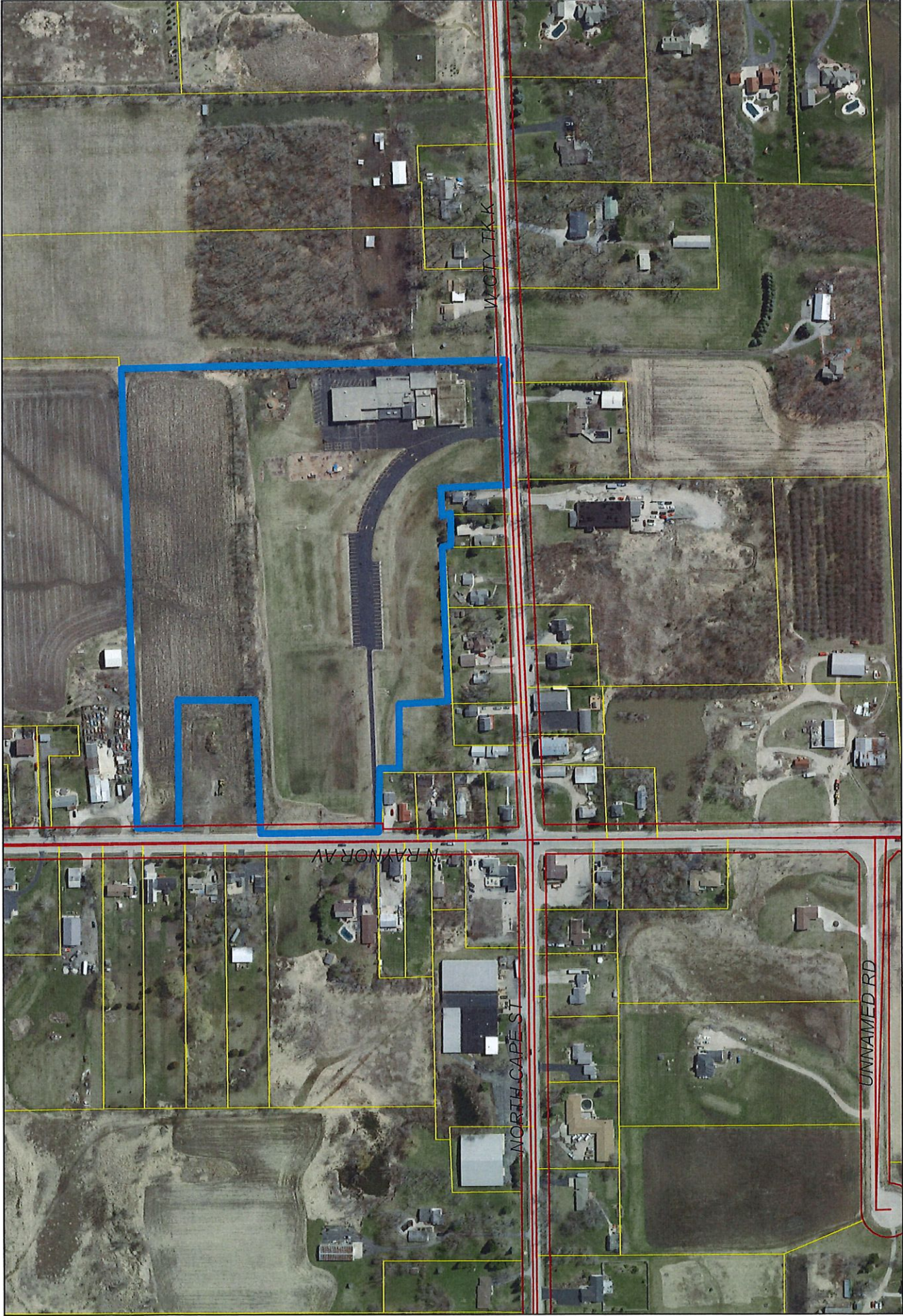


Sources: Esri, HERE, Garmin, USGS, Intermap, INCREMENT P, NRCan, Esri Japan, METI, Esri China (Hong Kong), Esri Korea, Esri (Thailand), NGCC, (c) OpenStreetMap contributors, and the GIS User Community

1 inch = 600 feet

North Cape School - Village of Raymond - 11926 CTH K





1 inch = 300 feet

North Cape School - Village of Raymond - 11926 CTH K

