



**ARC-INT ARCHITECTURE**  
 131 WEST SELESTH ST  
 MILWAUKEE, WISCONSIN  
 53214  
 #ARC-ARCHITECTURE.COM



**RECEIVED**

JUN 23 2020

RACINE COUNTY

PROJECT NO. 18000  
 HANGAR CONSTRUCTION  
 COMPANY  
 10000 WISCONSIN  
 53000  
 2000 N. WISCONSIN  
 53000

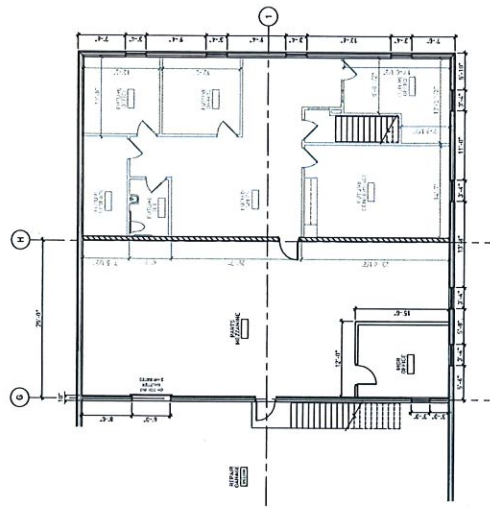
DATE: 06/15/2020  
 SCALE: 1/8" = 1'-0"

DESIGN REVIEW DOCUMENTS  
 20-006

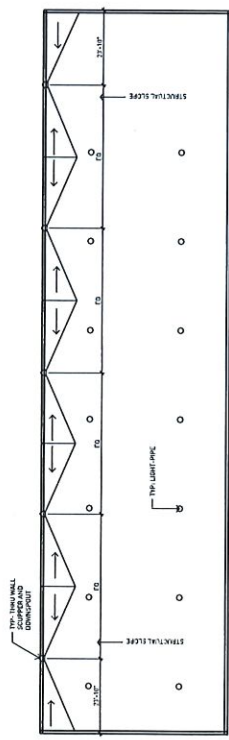
DATE: 06/15/2020

PROJECT TITLE  
 FLOOR PLAN  
 ROOF PLAN

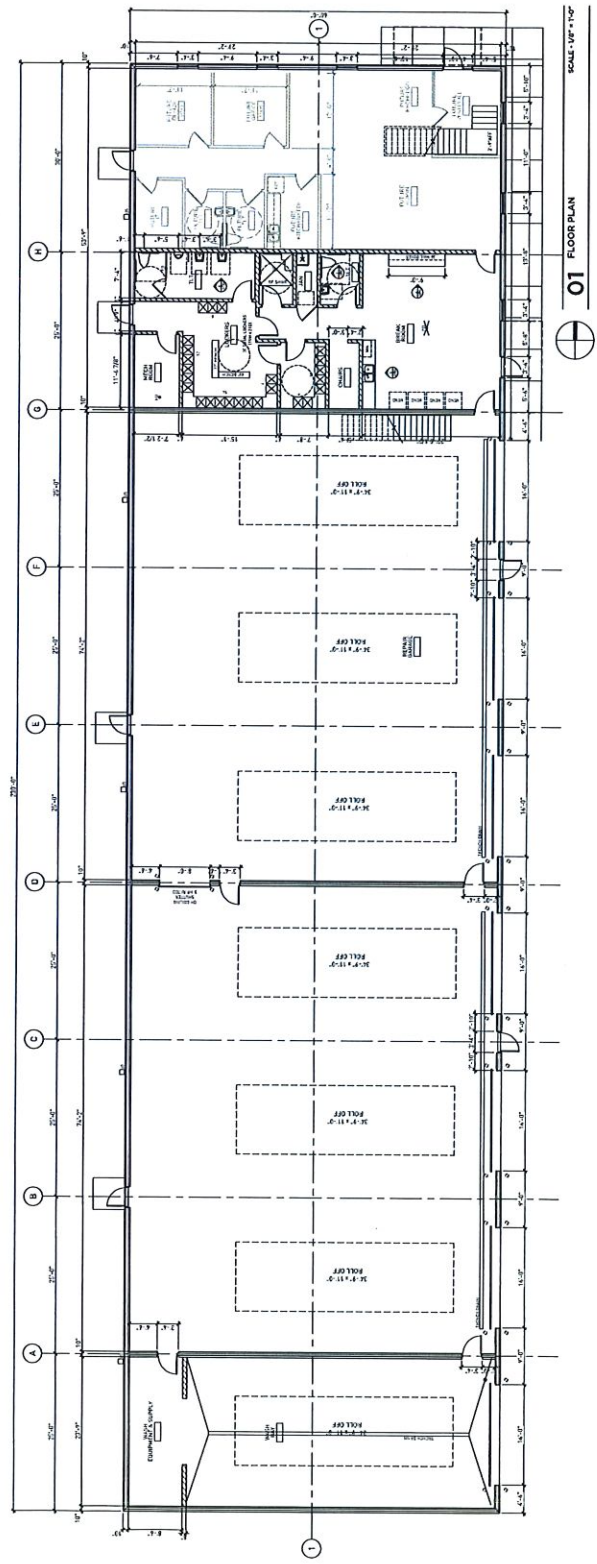
**A 200**



02 MEZZANINE PLAN  
 SCALE: 1/8" = 1'-0"



03 ROOF PLAN  
 SCALE: 1/8" = 1'-0"



01 FLOOR PLAN  
 SCALE: 1/8" = 1'-0"



**ARC-INT ARCHITECTURE**  
 131 WEST CEDARTH ST  
 MILWAUKEE, WISCONSIN 53233  
 414.961.1111  
 www.arc-int.com



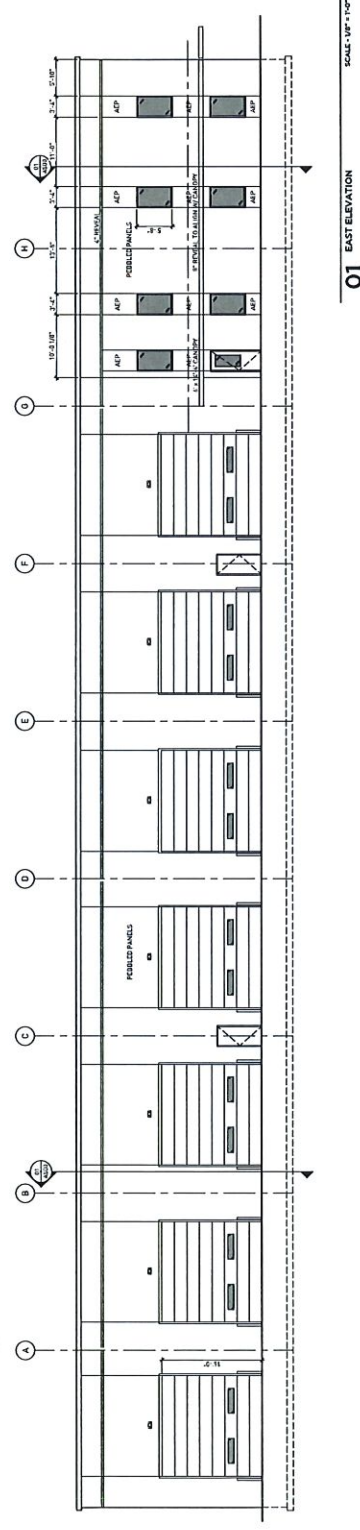
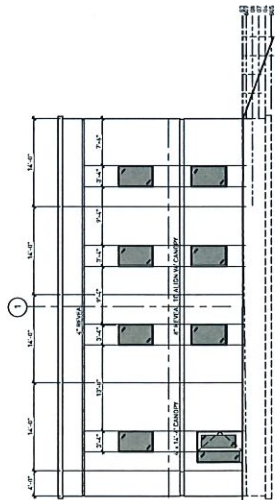
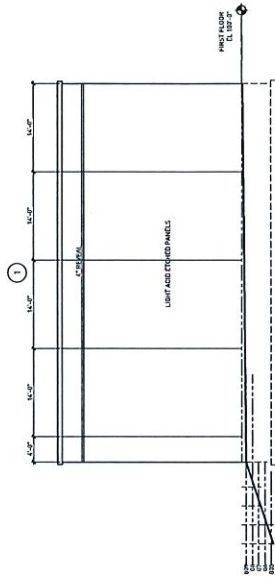
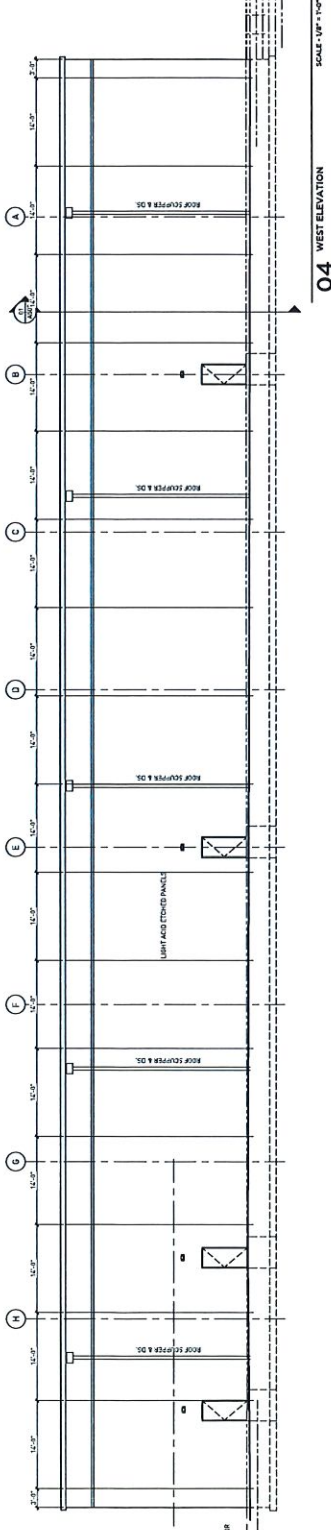
**RECEIVED**  
 JUN 23 2020  
 RACINE COUNTY

PROJECT: 15157  
 LOCATION: CONSTRUCTION  
 CLIENT: HUNTINGER BUILDERS  
 DESIGN: EXTERIOR  
 FACILITY: PERFORMANCE & REPAIR  
 DRAWING NO: 15157-0101  
 DATE: 05/20/2020  
 DRAWN BY: J. HUNTER  
 CHECKED BY: J. HUNTER

DESIGN REVIEW DOCUMENT  
 20-1004  
 05/20/2020

EXTERIOR ELEVATION  
 BASIS SECTION  
 05/20/2020

**A 40C**





**ARC-MX ARCHITECTURE**  
 131 WEST SEVENTH ST  
 MILWAUKEE, WISCONSIN  
 53210  
 arc-mx-architecture.com



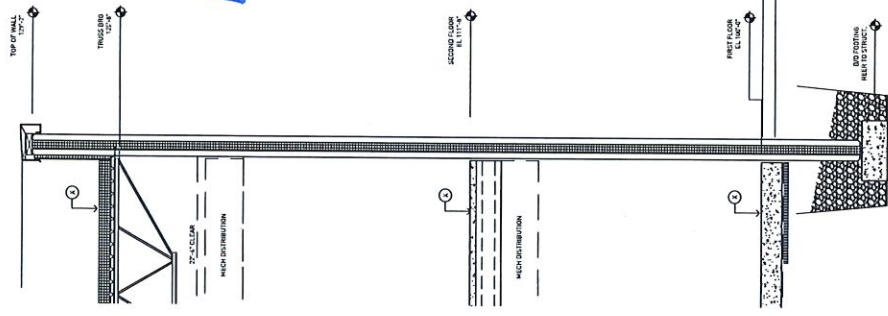
**RECEIVED**  
**JUN 23 2020**  
**RACINE COUNTY**

PROJECT NO. 18-004  
 CONTRACTOR: HANZINGER CONSTRUCTION COMPANY  
 ARCHITECT: ARC-MX ARCHITECTURE  
 DATE: 06/15/2020  
 DRAWING NO. 18-004-001

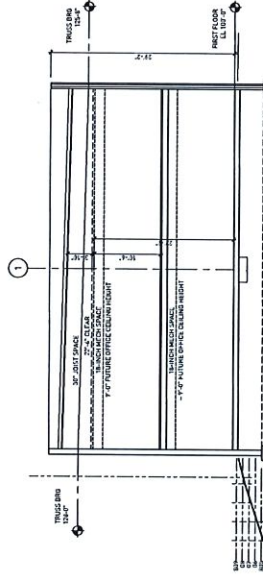
DESIGN REVIEW DOCUMENTS  
 DATE: 06/15/2020  
 SCALE: 1/8" = 1'-0"

THRU BUILDING & WALL SECTIONS  
 DATE: 06/15/2020  
 SCALE: 1/4" = 1'-0"

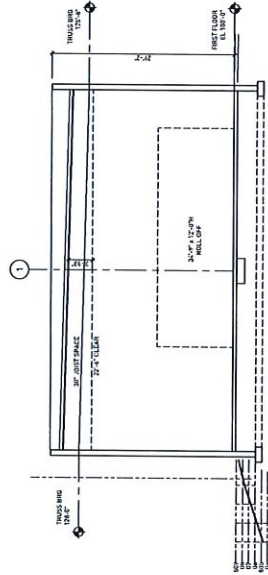
**A 500**



**01 TYPICAL WALL SECTION**  
 SCALE: 1/4" = 1'-0"



**03 TYPICAL BUILDING SECTION**  
**MEZZANINE**  
 SCALE: 1/8" = 1'-0"



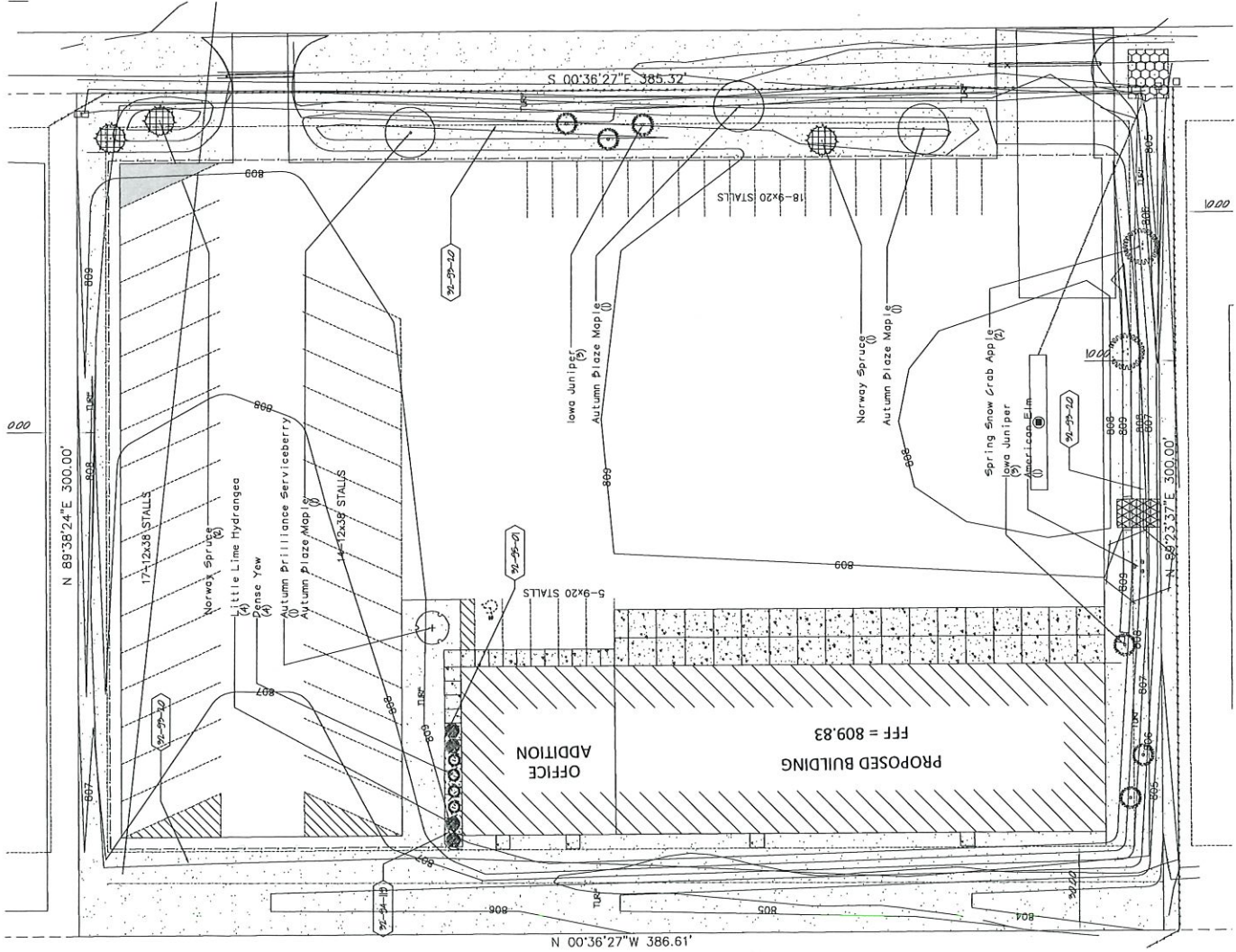
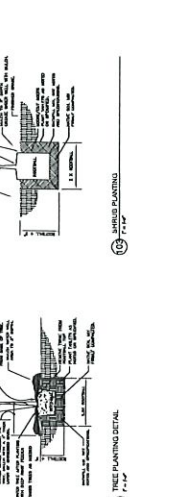
**02 TYPICAL BUILDING SECTION**  
**AT REPAIR GARAGE**  
 SCALE: 1/8" = 1'-0"

**PLANT SCHEDULE**

SYMBOL	COMMON NAME	SIZE	QUANTITY
(A)	Autumn Brilliance Serviceberry	12" Cal.	2
(B)	Autumn Blaze Maple	12" Cal.	2
(C)	Autumn Blaze Maple	12" Cal.	2
(D)	Autumn Blaze Maple	12" Cal.	2
(E)	Autumn Blaze Maple	12" Cal.	2
(F)	Autumn Blaze Maple	12" Cal.	2
(G)	Autumn Blaze Maple	12" Cal.	2
(H)	Autumn Blaze Maple	12" Cal.	2
(I)	Autumn Blaze Maple	12" Cal.	2
(J)	Autumn Blaze Maple	12" Cal.	2
(K)	Autumn Blaze Maple	12" Cal.	2
(L)	Autumn Blaze Maple	12" Cal.	2
(M)	Autumn Blaze Maple	12" Cal.	2
(N)	Autumn Blaze Maple	12" Cal.	2
(O)	Autumn Blaze Maple	12" Cal.	2
(P)	Autumn Blaze Maple	12" Cal.	2
(Q)	Autumn Blaze Maple	12" Cal.	2
(R)	Autumn Blaze Maple	12" Cal.	2
(S)	Autumn Blaze Maple	12" Cal.	2
(T)	Autumn Blaze Maple	12" Cal.	2
(U)	Autumn Blaze Maple	12" Cal.	2
(V)	Autumn Blaze Maple	12" Cal.	2
(W)	Autumn Blaze Maple	12" Cal.	2
(X)	Autumn Blaze Maple	12" Cal.	2
(Y)	Autumn Blaze Maple	12" Cal.	2
(Z)	Autumn Blaze Maple	12" Cal.	2

**REFERENCE NOTES - SCHEDULE**

1. (A) - 12" Cal. Autumn Brilliance Serviceberry
2. (B) - 12" Cal. Autumn Blaze Maple
3. (C) - 12" Cal. Autumn Blaze Maple
4. (D) - 12" Cal. Autumn Blaze Maple
5. (E) - 12" Cal. Autumn Blaze Maple
6. (F) - 12" Cal. Autumn Blaze Maple
7. (G) - 12" Cal. Autumn Blaze Maple
8. (H) - 12" Cal. Autumn Blaze Maple
9. (I) - 12" Cal. Autumn Blaze Maple
10. (J) - 12" Cal. Autumn Blaze Maple
11. (K) - 12" Cal. Autumn Blaze Maple
12. (L) - 12" Cal. Autumn Blaze Maple
13. (M) - 12" Cal. Autumn Blaze Maple
14. (N) - 12" Cal. Autumn Blaze Maple
15. (O) - 12" Cal. Autumn Blaze Maple
16. (P) - 12" Cal. Autumn Blaze Maple
17. (Q) - 12" Cal. Autumn Blaze Maple
18. (R) - 12" Cal. Autumn Blaze Maple
19. (S) - 12" Cal. Autumn Blaze Maple
20. (T) - 12" Cal. Autumn Blaze Maple
21. (U) - 12" Cal. Autumn Blaze Maple
22. (V) - 12" Cal. Autumn Blaze Maple
23. (W) - 12" Cal. Autumn Blaze Maple
24. (X) - 12" Cal. Autumn Blaze Maple
25. (Y) - 12" Cal. Autumn Blaze Maple
26. (Z) - 12" Cal. Autumn Blaze Maple



- GENERAL LANDSCAPE NOTES:**
1. Topsoil return to depth of 6" minimum is by excavating to 18" depth. Return topsoil to have no rock larger than 1". Contact general contractor if soil is not acceptable for proper plant growth.
  2. Verify quantity of plants with a hand tally of the plan.
  3. Landscape contractor is required to visit the site and review all civil plans related to the project. The contractor shall verify the quantity of plants and should not include # 2 grade trees, evergreens or shrubs. Landscape contractor is to verify plant quantities due to changes in the overall phase 1 landscape plan.
  4. Verify quantity of plant type, quantity or size must be approved by city forester.
  5. Planting beds shall receive steel edge, stone mulch, weed fabric, and annual beds to be 2" deep into the planting bed before installation of plants.
  6. Seeded lawn areas to have high quality Bluegrass and Fescue seed. Apply a 10-10-10 starter fertilizer after turf has germinated. Follow manufacturer's direction on fertilizer application rates.
  7. Apply mulch to be installed in a staggered fashion with high quality seed to be rolled and watered to a depth of 2-4" immediately upon laying of the turf. Stake sod on slopes of less than 3:1 ratio. Stake sod is not acceptable.

RECEIVED  
JUN 23 2020

RACINE COUNTY  
LANDSCAPE PLAN