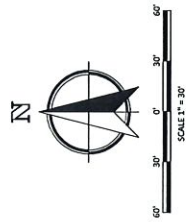




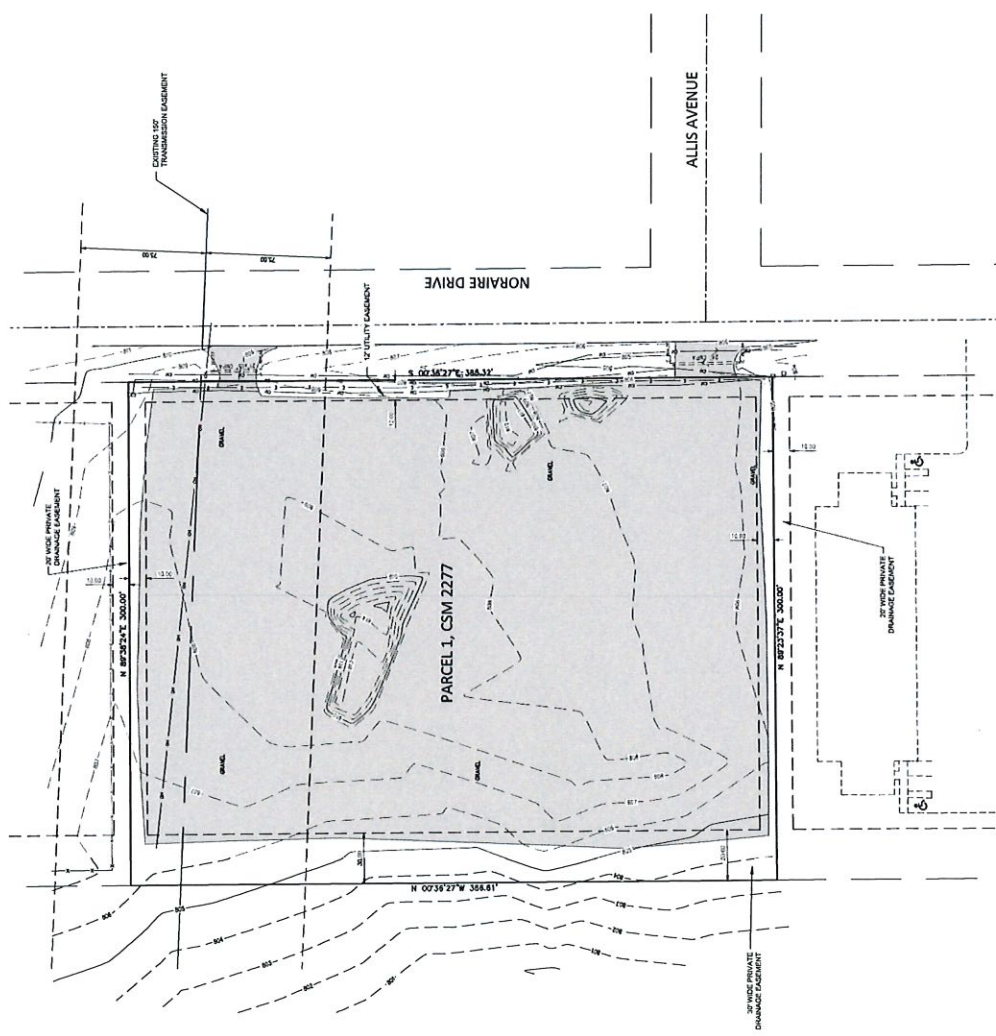
NO.	DATE	REVISION
1		
2		
3		
4		
5		
6		
7		
8		
9		
10		
11		
12		
13		
14		
15		
16		
17		
18		
19		
20		

TOWN OF NORWAY, RACINE COUNTY, WISCONSIN  
**EAGLE DISPOSAL INC.**  
 FOR  
**EXISTING CONDITIONS MAP**  
**7440 NORVAIRE DRIVE**

Nielsen Madsen + Barber  
 CIVIL ENGINEERS AND LAND SURVEYORS  
 1458 Horizon Blvd., Suite 200, Racine, WI, 53406  
 Tel: (262)634-5588 Website: www.nmbc.net



- LEGEND**
- EXISTING CONTOURS
  - - - PROPOSED CONTOURS
  - ▭ GRAVEL SURFACE

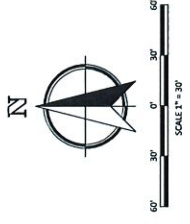


**RECEIVED**  
 JUN 23 2020  
 RACINE COUNTY



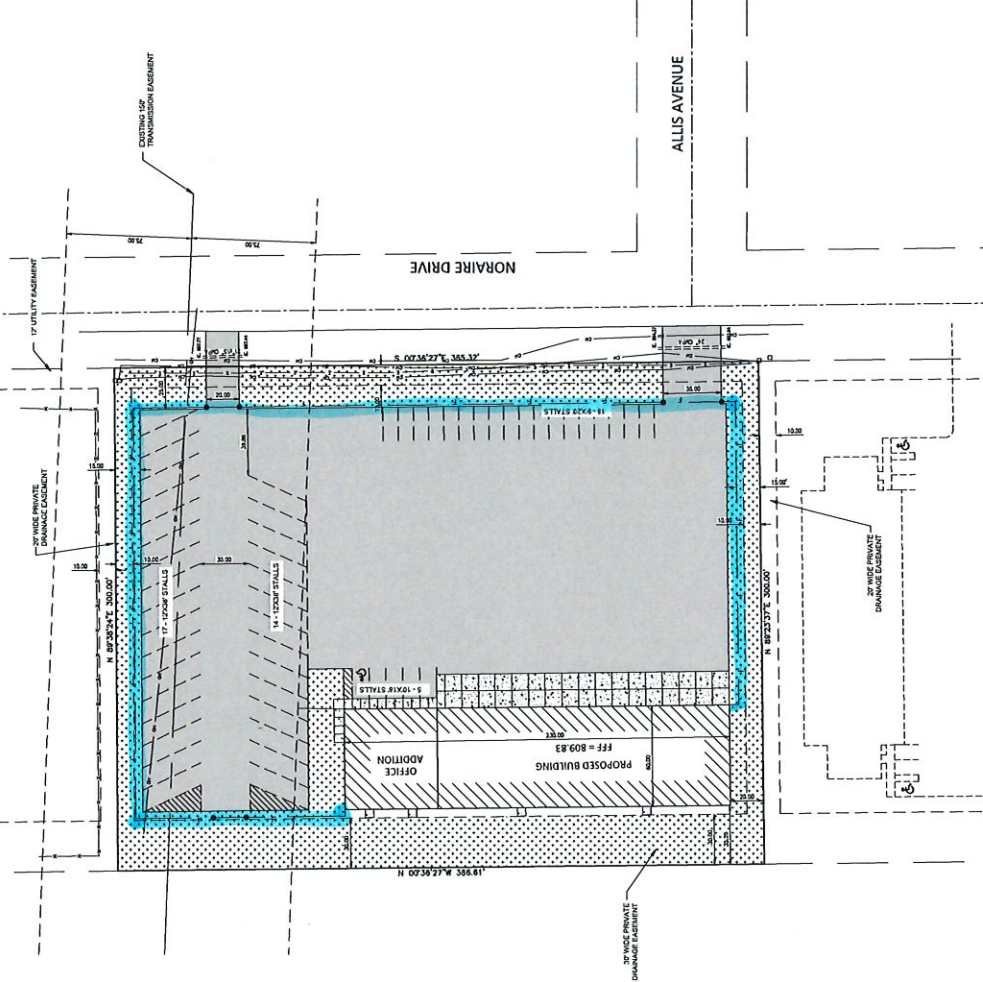
**UTILITY NOTE**  
 EXISTING UTILITIES ARE SHOWN FOR INFORMATIONAL PURPOSES ONLY AND NOT BEING VERIFIED. THE USER OF THIS MAP SHALL BE RESPONSIBLE FOR VERIFYING THE TYPE, LOCATION, SIZE AND DEPTH OF UTILITIES. CONTACT THE APPROPRIATE AGENCY FOR MORE INFORMATION AND TO AVOID DAMAGE TO UTILITIES. CONTRACTOR SHALL CALL 'DIGGERS HOTLINE' PRIOR TO ANY CONSTRUCTION.

SHEET  
**C-2**



= security fencing

- LEGEND**
- — — — EXISTING CONTOURS
  - — — — PROPOSED CONTOURS
  - — — — 702' CONCRETE PAVEMENT
  - — — — GRAVEL PAVEMENT
  - — — — LANDSCAPED AREAS



**UTILITY NOTE**

DISTING UTILITIES ARE SHOWN FOR INFORMATIONAL PURPOSES ONLY AND ARE NOT GUARANTEED TO BE ACCURATE. ALL UTILITIES CONTRACTORS ARE ADVISED THAT THE LOCATION AND DEPTH OF UTILITIES SHOWN ON THIS UNDERGROUND UTILITIES AS THIS PLAN IS NECESSARY FOR PROPOSED UTILITY CALL "DIGGERS NOTICE" PRIOR TO ANY CONSTRUCTION.



RECEIVED  
 JUN 23 2020  
 RACINE COUNTY

NO.	REVISION	DATE

PROJ. NAME: 7440 NORAIRE DRIVE  
 DRAFTED: 6-13-2020  
 CHECKED: JMM  
 DATE: 6-23-2020  
 2018.0194.02  
**SHEET**  
**C-3**

Nielsen Madsen + Barber  
 CIVIL ENGINEERS AND LAND SURVEYORS  
 1458 Horizon Blvd, Suite 200, Racine, WI, 53406  
 Tel: (262)634-5588 Website: www.nmbc.net

**mb**

**EAGLE DISPOSAL INC.**  
 TOWN OF NORWICH, RACINE COUNTY, WISCONSIN  
**7440 NORAIRE DRIVE**  
**SITE PLAN**





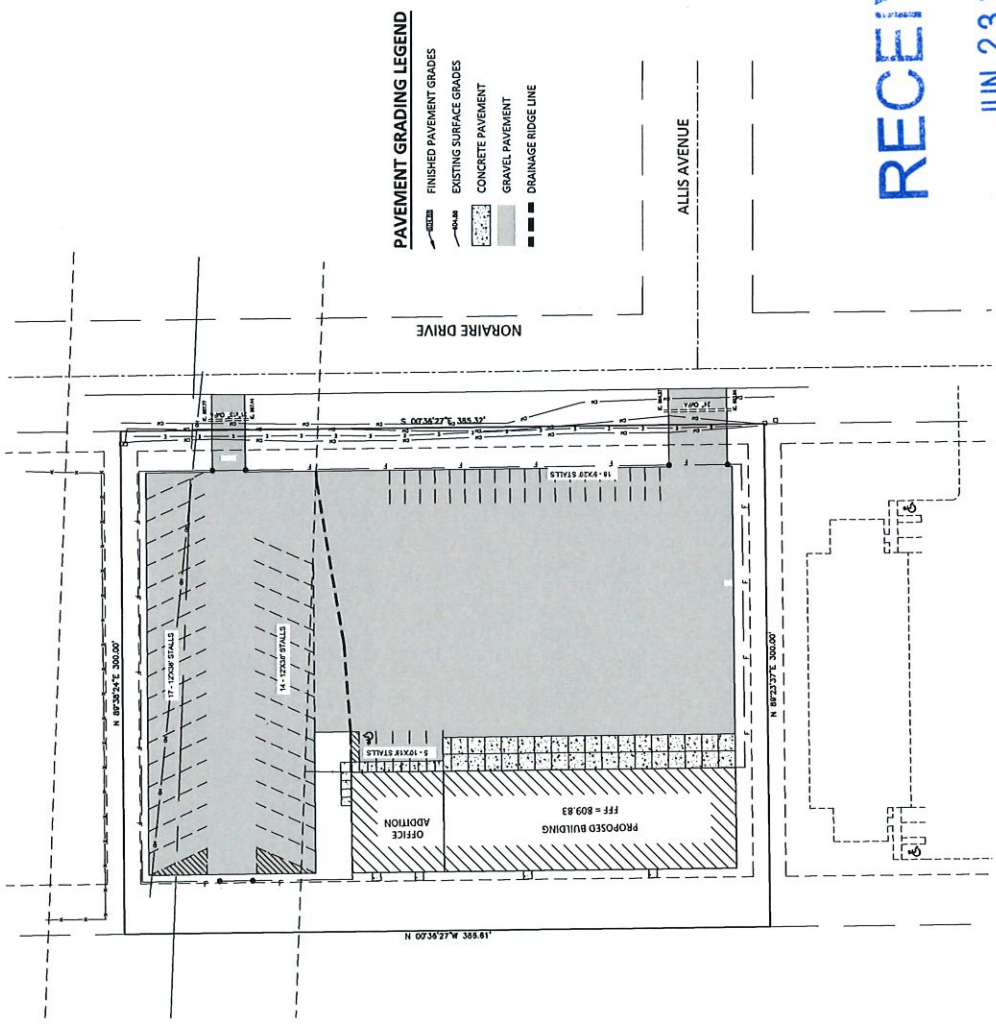
**UTILITY NOTE**  
 EXISTING UTILITIES SHOWN FOR INFORMATIONAL PURPOSES ONLY AND ARE NOT GUARANTEED TO BE ACCURATE. ALL INCLUDING CONTRACTORS SHALL VERIFY ALL EXISTING UTILITIES PRIOR TO ANY CONSTRUCTION. ANY UNIDENTIFIED UTILITIES AS THEY BECOME NECESSARY FOR PROPOSED UTILITY WORK SHALL BE IDENTIFIED AND DELETED FROM THE PLAN SET PRIOR TO ANY CONSTRUCTION. CALL "DIGGERS HOTLINE" PRIOR TO ANY CONSTRUCTION.



**RACINE COUNTY**

JUN 23 2020

**RECEIVED**



- PAVEMENT GRADING LEGEND**
- FINISHED PAVEMENT GRADES
  - EXISTING SURFACE GRADES
  - CONCRETE PAVEMENT
  - GRAVEL PAVEMENT
  - DRAINAGE RIDGE LINE

NO	DATE	REVISION

SHEET **C-5**  
 2018.0194.02

PROJECT NO.:  
 DRAWN BY: J. GARDNER  
 CHECKED BY:  
 DATE: 6-23-2020

**PAVEMENT SPECIFICATIONS**

RESURFACING SHALL BE IN ACCORDANCE WITH THE REQUIREMENTS OF SECTION 65.12 OF THE STATE SPECIFICATIONS FOR HIGHWAY CONSTRUCTION. THE COMPLETED BASE SHALL BE IN ACCORDANCE WITH THE TYPICAL SECTIONS 411.1 AND 411.2 OF THE STATE SPECIFICATIONS. THE SUBGRADE SHALL BE IN ACCORDANCE WITH THE TYPICAL SECTION 411.2 OF THE STATE SPECIFICATIONS. CONCRETE FOR DRIVEWAYS, SIDEWALKS, CURBS, OUTLETS AND DRIVEWAY APPROACHES SHALL BE SPREAD A.P.A. FINISHES, AS SPECIFIED IN SECTION 601.31 OF THE STATE SPECIFICATIONS. ALL WORK SHALL BE DONE IN ACCORDANCE WITH THE REQUIREMENTS OF SUBSECTION 412.2 OF THE STATE SPECIFICATIONS.

**7440 NORRAIRE DRIVE**  
**PAVEMENT PLAN**  
 FOR  
**EAGLE DISPOSAL INC.**  
 TOWN OF NORWAY, RACINE COUNTY, WISCONSIN

**Nielsen Madsen + Barber**  
 CIVIL ENGINEERS AND LAND SURVEYORS  
 1455 Horton Blvd. Suite 200, Racine, WI 53406  
 Tel: (262)634-5588 Website: www.nmbc.net

**REFERENCES**

2005 EDITION OF THE STANDARD SPECIFICATIONS FOR HIGHWAYS WITH THE COMMENTS, 2005 EDITION, UNLESS REFERRED TO AS "STATE SPECIFICATIONS". THE CURRENT EDITION OF THE STATE SPECIFICATIONS IS AVAILABLE ON THE WISCONSIN DEPARTMENT OF TRANSPORTATION WEBSITE.



**GENERAL NOTES**

1. ALL WORK SHALL BE DONE IN ACCORDANCE WITH THE TYPICAL SECTIONS 411.1 AND 411.2 OF THE STATE SPECIFICATIONS. THE SUBGRADE SHALL BE IN ACCORDANCE WITH THE TYPICAL SECTION 411.2 OF THE STATE SPECIFICATIONS. CONCRETE FOR DRIVEWAYS, SIDEWALKS, CURBS, OUTLETS AND DRIVEWAY APPROACHES SHALL BE SPREAD A.P.A. FINISHES, AS SPECIFIED IN SECTION 601.31 OF THE STATE SPECIFICATIONS. ALL WORK SHALL BE DONE IN ACCORDANCE WITH THE REQUIREMENTS OF SUBSECTION 412.2 OF THE STATE SPECIFICATIONS.

**DEMOLITION NOTES**

1. AT THE COMPLETION OF THE PROJECT THE CONTRACTOR SHALL REMOVE AND DISPOSE OF ALL EXISTING CONCRETE DRIVEWAYS, SIDEWALKS, CURBS, OUTLETS AND DRIVEWAY APPROACHES. THE CONTRACTOR SHALL BE RESPONSIBLE FOR OBTAINING NECESSARY PERMITS TO REMAIN IN PLACE SHALL BE REPAIRED OR REPLACED AT THE CONTRACTORS EXPENSE AT NO ADDITIONAL COST TO THE OWNER.

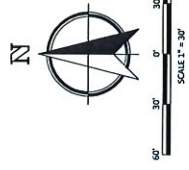


PROJ. NO. 18107  
 DRAFTER: J.S.M.  
 CHECKED: J.S.M.  
 DATE: 6-23-2020  
 2018.0194.02

NO.	REVISION	BY	DATE

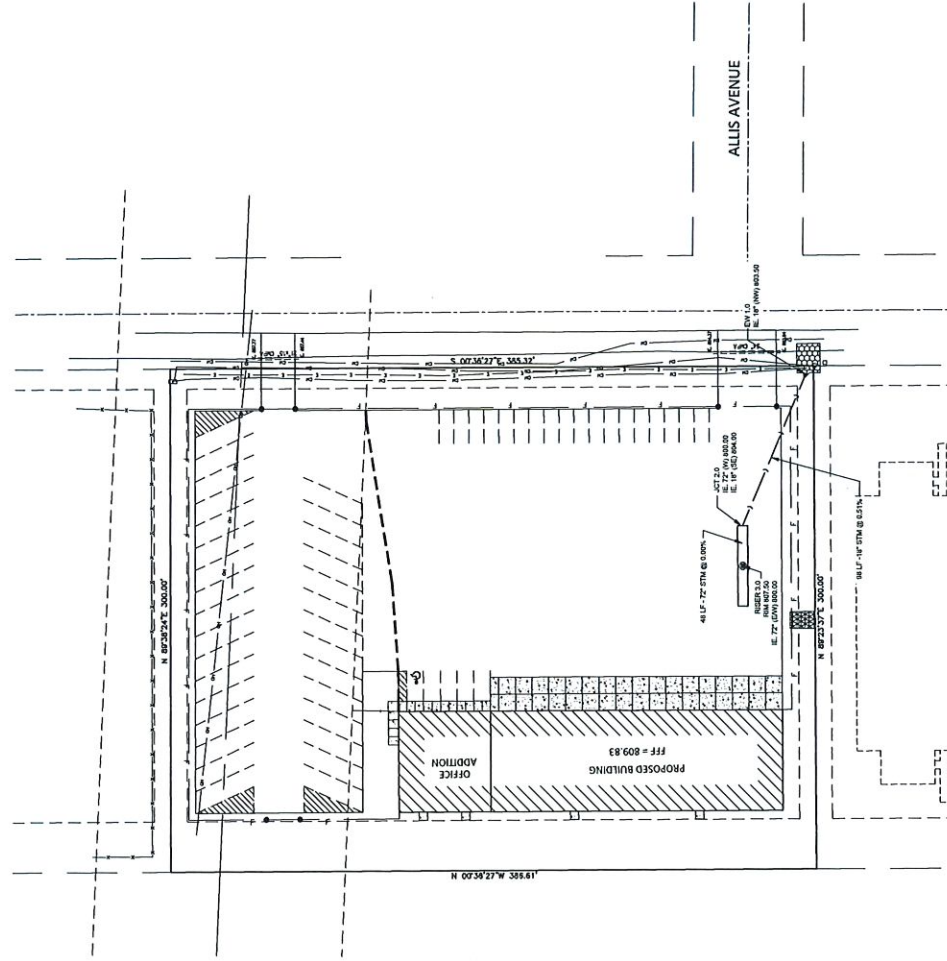
7440 NORRAIRE DRIVE  
 STORM SEWER DESIGN PLAN  
 EAGLE DISPOSAL INC.  
 TOWN OF NORWAY, RACINE COUNTY, WISCONSIN

Nielsen Madsen + Barber  
 CIVIL ENGINEERS AND LAND SURVEYORS  
 1458 Horizon Blvd, Suite 200, Racine, WI, 53406  
 Tel: (262) 634-5588 Website: www.nmbtc.net



**STORM SEWER DESIGN LEGEND**

- PROPOSED STORM SEWER
- - - PROPOSED RIDGE LINE
- ▨ MEDIUM RIP RAP
- ▩ PYRAMAT



**STORM SEWER/CULVERT SPECIFICATIONS**

- MATERIAL FOR THE STORM SEWER AND CULVERT SHALL BE IN ACCORDANCE WITH THE STATE OF WISCONSIN DEPARTMENT OF SAFETY AND PROFESSIONAL SERVICES (SPS) AND TOWN OF NORWAY SPECIFICATIONS.
- STORM SEWER AND CULVERT CONSTRUCTION SHALL BE COMPLETED IN ACCORDANCE WITH THE "STANDARD SPECIFICATIONS FOR CONSTRUCTION" WITH EDITION, DECEMBER 21, 2005 WITH ADDENDUM NO. 1 AND NO. 2, HEREIN REFERRED TO AS THE "STANDARD SPECIFICATIONS".
- BEDDING AND COVER MATERIAL SHALL BE SAND, CRUSHED STONE CHIPS OR CRUSHED STONE SCREENINGS CONFORMING TO CHAPTER 4.32 OF THE "STANDARD SPECIFICATIONS".
- ALL STORM SEWERS AND CULVERTS INSTALLED IN EXISTING OR PROPOSED PAVED AREAS SHALL BE BACKFILLED WITH GRANULAR MATERIAL TO A MINIMUM OF FIVE FEET TO OUTSIDE OF THE PAVEMENT LIMITS. THEREAFTER RUNNING BACKFILL MATERIAL SHALL EXTEND A MINIMUM OF FIVE FEET FROM THE EDGE OF PAVEMENT SHALL ALSO REQUIRE COMPACTED GRANULAR BACKFILL TO A DEPTH OF FIVE FEET (5') FROM THE EDGE OF PAVEMENT SHALL ALSO REQUIRE COMPACTED GRANULAR BACKFILL.
- AT THE COMPLETION OF THE PROJECT THE CONTRACTOR SHALL REMOVE AND DISPOSE OF ALL EXCESS, WASTE, SPOOLED AND SPILL MATERIAL IN ACCORDANCE WITH SECTION 203.3.12 OF THE "STATE SPECIFICATIONS". THIS WORK SHALL BE DONE AT THE CONTRACTOR'S EXPENSE.

**STORM WATER MAINTENANCE PLAN**

- THE STORM WATER DRAINAGE / WATER QUALITY SYSTEM BEING INSTALLED AS PART OF THIS DEVELOPMENT SHALL BE INSPECTED ON A SEMIANNUAL BASIS.
- AS PART OF THE INSPECTION, ANY SILT, SEDIMENT OR DEBRIS BUILT UP IN THE BOTTOM OF THE STRUCTURE SHALL BE REMOVED AND DISPOSED OF.
- IF EXCESSIVE AMOUNTS OF SILT, SEDIMENT OR DEBRIS ARE PRESENT, THE MAINTENANCE SCHEDULE SHALL BE ADJUSTED ACCORDINGLY OR A PAID MAINTENANCE CONTRACTOR SHALL BE APPOINTED TO MAINTAIN THE SYSTEM, LOCUS AND ENTERING THE STORM WATER DRAINAGE/WATER QUALITY SYSTEM.
- THE PROPERTY OWNER IS ULTIMATELY RESPONSIBLE FOR ENSURING THAT THE STORM WATER LEAVING THE SITE IS AS CLEAN AS PRACTICABLE.



**UTILITY NOTE**

EXISTING UTILITIES ARE SHOWN FOR INFORMATIONAL PURPOSES ONLY AND ARE NOT GUARANTEED TO BE ACCURATE. ALL INCLUSIVE CONTRACTORS SHALL VERIFY THE LOCATION AND DEPTH OF ALL UTILITIES PRIOR TO CONSTRUCTION. UNDEGROUND UTILITIES AS THEY RELATE TO THIS PROJECT ARE THE RESPONSIBILITY OF THE CONTRACTOR. CALL "DIGGERS PROTECTUS" PRIOR TO ANY CONSTRUCTION.

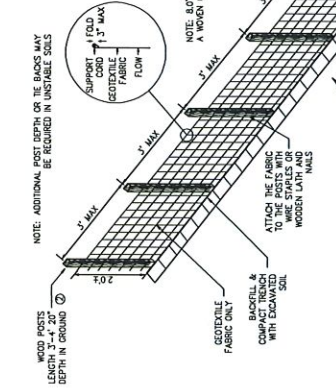
RECEIVED

JUN 23 2020

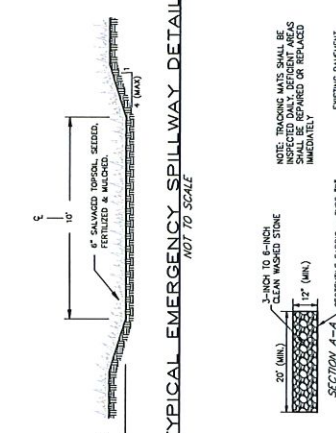
RACINE COUNTY

**GENERAL NOTES - SILT FENCE**

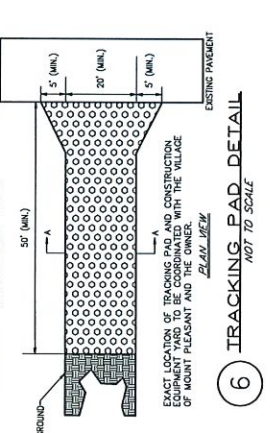
- TRENCH SHALL BE A MINIMUM OF 4" WIDE & 6" DEEP TO BURY AND PROTECT THE FIBER MESH. TRENCH AND BACKFILL TO BE COMPACTED TO 95% PROVED DENSITY.
- WOOD POSTS SHALL BE A MINIMUM SIZE OF 1 1/2" X 1 1/2" OF OAK OR REDWOOD. POSTS SHALL BE SPACED AT 10' MAXIMUM.
- CONSTRUCT SILT FENCE FROM A CONTINUOUS ROLL IF POSSIBLE BY CUTTING LENGTHS TO AVOID JOINTS. IF A JOINT IS NECESSARY USE ONE OF THE FOLLOWING METHODS:
  - TWO METHODS -- OVERLAP THE END POSTS AND THIST, OR ROTATE AT LEAST 180 DEGREES.
  - THIRD METHOD -- OVERLAP THE END POSTS AND THIST, OR ROTATE AT LEAST 180 DEGREES. FROM THE END OF EACH SILT FENCE LENGTH.
- NOTE: 6" POST SPACING ALLOWED IF USED A WOVEN GEOTEXTILE FABRIC IS USED.



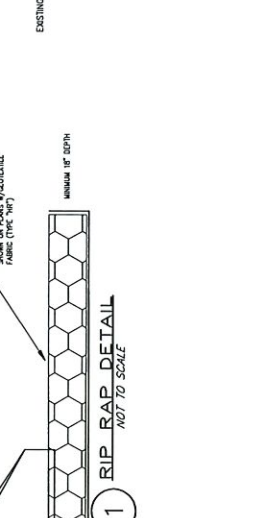
**1 RIP RAP DETAIL**  
 NOT TO SCALE



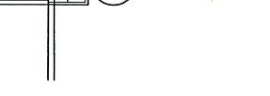
**2 TYPICAL EMERGENCY SPILLWAY DETAIL**  
 NOT TO SCALE



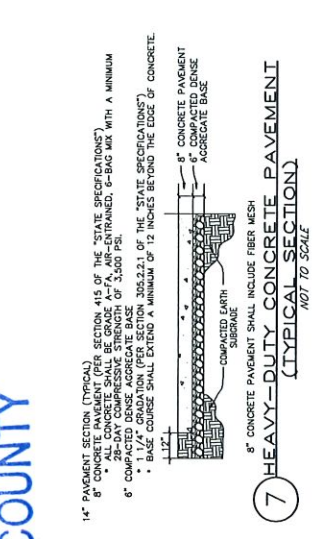
**3 TRACKING PAD DETAIL**  
 NOT TO SCALE



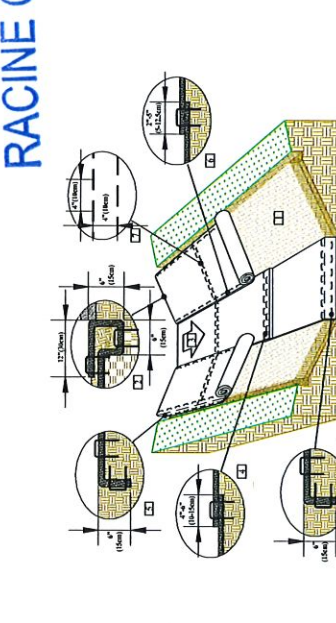
**4 SWALE INSTALLATION OF EROSION MAT DETAIL**  
 NOT TO SCALE



**5 SWALE INSTALLATION OF RIP RAP DETAIL**  
 NOT TO SCALE



**6 HEAVY-DUTY CONCRETE PAVEMENT**  
 (TYPICAL SECTION)  
 NOT TO SCALE



**7 LIGHT-DUTY CONCRETE PAVEMENT**  
 (TYPICAL SECTION)  
 NOT TO SCALE

**14\"/>**

**15\"/>**

**16\"/>**

**17\"/>**




NO.	REVISION	BY	DATE
1	ISSUE FOR APPROVAL	JLS	6/23/2020

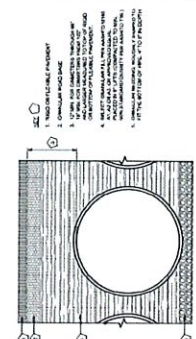
**7440 NORLAIRE DRIVE**  
 TYPICAL SECTIONS & CONSTRUCTION DETAILS  
 EAGLE DISPOSAL INC.  
 TOWN OF NORWAY, RACINE COUNTY, WISCONSIN

Nielsen Madsen + Barber  
 CIVIL ENGINEERS AND LAND SURVEYORS  
 1558 Horizon Blvd, Suite 200, Racine, WI 53406  
 Tel: (262)634-5588 Website: www.nmbisc.net





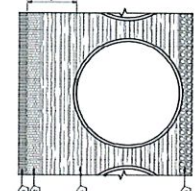
**TYPICAL SECTION VIEW**  
NOT TO SCALE



**REINFORCING TABLE**

BAR	SIZE	SPACING	LENGTH	START	END
1	#4	12"	10'	0"	10'
2	#4	12"	10'	0"	10'
3	#4	12"	10'	0"	10'
4	#4	12"	10'	0"	10'
5	#4	12"	10'	0"	10'
6	#4	12"	10'	0"	10'
7	#4	12"	10'	0"	10'
8	#4	12"	10'	0"	10'
9	#4	12"	10'	0"	10'
10	#4	12"	10'	0"	10'

**BACKFILL DETAIL**  
NOT TO SCALE

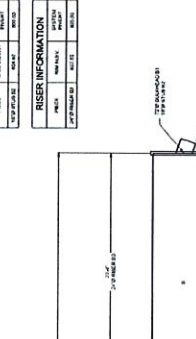


**CONSTRUCTION SPECIFICATIONS**

1. THE CONSTRUCTION SHALL BE IN ACCORDANCE WITH THE CONSTRUCTION SPECIFICATIONS FOR UNDERGROUND DETENTION SYSTEMS, EAGLE DISPOSAL INC., 2018 EDITION.
2. THE CONSTRUCTION SHALL BE IN ACCORDANCE WITH THE CONSTRUCTION SPECIFICATIONS FOR UNDERGROUND DETENTION SYSTEMS, EAGLE DISPOSAL INC., 2018 EDITION.
3. THE CONSTRUCTION SHALL BE IN ACCORDANCE WITH THE CONSTRUCTION SPECIFICATIONS FOR UNDERGROUND DETENTION SYSTEMS, EAGLE DISPOSAL INC., 2018 EDITION.
4. THE CONSTRUCTION SHALL BE IN ACCORDANCE WITH THE CONSTRUCTION SPECIFICATIONS FOR UNDERGROUND DETENTION SYSTEMS, EAGLE DISPOSAL INC., 2018 EDITION.
5. THE CONSTRUCTION SHALL BE IN ACCORDANCE WITH THE CONSTRUCTION SPECIFICATIONS FOR UNDERGROUND DETENTION SYSTEMS, EAGLE DISPOSAL INC., 2018 EDITION.
6. THE CONSTRUCTION SHALL BE IN ACCORDANCE WITH THE CONSTRUCTION SPECIFICATIONS FOR UNDERGROUND DETENTION SYSTEMS, EAGLE DISPOSAL INC., 2018 EDITION.
7. THE CONSTRUCTION SHALL BE IN ACCORDANCE WITH THE CONSTRUCTION SPECIFICATIONS FOR UNDERGROUND DETENTION SYSTEMS, EAGLE DISPOSAL INC., 2018 EDITION.
8. THE CONSTRUCTION SHALL BE IN ACCORDANCE WITH THE CONSTRUCTION SPECIFICATIONS FOR UNDERGROUND DETENTION SYSTEMS, EAGLE DISPOSAL INC., 2018 EDITION.
9. THE CONSTRUCTION SHALL BE IN ACCORDANCE WITH THE CONSTRUCTION SPECIFICATIONS FOR UNDERGROUND DETENTION SYSTEMS, EAGLE DISPOSAL INC., 2018 EDITION.
10. THE CONSTRUCTION SHALL BE IN ACCORDANCE WITH THE CONSTRUCTION SPECIFICATIONS FOR UNDERGROUND DETENTION SYSTEMS, EAGLE DISPOSAL INC., 2018 EDITION.

**CONTECH**  
 CONSTRUCTION SYSTEMS  
 1000 W. WISCONSIN AVE., SUITE 100  
 MILWAUKEE, WI 53233  
 TEL: 414.224.1100  
 FAX: 414.224.1101  
 WWW.CONTECHSYSTEMS.COM

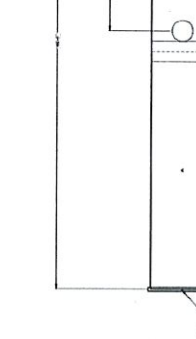
**ASSEMBLY**  
SCALE: 1/2" = 1'-0"



**CONSTRUCTION SPECIFICATIONS**

1. THE CONSTRUCTION SHALL BE IN ACCORDANCE WITH THE CONSTRUCTION SPECIFICATIONS FOR UNDERGROUND DETENTION SYSTEMS, EAGLE DISPOSAL INC., 2018 EDITION.
2. THE CONSTRUCTION SHALL BE IN ACCORDANCE WITH THE CONSTRUCTION SPECIFICATIONS FOR UNDERGROUND DETENTION SYSTEMS, EAGLE DISPOSAL INC., 2018 EDITION.
3. THE CONSTRUCTION SHALL BE IN ACCORDANCE WITH THE CONSTRUCTION SPECIFICATIONS FOR UNDERGROUND DETENTION SYSTEMS, EAGLE DISPOSAL INC., 2018 EDITION.
4. THE CONSTRUCTION SHALL BE IN ACCORDANCE WITH THE CONSTRUCTION SPECIFICATIONS FOR UNDERGROUND DETENTION SYSTEMS, EAGLE DISPOSAL INC., 2018 EDITION.
5. THE CONSTRUCTION SHALL BE IN ACCORDANCE WITH THE CONSTRUCTION SPECIFICATIONS FOR UNDERGROUND DETENTION SYSTEMS, EAGLE DISPOSAL INC., 2018 EDITION.
6. THE CONSTRUCTION SHALL BE IN ACCORDANCE WITH THE CONSTRUCTION SPECIFICATIONS FOR UNDERGROUND DETENTION SYSTEMS, EAGLE DISPOSAL INC., 2018 EDITION.
7. THE CONSTRUCTION SHALL BE IN ACCORDANCE WITH THE CONSTRUCTION SPECIFICATIONS FOR UNDERGROUND DETENTION SYSTEMS, EAGLE DISPOSAL INC., 2018 EDITION.
8. THE CONSTRUCTION SHALL BE IN ACCORDANCE WITH THE CONSTRUCTION SPECIFICATIONS FOR UNDERGROUND DETENTION SYSTEMS, EAGLE DISPOSAL INC., 2018 EDITION.
9. THE CONSTRUCTION SHALL BE IN ACCORDANCE WITH THE CONSTRUCTION SPECIFICATIONS FOR UNDERGROUND DETENTION SYSTEMS, EAGLE DISPOSAL INC., 2018 EDITION.
10. THE CONSTRUCTION SHALL BE IN ACCORDANCE WITH THE CONSTRUCTION SPECIFICATIONS FOR UNDERGROUND DETENTION SYSTEMS, EAGLE DISPOSAL INC., 2018 EDITION.

**CONSTRUCTION LOADING DIAGRAM**  
NOT TO SCALE

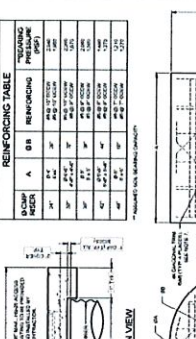


**REINFORCING TABLE**

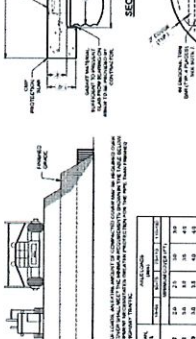
BAR	SIZE	SPACING	LENGTH	START	END
1	#4	12"	10'	0"	10'
2	#4	12"	10'	0"	10'
3	#4	12"	10'	0"	10'
4	#4	12"	10'	0"	10'
5	#4	12"	10'	0"	10'
6	#4	12"	10'	0"	10'
7	#4	12"	10'	0"	10'
8	#4	12"	10'	0"	10'
9	#4	12"	10'	0"	10'
10	#4	12"	10'	0"	10'

**CONTECH**  
 CONSTRUCTION SYSTEMS  
 1000 W. WISCONSIN AVE., SUITE 100  
 MILWAUKEE, WI 53233  
 TEL: 414.224.1100  
 FAX: 414.224.1101  
 WWW.CONTECHSYSTEMS.COM

**SECTIONAL VIEW**  
NOT TO SCALE



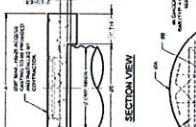
**CONSTRUCTION LOADING DIAGRAM**  
NOT TO SCALE



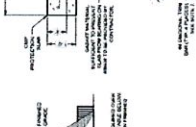
**REINFORCING TABLE**

BAR	SIZE	SPACING	LENGTH	START	END
1	#4	12"	10'	0"	10'
2	#4	12"	10'	0"	10'
3	#4	12"	10'	0"	10'
4	#4	12"	10'	0"	10'
5	#4	12"	10'	0"	10'
6	#4	12"	10'	0"	10'
7	#4	12"	10'	0"	10'
8	#4	12"	10'	0"	10'
9	#4	12"	10'	0"	10'
10	#4	12"	10'	0"	10'

**ROUND OPTION PLAN VIEW**  
NOT TO SCALE

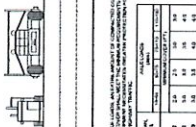


**SQUARE OPTION PLAN VIEW**  
NOT TO SCALE




**MATERIAL SPECIFICATION**  
NOT TO SCALE

**MANHOLE CAP DETAIL**  
NOT TO SCALE

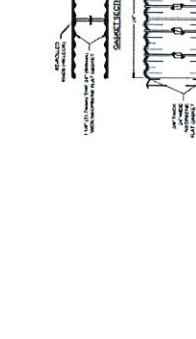


**CONTECH**  
 CONSTRUCTION SYSTEMS  
 1000 W. WISCONSIN AVE., SUITE 100  
 MILWAUKEE, WI 53233  
 TEL: 414.224.1100  
 FAX: 414.224.1101  
 WWW.CONTECHSYSTEMS.COM

**SECTIONAL VIEW**  
NOT TO SCALE




**CONSTRUCTION LOADING DIAGRAM**  
NOT TO SCALE



**REINFORCING TABLE**

BAR	SIZE	SPACING	LENGTH	START	END
1	#4	12"	10'	0"	10'
2	#4	12"	10'	0"	10'
3	#4	12"	10'	0"	10'
4	#4	12"	10'	0"	10'
5	#4	12"	10'	0"	10'
6	#4	12"	10'	0"	10'
7	#4	12"	10'	0"	10'
8	#4	12"	10'	0"	10'
9	#4	12"	10'	0"	10'
10	#4	12"	10'	0"	10'

**CONSTRUCTION LOADING DIAGRAM**  
NOT TO SCALE



**REINFORCING TABLE**

BAR	SIZE	SPACING	LENGTH	START	END
1	#4	12"	10'	0"	10'
2	#4	12"	10'	0"	10'
3	#4	12"	10'	0"	10'
4	#4	12"	10'	0"	10'
5	#4	12"	10'	0"	10'
6	#4	12"	10'	0"	10'
7	#4	12"	10'	0"	10'
8	#4	12"	10'	0"	10'
9	#4	12"	10'	0"	10'
10	#4	12"	10'	0"	10'

**CONTECH**  
 CONSTRUCTION SYSTEMS  
 1000 W. WISCONSIN AVE., SUITE 100  
 MILWAUKEE, WI 53233  
 TEL: 414.224.1100  
 FAX: 414.224.1101  
 WWW.CONTECHSYSTEMS.COM