

# Building a Racine County SRCOCY

Jonathan Delagrave, County Executive

Hope Otto, Human Services Director

Kristin Latus, Human Services Deputy Director

Antonio Chavez, Juvenile Detention Superintendent



# History of Juvenile Detention in Racine County

## Racine County Juvenile Detention Center

- Chapter 938.57 assigns Wisconsin counties the authority and responsibility to provide treatment and care of juveniles transferred to counties by the court.
- Racine County operates a Juvenile Detention Center housed in the Dennis Kornwolf Service Center where pre- and post-adjudicated youth are placed.
- Bed capacity of 121
- The physical environment is similar to an adult jail.

## Racine County ACE Program

- Racine County has conducted the Alternatives to Corrections Through Education (ACE) Program within the Juvenile Detention Center since 2002.
- It provides post-adjudicated youth with educational opportunities to recover high school credits, engage in family counseling, and participate in personal growth activities designed to improve decision-making and eliminate criminal thinking.
- The Racine County ACE Program has been recognized as a superior alternative to state corrections, demonstrating a lower recidivism rate, and higher credit attainment.

# Overview of ACT 185

## 2017 WI ACT 185

- Closes Lincoln Hills/Copper Lake by 2021
- Creates - 3 Types of Facilities
  - Mendota Juvenile Treatment Center – State Owned and Operated
  - Type I Facility - State Owned and Operated
  - Secure Residential Care Center for Children and Youth (SRCCCY) – County Owned and Operated – This Project
- Authorizes of \$120M in State bonding for design and construction for Type II facilities

# Why SRCCCY is Right for Racine County

75%

ACE youth do not receive felony charges within one year of completion



1<sup>st</sup>

In State of Wisconsin to develop 180/365 program



4.5

Average credits earned by ACE participants in 170 days

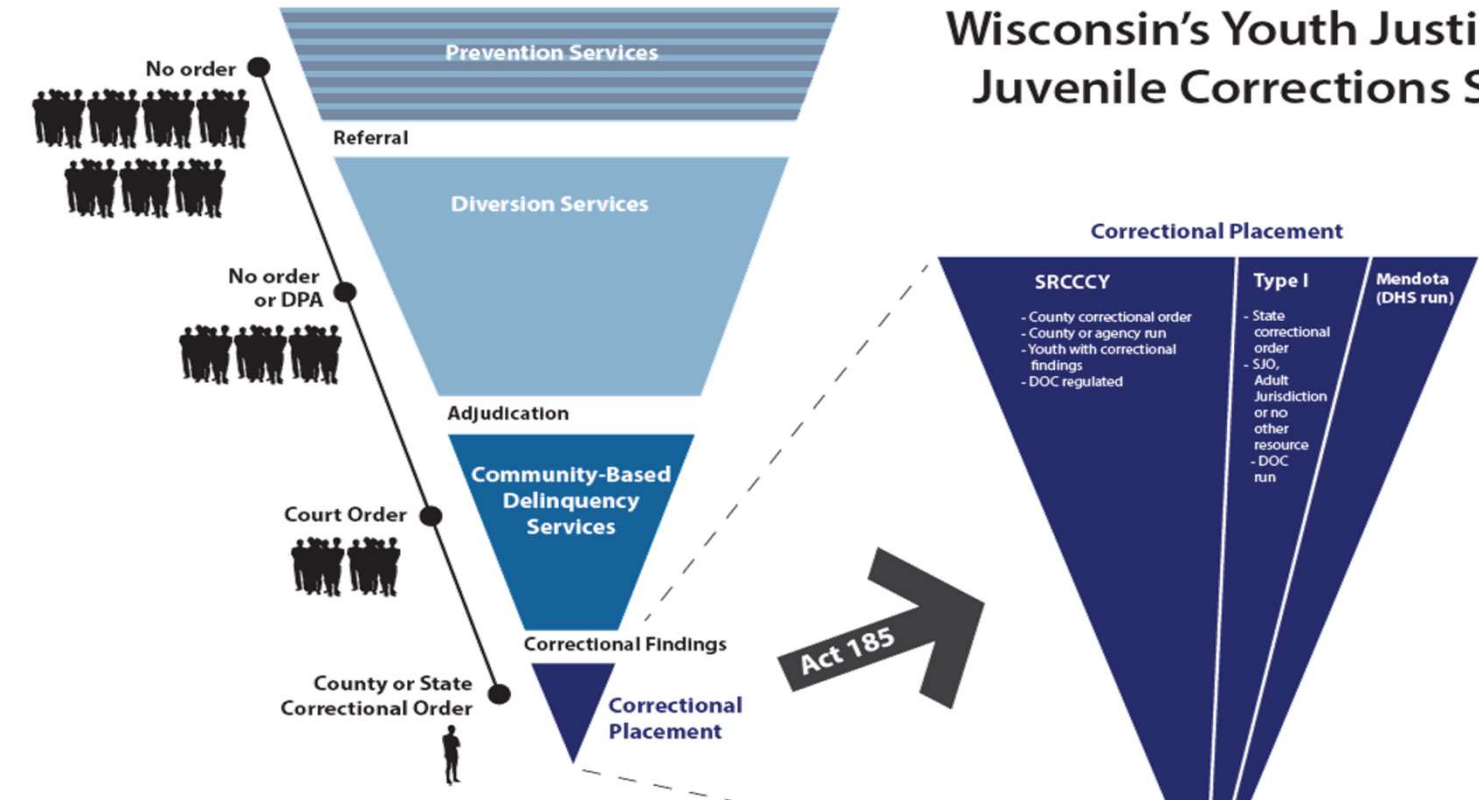
Evidence-Based, Trauma-Informed Programs

Interactive Journaling | MindUP | Aggression Replacement Therapy



# Preventing Institutionalization

## Wisconsin's Youth Justice and Juvenile Corrections System



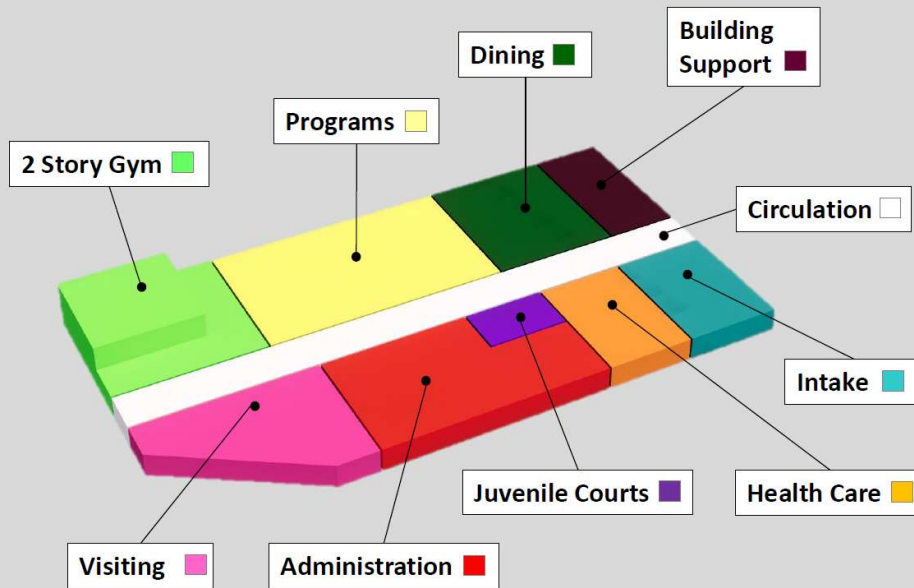
**KEY**

- Services provided by counties, schools, community-based organizations, etc.
- County provided community services (DCF oversight)
- Correctional placement (State or County)



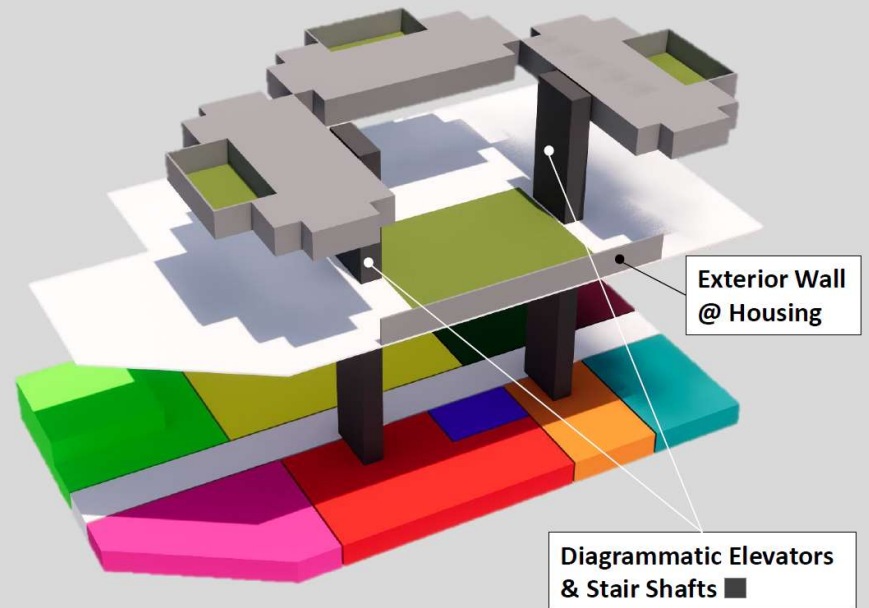


# Building Design



**Diagram - A**

SRCCCY Department Layout

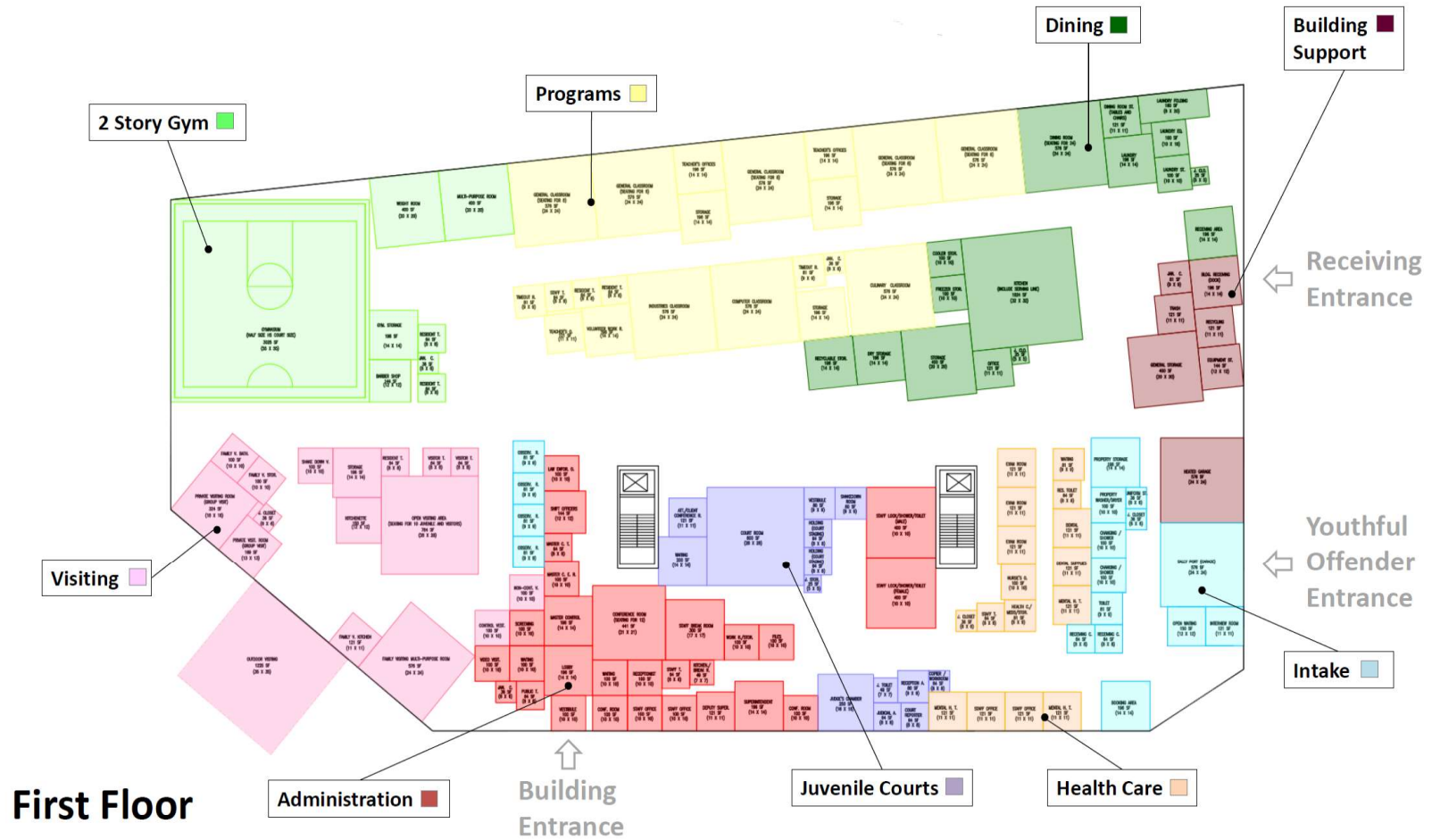


**Diagram - B**

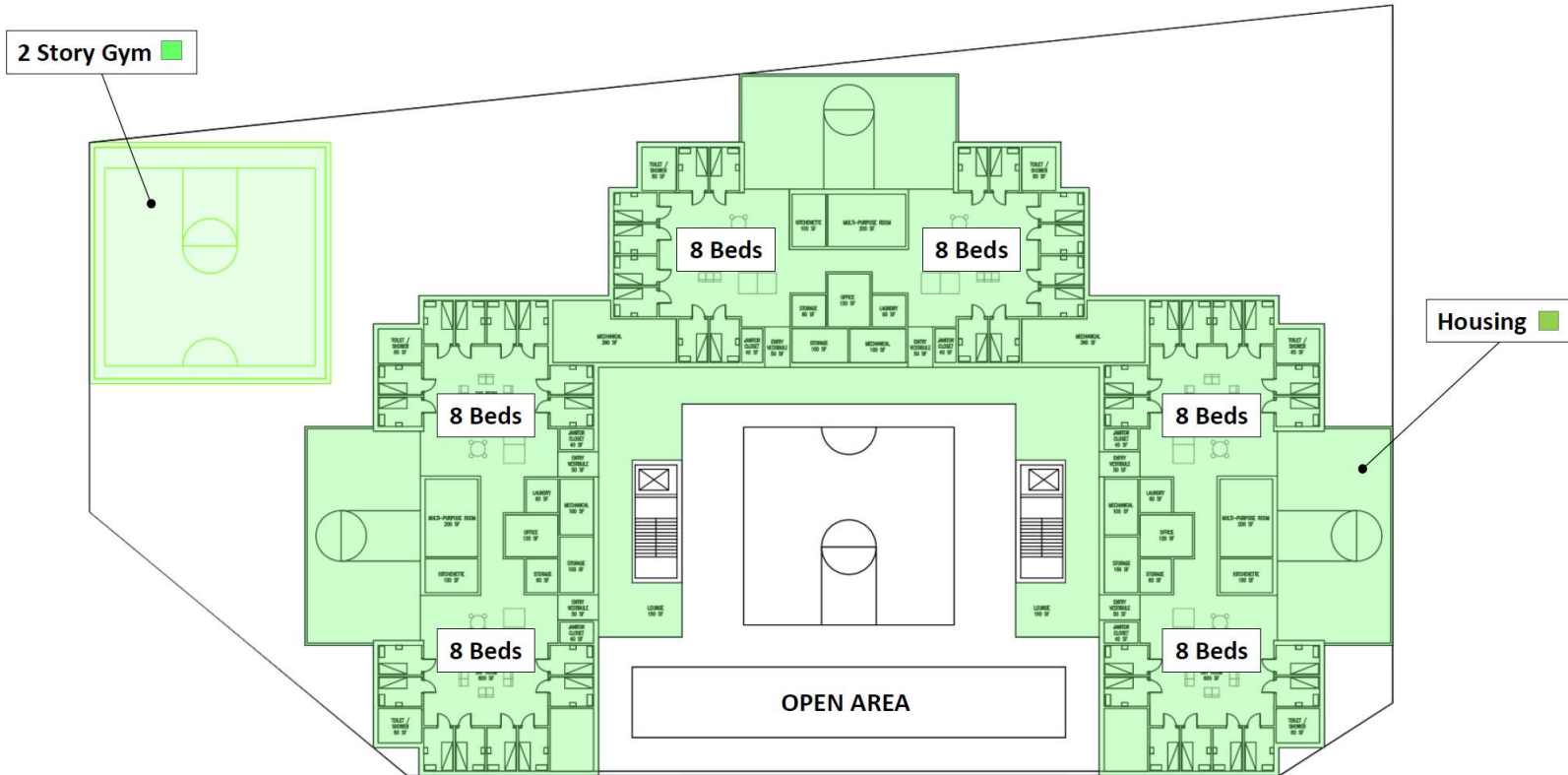
Exploded Isometric



# Detail View, First Floor



# Living Area



## Second Floor



# Proposed Budget

**1. Construction Budget.....\$34.8 million**

- a. 69,830 gross square feet
- b. 3 housing units = 48 beds
- c. Construction begins Spring 2021

**2. Project Budget.....\$41.2 million**

- a. Covers professional fees, moveable equipment, communications, permits/fees, other out of pocket expenses.

**3. State will pay 95% (100% for female)**

- a. State = \$40,000,000
- b. Racine County = \$4,000,000

