

# Racine County Sheriff's Office

*A Tradition Since 1836*

Racine County



Sheriff's Office

*"A Tradition Since 1836"*

# 2018 Annual Report

## Table of Contents

Message from the Sheriff .....	3
2018 Organizational Chart .....	4
Mission Statement .....	5
2018 Sheriff's Office Accomplishments .....	6
2018 Sheriff's Administration.....	7
Racine County Sheriff's Office Operations Division.....	9
I-94 Corridor C.O.P.S. ....	13
STEU C.O.P.S. ....	15
Criminal Investigations Bureau.....	16
Evidence Custodian.....	17
Metro Drug Unit .....	18
Water Safety Patrol .....	20
Recreational Patrol .....	21
K-9 Unit .....	22
Dive Rescue Team .....	23
Civil Process Unit .....	25
SWAT Team .....	26
Crisis Negotiation Team .....	27
Crisis Intervention Team .....	28
Honor Guard .....	29
Deputy Friendly .....	30
Support Services .....	31
Courts, Conveyances and Security .....	33
Planning and Training .....	34
Records Bureau .....	35
Racine County Sheriff's Office Jail Division .....	36
Jail Chaplaincy Program .....	38
Jail Revenues .....	39
Jail Population .....	40
Racine County Sheriff's Office CERT Team .....	42
Financial Summary .....	43
Promotions & Retirements .....	44
2018 Sheriff's Active Military Personnel, Awards and In Memoriam .....	45
Acknowledgments .....	46

## Sheriff Christopher Schmaling's Message

Greetings:

The Racine County Sheriff's Office is the chief law enforcement agency in Racine County. Our agency has full law enforcement authority throughout the county, including all the towns, villages, and cities, as well as the waters of Lake Michigan. We provide the following specialized functions:

- Metro Drug Unit
- Civil Process Unit
- Consumer Fraud Investigation
- Criminal Investigations Bureau
- Water Patrol
- SWAT Team
- Dive/Rescue Team
- Crisis Negotiators

The Sheriff's Office is also responsible for the operation of the Racine County Jail. The jail's rated capacity of 876 persons makes it one of the largest in the state.

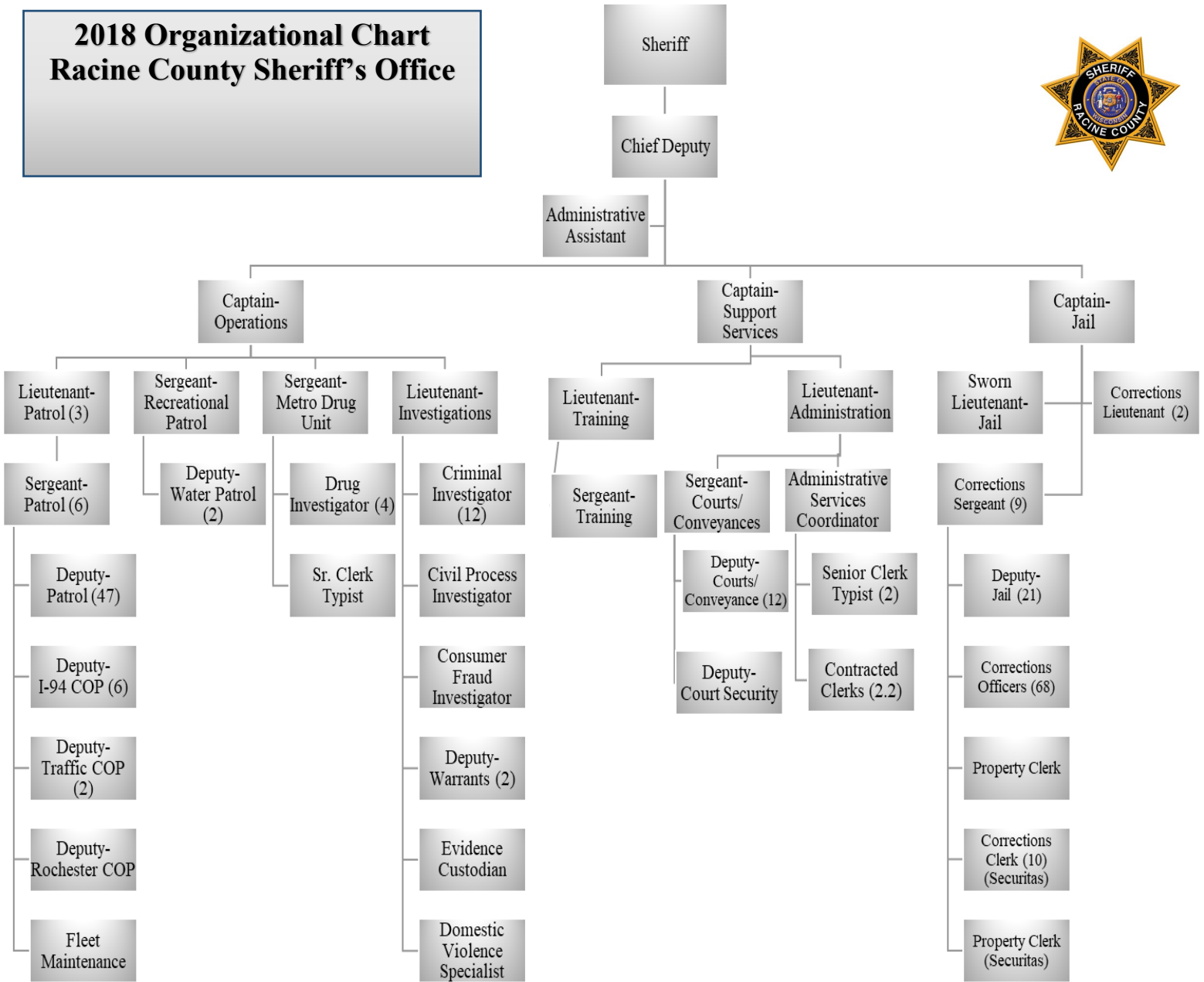
The professional staff of our agency remains dedicated to our mission of providing the core services that help maintain public safety, peace, and order in Racine County. We also remain committed to utilizing our resources in the most efficient and responsible manner possible. Our citizens expect these things, and deserve them. It is our great privilege to deliver these services to them.



Sincerely,  
Christopher Schmaling, Sheriff  
Racine County, Wisconsin

A handwritten signature in black ink that reads "Christopher Schmaling". The signature is written in a cursive, flowing style.

# 2018 Organizational Chart Racine County Sheriff's Office



**Racine County Sheriff's Office  
Mission Statement**

In Partnership with the Citizens, and with the cooperation of the communities within Racine County, the mission of the Racine County Sheriff's Office shall be the preservation of public safety, peace and order. This goal shall be met through proper utilization of the available resources in the most efficient manner possible while maintaining the highest levels of professionalism.



## RACINE COUNTY SHERIFF'S OFFICE 2018 ACCOMPLISHMENTS

**Violent Crime**  
100% Clearance rates for Murder, Forcible Rape, and Robbery in 2018

**Property Crime**  
There was a significantly higher clearance rate among all property crime cases in 2018 compared to 2017.

The Sheriff's Office accepted \$541,963 in grant funding in 2018 including the following programs:

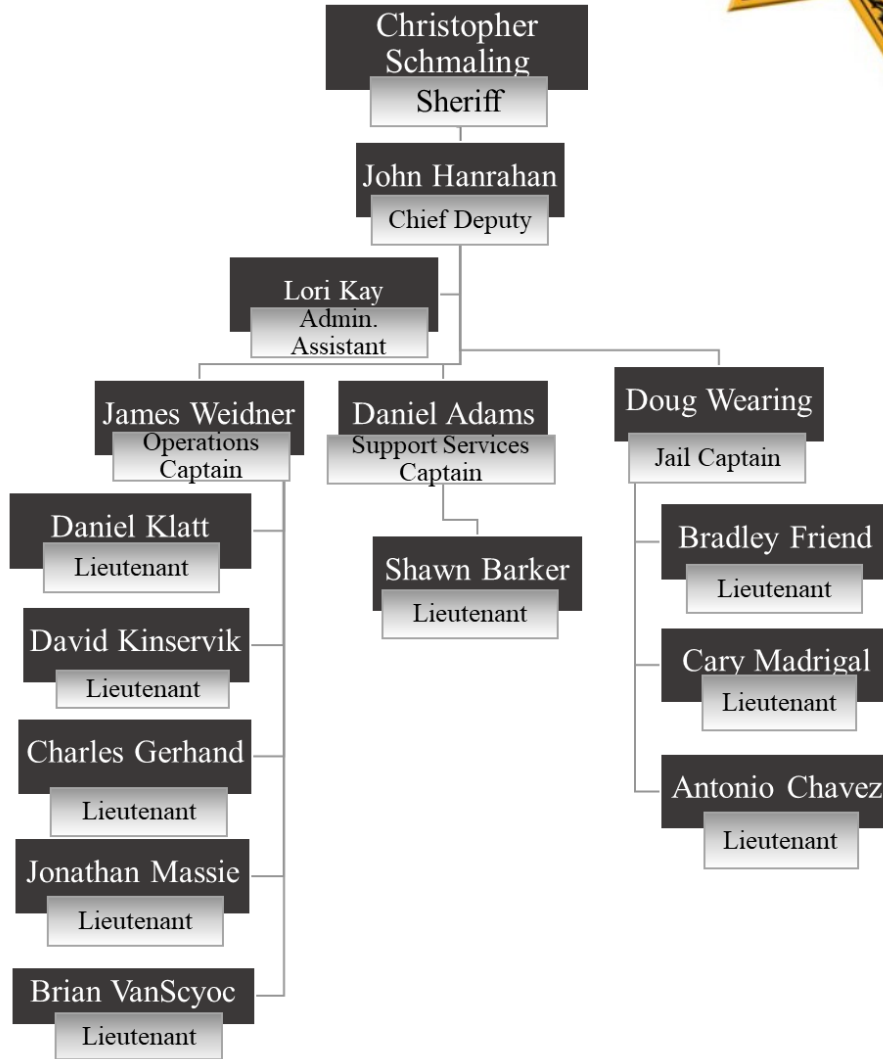
- I-94 Mitigation: \$81,816
- Seat Belt Enforcement: \$74,568\*
- SEADOG Grant: \$65,483
- Water Patrol Grant: \$42,358
- Alcohol Grant: \$42,010\*\*
- AHTF Grant: \$27,924

*\*Grant Shared with Burlington PD and Waterford PD*

*\*\*Grant Shared with Kenosha County Sheriff*

Uniform Crime Reporting Statistics					
	Offenses			Clearances	
	2017	2018	%	2017	2018
<b>Violent Crime</b>					
Murder	1	1	0%	100%	100%
Forcible Rape	1	2	+100%	100%	100%
Robbery	2	1	-50%	50%	100%
Aggravated Assault	12	20	+66%	91%	90%
<b>Total</b>	<b>16</b>	<b>24</b>			
<b>Property Crime</b>					
Burglary	52	43	-18%	9%	60%
Larceny Theft	193	166	-14%	24%	85%
Motor Vehicle Theft	24	17	-30%	25%	82%
Arson	1	2	+100%	0%	100%
<b>Total</b>	<b>270</b>				

# 2018 Sheriff's Administration



## 2018 Sheriff's Administration

The Sheriff's Administration is responsible for the management and direction of the entire Office, and ensures that the Office obtains its goals and objectives.

The Sheriff's Office is a large, dynamic organization with ever-growing responsibilities. The Office is composed of many specialized units.

The Office's Administrative Staff provides support services to all operating units within the Office. Support and administrative services include; creating policy and procedure, handling citizen's complaints, accounting, records, training, communications and clerical support.



Chief Deputy John Hanrahan

Operations Captain James Weidner



Support Services Captain Daniel Adams



Jail Captain Doug Wearing





## **Racine County Sheriff's Office Operations Division**

The Operations Division of the Sheriff's Office consists of Patrol, Investigations and Metro Drug, along with other specialized units. They provide public safety services throughout Racine County.

The uniformed patrol operations of the Racine County Sheriff's Office strives to improve the quality of life in Racine County by providing a high level of public service and keeping civilians safe through enforcement, prevention, education, and community policing efforts in partnership with communities, other governmental entities, and schools.

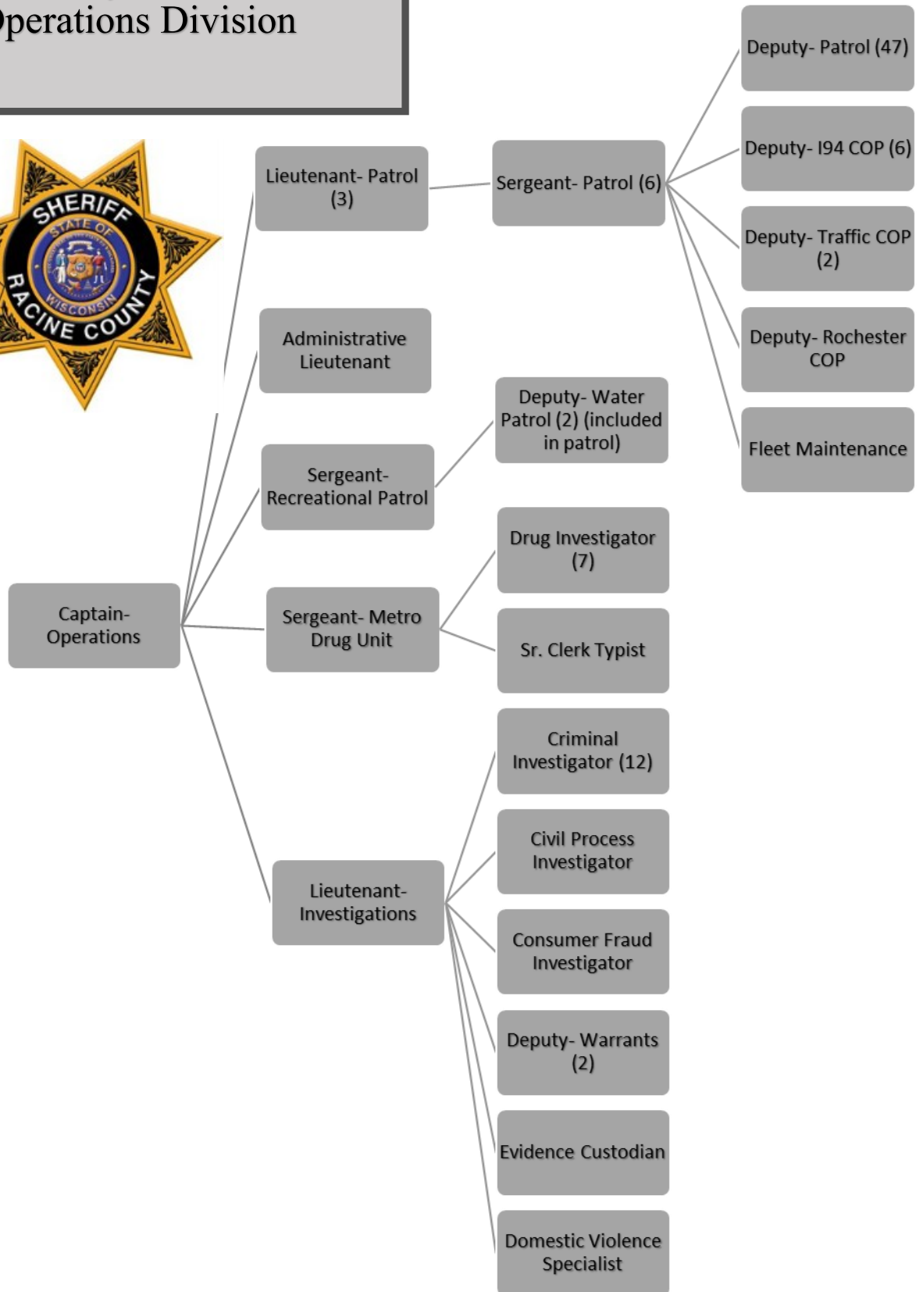
The primary mission of the Investigative Bureau is to investigate time-consuming, complex, or specialized crimes that are not practical for patrol deputies to investigate.

The main goal of the Racine County Metro Drug Unit is to target drug distribution and disseminating drug intelligence, coordinating drug enforcement with other local, state, and federal agencies, and has a role in educating the community about current drug threats.

The Operations Division is commanded by Captain James Weidner.



# Racine County Sheriff's Office Operations Division



Racine County Sheriff Patrol Operations Statistics							
	2012	2013	2014	2015	2016	2017	2018
Total Miles Driven:	1,184,677	888,274	969,601	1,505,943	920,610	1,200,538	1,262,623
Total Hours Worked:	88,067	80,541	76,268	83,183	73,351	104,555	129,028

Complaint Activity*							
	2012	2013	2014	2015	2016	2017	2018
Complaints Assigned:	15,256	14,917	15,167	15,944	13,850	17,120	15,379
Deputy Originated:	36,375	43,864	47,539	48,457	52,007	43,447	41,557
Complaint Follow Up	14,360	11,568	11,267	12,077	10,357	7,951	14,523
Complaints Assisted	6,029	5,093	4,408	5,328	4,909	5,720	2,468
<b>Total Calls</b>	<b>72,020</b>	<b>75,442</b>	<b>78,381</b>	<b>81,806</b>	<b>81,123</b>	<b>74,238</b>	<b>73,927</b>

\*2017 and 2018 calculated by a different method than previous years stats

Other Enforcement							
	2012	2013	2014	2015	2016	2017	2018
Warnings	7,786	9,074	6,332	7,549	7,084	9,812	10,875
Arrest Warrants	736	715	588	618	548	582	708



## 2018 Arrests Statistics

Patrol Arrest Activity							
	2012	2013	2014	2015	2016	2017	2018
Speeding Citations	8,183	9,709	10,178	11,953	12,407	10,226	9,088
Other Traffic Violations	12,250	12,252	7,087	8,521	17,987	19,178	17,212
OWI	335	331	371	450	466	411	386
Citations from Crashes	381	414	427	468	425	168	549
Parking	1,146	1,236	999	1,028	348	362	543
Felonies	155	183	170	171	114	372	169
Misdemeanor Arrests	1,042	945	504	604	487	741	327
Ordinance Arrests	677	659	590	683	791	1,803	918
<b>TOTAL PATROL ARRESTS</b>	<b>26,181</b>	<b>25,729</b>	<b>20,326</b>	<b>23,878</b>	<b>33,025</b>	<b>33,261</b>	<b>29,192</b>

## 2018 I-94 Corridor C.O.P.S.

The Racine County Sheriff's Office has created the I-94 Corridor Patrol. Officers aggressively patrol the Interstate as well as property locations within one mile of I-94 in efforts to make the roadways and businesses in Racine County a safer place to operate motor vehicles and conduct commercial operations. The program is in its fourteenth year of operation, and has made a significant impact on safety in Racine County.

2018 I-94 Corridor C.O.P.S. Activity	
Base Fine	\$463,473.50
Citation Fine	\$1,258,734.40
Miscellaneous Other Arrests / Citations	
OWI Arrests	18
Criminal Traffic Citations	86
Traffic Citations	4604
Ordinance Violations	98
Weapons Violations	2
Felony Arrests	38
Misdemeanor Arrests	90
Property Damage Accidents	85
Personal Injury Accidents	35

Service of Warrants	59
Persons to Jail on Warrants	19
Drug Arrests	87

Drugs seized 2018 (I-94 Corridor)	
THC	461.7 grams
Cocaine	1.9 grams
Heroin	1.2 grams
Schedule II, IV, V Drugs	4
Schedule III Drugs	0
Pills (non-schedule)	116 tabs

2018 Interstate 94 Calls Summary	
Traffic Stops	5240
Traffic Accidents	488
Driving Under the Influence	55
Weapons Violations	3
Aid Motorist	942

2002-2018 Drugs seized (I-94 Corridor)	
THC	48,243.09 grams or 106.36 pounds
Cocaine	29,621.7 grams or 65.30 pounds
Heroin	391.7 grams or .864 pounds
Other drugs	1,429 tabs/pills of various controlled pills/ schedule II, schedule IV, V



## STEU C.O.P.S.

In 2010, two new C.O.P. positions were created to function as a specialized traffic enforcement unit with a concentration on state and county highway traffic enforcement.

<b>2018 STEU Statistics</b>	
Base Fine	<b>\$666,240.20</b>
Citation Fine	<b>\$2,017,484.80</b>
Warrant Bond	<b>\$170,790.85</b>
Total Traffic Citations	<b>7,354</b>
Weapons Violations	<b>9</b>
Felony Arrests	<b>69</b>
Misdemeanor Arrests	<b>140</b>
Property Damage Accidents	<b>50</b>
Personal Injury Accidents	<b>19</b>
Total THC Weight	<b>892</b>
Total Cocaine Weight	<b>23</b>
Total Heroin Weight	<b>3.1</b>
Total Cash Seized	<b>\$4,619.00</b>



## **Racine County Sheriff's Office Criminal Investigations Bureau**

The Racine County Sheriff's Office Investigative Bureau is comprised of 1 Lieutenant and 15 Investigators. One Investigator is assigned to Civil Process and one is assigned to Consumer Fraud Investigations.

The Investigative Bureau has a number of specialized units staffed by highly trained and skilled Investigators. Crimes investigated by the Criminal Investigations Bureau include:

**Sexual Assault**

**Child Abuse**

**Burglary & Theft**

**Arson Investigations**

**White Collar & Financial Crimes**

**Internet Crimes**

**Traffic Investigations**

**Consumer Fraud**

**Death Investigation**

**Street Gangs**





## Racine County Sheriff's Office Evidence Custodian

The Racine County Sheriff's Office Evidence Custodian is a position held by a Sworn Deputy responsible for the proper collection, identification, and preservation of evidence collected by Deputies and Investigators.

In 2018,  
6,077 items of  
evidence were  
inventoried

The Evidence Custodian maintains the 'chain of custody' of evidence that may be sent to the Crime Lab for analysis.

Collection and processing of evidence is a constantly changing field that demands the Office be current in the latest technological procedures. Our Evidence Custodian and Investigators are highly involved in learning new processes and proper techniques for evidence collection.

In 2018, 159 items were held by the evidence department for safe keeping, 110 vehicles were processed, and 6,077 items were collected by law enforcement officers and inventoried as evidence.

In addition to evidence of criminal activities, 237 blood samples of potential OWI situations were processed through the industrious Evidence Section and the Wisconsin State Hygiene Lab/Crime Lab.



## Racine County Sheriff's Office Metro Drug Unit

Seven Investigators, including one from the Caledonia Police Department, one supervising Sergeant, and a part time Secretary currently staff the Racine County Metro Drug Unit.

The Unit was created to provide a coordinated and comprehensive effort to investigate and arrest those who engage in the trafficking of illegal drugs within Racine County. The Unit works closely with the FBI, IRS, DEA HIDTA and the Federal Prosecutors Office, as well as other State and local law enforcement agencies such as SEADOG, a 5-county information and intelligence sharing co-operative.

The Metro Drug Unit executed 79 search warrants during 2018.

During 2018, there were 1,077 arrests made for various drug charges in Racine County. There were 664 Felony charges, 178 Misdemeanors, and 167 classified Ordinance violations. The most notable increase in confiscated substances was of Marijuana– THC and Cocaine, the combined street value of which is over \$1,100,000.

2018 Metro Drug Activity - Seizures		
Substance	Quantity	Street Value in US Dollars
<b><u>Adderall</u></b>	179 tablets	\$895.00
<b><u>Alprazolam</u></b>	412 tablets	\$2,060.00
Amphetamine	130 tablets	\$650.00
Cocaine	3,921.9 grams	\$392,190.00
Crack Cocaine	636.3 grams	\$44,541.00
Heroin	208.5 grams	\$41,700.00
<b><u>Hydrocodone</u></b>	1,282 tablets	\$6,410.00
Marijuana – THC	74,804.9 grams	\$748,049.00
Marijuana Plants	92	\$92,000.00
Synthetic THC	102.3 grams	\$1,534.50
<b><u>Oxycodone</u></b>	368 tablets	\$11,040.00
<b><u>Misc Tablets</u></b>	1,726 tablets	\$8,630.00



## Metro Drug Unit Statistics

Metro Drug Unit							
Felony Charges	2012	2013	2014	2015	2016	2017	2018
	457	545	614	663	670	840	664

Metro Drug Unit							
Search Warrants	2012	2013	2014	2015	2016	2017	2018
	88	83	86	84	95	80	79



## Racine County Sheriff's Office Water Safety Patrol

The Racine County Sheriff's Office continues to operate the Water Safety Patrol on Lake Michigan and on inland lakes and rivers throughout Racine County. The Water Safety Patrol operates from April 1<sup>st</sup> until about the second week of November. During the summer months, Water Safety Patrol Deputies are assisted by approximately 5 college student summer employees.



The Water Safety Patrol continues to be partially funded by the Department of Natural Resources. Annually, up to 17% of the costs of operating the Water Safety Patrol are reimbursed to Racine County.

The Racine County Sheriff's Water Safety Patrol responds to assist boaters for a variety of incidents, including accidents, engine failures, and rescue as well as enforcement activities.

<b>Water Safety Patrol Calls for Service 2018</b>	
Boat Accidents	2
Search & Rescue	5
Hazard to Navigation	59
Boating Citations Issued	36
Boating Warnings Issued	75
Vessels Assisted	34
Assist Other Agencies	6
Special Events	7
<b>TOTAL CALLS FOR SERVICE</b>	<b>212</b>



## Racine County Sheriff's Office Recreational Patrol

The Racine County Sheriff's Office Recreational Patrol is responsible for overseeing snowmobile safety and ATV safety, along with investigating accidents and complaints related to these recreational activities.

The Racine County Sheriff's Office Snowmobile Patrol is supported by the Racine County Snowmobile Alliance and the Department of Natural Resources. Our office submits a year-end report to the Department of Natural Resources after each snowmobile season, and we are reimbursed for a portion of the cost to operate the snowmobile patrol.

Our Motorcycle Patrol unit is made up of sworn officers who must successfully complete an intensive training class before operating the motorcycle in an enforcement capacity. The Sheriff's Office currently has two Harley Davidson police motorcycles. The motorcycle unit performs traffic enforcement throughout the county and has assisted with escorting dignitaries and parades.



## Racine County Sheriff's Office K9 Unit

In 1999, the Racine County Sheriff's Office began its first Canine Unit. With the generous support of many businesses and citizens, the program was launched.

The Canine Unit is currently comprised of 4 K9's and their handlers, thanks to the overwhelming support of the community and several local businesses. In 2012, K9 Friday was placed into service. Friday is a Belgian Malinois/German Shepherd mix. Friday is also a dual purpose K9, trained in narcotics detection, tracking, building and area searches, and articles and evidence searches. Friday is partnered with Deputy Edward Drewitz.

In 2013, additional donations were received, and the Sheriff's Office was able to add two K9's to the K9 unit. K9 Nitro and K9 Murphy were placed into service in November 2013. Both are Belgian Malinois's, and both are dual purpose K9's, trained in narcotics detection, tracking, building and area searches, and articles and evidence searches. Nitro is partnered with Deputy Troy Ruffalo and Murphy is partnered with Deputy David Fisher.

In 2014, K9 Nox, a German Shepherd trained in narcotics detection, tracking, building and area searches, and articles and evidence searches, was placed into service. Nox is partnered with Deputy Kurt Clemens.

Canine Unit Calls for Service 2018	
Trainings	341
Demonstrations	26
Patrol Call Response	1818
<b>TOTAL CALLS FOR SERVICE</b>	<b>2185</b>



## Racine County Sheriff's Office Dive Rescue Team

The Racine County Sheriff's Office Dive Rescue Team is a member of the Racine County Dive Team (RCDT) which operates under the Mutual Aid Box Alarm System Agreement ("MABAS") Division 102 under the authority and oversight of the Sheriff. RCDT members are comprised of public safety agencies within Racine County including Sheriff's Deputies and Corrections Officers, Fire, Rescue and EMS personnel. RCDT members include rescue/recovery divers, surface rescuers and shore/boat support personnel. At the present time, the RCDT has approximately 60 members.



The primary function of the RCDT is to make every reasonable attempt to save any person that may be drowning or has disappeared under the surface of any body of water within Racine County.

Additionally, the RCDT will make every reasonable effort to recover the body of any person that has been declared a drowning victim in any body of water within Racine County. The team also responds for evidence recovery operations and provides safety for water related events throughout Racine County.

Because the RCDT is comprised of multiple agencies with numerous specialized assets and personnel, it is considered a regional response team and has assisted other agencies of Southeastern Wisconsin and Illinois with their waterborne operations.

RCDT member agencies schedule intensive practical trainings each month and open their respective trainings to other member agencies. All active divers must have a minimum of an advanced certification through a professionally accredited SCUBA certification agency.

The RCDT has also obtained specialized equipment to make underwater searches safer and faster. This includes an underwater towable video system, diver to diver underwater communications, surface supplied air system, and a diver to surface video system. Rescue boats are staged east and west of I-94 for rapid deployment to any body of water in Racine County.

Many RCDT members have taken continuing education courses and are certified in such specialties as: Advanced Open Water, Rescue Diver 1 & 2, Medical Dive Specialist, Ice Diver, Wreck Diver, Night Diver, Computer Diver, Deep Diver, Cave Diver, Equipment Repair Specialist, Swift Water Rescue, Underwater Investigator, Underwater Death Investigator, Nitrox Diver, Staged Decompression Diver, Advanced Tri-Mix Diver, Advanced Gas Blender, Dive Master, and Dive Instructor.

**The Racine County  
Sheriff's Office Dive  
Rescue Team  
completed 1,080 Hours  
of Proficiency Training  
in 2017**

## Racine County Sheriff's Office Dive Rescue Team

<b>Dive Team – 2018 Calls for Service</b>	
Evidence Recovery	2
Assisting Other Jurisdictions	0
Water Safety Events	1
Public Relations Events	1
Additional Training Events	1
Obstruction Removal	0
Total Calls	5





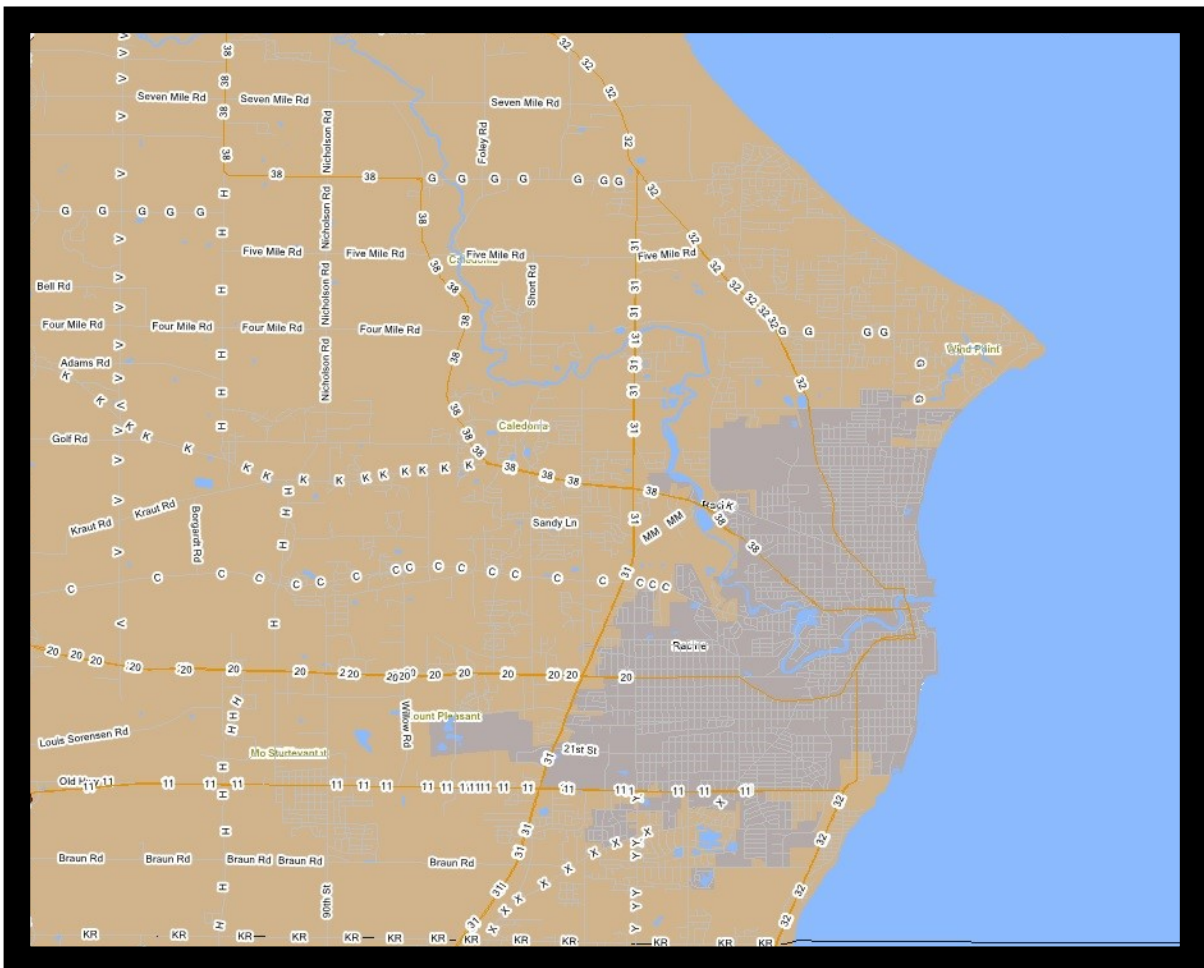
## Racine County Sheriff's Office Civil Process Unit

The Racine County Sheriff's Office Civil Process Division services citizens and businesses in Racine County with legal papers pursuant to Wisconsin Statute 59.27(4), which states "The Sheriff, personally or by the undersheriff or deputies, serve or execute all processes, writs, precepts and orders issued or made by lawful authority and delivered to the Sheriff." This office is responsible for serving legal papers on individuals such as Subpoenas, Summons and Complaints, Orders and various other papers.

Papers for service will be accepted at the Downtown Sheriff's Office Monday through Friday, 8 a.m. through 4:30 p.m. (excluding holidays), can be faxed in for service, or they may be mailed to the Sheriff's Office at the Law Enforcement Center.

Only papers for service within Racine County will be accepted. We require two copies of the papers being served. Service Fees are dependent on the municipality and address of service.

Agency Service Numbers		
Year	2017	2018
# of Process Services Requested	1,997	2,047
Evictions for Service	783	545



## Racine County Sheriff's Office SWAT Team

The Racine County Sheriff's Office SWAT Team is comprised of deputies, investigators and supervisors from all areas of the Sheriff's Office.

Team members train regularly to assist Racine County Law Enforcement agencies with serving high risk warrants, fugitive apprehensions, resolving barricaded suspects and hostage situations, and addressing other high risk law enforcement operations as needed.



Regular hands on and classroom training combined keeps team members skills at the level needed to operate in these high risk environments.



## **Racine County Sheriff's Office Crisis Negotiation Team (CNT)**

The Racine County Sheriff's Office Crisis Negotiation Team (CNT), consists of 11 sworn members of various ranks throughout the Sheriff's Office. The primary goal of the CNT is to create a peaceful resolution to often extremely volatile situations. This is accomplished with empathy, active listening, and verbal de-escalation techniques. Typical calls may involve a person barricaded in a building, someone threatening harm to themselves or others, or a wide variety of other crisis events that threaten the safety of the community.

Upon joining the team all members attend an initial block of advanced training. From there they receive ongoing monthly training. All members also attend additional courses and seminars to enhance their skills. The CNT has received training from many sources, including, the FBI, National Tactical Officers Association (NTOA), and Wisconsin Crisis Negotiators Association.



## **Racine County Crisis Intervention Team**

Racine County started the current C.I.T. program in the April 2009 through the assistance of then County Executive McReynolds and the local branch of NAMI (National Alliance of Mental Illness) who saw a need to train local members of the Law Enforcement Community who were responding to calls for service involving those suffering from a mental disorder or in crisis.

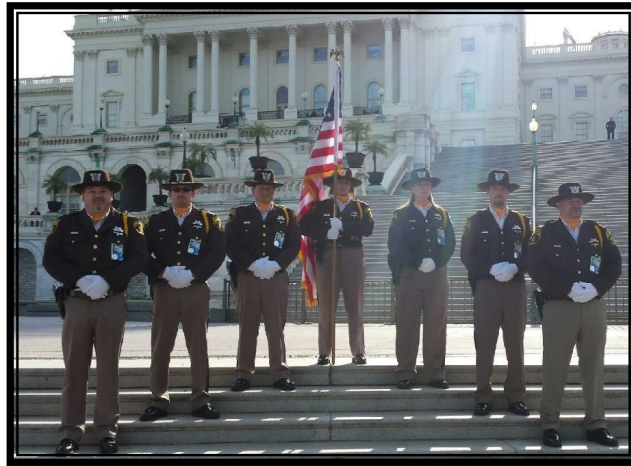
Since the program's inception in Racine County, we have had 14 classes graduate, consisting of officers from every Law Enforcement Agency throughout Racine County; approximately 292 Officers have completed the 40 hour course, and 76 Officers have completed the CIT Advanced course.

Officers attending this course of study learn from local experts in the field of mental health and from consumers themselves on ways of better handling their crisis at the time of the call. In short, the CIT works to find better, safer ways to handle these calls.

The Racine County C.I.T. program, partnered with C.I.P. (Crisis Intervention Partner), conducts two 16-hour classes a year geared towards dispatchers, nurses, fire personnel, corrections, HSD and others dealing with people suffering from a mental disorder or in crisis, with approximately 564 trained as of November 2016.

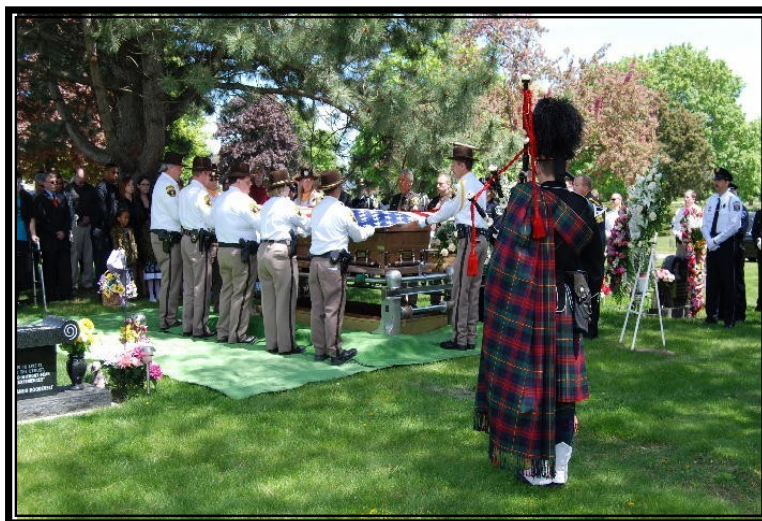
## Racine County Sheriff's Office Honor Guard

The Racine County Sheriff's Office Honor Guard consists of 12 sworn members of the Racine County Sheriff's Office. The Honor Guard is called out for funerals for past and present members of the Racine County Sheriff's Office. The Honor Guard serves at these funerals as a show of respect and honor for the deceased Deputy's service as a Law Enforcement Officer to the county and the Racine County Sheriff's Office.



Using special Honor Guard uniforms and equipment, the Honor Guard performs a casket watch during the visitation, performs pall-bearer duties, sets up the squad procession to the burial site, folds and presents the flag to the family, and arranges the rifle salute, bugler, and bagpiper.

The Honor Guard also attends line-of-duty funerals for deceased officers from other law enforcement agencies throughout the State of Wisconsin and adjoining states as a show of respect for the fallen officer, their families and their law enforcement agency.



## Racine County Sheriff's Office Deputy Friendly Program

The Deputy Friendly program has been very successful for many years, providing the Sheriff's Office a strong connection to the communities in Racine County. Deputy Crystal Venegas reaches out to thousands of children, families, and citizens throughout Racine County by way of school visits and attending local events and family functions.



Deputy Friendly's objectives are:

- To provide students with the opportunity to develop an intelligent understanding of his or her rights, responsibilities and obligations as a junior citizen
- To establish a link between students of our communities and uniformed Law Enforcement Officers
- To develop a respectful image of the Sheriff's Office in the minds of students
- To provide a role model that is looked up to with respect and positivity

During 2018, Deputy Friendly was involved in the following:

- Visiting preschools and day care centers
- Managing the annual Deputy Friendly Awards Contest
- Bicycle Rodeos
- Safety Town USA Instructor
- Child Passenger Safety Technician
- Tobacco Abatement Program
- Alcohol Awareness Program
- Visit elementary schools in Racine County, educating kindergarten through second grade students on a variety of topics: the job of a police officer, gun safety, stranger awareness, bicycle safety, pedestrian safety and passenger safety
- Representing the Racine County Sheriff's Office at local events such as the Racine County Fair and local public fundraisers

## **Racine County Sheriff's Office Support Services Division**

The Support Services Division is led by Captain Daniel Adams. This division is comprised of the Courthouse and Law Enforcement Center security management, the Racine County Sheriff's Office Records Bureau, and the Planning and Training Office.

The main objective of the Courthouse and Law Enforcement security management is to provide a safe and secure environment for all men and women who frequent our court facilities.

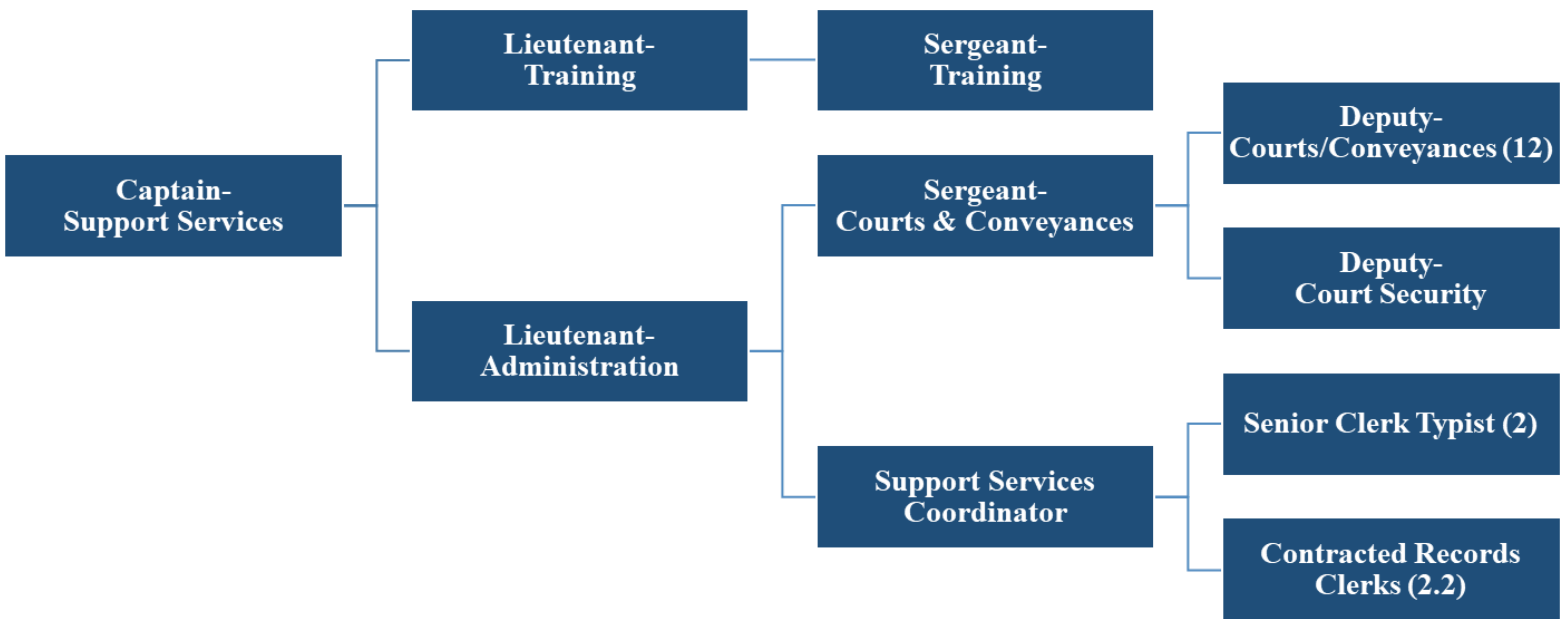
Records Bureau staff is responsible for the maintenance and storage of all paper and electronic records associated with incidents, investigations, arrests, traffic accidents and inmate records. Records Bureau staff also prepares and processes incoming court documents for Civil Process, Evictions and Sheriff's Foreclosure Sales.

The Planning and Training Office organizes and schedules all trainings for correctional officers, sworn law enforcement officers and civilian staff of the Sheriff's Office in accordance with the Law Enforcement Standards Bureau and the Criminal Information Bureau agencies, offices overseen by the Wisconsin Department of Justice. It is the responsibility of the Training Sergeant to make sure all mandated training requirements are met and recorded through the State of Wisconsin.

The Support Services Division oversees the department's Records Management system as well as the other electronic data systems. The Racine County Sheriff's Office Support Services Division is one of its "behind the scenes" commands that provide a variety of services to all members of our agency, the public and other law enforcement and criminal justice agencies.



# Racine County Sheriff's Office Support Services Division





## Racine County Sheriff's Office Courts, Conveyances, and Security

The Sheriff's Office is responsible for providing a safe and secure environment for those visiting our courts facilities. The Courthouse and Law Enforcement Center are staffed with Reserve Deputies at security check points when you enter these buildings. Individual courtrooms are also staffed with Deputies for security.



**COURTHOUSE HOURS:** 7:30am - 5:00pm Monday - Friday

Racine County Courthouse, 730 Wisconsin Avenue, Racine, WI 53403

The public entrance to the Racine County Courthouse is located on Wisconsin Avenue. All those entering the courthouse must go through the security check point are subject to search. Please see the list below of prohibited items allowed.

**LAW ENFORCEMENT CENTER:** 7:30am - 5:00pm Monday - Friday

Racine County Law Enforcement Center (LEC), 717 Wisconsin Avenue, Racine, WI 53403

The public entrance to the Law Enforcement Center (LEC) is located off of Wisconsin Avenue across the street from the courthouse. All entering the LEC must go through a security check point and are subject to search. Please see the list below of prohibited items allowed.

## Racine County Sheriff's Office Planning and Training

In addition to scheduling trainings for all Sheriff's Office employees in accordance with the Law Enforcement Standards Bureau, the Planning and Training Office oversees operations at the Robert L. Rohner Training Center.

This facility is a joint venture between the FBI, the Racine County Sheriff's Office, and WE Energies. Discussions began during 2003/2004 culminating in a financial commitment by the FBI and WE Energies donating land under the terms of a zero-cost lease agreement. The FBI contributed approximately \$1.5 million for the construction of a building, grounds improvements and a range house to serve the training needs of the FBI, the Racine County Sheriff's Office, and other local police agencies. WE Energies contributed approximately 25 acres of land along with enough clean fill to erect the existing berms on the north end of the range property. The training center is also available to other Racine County Law Enforcement agencies & Gateway Technical College.

The main building on the training center grounds features traditional classroom space on the main level along with bathrooms, showers, and a locker room. The classroom is equipped with audiovisual technology to accommodate various media formats for training and presentations. The lower level contains additional classroom space with a well-cushioned floor and open space for use in dynamic training. The building is climate-controlled year round.

The training center contains both a pistol range and a rifle range to accommodate the different types of weapons systems typically in use by law enforcement. The pistol range is equipped with a range tower that provides a vantage point for observation and it also serves as a control center for the fully automated target system. The architectural design of the training center along with the incorporated technologies ensure that Racine County Law Enforcement training needs are met well into the future.



## **Racine County Sheriff's Office Records Bureau**

The Racine County Sheriff's Office Records Bureau is responsible for the maintenance, computerization, and storage (both physical and digital) of all records generated by patrol, investigative and jail personnel in the course of their duties. These records include, but are not limited to; incident reports, accident reports, investigative reports, correspondence related to an incident, citations, and internal documents.

The Records Bureau maintains inactive jail files, fingerprint cards, mug shots, and supportive documents as part of its custodial duties. Most records are stored for seven years prior to the destruction process set forth by Racine County. Some records, due to their nature, are kept past the seven-year period with no possibility of destruction.

Records Bureau personnel are responsible for assisting citizens at our front counter, filing, data entry of pertinent information, and storage of Sheriff's Office records. Arrest paperwork is collected, processed, and disseminated to the Racine County Courts and District Attorney's Office as appropriate.

Records Bureau personnel respond to a wide range of requests from the general public, news media, and other law enforcement agencies, including records checks, open records requests, and general information or facility directions, while reporting to State and Federal agencies regarding crimes, arrests, and accident information.

All initial-contact clerical functions of the Civil Process Office are conducted by Records Bureau personnel. Fingerprinting of out-of-custody defendants, sex offender registrants, arrested juveniles, applicants for foster care or employment, and citizens requiring special licenses or certifications are also performed by Records Bureau staff.

Office hours are from 8:00 AM to 4:30 PM, Monday thru Friday, excluding legal holidays.

Fingerprinting Hours are 9:00AM to 11:00AM and 1:00PM to 3:00PM on Tuesdays, Wednesdays, and Thursdays, excluding legal holidays.

DNA Hours are 9:00AM to 11:30AM Monday thru Friday, excluding legal holidays.

The Records Bureau staff includes one supervisor, three full-time clerks and two part-time clerks. The supervisor is the Support Services Coordinator, who, under the supervision of the Administrations Lieutenant, is responsible for software application administration, records management, media-based open records requests, and citizen assistance. This includes troubleshooting software issues, training, drafting and implementation of procedures, quality control for data entry functions, and overseeing long-term projects. The Coordinator interacts with other networked agencies for software procedures and implementation, as well as staying up-to-date on Open Records Law.

## **Racine County Sheriff's Office Jail Division**

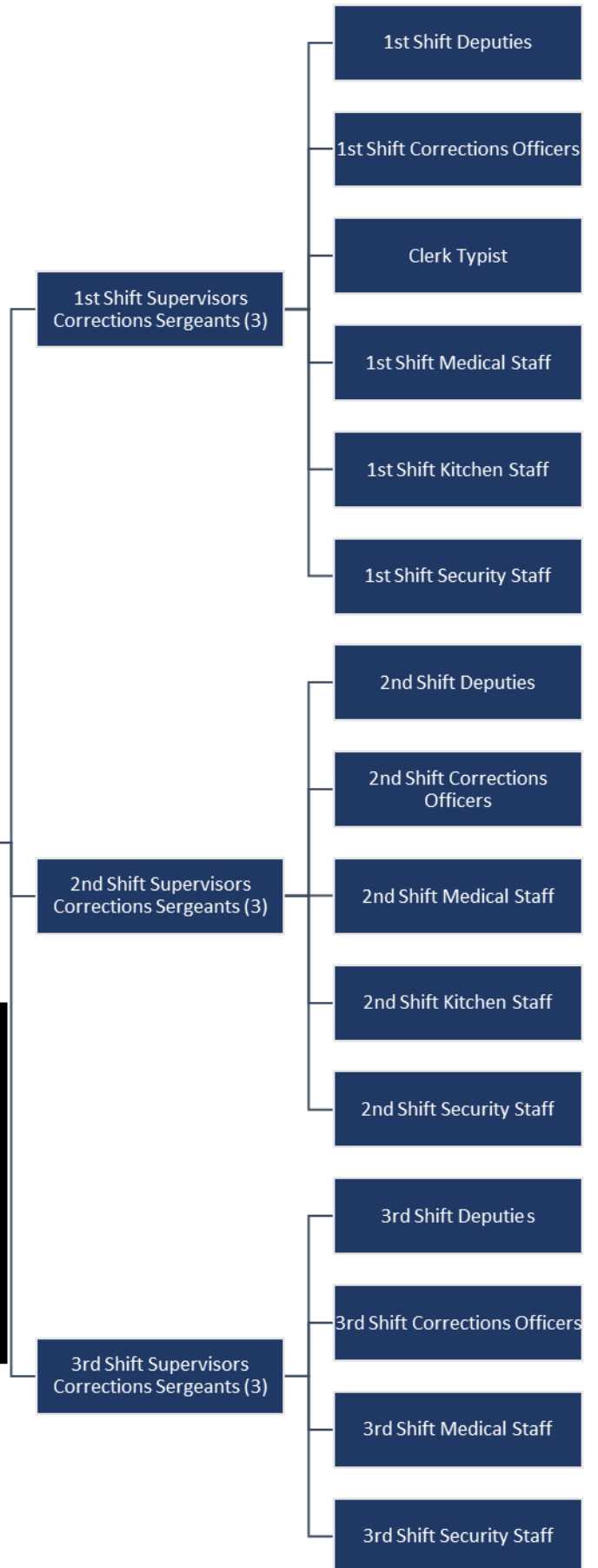
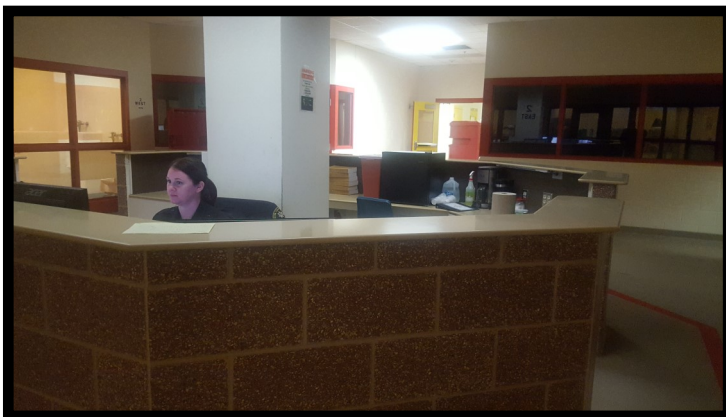
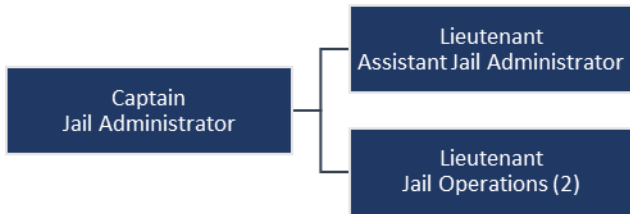
The Racine County Jail (RCJ) is one of the largest pre-detention facilities in the state of Wisconsin, with a maximum bed space for 876 detainees. The facility covers an entire city block in the downtown area of Racine complete with it's own health and mental health services, privatized food and commissary services, one of the state's only in-house AODA programs, Chaplain's programming, law library, visiting area and newly innovated video visitation services.

Religious and educational needs are met through the Racine county Jail Chaplaincy Program. The Racine County Jail is committed to providing programs that aim to serve inmate's needs and the needs of the community.

The Racine County Sheriff's Office Jail Administrator, Captain Doug Wearing, retired in December of 2018. The Racine County Sheriff's Office Jail Division was then overseen by Captain Bradley Friend.



# Racine County Jail Staff



# JAIL

## Racine County Jail Chaplaincy

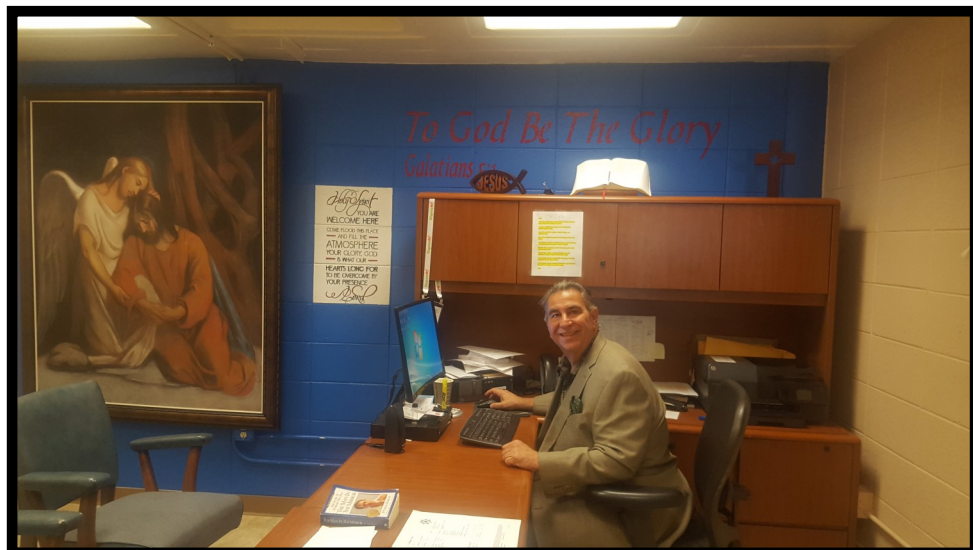
### Jail Chaplaincy Program

The Chaplaincy Program maintains a web site at:  
[www.racinecounty.com/chaplain](http://www.racinecounty.com/chaplain)

The Jail Chaplaincy Program provides a number of services and programs for inmates who request to be involved.

Chaplaincy programs include:

- Bible Study, including Spanish and Catholic studies
- Alcoholics Anonymous meetings
- One on One mentoring
- High School
- Life Skills – Basic skills in good living
- Pre-Release Assistance – how to obtain clothing, food, etc.
- Self Esteem – Better understanding who you are / who you want to be
- Anger Management – Men & Women
- Communications – learning to express yourself better
- Story Time – a DVD of a parent reading a story to their child
- Issues – Women only
- Domestic Violence – Women
- Library Services
- Drug Abuse Counseling
- Worship Services
- Post Release Support @ 262-898-8585



## Jail Revenues

The Racine County Jail generates revenue from a number of sources, which are detailed in the table below.

Revenue Source	2012	2013	2014	2015	2016	2017	2018
SPO Holds	\$246,970	\$228,143	\$229,026	\$164,541	\$187,720	\$240,600	\$280,640
Comm. Sales	\$261,048	\$267,188	\$270,240	\$300,154	\$404,761	\$344,863	\$401,232
Bed Rentals	\$323,117	\$356,155	\$299,497	\$496,537	\$587,680	\$1,532,582	\$2,560,686
Inmate Phones	\$323,238	\$317,583	\$315,114	\$308,744	\$321,911	\$617,305	\$828,446
Other Municipalities	\$136,884	\$121,992	\$121,066	\$117,992	\$175,744	\$58,912	\$53,808
Huber Law	\$271,743	\$255,035	\$239,672	\$229,720	\$238,033	\$199,463	\$227,837
SS Reimbursement	\$69,600	\$51,000	\$53,000	\$28,000	\$65,800	\$40,400	\$15,478
Dept of Public Instruction Detention Lunch	\$36,613	\$56,525	\$34,158	\$75,085	\$67,457	\$63,986	\$60,365
<b>Totals</b>	<b>\$1,346,096</b>	<b>\$1,653,621</b>	<b>\$1,561,773</b>	<b>\$1,720,773</b>	<b>\$2,049,106</b>	<b>\$3,098,111</b>	<b>\$4,428,492</b>



## Jail Population

Persons are admitted to the Racine County Jail for numerous reasons. Some of the causes are:

- Sentenced Inmates (Huber and General Population)
- Pre-trial Detainees
- State Probation Holds
- Holds for Other Jurisdictions
- Returned on Writs

<b>Average Daily Jail Population</b>							
	2012	2013	2014	2015	2016	2017	2018
Jan	655	676	703	640	653	683	770
Feb	651	689	699	642	672	640	776
Mar	646	698	652	667	702	627	763
Apr	631	644	648	686	706	629	752
May	691	658	621	668	732	650	773
June	689	654	666	680	752	685	789
July	669	683	693	697	748	704	777
Aug	681	676	708	714	718	758	782
Sept	716	734	716	686	701	791	793
Oct	713	716	687	659	691	834	747
Nov	687	696	657	675	670	825	740
Dec	666	662	638	667	659	779	718
<b>Average</b>	<b>675</b>	<b>682</b>	<b>674</b>	<b>673</b>	<b>701</b>	<b>717</b>	<b>765</b>





## Racine County Jail Admissions

2012	2013	2014	2015	2016	2017	2018
9,688	9,275	9,144	9,045	8,705	8,140	8,846

## Average Length of Stay in Days

2012	2013	2014	2015	2016	2017	2018
26.4	29.3	29.6	27.4	31.4	32.9	41.2

## Department of Corrections Inmates

2012	2013	2014	2015	2016	2017	2018
2,852	2,856	2,728	2,626	2,413	2,237	2,236



## Racine County Jail Correctional Emergency Response Team (C.E.R.T.)

The Racine County Sheriff's Office Correctional Emergency Response Team. C.E.R.T. is a specially trained tactical response team that responds to disturbances within the Racine County Jail. The team consists of 15 members including a team commander, an assistant team commander and two team leaders. All correctional staff that has successfully completed their probationary period are eligible to try out for the team. The team receives additional training in disturbance resolutions and use of force situations. C.E.R.T. members have access to and are trained with additional equipment that can be used during disturbance resolution. Types of disturbances that the Correctional Emergency Response Team responds to include: cell extractions, dayroom disturbances, riots, or large scale searches, possibly involving uncooperative or violent inmates. C.E.R.T. is based on a team concept where all members work as one unit to achieve a common goal.



## Racine County Sheriff's Office 2018 Financial Summary

	2012	2013	2014	2015	2016	2017	2018
Personnel Costs	\$19,342,753	\$18,876,466	\$19,560,168	\$20,264,168	\$19,588,733	\$22,189,912	\$23,589,203
Operating Expenses	\$4,444,938	\$5,987,868	\$3,794,721	\$4,849,592	\$5,493,530	\$6,019,394	\$6,232,696
<b>TOTAL</b>	<b>\$23,787,691</b>	<b>\$24,864,334</b>	<b>\$23,354,889</b>	<b>\$25,113,760</b>	<b>\$25,082,263</b>	<b>\$28,209,306</b>	<b>\$29,821,899</b>

<b>Revenues</b>							
	2012	2013	2014	2015	2016	2017	2018
General Revenues	\$1,081,354	\$941,477	\$1,088,808	\$1,367,535	\$1,076,248	\$1,467,356	\$1,295,432
Charges for Service	\$2,591,547	\$2,601,774	\$2,563,622	\$2,895,468	\$2,655,203	\$3,891,244	\$5,459,950
Other Revenue	\$184,096	\$301,452	\$273,265	\$261,621	\$348,212	\$342,577	\$282,411
<b>Total Revenues</b>	<b>\$3,856,997</b>	<b>\$3,844,703</b>	<b>\$3,925,695</b>	<b>\$4,524,624</b>	<b>\$4,079,663</b>	<b>\$5,701,177</b>	<b>\$7,037,792</b>
Tax Levy	\$19,930,694	\$21,019,631	\$19,429,194	\$20,589,136	\$21,002,600	\$22,508,128	\$22,784,107

## **Racine County Sheriff's Office 2018 Promotions and Retirements**

### **Promotions**

12/21/2018- Lt. Bradley Friend to Captain  
10/22/2018– Sgt. Brian Van Scyoc to Lieutenant  
12/21/2018– Sgt. Jonathan Massie to Lieutenant  
08/13/2018– Inv. Jonathan Massie to Sergeant  
10/25/2018– Dep. James Evans to Sergeant  
12/21/2018– Dep. Michael Spiegel to Sergeant  
12/22/2018– Dep. James Spranger to Investigator  
11/01/2018– Dep. James Willis to Investigator  
08/16/2018– Dep. Luke Johnson to Investigator  
1/18/2018– CO Andrew Jacobsen to Deputy  
07/01/2018– C. Sgt. Jason Yohn to Corrections Lieutenant  
12/18/2018– CO Erlinda Rodriguez to Corrections Sergeant  
01/16/2018– CO Cynthia Castaneda to Location Specialist

### **Retirements**

Deputy Jonathan Eckblad- 01/03/2018  
Deputy Jeffrey Koellner- 02/16/2018  
Deputy Kelli Koellner- 04/13/2018  
Deputy David Rohner- 11/01/2018  
Captain Douglas Wearing- 12/21/2018  
Investigator Brian Grunze- 12/21/2018  
Deputy Sherry Irek- 12/21/2018  
Deputy William Mahoney- 12/21/2018  
Deputy Scott Ratkowski- 12/21/2018  
Deputy Mark Meisner- 12/21/2018

**Racine County Sheriff's Office  
2018 Sheriff's Active Military Personnel, Awards and In Memoriam**

**Active Military Personnel**

Inv. Kent Milam— National Guard  
Inv. Andrew Willis— US Marines  
Dep. Andrew Sparks— US Army  
Dep. Joseph Fazio— US Army  
Dep. Adam Payne— National Guard  
Dep. Tommy Sharrett— US Navy  
Dep. David Sherrick— US Army  
Dep. Anthony Valenti— US Marines  
CO Andrew Polasky— US Army

**Lifesaving Award Certificates**

Dep. Karen Hernandez

**Certificate of Appreciation and Challenge Coin**

CO Christopher Stiner  
Green Bay PD Det. Dave Steffens

**In Memory**

Sgt. Alan Gabbey, service 1975 to 2006  
Inv. Ralph Grant, service 1971 to 1990  
Dep. David Ryan, service 1980 to 2001

## Acknowledgements

It was with the cooperation of many that this report has come to fruition.

This report represents another year of the Racine County Sheriff's Office history, progress and direction. We are moving forward .

Sincerely



Christopher Schmalig

Sheriff

