



FOUNDERS | 3

REAL ESTATE SERVICES

252 East Highland Avenue
Milwaukee, Wisconsin, 53202
414.270.4100 • wwwFOUNDERS3.com

In association with

Venture Architects

Governmental Planning and Design

212 North 25th Street
Milwaukee, Wisconsin 53233
414.271.3359 • www.ventarch.com



Agenda

Introductions

1. Master Plan Study Goals
2. Big Picture
3. Recommendation
 - a. Human Services
 - b. General Government
 - c. Sheriff's Office
 - d. Courts
 - e. Public Works & Development Services
4. Budgets

Questions & Answers



Master Plan Study Goals



Master Plan Study Goals

- Space Needs Study For All County Departments, Except Highway
- Plan for the Future (5 to 10 Years & Beyond)
- Address
 - Functional Inefficiencies
 - Functional Adjacency Issues
 - Space Inadequacies
 - Safety & Security Issues
- Establish a set of Steps (Phases) for the Future
- Prepare for Foxconn Impact on Racine County



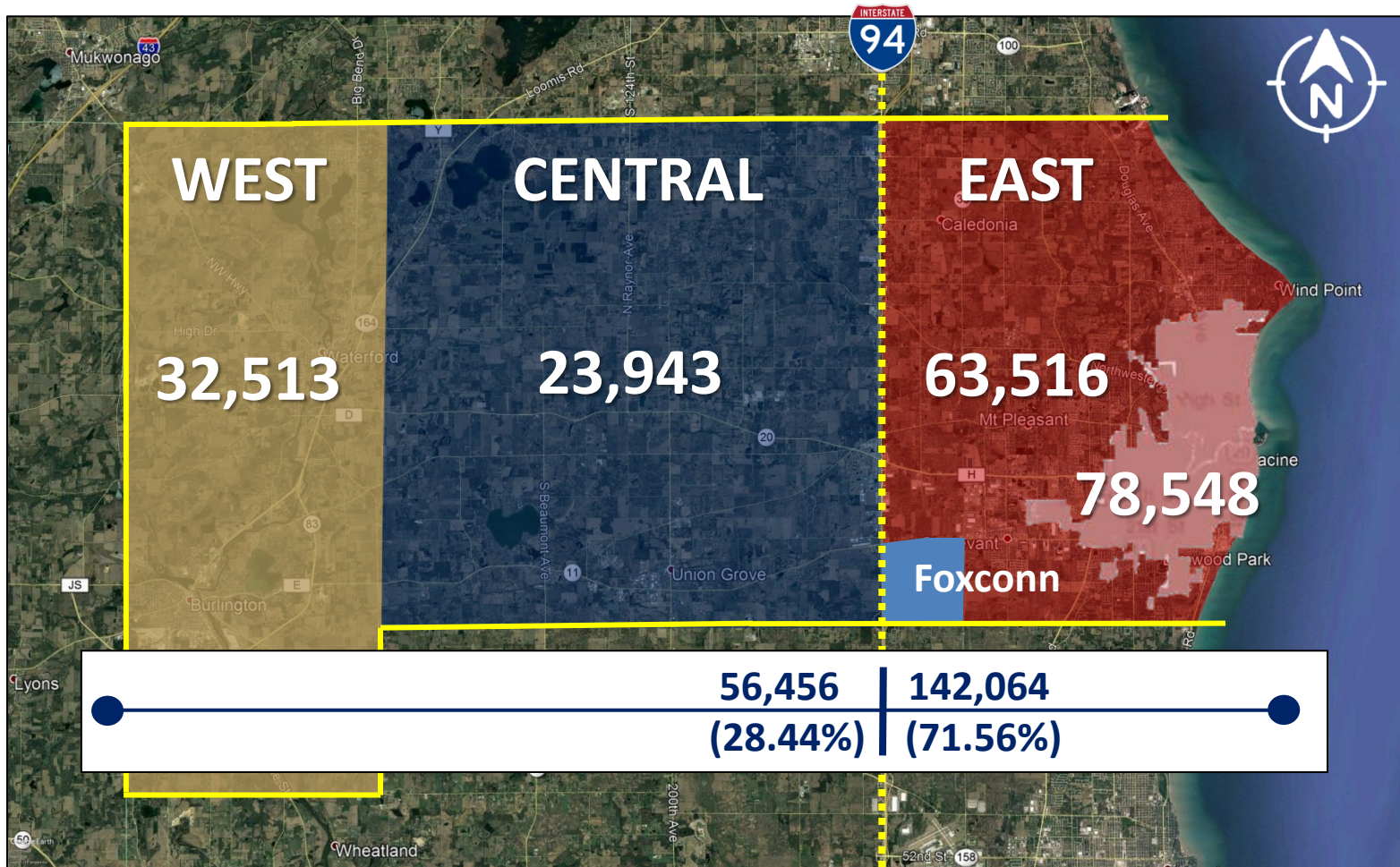
2

Big Picture



Big Picture

■ Racine County – Where People Live

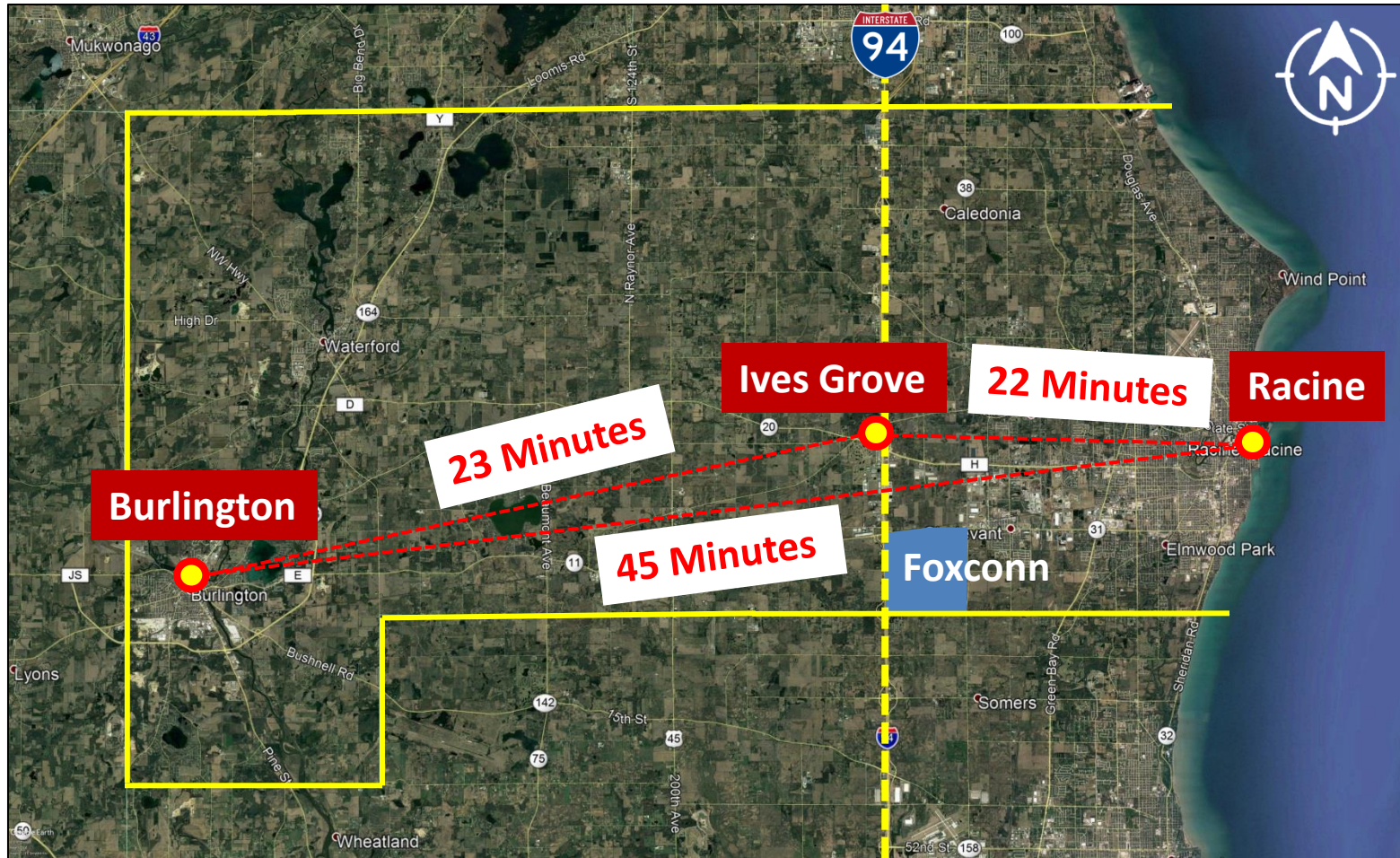


- Racine County Area Populations | Total Population Of 198,520 (2016)



Big Picture

■ Racine County – Travel Times



- **Travel Times Between Racine, Burlington, and the Ives Grove Complex**
(Travel Times Calculated Using Google Maps)



Big Picture

▪ Racine County Departments / Divisions / Programs

Human Services - (12 Divisions)

- Administration / Fiscal / Operations
- Aging and Disability Resource Center
- Behavioral Health
- SAIL Program / Crisis Services Unit / Mental Health Mobile Response/Meals on Wheels
- Economic Support Services
- Economic Support Services – BURLINGTON
- Veteran Services
- Veteran Services – BURLINGTON
- Workforce Solutions / Development Center
- Workforce Solutions – BURLINGTON
- Youth and Family

Courts - (6 Departments)

- Clerk of Circuit Courts
- District Attorney and Victim Witness Office
- Courts, Criminal and Traffic
- Family Court Commissioner's Office
- District Court Administrator (District 2)
- Register in Probate

Sheriff's Office – (5 Divisions)

- Administration
- Jail
- Operations
- Support Services
- Water Patrol

General Government – (14 Departments)

- Corporation Counsel
 - ✓ Office of Child Support Enforcement
- County Board of Supervisors
- County Clerk
- County Executive
- Emergency Management
- Finance / Budget / Purchasing / Payroll
- Human Resources
- Human Services – BURLINGTON
- Information Technology
- Medical Examiner
- Print and Mail Shop
- Racine County 911 Communications Center
- Register of Deeds / Land Description
- Treasurer
- UW-Extension – Main Office – BURLINGTON

Public Works and Development Services – (8 Divisions)

- Building and Facilities Division
- Development Services Division
- Engineering Services Divisions
- Highway Division
- Land Conservation Division
- Land Information Division
- Reef Point Marina Division
- Parks Division

Other – (4 Miscellaneous)

- Belle Harbor Marina
- Heritage Museum

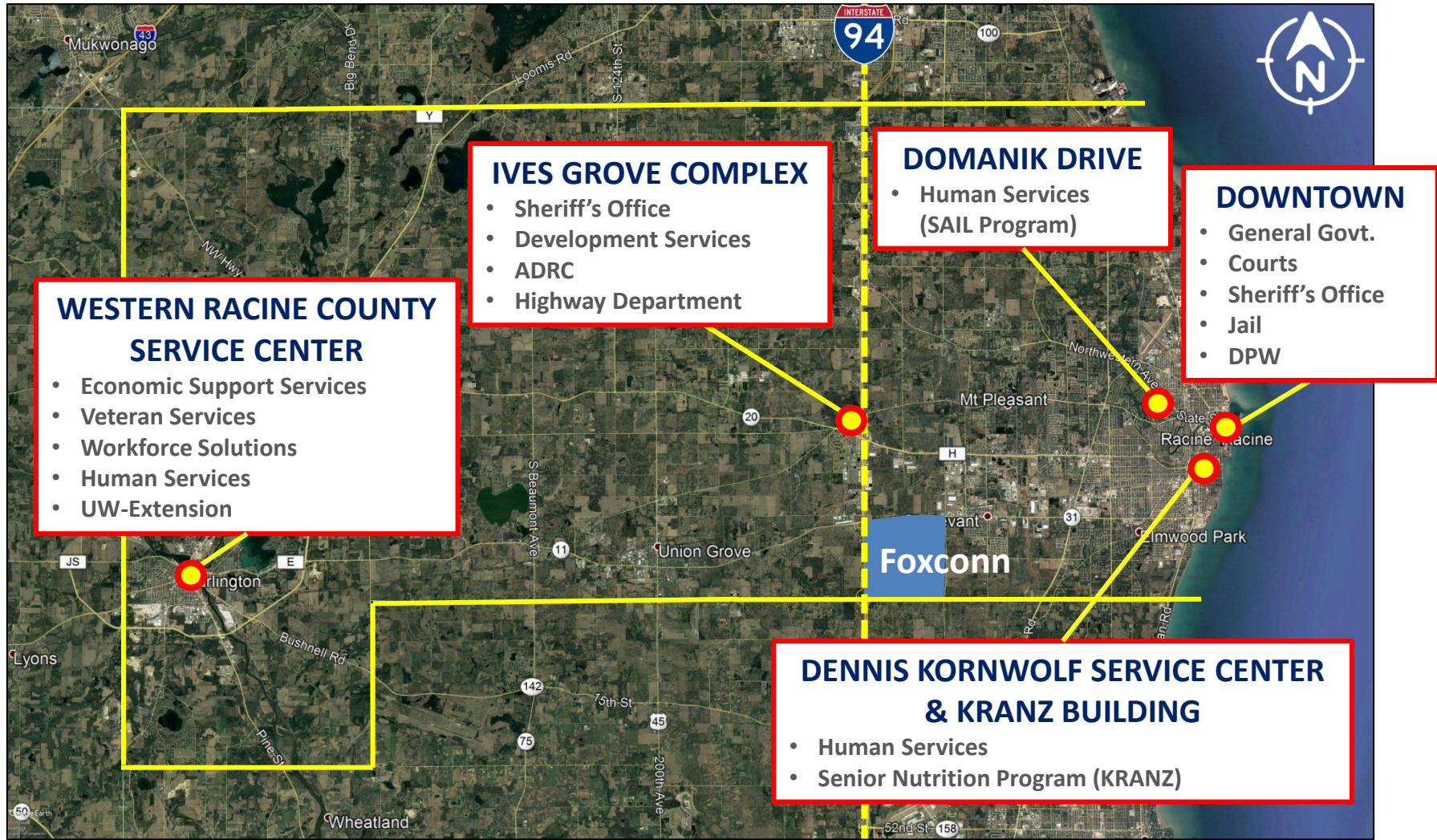
Burlington

- Leasing From Burlington
(7 Year Lease Starting September 2018)



Big Picture

■ Racine County Departments – Current Locations





Big Picture

- **Benefits to Racine County**
 - Better Accessibility to All County Residents
 - Improved Operations Through Consolidation
 - Room for Future Growth
 - Improved Parking For All



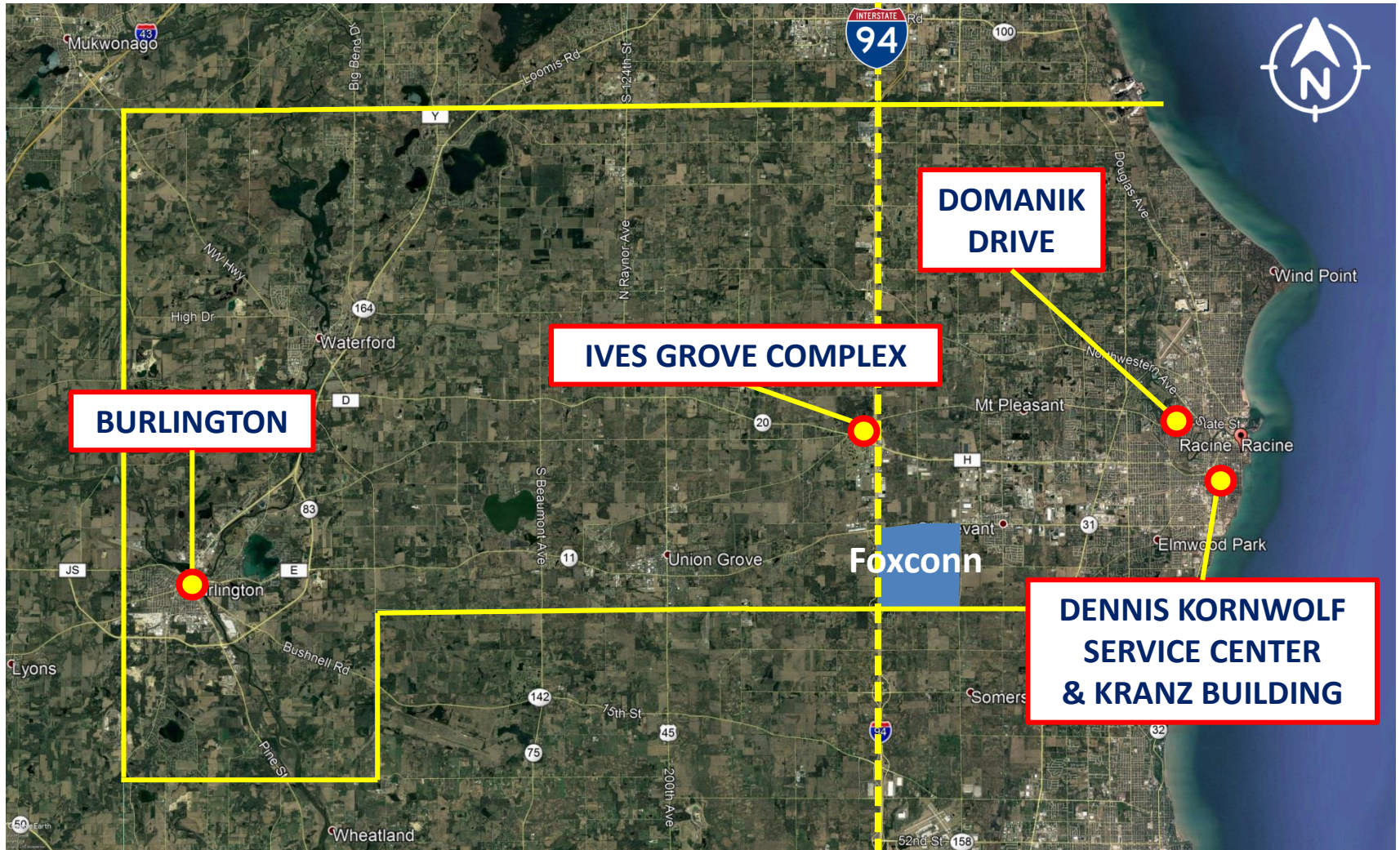


a. Recommendation – Human Services



Recommendation

Human Services – Current Locations





Recommendation

Human Services – Anticipated Growth (Next 5-10 Years)

Division	% Increase
Workforce Solutions	30%
● 45 Persons	● 59 Persons
Behavioral Health Services	30%
● 120 Persons	● 156 Persons
Youth & Family Services	10%
● 90 Persons	● 99 Persons
ADRC	10%
● 37 Persons	● 41 Persons
Economic Support	10%
● 95 Persons	● 105 Persons
Veteran's Services	100%
● 6 Persons	● 12 Persons
Child Support	10%
● 31 Persons	● 34 Persons
Administrative/Fiscal/Operations	10%
● 29 Persons	● 32 Persons
Total = 453	Total = 538



Recommendation

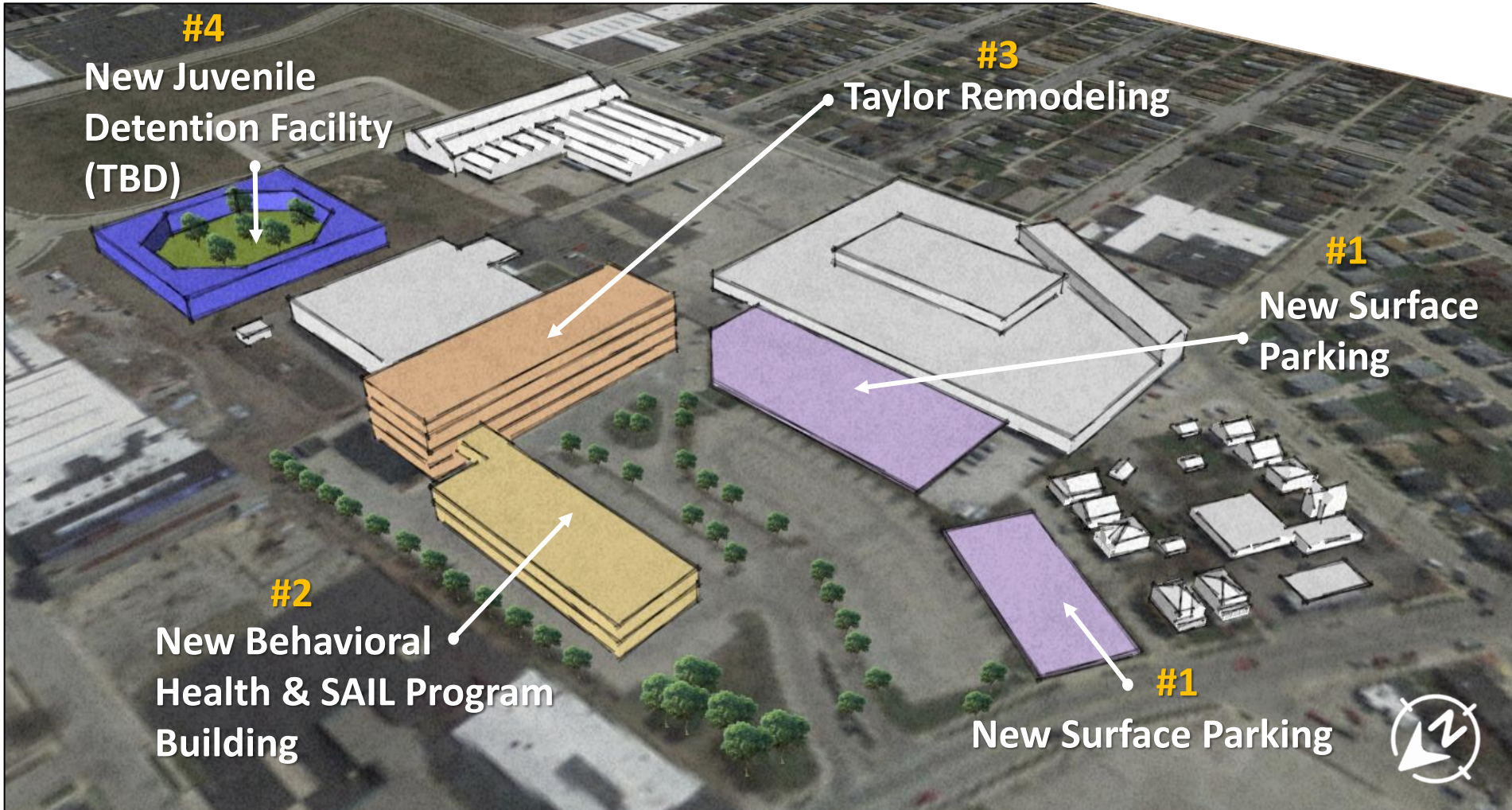
- **Human Services – Recommendation**
 - Consolidate All Services to Dennis Kornwolf Service Center (DKSC)
 - Construct New Building for Behavioral Health / SAIL at DKSC
 - **SAIL = Stabilization Assessment, Information, and Linkage**
 - Construct New Juvenile Detention Facility and Juvenile Courtroom (Location TBD)
 - Restructure DKSC to Improve Operations





Recommendation

■ Human Services – Recommendation



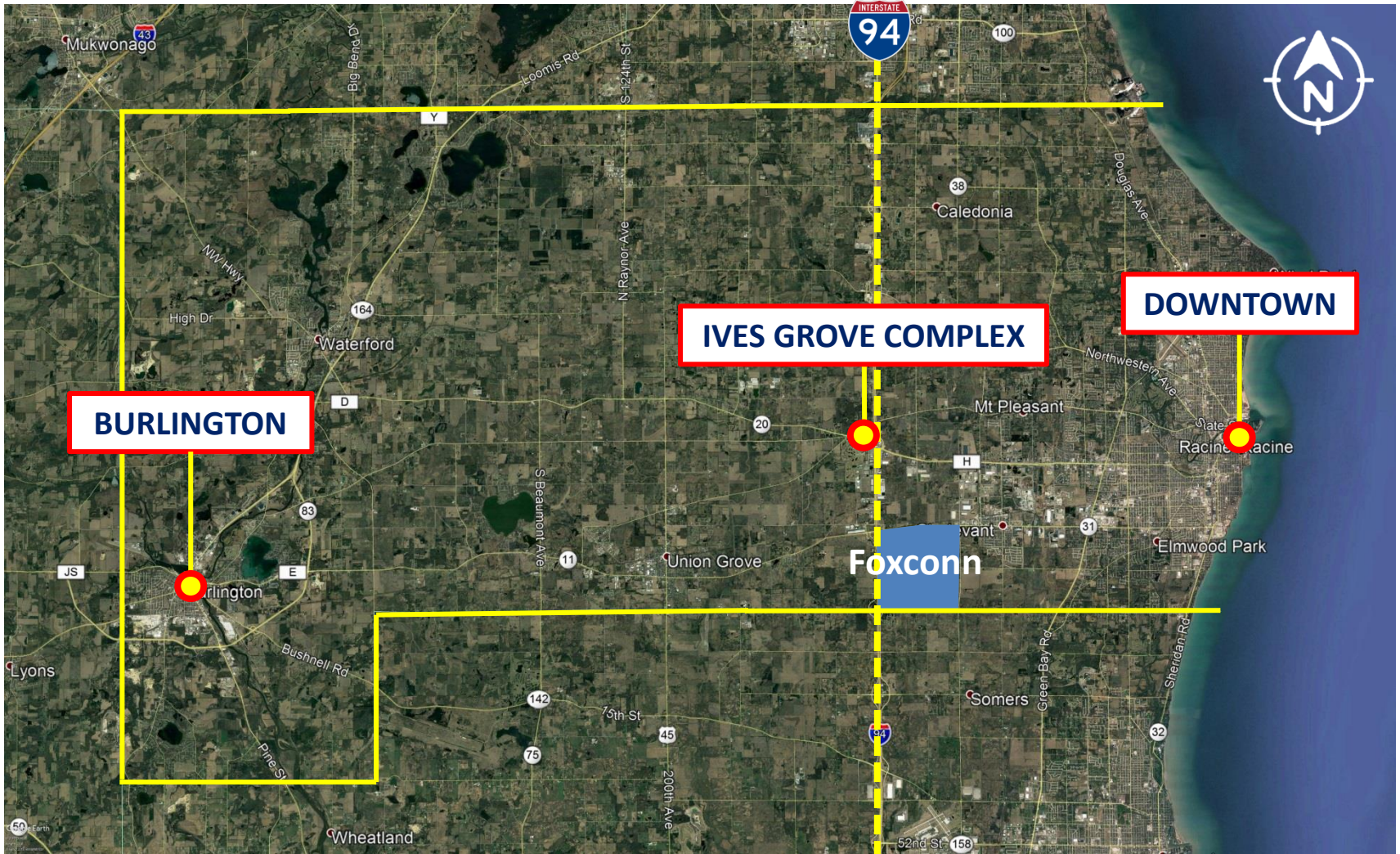


b. Recommendation – General Government



Recommendation

General Government – Current Locations





Recommendation

- **General Government – Recommendation**
 - Consolidate All General Government Operations to Ives Grove Complex
 - Including ADRC & UW-Extension
 - Explore Opportunities to Bundle Departments For Greater Efficiency



Courthouse

Ives Grove Complex (Optional Sites)

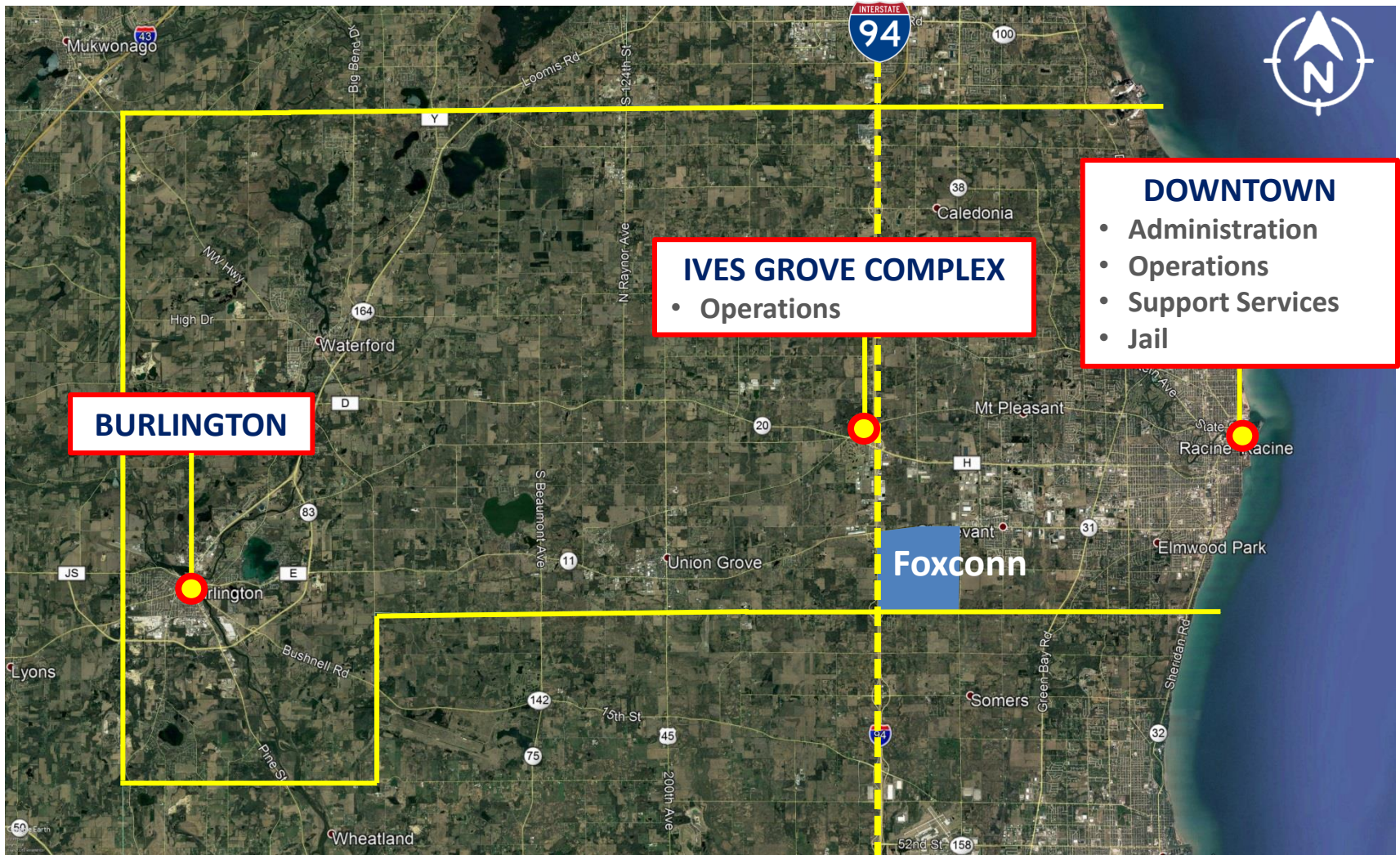


3

c. Recommendation – Sheriff’s Office



Sheriff's Office – Current Locations





Recommendation

▪ Sheriff's Office – Recommendation

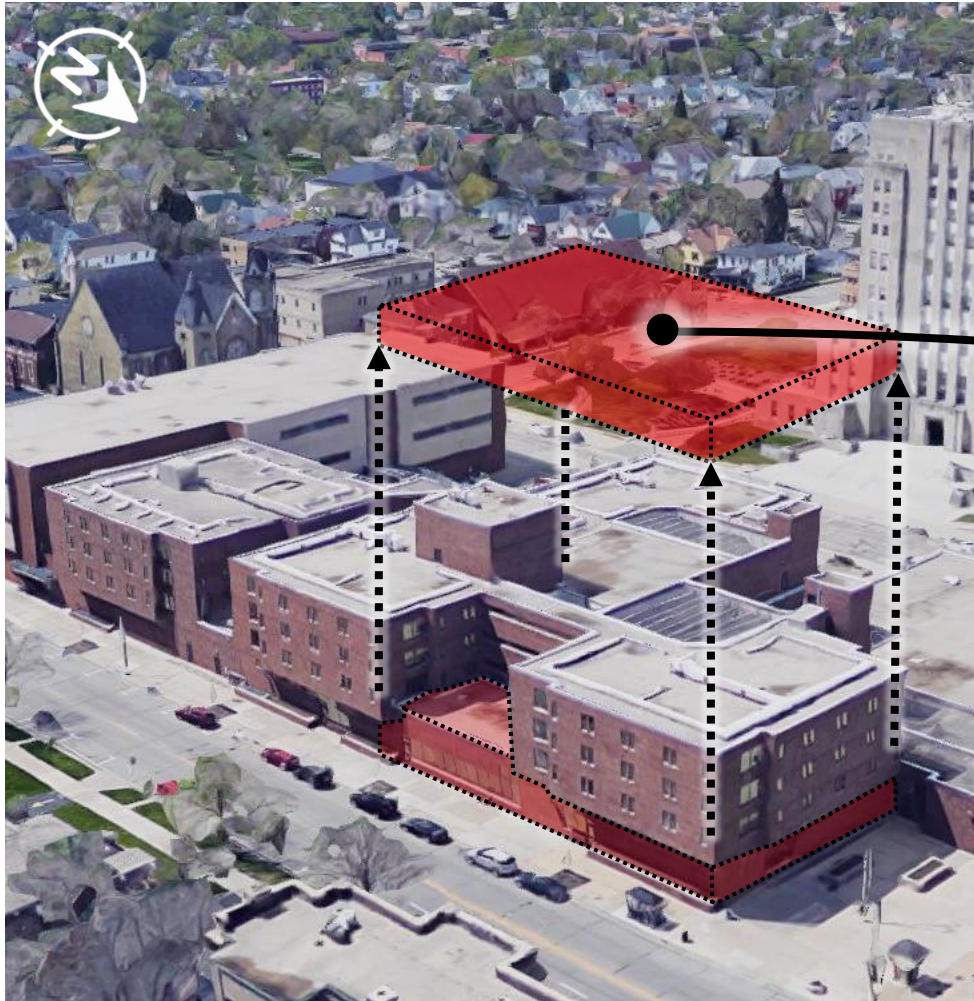
- Consolidate Operations Division to Ives Grove Complex
- Records to Stay at Downtown Law Enforcement Center
 - Future records Will be Online Via “The Cloud”
 - Future Plans to Consolidate All Records
- Jail to Stay at Downtown Law Enforcement Center
 - Jail Needs to be Connected to Courts



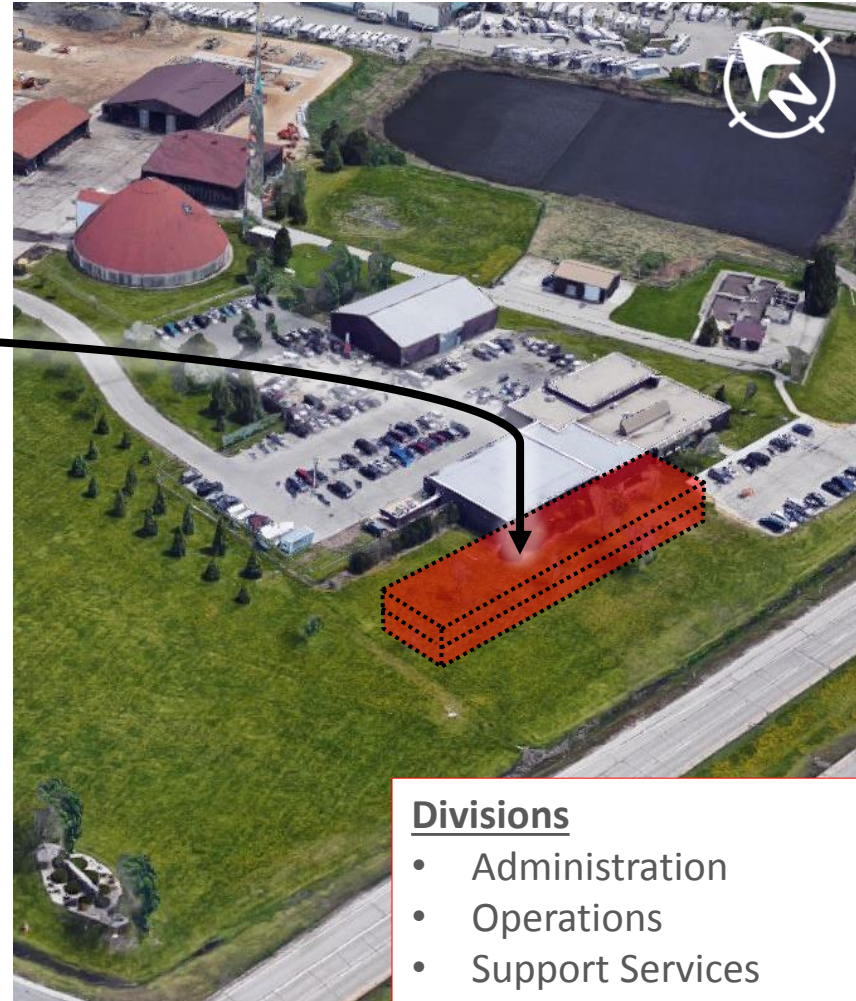


Recommendation

▪ Sheriff's Office – Recommendation



Law Enforcement Center



Sheriff Patrol Station

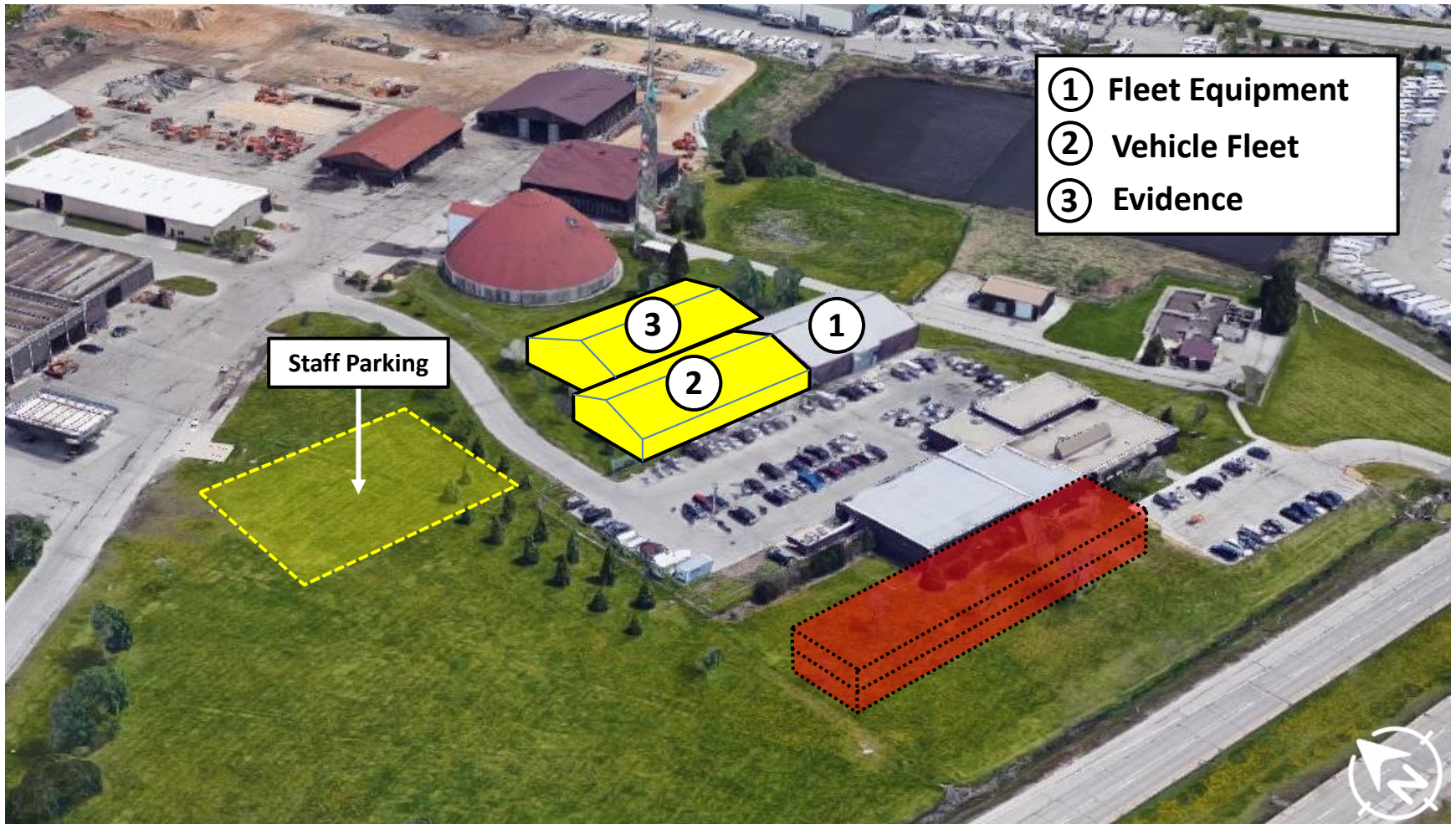
Divisions

- Administration
- Operations
- Support Services



Recommendation

▪ Sheriff's Office – Vehicle Storage Recommendation





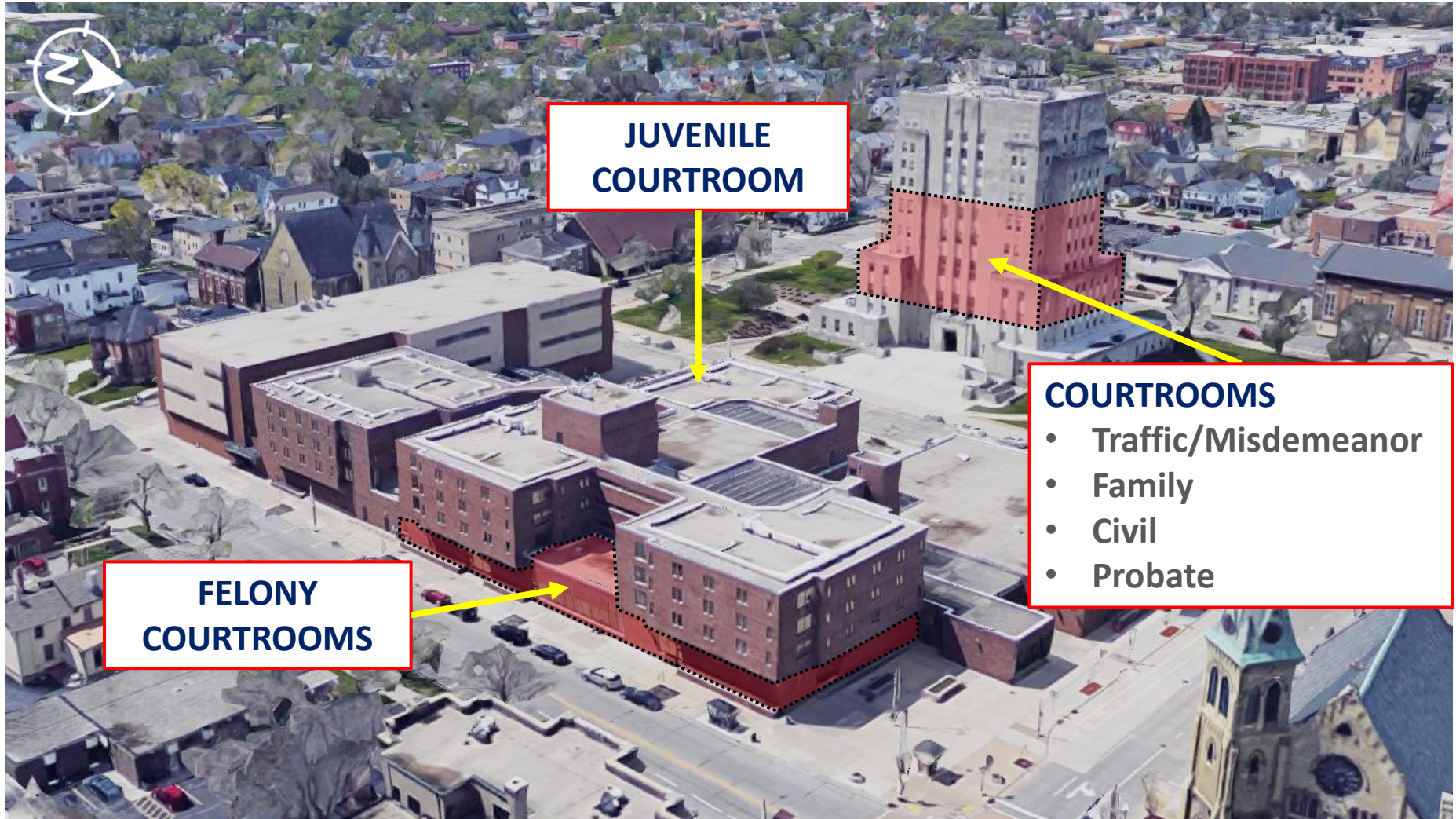
3

d. Recommendation – Courts



Recommendation

▪ Courts – Current Locations

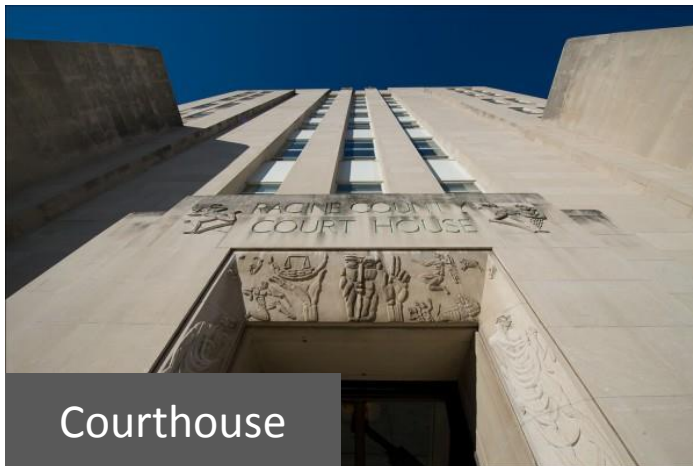




Recommendation

▪ Courts – Recommendation

- Move In-Custody Courtrooms From Courthouse to Law Enforcement Center to Improve Safety & Security
 - Create 3-Way Separation For In-Custody Courtrooms (Judges & Staff / Public / Inmates)
- Relocate Juvenile Courtroom to New Juvenile Detention Facility to Eliminate Juvenile Transportation





Recommendation

■ Courts – Recommendation



**Remodel
Courtroom
Suite at LEC**

**Move Traffic &
Misdemeanor
Courtroom from
Courthouse to LEC**

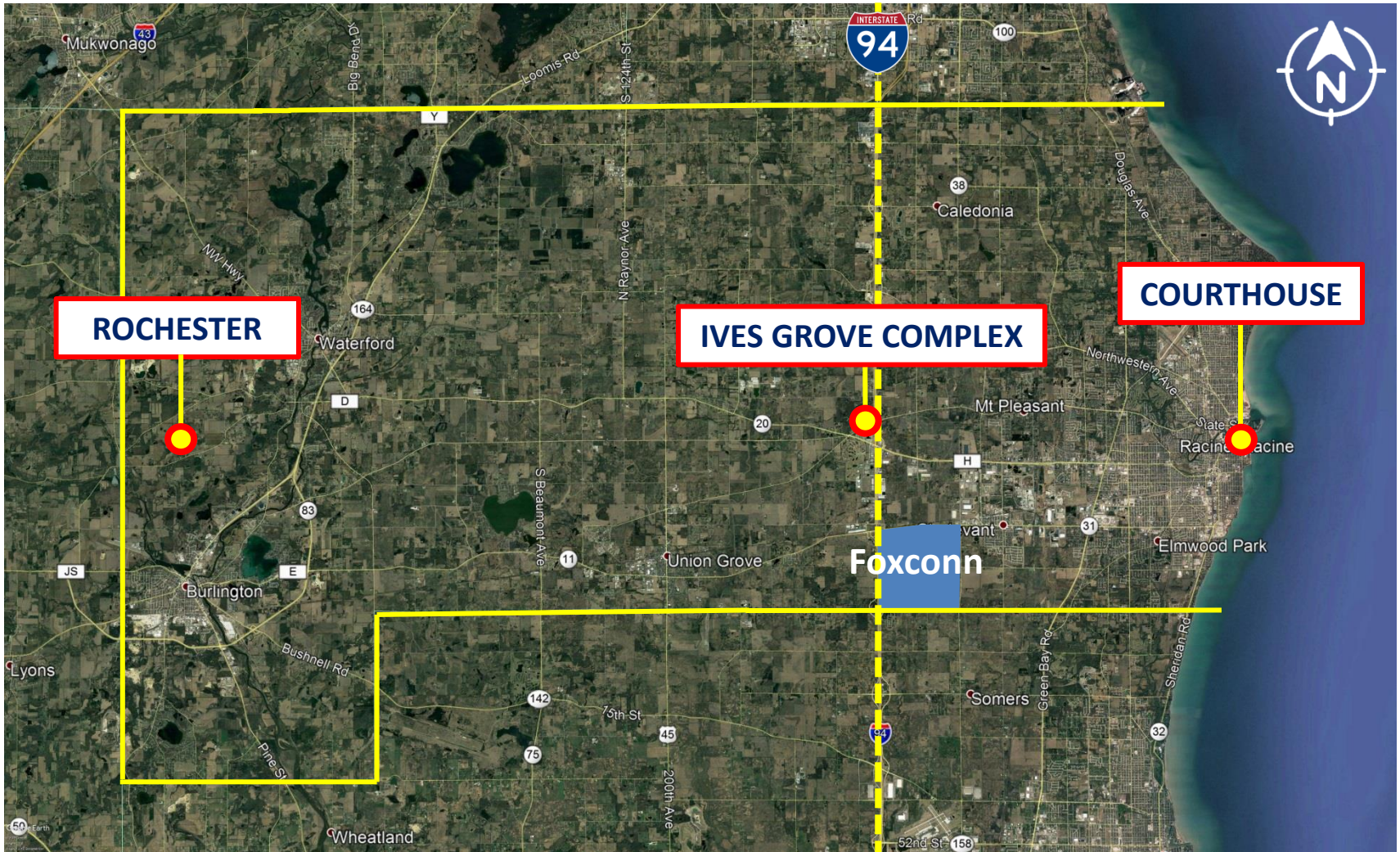


e. Recommendation – Public Works & Development Services



Recommendation

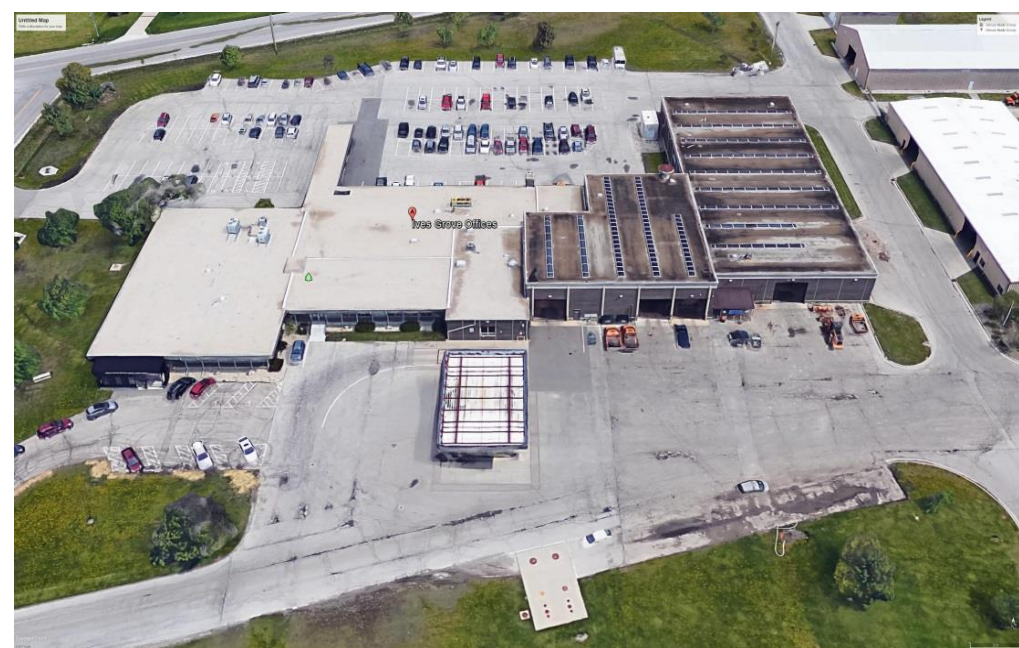
Public Works & Development Services – Current Locations





Recommendation

- **Public Works & Development Services – Recommendation**
 - Consolidate All Operations to Ives Grove Complex
 - Expand Into Vacated Space (Formerly ADRC)





Budgets



Budgets

■ Summary (Bid 2019 Numbers)

Department	Estimated Project Cost
Human Services	\$14.86 Million to \$15.96 Million
General Government	\$22.58 Million to \$23.38 Million
Sheriff's Office	\$19.62 Million to \$20.42 Million
Courts	\$6.04 Million to \$6.54 Million
Public Works & Development Services	\$2.0 Million to \$2.2 Million
Total Estimated Project Costs:	\$65.1 Million to \$68.5 Million

