

Pritchard Park

Environmental Improvements

Presented by Root-Pike Watershed Initiative Network
October 17, 2018



Restoring, Protecting and Sustaining the Root-Pike Basin Watersheds

Funding Partners by Phase



Pritchard Park – Water Quality and Habitat Improvements



Approximate Boundary of Delineated Wetland (4 acres)

Tallgrass & Shrub Seclusion Strip

Wetland Seed Restoration Mix

Prairie Seed Restoration Mix

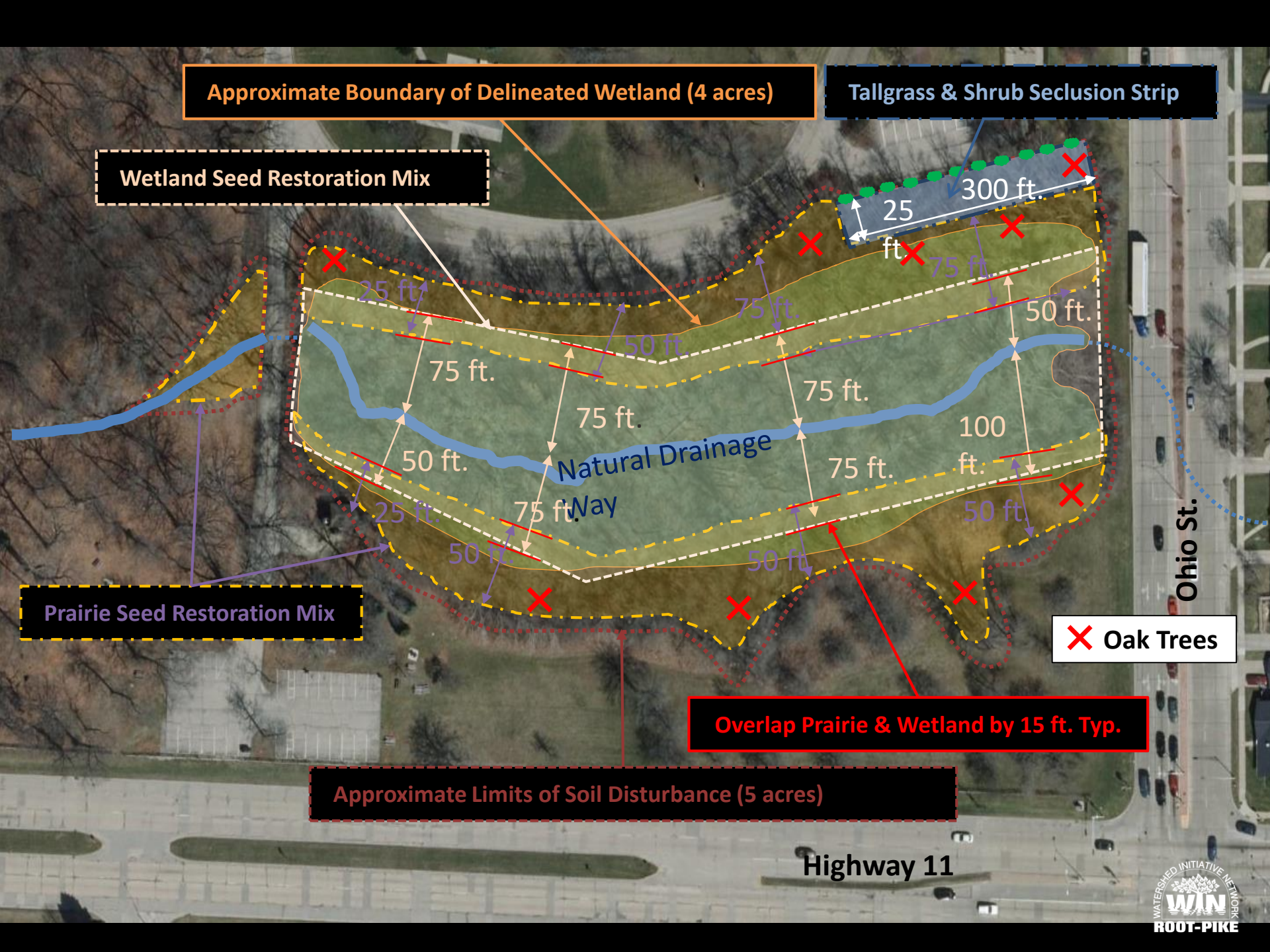
X Oak Trees

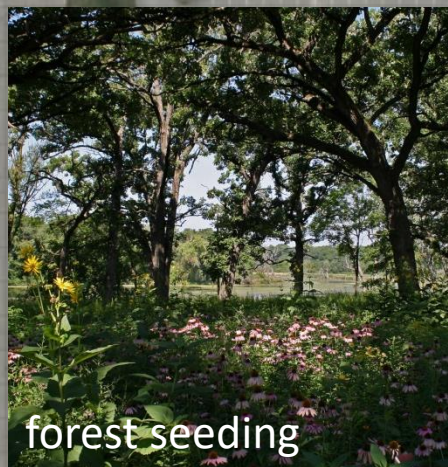
Overlap Prairie & Wetland by 15 ft. Typ.

Approximate Limits of Soil Disturbance (5 acres)

Highway 11

Ohio St.





forest seeding



Wetland scrape



runoff from
impervious surfaces

PRITCHARD PARK

THE VISION: Wetland Scrap & Forest Planting

runoff from
impervious surfaces

to restored wetland and
Pike River direct drainage

incorporate one acre wetland scrape
to improve water quality downstream

PRITCHARD PARK

THE VISION:

Pond Buffer Plantings

selectively remove invasive plants and replace with native species in order to improve the water quality of the pond and Pike River direct drainage

runoff from
impervious surfaces

to Pike River
direct drainage



PRITCHARD PARK

THE VISION: Pollinator Swales

runoff from impervious surfaces

berms/swales
planted with
native flowers

to wetland and Pike
River direct drainage

