

# RACINE COUNTY SHERIFF'S OFFICE

A TRADITION SINCE 1836



## 2016 ANNUAL REPORT

## Table of Contents

Message from the Sheriff .....	3
2016 Organizational Chart .....	4
Mission Statement .....	5
2016 Sheriff's Office Accomplishments .....	6
2016 Sheriff's Administration .....	7
Racine County Sheriff's Office Operations Division .....	9
I-94 Corridor C.O.P.S. ....	13
STEU C.O.P.S .....	15
Criminal Investigations Bureau .....	16
Evidence Custodian .....	17
Metro Drug Unit .....	18
Water Safety Patrol .....	20
Recreational Patrol .....	21
K-9 Unit .....	22
Dive Rescue Team .....	23
SWAT Team .....	25
Crisis Negotiation Team .....	26
Crisis Intervention Team .....	27
Honor Guard .....	28
Deputy Friendly .....	29
Support Services .....	30
Courts, Conveyances and Security .....	32
Planning and Training .....	33
Records Bureau .....	34
Racine County Sheriff's Office Jail Division .....	35
Jail Chaplaincy Program .....	37
Jail Revenues .....	39
Jail Population .....	40
Racine County Sheriff's Office CERT Team .....	42
Financial Summary .....	43
Promotions, Retirements & Active Military Personnel .....	44
Sheriff's Awards .....	45
Acknowledgments .....	46

## Sheriff Christopher Schmaling's Message

Greetings:

The Racine County Sheriff's Office is the chief law enforcement agency in Racine County. Our agency has full law enforcement authority throughout the county, including all the towns, villages, and cities, as well as the waters of Lake Michigan. We provide the following specialized functions:

- Metro Drug Unit
- Civil Process Unit
- Consumer Fraud Investigation
- Criminal Investigations Bureau
- Water Patrol
- SWAT Team
- Dive/Rescue Team
- Crisis Negotiators

The Sheriff's Office is also responsible for the operation of the Racine County Jail. The jail's rated capacity of 876 persons makes it one of the largest in the state.

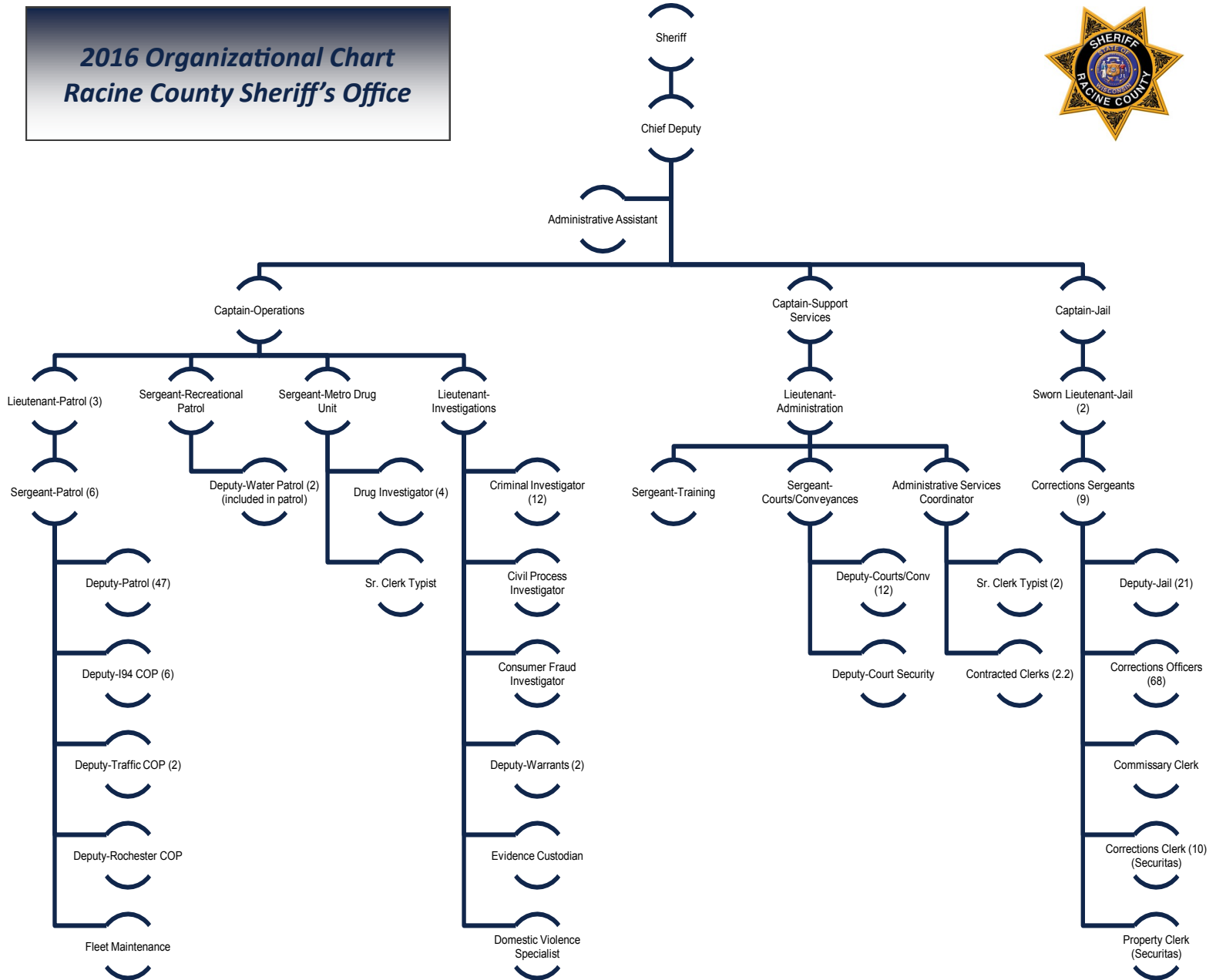
The professional staff of our agency remains dedicated to our mission of providing the core services that help maintain public safety, peace, and order in Racine County. We also remain committed to utilizing our resources in the most efficient and responsible manner possible. Our citizens expect these things, and deserve them. It is our great privilege to deliver these services to them.



Sincerely,  
Christopher Schmaling, Sheriff  
Racine County, Wisconsin

A handwritten signature in black ink that reads "Christopher Schmaling". The signature is written in a cursive, flowing style.

**2016 Organizational Chart  
Racine County Sheriff's Office**



## **Racine County Sheriff's Office Mission Statement**

In Partnership with the Citizens, and with the cooperation of the communities within Racine County, the mission of the Racine County Sheriff's Office shall be the preservation of public safety, peace and order. This goal shall be met through proper utilization of the available resources in the most efficient manner possible while maintaining the highest levels of professionalism.



## RACINE COUNTY SHERIFF'S OFFICE 2016 ACCOMPLISHMENTS

**Violent Crime**  
26% decrease from  
2015

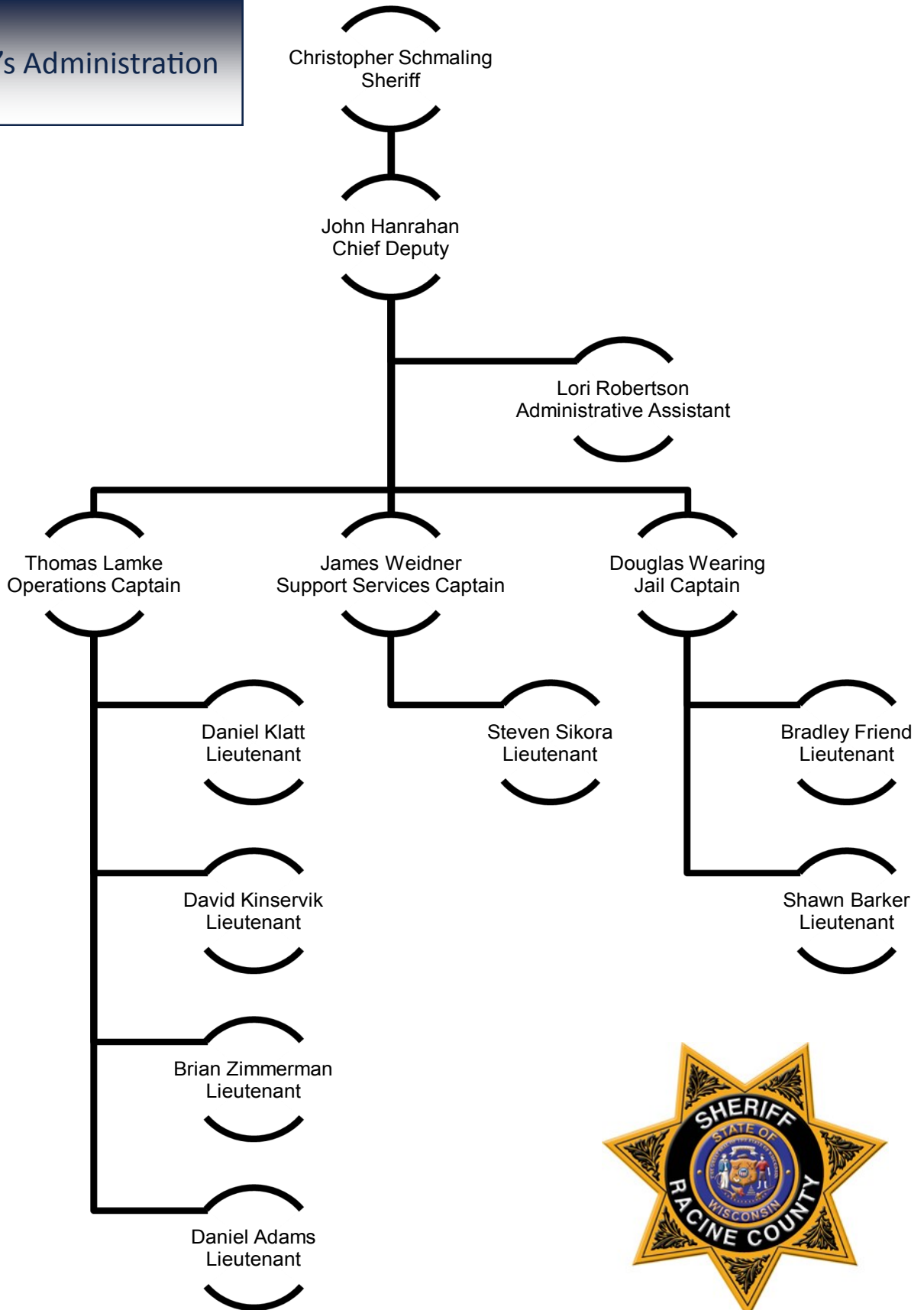
**Property Crime**  
25.9% decrease from 2015

The Sheriff's Office accepted \$373,839 in grant funding in 2016 for the following programs:

- Alcohol enforcement \$42,108
- Seatbelt Enforcement \$45,000
- Justice Assistance Program Grant (Court Security) \$17,444
- HIDTA Award \$52,645
- Alcohol Grant (With KESO) \$44,843
- Alcohol Grant (with MPPD) \$10,743
- FBI Task Force \$32,988
- FBI Anti-Heroin \$68,985
- Speed Grant \$59,083

Uniform Crime Reporting Statistics					
	Offenses			Clearances	
Violent Crime	2015	2016	%	2015	2016
Murder	0	2	200%	—	100%
Forcible Rape	5	3	-40%	100%	100%
Robbery	3	3	—	67%	67%
Aggravated Assault	15	9	-40%	100%	89%
<b>Total</b>	<b>23</b>	<b>17</b>	<b>-26%</b>		
Property Crime					
Burglary	80	39	-51.2%	23%	21%
Larceny Theft	248	201	-18.9%	24%	21%
Motor Vehicle Theft	18	17	-5.5%	11%	18%
Arson	1	0	-100%	100%	0%
<b>Total</b>	<b>347</b>	<b>257</b>	<b>-25.9%</b>		
* Although an increase may have occurred, it is not possible to calculate the percentage change due to a zero amount in the previous year.					

Sheriff's Administration



## 2016 Sheriff's Administration

The Sheriff's Administration is responsible for the management and direction of the entire Office, and ensures that the Office obtains its goals and objectives.

The Sheriff's Office is a large, dynamic organization with ever-growing responsibilities. The Office is composed of many specialized units.

The Office's Administrative Staff provides support services to all operating units within the Office. Support and administrative services include; creating policy and procedure, handling citizen's complaints, accounting, records, training, communications and clerical support.



Operations Captain Thomas Lamke



Support Services Captain James Weidner



Chief Deputy John Hanrahan



Jail Captain Doug Wearing



## **Racine County Sheriff's Office Operations Division**

The Operations Division of the Sheriff's Office consists of Patrol, Investigations and Metro Drug, along with other specialized units. They provide public safety services throughout Racine County.

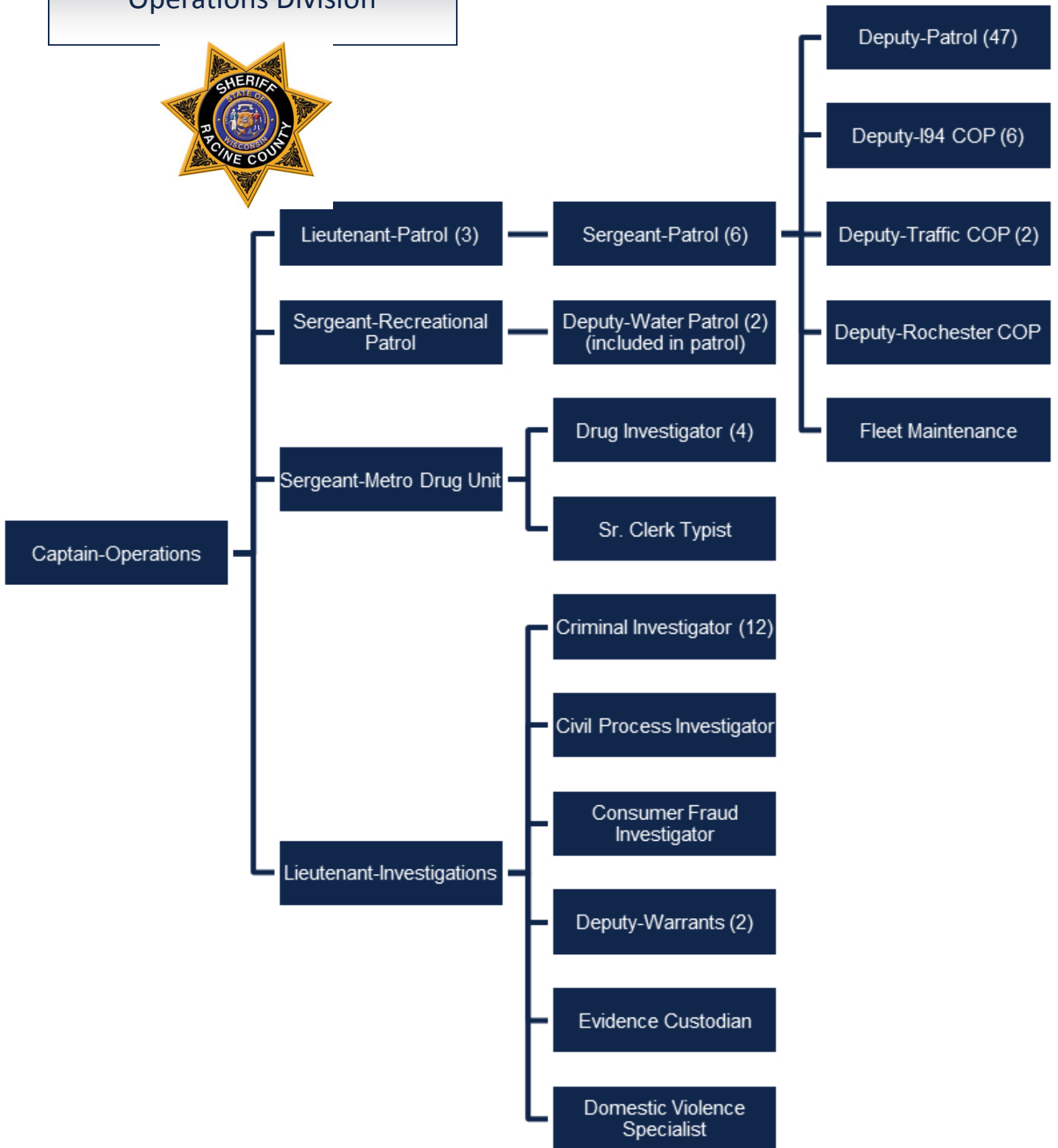
The uniformed patrol operations of the Racine County Sheriff's Office strives to improve the quality of life in Racine County by providing a high level of public service and keeping communities safe through enforcement, prevention, education, and community policing efforts in partnership with communities, other governmental entities, and schools.

The primary mission of the Investigative Bureau is to investigate time-consuming, complex or specialized crimes that are not practical for patrol deputies to investigate. The main goal of the Racine County Metro Drug Unit is to target drug distribution and production. The Drug Unit has secondary roles such as gathering, processing, and disseminating drug intelligence, coordinating drug enforcement with other local, state and federal agencies, and has a role in educating the community about current drug threats.

The Operations Division is commanded by Captain Thomas Lamke.



Racine County Sheriff's Office  
Operations Division



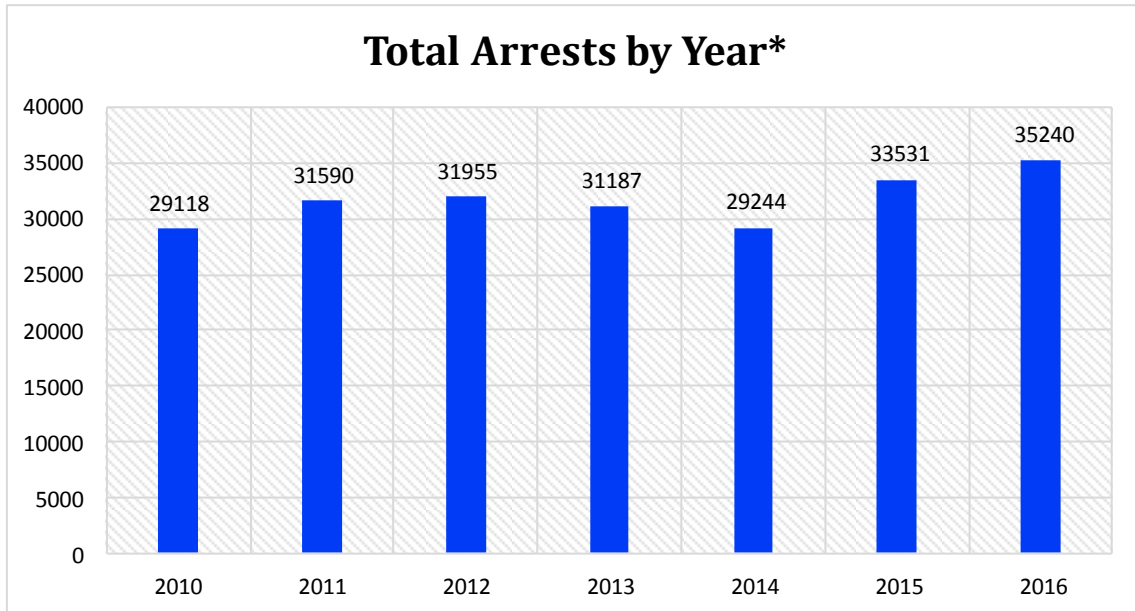
Racine County Sheriff Patrol Operations Statistics							
	2010	2011	2012	2013	2014	2015	2016
Total Miles Driven:	728,340	821,730	1,184,677	888,274	969,601	1,505,943	920,610
Total Hours Worked:	79,096	85,534	88,067	80,541	76,268	83,183	73,351

Complaint Activity							
	2010	2011	2012	2013	2014	2015	2016
Complaints Assigned:	14,683	14,410	15,256	14,917	15,079	15,941	13,850
Deputy Originated:	7,592	10,540	22,007	24,332	25,501	27,120	22,186
Complaint Follow Up	14,948	16,882	14,360	11,568	11,267	12,077	10,357
Complaints Assisted	4,966	5,369	6,029	5,093	4,408	5,328	4,909
<b>Total Complaints</b>	<b>42,189</b>	<b>47,201</b>	<b>57,652</b>	<b>55,910</b>	<b>56,343</b>	<b>60,469</b>	<b>51,302</b>

Other Enforcement							
	2010	2011	2012	2013	2014	2015	2016
Warnings	4,455	5,468	7,786	9,074	6,332	7,549	7,084
Arrest Warrants	718	932	736	715	588	618	548



## 2016 Arrests Statistics



\*Includes COP Arrests and Special Traffic Programs

Patrol Arrest Activity							
	2010	2011	2012	2013	2014	2015	2016
Speeding Citations	11,310	9,914	8,183	9,709	10,178	11,953	12,407
Other Traffic Violations	9,677	11,650	12,250	12,252	7,087	8,521	17,987
OWI	298	313	335	331	371	450	466
Citations from Crashes	429	466	381	414	427	468	425
Parking	1,268	1,048	1,146	1,236	999	1,028	348
Felonies	163	124	155	183	170	171	114
Misdemeanor Arrests	625	708	1,042	945	504	604	487
Ordinance Arrests	732	638	677	659	590	683	791
<b>TOTAL PATROL ARRESTS</b>	<b>26,512</b>	<b>26,872</b>	<b>26,181</b>	<b>25,729</b>	<b>20,326</b>	<b>23,878</b>	<b>33,025</b>

## 2016 I-94 Corridor C.O.P.S.

The Racine County Sheriff's Office has created the I-94 Corridor Patrol. Officers aggressively patrol the Interstate as well as property locations within one mile of I-94 in efforts to make the roadways and businesses in Racine County a safer place to operate motor vehicles and conduct commercial operations. The program is in its fourteenth year of operation, and has made a significant impact on safety in Racine County.

2016 I-94 Corridor C.O.P.S. Activity	
Base Fine	\$534,185.00
Citation Fine	\$1,570,175.80
Speeding Citations	4,169
Miscellaneous Other Arrests / Citations	
OWI Arrests	10
Driver's license violations	569
Registration violations	52
Restraint violations	10
Insurance Violations	113
Weapons Violations	8
Felony Arrests	42
Misdemeanor Arrests	81
Forfeitures	
Property Damage Accidents	51
Personal Injury Accidents	10

Service of Warrants	51
Drug Arrests	74

Drugs seized 2016 (I-94 Corridor)	
THC	606.2 grams
Cocaine	2,250.8 grams
Heroin	0 grams
Schedule II, IV, V Drugs	38 tabs
Schedule III Drugs	0 milligrams
Pills (non-schedule)	40 tabs

2002-2016 I-94 Corridor Activity Summary	
Speed violations	81,221
OWI	735
Driver's license violations (2003-2014)	14,214
Registration violations (2003-2014)	12,709
Restraint violations (2003-2014)	4,761
Weapons violations	237
Warrants/Commitments	4,236

2002-2016 Drugs seized (I-94 Corridor)	
THC	47,893.69 grams or 105.59 pounds
Cocaine	29,620.7 grams or 65.30 pounds
Heroin	391.1 grams or .862 pounds
Other drugs	463.1 grams or 1.20 pounds of Ecstasy, 1,293 tabs/pills of various controlled pills/ schedule II, schedule IV, V 46.2 grams Psilocybin

## STEU C.O.P.S.

In 2010, two new C.O.P. positions were created to function as a specialized traffic enforcement unit with a concentration on state and county highway traffic enforcement.

2016 STEU Statistics	
Base Fine	\$210,225.00
Citation Fine	\$661,587.70
Warrant Bond	\$15,533.06
Total Traffic Citations	2,830
Weapons Violations	4
Felony Arrests	6
Misdemeanor Arrests	25
Forfeitures	24
Property Damage Accidents	22
Personal Injury Accidents	4
Total THC Weight	207 grams
Total Cocaine Weight	0 grams
Total Heroin Weight	0 gram
Total Cash Seized	\$0.00



## Racine County Sheriff's Office Criminal Investigations Bureau

The Racine County Sheriff's Office Investigative Bureau is comprised of 1 Lieutenant and 15 Investigators. One Investigator is assigned to Civil Process and one is assigned to Consumer Fraud Investigations.

The Investigative Bureau has a number of specialized units staffed by highly trained and skilled Investigators.

**Sexual Assault**  
**Child Abuse**  
**Burglary & Theft**  
**Arson Investigations**  
**White Collar & Financial Crimes**  
**Internet Crimes**  
**Traffic Investigations**  
**Consumer Fraud**  
**Death Investigation**  
**Street Gangs**



### 2016 Criminal Investigation Activity Summary

Classification	Total calls for Service	Calls investigated by Bureau
Thefts	332	59
Burglaries	61	35
Sex Offenses	47	38
Physical Assaults	111	30
Fraud	299	37
Robberies	3	4





## Racine County Sheriff's Office Evidence Custodian

The Racine County Sheriff's Office Evidence Custodian is a position held by a Sworn Deputy responsible for the proper collection, identification, and preservation of evidence collected by Deputies and Investigators.

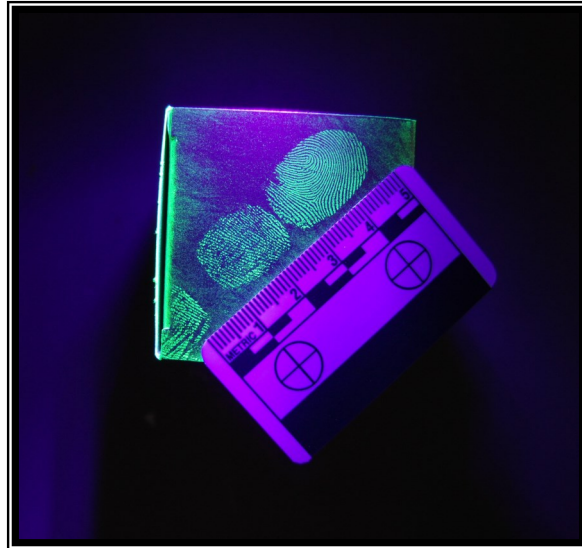
In 2016,  
5,302 items of  
evidence were  
inventoried

The Evidence Custodian maintains the 'chain of custody' of evidence that may be sent to the Crime Lab for analysis.

Collection and processing of evidence is a constantly changing field that demands the Office be current in the latest technological procedures. Our Evidence Custodian and Investigators are highly involved in learning new processes and proper techniques for evidence collection.

In 2016, 361 items were returned to the rightful owner or disposed of, 31 vehicles were processed, and 619 items were taken to the Crime Lab for analysis.

In addition to evidence of criminal activities, 236 blood samples of potential OWI situations were processed through the always-busy Evidence Section and the Wisconsin State Hygiene Lab/Crime Lab.



## Racine County Sheriff's Office Metro Drug Unit

Seven Investigators, including one from the Caledonia Police Department, one supervising Sergeant, and a part time Secretary currently staff the Racine County Metro Drug Unit.

The Metro Drug Unit executed 95 search warrants during 2016

The Unit was created to provide a coordinated and comprehensive effort to investigate and arrest those who engage in the trafficking of illegal drugs within Racine County. The Unit works closely with the FBI, IRS, DEA HIDTA and the Federal Prosecutors Office, as well as other State and local law enforcement agencies such as SEADOG, a 5-county information and intelligence sharing cooperative.

During 2016, there were 1,197 arrests made for various drug charges in Racine County. Of those arrested, 91 were juveniles. There were 670 Felony charges, 323 Misdemeanors, and 91 Ordinance violations.

<b>2016 Metro Drug Activity - Seizures</b>		
<b>Substance</b>	<b>Quantity</b>	<b>Street Value in US Dollars</b>
<b><u>Aderrall</u></b>	212 tablets	1,060.00
<b><u>Alprazolam</u></b>	445 tablets	2,225.00
Cocaine	2,678.0 grams	267,800.00
Crack Cocaine	757.6 grams	53,032.00
Heroin	226.9 grams	45,380.00
<b><u>Hydrocodone</u></b>	495 tablets	2,475.00
Marijuana – THC	47,219.5 grams	472,195.00
Marijuana Plants	185	185,000.00
<b><u>Oxycodone</u></b>	486 tablets	14,580.00
<b><u>Misc Tablets</u></b>	1,153 tablets	5,765.00
<b><u>Total</u></b>		<b>\$1,049,512.00</b>



## Metro Drug Unit Statistics

Metro Drug Unit							
Felony Charges	2010	2011	2012	2013	2014	2015	2016
	373	454	457	545	614	663	670

Metro Drug Unit							
Search Warrants	2010	2011	2012	2013	2014	2015	2016
	75	87	88	83	86	84	95



## Racine County Sheriff's Office Water Safety Patrol

The Racine County Sheriff's Office continues to operate the Water Safety Patrol on Lake Michigan and on inland lakes and rivers throughout Racine County. The Water Safety Patrol operates from April 1<sup>st</sup> until about the second week of November. During the summer months, Water Safety Patrol Deputies are assisted by approximately 5 college student summer employees.



The Water Safety Patrol continues to be partially funded by the Department of Natural Resources. Annually, up to 17% of the costs of operating the Water Safety Patrol are reimbursed to Racine County.

The Racine County Sheriff's Water Safety Patrol responds to assist boaters for a variety of incidents, including accidents, engine failures, and rescue as well as enforcement activities.

<b>Water Safety Patrol Calls for Service 2016</b>	
Boat Accidents	4
Search & Rescue	8
Hazard to Navigation	37
Boating Citations Issued	18
Boating Warnings Issued	68
Vessels Assisted	41
Boat Inspections (Compliance/Safety)	93
<b>TOTAL CALLS FOR SERVICE</b>	<b>252</b>
<b>TOTAL PERSONS ASSISTED</b>	<b>193</b>



Photo courtesy of Racine Journal Times



## Racine County Sheriff's Office Recreational Patrol



The Racine County Sheriff's Office Recreational Patrol is responsible for overseeing snowmobile safety and ATV safety, along with investigating accidents and complaints related to these recreational activities.

The Racine County Sheriff's Office Snowmobile Patrol is supported by the Racine County Snowmobile Alliance and the Department of Natural Resources. Our office submits a year-end report to the Department of Natural Resources after each snowmobile season, and we are reimbursed for a portion of the cost to operate the snowmobile patrol.

Our Motorcycle Patrol unit is made up of sworn officers who must successfully complete an intensive training class before operating the motorcycle in an enforcement capacity. The Sheriff's Office currently has two Harley Davidson police motorcycles. The motorcycle unit performs traffic enforcement throughout the county and has assisted with escorting dignitaries and parades.



## Racine County Sheriff's Office K9 Unit

In 1999, the Racine County Sheriff's Office began its first Canine Unit. With the generous support of many businesses and citizens, the program was launched.

The Canine Unit is currently comprised of 4 K9's and their handlers, thanks to the overwhelming support of the community and several local businesses. In 2012, K9 Friday was placed into service. Friday is a Belgian Malinois/German Shepherd mix. Friday is also a dual purpose K9, trained in narcotics detection, tracking, building and area searches, and articles and evidence searches. Friday is partnered with Deputy Edward Drewitz.

In 2013, additional donations were received, and the Sheriff's Office was able to add two K9's to the K9 unit. K9 Nitro and K9 Murphy were placed into service in November 2013. Both are Belgian Malinois's, and both are dual purpose K9's, trained in narcotics detection, tracking, building and area searches, and articles and evidence searches. Nitro is partnered with Deputy Troy Ruffalo and Murphy is partnered with Deputy David Fisher.

The newest member to our Canine Unit is K9 Nox, a German Shepherd trained in narcotics detection, tracking, building and area searches, and articles and evidence searches. Nox is partnered with Deputy Kurt Clemens. Nox was placed into service in May 2014.



Deputy Drewitz and K9 Friday



Deputy Ruffalo and K9 Nitro



Deputy Fisher and K9 Murphy



Deputy Clemens and K9 Nox

## Racine County Sheriff's Office Dive Rescue Team

The Racine County Sheriff's Office Dive Rescue Team is a member of the Racine County Dive Team (RCDT) which operates under the Mutual Aid Box Alarm System Agreement ("MABAS") Division 102 under the authority and oversight of the Sheriff. RCDT members are comprised of public safety agencies within Racine County including Sheriff's Deputies and Corrections Officers, Fire, Rescue and EMS personnel. RCDT members include rescue/recovery divers, surface rescuers and shore/boat support personnel. At the present time, the RCDT has approximately 60 members.



The primary function of the RCDT is to make every reasonable attempt to save any person that may be drowning or has disappeared under the surface of any body of water within Racine County.

Additionally, the RCDT will make every reasonable effort to recover the body of any person that has been declared a drowning victim in any body of water within Racine County. The team also responds for evidence recovery operations and provides safety for water related events throughout Racine County.

Because the RCDT is comprised of multiple agencies with numerous specialized assets and personnel, it is considered a regional response team and has assisted other agencies of Southeastern Wisconsin and Illinois with their waterborne operations.

RCDT member agencies schedule intensive practical trainings each month and open their respective trainings to other member agencies. All active divers must have a minimum of an advanced certification through a professionally accredited SCUBA certification agency.

The RCDT has also obtained specialized equipment to make underwater searches safer and faster. This includes an underwater towable video system, diver to diver underwater communications, surface supplied air system, and a diver to surface video system. Rescue boats are staged east and west of I-94 for rapid deployment to any body of water in Racine County.

Many RCDT members have taken continuing education courses and are certified in such specialties as: Advanced Open Water, Rescue Diver 1 & 2, Medical Dive Specialist, Ice Diver, Wreck Diver, Night Diver, Computer Diver, Deep Diver, Cave Diver, Equipment Repair Specialist, Swift Water Rescue, Underwater Investigator, Underwater Death Investigator, Nitrox Diver, Staged Decompression Diver, Advanced Tri-Mix Diver, Advanced Gas Blender, Dive Master, and Dive Instructor.

**The Racine County  
Sheriff's Office Dive  
Rescue Team  
completed 1,080 Hours  
of Proficiency Training  
in 2016**

## Racine County Sheriff's Office Dive Rescue Team

### Dive Team – 2016 Calls for Service

Evidence Recovery	1
Assisting Other Jurisdictions	6
Water Safety Events	2
Public Relations Events	8
Additional Training Events	3
Obstruction Removal	1





## Racine County Sheriff's Office SWAT Team

The Racine County Sheriff's Office SWAT Team is comprised of deputies, investigators and supervisors from all areas of the Sheriff's Office.

Team members train regularly to assist Racine County Law Enforcement agencies with serving high risk warrants, fugitive apprehensions, resolving barricaded subject and hostage situations, and addressing other high risk law enforcement operations as needed.



Regular hands on and classroom training combined keeps team members skills at the level needed to operate in these high risk environments.



## **Racine County Sheriff's Office Crisis Negotiation Team (CNT)**

The Racine County Sheriff's Office Crisis Negotiation Team (CNT), consists of 11 sworn members of various ranks throughout the Sheriff's Office. The primary goal of the CNT is to create a peaceful resolution to often extremely volatile situations. This is accomplished with empathy, active listening, and verbal de-escalation techniques. Typical calls may involve a person barricaded in a building, someone threatening harm to themselves or others, or a wide variety of other crisis events that threaten the safety of the community.

Upon joining the team all members attend an initial block of advanced training. From there they receive ongoing monthly training. All members also attend additional courses and seminars to enhance their skills. The CNT has received training from many sources, including, the FBI, National Tactical Officers Association (NTOA), and Wisconsin Crisis Negotiators Association.



## Racine County Crisis Intervention Team

Racine County started the current C.I.T. program in the April 2009 through the assistance of then County Executive McReynolds and the local branch of NAMI (National Alliance of Mental Illness) who saw a need to train local members of the Law Enforcement Community who were responding to calls for service involving those suffering from a mental disorder or in crisis.

Since the program's inception in Racine County, we have had 14 classes graduate, consisting of officers from every Law Enforcement Agency throughout Racine County; approximately 292 Officers have completed the 40 hour course, and 76 Officers have completed the CIT Advanced course.

Officers attending this course of study learn from local experts in the field of mental health and from consumers themselves on ways of better handling their crisis at the time of the call. In short, the CIT works to find better, safer ways to handle these calls.



The Racine County C.I.T. program, partnered with C.I.P. (Crisis Intervention Partner), conducts two 16-hour classes a year geared towards dispatchers, nurses, fire personnel, corrections, HSD and others dealing with people suffering from a mental disorder or in crisis, with approximately 564 trained as of November 2016.

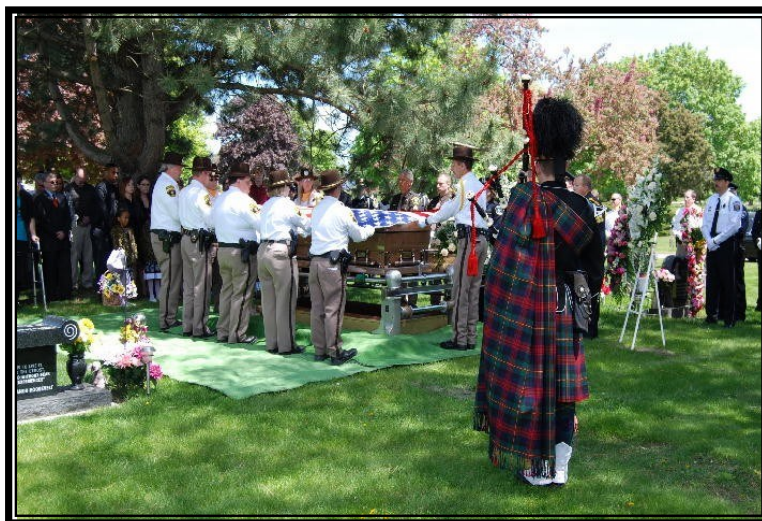
## Racine County Sheriff's Office Honor Guard

The Racine County Sheriff's Office Honor Guard consists of 12 sworn members of the Racine County Sheriff's Office. The Honor Guard is called out for funerals for past and present members of the Racine County Sheriff's Office. The Honor Guard serves at these funerals as a show of respect and honor for the deceased Deputy's service as a Law Enforcement Officer to the county and the Racine County Sheriff's Office.



Using special Honor Guard uniforms and equipment, the Honor Guard performs a casket watch during the visitation, performs pall-bearer duties, sets up the squad procession to the burial site, folds and presents the flag to the family, and arranges the rifle salute, bugler, and bagpiper.

The Honor Guard also attends line-of-duty funerals for deceased officers from other law enforcement agencies throughout the State of Wisconsin and adjoining states as a show of respect for the fallen officer, their families and their law enforcement agency.



## Racine County Sheriff's Office Deputy Friendly Program

The Deputy Friendly program has been very successful for many years. Every year, Deputy Friendly, Deputy Tim Graves, reaches out to thousands of children attending schools located throughout Racine County.

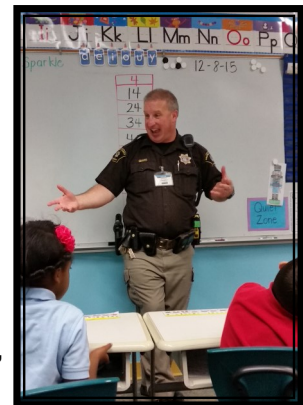
Deputy Friendly's objectives are:

- To provide students with the opportunity to develop an intelligent understanding of his or her rights, responsibilities and obligations as a junior citizen
- To establish a link between students of our communities and uniformed Law Enforcement Officers
- To develop a respectful image of the Sheriff's Office in the minds of students
- To provide a role model that is looked up to with respect



During 2016, Deputy Friendly was involved in the following:

- Visiting preschools and day care centers
- Managing the annual Deputy Friendly Awards Contest
- Bicycle Rodeos
- Safety Town USA Instructor
- Child Passenger Safety Technician
- Tobacco Abatement Program
- Alcohol Awareness Program
- Visit elementary schools in Racine County, educating kindergarten through second grade students on a variety of topics: the job of a police officer, gun safety, stranger awareness, bicycle safety, pedestrian safety and passenger safety
- Visit children in local hospitals and shelters with the Easter Bunny – provide Easter baskets



## **Racine County Sheriff's Office Support Services Division**

The Support Services Division is led by Captain James Weidner. This division is responsible for managing Courthouse and Law Enforcement Center security. The main objective is to provide a safe and secure environment for all men and women who frequent our court facilities.

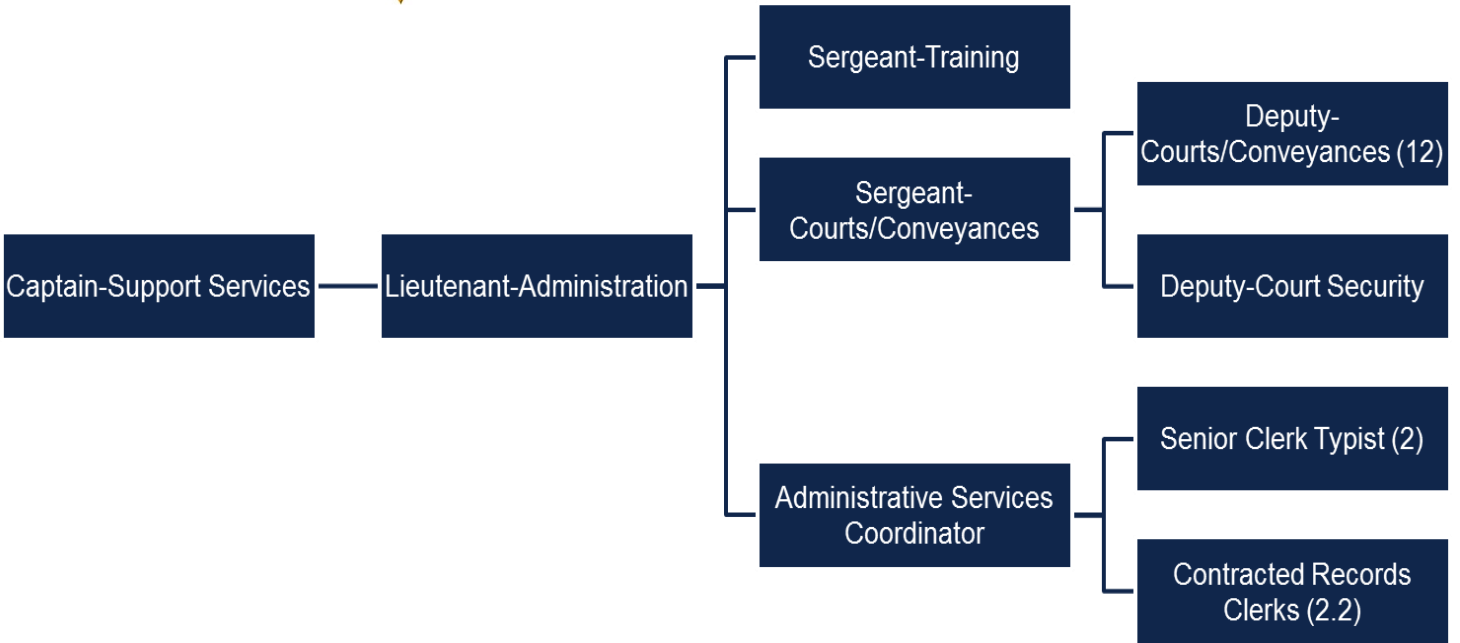
The Records Bureau is also part of the Support Services Division. Records Bureau staff is responsible for the maintenance and storage of all paper and electronic records associated with incidents, investigations, arrests, traffic accidents and inmate records. Records Bureau staff also prepares and processes incoming court documents for Civil Process, Evictions and Sheriff's Foreclosure Sales.

The Planning and Training Office organizes and schedules all trainings for correctional officers, sworn law enforcement officers and civilian staff of the Sheriff's Office in accordance with the Law Enforcement Standards Bureau, an office overseen by the Wisconsin Department of Justice. It is the responsibility of the Training Sergeant to make sure all mandated training requirements are met and recorded through the State of Wisconsin.

In addition, the Support Services Division oversees the department's Records Management system as well as the other electronic data systems. The Racine County Sheriff's Office Support Services Division is one of its "behind the scenes" commands that provide a variety of services to all members of our agency, the public and other law enforcement and criminal justice agencies.



Racine County Sheriff's Office  
Support Services Division



## Racine County Sheriff's Office Courts, Conveyances, and Security

The Sheriff's Office is responsible for providing a safe and secure environment for those visiting our courts facilities. The Courthouse and Law Enforcement Center are staffed with Reserve Deputies at security check points when you enter these buildings. Individual courtrooms are also staffed with Deputies for security.



**COURTHOUSE HOURS:** 7:30am - 5:00pm Monday - Friday

Racine County Courthouse, 730 Wisconsin Avenue, Racine, WI 53403

The public entrance to the Racine County Courthouse is located on Wisconsin Avenue. All those entering the courthouse must go through the security check point and are subject to search. Please see the list below of prohibited items allowed.

**LAW ENFORCEMENT CENTER:** 7:30am - 5:00pm Monday - Friday

Racine County Law Enforcement Center (LEC), 717 Wisconsin Avenue, Racine, WI 53403

The public entrance to the Law Enforcement Center (LEC) is located off of Wisconsin Avenue across the street from the courthouse. All entering the LEC must go through a security check point and are subject to search. Please see the list below of prohibited items allowed.





## Racine County Sheriff's Office Planning and Training

In addition to scheduling trainings for all Sheriff's Office employees in accordance with the Law Enforcement Standards Bureau, the Planning and Training Office oversees operations at the Robert L. Rohner Training Center.

This facility is a joint venture between the FBI, the Racine County Sheriff's Office, and WE Energies. Discussions began during 2003/2004 culminating in a financial commitment by the FBI and WE Energies donating land under the terms of a zero-cost lease agreement. The FBI contributed approximately \$1.5 million for the construction of a building, grounds improvements and a range house to serve the training needs of the FBI, the Racine County Sheriff's Office, and other local police agencies. WE Energies contributed approximately 25 acres of land along with enough clean fill to erect the existing berms on the north end of the range property. The training center is also available to other Racine County Law Enforcement agencies & Gateway Technical College.

The main building on the training center grounds features traditional classroom space on the main level along with bathrooms, showers, and a locker room. The classroom is equipped with audiovisual technology to accommodate various media formats for training and presentations. The lower level contains additional classroom space with a well-cushioned floor and open space for use in dynamic training. The building is climate-controlled year round.

The training center contains both a pistol range and a rifle range to accommodate the different types of weapons systems typically in use by law enforcement. The pistol range is equipped with a range tower that provides a vantage point for observation and it also serves as a control center for the fully automated target system. The architectural design of the training center along with the incorporated technologies ensure that Racine County Law Enforcement training needs are met well into the future.



## Racine County Sheriff's Office Records Bureau

The Racine County Sheriff's Office Records Bureau is responsible for the maintenance, computerization, and storage of all records generated by patrol, investigative and jail personnel in the course of their duties. These records include, but are not limited to; incident reports, accident reports, investigative reports, correspondence related to an incident, citations, and internal documents. The Records Bureau maintains inactive jail files, fingerprint cards, and mug shots as part of its centralized records. Records are stored for seven years prior to the destruction process set forth by Racine County. Some records, due to their nature, are kept past the seven-year period with no possibility of destruction.

In 2016,  
578 Sheriff's Fore-  
closure Notices  
were received, a  
decrease of  
11.21% from  
2014

Records Bureau personnel is responsible for filing, data entry of pertinent information, and storage are the main functions involved with maintaining the Sheriff's Office records. Arrest paperwork is collected, processed, and disseminated to the courts and District Attorney's Office as appropriate.

Records Bureau personnel respond to a wide range of requests from the general public, news media, and other law enforcement agencies, including records checks, open records requests, and general information / directions while reporting to State and Federal agencies regarding crimes, arrests, and accident information.

All clerical functions of the Civil Process Office are handled by Records Bureau personnel. Fingerprinting of out-of-custody defendants, sex offender registrants, juveniles arrested, and applicants and citizens requiring special licenses or certifications are also performed by Records Bureau staff.

Office hours are from 8:00 a.m. - 4:30 p.m. Monday-Friday except legal holidays.

The Records Bureau staff includes one supervisor, three full-time clerks and two part-time clerks. Office hours are from 8:00 AM until 4:30 PM, Monday through Friday excluding legal holidays.

Currently, the Administrative Services Coordinator is responsible for software application administration for dispatch and records management. This includes troubleshooting, training, drafting and implementation of procedures, and quality control for data entry functions. The Supervisor interacts with other networked agencies for software procedures and implementation.

## **Racine County Sheriff's Office Jail Division**

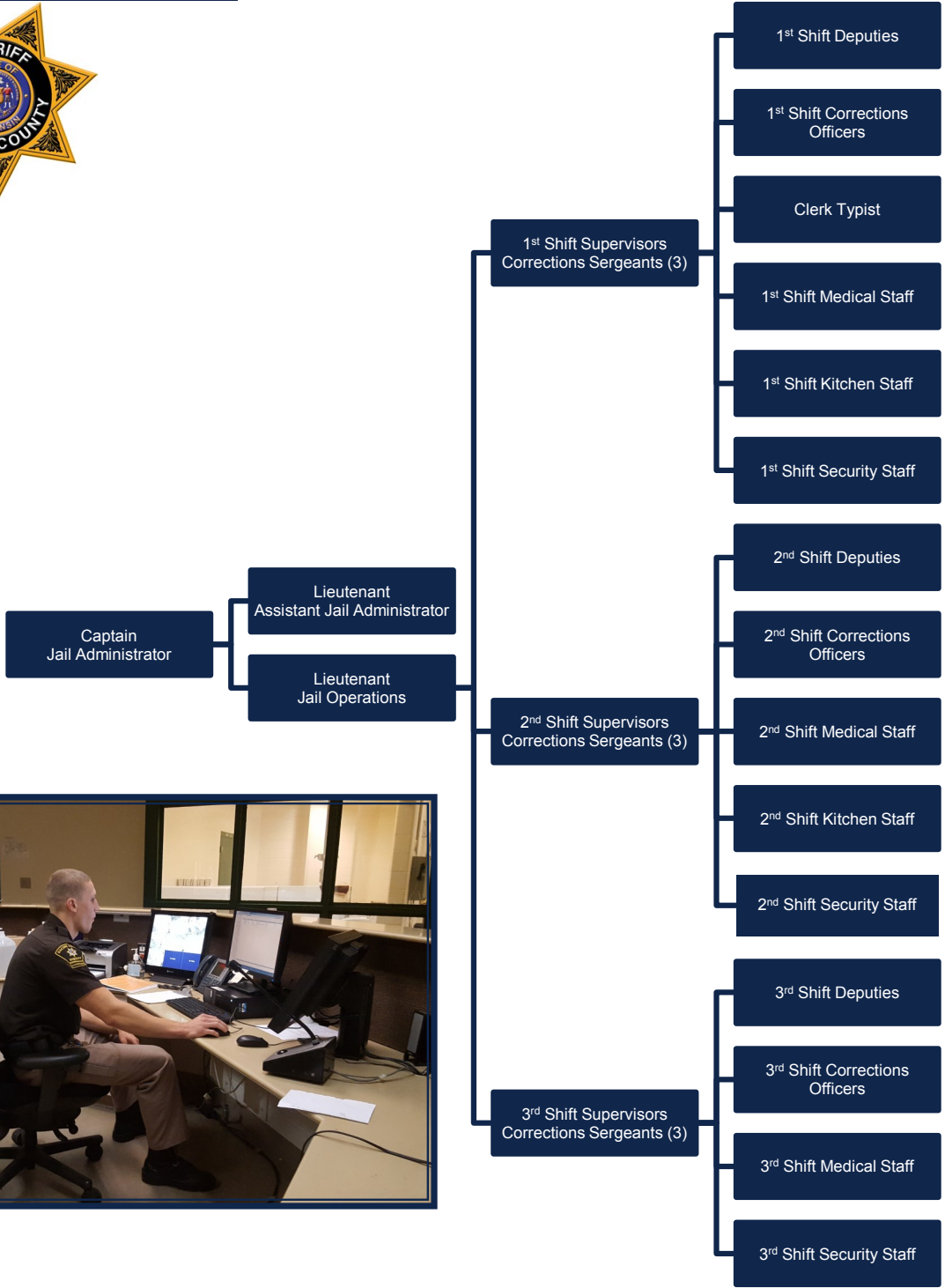
The Racine County Jail (RCJ) is one of the largest pre-detention facilities in the state of Wisconsin, with a maximum bed space for 876 detainees. The facility covers an entire city block in the downtown area of Racine complete with its own health and mental health services, privatized food and commissary services, one of the state's only in-house AODA programs, Chaplain's programming, law library, visiting area and newly innovated video visitation services.

Religious and educational needs are met through the Racine county Jail Chaplaincy Program. The Racine County Jail is committed to providing programs that aim to serve inmate's needs and the needs of the community.

The Racine County Sheriff's Office Jail Division is led by the Jail Administrator, Captain Doug Wearing.



# Racine County Jail Staff





# JAIL

## Racine County Jail Chaplaincy

### Jail Chaplaincy Program

The Chaplaincy Program maintains a web site at:  
[www.racinecounty.com/chaplain](http://www.racinecounty.com/chaplain)

The Jail Chaplaincy Program provides a number of services and programs for inmates who request to be involved.

Chaplaincy programs include:

- Bible Study, including Spanish and Catholic studies
- Alcoholics Anonymous meetings
- One on One mentoring
- High School
- Life Skills – Basic skills in good living
- Pre-Release Assistance – how to obtain clothing, food, etc.
- Self Esteem – Better understanding who you are / who you want to be
- Anger Management – Men & Women
- Communications – learning to express yourself better
- Story Time – a DVD of a parent reading a story to their child
- Issues – Women only
- Domestic Violence – Women
- Library Services
- Drug Abuse Counseling
- Worship Services
- Post Release Support @ 262-898-8585

## **Alcohol and Other Drug Treatment Program (AODA) & Racine County Alcohol and Drug Treatment Court**

In January 2016, Behavioral Health Services of Racine County began to provide a 30-day Alcohol and Drug Treatment Program for inmates referred by a Department of Community Corrections Agent or court-ordered as a part of their sentencing. The program lasts 30 days, including 120 hours using the Living In Balance curriculum, which provides an integrated foundation for recovery from substance abuse. This 30 day program is followed up with six to nine months of continuing care based on the inmate's treatment needs and what level of programming will best support recovery from substance abuse. The goal is to provide and link incarcerated offenders with appropriate substance abuse treatment services in order to interrupt the drug abuse and the criminal justice cycle and lessen the use of criminal justice resources.

### ***Alcohol and Drug Treatment Program***

- ◆ 94 individuals participated in the treatment Program
- ◆ 78 individuals successfully completed the treatment program
- ◆ 5 persons were terminated from the program for behavioral issues

### ***Racine County Alcohol and Drug Treatment Court***

- ◆ 14 graduates from the program
- ◆ 37 new admissions to the program
- ◆ 22 Other discharges from the program

## Jail Revenues

The Racine County Jail generates revenue from a number of sources, which are detailed in the table below.

Revenue Source	2010	2011	2012	2013	2014	2015	2016
SPO Holds	\$268,633	\$207,774	\$246,970	\$228,143	\$229,026	\$164,541	\$187,720
Comm. Sales	\$184,740	\$267,829	\$261,048	\$267,188	\$270,240	\$300,154	\$404,761
Bed Rentals	\$895,507	\$331,349	\$323,117	\$356,155	\$299,497	\$496,537	\$587,680
Inmate Phones	\$400,511	\$296,808	\$323,238	\$317,583	\$315,114	\$308,744	\$321,911
Other Municipalities	\$163,431	\$141,266	\$136,884	\$121,992	\$121,066	\$117,992	\$175,744
Huber Law	\$238,464	\$290,332	\$271,743	\$255,035	\$239,672	\$229,720	\$238,033
SS Reimbursement	\$56,800	\$65,000	\$69,600	\$51,000	\$53,000	\$28,000	\$65,800
Dept of Public Instruction Detention Lunch	\$58,875	\$60,804	\$36,613	\$56,525	\$34,158	\$75,085	\$67,457
<b>Totals</b>	<b>\$2,266,961</b>	<b>\$1,661,162</b>	<b>\$1,346,096</b>	<b>\$1,653,621</b>	<b>\$1,561,773</b>	<b>\$1,720,773</b>	<b>\$2,049,106</b>

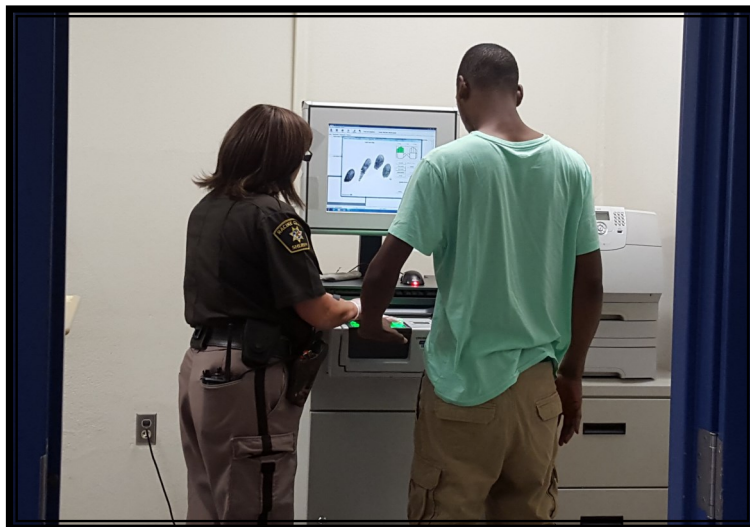


## Jail Population

Persons are admitted to the Racine County Jail for numerous reasons. Some of the causes are:

- Sentenced Inmates (Huber and General Population)
- Pre-trial Detainees
- State Probation Holds
- Holds for Other Jurisdictions
- Returned on Writs

Average Daily Jail Population							
	2010	2011	2012	2013	2014	2015	2016
Jan	770	698	655	676	703	640	653
Feb	747	679	651	689	699	642	672
Mar	720	672	646	698	652	667	702
Apr	663	689	631	644	648	686	706
May	662	693	691	658	621	668	732
June	684	689	689	654	666	680	752
July	678	688	669	683	693	697	748
Aug	702	715	681	676	708	714	718
Sept	731	709	716	734	716	686	701
Oct	717	678	713	716	687	659	691
Nov	694	681	687	696	657	675	670
Dec	650	674	666	662	638	667	659
<b>Average</b>	<b>702</b>	<b>689</b>	<b>675</b>	<b>682</b>	<b>674</b>	<b>673</b>	<b>701</b>





## Racine County Jail Admissions

2010	2011	2012	2013	2014	2015	2016
10,642	9,712	9,688	9,275	9,144	9,045	8,705

## Average Length of Stay in Days

2010	2011	2012	2013	2014	2015	2016
29.2	27.4	26.4	29.3	29.6	27.4	31.4

## Bed Days Saved by Program

	2010	2011	2012	2013	2014	2015	2016	TOTAL
<b>Employment Program</b>	8822	6935	4796	4796	7041	6117	1152	39,659
<b>Day Reporting Center*</b>	13982	12858	12239	12621	13207	12909	6360	84,176
<b>Community Service</b>	1266	996	812	665	853	248	318	5,158
<b>Inmate Workers</b>	2757	2798	2637	2145	2403	1722	1405	15,867
* Day Reporting data through June 2016								



## Racine County Jail Correctional Emergency Response Team (C.E.R.T.)

The Racine County Sheriff's Office Correctional Emergency Response Team. C.E.R.T. is a specially trained tactical response team that responds to disturbances within the Racine County Jail. The team consists of 15 members including a team commander, an assistant team commander and two team leaders. All correctional staff that has successfully completed their probationary period are eligible to try out for the team. The team receives additional training in disturbance resolutions and use of force situations. C.E.R.T. members have access to and are trained with additional equipment that can be used during disturbance resolution. Types of disturbances that the Correctional Emergency Response Team responds to include: cell extractions, dayroom disturbances, riots, or large scale searches, possibly involving uncooperative or violent inmates. C.E.R.T. is based on a team concept where all members work as one unit to achieve a common goal.



## Racine County Sheriff's Office 2016 Financial Summary

	2010	2011	2012	2013	2014	2015	2016
Personnel Costs	\$20,312,669	\$19,272,807	\$19,342,753	\$18,876,466	\$19,560,168	\$20,264,168	\$19,588,733
Operating Expenses	\$4,742,674	\$4,460,159	\$4,444,938	\$5,987,868	\$3,794,721	\$4,849,592	\$5,493,530
<b>TOTAL</b>	<b>\$25,055,343</b>	<b>\$23,732,966</b>	<b>\$23,787,691</b>	<b>\$24,864,334</b>	<b>\$23,354,889</b>	<b>\$25,113,760</b>	<b>\$25,082,263</b>

Revenues							
	2010	2011	2012	2013	2014	2015	2016
General Revenues	\$840,278	\$1,015,660	\$1,081,354	\$941,477	\$1,088,808	\$1,367,535	\$1,076,248
Charges for Service	\$2,747,911	\$1,929,584	\$2,591,547	\$2,601,774	\$2,563,622	\$2,895,468	\$2,655,203
Other Revenue	\$495,267	\$734,490	\$184,096	\$301,452	\$273,265	\$261,621	\$348,212
<b>Total Revenues</b>	<b>\$4,083,456</b>	<b>\$3,669,734</b>	<b>\$3,856,997</b>	<b>\$3,844,703</b>	<b>\$3,925,695</b>	<b>\$4,524,624</b>	<b>\$4,079,663</b>
Tax Levy	\$20,971,887	\$20,063,232	\$19,930,694	\$21,019,631	\$19,429,194	\$20,589,136	\$21,002,600

# **Racine County Sheriff's Office 2016 Promotions, Retirements and Active Military Personnel**

## **Promotions**

07/26/2016 Deputy James Evans to Investigator  
08/26/2016 Corrections Officer Eric Luther to Corrections Sergeant  
12/05/2016 Corrections Officer Tommy Sharrett to Deputy

## **Retirements**

01/27/2016 Deputy Greg Roscizewski  
06/13/2016 Corrections Office Jacqueline Krueger  
07/25/2016 Agent Michael Prochniak  
12/16/2016 Corrections Office Joseph Buckley  
12/22/2016 Deputy Terrance Stardy  
12/27/2016 Investigator Russell Stark

## **Active Military Personnel**

Corrections Officer Andrew Polasky  
Deputy Daniel Fritsch  
Deputy Andrew Sparks  
Deputy Andrew Willis  
Investigator Kent Milam

**Racine County Sheriff's Office  
2016 Sheriff's Awards and In Memoriam**

*Racine County Employees of the Month:*

Deputy Christopher Tatro—February 2016

*Certificates of Appreciation – for Law Enforcement and Community Support*

*Appreciate Plaque – for Law Enforcement and Community Support*

*In Memory:*

John Jacobs, Corrections Sergeant 11/08/2016

## Acknowledgements

It was with the cooperation of many that this report has come to fruition.

This report represents another year of the Racine County Sheriff's Office history, progress and direction. We are moving forward .

Sincerely

A handwritten signature in black ink, reading "Christopher Schmalig". The signature is written in a cursive style with a large, sweeping initial "C" and a long, horizontal stroke across the middle.

Christopher Schmalig  
Sheriff