

Racine County Office of Emergency Management



2016 Annual Report

**OFFICE OF EMERGENCY MANAGEMENT
ANNUAL REPORT
2016**

CONTENTS

LETTER FROM THE EMERGENCY MANAGEMENT COORDINATOR

2016 HIGHLIGHTS

RCOEM MISSION

RCOEM ORGANIZATION

BUDGET/GRANTS OVERVIEW

EMERGENCY PLANNING

TRAINING & EXERCISES

COMMUNITY ENGAGEMENT & PUBLIC OUTREACH

SPILLS/INCIDENTS

OTHER



"Building a Disaster Resistant Community-Making Disaster Resistance a Way of Life"

A Letter from the Emergency Management Coordinator

December 2016

Dear County Executive Delagrave:

I am pleased to present the 2016 Annual Report for the Racine County Office of Emergency Management (RCOEM).

2016 was a good year for emergency management. A relatively minor spring and summer storm season allowed us to focus on planning, exercise and public outreach initiatives.

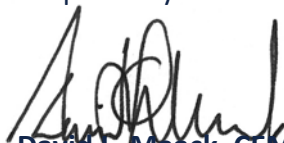
We were notified that Racine County was selected to attend the Community Specific: Integrated Emergency Management Course in Emmitsburg, MD from May 8-12, 2017 and we will be taking 75 individuals for this specialized training and exercise experience. The last time Racine County attended this class was in 1998.



I would like to thank Mike Buse, Jim Dobbs, Skip Twardosz, Dave Voss and Tom Knitter who serve Racine County as volunteer Deputy Emergency Management Coordinators. Their assistance has been invaluable and they are integral members of the emergency management team.

On a personal note, I would like to thank you for your support and participation in emergency management activities. We could not accomplish what we do without your support and leadership.

Respectfully submitted by:



David L. Maack, CEM, CPM, WCEM
Racine County Emergency Management

2016 Highlights

- The Racine County Hazardous Materials Plan was updated along with 63 off-site plans.
- Racine County hosted eight national training classes in 2016.
- David Maack earned TEEEX's Infrastructure Protection certificate.
- The Racine County Emergency Management website was redesigned as a part of Racine County's branding initiative.
- A tabletop exercise was conducted for the Village of Waterford which focused on their Balloonfest.
- David Maack was a breakout speaker at the Humanitarian Disaster Institute's Disaster Ministry Conference held in Wheaton, IL.
- RCOEM participated in the Amber Alert Child Abduction Response Team training and will be a part of a local CART team.
- Racine County was selected to attend the Community Specific IEMC at the Emergency Management Institute in FFY2017.
- RCOEM rolled out the ReadyBadger app, a collaboration between UW Parkside and the emergency management offices in the southeast region.
- David Maack is co-chairing the Southeast Wisconsin Regional Emergency Management Collaboration Workgroup. In addition, RCOEM was represented at the Racine County Fire Chief's Association, Racine County Police Chief's Association, West End Public Works Association, Racine County Land Information Committee, Racine County Court Security Committee, Racine County Traffic Safety Commission, Racine County Executive and Employee Safety Committee's and the Racine County Local Emergency Food and Shelter Board.

RCOEM MISSION

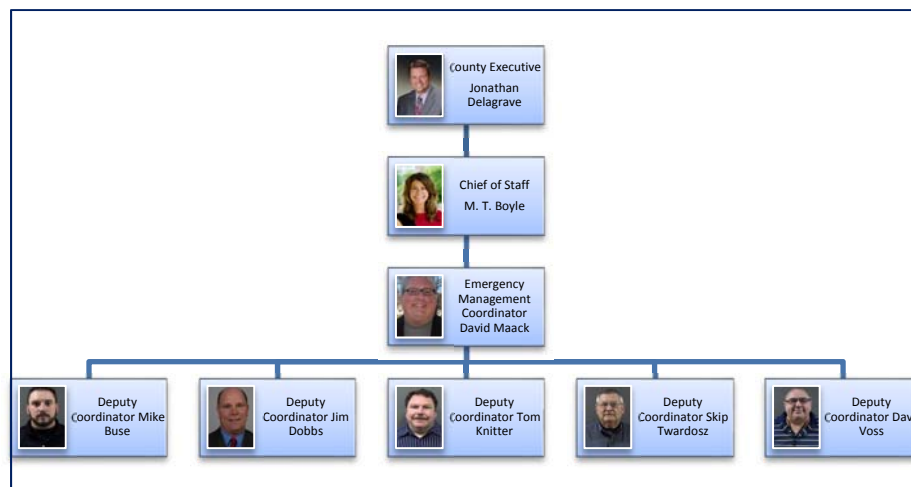
The Racine County Office of Emergency Management (RCOEM) is a planning and coordinating agency charged with developing both comprehensive all-hazard plans and specialized plans for chemical spills and terrorism. In addition, it is required to conduct disaster exercises and drills, provide emergency management-related training, conduct public awareness campaigns and respond to actual disaster or emergency situations. RCOEM provides key coordination and leadership to county departments, stakeholders, residents, and visitors.

Our mission is ***“To assist the community in mitigating known hazards and in preparing for, responding to, surviving and recovering from both natural and man-made disasters”*** and our motto is ***“To build a ‘Disaster Resistant Community’ while ‘Making Disaster Resistance a Way of Life.’”***

Wisconsin Statutes §323.14 requires that the governing body of each county, town and municipality shall adopt an effective program of emergency management consistent with the state plan of emergency management. The office provides emergency management services to all municipalities in Racine County. It works closely with local fire, police and public health departments and is represented on the Racine County Law Enforcement Executives Association and the Racine County Fire Chiefs Association.

RCOEM ORGANIZATION

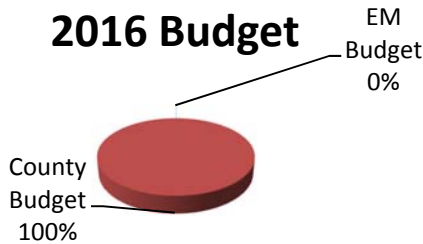
RCOEM is a relatively small department with 1.1 staff. In addition, five volunteer Deputy Emergency Management Coordinators are on call in the absence of the Emergency Management Coordinator.



During an actual disaster, the emergency management coordinator advises the County Executive on emergency management issues. If need be, an Emergency Operations Center is activated and key elected and appointed officials gather in it to manage the overall incident.

BUDGET/GRANTS OVERVIEW

Emergency Management accounts for less than 0.1% of the overall county budget. And because the OEM budget is largely offset by a combination of federal and state grants, it is less than 0.1% of the county tax levy.



	EM Budget	County Budget
FY 2010	126,748	139,561,626
FY 2011	129,089	143,480,831
FY 2012	127,470	142,512,092
FY2013	124,790	140,091,656
FY2014	130,766	145,433,561
FY2015	201,071	147,663,861
FY2016	170,069	145,191,064

Various grant opportunities become available each year. Two grants that RCOEM consistently receives are the Federal Emergency Management Agency's Emergency Management Performance Grant (EMPG), which is supposed to fund 50% of operations, and the Wisconsin Emergency Management's Emergency Planning and Community Right to Know Act (EPCRA) Grant, which funds a portion of our hazardous materials planning activities. The following summary provides a snapshot of grants managed in 2016.

2016 Grants		
Program/Grant Name	Description	Grant Amount
EMPG	The purpose of the Emergency Management Performance Grants is to assist state and local governments in enhancing and sustaining all-hazards emergency management capabilities. The Federal Emergency Management Agency provides the funding to local jurisdictions through the states.	\$ 97809.34
EPCRA	This is a formula based planning grant to off-set expenses associated with implementing the Emergency Planning and Community Right to Know act (EPCRA) requirements.	\$36,933.00
HS UASI	The focus will be on developing and establishing a Recovery Action Team (RAT) in the eight WEM Southeast Region Counties and the City of Milwaukee as a continuation of the recovery planning and Recovery Support Funds (RSFs) project.	\$10,000
		\$144,742.34

EMERGENCY PLANNING

RCOEM works closely with emergency responders, community partners, and residents to engage in comprehensive disaster planning for the County of Racine.

RCOEM has developed and maintains more than 70 plans, annexes, appendices, and supporting documents that guide preparedness, response, recovery, and mitigation activities. Topics include Terrorism, Hazardous Materials, Mass Evacuation, Mass Care and Shelter, Medical and Health, Communications, and others.

RACINE COUNTY COOP/COG PLAN

County Executive Jonathan Delagrave appointed a planning workgroup to review Continuity of Operations/Continuity of Government (COOP/COG) guidance. This workgroup has been developing guidance that county departments will follow. Continuity planning ensures the execution of **essential functions** through all circumstances. This includes plans and procedures that delineate **essential functions**, specify **orders of succession** and **delegations of authority**, provide for the safekeeping of **essential records** and databases, provide for continuity communications, and validate these capabilities through test, training, and exercise (TT&E) programs. In the business world it would be referred to as Business Recovery or Continuity Planning. A kick-off will be scheduled in the January 2017.

RACINE COUNTY HAZARD MITIGATION PLAN

Work continues on the Racine County Hazard Mitigation Plan. A public information meeting was held on August 25th at the Ives Grove Office Complex. The plan update is scheduled to be completed in September 2017.

Plan	2016 Update
Racine County Comprehensive Emergency Management Plan and Emergency Support Functions.	• Updated the Racine County CEMP
Racine County Hazardous Materials Plan	• Updated the Racine County Hazardous Materials Plan
Off Site Plans	• 63 offsite facility plans were updated.
Racine County Emergency Response Plans	• Updated Racine County ERPs for all Racine County buildings
Mass Evacuation Plan	• Updated the mass evacuation plan guidance
Railroad Emergency Response Plan	• Reviewed the Railroad Emergency Response Plan

“Make a game plan and stick to it...unless it’s not working.” –Yogi Berra

TRAINING & EXERCISES

Training is an important component of preparedness. Throughout the year, RCOEM sponsors various training programs in Racine County. Many of these are grant funded, and target audiences may include both public safety agencies and the general public.

RCOEM hosted eight national training courses in 2016. They included RDPC's MGT416 Continuity of Government Operations Planning Course, along with TEEX's AWR213 Critical Infrastructure Key Resource (CIKR) Awareness, MGT310 Threat and Risk Assessment, MGT414 Advanced Critical Infrastructure Protection, MGT315 Critical Asset Risk Management, MGT452 Physical and Cybersecurity for Critical Infrastructure, MGT-318 Public Information In An All-Hazards Incident and PER213 Wide Area Search.

TEEX INFRASTRUCTURE PROTECTION CERTIFICATE

David Maack earned the TEEX Infrastructure Protection certificate. This certificate program combines a broad understanding of homeland security infrastructure protection doctrine with an in-depth examination of key concepts and practices in integrated risk management, private-public partnerships, capabilities-based and community-focused planning, and whole community resilience strategies. Participants must successfully complete all four DHS-certified courses (AWR213, MGT310, MGT315, MGT414).

AMBER CHILD ABDUCTION RESPONSE TEAM TRAINING (CART)

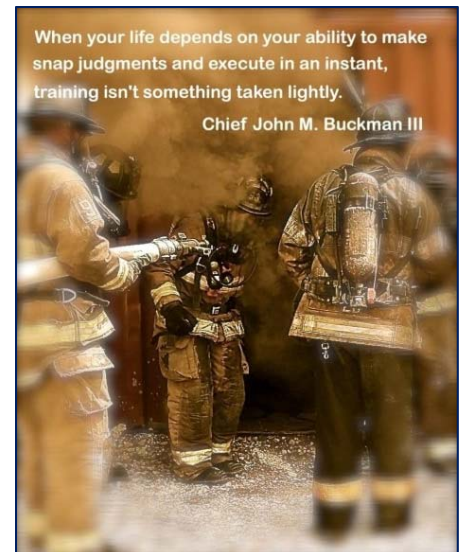
David Maack, along with a team from Racine County, attended CART training. The Child Abduction Response Team (CART) training is a multidisciplinary approach to responding to a missing or abducted child incident. Team composition is critical to a CART's implementation and long-term success.

ALICE TRAINING

RCOEM was invited to participate in ALICE training offered by the Waterford School District. ALICE (Alert, Lockdown, Inform, Counter, Evacuate) Training instructor led classes provide preparation and a plan for individuals and organizations on how to more proactively handle the threat of an aggressive intruder or active shooter event. Whether it is an attack by an individual person or by an international group of professionals intent on conveying a political message through violence, ALICE Training option based tactics have become the accepted response, versus the traditional "lockdown only" approach.

COMMUNITY SPECIFIC: INTEGRATED EMERGENCY MANAGEMENT COURSE

Racine County has been selected to attend the Community Specific Integrated Emergency Management Course (IEMC) at the Emergency Management Institute (EMI) in Emmitsburg, MD. Only a handful of communities are selected each year to participate in this training. The last time Racine County attended this course was in 1998.



EXERCISES and drills are great opportunities to test skills and plans under simulated conditions. Each year, Racine County Emergency Management participates in several exercises/drills.

READY WATERFORD 2016

Last year, an early morning storm hit Waterford’s annual Balloonfest. While balloon pilots scrambled to take down balloons, a strong gust carried a deflating balloon across the launch field, pulling the truck it was tethered to, into some vendor tents. A video of the incident went viral. As a result, Waterford Officials requested that Balloonfest organizers develop an emergency response plan and that Racine County Emergency Management assist in developing and facilitating a tabletop exercise for festival organizers, as well as local officials. The tabletop exercise was held at the Evergreen Elementary School in Waterford and the scenario centered on the impact extreme heat and severe weather might have on the event. There were 18 participants including both the police chief and the fire chief and the robust discussion focused on the coordination and collaboration taken by both public and private entities to manage and mitigate the situation.

FIRE DRILLS

RCOEM coordinated fire drills for various county buildings.

EXERCISE/DRILL:

- 01/20/16 Work Stoppage TTx (RCI)
- 01/21/16 Work Stoppage TTx (RYOCF)
- 04/14/16 Statewide Tornado Drill
- 06/14/16 BAT 16 Functional Exercise
- 06/28/16 Ready Waterford TTx
- 07/21/16 Active Shooter TTX (RYOCF)
- 09/07/16 Ives Grove Fire Drill
- 09/09/16 LEC Fire Drill
- 09/20/16 Active Shooter TTx (VA Clinic-Union Grove)
- 09/26/16 Western Racine County Service Center Fire Drill
- 09/29/16 Courthouse Fire Drill
- 10/26/16 Debris Removal TTx
- 11/03/16 LEC Fire Drill
- 11/29/16 DKRCSC Fire Drill
- 12/09/16 Active Shooter Functional Exercise (RYOCF)

“Scenario planning offers people and organizations a way to understand the nature of uncertainty, to discuss it and make sense of it, to reflect on goals, and then begin to explore what might happen.”

Leader to Leader editors

COMMUNITY ENGAGEMENT & PUBLIC OUTREACH

Racine County Emergency Management conducts comprehensive, robust public outreach campaigns throughout the year. Campaigns include winter, flood, tornado, severe thunderstorm and hazardous materials awareness; public outreach includes speaking, media interviews, a Ready Racine newsletter, email blasts and a website to name a few.

PROCLAMATIONS

County Executive Jonathan Delagrave joined with Governor Scott Walker in proclaiming the week of April 11-15, 2016 as Tornado and Severe Weather Awareness Week and September as National Preparedness Month.

PUBLICATIONS

David Maack continues to write a Community Newsletter column for *The Journal Times*. In addition, articles that he writes occasionally appear in other publications:

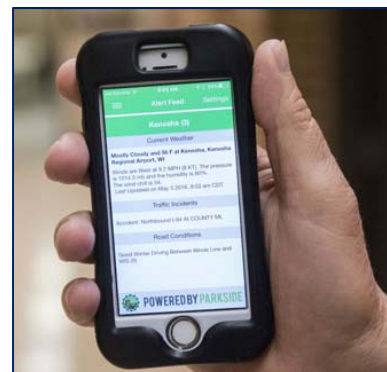
- Ready Racine Newsletter-January 2015
- Community Newsletter: We have much to be thankful for (Journal Times 01/04/16)
- Community Newsletter: Helping children cope after a disaster (Journal Times 02/29/16)
- Community Newsletter: Are severe thunderstorms all that dangerous? (Journal Times 05/05/16)
- Ready Racine Newsletter-July 2016
- Ready Racine Newsletter-September 2016
- Community Newsletter: Remembering 9-11 and being prepared (Journal Times 09/09/16)

STORM SPOTTER SEMINAR

RCOEM hosted the annual storm spotter seminar on April 5, 2016. Training was facilitated by National Weather Service Meteorologist Tim Halbach.

READY BADGER APP

Southeast WI Emergency Management Directors recently visited the UW Parkside APP Factory for a briefing on the new Ready Badger app. ReadyBadger is the latest app developed by UW-Parkside's Computer Science students, who worked in conjunction with Southeast Wisconsin County Emergency Management representatives. The app will allow anyone in the state of Wisconsin to find emergency preparedness information specific to a particular county. It also allows for the user to submit a digital damage report in an effort to increase the speed with which County emergency managers can assess damages and respond to disasters. The ReadyBadger mobile application can be downloaded for free in the Apple App Store and Android Google Play Store.



RCOEM WEBPAGE REDESIGNED

Racine County has launched a fresh new brand, which includes a stylish logo, new County colors, and an updated, user-friendly website www.racinecounty.com. The new logo for Racine County is in the new County colors, blue and gold, and has a distinct swoop of forward-leaning boxes. Racine County's new website – www.racinecounty.com – is up and available to the public. With a fresh look, vastly improved navigation, and new interactive tools, the website is mobile-friendly and contains content that is easy to access and understand. The Racine County Emergency Management webpage has also been redesigned. You can still go to readyracineco.com to access the new Emergency Management website.

CONFERENCE SPEAKER

David Maack spoke at the Humanitarian Disaster Institute's Disaster Ministry Conference at Wheaton College on Serving the Community in Times of Disaster and at the Wisconsin Personal Care Association (WPSA) Summer Conference on Emergency Preparedness.

OPERATION NORTH POLE

For the second year in a row, Santa Claus made a special visit to Racine County to brief Racine County officials on his travel plans through the county on Christmas Eve. Greeted by County Executive Jonathan Delagrave, Emergency Management Coordinator David Maack, Sheriff's Captain Tom Lamke and Communications Center Director Jackie Bratz, RCOEM used Santa's visit in a public awareness to remind Racine County residents to slow down and enjoy the holiday season with family and friends and to offer other safety tips to help keep resident's safe during the festivities.



SPILLS/INCIDENTS

MILD STORM SEASON

Snow and cold were common during the first part of the new year but the remainder of the year was relatively mild. The first Tornado Warning of the season was issued on April 9, 2015 when tornadic storms pushed up into Wisconsin from Illinois. Fortunately, there were no confirmed tornadoes in Racine County. An unstable weather pattern resulted in Severe Thunderstorm and Tornado warnings on July 18, 2015. Although there was no tornado activity, strong winds did do minor damage throughout parts of Racine County.

LAKE BLUFF EROSION

Portions of Racine County, along the shores of Lake Michigan were hit hard with bluff erosion

issues. Lake bank erosion is caused by a variety of natural factors including high lake levels and winds that cause waves to damage the shoreline. One house in Mt. Pleasant has already had to be removed and some residents have lost 50 feet or more of bluff. Racine County Executive Jonathan Delagrave issued a declaration of emergency in Racine County due to the severe bluff erosion in the Villages of Caledonia and Mount Pleasant. Although



the shoreline of Lake Michigan is not under the jurisdiction of Racine County, the declaration is one way to support the municipalities in raising awareness and finding an expeditious solution. On June 7th, Wisconsin Emergency Management facilitated a Lake Bluff Erosion Technical Assistance Community Meeting in Mount Pleasant. Over a 100 people from Racine, Kenosha and Ozaukee counties attended and subject matter experts were on hand to answer questions for affected homeowners. Gov. Scott Walker has requested federal assistance for the Village of Mount Pleasant to control severe bluff erosion along the Lake Michigan shoreline. Walker requested that the U.S. Army Corps of Engineers, “to identify this project as a priority for funding.” Not only are homes in danger but village roads and utilities, are also in immediate danger of succumbing to bluff failure.

METEOROLOGICAL WINTER

Back to back snow storms, coupled with frigid temperatures, ushered in the “meteorological winter.” Meteorological winter is defined as the three coldest months throughout the winter, or December 1st through March 1st. A slow-moving snow storm on December 10th dumped 8.3” of snow, while another snow storm on December 17th & 18th dumped 8”.

Racine County Severe Weather History

Year	Severe Thunderstorm		Tornado	
	Watch	Warning	Watch	Warning
2000	8	14	3	1
2001	10	7	1	1
2002	7	6	1	0
2003	4	6	3	0
2004	15	16	2	0
2005	11	5	5	3
2006	19	19	3	0
2007	2	11	3	0
2008	9	19	5	4
2009	7	8	1	2
2010	6	7	7	7
2011	8	17	2	0
2012	2	10	0	0
2013	5	8	2	4
2014	8	11	1	1
2015	5	15	2	2
2016	7	8	0	0
Total	133	187	41	25

“It can be 100 degrees in the shade one afternoon and suddenly there comes a storm with hailstones as big as golf balls, the prairie is all white and your teeth chatter. That’s good – a reminder that you are just a small particle of nature, not so powerful as you think.” –Lame Deer, Lakota

