

RACINE COUNTY SHERIFF'S OFFICE

A TRADITION SINCE 1836



2015 ANNUAL REPORT

Table of Contents

Message from the Sheriff	3
2015 Organizational Chart	4
Mission Statement	5
2015 Sheriff's Office Accomplishments	6
2015 Sheriff's Administration	7
Racine County Sheriff's Office Operations Division	9
I-94 Corridor C.O.P.S.	13
STEU C.O.P.S	15
Criminal Investigations Bureau	16
Evidence Custodian	17
Metro Drug Unit	18
Water Safety Patrol	20
Recreational Patrol	21
K-9 Unit	22
Dive Rescue Team	23
SWAT Team	25
Crisis Negotiation Team	26
Crisis Intervention Team	27
Honor Guard	28
Deputy Friendly	29
Support Services	30
Courts, Conveyances and Security	32
Planning and Training	33
Records Bureau	34
Racine County Sheriff's Office Jail Division	35
Jail Chaplaincy and Inmate Programs	37
Jail Revenues	39
Jail Population	40
Racine County Sheriff's Office CERT Team	42
Financial Summary	43
Promotions, Retirements & Active Military Personnel	44
Sheriff's Awards	45
Acknowledgments	46

Sheriff Christopher Schmaling's Message

Greetings:

The Racine County Sheriff's Office is the chief law enforcement agency in Racine County. Our agency has full law enforcement authority throughout the county, including all the towns, villages, and cities, as well as the waters of Lake Michigan. We provide the following specialized functions:

- Metro Drug Unit
- Civil Process Unit
- Consumer Fraud Investigation
- Criminal Investigations Bureau
- Water Patrol
- SWAT Team
- Dive/Rescue Team
- Crisis Negotiators

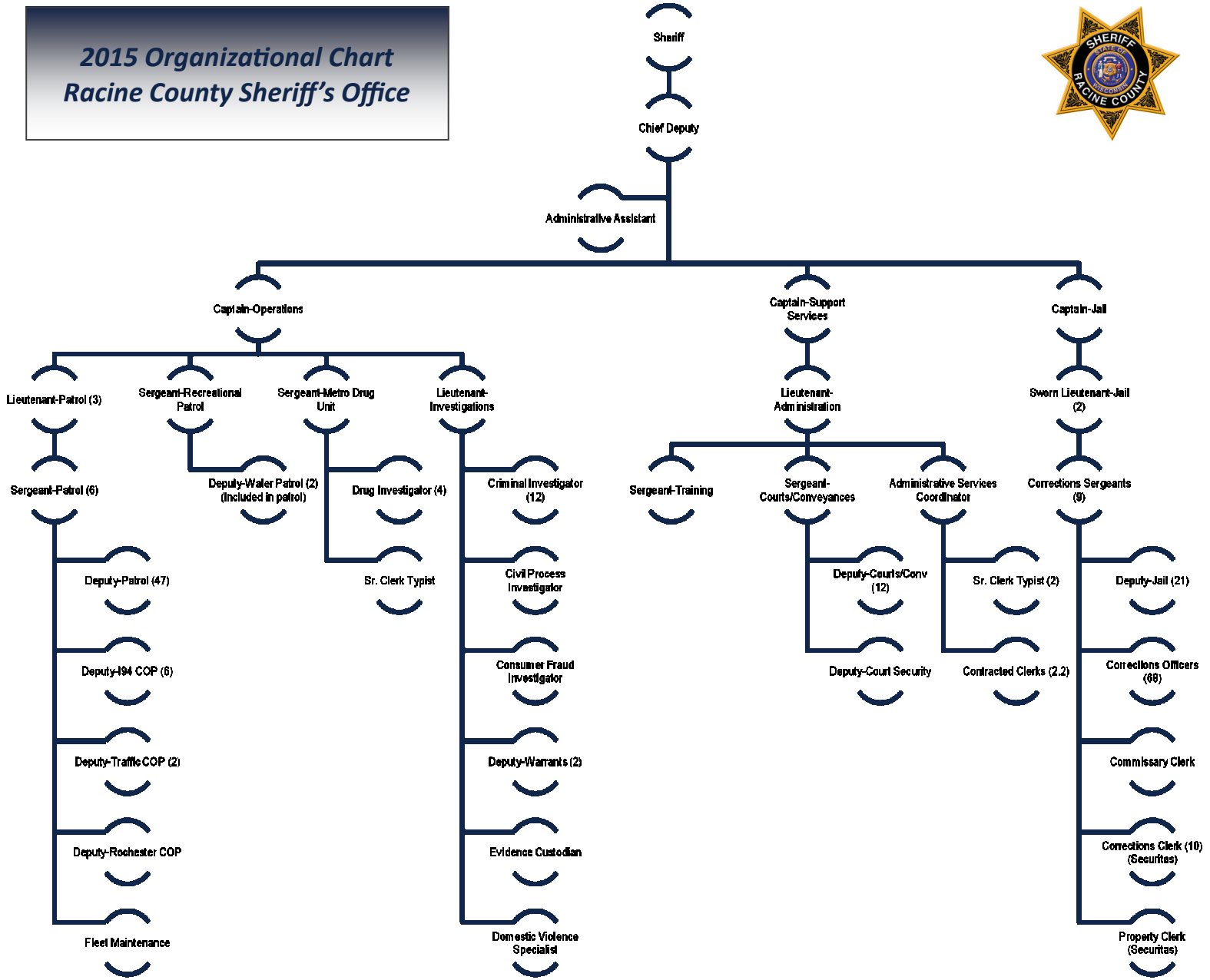
The Sheriff's Office is also responsible for the operation of the Racine County Jail. The jail's rated capacity of 876 persons makes it one of the largest in the state.

The professional staff of our agency remains dedicated to our mission of providing the core services that help maintain public safety, peace, and order in Racine County. We also remain committed to utilizing our resources in the most efficient and responsible manner possible. Our citizens expect these things, and deserve them. It is our great privilege to deliver these services to them.

Sincerely,
Christopher Schmaling, Sheriff
Racine County, Wisconsin



**2015 Organizational Chart
Racine County Sheriff's Office**



Racine County Sheriff's Office Mission Statement

In Partnership with the Citizens, and with the cooperation of the communities within Racine County, the mission of the Racine County Sheriff's Office shall be the preservation of public safety, peace and order. This goal shall be met through proper utilization of the available resources in the most efficient manner possible while maintaining the highest levels of professionalism.



RACINE COUNTY SHERIFF'S OFFICE 2015 ACCOMPLISHMENTS

Violent Crime
64% increase from
2014

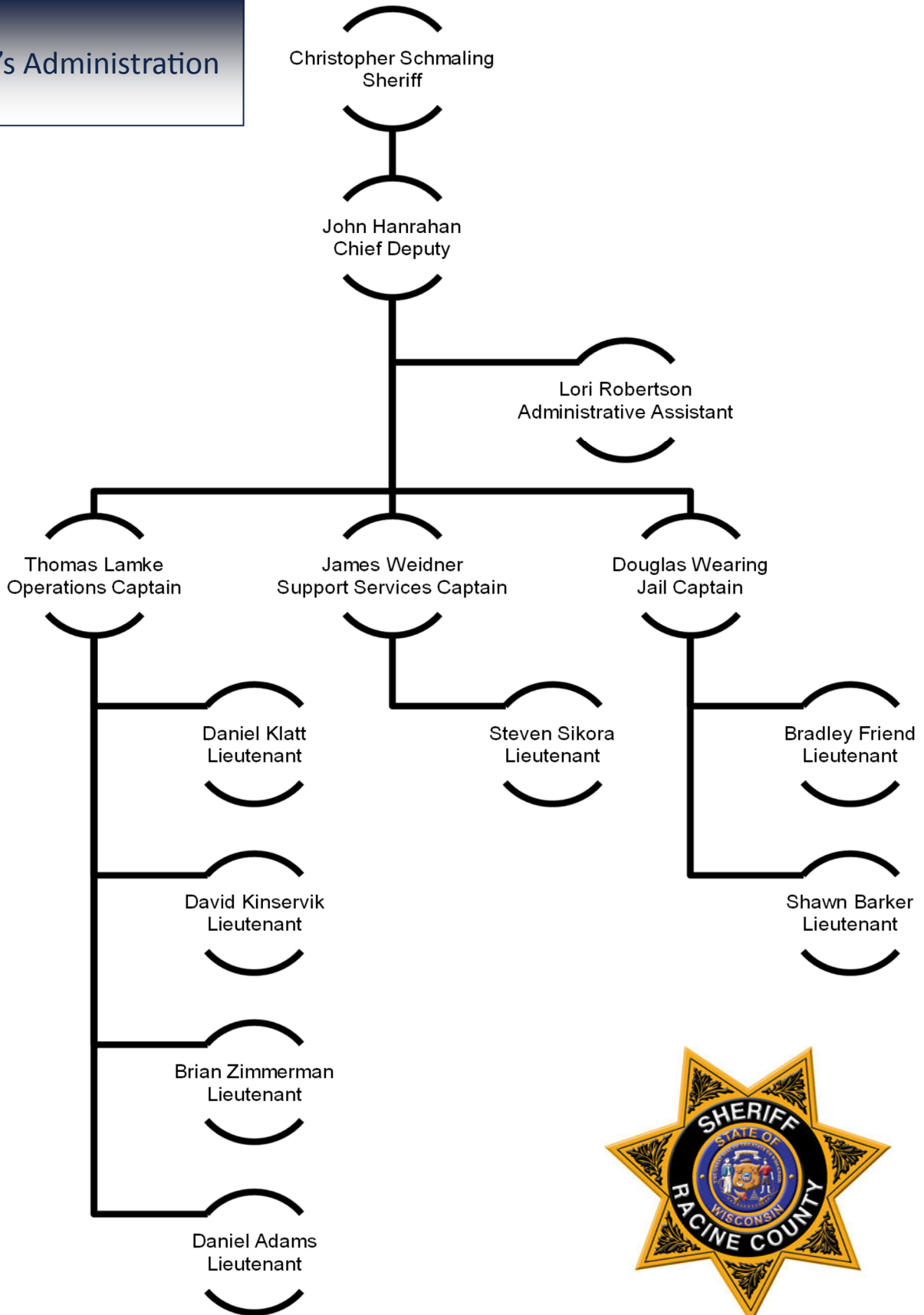
Property Crime
5% decrease from 2014

The Sheriff's Office accepted \$378,257 in grant funding in 2015 for the following programs:

- Alcohol enforcement \$26,710
- Seatbelt Enforcement \$15,600
- Justice Assistance Program Grant (Court Security) \$22,058
- HIDTA Award \$42,912
- Domestic Violence RO Enforcement Task Force \$72,388
- Alcohol Grant (With KESO) \$27,091
- Alcohol Grant (with MPPD) \$10,581
- FBI Task Force \$30,455
- I-94 Traffic Grant \$130,462

Uniform Crime Reporting Statistics					
	Offenses			Clearances	
Violent Crime	2014	2015	%	2014	2015
Murder	0	0	—	—	—
Forcible Rape	1	5	400%	100%	100%
Robbery	1	3	200%	100%	67%
Aggravated Assault	12	15	25%	100%	100%
Total	14	23	64%		
Property Crime					
Burglary	56	80	42.9%	14%	23%
Larceny Theft	295	248	-15.9%	25%	24%
Motor Vehicle Theft	13	18	38.5%	—	11%
Arson	3	1	-66.6%	0%	100%
Total	367	347	-5%		
* Although an increase may have occurred, it is not possible to calculate the percentage change due to a zero amount in the previous year.					

Sheriff's Administration



2015 Sheriff's Administration

The Sheriff's Administration is responsible for the management and direction of the entire Office, and ensures that the Office obtains its goals and objectives.

The Sheriff's Office is a large, dynamic organization with ever-growing responsibilities. The Office is composed of many specialized units.

The Office's Administrative Staff provides support services to all operating units within the Office. Support and administrative services include; creating policy and procedure, handling citizen's complaints, accounting, records, training, communications and clerical support.



Operations Captain Thomas Lamke



Support Services Captain James Weidner



Chief Deputy John Hanrahan



Jail Captain Doug Wearing

Racine County Sheriff's Office Operations Division

The Operations Division of the Sheriff's Office consists of Patrol, Investigations and Metro Drug, along with other specialized units. They provide public safety services throughout Racine County.

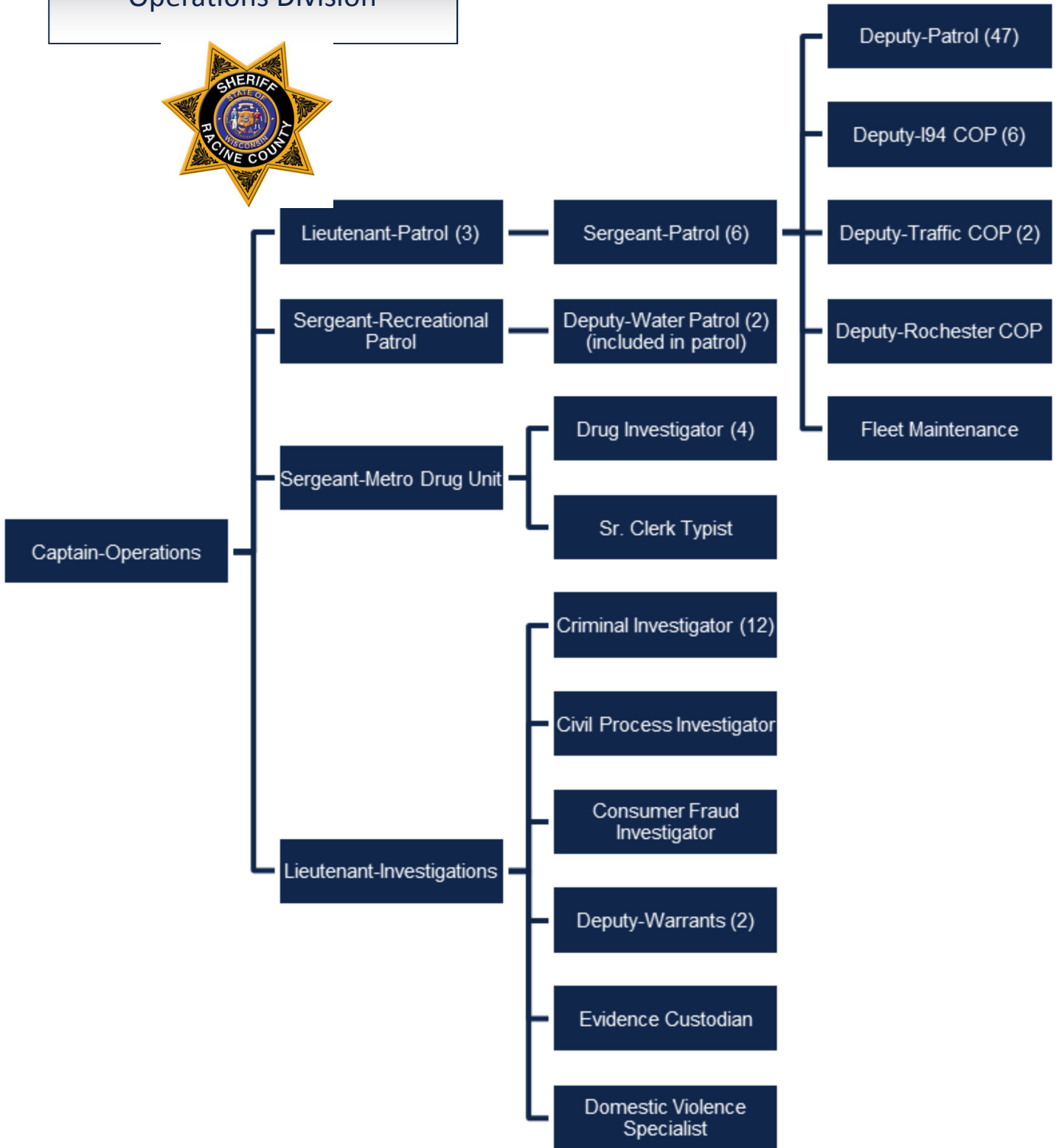
The uniformed patrol operations of the Racine County Sheriff's Office strives to improve the quality of life in Racine County by providing a high level of public service and keeping communities safe through enforcement, prevention, education, and community policing efforts in partnership with communities, other governmental entities, and schools.

The primary mission of the Investigative Bureau is to investigate time-consuming, complex or specialized crimes that are not practical for patrol deputies to investigate. The main goal of the Racine County Metro Drug Unit is to target drug distribution and production. The Drug Unit has secondary roles such as gathering, processing, and disseminating drug intelligence, coordinating drug enforcement with other local, state and federal agencies, and has a role in educating the community about current drug threats.

The Operations Division is commanded by Captain Thomas Lamke.



Racine County Sheriff's Office
Operations Division



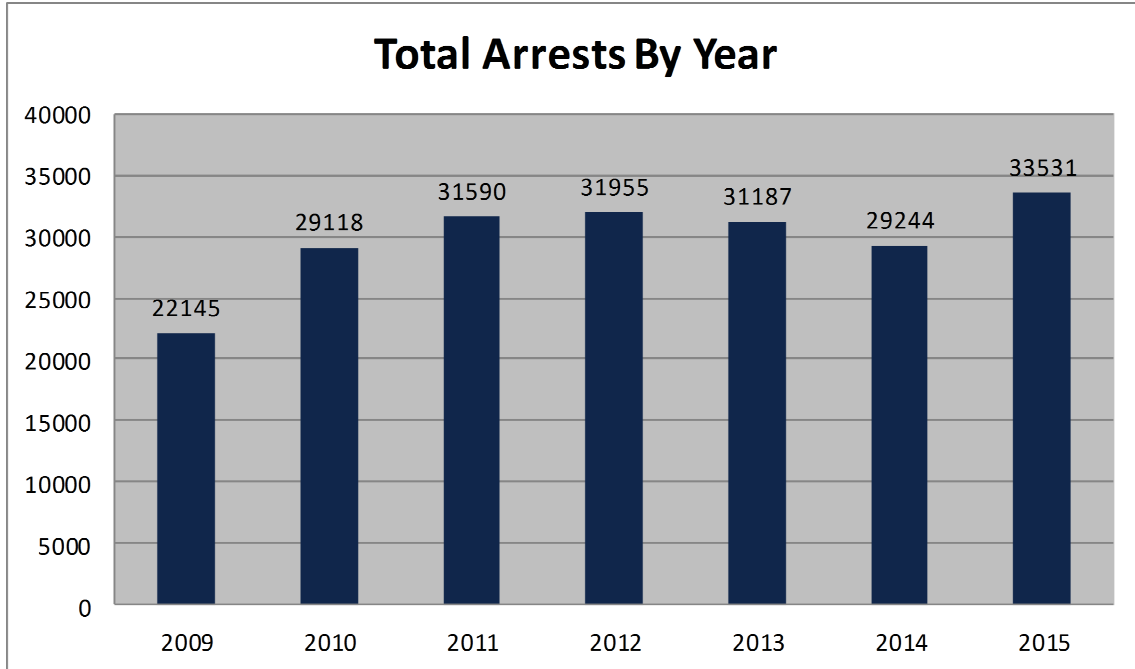
Racine County Sheriff Patrol Operations Statistics							
	2009	2010	2011	2012	2013	2014	2015
Total Miles Driven:	653,420	728,340	821,730	1,184,677	888,274	969,601	1,505,943
Total Hours Worked:	67,750	79,096	85,534	88,067	80,541	76,268	83,183

Complaint Activity							
	2009	2010	2011	2012	2013	2014	2015
Complaints Assigned:	13,704	14,683	14,410	15,256	14,917	15,079	15,941
Deputy Originated:	6,974	7,592	10,540	22,007	24,332	25,501	27,120
Complaint Follow Up	13,719	14,948	16,882	14,360	11,568	11,267	12,077
Complaints Assisted	3,943	4,966	5,369	6,029	5,093	4,408	5,328
Total Complaints	38,340	42,189	47,201	57,652	55,910	56,343	60,469

Other Enforcement							
	2009	2010	2011	2012	2013	2014	2015
Warnings	3,868	4,455	5,468	7,786	9,074	6,332	7,549
Arrest Warrants	1,047	718	932	736	715	588	618



2015 Arrests Statistics



Patrol Arrest Activity							
	2009	2010	2011	2012	2013	2014	2015
Speeding Citations	7,746	11,310	9,914	8,183	9,709	10,178	11,953
Other Traffic Violations	7,653	9,677	11,650	12,250	12,252	7,087	8,521
OWI	302	298	313	335	331	371	450
Citations from Crashes	403	429	466	381	414	427	468
Parking	1,417	1,268	1,048	1,146	1,236	999	1,028
Felonies	123	163	124	155	183	170	171
Misdemeanor Arrests	662	625	708	1,042	945	504	604
Ordinance Arrests	799	732	638	677	659	590	683
TOTAL PATROL ARRESTS	21,114	26,512	26,872	26,181	25,729	20,326	23,878

2015 I-94 Corridor C.O.P.S.

The Racine County Sheriff's Office has created the I-94 Corridor Patrol. Officers aggressively patrol the Interstate as well as property locations within one mile of I-94 in efforts to make the roadways and businesses in Racine County a safer place to operate motor vehicles and conduct commercial operations. The program is in its fourteenth year of operation, and has made a significant impact on safety in Racine County.

2015 I-94 Corridor C.O.P.S. Activity	
Base Fine	\$604,222.00
Citation Fine	\$1,835,484.80
Speeding Citations	5,993
Miscellaneous Other Arrests / Citations	
OWI Arrests	10
Driver's license violations	537
Registration violations	66
Restraint violations	14
Insurance Violations	63
Weapons Violations	9
Felony Arrests	50
Misdemeanor Arrests	114
Forfeitures	2,440
Property Damage Accidents	25
Personal Injury Accidents	5

Service of Warrants	157
Drug Arrests	77

Drugs seized 2015 (I-94 Corridor)	
THC	187 grams
Cocaine	3.30 grams
Heroin	3.20 grams
Schedule II, IV, V Drugs	129 tabs
Schedule III Drugs	0 milligrams
Pills (non-schedule)	0 tabs

2002-2015 I-94 Corridor Activity Summary	
Speed violations	77,052
OWI	725
Driver's license violations (2003-2014)	13,645
Registration violations (2003-2014)	12,709
Restraint violations (2003-2014)	4,751
Weapons violations	229
Warrants/Commitments	4,185
<p>*Other arrests/citations include: Following too closely, Unreasonable & imprudent speed, Unsafe lane deviation, Fail to signal, Too fast for conditions, Equipment violations, Failure to obey sign or signal, Improper plates, Overweight, Operating left of center, Reckless driving, Racing, Window tint.</p>	

2002-2015 Drugs seized (I-94 Corridor)	
THC	47,287.49 grams or 104.25 pounds
Cocaine	27,369.9 grams or 60.34 pounds
Heroin	391.1 grams or .862 pounds
Other drugs	463.1 grams or 1.20 pounds of Ecstasy, 1,215 tabs/pills of various controlled pills/ schedule II, schedule IV, V 46.2 grams Psilocybin

2002-2015 Cash seized	\$549,886
------------------------------	------------------

2002-2015 citations/arrests:	135,724
-------------------------------------	----------------

STEU C.O.P.S.

In 2010, two new C.O.P. positions were created to function as a specialized traffic enforcement unit with a concentration on state and county highway traffic enforcement.

2015 STEU Statistics	
Base Fine	\$265,985.00
Citation Fine	\$821,067.80
Warrant Bond	\$18,367.15
Total Traffic Citations	3,411
Weapons Violations	2
Felony Arrests	26
Misdemeanor Arrests	31
Forfeitures	54
Property Damage Accidents	14
Personal Injury Accidents	4
Total THC Weight	246 grams
Total Cocaine Weight	2 grams
Total Heroin Weight	1 gram
Total Cash Seized	\$184.00



Racine County Sheriff's Office Investigative Bureau

The Racine County Sheriff's Office Investigative Bureau is comprised of 1 Lieutenant and 15 Investigators. One Investigator is assigned to Civil Process and one is assigned to Consumer Fraud Investigations.

The Investigative Bureau has a number of specialized units staffed by highly trained and skilled Investigators.

- Sexual Assault
- Child Abuse
- Burglary & Theft
- Arson Investigations
- White Collar & Financial Crimes
- Internet Crimes
- Traffic Investigations
- Consumer Fraud
- Death Investigation
- Street Gangs



2015 Criminal Investigation Activity Summary		
Classification	Total calls for Service	Calls investigated by Bureau
Thefts	446	49
Burglaries	100	39
Sex Offenses	71	52
Physical Assaults	101	16
Fraud	280	37
Robberies	5	2



Racine County Sheriff's Office Evidence Custodian

The Racine County Sheriff's Office Evidence Custodian is a position held by a Sworn Deputy responsible for the proper collection, identification, and preservation of evidence collected by Deputies and Investigators.

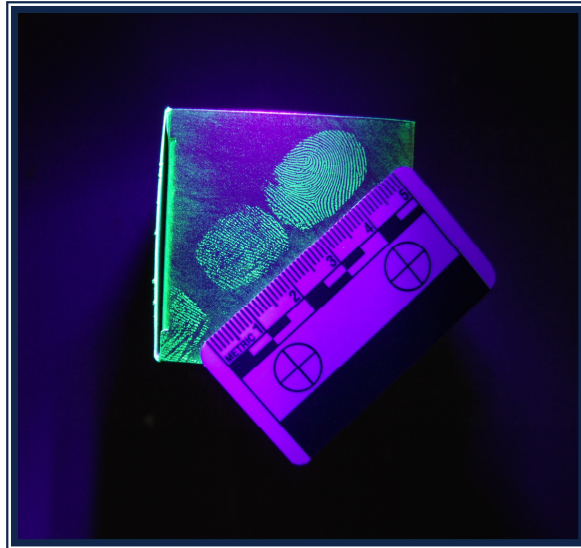
In 2015,
3,964 items of
evidence were
inventoried

The Evidence Custodian maintains the 'chain of custody' of evidence that may be sent to the Crime Lab for analysis.

Collection and processing of evidence is a constantly changing field that demands the Office be current in the latest technological procedures. Our Evidence Custodian and Investigators are highly involved in learning new processes and proper techniques for evidence collection.

In 2015, 390 items were returned to the rightful owner or disposed of, 36 vehicles were processed, and 520 items were taken to the Crime Lab for analysis.

In addition to evidence of criminal activities, 167 blood samples of potential OWI situations were processed through the always-busy Evidence Section and the Wisconsin State Hygiene Lab/Crime Lab.



Racine County Sheriff's Office Metro Drug Unit

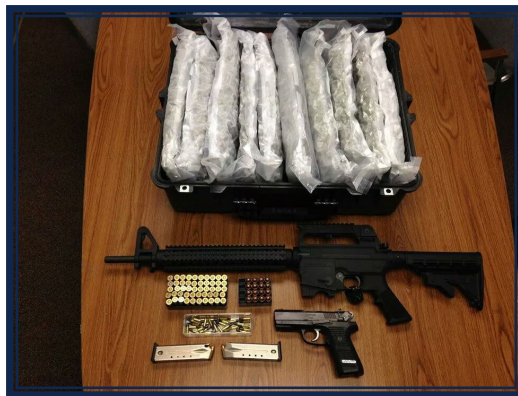
Four Investigators, one supervising Sergeant, and a part time Secretary currently staff the Racine County Metro Drug Unit. All members of the METRO Drug Unit are Sheriff's Office personnel.

The Metro Drug Unit executed 84 search warrants during 2015

The Unit was created to provide a coordinated and comprehensive effort to investigate and arrest those who engage in the trafficking of illegal drugs within Racine County. The Unit works closely with the FBI, IRS, DEA and the Federal Prosecutors Office, as well as other State and local law enforcement agencies such as SEADOG, a 5-county information and intelligence sharing cooperative.

During 2015, there were 1,111 arrests made for various drug charges in Racine County. Of those arrested, 80 were juveniles. There were 663 Felony charges, 300 Misdemeanors, and 68 Ordinance violations.

2015 Metro Drug Activity - Seizures		
Substance	Quantity	Street Value in US Dollars
<u>Aderrall</u>	271 tablets	1,355.00
<u>Alprazolam</u>	525 tablets	2,625.00
Cocaine	3,135.4 grams	313,540.00
Crack Cocaine	560.3 grams	39,221.00
Heroin	454.6 grams	90,920.00
<u>Hydrocodone</u>	500 tablets	2,500.00
Marijuana – THC	33,734.3 grams	337,343.00
Marijuana Plants	156	156,000.00
<u>Oxycodone</u>	977 tablets	29,310.00
<u>Misc Tablets</u>	2,993 tablets	14,965.00
<u>Total</u>		\$987,779.00



Metro Drug Unit Statistics

Metro Drug Unit							
Felony Charges	2009	2010	2011	2012	2013	2014	2015
	366	373	454	457	545	614	663

Metro Drug Unit							
Search Warrants	2009	2010	2011	2012	2013	2014	2015
	39	75	87	88	83	86	84



Racine County Sheriff's Office Water Safety Patrol

The Racine County Sheriff's Office continues to operate the Water Safety Patrol on Lake Michigan and on inland lakes and rivers throughout Racine County. The Water Safety Patrol operates from April 1st until about the second week of November. During the summer months, Water Safety Patrol Deputies are assisted by approximately 5 college student summer employees.



The Water Safety Patrol continues to be partially funded by the Department of Natural Resources. Annually, up to 17% of the costs of operating the Water Safety Patrol are reimbursed to Racine County.

The Racine County Sheriff's Water Safety Patrol responds to assist boaters for a variety of incidents, including accidents, engine failures, and rescue as well as enforcement activities.

Water Safety Patrol Calls for Service 2015	
Boat Accidents	1
Search & Rescue	6
Hazard to Navigation	29
Boating Citations Issued	27
Boating Warnings Issued	33
Vessels Assisted	41
Boat Inspections (Compliance/Safety)	46
TOTAL CALLS FOR SERVICE	228
TOTAL PERSONS ASSISTED	107

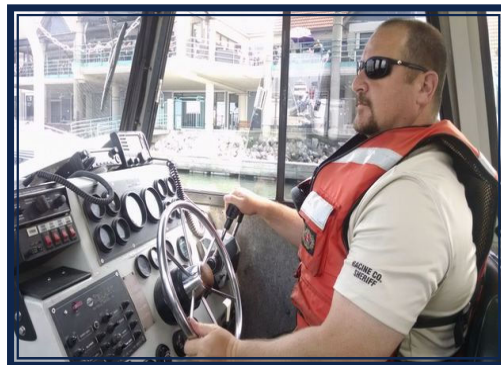


Photo courtesy of Racine Journal Times



Racine County Sheriff's Office Recreational Patrol



The Racine County Sheriff's Office Recreational Patrol is responsible for overseeing snowmobile safety and ATV safety, along with investigating accidents and complaints related to these recreational activities.

The Racine County Sheriff's Office Snowmobile Patrol is supported by the Racine County Snowmobile Alliance and the Department of Natural Resources. Our office submits a year-end report to the Department of Natural Resources after each snowmobile season, and we are reimbursed for a portion of the cost to operate the snowmobile patrol.

Our Motorcycle Patrol unit is made up of sworn officers who must successfully complete an intensive training class before operating the motorcycle in an enforcement capacity. The Sheriff's Office currently has two Harley Davidson police motorcycles. The motorcycle unit performs traffic enforcement throughout the county and has assisted with escorting dignitaries and parades.



Racine County Sheriff's Office K9 Unit

In 1999, the Racine County Sheriff's Office began its first Canine Unit. With the generous support of many businesses and citizens, the program was launched.

The Canine Unit is currently comprised of 4 K9's and their handlers, thanks to the overwhelming support of the community and several local businesses. In 2012, K9 Friday was placed into service. Friday is a Belgian Malinois/German Shepherd mix. Friday is also a dual purpose K9, trained in narcotics detection, tracking, building and area searches, and articles and evidence searches. Friday is partnered with Deputy Edward Drewitz.

In 2013, additional donations were received, and the Sheriff's Office was able to add two K9's to the K9 unit. K9 Nitro and K9 Murphy were placed into service in November 2013. Both are Belgian Malinois's, and both are dual purpose K9's, trained in narcotics detection, tracking, building and area searches, and articles and evidence searches. Nitro is partnered with Deputy Troy Ruffalo and Murphy is partnered with Deputy David Fisher.

The newest member to our Canine Unit is K9 Nox, a German Shepherd trained in narcotics detection, tracking, building and area searches, and articles and evidence searches. Nox is partnered with Deputy Kurt Clemens. Nox was placed into service in May 2014.



Deputy Drewitz and K9 Friday



Deputy Ruffalo and K9 Nitro



Deputy Fisher and K9 Murphy



Deputy Clemens and K9 Nox

Racine County Sheriff's Office Dive Rescue Team

The Racine County Sheriff's Office Dive Rescue Team is a member of the Racine County Dive Team (RCDT) which operates under the Mutual Aid Box Alarm System Agreement ("MABAS") Division 102 under the authority and oversight of the Sheriff. RCDT members are comprised of public safety agencies within Racine County including Sheriff's Deputies and Corrections Officers, Fire, Rescue and EMS personnel. RCDT members include rescue/recovery divers, surface rescuers and shore/boat support personnel. At the present time, the RCDT has approximately 60 members.



The primary function of the RCDT is to make every reasonable attempt to save any person that may be drowning or has disappeared under the surface of any body of water within Racine County.

Additionally, the RCDT will make every reasonable effort to recover the body of any person that has been declared a drowning victim in any body of water within Racine County. The team also responds for evidence recovery operations and provides safety for water related events throughout Racine County.

Because the RCDT is comprised of multiple agencies with numerous specialized assets and personnel, it is considered a regional response team and has assisted other agencies of Southeastern Wisconsin and Illinois with their waterborne operations.

RCDT member agencies schedule intensive practical trainings each month and open their respective trainings to other member agencies. All active divers must have a minimum of an advanced certification through a professionally accredited SCUBA certification agency.

The RCDT has also obtained specialized equipment to make underwater searches safer and faster. This includes an underwater towable video system, diver to diver underwater communications, surface supplied air system, and a diver to surface video system. Rescue boats are staged east and west of I-94 for rapid deployment to any body of water in Racine County.

Many RCDT members have taken continuing education courses and are certified in such specialties as: Advanced Open Water, Rescue Diver 1 & 2, Medical Dive Specialist, Ice Diver, Wreck Diver, Night Diver, Computer Diver, Deep Diver, Cave Diver, Equipment Repair Specialist, Swift Water Rescue, Underwater Investigator, Underwater Death Investigator, Nitrox Diver, Staged Decompression Diver, Advanced Tri-Mix Diver, Advanced Gas Blender, Dive Master, and Dive Instructor.

**The Racine County
Sheriff's Office Dive
Rescue Team
completed 1,080 Hours
of Proficiency Training
in 2015**

Racine County Sheriff's Office Dive Rescue Team

Dive Team – 2015 Calls for Service	
Rescues	2
Evidence Recovery	1
Assisting Other Jurisdictions	3
Water Safety Events	1
Public Relations Events	6
Additional Training Events	3
Obstruction Removal	4



Racine County Sheriff's Office SWAT Team

The Racine County Sheriff's Office SWAT Team is comprised of deputies, investigators and supervisors from all areas of the Sheriff's Office.

Team members train regularly to assist Racine County Law Enforcement agencies with serving high risk warrants, fugitive apprehensions, resolving barricaded subject and hostage situations, and addressing other high risk law enforcement operations as needed.



Regular hands on and classroom training combined keeps team members skills at the level needed to operate in these high risk environments.



Racine County Sheriff's Office Crisis Negotiation Team (CNT)

The Racine County Sheriff's Office Crisis Negotiation Team (CNT), consists of 12 sworn members of the Sheriff's Office. The CNT responds to calls from the Patrol Division for assistance with barricaded subjects, hostage situations, domestic abuse calls, and other calls requiring specialized training in resolving dangerous situations safely and peacefully through verbal skills.

All the CNT members have received continuous training through the FBI, State of Wisconsin Crisis Negotiators Association, Wisconsin DCI, and Wisconsin D.O.C. The CNT also trains locally throughout the year using scenario training with other teams, and with the Racine County Sheriff's Office SWAT Team.



Racine County Crisis Intervention Team

Racine County started the current C.I.T. program in the April 2009 through the assistance of then County Executive McReynolds and the local branch of NAMI (National Alliance of Mental Illness) who saw a need to train local members of the Law Enforcement Community who were responding to calls for service involving those suffering from a mental disorder or in crisis.

Since the program's inception in Racine County, we have had 13 classes graduate, consisting of officers from every Law Enforcement Agency throughout Racine County; approximately 270 Officers have completed the 40 hour course, and 76 Officers have completed the CIT Advanced course.

Officers attending this course of study learn from local experts in the field of mental health and from consumers themselves on ways of better handling their crisis at the time of the call. In short, the CIT works to find better, safer ways to handle these calls.



The Racine County C.I.T. program, partnered with C.I.P. (Crisis Intervention Partner), conducts two 16-hour classes a year geared towards dispatchers, nurses, fire personnel, corrections, HSD and others dealing with people suffering from a mental disorder or in crisis, with approximately 519 trained as of March 31, 2016.

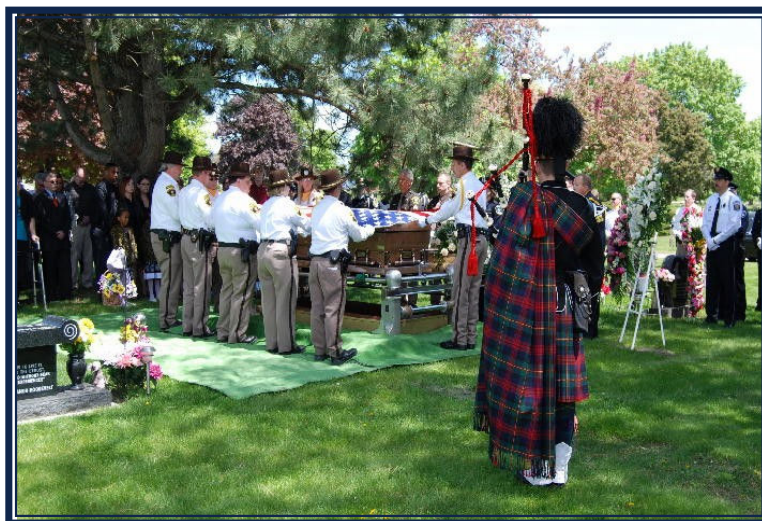
Racine County Sheriff's Office Honor Guard

The Racine County Sheriff's Office Honor Guard consists of 12 sworn members of the Racine County Sheriff's Office. The Honor Guard is called out for funerals for past and present members of the Racine County Sheriff's Office. The Honor Guard serves at these funerals as a show of respect and honor for the deceased Deputy's service as a Law Enforcement Officer to the county and the Racine County Sheriff's Office.



Using special Honor Guard uniforms and equipment, the Honor Guard performs a casket watch during the visitation, performs pall-bearer duties, sets up the squad procession to the burial site, folds and presents the flag to the family, and arranges the rifle salute, bugler, and bagpiper.

The Honor Guard also attends line-of-duty funerals for deceased officers from other law enforcement agencies throughout the State of Wisconsin and adjoining states as a show of respect for the fallen officer, their families and their law enforcement agency.



Racine County Sheriff's Office Deputy Friendly Program

The Deputy Friendly program has been very successful for many years. Every year, Deputy Friendly, Deputy Tim Graves, reaches out to thousands of children attending schools located throughout Racine County.

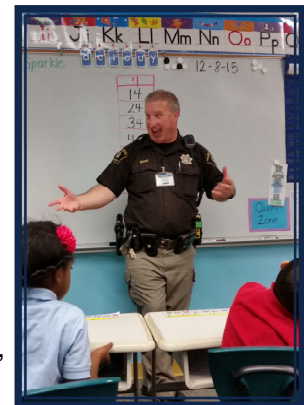
Deputy Friendly's objectives are:

- To provide students with the opportunity to develop an intelligent understanding of his or her rights, responsibilities and obligations as a junior citizen
- To establish a link between students of our communities and uniformed Law Enforcement Officers
- To develop a respectful image of the Sheriff's Office in the minds of students
- To provide a role model that is looked up to with respect



During 2015, Deputy Friendly was involved in the following:

- Visiting preschools and day care centers
- Managing the annual Deputy Friendly Awards Contest
- Bicycle Rodeos
- Safety Town USA Instructor
- Child Passenger Safety Technician
- Tobacco Abatement Program
- Alcohol Awareness Program
- Visit elementary schools in Racine County, educating kindergarten through second grade students on a variety of topics: the job of a police officer, gun safety, stranger awareness, bicycle safety, pedestrian safety and passenger safety
- Visit children in local hospitals and shelters with the Easter Bunny – provide Easter baskets



Racine County Sheriff's Office Support Services Division

The Support Services Division is led by Captain James Weidner. This division is responsible for managing Courthouse and Law Enforcement Center security. The main objective is to provide a safe and secure environment for all men and women who frequent our court facilities.

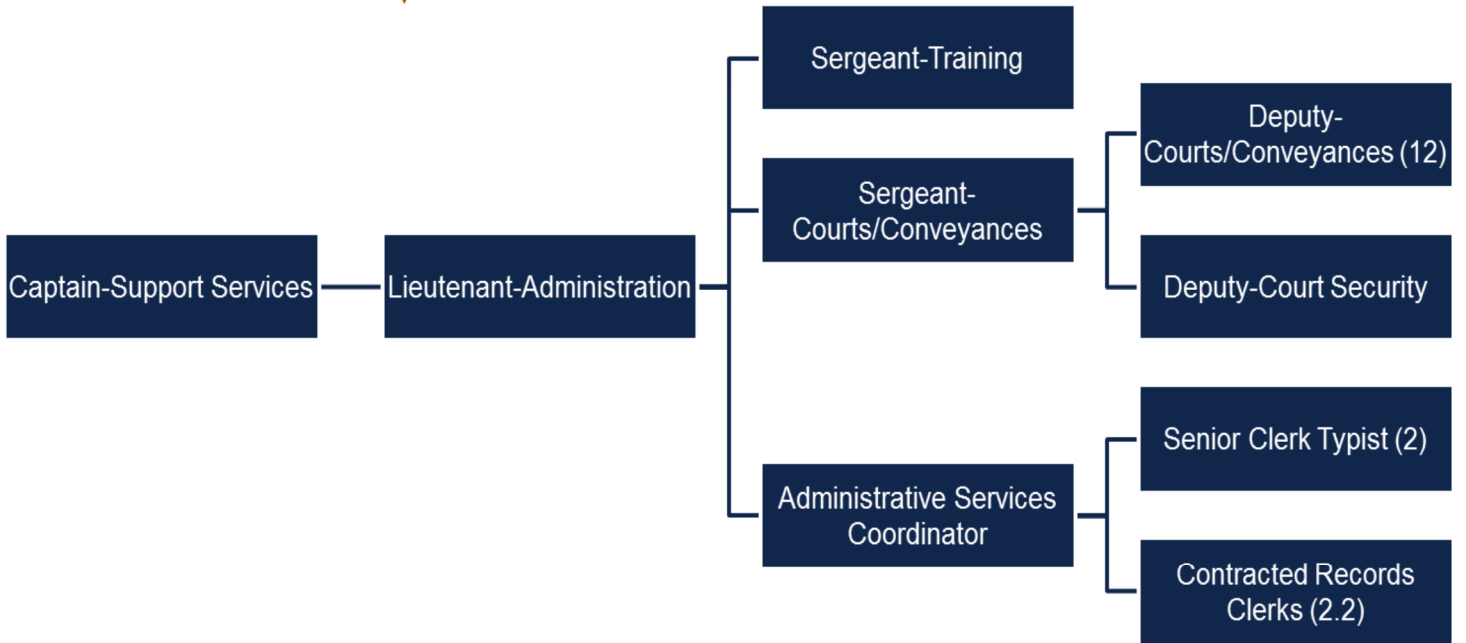
The Records Bureau is also part of the Support Services Division. Records Bureau staff is responsible for the maintenance and storage of all paper and electronic records associated with incidents, investigations, arrests, traffic accidents and inmate records. Records Bureau staff also prepares and processes incoming court documents for Civil Process, Evictions and Sheriff's Foreclosure Sales.

The Planning and Training Office organizes and schedules all trainings for correctional officers, sworn law enforcement officers and civilian staff of the Sheriff's Office in accordance with the Law Enforcement Standards Bureau, an office overseen by the Wisconsin Department of Justice. It is the responsibility of the Training Sergeant to make sure all mandated training requirements are met and recorded through the State of Wisconsin.

In addition, the Support Services Division oversees the department's Records Management system as well as the other electronic data systems. The Racine County Sheriff's Office Support Services Division is one of its "behind the scenes" commands that provide a variety of services to all members of our agency, the public and other law enforcement and criminal justice agencies.



Racine County Sheriff's Office
Support Services Division



Racine County Sheriff's Office Courts, Conveyances, and Security

The Sheriff's Office is responsible for providing a safe and secure environment for those visiting our courts facilities. The Courthouse and Law Enforcement Center are staffed with Reserve Deputies at security check points when you enter these buildings. Individual courtrooms are also staffed with Deputies for security.



COURTHOUSE HOURS: 7:30am - 5:00pm Monday - Friday

Racine County Courthouse, 730 Wisconsin Avenue, Racine, WI 53403

The public entrance to the Racine County Courthouse is located on Wisconsin Avenue. All those entering the courthouse must go through the security check point and are subject to search. Please see the list below of prohibited items allowed.

LAW ENFORCEMENT CENTER: 7:30am - 5:00pm Monday - Friday

Racine County Law Enforcement Center (LEC), 717 Wisconsin Avenue, Racine, WI 53403

The public entrance to the Law Enforcement Center (LEC) is located off of Wisconsin Avenue across the street from the courthouse. All entering the LEC must go through a security check point and are subject to search. Please see the list below of prohibited items allowed.



Racine County Sheriff's Office Planning and Training

In addition to scheduling trainings for all Sheriff's Office employees in accordance with the Law Enforcement Standards Bureau, the Planning and Training Office oversees operations at the Robert L. Rohner Training Center.

This facility is a joint venture between the FBI, the Racine County Sheriff's Office, and WE Energies. Discussions began during 2003/2004 culminating in a financial commitment by the FBI and WE Energies donating land under the terms of a zero-cost lease agreement. The FBI contributed approximately \$1.5 million for the construction of a building, grounds improvements and a range house to serve the training needs of the FBI, the Racine County Sheriff's Office, and other local police agencies. WE Energies contributed approximately 25 acres of land along with enough clean fill to erect the existing berms on the north end of the range property. The training center is also available to other Racine County Law Enforcement agencies & Gateway Technical College.

The main building on the training center grounds features traditional classroom space on the main level along with bathrooms, showers, and a locker room. The classroom is equipped with audiovisual technology to accommodate various media formats for training and presentations. The lower level contains additional classroom space with a well-cushioned floor and open space for use in dynamic training. The building is climate-controlled year round.

The training center contains both a pistol range and a rifle range to accommodate the different types of weapons systems typically in use by law enforcement. The pistol range is equipped with a range tower that provides a vantage point for observation and it also serves as a control center for the fully automated target system. The architectural design of the training center along with the incorporated technologies ensure that Racine County Law Enforcement training needs are met well into the future.



Racine County Sheriff's Office Records Bureau

The Records Bureau is responsible for all records generated by patrol, investigative, and jail personnel in the normal course of their duties. These records include incident reports, accident reports, citations, photographs, electronic media, investigative reports, jail records, and any other documents related to these records kept during the normal course of business.

In 2015,
578 Sheriff's Fore-
closure Notices
were received, a
decrease of
11.21% from 2014

Filing, data entry of pertinent information, and storage are the main functions involved with maintaining the records. Arrest paperwork is collected, processed, and disseminated to the courts and District Attorney's Office as appropriate. The Records Bureau also maintains inactive jail files, fingerprint cards, and mug shots as part of its centralized records and identification functions. Records are warehoused for seven years prior to the destruction process set forth by Racine County. Some records, due to their nature, are kept past the seven-year period with no possibility of destruction.

Civil Process clerical functions are handled by Records Bureau personnel. This includes data entry, tracking, processing necessary documents, and collecting fees due.

Records clerks perform data entry, fingerprinting and photographing of non-custody defendants, sex offender registrants, juveniles arrested, and applicants and citizens requiring special licenses or certifications. This function utilizes jail management software and is interfaced with the State of Wisconsin Crime Information Bureau for electronic submission of fingerprints.

Records Bureau personnel respond to a wide range of requests for information and records from the general public, news media, attorneys and prosecutors, other law enforcement agencies, courts, and departmental employees. Crime statistics and arrest and accident report information is filed with the proper State and Federal agencies. Criminal record checks and requests filed under WI Open Records Law are date sensitive and are handled as high priorities.

Currently, the Records Bureau staff includes one supervisor, three full-time clerks and two part-time clerks. Office hours are from 8:00 AM until 4:30 PM, Monday through Friday excluding legal holidays.

Currently, the Administrative Services Coordinator is responsible for software application administration for dispatch and records management. This includes troubleshooting, training, drafting and implementation of procedures, and quality control for data entry functions. The Supervisor interacts with other networked agencies for software procedures and implementation.

Racine County Sheriff's Office Jail Division

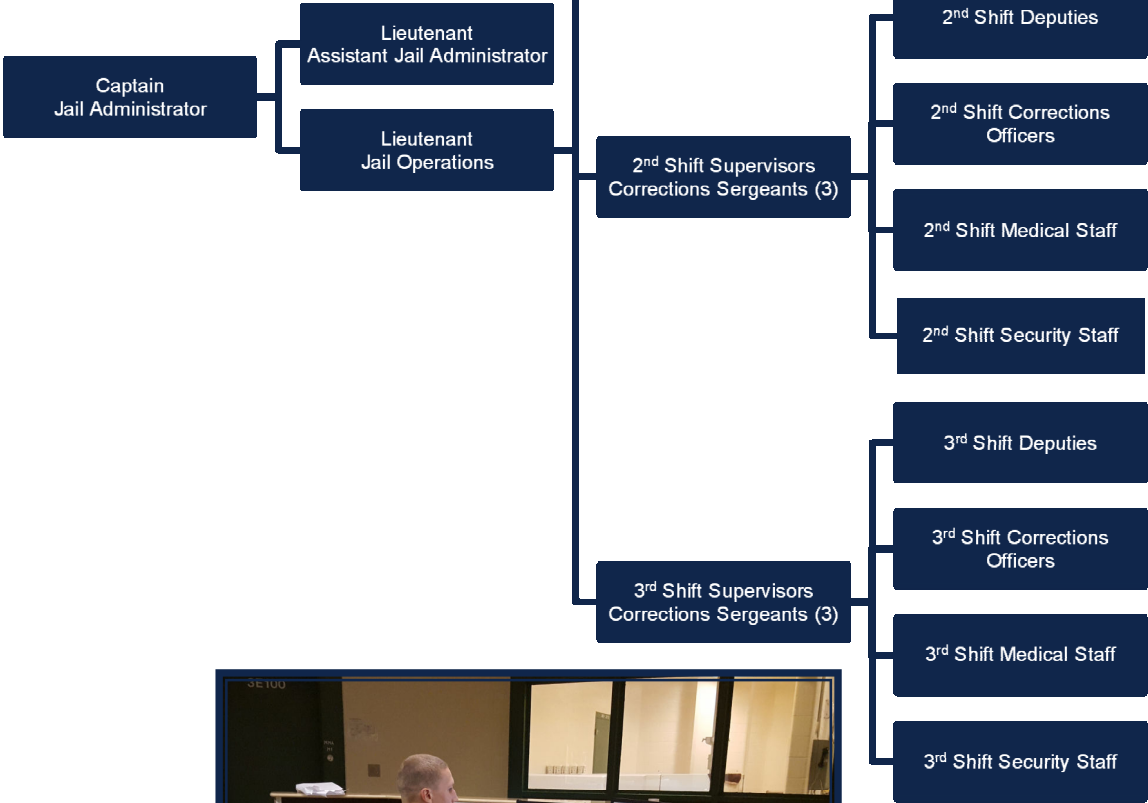
The Racine County Jail (RCJ) is one of the largest pre-detention facilities in the state of Wisconsin, with a maximum bed space for 876 detainees. The facility covers an entire city block in the downtown area of Racine complete with its own health and mental health services, privatized food and commissary services, one of the state's only in-house AODA programs, Chaplain's programming, law library, visiting area and newly innovated video visitation services.

Religious and educational needs are met through the Racine county Jail Chaplaincy Program. The Racine County Jail is committed to providing programs that aim to serve inmate's needs and the needs of the community.

The Racine County Sheriff's Office Jail Division is led by the Jail Administrator, Captain Doug Wearing.



Racine County Jail Staff





Racine County Jail Chaplaincy

Jail Chaplaincy Program

The Chaplaincy Program maintains a web site at:
www.racinecounty.com/chaplain

The Jail Chaplaincy Program provides a number of services and programs for inmates who request to be involved.

Chaplaincy programs include:

- Bible Study, including Spanish and Catholic studies
- Alcoholics Anonymous meetings
- One on One mentoring
- High School
- Life Skills – Basic skills in good living
- Pre-Release Assistance – how to obtain clothing, food, etc.
- Self Esteem – Better understanding who you are / who you want to be
- Anger Management – Men & Women
- Communications – learning to express yourself better
- Story Time – a DVD of a parent reading a story to their child
- Issues – Women only
- Domestic Violence – Women
- Library Services
- Drug Abuse Counseling
- Worship Services
- Post Release Support @ 262-898-8585

Alcohol and Drug Treatment Program

In January 2015, Behavioral Health Services of Racine County began to provide a 30-day Alcohol and Drug Treatment Program for inmates referred by a Department of Community Corrections Agent or court-ordered as a part of their sentencing. The program lasts 30 days, including 120 hours using the Living In Balance curriculum, which provides an integrated foundation for recovery from substance abuse. This 30 day program is followed up with six to nine months of continuing care based on the inmate's treatment needs and what level of programming will best support recovery from substance abuse. The goal is to provide and link incarcerated offenders with appropriate substance abuse treatment services in order to interrupt the drug abuse and the criminal justice cycle and lessen the use of criminal justice resources.

In 2015...

- ♦ 60 individuals participated in the treatment Program
- ♦ 67 individuals successfully completed the treatment program
- ♦ 2 persons were terminated from the program for behavioral issues

Jail Revenues

The Racine County Jail generates revenue from a number of sources, which are detailed in the table below.

Revenue Source	2009	2010	2011	2012	2013	2014	2015
SPO Holds	\$267,630	\$268,633	\$207,774	\$246,970	\$228,143	\$229,026	\$164,541
Comm. Sales	\$144,770	\$184,740	\$267,829	\$261,048	\$267,188	\$270,240	\$300,154
Bed Rentals	\$1,224,902	\$895,507	\$331,349	\$323,117	\$356,155	\$299,497	\$496,537
Inmate Phones	\$364,473	\$400,511	\$296,808	\$323,238	\$317,583	\$315,114	\$308,744
Other Municipalities	\$138,919	\$163,431	\$141,266	\$136,884	\$121,992	\$121,066	\$117,992
Huber Law	\$229,502	\$238,464	\$290,332	\$271,743	\$255,035	\$239,672	\$229,720
SS Reimbursement	\$47,600	\$56,800	\$65,000	\$69,600	\$51,000	\$53,000	\$28,000
Dept of Public Instruction Detention Lunch	\$77,395	\$58,875	\$60,804	\$36,613	\$56,525	\$34,158	\$75,085
Totals	\$2,495,201	\$2,266,961	\$1,661,162	\$1,346,096	\$1,653,621	\$1,561,773	\$1,720,773



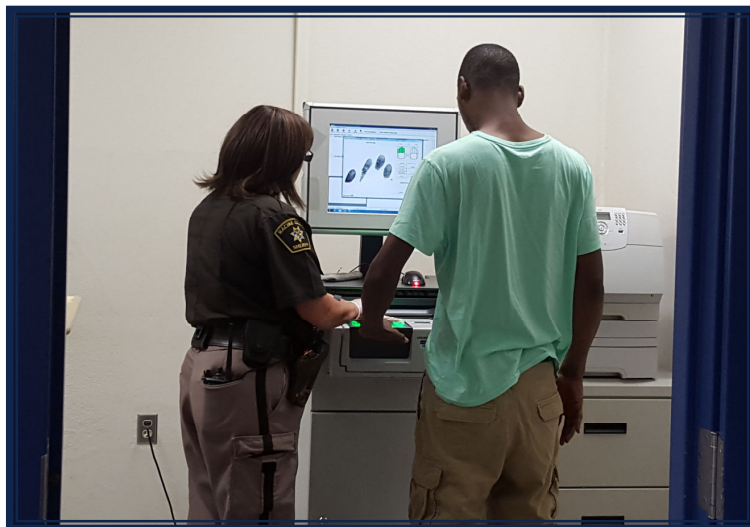
Jail Population

Persons are admitted to the Racine County Jail for numerous reasons. Some of the causes are:

- Sentenced Inmates (Huber and General Population)
- Pre-trial Detainees
- State Probation Holds
- Holds for Other Jurisdictions
- Returned on Writs

The jail population increased significantly during the last decade, but has been declining since 2009. The average daily population is shown below.

	2009	2010	2011	2012	2013	2014	2015
Jan	766	770	698	655	676	703	640
Feb	777	747	679	651	689	699	642
Mar	794	720	672	646	698	652	667
Apr	801	663	689	631	644	648	686
May	788	662	693	691	658	621	668
June	793	684	689	689	654	666	680
July	806	678	688	669	683	693	697
Aug	792	702	715	681	676	708	714
Sept	816	731	709	716	734	716	686
Oct	815	717	678	713	716	687	659
Nov	773	694	681	687	696	657	675
Dec	762	650	674	666	662	638	667
Average	790	702	689	675	682	674	673



Racine County Jail Admissions

2009	2010	2011	2012	2013	2014	2015
10,642	9,712	9,688	9,275	9,144	9,045	9,090

Average Length of Stay in Days

2009	2010	2011	2012	2013	2014	2015
26.7	29.2	27.4	26.4	29.3	29.6	27.4

Bed Days Saved by Program

	2009	2010	2011	2012	2013	2014	2015	TOTAL
Employment Program	7990	8822	6935	4796	4796	7041	6117	46,497
Day Reporting Center	11006	13982	12858	12239	12621	13207	12909	88,822
Treatment Court	2080	1040	1820	2080	2600	1300	1820	12,740
Community Service	1000	1266	996	812	665	853	248	5,840
Inmate Workers	6000	2757	2798	2637	2145	2403	1722	20,462
TOTAL	28,076	27,867	25,407	22,564	22,827	24,804	22,816	174,361



Racine County Jail Correctional Emergency Response Team (C.E.R.T.)

The Racine County Sheriff's Office Correctional Emergency Response Team. C.E.R.T. is a specially trained tactical response team that responds to disturbances within the Racine County Jail. The team consists of 15 members including a team commander, an assistant team commander and two team leaders. All correctional staff that has successfully completed their probationary period are eligible to try out for the team. The team receives additional training in disturbance resolutions and use of force situations. C.E.R.T. members have access to and are trained with additional equipment that can be used during disturbance resolution. Types of disturbances that the Correctional Emergency Response Team responds to include: cell extractions, dayroom disturbances, riots, or large scale searches, possibly involving uncooperative or violent inmates. C.E.R.T. is based on a team concept where all members work as one unit to achieve a common goal.



**Racine County Sheriff's Office
2015 Financial Summary**

	2009	2010	2011	2012	2013	2014	2015
Personnel Costs	\$21,278,336	\$20,312,669	\$19,272,807	\$19,342,753	\$18,876,466	\$19,560,168	\$20,264,168
Operating Expenses	\$3,818,866	\$4,742,674	\$4,460,159	\$4,444,938	\$5,987,868	\$3,794,721	\$4,849,592
TOTAL	\$25,097,202	\$25,055,343	\$23,732,966	\$23,787,691	\$24,864,334	\$23,354,889	\$25,113,760

Revenues							
	2009	2010	2011	2012	2013	2014	2015
General Revenues	\$1,143,812	\$840,278	\$1,015,660	\$1,081,354	\$941,477	\$1,088,808	\$13,675,358
Charges for Service	\$2,528,647	\$2,747,911	\$1,929,584	\$2,591,547	\$2,601,774	\$2,563,622	\$2,895,468
Other Revenue	\$728,404	\$495,267	\$734,490	\$184,096	\$301,452	\$273,265	\$261,621
Total Revenues	\$4,400,863	\$4,083,456	\$3,669,734	\$3,856,997	\$3,844,703	\$3,925,695	\$4,524,624
Tax Levy	\$20,696,339	\$20,971,887	\$20,063,232	\$19,930,694	\$21,019,631	\$19,429,194	\$20,589,136

**Racine County Sheriff's Office
2015 Promotions, Retirements and Active Military Personnel**

Promotions

01/21/2015 Corrections Officer Anthony Bose to Corrections Sergeant
12/13/2015 Corrections Officer Anthony LaCombe to Corrections Sergeant
12/23/2015 Investigator Chad Schulman to Sergeant
12/23/2015 Deputy Kent Milam to Investigator

Retirements

12/11/2015 Deputy Timothy Cluey
12/23/2015 Deputy James Skowronski
12/23/2015 Sergeant Thomas Bauer

Active Military Personnel

Corrections Officer Andrew Polasky
Deputy Daniel Fritsch
Deputy Andrew Willis
Investigator Kent Milam

**Racine County Sheriff's Office
2015 Sheriff's Awards and In Memoriam**

Racine County Employees of the Month:

Mark Ruggaber -- April 2015

Certificates of Appreciation – for Law Enforcement and Community Support

Steve Storm
Joseph Patla
Crime Stoppers of Racine County, Inc.
Bob's Mobile, Union Grove
The Charcoal Grill & Rotisserie, Racine West, Hwy 20
Michael Aimone, President, Village of Union Grove
Racine County Communications Center

Appreciate Plaque – for Law Enforcement and Community Support

McDonald's, Union Grove
Piggly Wiggly, Union Grove
Village of Union Grove

In Memory:

Gary Gage, Deputy (Retired) 01/10/2015
John Greco, Investigator (Retired) 01/31/2015
Ric Lee, Deputy (Retired) 10/30/2015
James Hansen, Deputy, (Retired) 12/30/2015

Acknowledgements

It was with the cooperation of many that this report has come to fruition.

This report represents another year of the Racine County Sheriff's Office history, progress and direction. We are moving forward .

Sincerely

A handwritten signature in black ink, reading "Christopher Schmaling". The signature is written in a cursive style with a large, sweeping initial "C".

Christopher Schmaling
Sheriff

