

# *Racine County Sheriff's Office*

*A Tradition  
Since 1836*



## *2011 Annual Report*

## Table of Contents

Message from the Sheriff .....	3
2011 Organizational Chart .....	4
Mission Statement .....	5
2011 Sheriff's Office Accomplishments .....	6
2011 Sheriff's Administration .....	7
Patrol Operations .....	9
I-94 Corridor C.O.P.S. ....	12
STEU C.O.P.S .....	14
K-9 Unit .....	15
Criminal Investigations Bureau .....	16
Evidence Custodian .....	17
Dive Rescue Team .....	18
Metro Drug Unit .....	20
Water Safety Patrol .....	22
Recreational Patrol .....	23
SWAT Team .....	24
Crisis Negotiation Team .....	26
Crisis Intervention Team .....	27
Administrative Support .....	28
Records Bureau .....	29
Racine County Jail .....	30
Jail Programs .....	32
Jail Revenues .....	34
Jail Population .....	35
Racine County Sheriff's Office CERT Team .....	38
Honor Guard .....	39
Racine County Sheriff's Citizen's Academy .....	40
Robert L. Rohner Training Center .....	41
Financial Summary .....	42
Promotions, Retirements & Active Military Personnel .....	43
Sheriff's Awards .....	44
Acknowledgments .....	45

## Sheriff Christopher Schmaling's Message

Greetings:

The Racine County Sheriff's Office is the chief law enforcement agency in Racine County. Our agency has full law enforcement authority throughout the county, including all the towns, villages, and cities, as well as the waters of Lake Michigan. We provide the following specialized functions:

- Metro Drug Unit
- Civil Process Unit
- Consumer Fraud Investigation
- Criminal Investigations Bureau
- Water Patrol
- SWAT Team
- Dive/Rescue Team
- Crisis Negotiators

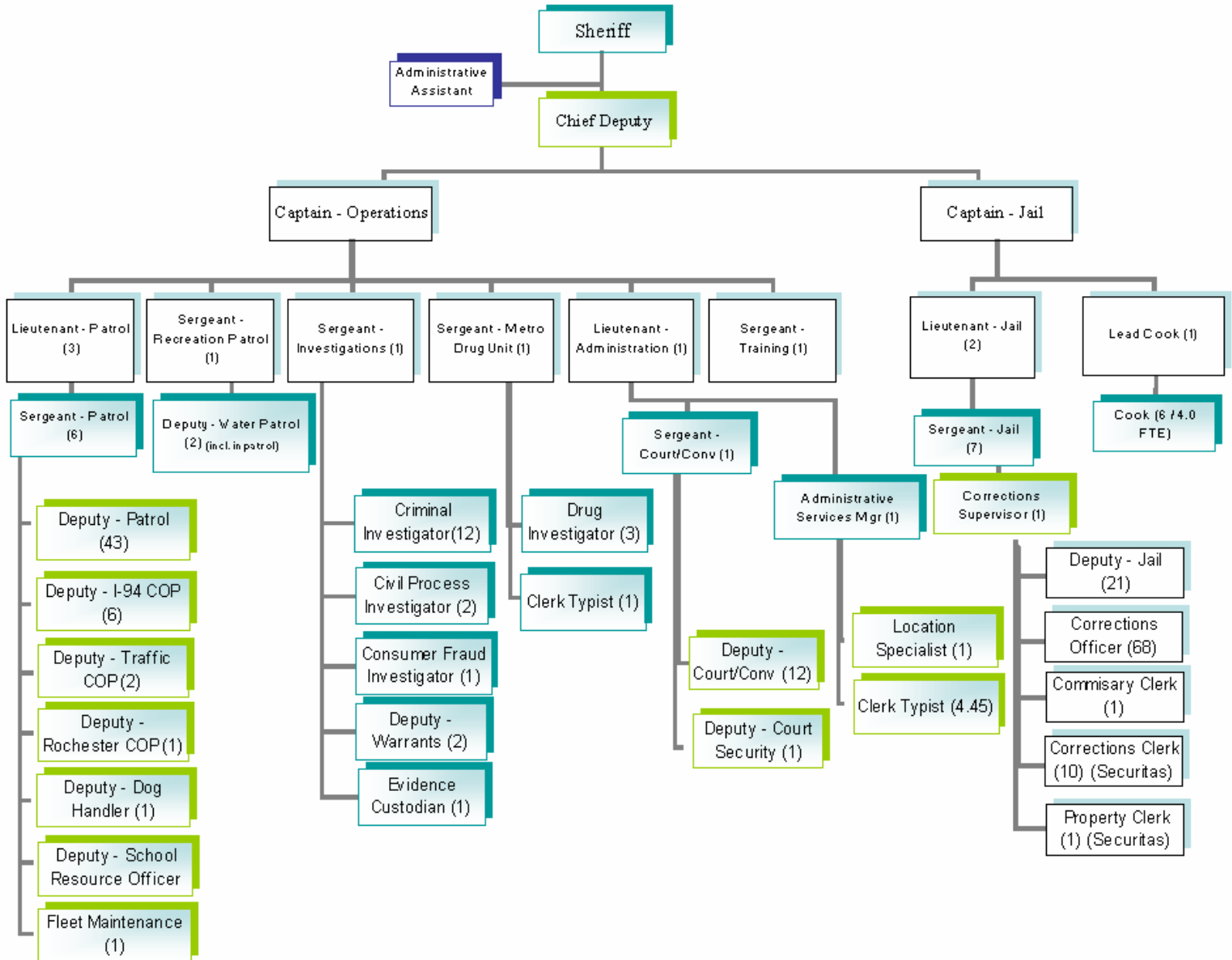
The Sheriff's Office is also responsible for the operation of the Racine County Jail. The jail's rated capacity of 876 persons makes it one of the largest in the state.

The professional staff of our agency remains dedicated to our mission of providing the core services that help maintain public safety, peace, and order in Racine County. We also remain committed to utilizing our resources in the most efficient and responsible manner possible. Our citizens expect these things, and deserve them. It is our great privilege to deliver these services to them.

Sincerely,  
Christopher Schmaling, Sheriff  
Racine County, Wisconsin



**2011 Organizational Chart  
Racine County Sheriff's Office**



**Racine County Sheriff's Office  
Mission Statement**

In Partnership with the Citizens, and with the cooperation of the communities within Racine County, the mission of the Racine County Sheriff's Office shall be the preservation of public safety, peace and order. This goal shall be met through proper utilization of the available resources in the most efficient manner possible while maintaining the highest levels of professionalism.



## RACINE COUNTY SHERIFF'S OFFICE 2011 ACCOMPLISHMENTS

**Violent Crime**  
7% decrease from  
2010

**Property Crime**  
8% decrease from 2010

In 2011, The Racine County Sheriff's Office led the transition to Joint Dispatch for all Racine County dispatch agencies, with the exception of the City of Burlington. This consolidation of dispatch services for virtually all law enforcement, EMS and fire services in the county will produce significant public safety and fiscal benefits for all agencies involved. In addition, it marks a major milestone in inter-governmental cooperation in Racine County.

The Sheriff's Office accepted \$510,056.00 in grant funding in 2011 for the following programs:

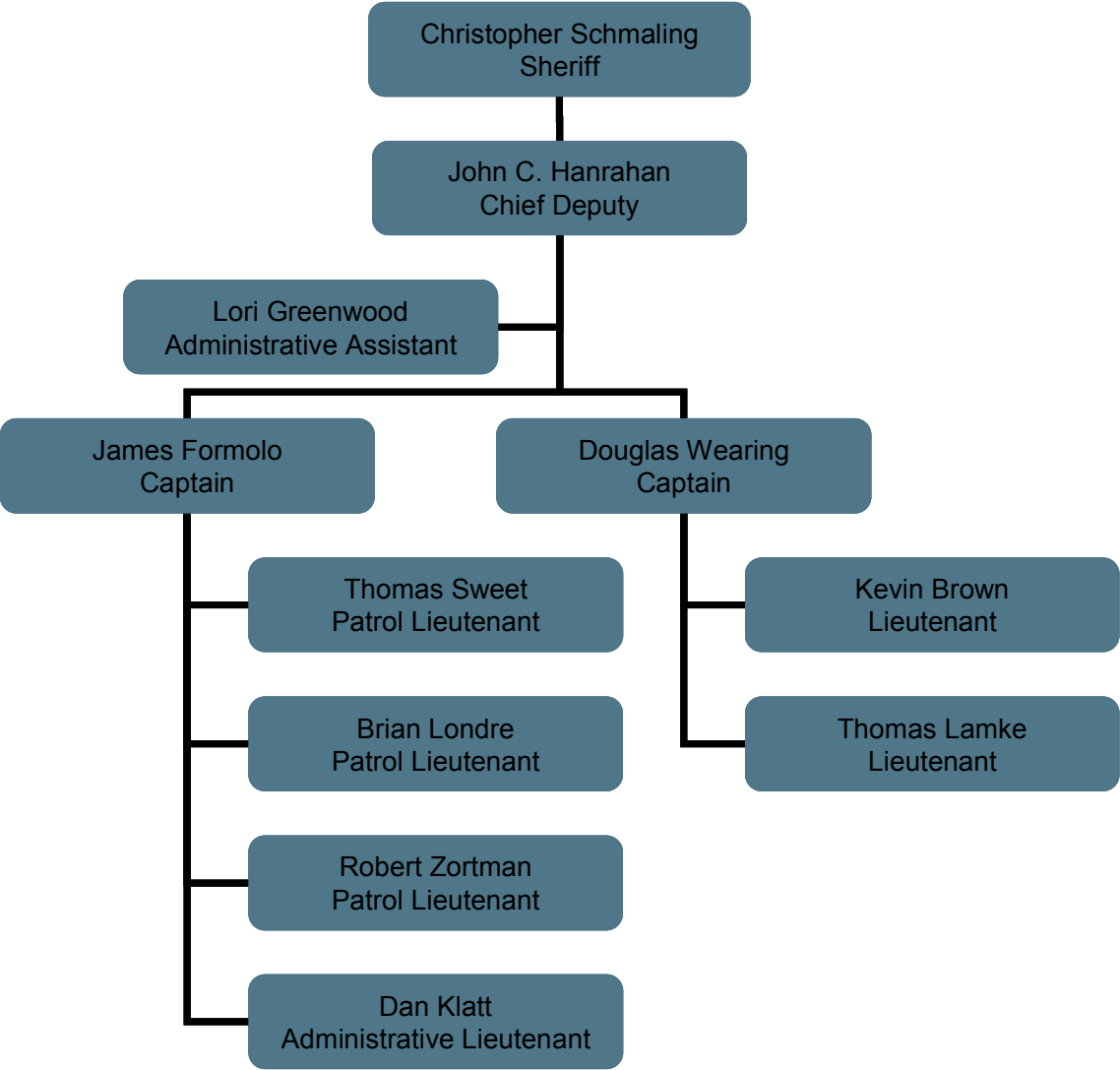
- Alcohol enforcement \$30,000
- CARD youth alcohol enforcement \$16,572
- I-94 traffic mitigation \$107,453
- TRACS \$40,810
- OJA Radio interoperability \$48,603
- Edward Byrne Memorial Justice Assistance Grant (MDU) \$69,385
- Justice Assistance Recovery Grant (City Crime Suppression & SUV) \$105,000
- Justice Assistance Program Grant (Court Security) \$44,402
- HIDTA Award \$40,000
- Weed and Seed \$4,967
- Bullet Proof Vest \$2,864

### Uniform Crime Reporting Statistics

Uniform Crime Reporting Statistics						
Offenses				Cleared		
	2010	2011	%	2010	2011	%
<b>Violent Crime</b>						
Murder	0	2	*	*	2	100%
Forcible Rape	4	3	25%	*	*	*
Robbery	1	2	100%	0	50%	*
Assault	10	7	-30%	100%	100%	0%
<b>Total</b>	<b>15</b>	<b>14</b>	<b>-7%</b>	<b>67%</b>	<b>71%</b>	<b>6%</b>
<b>Property Crime</b>						
Burglary	86	86	0%	17%	8%	-53%
Larceny Theft	491	459	-7%	14%	13%	-7%
Motor Vehicle Theft	39	24	-38%	23%	4%	-83%
Arson	0	0	0%	*	*	*
<b>Total</b>	<b>616</b>	<b>569</b>	<b>-8%</b>	<b>15%</b>	<b>12%</b>	<b>-20%</b>

\* Although an increase may have occurred, it is not possible to calculate the percentage change due to a zero amount in the previous year.

# 2011 Sheriff's Administration



## 2011 Sheriff's Administration

The Sheriff's Administration is responsible for the management and direction of the entire Office, and ensures that the Office obtains its goals and objectives.

The Sheriff's Office is a large, dynamic organization with ever-growing responsibilities. The Office is composed of many specialized units.

The Office's Administrative Staff provides support services to all operating units within the Office. Support and administrative services include; creating policy and procedure, handling citizen's complaints, accounting, records, training, communications and clerical support.



Chief Deputy John Hanrahan



Operations Captain James Formolo



Jail Captain Doug Wearing





## Racine County Sheriff's Office Patrol Operations

The Patrol Operation is supported by the Criminal Investigations Bureau, Metro Drug Unit, Racine County Water Safety Patrol and the Sheriff's K-9 Unit

In any Law Enforcement agency, whether a Sheriff's Office or Municipal Police Department, the backbone of the Office consists of the uniformed Patrol Operations.

The uniformed Patrol Operations of the Racine County Sheriff's Office currently has 63 Deputies and Supervisors who are responsible for Patrol activities in Racine County.

The Sheriff's Office Patrol Operations is the primary patrol operation for many of the Town's and Village's in Racine County, and has shared patrol responsibilities in those jurisdictions with their own full or part-time patrol operation.

The Sheriff's Office also provides contractual services for the Village of Union Grove, the Village of Waterford, the Village of Elmwood Park, the Town of Dover, the Town of Raymond, and the Village of Rochester.

Racine County Traffic Fatalities								
2003	2004	2005	2006	2007	2008	2009	2010	2011
18	20	26	21	17	20	7	10	10

Motorist's disregard for traffic laws contributes directly to injury and fatal accidents. The Racine County Sheriff's Office has taken an aggressive position in efforts to make the roadways in Racine County a safer place to operate motor vehicles.

In 2011, Wisconsin Department of Transportation awarded a total of \$154,025 for 3 safety programs.

The Sheriff's Office participated in the I-94 construction traffic mitigation program, youth alcohol enforcement and alcohol sales compliance program, and the alcohol enforcement program in 2011.



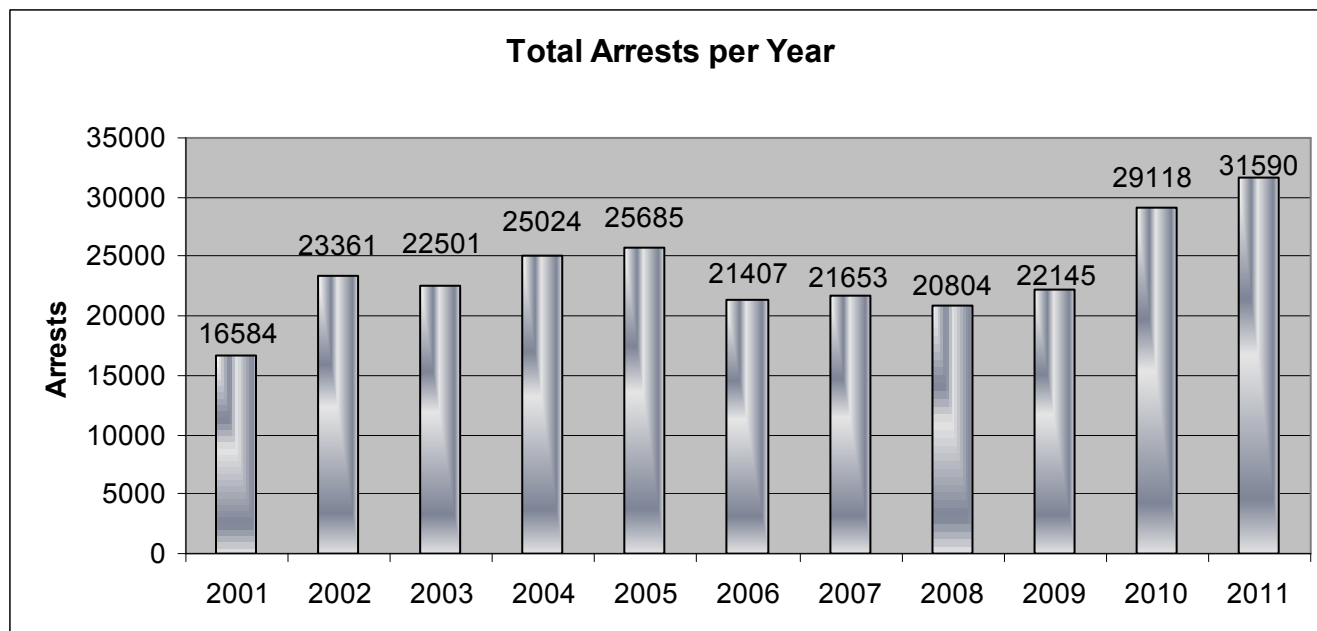
Racine County Sheriff Patrol Operations Statistics							
	2005	2006	2007	2008	2009	2010	2011
Total Miles Driven:	1,129,063	809,468	1,112,775	725,033	653,420	728,340	821,730
Total Hours Worked:	82,897	79,258	77,740	70,216	67,750	79,096	85,534

Complaint Activity							
	2005	2006	2007	2008	2009	2010	2011
Complaints Assigned:	17,948	17,852	17,139	14,619	13,704	14,683	14,410
Deputy Originated:	8,235	7,968	7,925	6,295	6,974	7,592	10,540
Complaint Follow Up	20,436	18,321	17,177	14,318	13,719	14,948	16,882
Complaints Assisted	6,294	5,957	5,163	4,509	3,943	4,966	5,369
<b>Total Complaints</b>	<b>52,913</b>	<b>50,098</b>	<b>47,404</b>	<b>39,741</b>	<b>38,340</b>	<b>42,189</b>	47,201

Other Enforcement							
	2005	2006	2007	2008	2009	2010	2011
Written Warnings	6,708	5,060	4,368	4,118	3,868	4,455	5,468
Arrest Warrants	1,679	1,489	1,090	1,143	1,047	718	932



## 2011 Arrests Statistics



Patrol Arrest Activity							
	2005	2006	2007	2008	2009	2010	2011
Speeding Citations	9,874	7,961	8,301	5,519	7,746	11,310	9,914
Other Traffic Violations	9,606	7,074	6,461	7,258	7,653	9,677	11,650
OWI	568	536	445	332	302	298	313
Citations from Crashes	591	468	540	505	403	429	466
Parking	1,424	1,367	1,337	1,679	1,417	1,268	1,048
Felonies	155	192	187	159	123	163	124
Misdemeanor Arrests	922	979	846	717	662	625	708
Ordinance Arrests	865	778	791	770	799	732	638
<b>TOTAL PATROL ARRESTS</b>	<b>24,005</b>	<b>19,355</b>	<b>18,908</b>	<b>16,939</b>	<b>19,105</b>	<b>24,502</b>	<b>25,793</b>

## 2011 I-94 Corridor C.O.P.S.

The Racine County Sheriff's Office has created the I-94 Corridor Patrol. Officers aggressively patrol the Interstate as well as property locations within one mile of I-94 in efforts to make the roadways and businesses in Racine County a safer place to operate motor vehicles and conduct commercial operations. The operation is in its ninth year of operation, and has made a significant impact on traffic safety in Racine County, reducing serious injury accidents from non corridor patrol years.

<b>2011 I-94 Corridor C.O.P.S. Activity</b>	
Speeding Citations	5,499
Drivers license violations	1,598
Registration violations	1,430
Restraint violations	564
OWI Arrests	45
Open intoxicants in Motor Vehicle	31
Other traffic citations	3,108
<b>TRAFFIC SUB TOTAL</b>	<b>12,275</b>

Drug Arrests (Felony non warrant)	45
Warrants/Commitments	343
CIB Hits	243
Resist – Obstructing	33
CCW / Weapons	11

<b>Drugs seized</b>	
THC	13,290.6 grams
Cocaine	2.2 grams
Heroin	2.3 grams
Schedule II, IV, V Drugs	9 tabs
Schedule III Drugs	10 milligrams

2011 citations/arrests:	12,950
Cash seized	\$0.00

<b>2002-2011 I-94 Corridor Activity Summary</b>	
Speed violations (2002-2011)	57,711
OWI (2002-2011)	653
Other traffic* (2002-2011)	11,389
Driver's license violations (2003-2011)	11,390
Registration violations (2003-2011)	10,953
Restraint violations (2003-2011)	4,253
Open intoxicants in Motor Vehicle (2003-2011)	570
Resist/obstruct	463
CCW/weapons	207
Warrants/Commitments	3,599
*Other traffic includes: Following too closely, Unreasonable & imprudent speed, Unsafe lane deviation, Fail to signal, Too fast for conditions, Equipment, Failure to obey sign or signal, Improper plates, Overweight, Operating left of center, Reckless driving, Racing, Parking, Window tint.	

<b>Drugs seized</b>	
THC	45,435.5 grams or 100.17 pounds
Heroin	164.3 grams or .362 pounds
Cocaine	27,350.3 grams or 60.3 pounds
Other drugs	463.1 grams or 1.20 pounds of Ecstasy,  1,068 tabs/pills of various controlled pills/ schedule II and schedule IV  46.2 grams Psilocybin

<b>Total amount of seized drugs:</b>	<b>162.03 pounds</b>
--------------------------------------	----------------------

<b>Cash seized</b>	<b>\$518,486</b>
--------------------	------------------

<b>2002-2011 citations/arrests:</b>	<b>102,647</b>
-------------------------------------	----------------

## STEU C.O.P.S.

In 2010, two new C.O.P. positions were created to function as a specialized traffic enforcement unit with a concentration on state and county highway traffic enforcement.

2011 STEU Statistics	
Base Fine	\$270,123.00
Total Citation Bond	\$755,385.05
Total Warrant Bond	\$30,757.60
Total Misdemeanor/Felony Bond	\$33,300.00
Total Traffic Citations	3,285
Ordinance Citations	7
Misdemeanor Drug Arrests	5
Felony Drug Arrests	2
Weapons Violations	0
Total Misdemeanor Arrests	24
Total Felony Arrests	4
Total THC Weight	67.4 Grams
Total Cocaine Weight	0
Total Cash Seized	\$0.00



## Racine County Sheriff's Office K 9 Unit

In 1999, the Racine County Sheriff's Office began its first Canine unit. With the generous support of many businesses and citizens, the program was launched. With participation from the Racine County Deputy Sheriff's Protective Association a handler was selected and K 9 DAX began service.

After the retirement of K 9 DAX, K 9 Gingiss was placed into service in June of 2005. Gingiss is a Belgian Malinois. Gingiss is a dual purpose K 9, trained in narcotics detection, tracking, building and area searches, as well as searching for articles and evidence.

Currently, Gingiss is partnered with Deputy Jeff Scherer. They trained intensively for five weeks before returning to Racine and active duty. Since beginning their duty, Deputy Scherer and Gingiss have made many criminal and narcotics arrests.

In 2011, a donation of more than \$14,000.00 was made to the Sheriff's Office to add an additional K 9 to the Sheriff's Office K 9 unit in 2012.



## Racine County Sheriff's Office Investigative Bureau

The Racine County Sheriff's Office Investigative Bureau was comprised of 1 Lieutenant and 15 Investigators. Two Investigators are assigned to Civil Process and 1 is assigned to Consumer Fraud Investigations.

The Investigative Bureau has a number of specialized units staffed by highly trained and skilled Investigators.

- Sexual Assault
- Child Abuse
- Burglary & Theft
- Arson Investigations
- White Collar & Financial Crimes
- Internet Crimes
- Traffic Investigations
- Consumer Fraud
- Death Investigation
- Street Gangs



<b>2011 Criminal Investigation Activity Summary</b>		
Classification	Total calls for Service	Calls investigated by Bureau
Thefts	759	137
Burglaries	114	61
Sex Offenses	84	66
Physical Assaults	120	29
Fraud	203	89
Robberies	2	2





## Racine County Sheriff's Office Evidence Custodian

The Racine County Sheriff's Office Evidence Custodian is responsible for the proper collection, identification, and preservation of evidence collected by Deputies and Investigators.

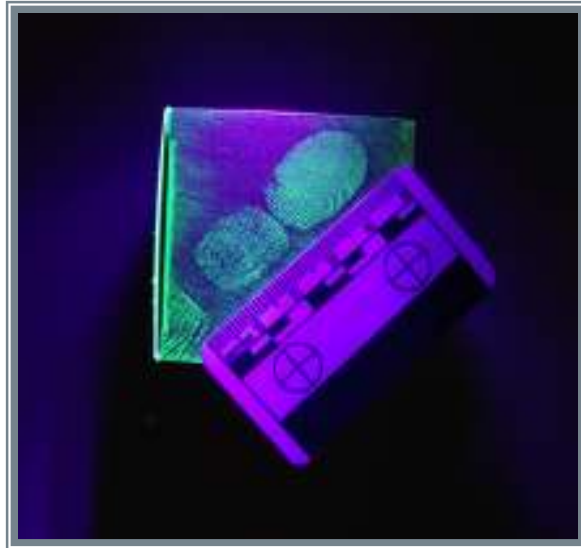
In 2011,  
4,081 items of  
evidence were  
inventoried

The Evidence Custodian maintains the 'chain of custody' of evidence that may be sent to the Crime Lab for analysis.

Collection and processing of evidence is a constantly changing field that demands the Office be current in the latest technological procedures. Our Evidence Custodian and Investigators are highly involved in learning new processes and proper technique for evidence collection.

In 2011, 3,682 items were returned to the rightful owner or disposed of, 51 vehicles were processed, 227 items were taken to the Crime Lab for analysis.

In addition to evidence of criminal activities, 185 blood samples of potential OWI situations were processed through the always-busy Evidence Section and the Wisconsin State Hygiene Lab/Crime Lab.



## Racine County Sheriff's Office Dive Rescue Team

The Racine County Sheriff's Office Dive Rescue Team is a member of the Racine County Water Rescue Response Team (RCWRRT) which operates under the Mutual Aid Box Alarm System Agreement (the "MABAS") Division 102 under the authority and oversight of the Sheriff. RCWRRT members are comprised of public safety agencies within Racine County including Sheriff's Deputies, Police Officers, and Fire & Rescue personnel. RCWRRT members include rescue/recovery divers, surface rescuers and shore/boat support personnel. At the present time, the RCWRRT has approximately 60 members.

The primary function of the RCWRRT is to make every reasonable attempt to save any person that may be drowning or has disappeared under the surface of any body of water within Racine County.

Additionally, the RCWRRT will make every reasonable effort to recover the body of any person that has been declared a drowning victim in any body of water within Racine County. The team also responds for evidence recovery operations and provides safety for water related events throughout Racine County.



Because the RCWRRT is comprised of multiple agencies with numerous specialized assets and personnel, it is considered a regional response team and has assisted other agencies of Southeastern Wisconsin and Illinois with their waterborne operations.

RCWRRT member agencies schedule intensive practical trainings each month and open their respective trainings to other member agencies. All active divers must have a minimum of an advanced certification through a professionally accredited SCUBA certification agency.

The RCWRRT has also obtained specialized equipment to make underwater searches safer and faster. This includes an underwater towable video system, diver to diver underwater communications, surface supplied air system, and a diver to surface video system. Rescue boats are staged east and west of I-94 for rapid deployment to any body of water in Racine County.

Many RCWRRT members have taken continuing education courses and are certified in such specialties as: Advanced Open Water, Rescue Diver 1 & 2, Medical Dive Specialist, Ice Diver, Wreck Diver, Night Diver, Computer Diver, Deep Diver, Cave Diver, Equipment Repair Specialist, Swift Water Rescue, Underwater Investigator, Underwater Death Investigator, Nitrox Diver, Staged Decompression Diver, Advanced Tri-Mix Diver, Advanced Gas Blender, Dive Master, and Dive Instructor.

The Racine County  
Sheriff's Office Dive  
Rescue Team  
completed 444 Hours  
of Proficiency Training  
in 2011

## Racine County Sheriff's Office Dive Rescue Team

Dive Team – 2011 Calls for Service	
Rescues	6
Possible Drownings	2
Recoveries	2
Assist Other Jurisdictions	3
Water Safety Events	2
Public Relation Events	5



## Racine County Sheriff's Office Metro Drug Unit

Three Investigators, one supervising Sergeant, and a part time Secretary currently staff the Racine County Metro Drug Unit. All members of the METRO Drug Unit are Sheriff's Office personnel.

The Metro Drug Unit executed 87 search warrants during 2011

The Unit was created to provide a coordinated and comprehensive effort to investigate and arrest those who engage in the trafficking of illegal drugs within Racine County. The Unit works closely with the FBI, IRS, DEA and the Federal Prosecutors Office, as well as other State and local Law Enforcement agencies such as SEADOG, a 5 county information and intelligence sharing cooperative.

During 2011, there were 972 arrests made for various drug charges in Racine County. Of those arrested, 146 are juveniles. There were 454 Felony charges, 325 Misdemeanors, and 47 Ordinance violations.

2011 Metro Drug Activity - Seizures		
Substance	Quantity	Street Value in US Dollars
<b><u>Aderrall</u></b>	95 tbls	475.00
<b><u>Alprazolam</u></b>	313 tbls	1565.00
Cocaine	2307.5 grms	230,750.00
Crack Cocaine	345.5 grms	24,185.00
Heroin	126.2 grms	25,240.00
<b><u>Hydrocodone</u></b>	29 tbls	145.00
Marijuana – THC	886,037.9 grms	8,860,379.00
Marijuana Plants	585	585,000.00
Xanax	43 tbls	215.00
Oxycontin	16 tbls	320.00
<b><u>Oxycodone</u></b>	159 tbls	2,850.00
<b><u>Misc Tablets</u></b>	399 tbls	1,995.00
<b><u>Total</u></b>		<b>\$9,733,119.00</b>



## Metro Drug Unit Statistics

Metro Drug Unit					
Felony Charges	2007	2008	2009	2010	2011
	406	250	366	373	454

Metro Drug Unit					
Search Warrants	2007	2008	2009	2010	2011
	51	48	39	75	87



## Racine County Sheriff's Office Water Safety Patrol

The Racine County Sheriff's Office continues to operate the Water Safety Patrol on Lake Michigan and on inland lakes and rivers throughout Racine County. The Water Safety Patrol operates from April 1<sup>st</sup> until about the second week of November. During the summer months, Water Safety Patrol Deputies are assisted by approximately 5 college student summer employees.



The Water Safety Patrol continues to be partially funded by the Department of Natural Resources. Annually, up to 17% of the costs of operating the Water Safety Patrol are reimbursed to Racine County.

The Racine County Sheriff's Water Safety Patrol responds to assist boaters for a variety of incidents, including accidents, engine failures, and rescue as well as enforcement activities.

Water Safety Patrol Calls for Service 2011	
Assist Other Jurisdiction	<b>12</b>
Boat Accident	<b>3</b>
Reported Drowning	<b>1</b>
Hazard to Navigation	<b>12</b>
Boating Violations	<b>47</b>
Vessel in Distress	<b>32</b>
Boat Inspections	<b>19</b>
Persons Assisted	<b>37</b>
<b>TOTAL CALLS FOR SERVICE</b>	<b>161</b>



## Racine County Sheriff's Office Recreational Patrol



## Racine County Sheriff SWAT Team

The Racine County Sheriff's Office SWAT team is comprised of deputies from the patrol division, investigators and supervisors from all areas of the Sheriff's Office.

Team members train regularly to assist Racine County law enforcement agencies while serving high risk search warrants, fugitive apprehensions and resolving barricaded subject and hostage situations.





## Racine County Sheriff SWAT Team



Regular hands on and classroom training combine to keep team members skills at the level needed to safely operate in these high risk scenarios.



## Racine County Sheriff Crisis Negotiation Team (CNT)

The Racine County Sheriff's Office Crisis Negotiation Team (CNT), consists of 15 sworn members of the Sheriff's Office. The CNT responds to calls from the Patrol Division for assistance with barricaded subjects, hostage situations, domestic abuse calls, and other calls requiring specialized training at resolving dangerous situations safely and peacefully through verbal skills.



All the CNT members have received continuous training through the FBI, State of Wisconsin Crisis Negotiators Association, Wisconsin DCI, and Wisconsin D.O.C. The CNT also trains locally throughout the year using scenario training with other teams, and with the Racine County Sheriff's Office SWAT Team.



## Racine County Crisis Intervention Team

Racine County started the current C.I.T. program in the Spring of 2009 through the assistance of then County Executive McReynolds and the local branch of NAMI (National Alliance of Mental Illness) who saw a need to train local members of the Law Enforcement Community who were responding to calls for service involving those suffering from a mental disorder or in crisis.

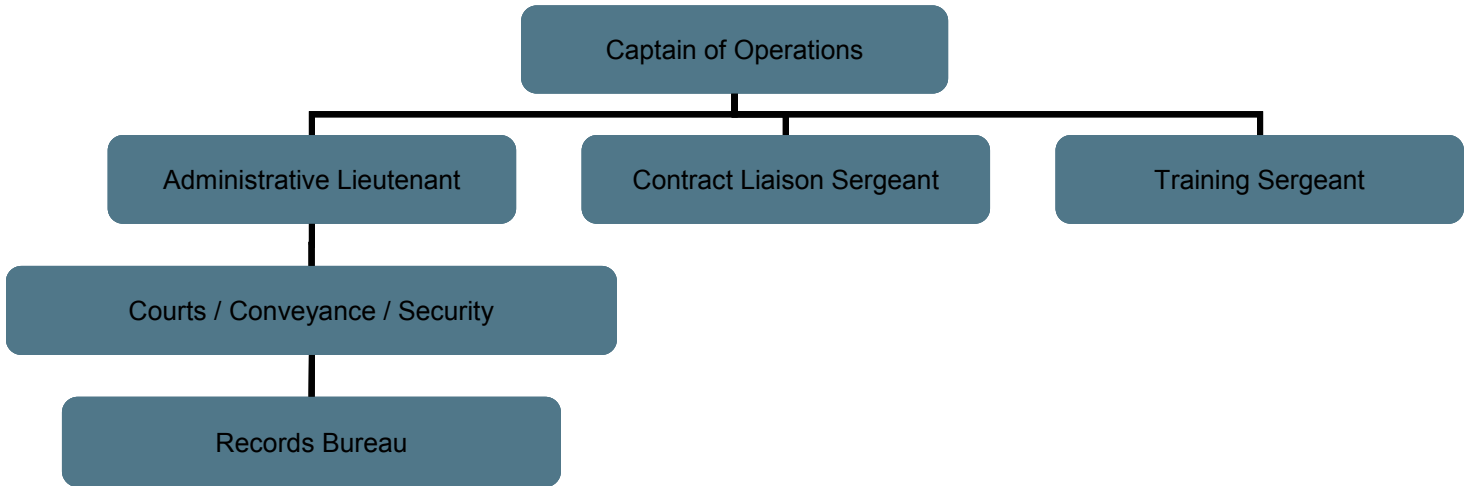
Since the program's inception in Racine County, we have had 5 classes graduate consisting of officers from every Law Enforcement Agency throughout Racine County; approximately 100 Officers have completed the 40 hour course.

Officers attending this course of study learn from local experts in the field of mental health and from consumers themselves on ways of better handling their crisis at the time of the call. In short, the CIT works to find better, safer ways to handle these calls.

The Racine County C.I.T. program also partners with C.I.P. (Crisis Intervention Partner) and conducts 2, 16 hour classes a year geared towards dispatchers, nurses, fire personnel, corrections, HSD and others dealing with people suffering from a mental disorder or in crisis.



# Administrative Services Structure



## Racine County Sheriff's Office Records Bureau

The Records Bureau is responsible for all records generated by patrol, investigative, and jail personnel in the normal course of their duties. These records include incident reports, accident reports, citations, photographs, video tapes, investigative reports, jail records, and any other documents related to these records kept during the normal course of business.

In 2011,  
1,289 Sheriff's  
Foreclosure Notices  
were received, a  
decrease of 9.5%  
from 2010

Filing, data entry of pertinent information, and storage are the main functions involved with maintaining the records. Arrest paperwork is collected, processed, and disseminated to the courts and District Attorney's Office as appropriate. The Records Bureau also maintains inactive jail files, fingerprint cards, and mug shots as part of its centralized records and identification functions. Records are warehoused for seven years prior to the destruction process set forth by Racine County. Some records, due to their nature, are kept past the seven-year period with no possibility of destruction.

Civil Process clerical functions are handled by Records Bureau personnel. This includes data entry, tracking, processing necessary documents, and collecting fees due.

Records clerks perform data entry, fingerprinting and photographing of non-custody defendants, sex offender registrants, juveniles arrested, and applicants and citizens requiring special licenses or certifications. This function utilizes jail management software and is interfaced with the State of Wisconsin Crime Information Bureau for electronic submission of fingerprints.

Records Bureau personnel respond to a wide range of requests for information and records from the general public, news media, attorneys and prosecutors, other law enforcement agencies, courts, and departmental employees. Crime statistics and arrest and accident report information is filed with the proper State and Federal agencies. Criminal record checks and requests filed under WI Open Records Law are date sensitive and are handled as high priorities.

Currently, the Records Bureau staff includes one supervisor and four full time clerks. Office hours are from 8:00 AM until 4:30 PM, Monday through Friday excluding legal holidays.

The Administrative Services Coordinator is also responsible for the position of Warrants Location Specialist. This person tracks, validates, and processes warrants served by deputies of this Office. The Warrants Location Specialist files detainers and coordinates with applicable courts to correct or amend warrant documentation.

Currently, the Administrative Services Coordinator is responsible for software application administration for dispatch and records management. This includes troubleshooting, training, drafting and implementation of procedures, and quality control for data entry functions. The Supervisor interacts with other networked agencies for software procedures and implementation.

## The Racine County Jail

The Racine County Jail is located at 717 Wisconsin Avenue in downtown Racine. It is part of the Racine County Law Enforcement Center that opened in 1981. At the time the “new” jail opened, inmate capacity numbered 144. Today, after several expansion and double bunking projects, the jail’s capacity is 876 inmates.

Wisconsin State Statute 59.27 requires the Sheriff of each County to “Take the charge and custody of the jail maintained by the County and the persons in the jail, and keep the persons in the jail personally or by a Deputy jailer.”

Racine County employs a combination of sworn Deputy Sheriffs and civilian Correction Officers to satisfy this mandate. Jail support staff includes cooks and clerk typists.

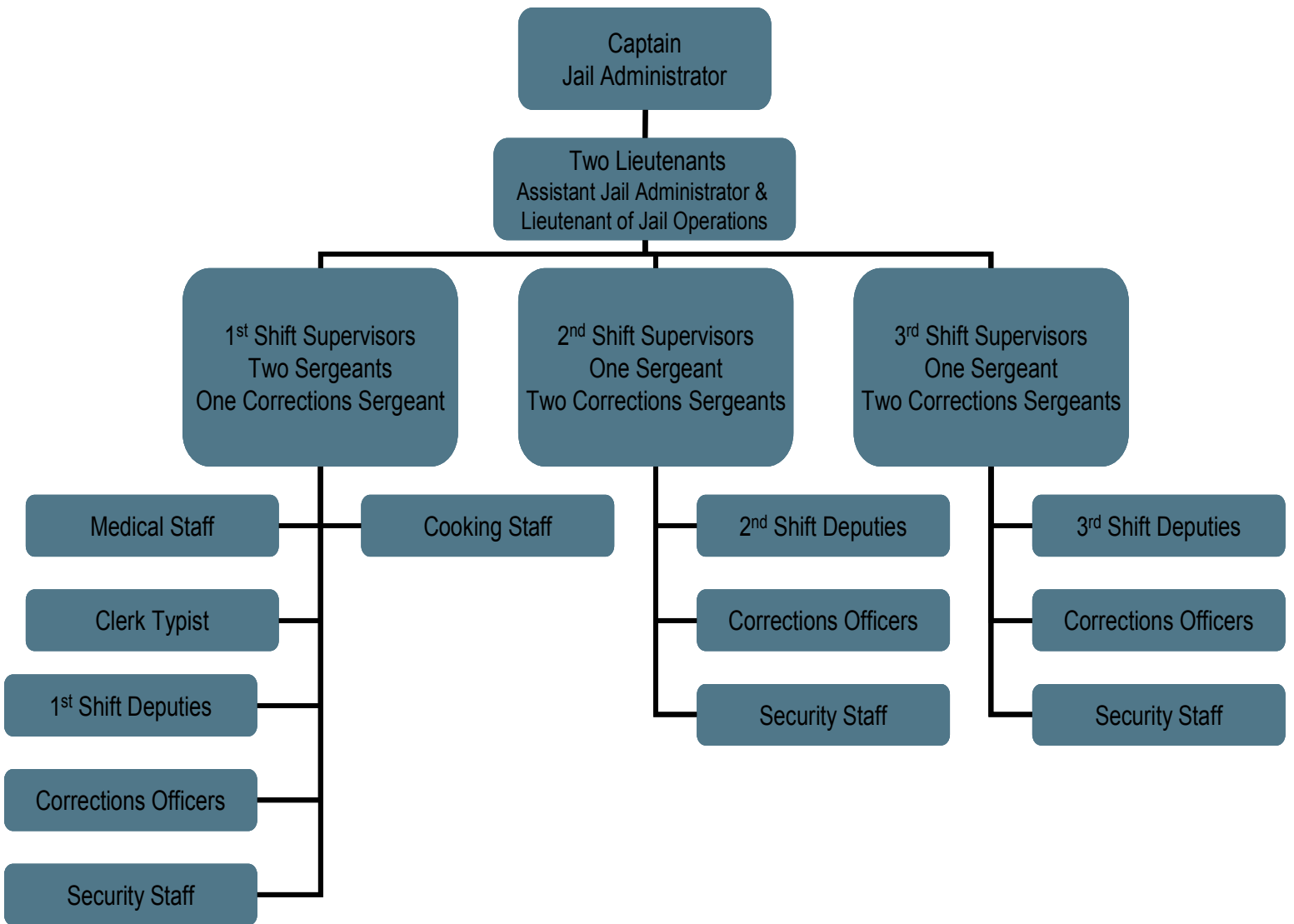
**21 Deputies**  
**68 Correction Officers**  
**1 Clerk typist**

The Mission of the Racine County Jail is to safely, securely and humanely detain all persons admitted to the facility. To attain this mission, all staff receives professional training in modern corrections practices, and are expected to be in compliance with formal policies, procedures, and rules that guide them in the performance of their duties.

In addition to maintaining a safe and secure facility, the jail is obligated to provide for the medical, religious, and educational needs of its inmates. Religious and educational needs are met through the Racine county Jail Chaplaincy Program. The Racine County Jail is committed to providing programs that aim to serve inmate’s needs and the needs of the community.



# Racine County Jail Staff



## Jail Chaplaincy Program

The Jail Chaplaincy Program provides a number of services and programs for inmates who request to be involved.

Chaplaincy programs include:

- Bible Study, including Spanish and Catholic studies
- Alcoholics Anonymous meetings
- One on One mentoring
- GED and Tutoring
- High School
- Life Skills – Basic skills in good living
- Pre-Release Assistance – how to obtain clothing, food etc.
- Self Esteem – Better understanding who you are / who you want to be
- Anger Management – Men & Women
- Communications – learning to express yourself better
- Story Time – a DVD of a parent reading a story to their child
- Issues – Women only
- Domestic Violence – Women
- Library Services
- Drug Abuse Counseling
- Worship Services
- Post Release Support @ 262-898-8585





## Other Inmate Programs

There are other programs are provided to inmates in addition to those of the Jail Chaplaincy. The Jail provides a comprehensive in house **AODA Treatment Program**, started in June of 1998. The AODA Treatment Program has two main components: a 20-day in- Jail element and a nine-month post Jail aftercare module.

The housing configuration allows up to twenty inmates, both male and female, to receive treatment during the in-house portion. This is an intensive segment administered by certified AODA professionals. It lasts for approximately twenty days and runs from 7:00 AM until 10:00 PM seven days a week, including holidays.

The aftercare phase is nine months long and is a holistic service integrating housing, employment and other community outreach assistance, as well as continued alcohol and drug counseling. Inmates are admitted to aftercare after successful completion of in-house treatment and staying of their sentences by the sentencing court. If the inmate successfully completes the aftercare phase, the stayed sentence becomes time served.

The Jail's **Inmate Worker Program** and **Community Work Service Program** allow approved inmates to earn reductions in their sentences. Inmate Worker participants work in the Jail kitchen and laundry, as well as performing janitorial work throughout the Jail interior. There is also an inmate worker crew that specialize in the painting of the jail and performing other needed more specialized cleaning in the jail. Community Work Service participants work for non-profit community groups. In each program, the goals are to have the inmates provide useful service to the community and reduce Jail bed days. Community Work Service inmates also shovel the side walks of the LEC and Court House and mow the grass medians on the counties highways.



## Jail Revenues

The Racine County Jail generates revenue from a number of sources, which are detailed in the table below.

Revenue Source	2004	2005	2006	2007	2008	2009	2010	2011
SPO Holds	\$336,240	\$224,138	\$165,258	\$206,752	\$219,900	\$267,630	\$268,633	\$207,774
Comm. Sales	\$354,624	\$210,968	\$175,886	\$127,797	\$145,778	\$144,770	\$184,740	\$267,829
Bed Rentals	\$56	\$0	\$0	\$20,121	\$1,203,083	\$1,224,902	\$895,507	\$331,349
Inmate Phones	\$599,747	\$435,675	\$368,642	\$543,342	\$450,815	\$364,473	\$400,511	\$296,808
Other Municipalities	\$85,525	\$75,583	\$99,015	\$103,161	\$121,172	\$138,919	\$163,431	\$141,266
Huber Law	\$319,702	\$319,008	\$273,640	\$356,668	\$315,177	\$229,502	\$238,464	\$290,332
SS Reimbursement	\$26,200	\$36,400	\$42,333	\$41,600	\$40,600	\$47,600	\$56,800	\$65,000
Dept of Public Instruction Detention Lunch	\$99,250	\$84,920	\$110,150	\$91,564	\$91,316	\$77,395	\$58,875	\$60,804
<b>Totals</b>	<b>\$1,821,334</b>	<b>\$1,386,692</b>	<b>\$1,234,924</b>	<b>\$1,491,005</b>	<b>\$2,587,841</b>	<b>\$2,495,201</b>	<b>\$2,266,961</b>	<b>\$1,661,162</b>

## Jail Population

Persons are admitted to the Racine County Jail for numerous reasons. Some of the causes are:

- Sentenced Inmates (Huber and General Population)
- Pre-trial detainees
- State Probation Holds
- Holds for other jurisdictions
- Returned on Writs

The jail population increased significantly during the last decade, but declined slightly in 2011. The average daily population is shown below.

	2002	2003	2004	2005	2006	2007	2008	2009	2010	2011
Jan	569	620	619	611	661	698	751	766	770	698
Feb	592	629	613	616	673	662	783	777	747	679
Mar	610	634	620	619	683	662	778	794	720	672
Apr	639	634	661	638	643	684	762	801	663	689
May	645	656	665	662	654	725	769	788	662	693
June	646	655	679	710	643	749	775	793	684	689
July	654	659	652	722	688	768	772	806	678	688
Aug	641	660	647	728	707	758	834	792	702	715
Sept	659	655	645	733	720	773	830	816	731	709
Oct	680	682	668	721	715	758	825	815	717	678
Nov	655	675	662	685	709	739	814	773	694	681
Dec	602	636	611	603	694	701	759	762	650	674
<b>Average</b>	<b>633</b>	<b>650</b>	<b>645</b>	<b>671</b>	<b>683</b>	<b>723</b>	<b>788</b>	<b>790</b>	<b>702</b>	<b>689</b>

## Racine County Jail Admissions

2002	2003	2004	2005	2006	2007	2008	2009	2010	2011
10,931	10,859	10,680	10,829	11,650	11,624	11,118	10,642	9,712	9,688

## Average Length of Stay in Days

2002	2003	2004	2005	2006	2007	2008	2009	2010	2011
25.1	26	22.6	20.5	21.4	22.7	25.6	26.7	29.2	27.4

## Bed Days Saved by Program

	2006	2007	2008	2009	2010	2011	TOTAL
AODA Program	7,650	7,544	7,553	7,565	8,820	8,412	47,544
Employment Program	6,809	7,519	6,478	7,990	8,822	6,935	44,553
Day Reporting Center	8,172	8,033	8,067	11,006	13,982	12,858	62,118
Treatment Court		1,135	2,600	2,080	1,040	1,820	8,675
Community Service			631	1,000	1,266	996	3,893
Inmate Workers			3,464	6,000	2,757	2,798	15,019
<b>TOTAL</b>	<b>22,631</b>	<b>24,231</b>	<b>28,793</b>	<b>35,641</b>	<b>36,687</b>	<b>33,819</b>	<b>181,802</b>

In order to accommodate the increased demands on the Jail's space, the entire living facility area was double bunked in a renovation project completed in 1998.

The Sheriff's Office has implemented AODA, Children First and Community Work Service programs so that more Jail bed days could be saved. The Sheriff and Jail management have continued to explore ways to relieve crowding, including the implementation of a Day Reporting Center in early 2001.

In 2006, the County Board approved a Jail construction project that included additional dormitory style housing for inmates, a new intake area, a new vehicle sally port and remodeling of the first floor of the existing Jail. The addition, increasing the Jail's capacity to 876 was completed in the fall of 2007.



Because of a number of laws and administrative codes, the Jail staff must perform many man-hour-intensive tasks relating to inmate property, money, health care, medication, housing, movement, and so on. Jail Management Software allows these tasks to be performed more efficiently. The software also enables Jail staff to develop accurate information concerning inmate demographics and population trends. These statistics will enable staff to make informed assessments and projections of how the facility is used, and by whom.

## Racine County Jail Correctional Emergency Response Team (C.E.R.T.)

The Racine County Sheriff's Office Correctional Emergency Response Team. C.E.R.T. is a specially trained tactical response team that responds to disturbances within the Racine County Jail. The team consists of 15 members including a team commander, an assistant team commander and two team leaders. All correctional staff that has successfully completed their probationary period are eligible to try out for the team. The team receives additional training in disturbance resolutions and use of force situations. C.E.R.T. members have access to and are trained with additional equipment that can be used during disturbance resolution. Types of disturbances that the Correctional Emergency Response team responds to include: cell extractions, dayroom disturbances, riots, or large scale searches, possibly involving uncooperative or violent inmates. C.E.R.T. is based on a team concept where all members work as one unit to achieve a common goal.



## Honor Guard



The Racine County Sheriff's Office Honor Guard consists of 17 sworn members of the Racine County Sheriff's Office. The Honor Guard is called out for funerals for past and present members of the Racine County Sheriff's Office. The Honor Guard serves at these funerals as a show of respect and honor for the deceased Deputy's service as a law enforcement officer to the county and the Racine County Sheriff's Office.

Using special Honor Guard uniforms and equipment, the Honor Guard performs a casket watch during the visitation, performs pall-bearer duties, sets up the squad procession to the burial site, folds and presents the flag to the family, and arranges the rifle salute, bugler, and bagpiper.

The Honor Guard also attends line-of-duty funerals for deceased officers from other law enforcement agencies throughout the State of Wisconsin and adjoining states as a show of respect for the fallen officer, their families and their law enforcement agency.



## Racine County Sheriff's Office Citizen's Academy

The Racine County Sheriff's Citizen's Academy is offered to provide citizens with insight into the organization and operation of the Sheriff's Office. The Academy consists of eight Monday evening classes between 6:00pm – 9:00pm.

Topics covered in the Academy include Patrol Operations, Jail Operations, Investigations, Drug Enforcement, Communications and Special Teams. Each topic will be presented by experienced deputies and investigators. Attendees also have the opportunity to participate in the Sheriff's Office Ride-Along program.





## The Robert L. Rohner Training Center

The Robert L. Rohner Training Center is a joint venture between the FBI, the Racine County Sheriff's Office, and WE Energies. Discussions began during 2003/2004 culminating in a financial commitment by the FBI and WE Energies donating land under the terms of a zero-cost lease agreement. The FBI contributed approximately \$1.5 million for the construction of a building, grounds improvements and a range house to serve the training needs of the FBI, the Racine County Sheriff's Office, and other local police agencies. WE Energies contributed approximately 25 acres of land along with enough clean fill to erect the existing berms on the north end of the range property. The training center is also available to other Racine County law enforcement agencies & Gateway Technical College.



The main building on the training center grounds features traditional classroom space on the main level along with bathrooms, showers, and a locker room. The classroom is equipped with audiovisual technology to accommodate various media formats for training and presentations. The lower level contains additional classroom space with a well-cushioned floor and open space for use in dynamic training. The building is climate-controlled year around.

The training center contains both a pistol range and a rifle range to accommodate the different types of weapons systems typically in use by law enforcement. The pistol range is equipped with a range tower that provides a vantage point for observation and it also serves as a control center for the fully automated target system. The architectural design of the training center along with the incorporated technologies ensure that Racine County Law Enforcement training needs are met well into the future.



## Financial Summary

	2006	2007	2008	2009	2010	2011
Personnel Costs	\$22,133,156	\$22,237,493	\$22,505,974	\$21,278,336	\$20,312,669	\$19,272,807
Operating Expenses	\$3,938,628	\$3,085,639	\$3,519,380	\$3,818,866	\$4,742,674	\$4,460,159
	<b>\$26,071,784</b>	<b>\$25,323,132</b>	<b>\$26,025,354</b>	<b>\$25,097,202</b>	<b>\$25,055,343</b>	<b>\$23,732,966</b>

Revenues						
	2006	2007	2008	2009	2010	2011
General Revenues	\$1,029,791	\$828,352	\$694,977	\$1,143,812	\$840,278	\$1,015,660
Charges for Service	\$1,652,191	\$1,526,789	\$2,749,539	\$2,528,647	\$2,747,911	\$1,929,584
Other Revenue	\$806,917	\$562,696	\$500,671	\$728,404	\$495,267	\$734,490
<b>Total Revenues</b>	<b>\$3,488,899</b>	<b>\$2,917,837</b>	<b>\$3,945,187</b>	<b>\$4,400,863</b>	<b>\$4,083,456</b>	<b>\$3,669,734</b>
Tax Levy	<b>\$22,528,885</b>	<b>\$22,405,295</b>	<b>\$22,080,167</b>	<b>\$20,696,339</b>	<b>\$20,971,887</b>	<b>\$20,063,232</b>

## Promotions

01/03/2011 - Investigator Christopher Schmaling to Sheriff  
04/07/2011 - Agent Scott Krogh to Sergeant  
04/07/2011 - Deputy Brian VanScyoc to Investigator  
04/30/2011 - Corrections Office Antonio Chavez to Corrections Sergeant  
05/16/2011 - Deputy Albert Mihelich to Investigator  
05/16/2011 - Investigator Charles Gehrand to Sergeant  
07/06/2011 - Sergeant James Weidner to Lieutenant  
11/05/2011 - Investigator Daniel Adams to Lieutenant  
11/05/2011 - Deputy Anthony Castillo to Investigator  
12/02/2011 - Corrections Officer Todd Lauer to Corrections Sergeant  
12/17/2011 - Investigator Cary Madrigal to Sergeant  
12/17/2011 - Deputy David Kinservik to Lieutenant  
12/17/2011 - Deputy Jeffrey Chiapete to Investigator  
12/30/2011 - Deputy Aaron Schmidt to Sergeant

## Retirements

02/04/2011 - Senior Clerk Steno Shelia Bowen  
04/06/2011 - Sergeant Robert Kacmarcik  
04/22/2011 - Corrections Officer John George  
04/29/2011 - Sergeant James Stratman  
05/15/2011 - Sergeant William Halliday  
06/14/2011 - Senior Clerk Typist Patricia Hollatz  
07/01/2011 - Deputy Gerald Bates  
09/30/2011 - Senior Clerk Typist Valerie Byrd  
11/04/2011 - Lieutenant Thomas Sweet  
12/01/2011 - Sergeant Charles Richmond  
12/15/2011 - Cook Pamela Rector  
12/16/2011 - Deputy Elmer Baumeister  
12/16/2011 - Cook Carol Stickles  
12/16/2011 - Sergeant Karl Christensen  
12/16/2011 - Lieutenant Kevin Brown  
12/29/2011 - Sergeant Dennis Basley  
12/29/2011 - Deputy Preston Larrabee  
12/29/2011 - Sergeant James Muir  
12/29/2011 - Deputy Rickie Kowalski  
12/30/2011 - Lieutenant Robert Zortman

## Active Military Personnel

Deputy Twyla Clark  
Deputy Kent Milam

## 2011 Sheriff's Awards



### Exemplary Officer Award

Deputy Mark Meisner - 1st  
Deputy Kyle Poelmann - 1st  
Deputy Edward Drewitz - 5th  
Deputy David Kinservik - 6th  
Deputy Scott Litwin - 1st  
Deputy Aaron Schmidt - 2nd



### Award of Excellence

Deputy Elmer Baumeister - 3rd  
Deputy Scott Butler - 2nd  
Deputy Kevin Burke - 2nd  
Deputy Joseph Hansen - 1st  
Deputy Geoffrey Thompson - 3rd



### Distinguished Master Shooting Award

Sergeant Charles Gehrand  
Investigator Jerome Hipper  
Investigator Cary Madrigal  
Deputy Scott Butler  
Deputy Russell Polasky  
Deputy Christopher Tatro



### Certificate of Commendation

Deputy Kevin Burke  
Deputy Jonathan Eckblad  
Deputy Jeffrey Scherer  
Lieutenant Thomas Sweet - 3rd  
Water Patrol - Nathan Poelmann  
Water Patrol - Amanda Scheckles

### Citizen Life Saving Award

Jakob J. Childs  
Michael D. Harrell

### Citizen Public Service Award

Michael D. Harrell

### Bravery Award

Noah Gonzalez

## Acknowledgements

It was with the cooperation of many that this report has come to fruition.

This report represents another year of the Racine County Sheriff's Office history, progress and direction. We are moving forward .

Sincerely

A handwritten signature in black ink, reading "Christopher Schmaling". The signature is written in a cursive style with a large, sweeping initial "C".

Christopher Schmaling  
Sheriff



PIONEERING INTEROPERABILITY THROUGHOUT SOUTHEASTERN WISCONSIN