

# *Racine County Sheriff's Office*

*A Tradition  
Since 1836*



## *2013 Annual Report*

## Table of Contents

Message from the Sheriff .....	3
2013 Organizational Chart .....	4
Mission Statement .....	5
2013 Sheriff's Office Accomplishments .....	6
2013 Sheriff's Administration .....	7
Patrol Operations .....	9
I-94 Corridor C.O.P.S. ....	12
STEU C.O.P.S .....	14
K-9 Unit .....	15
Criminal Investigations Bureau .....	16
Evidence Custodian .....	17
Dive Rescue Team .....	18
Metro Drug Unit .....	20
Water Safety Patrol .....	22
Recreational Patrol .....	23
SWAT Team .....	24
Crisis Negotiation Team .....	26
Crisis Intervention Team .....	27
Administrative Support .....	28
Records Bureau .....	29
Racine County Jail .....	30
Jail Programs .....	32
Jail Revenues .....	34
Jail Population .....	35
Racine County Sheriff's Office CERT Team .....	38
Honor Guard .....	39
Deputy Friendly .....	40
Robert L. Rohner Training Center .....	41
Financial Summary .....	42
Promotions, Retirements & Active Military Personnel .....	43
Sheriff's Awards .....	44
Acknowledgments .....	45

## Sheriff Christopher Schmaling's Message

Greetings:

The Racine County Sheriff's Office is the chief law enforcement agency in Racine County. Our agency has full law enforcement authority throughout the county, including all the towns, villages, and cities, as well as the waters of Lake Michigan. We provide the following specialized functions:

- Metro Drug Unit
- Civil Process Unit
- Consumer Fraud Investigation
- Criminal Investigations Bureau
- Water Patrol
- SWAT Team
- Dive/Rescue Team
- Crisis Negotiators

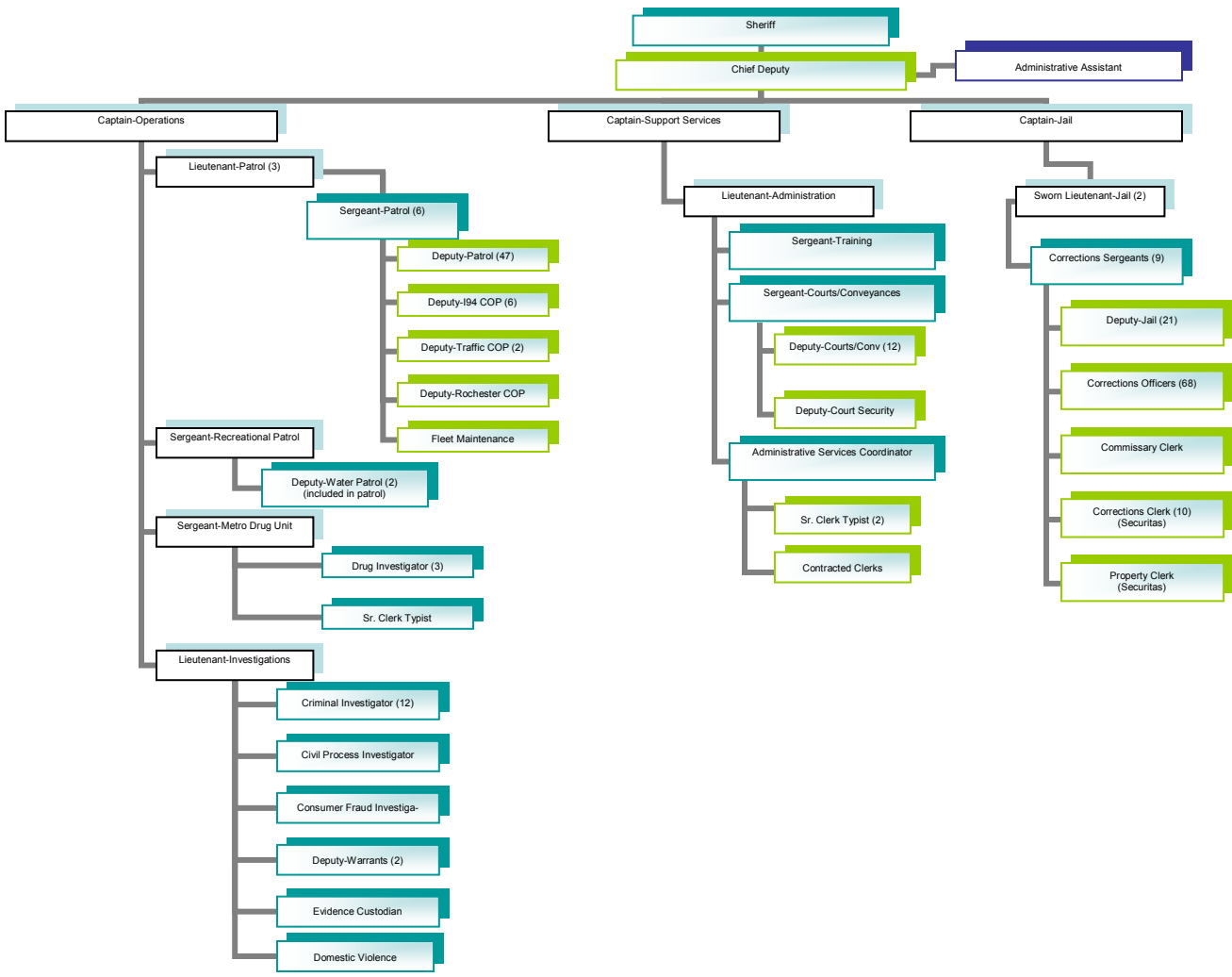
The Sheriff's Office is also responsible for the operation of the Racine County Jail. The jail's rated capacity of 876 persons makes it one of the largest in the state.

The professional staff of our agency remains dedicated to our mission of providing the core services that help maintain public safety, peace, and order in Racine County. We also remain committed to utilizing our resources in the most efficient and responsible manner possible. Our citizens expect these things, and deserve them. It is our great privilege to deliver these services to them.

Sincerely,  
Christopher Schmaling, Sheriff  
Racine County, Wisconsin



# 2013 Organizational Chart Racine County Sheriff's Office



**Racine County Sheriff's Office  
Mission Statement**

In Partnership with the Citizens, and with the cooperation of the communities within Racine County, the mission of the Racine County Sheriff's Office shall be the preservation of public safety, peace and order. This goal shall be met through proper utilization of the available resources in the most efficient manner possible while maintaining the highest levels of professionalism.



## RACINE COUNTY SHERIFF'S OFFICE 2013 ACCOMPLISHMENTS

**Violent Crime**  
33% decrease from  
2012

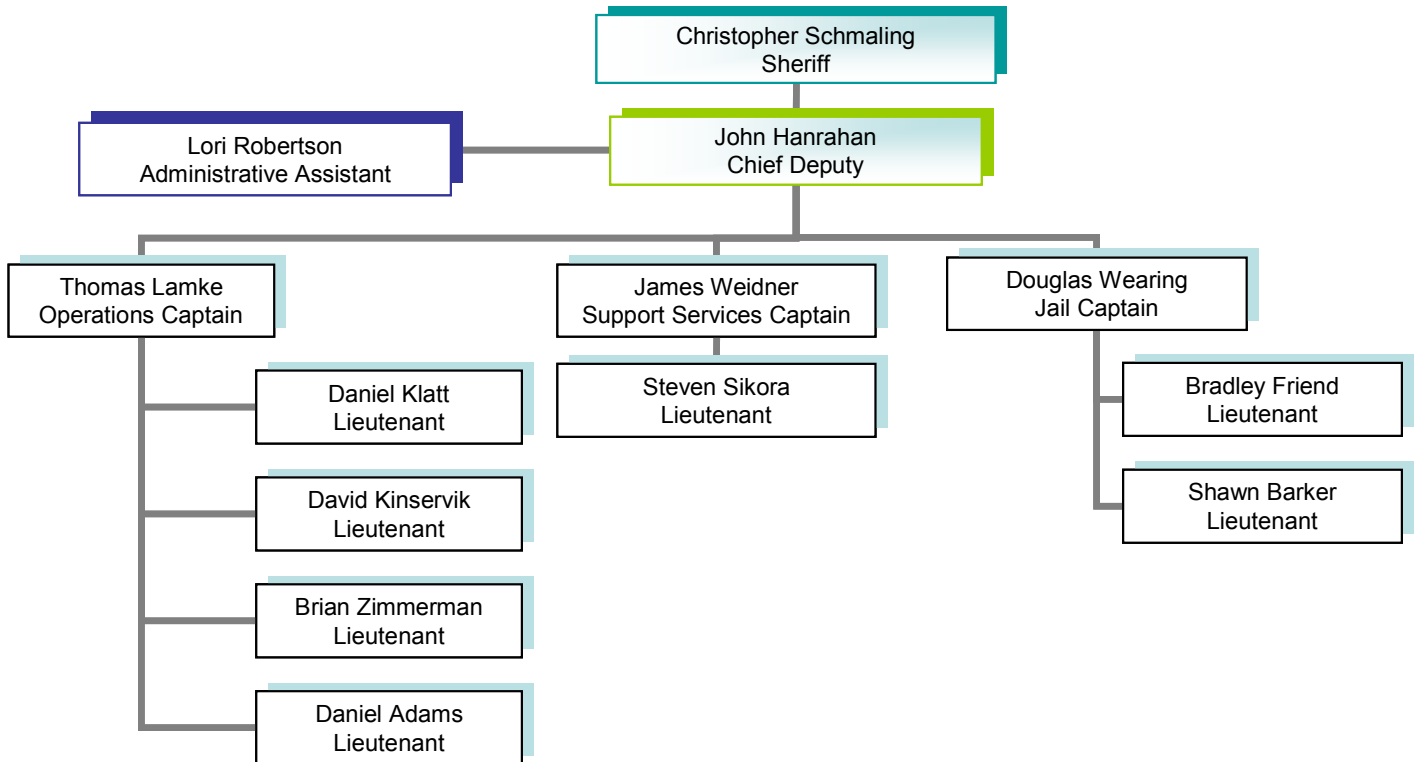
**Property Crime**  
17% decrease from 2012

The Sheriff's Office accepted \$152,750.00 in grant funding in 2013 for the following programs:

- Alcohol enforcement \$30,758
- Speed Enforcement \$17,080
- Seatbelt Enforcement \$17,263
- Justice Assistance Program Grant (Court Security) \$22,887
- HIDTA Award \$38,464
- Domestic Violence RO Enforcement Task Force \$60,916

Uniform Crime Reporting Statistics						
Offenses				Cleared		
Violent Crime	2012	2013	%	2012	2013	%
Murder	1	0	-100%	2	0	-100%
Forcible Rape	3	2	-33.3%	3	0	-100%
Robbery	1	3	200%	1	1	0%
Assault	13	7	-46.2%	13	7	-46.2%
<b>Total</b>	<b>18</b>	<b>12</b>		<b>19</b>	<b>8</b>	
<b>Property Crime</b>						
Burglary	95	77	-18.9%	13	9	-30%
Larceny Theft	387	329	-15%	79	81	2%
Motor Vehicle Theft	27	16	-40.7%	2	5	150%
Arson	0	4	400%	0	4	400%
<b>Total</b>	<b>509</b>	<b>426</b>		<b>94</b>	<b>99</b>	
* Although an increase may have occurred, it is not possible to calculate the percentage change due to a zero amount in the previous year.						

# Sheriff's Administration



## 2013 Sheriff's Administration

The Sheriff's Administration is responsible for the management and direction of the entire Office, and ensures that the Office obtains its goals and objectives.

The Sheriff's Office is a large, dynamic organization with ever-growing responsibilities. The Office is composed of many specialized units.

The Office's Administrative Staff provides support services to all operating units within the Office. Support and administrative services include; creating policy and procedure, handling citizen's complaints, accounting, records, training, communications and clerical support.



Operations Captain Thomas Lamke



Support Services Captain James Weidner



Chief Deputy John Hanrahan



Jail Captain Doug Wearing



## Racine County Sheriff's Office Patrol Operations

The Patrol Operation is supported by the Criminal Investigations Bureau, Metro Drug Unit, Racine County Water Safety Patrol and the Sheriff's K-9 Unit

In any Law Enforcement agency, whether a Sheriff's Office or Municipal Police Department, the backbone of the Office consists of the uniformed Patrol Operations.

The uniformed Patrol Operations of the Racine County Sheriff's Office currently has 72 Deputies and Supervisors who are responsible for Patrol activities in Racine County.

The Sheriff's Office Patrol Operations is the primary patrol operation for many of the Town's and Village's in Racine County, and has shared patrol responsibilities in those jurisdictions with their own full or part-time patrol operation.

The Sheriff's Office also provides contractual services for the Village of Union Grove, the Village of Waterford, the Village of Elmwood Park, the Town of Dover, the Town of Raymond, the Village of Rochester, and the Town of Burlington.

Racine County Traffic Fatalities								
2005	2006	2007	2008	2009	2010	2011	2012	2013
26	21	17	20	7	10	10	6	3

Motorist's disregard for traffic laws contributes directly to injury and fatal accidents. The Racine County Sheriff's Office has taken an aggressive position in efforts to make the roadways in Racine County a safer place to operate motor vehicles.

In 2013, Wisconsin Department of Transportation awarded the Sheriff's Office \$30,758 for participation in the alcohol enforcement program.



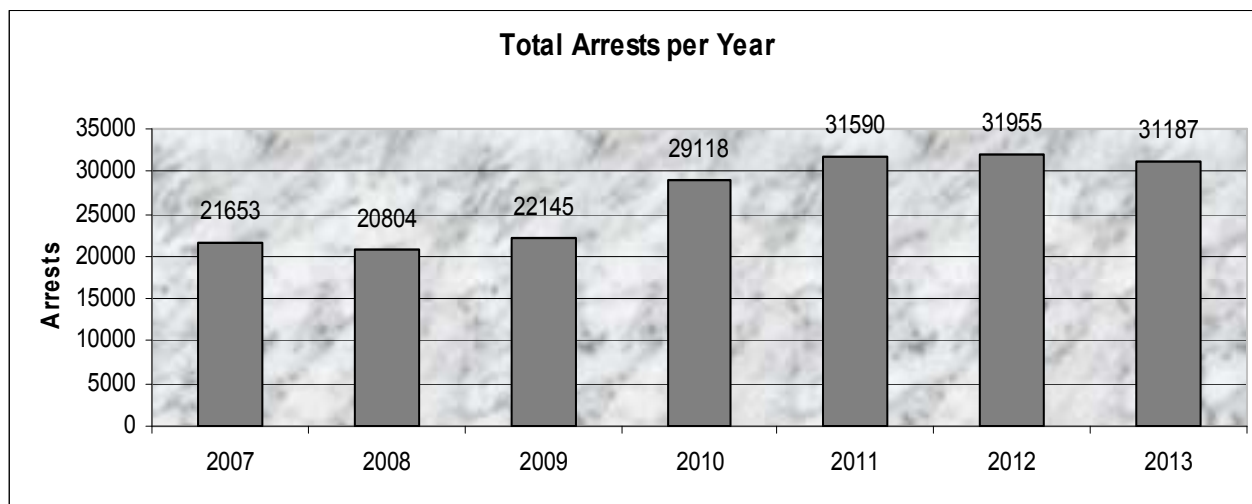
Racine County Sheriff Patrol Operations Statistics							
	2007	2008	2009	2010	2011	2012	2013
Total Miles Driven:	1,112,775	725,033	653,420	728,340	821,730	1,184,677	888,274
Total Hours Worked:	77,740	70,216	67,750	79,096	85,534	88,067	80,541

Complaint Activity							
	2007	2008	2009	2010	2011	2012	2013
Complaints Assigned:	17,139	14,619	13,704	14,683	14,410	15,256	14,917
Deputy Originated:	7,925	6,295	6,974	7,592	10,540	22,007	24,332
Complaint Follow Up	17,177	14,318	13,719	14,948	16,882	14,360	11,568
Complaints Assisted	5,163	4,509	3,943	4,966	5,369	6,029	5,093
<b>Total Complaints</b>	<b>47,404</b>	<b>39,741</b>	<b>38,340</b>	<b>42,189</b>	47,201	57,652	55,910

Other Enforcement							
	2007	2008	2009	2010	2011	2012	2013
Warnings	4,368	4,118	3,868	4,455	5,468	7,786	9,074
Arrest Warrants	1,090	1,143	1,047	718	932	736	715



## 2013 Arrests Statistics



<b>Patrol Arrest Activity</b>							
	2007	2008	2009	2010	2011	2012	2013
Speeding Citations	8,301	5,519	7,746	11,310	9,914	8,183	9,709
Other Traffic Violations	6,461	7,258	7,653	9,677	11,650	12,250	12,252
OWI	445	332	302	298	313	335	331
Citations from Crashes	540	505	403	429	466	381	414
Parking	1,337	1,679	1,417	1,268	1,048	1,146	1,236
Felonies	187	159	123	163	124	155	183
Misdemeanor Arrests	846	717	662	625	708	1,042	945
Ordinance Arrests	791	770	799	732	638	677	659
<b>TOTAL PATROL ARRESTS</b>	<b>20,915</b>	<b>18,947</b>	<b>21,114</b>	<b>26,512</b>	<b>26,872</b>	<b>26,181</b>	<b>25,729</b>

## 2013 I-94 Corridor C.O.P.S.

The Racine County Sheriff's Office has created the I-94 Corridor Patrol. Officers aggressively patrol the Interstate as well as property locations within one mile of I-94 in efforts to make the roadways and businesses in Racine County a safer place to operate motor vehicles and conduct commercial operations. The operation is in its eleventh year of operation, and has made a significant impact on traffic safety in Racine County, reducing serious injury accidents from non corridor patrol years.

<b>2013 I-94 Corridor C.O.P.S. Activity</b>	
Base Fine	\$656,394.00
Citation Fine	\$197,392.20
Speeding Citations	3,775
Miscellaneous Other Arrests / Citations	
OWI Arrests	21
Driver's license violations	454
Registration violations	544
Restraint violations	135
Insurance Violations	869
Weapons Violations	6
Felony Arrests	24
Misdemeanor Arrests	162
Forfeitures	57
Warnings	31
Property Damage Accidents	15
Personal Injury Accidents	2

Service of Warrants	115
Drug Arrests	45

<b>Drugs seized 2013 (I94 Corridor)</b>	
THC	179.9 grams
Cocaine	15.5 grams
Heroin	1.9 grams
Schedule II, IV, V Drugs	4 tabs
Schedule III Drugs	0 milligrams
Pills (non-schedule)	90 tabs

<b>2002-2013 I-94 Corridor Activity Summary</b>	
Speed violations	65,963
OWI	696
Driver's license violations (2003-2013)	12,491
Registration violations (2003-2013)	12,296
Restraint violations (2003-2013)	4,628
Weapons violations	217
Warrants/Commitments	3,885
*Other arrests/citations include: Following too closely, Unreasonable & imprudent speed, Unsafe lane deviation, Fail to signal, Too fast for conditions, Equipment violations, Failure to obey sign or signal, Improper plates, Overweight, Operating left of center, Reckless driving, Racing, Window tint.	

<b>2002-2013 Drugs seized (I-94 Corridor)</b>	
THC	46,080.29 grams or 101.56 pounds
Heroin	166.2 grams or .366 pounds
Cocaine	27,365.8 grams or 60.33 pounds
Other drugs	463.1 grams or 1.20 pounds of Ecstasy, 1,068 tabs/pills of various controlled pills/ schedule II and schedule IV 46.2 grams Psilocybin

<b>2002-2013 Cash seized</b>	<b>\$532,486</b>
------------------------------	------------------

<b>2002-2013 citations/arrests:</b>	<b>118,889</b>
-------------------------------------	----------------

## STEU C.O.P.S.

In 2010, two new C.O.P. positions were created to function as a specialized traffic enforcement unit with a concentration on state and county highway traffic enforcement.

2013 STEU Statistics	
Base Fine	\$229,882.00
Total Citation Bond	\$672,999.10
Total Warrant Bond	\$124,199.20
Total Traffic Citations	2,922
Ordinance Citations	58
Misdemeanor Arrests	30
Felony Arrests	35
Weapons Violations	0
Total Drug Arrests	41
Total THC Weight	105.25 Grams
Total Cocaine Weight	672.35 Grams
Total Heroin Weight	11.85 Grams
Total Cash Seized	\$15,846.00



## Racine County Sheriff's Office K-9 Unit

In 1999, the Racine County Sheriff's Office began its first Canine unit. With the generous support of many businesses and citizens, the program was launched. With participation from the Racine County Deputy Sheriff's Protective Association a handler was selected and K-9 DAX began service. After the retirement of K-9 DAX, K-9 Gingiss was placed into service in June of 2005. In 2013, K-9 Gingiss passed away after a brief illness.

In 2011, a donation of more than \$14,000.00 was made to the Sheriff's Office to add an additional K-9 to the Sheriff's Office K-9 unit in 2012. K-9 Friday was placed into service in May of 2012. Friday is a Belgian Malinois/German Sheppard mix. Friday is also a dual purpose K-9, trained in narcotics detection, tracking, building and area searches, and articles and evidence searches. Friday is partnered with Deputy Edward Drewitz. Deputy Drewitz and Friday have made numerous criminal and narcotics arrests since beginning their duty.

In 2013, additional donations were received, and the Sheriff's Office was able to add two K-9's to the K-9 unit. K-9 Nitro and K-9 Murphy were placed into service in November 2013. Both are Belgian Malinois's, and both are dual purpose K-9's, trained in narcotics detection, tracking, building and area searches, and articles and evidence searches. Nitro is partnered with Deputy Troy Ruffalo and Murphy is partnered with Deputy David Fisher. They trained together in North Carolina for 6 weeks.



Deputy Drewitz and K-9 Friday



Deputy Ruffalo and K-9 Nitro



Deputy Fisher and K-9 Murphy



Deputy Clemens and K-9 Nox

## Racine County Sheriff's Office Investigative Bureau

The Racine County Sheriff's Office Investigative Bureau was comprised of 1 Lieutenant and 14 Investigators. One Investigator is assigned to Civil Process and one is assigned to Consumer Fraud Investigations.

The Investigative Bureau has a number of specialized units staffed by highly trained and skilled Investigators.

- Sexual Assault
- Child Abuse
- Burglary & Theft
- Arson Investigations
- White Collar & Financial Crimes
- Internet Crimes
- Traffic Investigations
- Consumer Fraud
- Death Investigation
- Street Gangs



<b>2013 Criminal Investigation Activity Summary</b>		
Classification	Total calls for Service	Calls investigated by Bureau
Thefts	545	151
Burglaries	103	58
Sex Offenses	106	82
Physical Assaults	150	28
Fraud	164	50
Robberies	3	2





## Racine County Sheriff's Office Evidence Custodian

The Racine County Sheriff's Office Evidence Custodian is responsible for the proper collection, identification, and preservation of evidence collected by Deputies and Investigators.

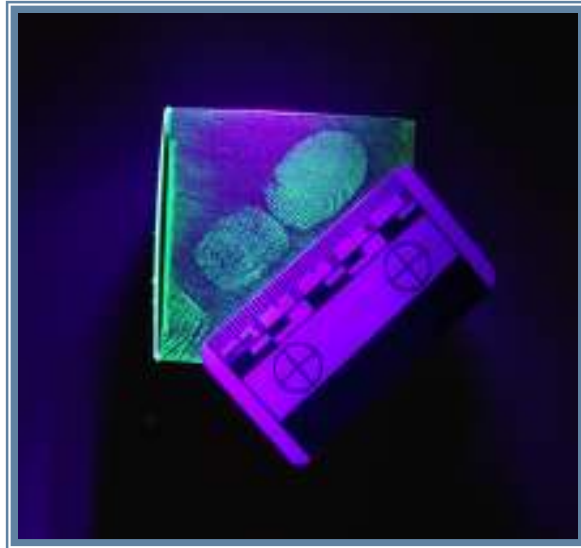
In 2013,  
3,796 items of  
evidence were  
inventoried

The Evidence Custodian maintains the 'chain of custody' of evidence that may be sent to the Crime Lab for analysis.

Collection and processing of evidence is a constantly changing field that demands the Office be current in the latest technological procedures. Our Evidence Custodian and Investigators are highly involved in learning new processes and proper technique for evidence collection.

In 2013, 339 items were returned to the rightful owner or disposed of, 53 vehicles were processed, 152 items were taken to the Crime Lab for analysis.

In addition to evidence of criminal activities, 182 blood samples of potential OWI situations were processed through the always-busy Evidence Section and the Wisconsin State Hygiene Lab/Crime Lab.



## Racine County Sheriff's Office Dive Rescue Team

The Racine County Sheriff's Office Dive Rescue Team is a member of the Racine County Dive Team (RCDT) which operates under the Mutual Aid Box Alarm System Agreement ("MABAS") Division 102 under the authority and oversight of the Sheriff. RCDT members are comprised of public safety agencies within Racine County including Sheriff's Deputies and Corrections Officers, Fire, Rescue and EMS personnel. RCDT members include rescue/recovery divers, surface rescuers and shore/boat support personnel. At the present time, the RCDT has approximately 60 members.



The primary function of the RCDT is to make every reasonable attempt to save any person that may be drowning or has disappeared under the surface of any body of water within Racine County.

Additionally, the RCDT will make every reasonable effort to recover the body of any person that has been declared a drowning victim in any body of water within Racine County. The team also responds for evidence recovery operations and provides safety for water related events throughout Racine County.

Because the RCDT is comprised of multiple agencies with numerous specialized assets and personnel, it is considered a regional response team and has assisted other agencies of Southeastern Wisconsin and Illinois with their waterborne operations.

RCDT member agencies schedule intensive practical trainings each month and open their respective trainings to other member agencies. All active divers must have a minimum of an advanced certification through a professionally accredited SCUBA certification agency.

The RCDT has also obtained specialized equipment to make underwater searches safer and faster. This includes an underwater towable video system, diver to diver underwater communications, surface supplied air system, and a diver to surface video system. Rescue boats are staged east and west of I-94 for rapid deployment to any body of water in Racine County.

Many RCDT members have taken continuing education courses and are certified in such specialties as: Advanced Open Water, Rescue Diver 1 & 2, Medical Dive Specialist, Ice Diver, Wreck Diver, Night Diver, Computer Diver, Deep Diver, Cave Diver, Equipment Repair Specialist, Swift Water Rescue, Underwater Investigator, Underwater Death Investigator, Nitrox Diver, Staged Decompression Diver, Advanced Tri-Mix Diver, Advanced Gas Blender, Dive Master, and Dive Instructor.

**The Racine County  
Sheriff's Office Dive  
Rescue Team  
completed 666 Hours  
of Proficiency Training  
in 2013**

## Racine County Sheriff's Office Dive Rescue Team

<b>Dive Team – 2013 Calls for Service</b>	
<b>Rescues</b>	<b>2</b>
Possible Drownings	<b>1</b>
Evidence Recovery	<b>1</b>
Obstruction Removal	<b>1</b>
Assisting Other Jurisdictions	<b>6</b>
Water Safety Events	<b>1</b>
Public Relations Events	<b>13</b>
Additional Training Events	<b>2</b>



## Racine County Sheriff's Office Metro Drug Unit

Three Investigators, one supervising Sergeant, and a part time Secretary currently staff the Racine County Metro Drug Unit. All members of the METRO Drug Unit are Sheriff's Office personnel.

The Metro Drug Unit executed 83 search warrants during 2013

The Unit was created to provide a coordinated and comprehensive effort to investigate and arrest those who engage in the trafficking of illegal drugs within Racine County. The Unit works closely with the FBI, IRS, DEA and the Federal Prosecutors Office, as well as other State and local law enforcement agencies such as SEADOG, a 5-county information and intelligence sharing cooperative.

During 2013, there were 1,050 arrests made for various drug charges in Racine County. Of those arrested, 97 are juveniles. There were 545 Felony charges, 346 Misdemeanors, and 62 Ordinance violations.

2013 Metro Drug Activity - Seizures		
Substance	Quantity	Street Value in US Dollars
<b><u>Aderrall</u></b>	140 tbls	730.00
<b><u>Alprazolam</u></b>	177 tbls	885.00
Cocaine	1177.4 grms	117,740.00
Crack Cocaine	440.7 grms	30,849.00
Heroin	89.4 grms	17,880.00
<b><u>Hydrocodone</u></b>	230 tbls	1,150.00
Marijuana – THC	33117.2 grms	331,172.00
Marijuana Plants	274	274,000.00
Xanax	106 tbls	530.00
Oxycontin	2 tbls	20.00
<b><u>Oxycodone</u></b>	975 tbls	26,890.00
<b><u>Misc Tablets</u></b>	2977 tbls	14,885.00
<b><u>Total</u></b>		<b>\$816,731.00</b>



## Metro Drug Unit Statistics

Metro Drug Unit						
Felony Charges	2008	2009	2010	2011	2012	2013
	250	366	373	454	457	545

Metro Drug Unit						
Search Warrants	2008	2009	2010	2011	2012	2013
	48	39	75	87	88	83



## Racine County Sheriff's Office Water Safety Patrol

The Racine County Sheriff's Office continues to operate the Water Safety Patrol on Lake Michigan and on inland lakes and rivers throughout Racine County. The Water Safety Patrol operates from April 1<sup>st</sup> until about the second week of November. During the summer months, Water Safety Patrol Deputies are assisted by approximately 5 college student summer employees.



The Water Safety Patrol continues to be partially funded by the Department of Natural Resources. Annually, up to 17% of the costs of operating the Water Safety Patrol are reimbursed to Racine County.

The Racine County Sheriff's Water Safety Patrol responds to assist boaters for a variety of incidents, including accidents, engine failures, and rescue as well as enforcement activities.

Water Safety Patrol Calls for Service 2013	
Assist Other Jurisdiction	1
Boat Accident	3
Reported Drowning	1
Hazard to Navigation	33
Boating Violations	23
Vessel in Distress	36
Boat Inspections	43
<b>TOTAL CALLS FOR SERVICE</b>	<b>176</b>
<b>TOTAL PERSONS ASSISTED</b>	<b>88</b>



## Racine County Sheriff's Office Recreational Patrol



## Racine County Sheriff SWAT Team

The Racine County Sheriff's Office SWAT team is comprised of deputies from the patrol division, investigators and supervisors from all areas of the Sheriff's Office.

Team members train regularly to assist Racine County Law Enforcement agencies with serving high risk warrants, fugitive apprehensions and resolving barricaded subject and hostage situations.





## Racine County Sheriff SWAT Team



Regular hands on and classroom training combined keeps team members skills at the level needed to safely operate in these high risk scenarios.



## Racine County Sheriff Crisis Negotiation Team (CNT)

The Racine County Sheriff's Office Crisis Negotiation Team (CNT), consists of 12 sworn members of the Sheriff's Office. The CNT responds to calls from the Patrol Division for assistance with barricaded subjects, hostage situations, domestic abuse calls, and other calls requiring specialized training in resolving dangerous situations safely and peacefully through verbal skills.



All the CNT members have received continuous training through the FBI, State of Wisconsin Crisis Negotiators Association, Wisconsin DCI, and Wisconsin D.O.C. The CNT also trains locally throughout the year using scenario training with other teams, and with the Racine County Sheriff's Office SWAT Team.



## Racine County Crisis Intervention Team

Racine County started the current C.I.T. program in the April 2009 through the assistance of then County Executive McReynolds and the local branch of NAMI (National Alliance of Mental Illness) who saw a need to train local members of the Law Enforcement Community who were responding to calls for service involving those suffering from a mental disorder or in crisis.

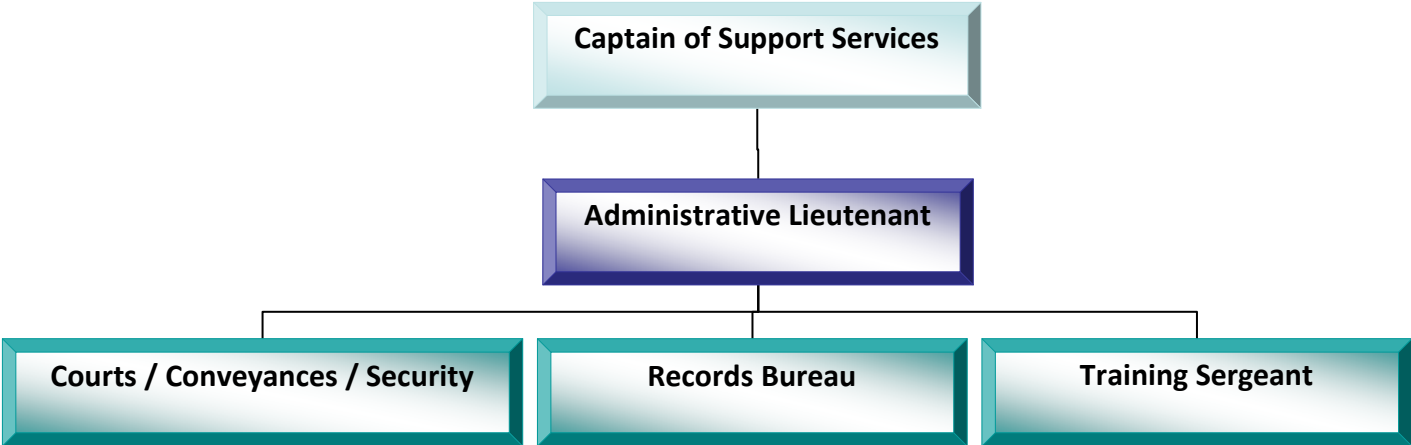
Since the program's inception in Racine County, we have had 8 classes graduate consisting of officers from every Law Enforcement Agency throughout Racine County; approximately 220 Officers have completed the 40 hour course.

Officers attending this course of study learn from local experts in the field of mental health and from consumers themselves on ways of better handling their crisis at the time of the call. In short, the CIT works to find better, safer ways to handle these calls.

The Racine County C.I.T. program, partnered with C.I.P. (Crisis Intervention Partner), conducts two 16-hour classes a year geared towards dispatchers, nurses, fire personnel, corrections, HSD and others dealing with people suffering from a mental disorder or in crisis, with approximately 400 trained as of December 31, 2013.



# Administrative Support



## Racine County Sheriff's Office Records Bureau

The Records Bureau is responsible for all records generated by patrol, investigative, and jail personnel in the normal course of their duties. These records include incident reports, accident reports, citations, photographs, video tapes, investigative reports, jail records, and any other documents related to these records kept during the normal course of business.

In 2013,  
1,119 Sheriff's  
Foreclosure Notices  
were received, an  
decrease of 20.3%  
from 2012

Filing, data entry of pertinent information, and storage are the main functions involved with maintaining the records. Arrest paperwork is collected, processed, and disseminated to the courts and District Attorney's Office as appropriate. The Records Bureau also maintains inactive jail files, fingerprint cards, and mug shots as part of its centralized records and identification functions. Records are warehoused for seven years prior to the destruction process set forth by Racine County. Some records, due to their nature, are kept past the seven-year period with no possibility of destruction.

Civil Process clerical functions are handled by Records Bureau personnel. This includes data entry, tracking, processing necessary documents, and collecting fees due.

Records clerks perform data entry, fingerprinting and photographing of non-custody defendants, sex offender registrants, juveniles arrested, and applicants and citizens requiring special licenses or certifications. This function utilizes jail management software and is interfaced with the State of Wisconsin Crime Information Bureau for electronic submission of fingerprints.

Records Bureau personnel respond to a wide range of requests for information and records from the general public, news media, attorneys and prosecutors, other law enforcement agencies, courts, and departmental employees. Crime statistics and arrest and accident report information is filed with the proper State and Federal agencies. Criminal record checks and requests filed under WI Open Records Law are date sensitive and are handled as high priorities.

Currently, the Records Bureau staff includes one supervisor and three full-time clerks and two part-time clerks. Office hours are from 8:00 AM until 4:30 PM, Monday through Friday excluding legal holidays.

Currently, the Administrative Services Coordinator is responsible for software application administration for dispatch and records management. This includes troubleshooting, training, drafting and implementation of procedures, and quality control for data entry functions. The Supervisor interacts with other networked agencies for software procedures and implementation.

## The Racine County Jail

The Racine County Jail is located at 717 Wisconsin Avenue in downtown Racine. It is part of the Racine County Law Enforcement Center that opened in 1981. At the time the “new” jail opened, inmate capacity numbered 144. Today, after several expansion and double bunking projects, the jail’s capacity is 876 inmates.

Wisconsin State Statute 59.27 requires the Sheriff of each County to “Take the charge and custody of the jail maintained by the County and the persons in the jail, and keep the persons in the jail personally or by a Deputy jailer.”

Racine County employs a combination of sworn Deputy Sheriffs and civilian Correction Officers to satisfy this mandate. Jail support staff includes cooks and clerk typists.

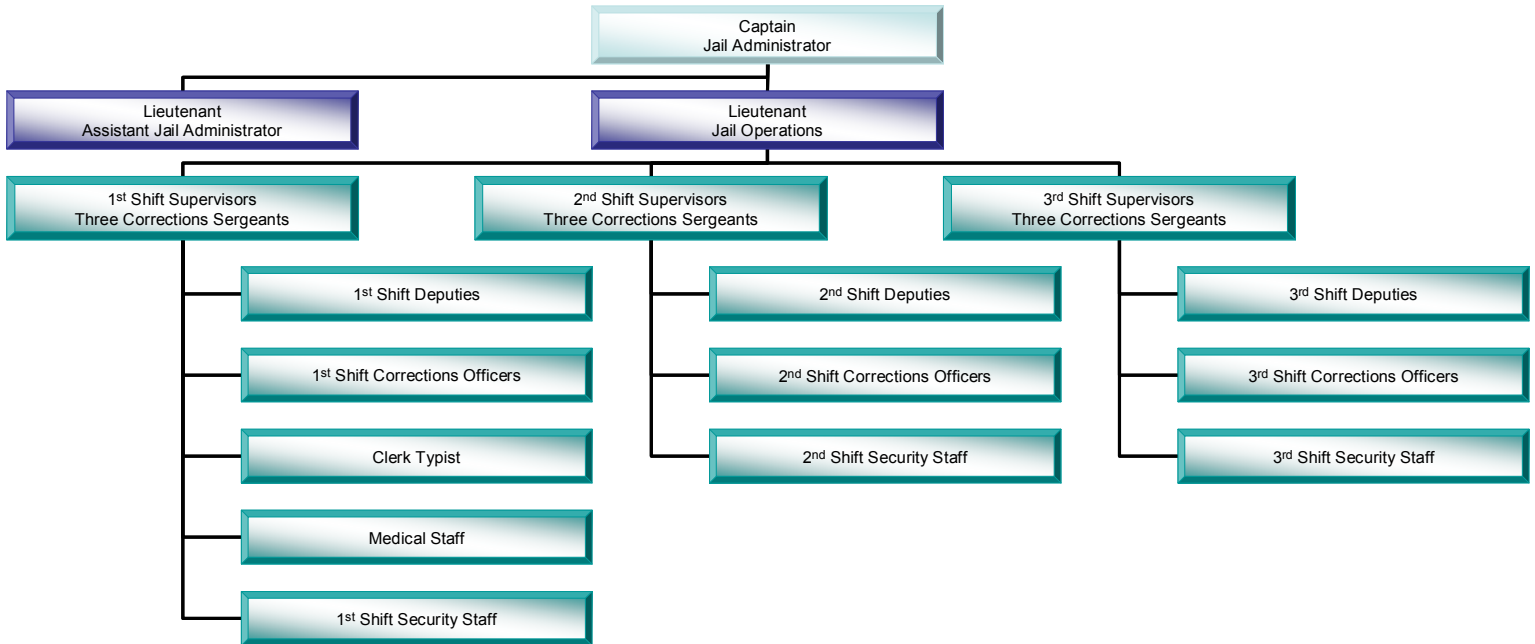
**18 Deputies**  
**9 Corrections Sergeants**  
**65 Corrections Officers**  
**1 Clerk typist**

The Mission of the Racine County Jail is to safely, securely and humanely detain all persons admitted to the facility. To attain this mission, all staff receives professional training in modern corrections practices, and are expected to be in compliance with formal policies, procedures, and rules that guide them in the performance of their duties.

In addition to maintaining a safe and secure facility, the jail is obligated to provide for the medical, religious, and educational needs of its inmates. Religious and educational needs are met through the Racine county Jail Chaplaincy Program. The Racine County Jail is committed to providing programs that aim to serve inmate’s needs and the needs of the community.



# Racine County Jail Staff





The logo features the word "JAIL" in large, bold, blue-outlined letters with a yellow-to-blue gradient fill. A white dove is positioned behind the letter "A". Below the logo, the text "Racine County Jail Chaplaincy" is written in a blue, serif font.

# Racine County Jail Chaplaincy

## Jail Chaplaincy Program

The Chaplaincy Program maintains a web site at:  
[www.racinecounty.com/chaplain](http://www.racinecounty.com/chaplain)

The Jail Chaplaincy Program provides a number of services and programs for inmates who request to be involved.

Chaplaincy programs include:

- Bible Study, including Spanish and Catholic studies
- Alcoholics Anonymous meetings
- One on One mentoring
- High School
- Life Skills – Basic skills in good living
- Pre-Release Assistance – how to obtain clothing, food, etc.
- Self Esteem – Better understanding who you are / who you want to be
- Anger Management – Men & Women
- Communications – learning to express yourself better
- Story Time – a DVD of a parent reading a story to their child
- Issues – Women only
- Domestic Violence – Women
- Library Services
- Drug Abuse Counseling
- Worship Services
- Post Release Support @ 262-898-8585



## Other Inmate Programs



There are other programs provided to inmates in addition to those of the Jail Chaplaincy. The Jail provides a comprehensive in-house **AODA Treatment Program**, started in June of 1998. The AODA Treatment Program has two main components: a 30-day in-Jail element and a nine month post Jail aftercare module.

The housing configuration allows up to twenty inmates, both male and female, to receive treatment during the in-house portion. This is an intensive segment administered by certified AODA professionals. It lasts for approximately thirty days and runs from 7:00 AM until 10:00 PM seven days a week, including holidays.

The aftercare phase is nine months long and is a holistic service integrating housing, employment and other community outreach assistance, as well as continued alcohol and drug counseling. Inmates are admitted to aftercare after successful completion of in-house treatment and staying of their sentences by the sentencing court. If the inmate successfully completes the aftercare phase, the stayed sentence becomes time served.



The Jail's **Inmate Worker Program** and **Community Work Service Program** allow approved inmates to earn reductions in their sentences. Inmate Worker participants work in the Jail kitchen and laundry, as well as performing janitorial work throughout the Jail interior. There is also an inmate worker crew that specializes in the painting of the jail and performing other needed more specialized cleaning in the jail. Community Work Service participants work for non-profit community groups. In each program, the goals are to have the inmates provide useful service to the community and reduce Jail bed days. Community Work Service

inmates also shovel the sidewalks of the LEC and Court House, fill sandbags (when needed), and mow the grass medians on the counties highways.

## Jail Revenues

The Racine County Jail generates revenue from a number of sources, which are detailed in the table below.

Revenue Source	2007	2008	2009	2010	2011	2012	2013
SPO Holds	\$206,752	\$219,900	\$267,630	\$268,633	\$207,774	\$246,970	\$228,143
Comm. Sales	\$127,797	\$145,778	\$144,770	\$184,740	\$267,829	\$261,048	\$267,188
Bed Rentals	\$20,121	\$1,203,083	\$1,224,902	\$895,507	\$331,349	\$323,117	\$356,155
Inmate Phones	\$543,342	\$450,815	\$364,473	\$400,511	\$296,808	\$323,238	\$317,583
Other Municipalities	\$103,161	\$121,172	\$138,919	\$163,431	\$141,266	\$136,884	\$121,992
Huber Law	\$356,668	\$315,177	\$229,502	\$238,464	\$290,332	\$271,743	\$255,035
SS Reimbursement	\$41,600	\$40,600	\$47,600	\$56,800	\$65,000	\$69,600	\$51,000
Dept of Public Instruction Detention Lunch	\$91,564	\$91,316	\$77,395	\$58,875	\$60,804	\$36,613	\$56,525
<b>Totals</b>	<b>\$1,491,005</b>	<b>\$2,587,841</b>	<b>\$2,495,201</b>	<b>\$2,266,961</b>	<b>\$1,661,162</b>	<b>\$1,346,096</b>	<b>\$1,653,621</b>



## Jail Population

Persons are admitted to the Racine County Jail for numerous reasons. Some of the causes are:

- Sentenced Inmates (Huber and General Population)
- Pre-trial detainees
- State Probation Holds
- Holds for other jurisdictions
- Returned on Writs

The jail population increased significantly during the last decade, but has been declining since 2009. The average daily population is shown below.

	2007	2008	2009	2010	2011	2012	2013
Jan	698	751	766	770	698	655	676
Feb	662	783	777	747	679	651	689
Mar	662	778	794	720	672	646	698
Apr	684	762	801	663	689	631	644
May	725	769	788	662	693	691	658
June	749	775	793	684	689	689	654
July	768	772	806	678	688	669	683
Aug	758	834	792	702	715	681	676
Sept	773	830	816	731	709	716	734
Oct	758	825	815	717	678	713	716
Nov	739	814	773	694	681	687	696
Dec	701	759	762	650	674	666	662
<b>Average</b>	<b>723</b>	<b>788</b>	<b>790</b>	<b>702</b>	<b>689</b>	<b>675</b>	<b>682</b>



## Racine County Jail Admissions

2007	2008	2009	2010	2011	2012	2013
11,624	11,118	10,642	9,712	9,688	9,275	9,144

## Average Length of Stay in Days

2007	2008	2009	2010	2011	2012	2013
22.7	25.6	26.7	29.2	27.4	26.4	29.3

## Bed Days Saved by Program

	2007	2008	2009	2010	2011	2012	2013	TOTAL
AODA Program	7544	7553	7565	8820	8412	8772	8466	57,132
Employment Program	7519	6478	7990	8822	6935	4796	4796	47,336
Day Reporting Center	8033	8067	11006	13982	12858	12239	12621	78,806
Treatment Court	1135	2600	2080	1040	1820	2080	2600	13,355
Community Service		631	1000	1266	996	812	665	5,370
Inmate Workers		3464	6000	2757	2798	2637	2145	19,801
<b>TOTAL</b>	<b>24,231</b>	<b>28,793</b>	<b>35,641</b>	<b>36,687</b>	<b>33,819</b>	<b>31,336</b>	<b>33,939</b>	<b>224,446</b>



In order to accommodate the increased demands on the Jail's space, the entire living facility area was double bunked in a renovation project completed in 1998.

The Sheriff's Office has implemented AODA, Children First and Community Work Service programs so that more Jail bed days could be saved. The Sheriff and Jail management have continued to explore ways to relieve crowding, including the implementation of a Day Reporting Center in early 2001.

In 2006, the County Board approved a Jail construction project that included additional dormitory style housing for inmates, a new intake area, a new vehicle sally port and remodeling of the first floor of the existing Jail. The addition, increasing the Jail's capacity to 876 was completed in the fall of 2007.



Because of a number of laws and administrative codes, the Jail staff must perform many man-hour-intensive tasks relating to inmate property, money, health care, medication, housing, movement, and so on. Jail Management Software allows these tasks to be performed more efficiently. The software also enables Jail staff to develop accurate information concerning inmate demographics and population trends. These statistics will enable staff to make informed assessments and projections of how the facility is used, and by whom.

## Racine County Jail Correctional Emergency Response Team (C.E.R.T.)

The Racine County Sheriff's Office Correctional Emergency Response Team. C.E.R.T. is a specially trained tactical response team that responds to disturbances within the Racine County Jail. The team consists of 15 members including a team commander, an assistant team commander and two team leaders. All correctional staff that has successfully completed their probationary period are eligible to try out for the team. The team receives additional training in disturbance resolutions and use of force situations. C.E.R.T. members have access to and are trained with additional equipment that can be used during disturbance resolution. Types of disturbances that the Correctional Emergency Response Team responds to include: cell extractions, dayroom disturbances, riots, or large scale searches, possibly involving uncooperative or violent inmates. C.E.R.T. is based on a team concept where all members work as one unit to achieve a common goal.



## Honor Guard

The Racine County Sheriff's Office Honor Guard consists of 12 sworn members of the Racine County Sheriff's Office. The Honor Guard is called out for funerals for past and present members of the Racine County Sheriff's Office. The Honor Guard serves at these funerals as a show of respect and honor for the deceased Deputy's service as a Law Enforcement Officer to the county and the Racine County Sheriff's Office.



Using special Honor Guard uniforms and equipment, the Honor Guard performs a casket watch during the visitation, performs pall-bearer duties, sets up the squad procession to the burial site, folds and presents the flag to the family, and arranges the rifle salute, bugler, and bagpiper.

The Honor Guard also attends line-of-duty funerals for deceased officers from other law enforcement agencies throughout the State of Wisconsin and adjoining states as a show of respect for the fallen officer, their families and their law enforcement agency.



## Deputy Friendly Program

The Deputy Friendly program has been very successful for many years. Every year, Deputy Friendly, Deputy Tim Graves, reaches out to thousands of children attending schools located throughout Racine County.

Deputy Friendly's objectives are:

- To provide students with the opportunity to develop an intelligent understanding of his or her rights, responsibilities and obligations as a junior citizen
- To establish a link between students of our communities and uniformed Law Enforcement Officers
- To develop a respectful image of the Sheriff's Office in the minds of students
- To provide a role model that is looked up to with respect



During 2013, Deputy Friendly was involved in the following:

- Visiting preschools and day care centers
- Managing the annual Deputy Friendly Awards Contest
- Bicycle Rodeos
- Safety Town USA Instructor
- Child Passenger Safety Technician
- Tobacco Abatement Program
- Alcohol Awareness Program
- Visit elementary schools in Racine County, educating kindergarten through second grade students on a variety of topics: the job of a police officer, gun safety, stranger awareness, bicycle safety, pedestrian safety and passenger safety
- Visit children in local hospitals and shelters with the Easter Bunny – provide Easter baskets





## The Robert L. Rohner Training Center

The Robert L. Rohner Training Center is a joint venture between the FBI, the Racine County Sheriff's Office, and WE Energies. Discussions began during 2003/2004 culminating in a financial commitment by the FBI and WE Energies donating land under the terms of a zero-cost lease agreement. The FBI contributed approximately \$1.5 million for the construction of a building, grounds improvements and a range house to serve the training needs of the FBI, the Racine County Sheriff's Office, and other local police agencies. WE Energies contributed approximately 25 acres of land along with enough clean fill to erect the existing berms on the north end of the range property. The training center is also available to other Racine County Law Enforcement agencies & Gateway Technical College.



The main building on the training center grounds features traditional classroom space on the main level along with bathrooms, showers, and a locker room. The classroom is equipped with audiovisual technology to accommodate various media formats for training and presentations. The lower level contains additional classroom space with a well-cushioned floor and open space for use in dynamic training. The building is climate-controlled year round.

The training center contains both a pistol range and a rifle range to accommodate the different types of weapons systems typically in use by law enforcement. The pistol range is equipped with a range tower that provides a vantage point for observation and it also serves as a control center for the fully automated target system. The architectural design of the training center along with the incorporated technologies ensure that Racine County Law Enforcement training needs are met well into the future.



## Financial Summary

	2007	2008	2009	2010	2011	2012	2013
Personnel Costs	\$22,237,493	\$22,505,974	\$21,278,336	\$20,312,669	\$19,272,807	\$19,342,753	\$18,876,466
Operating Expenses	\$3,085,639	\$3,519,380	\$3,818,866	\$4,742,674	\$4,460,159	\$4,444,938	\$5,987,868
<b>TOTAL</b>	<b>\$25,323,132</b>	<b>\$26,025,354</b>	<b>\$25,097,202</b>	<b>\$25,055,343</b>	<b>\$23,732,966</b>	<b>\$23,787,691</b>	<b>\$24,864,334</b>

Revenues							
	2007	2008	2009	2010	2011	2012	2013
General Revenues	\$828,352	\$694,977	\$1,143,812	\$840,278	\$1,015,660	\$1,081,354	\$941,477
Charges for Service	\$1,526,789	\$2,749,539	\$2,528,647	\$2,747,911	\$1,929,584	\$2,591,547	\$2,601,774
Other Revenue	\$562,696	\$500,671	\$728,404	\$495,267	\$734,490	\$184,096	\$301,452
<b>Total Revenues</b>	<b>\$2,917,837</b>	<b>\$3,945,187</b>	<b>\$4,400,863</b>	<b>\$4,083,456</b>	<b>\$3,669,734</b>	<b>\$3,856,997</b>	<b>\$3,844,703</b>
Tax Levy	\$22,405,295	\$22,080,167	\$20,696,339	\$20,971,887	\$20,063,232	\$19,930,694	\$21,019,631

## Promotions

01/02/2013 — Lt. James Weidner to Captain  
01/02/2013 — Sgt. Bradley Friend to Lieutenant  
01/02/2013 — Deputy Scott Litwin to Sergeant  
01/02/2013 — Corrections Officer Miles Merten to CO Sergeant  
02/12/2013 — Deputy Scott Butler to I94 COP  
03/21/2013 — Deputy Troy Ruffalo to STEU COP  
04/01/2013 — Deputy Kelly Goetzke to Domestic Violence Specialist  
04/30/2013 — Investigator Shawn Barker to Lieutenant  
05/10/2013 — Deputy Danielle Schulman to Investigator  
05/10/2013 — Deputy Jon Bechman to Investigator  
11/11/2013 — CO Sergeant Miles Merten to Deputy Sheriff  
12/13/2013 — Corrections Officer Michael Andersen to CO Sergeant

## Retirements

04/18/2013 – Lieutenant Brian Londre  
11/08/2013 – Deputy David Owsicheck  
12/13/2013 – Deputy Robert Billings  
12/31/2013 – Corrections Officer Susan Remus

## Active Military Personnel

Deputy Twyla Clark  
Deputy Kent Milam  
Deputy Andrew Willis

## 2013 Sheriff's Awards

### Lifesaving Awards Certificates:

Leslie Patton RN  
Deputy Nick Koldeway  
Corrections Officer Robert Hernandez  
Corrections Officer Nicole Peterson  
Corrections Officer Aaron Nelson

### Challenge Coin Recipients:

Deputy Andrew Ellenberger  
Deputy Nick Koldeway  
Corrections Officer Aaron Nelson  
Corrections Officer Nicole Peterson  
Corrections Officer Robert Hernandez  
Leslie Patton, RN

## Acknowledgements

It was with the cooperation of many that this report has come to fruition.

This report represents another year of the Racine County Sheriff's Office history, progress and direction. We are moving forward .

Sincerely

A handwritten signature in black ink, reading "Christopher Schmaling". The signature is written in a cursive style with a large, sweeping initial "C".

Christopher Schmaling  
Sheriff