

Racine County Sheriff's Office

*A Tradition
Since 1836*



2014 Annual Report

Table of Contents

Message from the Sheriff	3
2014 Organizational Chart	4
Mission Statement	5
2014 Sheriff's Office Accomplishments	6
2014 Sheriff's Administration	7
Patrol Operations	9
I-94 Corridor C.O.P.S.	12
STEU C.O.P.S	14
K-9 Unit	15
Criminal Investigations Bureau	16
Evidence Custodian	17
Dive Rescue Team	18
Metro Drug Unit	20
Water Safety Patrol	22
Recreational Patrol	23
SWAT Team	24
Crisis Negotiation Team	26
Crisis Intervention Team	27
Administrative Support	28
Records Bureau	29
Racine County Jail	30
Jail Programs	32
Jail Revenues	34
Jail Population	35
Racine County Sheriff's Office CERT Team	38
Honor Guard	39
Deputy Friendly	40
Robert L. Rohner Training Center	41
Financial Summary	42
Promotions, Retirements & Active Military Personnel	43
Sheriff's Awards	44
Acknowledgments	45

Sheriff Christopher Schmaling's Message

Greetings:

The Racine County Sheriff's Office is the chief law enforcement agency in Racine County. Our agency has full law enforcement authority throughout the county, including all the towns, villages, and cities, as well as the waters of Lake Michigan. We provide the following specialized functions:

- Metro Drug Unit
- Civil Process Unit
- Consumer Fraud Investigation
- Criminal Investigations Bureau
- Water Patrol
- SWAT Team
- Dive/Rescue Team
- Crisis Negotiators

The Sheriff's Office is also responsible for the operation of the Racine County Jail. The jail's rated capacity of 876 persons makes it one of the largest in the state.

The professional staff of our agency remains dedicated to our mission of providing the core services that help maintain public safety, peace, and order in Racine County. We also remain committed to utilizing our resources in the most efficient and responsible manner possible. Our citizens expect these things, and deserve them. It is our great privilege to deliver these services to them.

Sincerely,
Christopher Schmaling, Sheriff
Racine County, Wisconsin



2014 Organizational Chart Racine County Sheriff's Office



Racine County Sheriff's Office Mission Statement

In Partnership with the Citizens, and with the cooperation of the communities within Racine County, the mission of the Racine County Sheriff's Office shall be the preservation of public safety, peace and order. This goal shall be met through proper utilization of the available resources in the most efficient manner possible while maintaining the highest levels of professionalism.



RACINE COUNTY SHERIFF'S OFFICE 2014 ACCOMPLISHMENTS

Violent Crime
33% increase from
2013

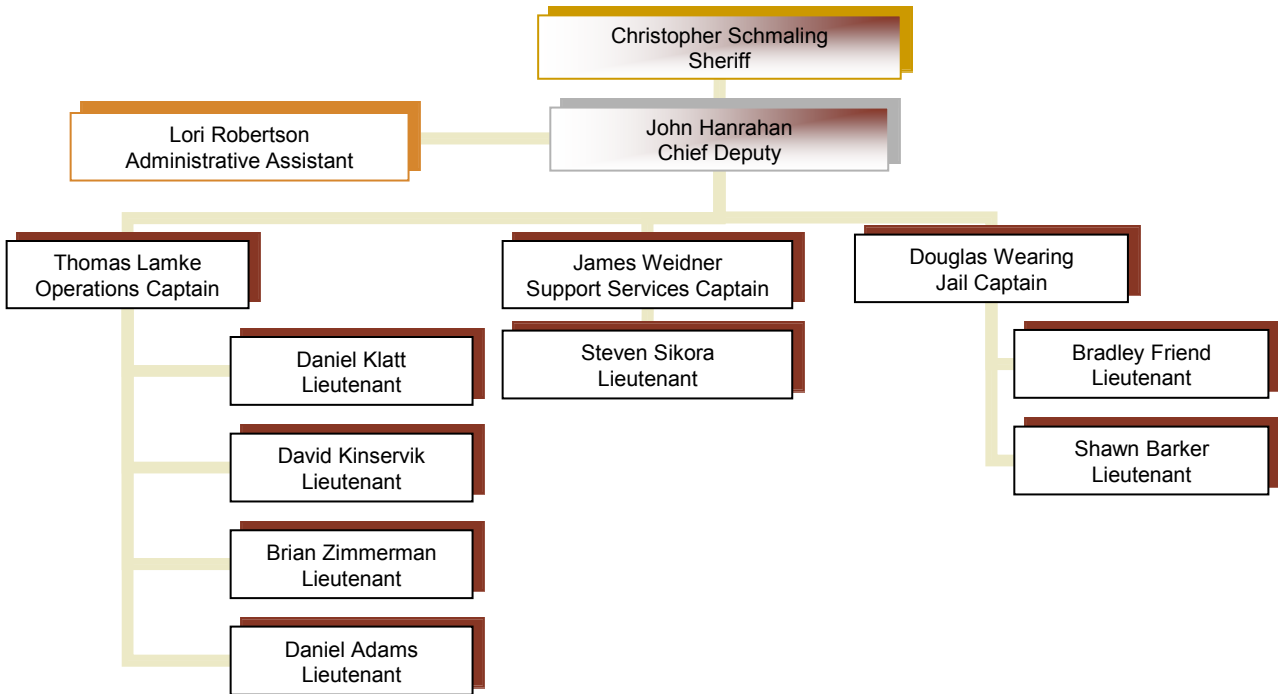
Property Crime
14% decrease from 2013

The Sheriff's Office accepted \$152,750.00 in grant funding in 2014 for the following programs:

- Alcohol enforcement \$30,758
- Speed Enforcement \$17,080
- Seatbelt Enforcement \$17,263
- Justice Assistance Program Grant (Court Security) \$22,887
- HIDTA Award \$38,464
- Domestic Violence RO Enforcement Task Force \$60,916

Uniform Crime Reporting Statistics						
Offenses				Cleared		
Violent Crime	2013	2014	%	2013	2014	%
Murder	0	0	—	0	0	—
Forcible Rape	2	3	50%	0	1	—
Robbery	3	1	-66%	1	1	—
Assault	7	12	71%	7	12	71%
Total	12	16	33%	8	14	75%
Property Crime						
Burglary	77	56	-22%	9	8	-11%
Larceny Theft	329	295	-10%	81	75	-7%
Motor Vehicle Theft	16	13	-18%	5	0	—
Arson	4	3	-25%	4	0	—
Total	426	364	-14%	99	83	-16%
* Although an increase may have occurred, it is not possible to calculate the percentage change due to a zero amount in the previous year.						

Sheriff's Administration



Sheriff Christopher Schmaling addresses the media regarding the arrest of James P. Eaton, for the 1997 homicide of Amber Gail Creek

2014 Sheriff's Administration

The Sheriff's Administration is responsible for the management and direction of the entire Office, and ensures that the Office obtains its goals and objectives.

The Sheriff's Office is a large, dynamic organization with ever-growing responsibilities. The Office is composed of many specialized units.

The Office's Administrative Staff provides support services to all operating units within the Office. Support and administrative services include; creating policy and procedure, handling citizen's complaints, accounting, records, training, communications and clerical support.



Operations Captain Thomas Lamke



Support Services Captain James Weidner



Chief Deputy John Hanrahan



Jail Captain Doug Wearing

Racine County Sheriff's Office Patrol Operations

The Patrol Operation is supported by the Criminal Investigations Bureau, Metro Drug Unit, Racine County Water Safety Patrol and the Sheriff's K-9 Unit

In any Law Enforcement agency, whether a Sheriff's Office or Municipal Police Department, the backbone of the Office consists of the uniformed Patrol Operations.

The uniformed Patrol Operations of the Racine County Sheriff's Office currently has 74 Deputies and Supervisors who are responsible for Patrol activities in Racine County.

The Sheriff's Office Patrol Operations is the primary patrol operation for many of the Town's and Village's in Racine County, and has shared patrol responsibilities in those jurisdictions with their own full or part-time patrol operation.

The Sheriff's Office also provides contractual services for the Village of Union Grove, the Village of Waterford, the Village of Elmwood Park, the Town of Dover, the Town of Raymond, the Village of Rochester, and the Town of Burlington.

Racine County Sheriff's Office Traffic Fatalities								
2006	2007	2008	2009	2010	2011	2012	2013	2014
5	6	10	3	4	10	6	4	5

Motorist's disregard for traffic laws contributes directly to injury and fatal accidents. The Racine County Sheriff's Office has taken an aggressive position in efforts to make the roadways in Racine County a safer place to operate motor vehicles.

In 2014, Wisconsin Department of Transportation awarded the Sheriff's Office \$30,758 for participation in the alcohol enforcement program. An additional \$294,500 was awarded to the Sheriff's Office for I-94 mitigation for the years 2014 and 2015 during the I-94 rehabilitation project.



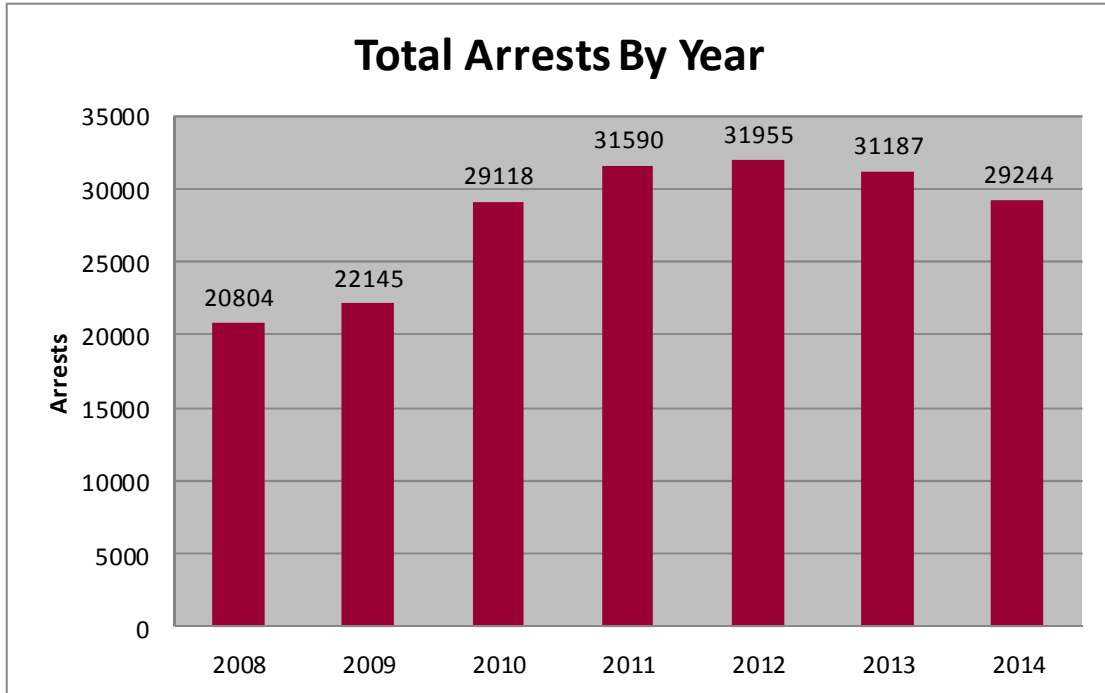
Racine County Sheriff Patrol Operations Statistics							
	2008	2009	2010	2011	2012	2013	2014
Total Miles Driven:	725,033	653,420	728,340	821,730	1,184,677	888,274	969,601
Total Hours Worked:	70,216	67,750	79,096	85,534	88,067	80,541	76,268

Complaint Activity							
	2008	2009	2010	2011	2012	2013	2014
Complaints Assigned:	14,619	13,704	14,683	14,410	15,256	14,917	15,079
Deputy Originated:	6,295	6,974	7,592	10,540	22,007	24,332	25,501
Complaint Follow Up	14,318	13,719	14,948	16,882	14,360	11,568	11,267
Complaints Assisted	4,509	3,943	4,966	5,369	6,029	5,093	4,408
Total Complaints	39,741	38,340	42,189	47,201	57,652	55,910	56,343

Other Enforcement							
	2008	2009	2010	2011	2012	2013	2014
Warnings	4,118	3,868	4,455	5,468	7,786	9,074	6,332
Arrest Warrants	1,143	1,047	718	932	736	715	588



2014 Arrests Statistics



Patrol Arrest Activity							
	2008	2009	2010	2011	2012	2013	2014
Speeding Citations	5,519	7,746	11,310	9,914	8,183	9,709	10,178
Other Traffic Violations	7,258	7,653	9,677	11,650	12,250	12,252	7,087
OWI	332	302	298	313	335	331	371
Citations from Crashes	505	403	429	466	381	414	427
Parking	1,679	1,417	1,268	1,048	1,146	1,236	999
Felonies	159	123	163	124	155	183	170
Misdemeanor Arrests	717	662	625	708	1,042	945	504
Ordinance Arrests	770	799	732	638	677	659	590
TOTAL PATROL ARRESTS	18,947	21,114	26,512	26,872	26,181	25,729	20,326

2014 I-94 Corridor C.O.P.S.

The Racine County Sheriff's Office has created the I-94 Corridor Patrol. Officers aggressively patrol the Interstate as well as property locations within one mile of I-94 in efforts to make the roadways and businesses in Racine County a safer place to operate motor vehicles and conduct commercial operations. The operation is in its eleventh year of operation, and has made a significant impact on traffic safety in Racine County, reducing serious injury accidents from non corridor patrol years.

2014 I-94 Corridor C.O.P.S. Activity	
Base Fine	\$600,449.00
Citation Fine	\$1,744,995.20
Speeding Citations	5096
Miscellaneous Other Arrests / Citations	
OWI Arrests	19
Driver's license violations	617
Registration violations	347
Restraint violations	109
Insurance Violations	549
Weapons Violations	3
Felony Arrests	28
Misdemeanor Arrests	110
Forfeitures	75
Warnings	31
Property Damage Accidents	43
Personal Injury Accidents	18

Service of Warrants	143
Drug Arrests	84

Drugs seized 2014 (I-94 Corridor)	
THC	1020.20 grams
Cocaine	.10 grams
Heroin	221.70 grams
Schedule II, IV, V Drugs	18 tabs
Schedule III Drugs	98 milligrams
Pills (non-schedule)	0 tabs

2002-2014 I-94 Corridor Activity Summary	
Speed violations	71,059
OWI	715
Driver's license violations (2003-2014)	13,108
Registration violations (2003-2014)	12,643
Restraint violations (2003-2014)	4,737
Weapons violations	220
Warrants/Commitments	4,028
*Other arrests/citations include: Following too closely, Unreasonable & imprudent speed, Unsafe lane deviation, Fail to signal, Too fast for conditions, Equipment violations, Failure to obey sign or signal, Improper plates, Overweight, Operating left of center, Reckless driving, Racing, Window tint.	

2002-2014 Drugs seized (I-94 Corridor)	
THC	47,100.49 grams or 103.83 pounds
Heroin	387.9 grams or .855 pounds
Cocaine	27,365.9 grams or 60.33 pounds
Other drugs	463.1 grams or 1.20 pounds of Ecstasy, 1,086 tabs/pills of various controlled pills/ schedule II, schedule IV, V 46.2 grams Psilocybin

2002-2014 Cash seized	\$538,386
------------------------------	------------------

2002-2014 citations/arrests:	126,280
-------------------------------------	----------------

STEU C.O.P.S.

In 2010, two new C.O.P. positions were created to function as a specialized traffic enforcement unit with a concentration on state and county highway traffic enforcement.

2014 STEU Statistics	
Base Fine	197,678.00
Total Citation Bond	\$599,379.70
Total Warrant Bond	\$10,200.30
Total Traffic Citations	2,390
Ordinance Citations	49
Misdemeanor Arrests	19
Felony Arrests	19
Weapons Violations	1
Total Drug Arrests	46
Total THC Weight	9230 grams
Total Cocaine Weight	0 grams
Total Heroin Weight	0.3 grams
Total Cash Seized	\$1,457.40



Racine County Sheriff's Office K-9 Unit

In 1999, the Racine County Sheriff's Office began its first Canine Unit. With the generous support of many businesses and citizens, the program was launched.

The Canine Unit is currently comprised of 4 K-9's and their handlers, thanks to the overwhelming support of the community and several local businesses. In 2012, K-9 Friday was placed into service. Friday is a Belgian Malinois/German Shepherd mix. Friday is also a dual purpose K-9, trained in narcotics detection, tracking, building and area searches, and articles and evidence searches. Friday is partnered with Deputy Edward Drewitz.

In 2013, additional donations were received, and the Sheriff's Office was able to add two K-9's to the K-9 unit. K-9 Nitro and K-9 Murphy were placed into service in November 2013. Both are Belgian Malinois's, and both are dual purpose K-9's, trained in narcotics detection, tracking, building and area searches, and articles and evidence searches. Nitro is partnered with Deputy Troy Ruffalo and Murphy is partnered with Deputy David Fisher.

The newest member to our Canine Unit is K-9 Nox, a German Shepherd trained in narcotics detection, tracking, building and area searches, and articles and evidence searches. Nox is partnered with Deputy Kurt Clemens. They trained together in North Carolina for 6 weeks. Nox was placed into service in May 2014.



Deputy Drewitz and K-9 Friday



Deputy Ruffalo and K-9 Nitro



Deputy Fisher and K-9 Murphy



Deputy Clemens and K-9 Nox

Racine County Sheriff's Office Investigative Bureau

The Racine County Sheriff's Office Investigative Bureau is comprised of 1 Lieutenant and 15 Investigators. One Investigator is assigned to Civil Process and one is assigned to Consumer Fraud Investigations.

The Investigative Bureau has a number of specialized units staffed by highly trained and skilled Investigators.

- Sexual Assault**
- Child Abuse**
- Burglary & Theft**
- Arson Investigations**
- White Collar & Financial Crimes**
- Internet Crimes**
- Traffic Investigations**
- Consumer Fraud**
- Death Investigation**
- Street Gangs**



2014 Criminal Investigation Activity Summary		
Classification	Total calls for Service	Calls investigated by Bureau
Thefts	396	81
Burglaries	70	37
Sex Offenses	85	60
Physical Assaults	190	25
Fraud	200	54
Robberies	1	1



Racine County Sheriff's Office Evidence Custodian

The Racine County Sheriff's Office Evidence Custodian is responsible for the proper collection, identification, and preservation of evidence collected by Deputies and Investigators.

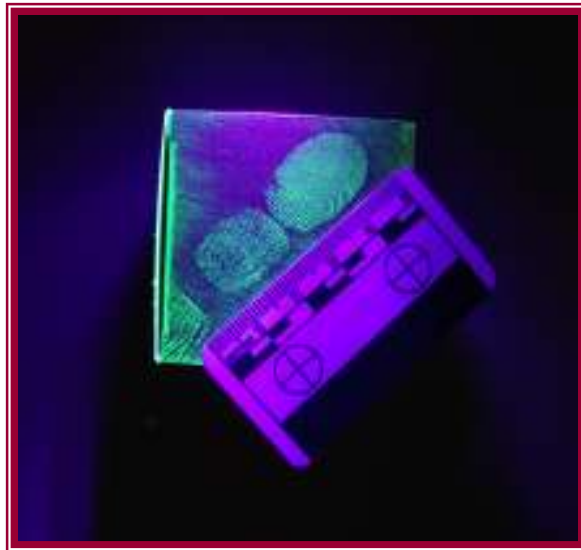
In 2014,
3,318 items of
evidence were
inventoried

The Evidence Custodian maintains the 'chain of custody' of evidence that may be sent to the Crime Lab for analysis.

Collection and processing of evidence is a constantly changing field that demands the Office be current in the latest technological procedures. Our Evidence Custodian and Investigators are highly involved in learning new processes and proper technique for evidence collection.

In 2014, 348 items were returned to the rightful owner or disposed of, 38 vehicles were processed, 630 items were taken to the Crime Lab for analysis.

In addition to evidence of criminal activities, 176 blood samples of potential OWI situations were processed through the always-busy Evidence Section and the Wisconsin State Hygiene Lab/Crime Lab.



Racine County Sheriff's Office Dive Rescue Team

The Racine County Sheriff's Office Dive Rescue Team is a member of the Racine County Dive Team (RCDT) which operates under the Mutual Aid Box Alarm System Agreement ("MABAS") Division 102 under the authority and oversight of the Sheriff. RCDT members are comprised of public safety agencies within Racine County including Sheriff's Deputies and Corrections Officers, Fire, Rescue and EMS personnel. RCDT members include rescue/recovery divers, surface rescuers and shore/boat support personnel. At the present time, the RCDT has approximately 60 members.

The primary function of the RCDT is to make every reasonable attempt to save any person that may be drowning or has disappeared under the surface of any body of water within Racine County.

Additionally, the RCDT will make every reasonable effort to recover the body of any person that has been declared a drowning victim in any body of water within Racine County. The team also responds for evidence recovery operations and provides safety for water related events throughout Racine County.

Because the RCDT is comprised of multiple agencies with numerous specialized assets and personnel, it is considered a regional response team and has assisted other agencies of Southeastern Wisconsin and Illinois with their waterborne operations.



RCDT member agencies schedule intensive practical trainings each month and open their respective trainings to other member agencies. All active divers must have a minimum of an advanced certification through a professionally accredited SCU-BA certification agency.

The RCDT has also obtained specialized equipment to make underwater searches safer and faster. This includes an underwater towable video system, diver to diver underwater communications, surface supplied air system, and a diver to surface video system. Rescue boats are staged east and west of I-94

for rapid deployment to any body of water in Racine County.

Many RCDT members have taken continuing education courses and are certified in such specialties as: Advanced Open Water, Rescue Diver 1 & 2, Medical Dive Specialist, Ice Diver, Wreck Diver, Night Diver, Computer Diver, Deep Diver, Cave Diver, Equipment Repair Specialist, Swift Water Rescue, Underwater Investigator, Underwater Death Investigator, Nitrox Diver, Staged Decompression Diver, Advanced Tri-Mix Diver, Ad-

vanced Gas Blender, Dive Mas-

**The Racine County
Sheriff's Office Dive
Rescue Team
completed 932 Hours
of Proficiency Training
in 2014**

Racine County Sheriff's Office Dive Rescue Team

Dive Team – 2014 Calls for Service	
Rescues	1
Evidence Recovery	1
Assisting Other Jurisdictions	1
Water Safety Events	1
Public Relations Events	7
Additional Training Events	3



Racine County Sheriff's Office Metro Drug Unit

Three Investigators, one supervising Sergeant, and a part time Secretary currently staff the Racine County Metro Drug Unit. All members of the METRO Drug Unit are Sheriff's Office personnel.

The Metro Drug Unit executed 86 search warrants during 2014

The Unit was created to provide a coordinated and comprehensive effort to investigate and arrest those who engage in the trafficking of illegal drugs within Racine County. The Unit works closely with the FBI, IRS, DEA and the Federal Prosecutors Office, as well as other State and local law enforcement agencies such as SEADOG, a 5-county information and intelligence sharing cooperative.

During 2014, there were 1,101 arrests made for various drug charges in Racine County. Of those arrested, 96 were juveniles. There were 614 Felony charges, 307 Misdemeanors, and 84 Ordinance violations.

2014 Metro Drug Activity - Seizures		
Substance	Quantity	Street Value in US Dollars
<u>Aderrall</u>	349 tbls	1,745.00
<u>Alprazolam</u>	365 tbls	1,825.00
Cocaine	509.9 grms	50,990.00
Crack Cocaine	315.2 grms	22,064.00
Heroin	290.3 grms	58,060.00
<u>Hydrocodone</u>	258 tbls	1,290.00
Marijuana – THC	49093.6 grms	490,936.00
Marijuana Plants	224	224,000.00
<u>Oxycodone</u>	936 tbls	28,080.00
<u>Misc Tablets</u>	491 tbls	2,455.00
<u>Total</u>		881,445.00



Metro Drug Unit Statistics

Metro Drug Unit							
Felony Charges	2008	2009	2010	2011	2012	2013	2014
	250	366	373	454	457	545	614

Metro Drug Unit							
Search Warrants	2008	2009	2010	2011	2012	2013	2014
	48	39	75	87	88	83	86



Racine County Sheriff's Office Water Safety Patrol

The Racine County Sheriff's Office continues to operate the Water Safety Patrol on Lake Michigan and on inland lakes and rivers throughout Racine County. The Water Safety Patrol operates from April 1st until about the second week of November. During the summer months, Water Safety Patrol Deputies are assisted by approximately 5 college student summer employees.



The Water Safety Patrol continues to be partially funded by the Department of Natural Resources. Annually, up to 17% of the costs of operating the Water Safety Patrol are reimbursed to Racine County.

The Racine County Sheriff's Water Safety Patrol responds to assist boaters for a variety of incidents, including accidents, engine failures, and rescue as well as enforcement activities.

Water Safety Patrol Calls for Service 2014	
Boat Accidents	0
Search & Rescue	1
Hazard to Navigation	0
Boating Citations Issued	24
Boating Warnings Issued	20
Vessels Assisted	38
Boat Inspections (Compliance/Safety)	42
TOTAL CALLS FOR SERVICE	163
TOTAL PERSONS ASSISTED	89



Photo courtesy of Racine Journal Times



Racine County Sheriff's Office Recreational Patrol



The Racine County Sheriff's Office Recreational Patrol is responsible for overseeing snowmobile safety and ATV safety, along with investigating accidents and complaints related to these recreational activities.

The Racine County Sheriff's Office Snowmobile Patrol is supported by the Racine County Snowmobile Alliance and the Department of Natural Resources. Our office submits a year-end report to the Department of Natural Resources after each snowmobile season, and we are reimbursed for a portion of the cost to operate the snowmobile patrol.

Our Motorcycle Patrol unit is made up of sworn officers who must successfully complete an intensive training class before operating the motorcycle in an enforcement capacity. The Sheriff's Office currently has two Harley Davidson police motorcycles. The motorcycle unit performs traffic enforcement throughout the county and has assisted with escorting dignitaries and parades.



Racine County Sheriff SWAT Team

The Racine County Sheriff's Office SWAT Team is comprised of deputies, investigators and supervisors from all areas of the Sheriff's Office.

Team members train regularly to assist Racine County Law Enforcement agencies with serving high risk warrants, fugitive apprehensions, resolving barricaded subject and hostage situations, and addressing other high risk law enforcement operations as needed.



Racine County Sheriff SWAT Team



Regular hands on and classroom training combined keeps team members skills at the level needed to operate in these high risk environments.



Racine County Sheriff Crisis Negotiation Team (CNT)

The Racine County Sheriff's Office Crisis Negotiation Team (CNT), consists of 12 sworn members of the Sheriff's Office. The CNT responds to calls from the Patrol Division for assistance with barricaded subjects, hostage situations, domestic abuse calls, and other calls requiring specialized training in resolving dangerous situations safely and peacefully through verbal skills.



All the CNT members have received continuous training through the FBI, State of Wisconsin Crisis Negotiators Association, Wisconsin DCI, and Wisconsin D.O.C. The CNT also trains locally throughout the year using scenario training with other teams, and with the Racine County Sheriff's Office SWAT Team.



Racine County Crisis Intervention Team

Racine County started the current C.I.T. program in the April 2009 through the assistance of then County Executive McReynolds and the local branch of NAMI (National Alliance of Mental Illness) who saw a need to train local members of the Law Enforcement Community who were responding to calls for service involving those suffering from a mental disorder or in crisis.

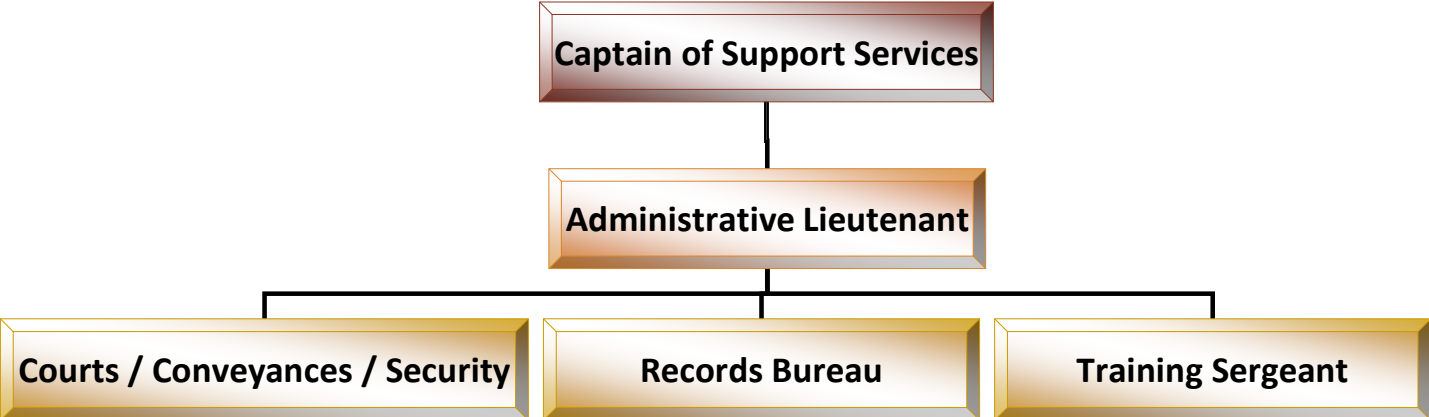
Since the program's inception in Racine County, we have had 8 classes graduate consisting of officers from every Law Enforcement Agency throughout Racine County; approximately 220 Officers have completed the 40 hour course.

Officers attending this course of study learn from local experts in the field of mental health and from consumers themselves on ways of better handling their crisis at the time of the call. In short, the CIT works to find better, safer ways to handle these calls.

The Racine County C.I.T. program, partnered with C.I.P. (Crisis Intervention Partner), conducts two 16-hour classes a year geared towards dispatchers, nurses, fire personnel, corrections, HSD and others dealing with people suffering from a mental disorder or in crisis, with approximately 400 trained as of December 31, 2013.



Administrative Support



Racine County Sheriff's Office Records Bureau

The Records Bureau is responsible for all records generated by patrol, investigative, and jail personnel in the normal course of their duties. These records include incident reports, accident reports, citations, photographs, electronic media, investigative reports, jail records, and any other documents related to these records kept during the normal course of business.

**In 2014,
651 Sheriff's Fore-
closure Notices
were received, a
decrease of 41.8%
from 2013**

Filing, data entry of pertinent information, and storage are the main functions involved with maintaining the records. Arrest paperwork is collected, processed, and disseminated to the courts and District Attorney's Office as appropriate. The Records Bureau also maintains inactive jail files, fingerprint cards, and mug shots as part of its centralized records and identification functions. Records are warehoused for seven years prior to the destruction process set forth by Racine County. Some records, due to their nature, are kept past the seven-year period with no possibility of destruction.

Civil Process clerical functions are handled by Records Bureau personnel. This includes data entry, tracking, processing necessary documents, and collecting fees due.

Records clerks perform data entry, fingerprinting and photographing of non-custody defendants, sex offender registrants, juveniles arrested, and applicants and citizens requiring special licenses or certifications. This function utilizes jail management software and is interfaced with the State of Wisconsin Crime Information Bureau for electronic submission of fingerprints.

Records Bureau personnel respond to a wide range of requests for information and records from the general public, news media, attorneys and prosecutors, other law enforcement agencies, courts, and departmental employees. Crime statistics and arrest and accident report information is filed with the proper State and Federal agencies. Criminal record checks and requests filed under WI Open Records Law are date sensitive and are handled as high priorities.

Currently, the Records Bureau staff includes one supervisor, three full-time clerks and two part-time clerks. Office hours are from 8:00 AM until 4:30 PM, Monday through Friday excluding legal holidays.

Currently, the Administrative Services Coordinator is responsible for software application administration for dispatch and records management. This includes troubleshooting, training, drafting and implementation of procedures, and quality control for data entry functions. The Supervisor interacts with other networked agencies for software procedures and implementation.

The Racine County Jail

The Racine County Jail is located at 717 Wisconsin Avenue in downtown Racine. It is part of the Racine County Law Enforcement Center that opened in 1981. At the time the “new” jail opened, inmate capacity numbered 144. Today, after several expansion and double bunking projects, the jail’s capacity is 876 inmates.

Wisconsin State Statute 59.27 requires the Sheriff of each County to “Take the charge and custody of the jail maintained by the County and the persons in the jail, and keep the persons in the jail personally or by a Deputy jailer.”

Racine County employs a combination of sworn Deputy Sheriffs and civilian Correction Officers to satisfy this mandate. Jail support staff includes cooks and clerk typists.

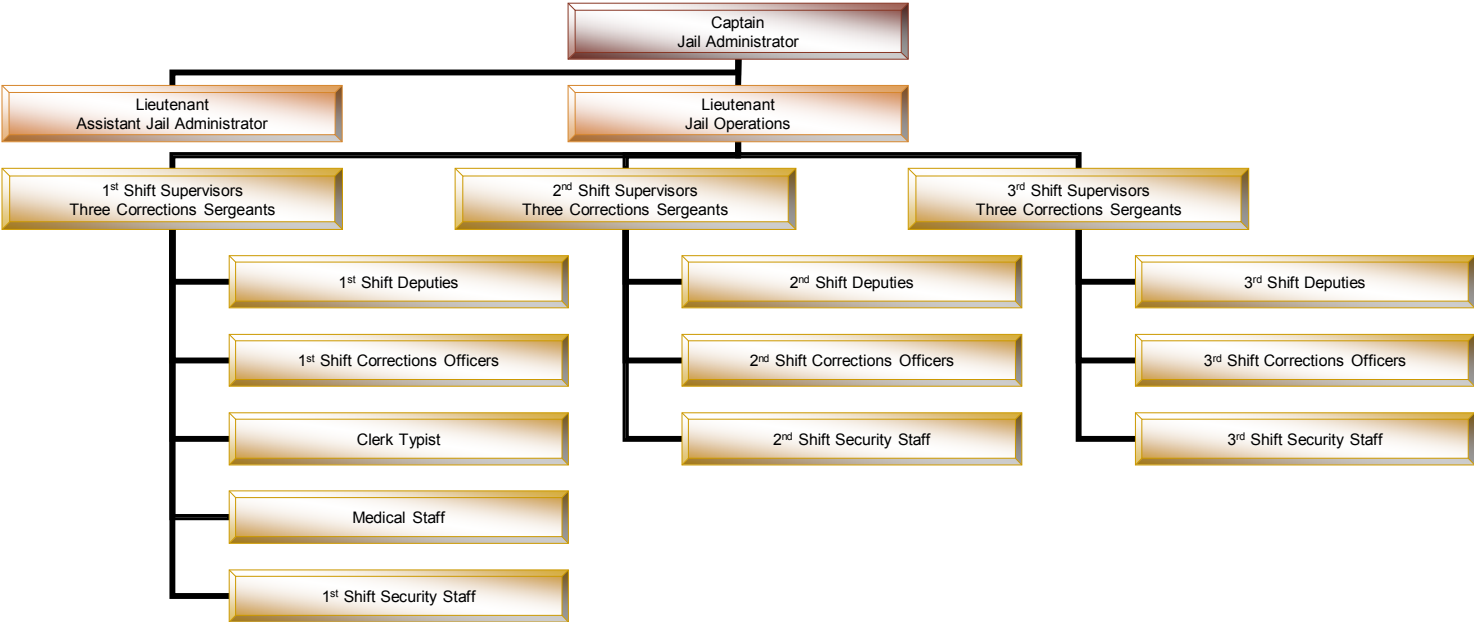
18 Deputies
9 Corrections Sergeants
65 Corrections Officers
1 Clerk typist

The Mission of the Racine County Jail is to safely, securely and humanely detain all persons admitted to the facility. To attain this mission, all staff receives professional training in modern corrections practices, and are expected to be in compliance with formal policies, procedures, and rules that guide them in the performance of their duties.

In addition to maintaining a safe and secure facility, the jail is obligated to provide for the medical, religious, and educational needs of its inmates. Religious and educational needs are met through the Racine county Jail Chaplaincy Program. The Racine County Jail is committed to providing programs that aim to serve inmate’s needs and the needs of the community.



Racine County Jail Staff





Jail Chaplaincy Program

The Chaplaincy Program maintains a web site at:
www.racinecounty.com/chaplain

The Jail Chaplaincy Program provides a number of services and programs for inmates who request to be involved.

Chaplaincy programs include:

- Bible Study, including Spanish and Catholic studies
- Alcoholics Anonymous meetings
- One on One mentoring
- High School
- Life Skills – Basic skills in good living
- Pre-Release Assistance – how to obtain clothing, food, etc.
- Self Esteem – Better understanding who you are / who you want to be
- Anger Management – Men & Women
- Communications – learning to express yourself better
- Story Time – a DVD of a parent reading a story to their child
- Issues – Women only
- Domestic Violence – Women
- Library Services
- Drug Abuse Counseling
- Worship Services
- Post Release Support @ 262-898-8585

Other Inmate Programs



There are other programs that are provided to inmates in addition to those of the Jail Chaplaincy. The Jail provides a comprehensive in house **AODA Treatment Program**, started in June of 1998. The AODA Treatment Program has two main components: a 30-day in-Jail element and a nine month post Jail aftercare module.

The housing configuration allows up to twenty inmates, both male and female, to receive treatment during the in-house portion. This is an intensive segment administered by certified AODA professionals. It lasts for approximately thirty days and runs from 7:00 AM until 10:00 PM seven days a week, including holidays.

The aftercare phase is nine months long and is a holistic service integrating housing, employment and other community outreach assistance, as well as continued alcohol and drug counseling. Inmates are admitted to aftercare after successful completion of in-house treatment and staying of their sentences by the sentencing court. If the inmate successfully completes the aftercare phase, the stayed sentence becomes time served.



The Jail's **Inmate Worker Program** and **Community Work Service Program** allow approved inmates to earn reductions in their sentences. Inmate Worker participants work in the Jail kitchen and laundry, as well as performing janitorial work throughout the Jail interior. There is also an inmate worker crew that specializes in the painting of the jail and performing other needed more specialized cleaning in the jail. Community Work Service participants work for non-profit community groups. In each program, the goals are to have the inmates provide useful service to the community and reduce Jail bed days. Community Work Service inmates also shovel the sidewalks of the LEC and Court House, fill sandbags (when needed), and mow the grass medians on the counties highways.

Jail Revenues

The Racine County Jail generates revenue from a number of sources, which are detailed in the table below.

Revenue Source	2008	2009	2010	2011	2012	2013	2014
SPO Holds	\$219,900	\$267,630	\$268,633	\$207,774	\$246,970	\$228,143	\$229,026
Comm. Sales	\$145,778	\$144,770	\$184,740	\$267,829	\$261,048	\$267,188	\$270,240
Bed Rentals	\$1,203,083	\$1,224,902	\$895,507	\$331,349	\$323,117	\$356,155	\$299,497
Inmate Phones	\$450,815	\$364,473	\$400,511	\$296,808	\$323,238	\$317,583	\$315,114
Other Municipalities	\$121,172	\$138,919	\$163,431	\$141,266	\$136,884	\$121,992	\$121,066
Huber Law	\$315,177	\$229,502	\$238,464	\$290,332	\$271,743	\$255,035	\$239,672
SS Reimbursement	\$40,600	\$47,600	\$56,800	\$65,000	\$69,600	\$51,000	\$53,000
Dept of Public Instruction Detention Lunch	\$91,316	\$77,395	\$58,875	\$60,804	\$36,613	\$56,525	\$34,158
Totals	\$2,587,841	\$2,495,201	\$2,266,961	\$1,661,162	\$1,346,096	\$1,653,621	\$1,561,773



Jail Population

Persons are admitted to the Racine County Jail for numerous reasons. Some of the causes are:

- Sentenced Inmates (Huber and General Population)
- Pre-trial Detainees
- State Probation Holds
- Holds for Other Jurisdictions
- Returned on Writs

The jail population increased significantly during the last decade, but has been declining since 2009. The average daily population is shown below.

	2008	2009	2010	2011	2012	2013	2014
Jan	751	766	770	698	655	676	703
Feb	783	777	747	679	651	689	699
Mar	778	794	720	672	646	698	652
Apr	762	801	663	689	631	644	648
May	769	788	662	693	691	658	621
June	775	793	684	689	689	654	666
July	772	806	678	688	669	683	693
Aug	834	792	702	715	681	676	708
Sept	830	816	731	709	716	734	716
Oct	825	815	717	678	713	716	687
Nov	814	773	694	681	687	696	657
Dec	759	762	650	674	666	662	638
Average	788	790	702	689	675	682	674



Racine County Jail Admissions

2008	2009	2010	2011	2012	2013	2014
11,118	10,642	9,712	9,688	9,275	9,144	9,045

Average Length of Stay in Days

2008	2009	2010	2011	2012	2013	2014
25.6	26.7	29.2	27.4	26.4	29.3	29.6

Bed Days Saved by Program

	2008	2009	2010	2011	2012	2013	2014	TOTAL
AODA Program	7553	7565	8820	8412	8772	8466	9170	58,758
Employment Program	6478	7990	8822	6935	4796	4796	7041	46,858
Day Reporting Center	8067	11006	13982	12858	12239	12621	13207	83,980
Treatment Court	2600	2080	1040	1820	2080	2600	1300	13,520
Community Service	631	1000	1266	996	812	665	853	6,223
Inmate Workers	3464	6000	2757	2798	2637	2145	2403	22,204
TOTAL	28,793	35,641	36,687	33,819	31,336	33,939	33,974	231,543



In order to accommodate the increased demands on the Jail's space, the entire living facility area was double bunked in a renovation project completed in 1998.

The Sheriff's Office has implemented AODA, Children First and Community Work Service programs so that more Jail bed days could be saved. The Sheriff and Jail management have continued to explore ways to relieve crowding, including the implementation of a Day Reporting Center in early 2001.

In 2006, the County Board approved a Jail construction project that included additional dormitory style housing for inmates, a new intake area, a new vehicle sally port and remodeling of the first floor of the existing Jail. The addition, increasing the Jail's capacity to 876 was completed in the fall of 2007.



Because of a number of laws and administrative codes, the Jail staff must perform many man-hour-intensive tasks relating to inmate property, money, health care, medication, housing, movement, and so on. Jail Management Software allows these tasks to be performed more efficiently. The software also enables Jail staff to develop accurate information concerning inmate demographics and population trends. These statistics will enable staff to make informed assessments and projections of how the facility is used, and by whom.

Racine County Jail Correctional Emergency Response Team (C.E.R.T.)

The Racine County Sheriff's Office Correctional Emergency Response Team. C.E.R.T. is a specially trained tactical response team that responds to disturbances within the Racine County Jail. The team consists of 15 members including a team commander, an assistant team commander and two team leaders. All correctional staff that has successfully completed their probationary period are eligible to try out for the team. The team receives additional training in disturbance resolutions and use of force situations. C.E.R.T. members have access to and are trained with additional equipment that can be used during disturbance resolution. Types of disturbances that the Correctional Emergency Response Team responds to include: cell extractions, dayroom disturbances, riots, or large scale searches, possibly involving uncooperative or violent inmates. C.E.R.T. is based on a team concept where all members work as one unit to achieve a common goal.



Honor Guard

The Racine County Sheriff's Office Honor Guard consists of 12 sworn members of the Racine County Sheriff's Office. The Honor Guard is called out for funerals for past and present members of the Racine County Sheriff's Office. The Honor Guard serves at these funerals as a show of respect and honor for the deceased Deputy's service as a Law Enforcement Officer to the county and the Racine County Sheriff's Office.



Using special Honor Guard uniforms and equipment, the Honor Guard performs a casket watch during the visitation, performs pall-bearer duties, sets up the squad procession to the burial site, folds and presents the flag to the family, and arranges the rifle salute, bugler, and bagpiper.

The Honor Guard also attends line-of-duty funerals for deceased officers from other law enforcement agencies throughout the State of Wisconsin and adjoining states as a show of respect for the fallen officer, their families and their law enforcement agency.



Deputy Friendly Program

The Deputy Friendly program has been very successful for many years. Every year, Deputy Friendly, Deputy Tim Graves, reaches out to thousands of children attending schools located throughout Racine County.

Deputy Friendly's objectives are:

- To provide students with the opportunity to develop an intelligent understanding of his or her rights, responsibilities and obligations as a junior citizen
- To establish a link between students of our communities and uniformed Law Enforcement Officers
- To develop a respectful image of the Sheriff's Office in the minds of students
- To provide a role model that is looked up to with respect



During 2014, Deputy Friendly was involved in the following:

- Visiting preschools and day care centers
- Managing the annual Deputy Friendly Awards Contest
- Bicycle Rodeos
- Safety Town USA Instructor
- Child Passenger Safety Technician
- Tobacco Abatement Program
- Alcohol Awareness Program
- Visit elementary schools in Racine County, educating kindergarten through second grade students on a variety of topics: the job of a police officer, gun safety, stranger awareness, bicycle safety, pedestrian safety and passenger safety
- Visit children in local hospitals and shelters with the Easter Bunny – provide Easter baskets



The Robert L. Rohner Training Center

The Robert L. Rohner Training Center is a joint venture between the FBI, the Racine County Sheriff's Office, and WE Energies. Discussions began during 2003/2004 culminating in a financial commitment by the FBI and WE Energies donating land under the terms of a zero-cost lease agreement. The FBI contributed approximately \$1.5 million for the construction of a building, grounds improvements and a range house to serve the training needs of the FBI, the Racine County Sheriff's Office, and other local police agencies. WE Energies contributed approximately 25 acres of land along with enough clean fill to erect the existing berms on the north end of the range property. The training center is also available to other Racine County Law Enforcement agencies & Gateway Technical College.



The main building on the training center grounds features traditional classroom space on the main level along with bathrooms, showers, and a locker room. The classroom is equipped with audiovisual technology to accommodate various media formats for training and presentations. The lower level contains additional classroom space with a well-cushioned floor and open space for use in dynamic training. The building is climate-controlled year round.

The training center contains both a pistol range and a rifle range to accommodate the different types of weapons systems typically in use by law enforcement. The pistol range is equipped with a range tower that provides a vantage point for observation and it also serves as a control center for the fully automated target system. The architectural design of the training center along with the incorporated technologies ensure that Racine County Law Enforcement training needs are met well into the future.



Financial Summary

	2008	2009	2010	2011	2012	2013	2014
Personnel Costs	\$22,505,974	\$21,278,336	\$20,312,669	\$19,272,807	\$19,342,753	\$18,876,466	\$19,560,168
Operating Expenses	\$3,519,380	\$3,818,866	\$4,742,674	\$4,460,159	\$4,444,938	\$5,987,868	\$3,794,721
TOTAL	\$26,025,354	\$25,097,202	\$25,055,343	\$23,732,966	\$23,787,691	\$24,864,334	\$23,354,889

Revenues							
	2008	2009	2010	2011	2012	2013	2014
General Revenues	\$694,977	\$1,143,812	\$840,278	\$1,015,660	\$1,081,354	\$941,477	\$1,088,808
Charges for Service	\$2,749,539	\$2,528,647	\$2,747,911	\$1,929,584	\$2,591,547	\$2,601,774	\$2,563,622
Other Revenue	\$500,671	\$728,404	\$495,267	\$734,490	\$184,096	\$301,452	\$273,265
Total Revenues	\$3,945,187	\$4,400,863	\$4,083,456	\$3,669,734	\$3,856,997	\$3,844,703	\$3,925,695
Tax Levy	\$22,080,167	\$20,696,339	\$20,971,887	\$20,063,232	\$19,930,694	\$21,019,631	\$19,429,194

Promotions

02/24/2014 - Deputy Kurt Clemens to K-9 Unit Handler
12/01/2014 - Corrections Officer Charles Winsel, Jr. to Corrections Sergeant

Retirements

07/30/2014 - Deputy Jon Hansen
12/19/2014 - Corrections Officer Mark Spranger
12/26/2014 - Evidence Custodian Leslie Hurdis

Active Military Personnel

Deputy Daniel Fritsch
Deputy Kent Milam
Deputy Andrew Willis

2014 Sheriff's Awards

Racine County Employees of the Month:

Corrections Officer Barb Teeling – March 2014
Lieutenant David Kinservik – July 2014

Lifesaving Awards Certificates:

Lieutenant David Kinservik
Deputy Paul Dittman
Corrections Officer Jared Guillien

Challenge Coin Recipients:

Captain James Weidner
Lieutenant David Kinservik
Lieutenant Steven Sikora
Sergeant Cary Madrigal
Investigator Tracy Hintz
Deputy Scott Butler
Deputy Paul Dittman
Deputy Kevin Kazmierski
Deputy Jarod Kroll
Deputy Troy Ruffalo
Deputy Jimmy Wallace
Corrections Officer Jared Guillien

In Memory:

Deputy Karl A. Jensen, Retired
Deputy Gordon R. Johnson, Retired
Investigator Michael D. Vogt, Retired

Acknowledgements

It was with the cooperation of many that this report has come to fruition.

This report represents another year of the Racine County Sheriff's Office history, progress and direction. We are moving forward .

Sincerely

A handwritten signature in black ink, reading "Christopher Schmaling". The signature is written in a cursive style with a large, sweeping initial "C".

Christopher Schmaling
Sheriff