

RESOLUTION NO. 2008-114

RESOLUTION BY PUBLIC WORKS, PARKS AND FACILITIES COMMITTEE GRANTING PERMANENT EASEMENTS TO WE-ENERGIES TO INSTALL ELECTRIC UTILITES WITHIN CASE EAGLE PARK AND EINER FISCHER PARK

To the Honorable Members of the Racine County Board of Supervisors:

BE IT RESOLVED that the Racine County Board of Supervisors hereby that the granting of easements to We–Energies for the construction and maintenance of:

- 1. Electrical utilities within Case Eagle Park;
- 2. Electrical utilities within Einer Fischer Park;

as set forth in Exhibits “A” and “B,” that are attached hereto and incorporated herein, are authorized and approved under the following terms and conditions:

- 1. WE–Energies shall provide Racine County with a legal description for the permanent easements.
- 2. Such other terms and conditions as the Public Works Director and the Corporation Counsel deem necessary and proper.

BE IT FURTHER RESOLVED by the Racine County Board of Supervisors that the execution of any easement agreements by the County Board Chairman and the County Clerk to carry out the intent of this resolution is authorized and approved.

Respectfully submitted,

1st Reading _____

PUBLIC WORKS, PARKS AND FACILITIES COMMITTEE

2nd Reading _____

BOARD ACTION

Jeff Halbach, Chairman

Adopted _____

For _____

Against _____

Absent _____

Gilbert Bakke, Vice-Chairman

VOTE REQUIRED: Majority

Russell Clark, Secretary

Prepared by:
Corporation Counsel

Diane M. Lange

Donnie Snow

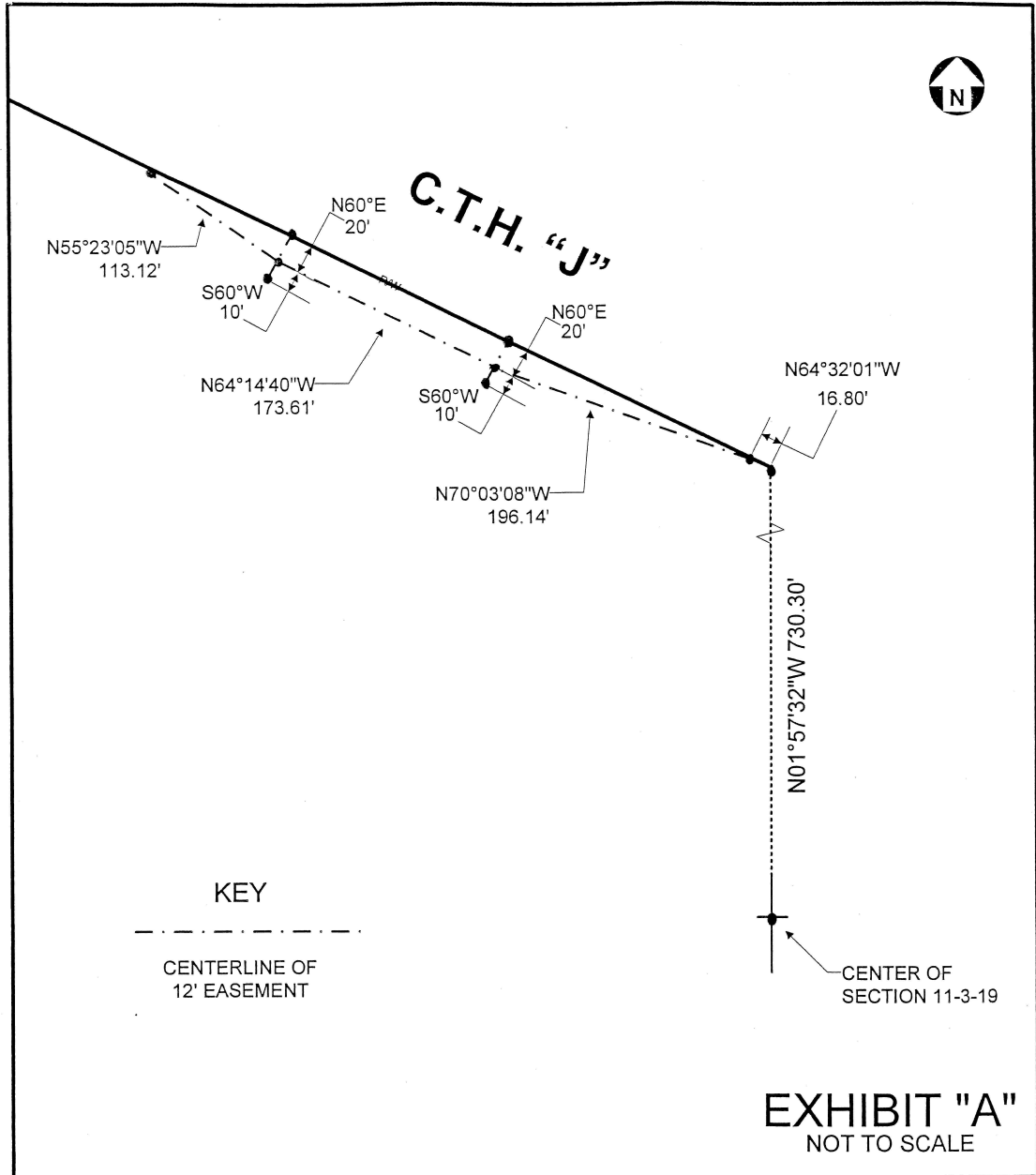
3
4
5
6
7
8
9
10
11
12
13
14
15
16
17
18
19

Mike Dawson

Jim Kaplan

INFORMATION ONLY

WHEREAS, WE-Energies has requested Racine County to grant certain easements to allow for the placement of electrical utilities within Case Eagle Park and Einer Fischer Park.



IDO 2685445	PART OF THE NORTHWEST ¼ OF SECTION 11, TOWN 3 NORTH, RANGE 19 EAST, VILLAGE OF ROCHESTER, RACINE COUNTY, WISCONSIN.	DRAWN BY TAZ
REVISIONS		DATE October 8, 2008

