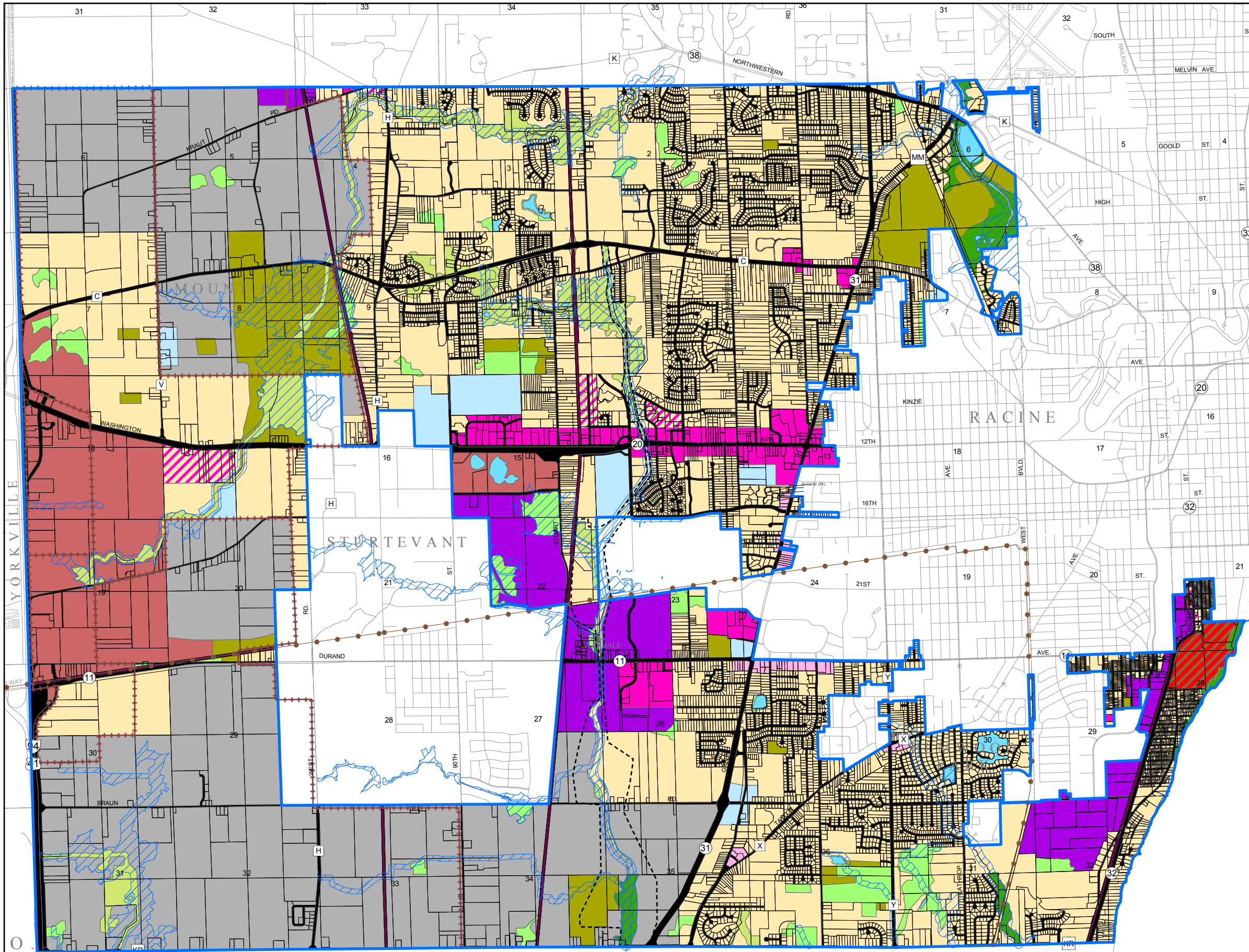


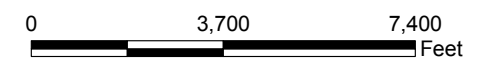
# VILLAGE OF MOUNT PLEASANT LAND USE PLAN: 2035



- RESIDENTIAL AREAS INCLUDE CHURCHES, MULTI - FAMILY
- PARK, RECREATION, NATURAL AREAS
- INDUSTRIAL
- INSTITUTIONAL, SCHOOL, GOVERNMENT
- BUSINESS PARK
- LIMITED COMMERCIAL & SERVICES
- COMMERCIAL
- MIXED USE - COMMERCIAL AND RESIDENTIAL
- RESIDENTIAL - MIXED/ALT. COLOR SHOWN
- AGRICULTURE, FUTURE USE PER COLOR BOUNDARY SHOWN
- TRANSPORTATION, COMMUNICATION AND UTILITIES
- STREETS AND HIGHWAYS
- FLOODPLAINS \*
- PONDS, LAKES, STORM WATER DETENTION

**SEWRPC AREAS**  
Southeastern Wisconsin Regional Planning Commission, Waukesha, WI.

- Primary Environmental Corridor
- Secondary Environmental Corridor
- Isolated Natural Area
- Prime Agricultural Area
- Urban Sewer Service Area Boundary
- Parcel Line



MAPPING ASSISTANCE AND DATA BY:  
S.E.W.R.P.C., Waukesha, WI  
RACINE COUNTY LIO, Racine, WI  
Michael Slich, Land Information Officer  
CRISPELL-SNYDER, INC., Lake Geneva, WI  
Nedd Niedermeyer - GIS Manager

\* Note: The Pike River floodplain has been modified to show expected levels upon completion of the Pike River Restoration Project. This is not the current floodplain extent nor is it the FEMA boundary.